



CURRENT STATUS OF CONFIRMED CASES



274



ACT	NSW	NT	QLD	SA	TAS	VIC	WA
2	137	3	43	16	1	72	0

3,916



ACT	NSW	NT	QLD	SA	TAS	VIC	WA
57	2,099	158	724	224	15	638	1

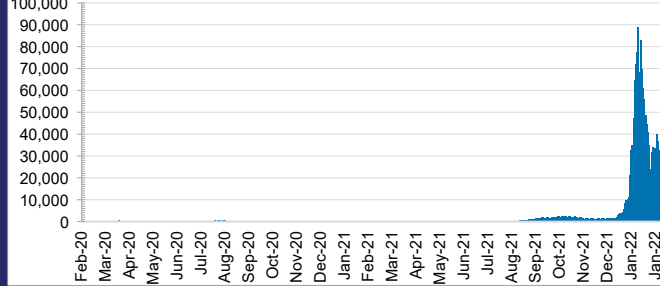
61,768,507



3.9% POSITIVE

ACT	NSW	NT	QLD
862,794	28,007,047	680,176	6,617,729
POSITIVE	POSITIVE	POSITIVE	POSITIVE
4.5%	3.4%	3.4%	5.0%
SA	TAS	VIC	WA
3,661,366	534,412	19,080,016	2,324,967
POSITIVE	POSITIVE	POSITIVE	POSITIVE
3.2%	2.8%	4.7%	0.1%

DAILY NUMBER OF REPORTED CASES

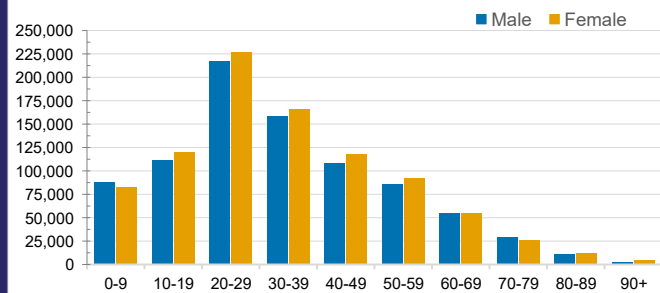


CASES IN AGED CARE SERVICES

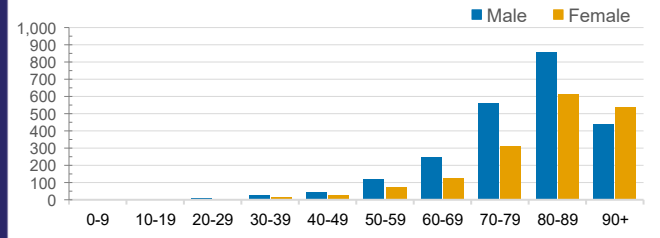
Confirmed Cases	Australia	ACT	NSW	NT	QLD	SA	TAS	VIC	WA
Residential Care Recipients	16118 (1537)	109 (11)	6027 (407)	23 (2)	2811 (135)	1198 (89)	150 (3)	5800 (890)	0
In Home Care Recipients	205 (13)	0	45 (3)	0	15	1	5 (2)	138 (7)	1 (1)

Cases in care recipients (deaths)

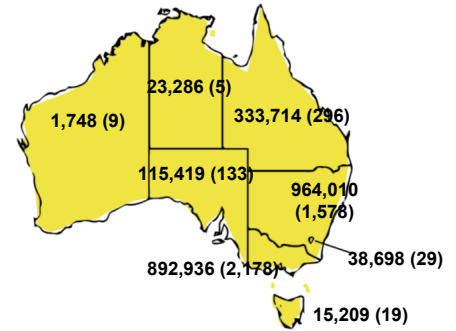
CASES BY AGE GROUP AND SEX



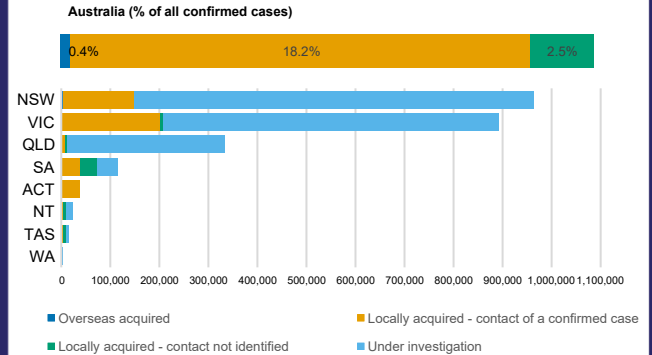
DEATHS BY AGE GROUP AND SEX



CASES (DEATHS) BY STATE AND TERRITORIES



CASES BY SOURCE OF INFECTION



PUBLIC HEALTH RESPONSE MEASURE

