



CURRENT STATUS OF CONFIRMED CASES



286



ACT	NSW	NT	QLD	SA	TAS	VIC	WA
2	147	3	47	13	1	73	0



ACT	NSW	NT	QLD	SA	TAS	VIC	WA
60	2,321	158	726	218	11	652	1

61,672,838



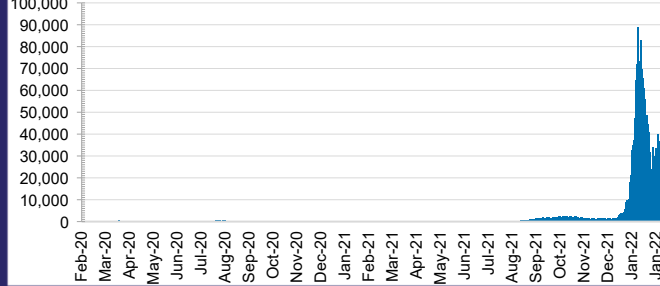
3.8% POSITIVE

TOTAL TESTS CONDUCTED

ACT	NSW	NT	QLD
861,959	27,971,134	678,807	6,607,871
POSITIVE	POSITIVE	POSITIVE	POSITIVE
4.5%	3.4%	3.3%	5.0%

SA	TAS	VIC	WA
3,654,002	533,344	19,063,678	2,302,043
POSITIVE	POSITIVE	POSITIVE	POSITIVE
3.1%	2.8%	4.6%	0.1%

DAILY NUMBER OF REPORTED CASES

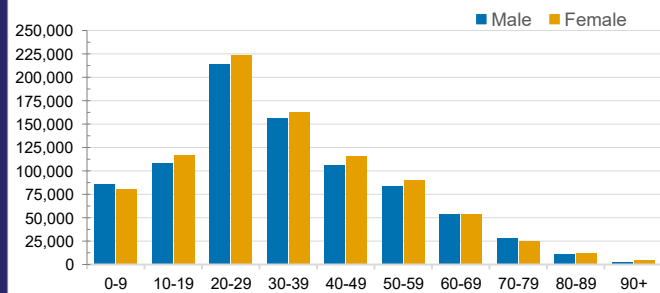


CASES IN AGED CARE SERVICES

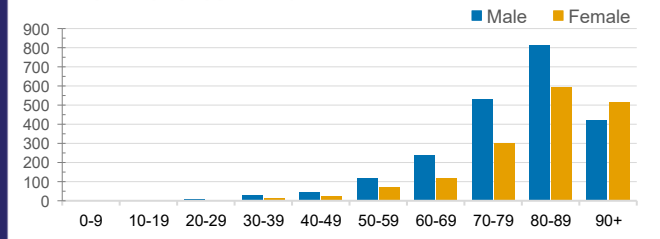
Confirmed Cases	Australia	ACT	NSW	NT	QLD	SA	TAS	VIC	WA
Residential Care Recipients	15496 (1500)	109 (11)	5837 (396)	22 (1)	2532 (121)	1132 (87)	143 (3)	5721 (881)	0
In Home Care Recipients	205 (13)	0	45 (3)	0	15	1	5 (2)	138 (7)	1 (1)

Cases in care recipients (deaths)

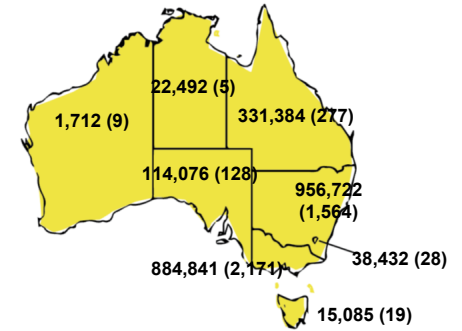
CASES BY AGE GROUP AND SEX



DEATHS BY AGE GROUP AND SEX

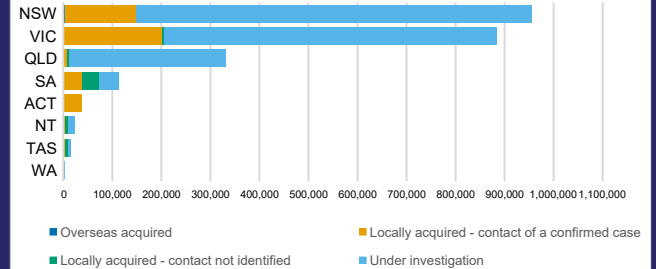


CASES (DEATHS) BY STATE AND TERRITORIES



CASES BY SOURCE OF INFECTION

Australia (% of all confirmed cases)



PUBLIC HEALTH RESPONSE MEASURE

Proportion of total cases under investigation

