



CURRENT STATUS OF CONFIRMED CASES



304



ACT	NSW	NT	QLD	SA	TAS	VIC	WA
1	152	5	48	16	2	80	0



4,256

ACT	NSW	NT	QLD	SA	TAS	VIC	WA
63	2,337	151	790	218	10	687	0

61,590,128

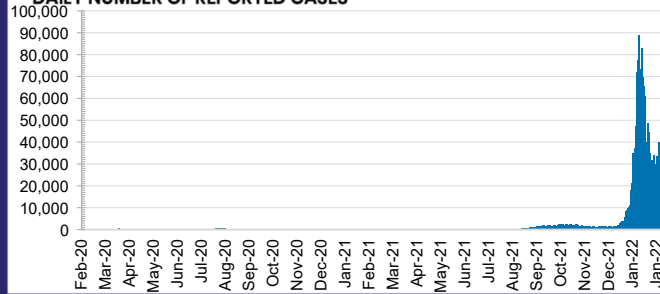


TOTAL TESTS CONDUCTED

3.8% POSITIVE

ACT	NSW	NT	QLD
861,182	27,935,437	677,375	6,593,428
POSITIVE	POSITIVE	POSITIVE	POSITIVE
4.4%	3.4%	3.2%	5.0%
SA	TAS	VIC	WA
3,645,308	532,301	19,043,054	2,302,043
POSITIVE	POSITIVE	POSITIVE	POSITIVE
3.1%	2.8%	4.6%	0.1%

DAILY NUMBER OF REPORTED CASES

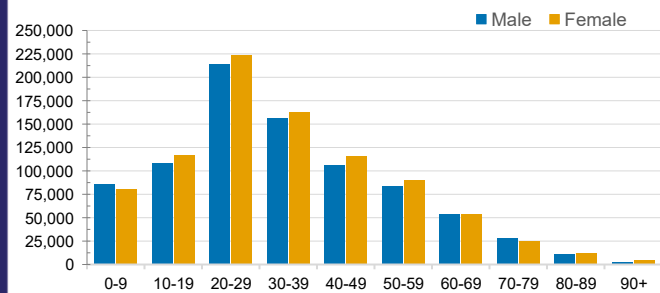


CASES IN AGED CARE SERVICES

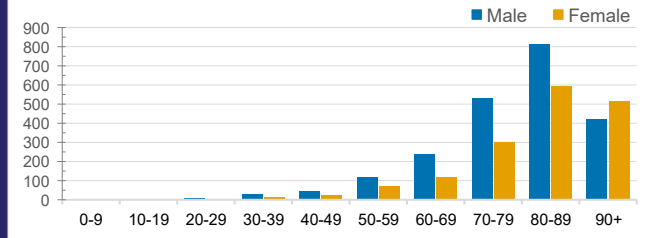
Confirmed Cases	Australia	ACT	NSW	NT	QLD	SA	TAS	VIC	WA
Residential Care Recipients	15496 (1500)	109 (11)	5837 (396)	22 (1)	2532 (121)	1132 (87)	143 (3)	5721 (881)	0
In Home Care Recipients	205 (13)	0	45 (3)	0	15	1	5 (2)	138 (7)	1 (1)

Cases in care recipients (deaths)

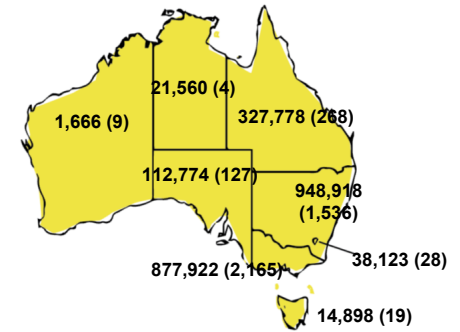
CASES BY AGE GROUP AND SEX



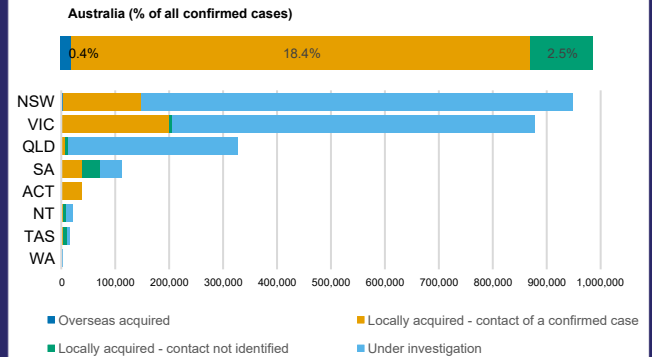
DEATHS BY AGE GROUP AND SEX



CASES (DEATHS) BY STATE AND TERRITORIES



CASES BY SOURCE OF INFECTION



PUBLIC HEALTH RESPONSE MEASURE

