



**CURRENT STATUS OF CONFIRMED CASES**



**317**



ACT	NSW	NT	QLD	SA	TAS	VIC	WA
1	160	6	47	18	2	82	1



**4,594**

ACT	NSW	NT	QLD	SA	TAS	VIC	WA
63	2,578	141	820	226	13	752	1

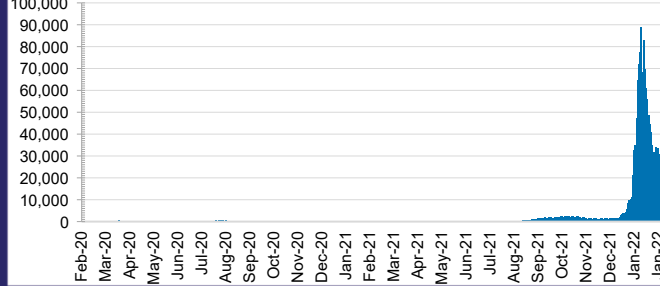
**61,391,571**



**3.7%** POSITIVE

ACT	NSW	NT	QLD
857,256	27,866,454	665,367	6,555,435
POSITIVE	POSITIVE	POSITIVE	POSITIVE
4.4%	3.3%	2.9%	4.9%
SA	TAS	VIC	WA
3,627,205	529,342	18,996,221	2,294,291
POSITIVE	POSITIVE	POSITIVE	POSITIVE
3.0%	2.7%	4.5%	0.1%

**DAILY NUMBER OF REPORTED CASES**

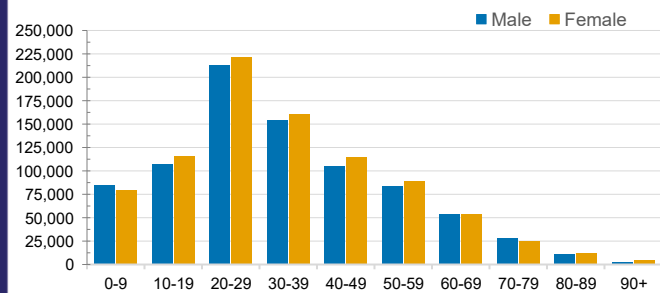


**CASES IN AGED CARE SERVICES**

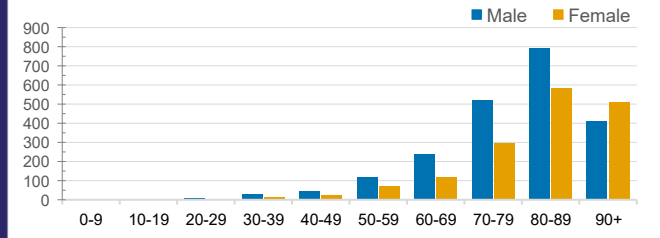
Confirmed Cases	Australia	ACT	NSW	NT	QLD	SA	TAS	VIC	WA
Residential Care Recipients	15250 (1479)	105 (11)	5816 (385)	22 (1)	2393 (120)	1132 (83)	140 (3)	5642 (876)	0
In Home Care Recipients	205 (13)	0	45 (3)	0	15	1	5 (2)	138 (7)	1 (1)

Cases in care recipients (deaths)

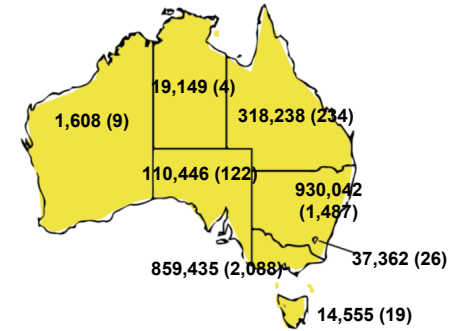
**CASES BY AGE GROUP AND SEX**



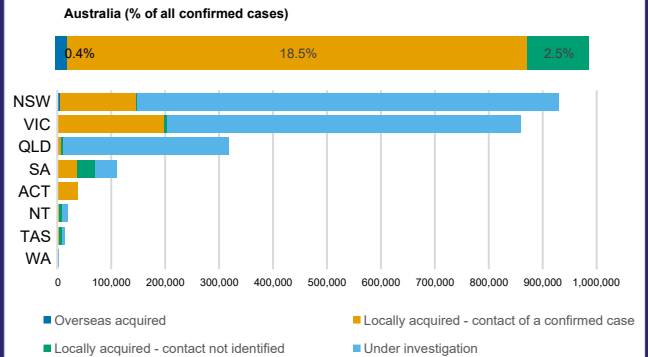
**DEATHS BY AGE GROUP AND SEX**



**CASES (DEATHS) BY STATE AND TERRITORIES**



**CASES BY SOURCE OF INFECTION**



**PUBLIC HEALTH RESPONSE MEASURE**

