



CURRENT STATUS OF CONFIRMED CASES



136



ACT	NSW	NT	QLD	SA	TAS	VIC	WA
0	55	4	25	10	0	42	0

2,003



ACT	NSW	NT	QLD	SA	TAS	VIC	WA
44	1,136	96	311	109	11	283	13

63,523,582

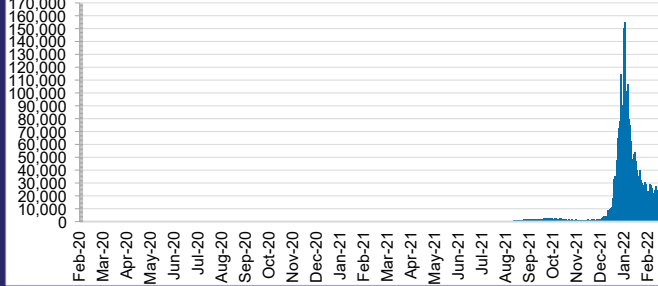


**TOTAL TESTS
REPORTED**

ACT	NSW	NT	QLD
901,577	28,658,490	710,823	6,836,070

SA	TAS	VIC	WA
3,851,083	560,057	19,481,752	2,523,730

DAILY NUMBER OF REPORTED CASES

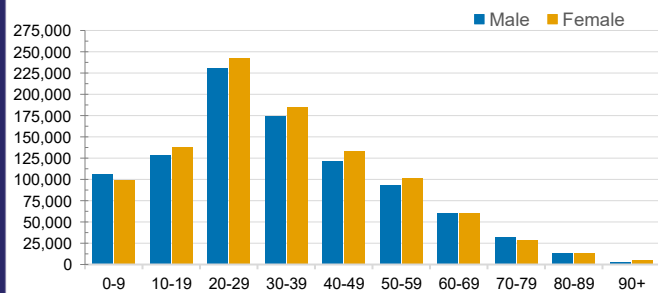


CASES IN AGED CARE SERVICES

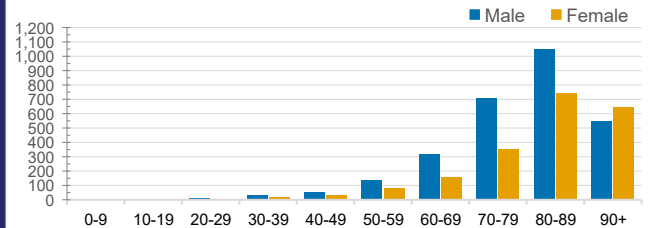
Confirmed Cases	Australia	ACT	NSW	NT	QLD	SA	TAS	VIC	WA
Residential Care Recipients	19372 (1788)	198 (15)	7345 (539)	103 (3)	3776 (198)	1358 (100)	194 (8)	6355 (925)	43
In Home Care Recipients	205 (13)	0	45 (3)	0	15	1	5 (2)	138 (7)	1 (1)

Cases in care recipients (deaths)

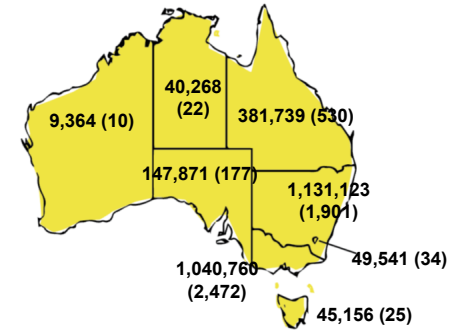
CASES BY AGE GROUP AND SEX



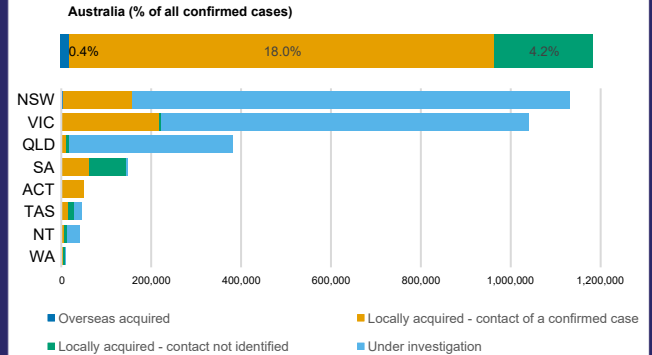
DEATHS BY AGE GROUP AND SEX



CASES (DEATHS) BY STATE AND TERRITORIES



CASES BY SOURCE OF INFECTION



PUBLIC HEALTH RESPONSE MEASURE

