



CURRENT STATUS OF CONFIRMED CASES



137



ACT	NSW	NT	QLD	SA	TAS	VIC	WA
0	58	6	24	11	0	38	0



1,995

ACT	NSW	NT	QLD	SA	TAS	VIC	WA
43	1,146	101	295	114	9	274	13

63,447,865

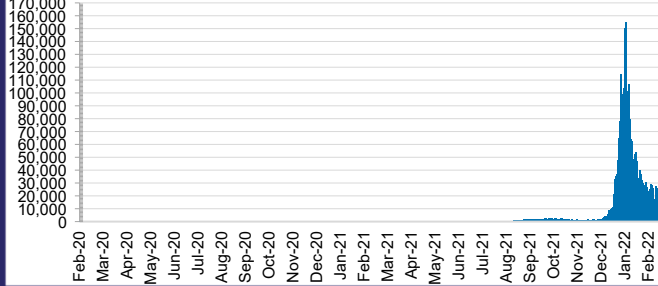


**TOTAL TESTS
REPORTED**

ACT	NSW	NT	QLD
899,965	28,638,739	709,761	6,832,604

SA	TAS	VIC	WA
3,843,741	559,253	19,468,005	2,495,797

DAILY NUMBER OF REPORTED CASES

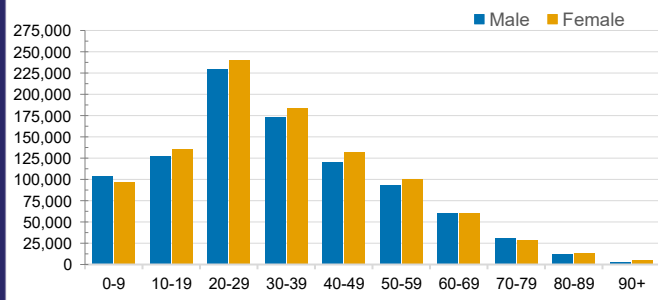


CASES IN AGED CARE SERVICES

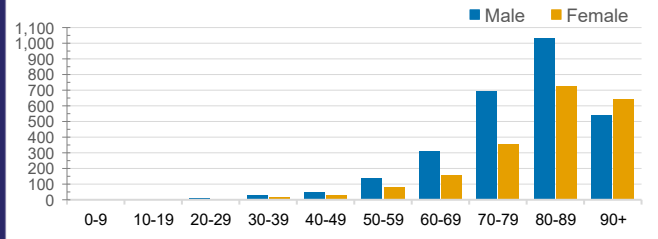
Confirmed Cases	Australia	ACT	NSW	NT	QLD	SA	TAS	VIC	WA
Residential Care Recipients	18880 (1781)	198 (15)	7200 (537)	90 (3)	3582 (197)	1310 (100)	168 (6)	6299 (923)	33
In Home Care Recipients	205 (13)	0	45 (3)	0	15	1	5 (2)	138 (7)	1 (1)

Cases in care recipients (deaths)

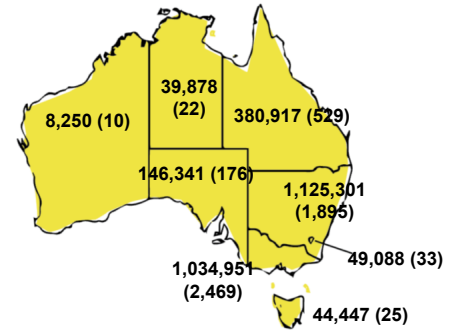
CASES BY AGE GROUP AND SEX



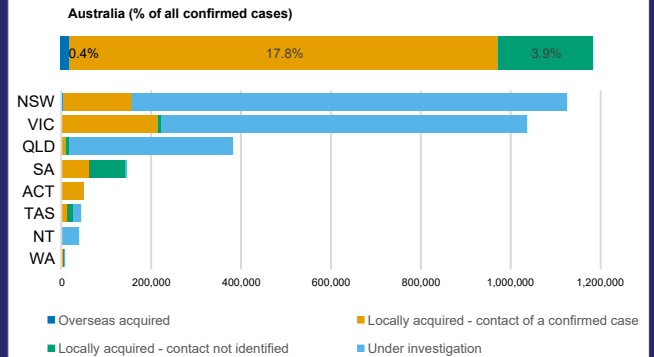
DEATHS BY AGE GROUP AND SEX



CASES (DEATHS) BY STATE AND TERRITORIES



CASES BY SOURCE OF INFECTION



PUBLIC HEALTH RESPONSE MEASURE

