



CURRENT STATUS OF CONFIRMED CASES



157



ACT	NSW	NT	QLD	SA	TAS	VIC	WA
3	64	7	30	13	2	38	0



2,072

ACT	NSW	NT	QLD	SA	TAS	VIC	WA
41	1,144	101	350	112	11	301	12

63,315,728

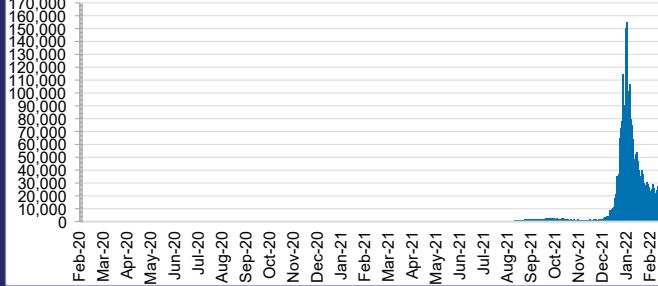


**TOTAL TESTS
REPORTED**

ACT	NSW	NT	QLD
896,116	28,585,420	704,837	6,817,601

SA	TAS	VIC	WA
3,824,500	557,045	19,434,412	2,495,797

DAILY NUMBER OF REPORTED CASES

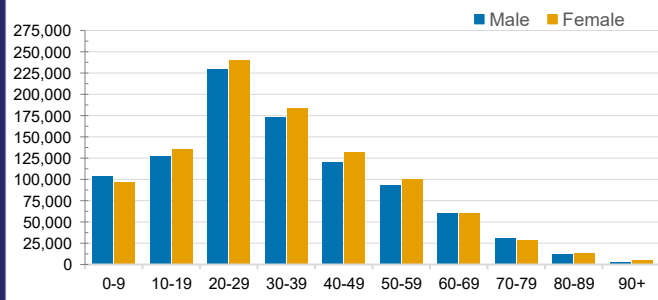


CASES IN AGED CARE SERVICES

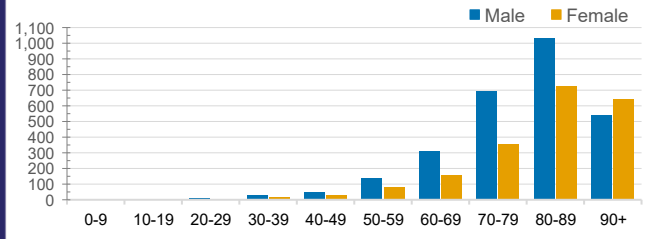
Confirmed Cases	Australia	ACT	NSW	NT	QLD	SA	TAS	VIC	WA
Residential Care Recipients	18880 (1781)	198 (15)	7200 (537)	90 (3)	3582 (197)	1310 (100)	168 (6)	6299 (923)	33
In Home Care Recipients	205 (13)	0	45 (3)	0	15	1	5 (2)	138 (7)	1 (1)

Cases in care recipients (deaths)

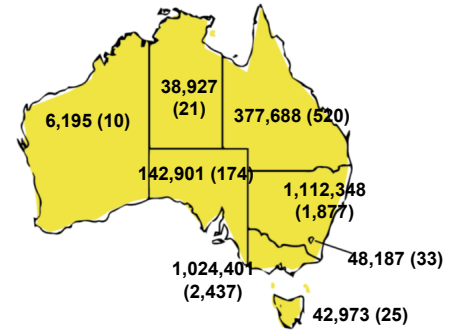
CASES BY AGE GROUP AND SEX



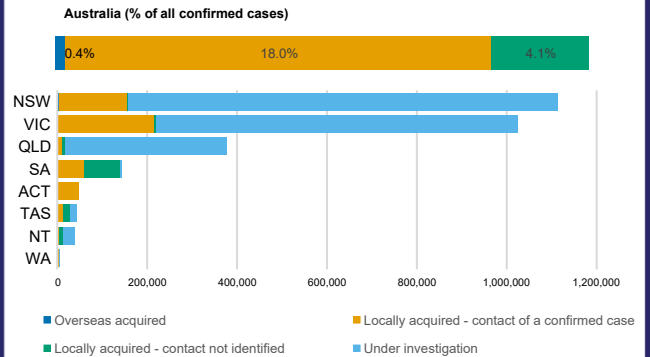
DEATHS BY AGE GROUP AND SEX



CASES (DEATHS) BY STATE AND TERRITORIES



CASES BY SOURCE OF INFECTION



PUBLIC HEALTH RESPONSE MEASURE

