



**CURRENT STATUS OF CONFIRMED CASES**



**172**



ACT	NSW	NT	QLD	SA	TAS	VIC	WA
2	69	4	35	14	2	46	0



**2,322**

ACT	NSW	NT	QLD	SA	TAS	VIC	WA
40	1,246	131	379	192	10	319	5

**63,125,647**

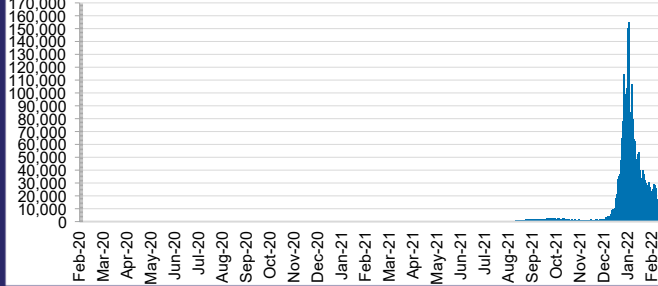


**TOTAL TESTS  
REPORTED**

ACT	NSW	NT	QLD
891,348	28,516,047	702,796	6,796,461

SA	TAS	VIC	WA
3,800,961	554,696	19,394,127	2,469,211

**DAILY NUMBER OF REPORTED CASES**

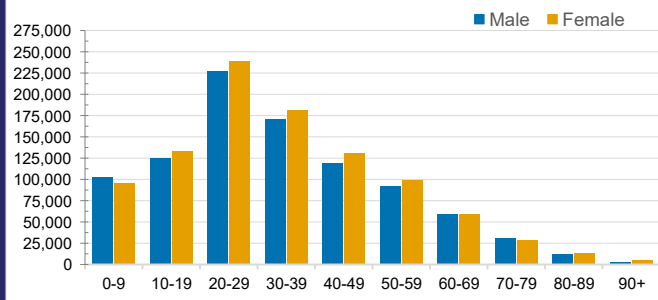


**CASES IN AGED CARE SERVICES**

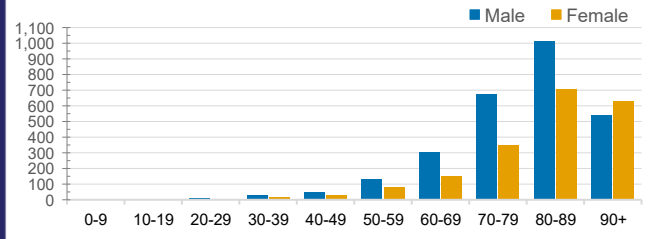
Confirmed Cases	Australia	ACT	NSW	NT	QLD	SA	TAS	VIC	WA
Residential Care Recipients	18123 (1719)	198 (15)	6881 (506)	83 (2)	3403 (183)	1251 (94)	140 (6)	6138 (913)	29
In Home Care Recipients	205 (13)	0	45 (3)	0	15	1	5 (2)	138 (7)	1 (1)

Cases in care recipients (deaths)

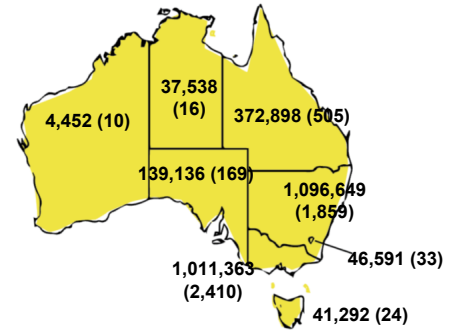
**CASES BY AGE GROUP AND SEX**



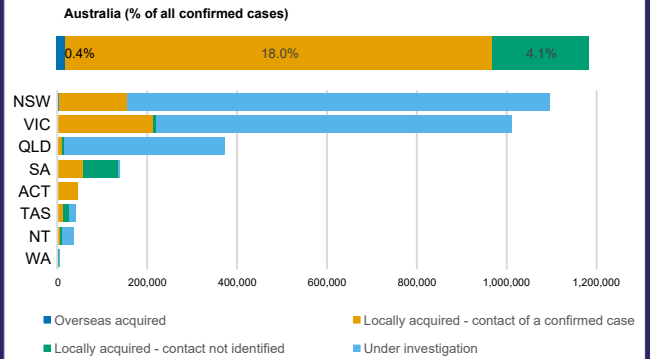
**DEATHS BY AGE GROUP AND SEX**



**CASES (DEATHS) BY STATE AND TERRITORIES**



**CASES BY SOURCE OF INFECTION**



**PUBLIC HEALTH RESPONSE MEASURE**

