



**CURRENT STATUS OF CONFIRMED CASES**



**171**



ACT	NSW	NT	QLD	SA	TAS	VIC	WA
1	71	3	34	12	2	48	0



**2,415**

ACT	NSW	NT	QLD	SA	TAS	VIC	WA
41	1,293	123	394	205	11	345	3

**63,024,944**

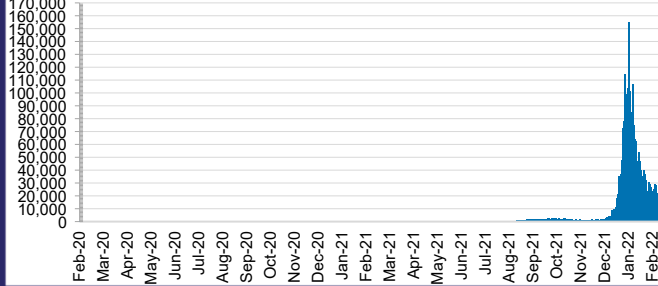


**TOTAL TESTS  
REPORTED**

ACT	NSW	NT	QLD
888,830	28,480,054	701,207	6,783,901

SA	TAS	VIC	WA
3,790,363	553,321	19,371,231	2,456,037

**DAILY NUMBER OF REPORTED CASES**

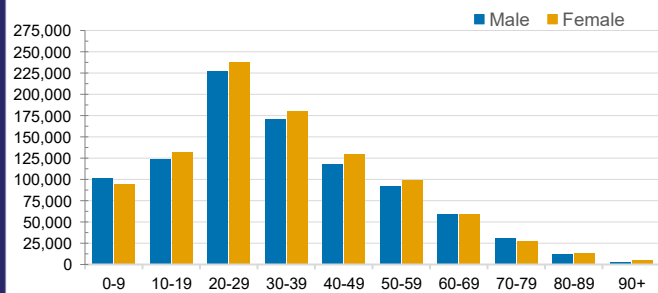


**CASES IN AGED CARE SERVICES**

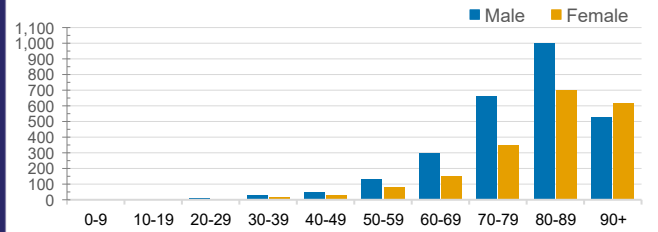
Confirmed Cases	Australia	ACT	NSW	NT	QLD	SA	TAS	VIC	WA
Residential Care Recipients	18064 (1717)	196 (15)	6864 (504)	70 (2)	3403 (183)	1251 (94)	140 (6)	6111 (913)	29
In Home Care Recipients	205 (13)	0	45 (3)	0	15	1	5 (2)	138 (7)	1 (1)

Cases in care recipients (deaths)

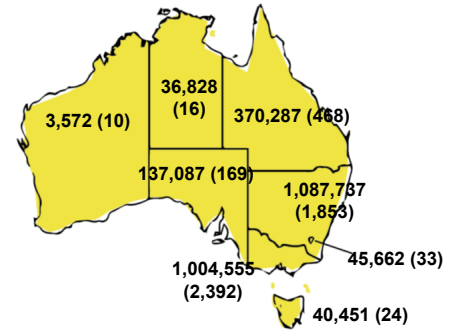
**CASES BY AGE GROUP AND SEX**



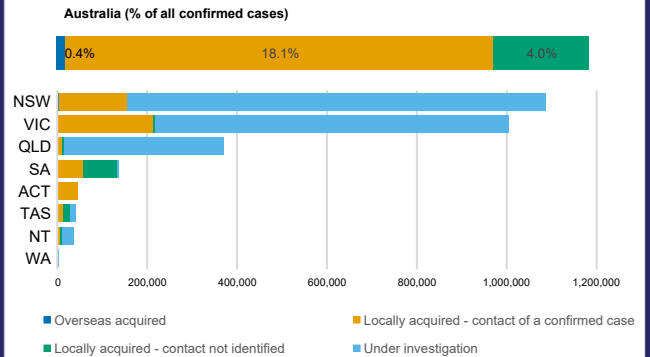
**DEATHS BY AGE GROUP AND SEX**



**CASES (DEATHS) BY STATE AND TERRITORIES**



**CASES BY SOURCE OF INFECTION**



**PUBLIC HEALTH RESPONSE MEASURE**

