



CURRENT STATUS OF CONFIRMED CASES



349



ACT	NSW	NT	QLD	SA	TAS	VIC	WA
1	170	5	50	21	2	99	1



4,665

ACT	NSW	NT	QLD	SA	TAS	VIC	WA
61	2,623	129	837	233	13	768	1

61,281,383

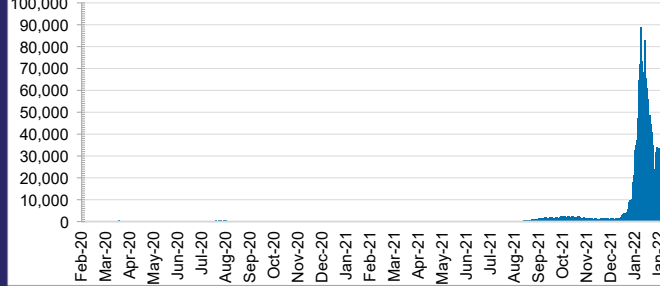


3.7% POSITIVE

ACT	NSW	NT	QLD
855,622	27,827,606	663,856	6,535,713
POSITIVE	POSITIVE	POSITIVE	POSITIVE
4.3%	3.3%	2.7%	4.8%

SA	TAS	VIC	WA
3,618,083	527,659	18,966,910	2,285,934
POSITIVE	POSITIVE	POSITIVE	POSITIVE
3.0%	2.7%	4.5%	0.1%

DAILY NUMBER OF REPORTED CASES

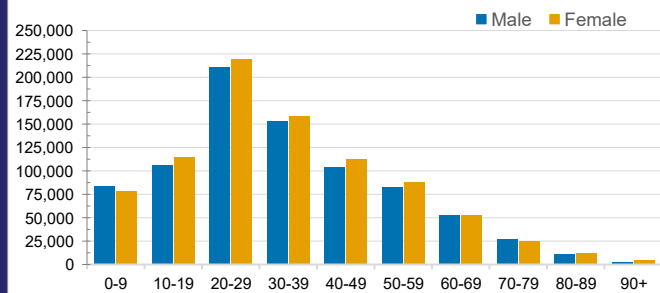


CASES IN AGED CARE SERVICES

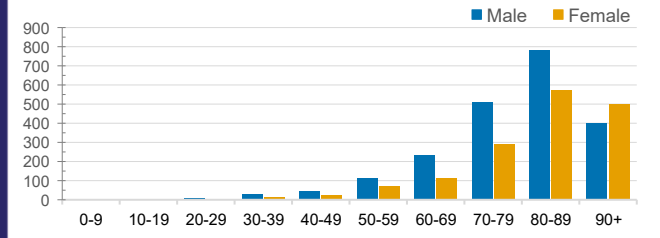
Confirmed Cases	Australia	ACT	NSW	NT	QLD	SA	TAS	VIC	WA
Residential Care Recipients	15145 (1476)	104 (11)	5760 (385)	22	2384 (120)	1132 (83)	140 (3)	5603 (874)	0
In Home Care Recipients	205 (13)	0	45 (3)	0	15	1	5 (2)	138 (7)	1 (1)

Cases in care recipients (deaths)

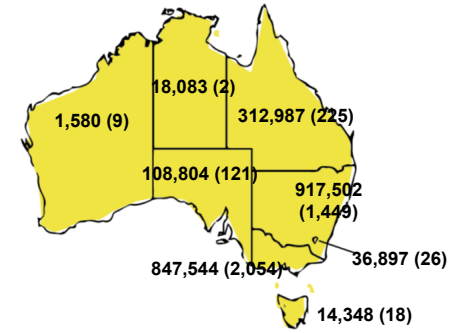
CASES BY AGE GROUP AND SEX



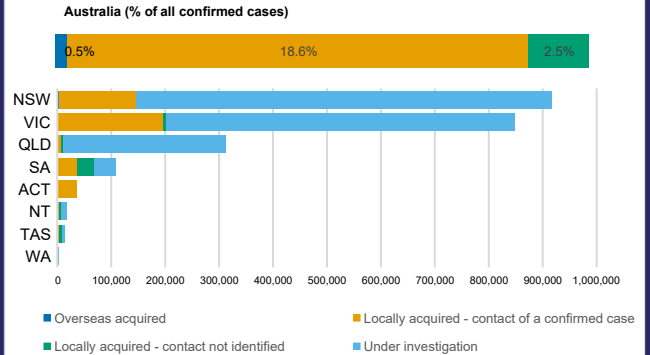
DEATHS BY AGE GROUP AND SEX



CASES (DEATHS) BY STATE AND TERRITORIES



CASES BY SOURCE OF INFECTION



PUBLIC HEALTH RESPONSE MEASURE

