



CURRENT STATUS OF CONFIRMED CASES



190

CURRENT CASES
INTENSIVE CARE UNITS (ICU)



ACT	NSW	NT	QLD	SA	TAS	VIC	WA
2	81	2	36	12	2	55	0



2,467

CURRENT CASES
ADMITTED TO HOSPITALS

ACT	NSW	NT	QLD	SA	TAS	VIC	WA
40	1,297	157	414	182	12	365	0



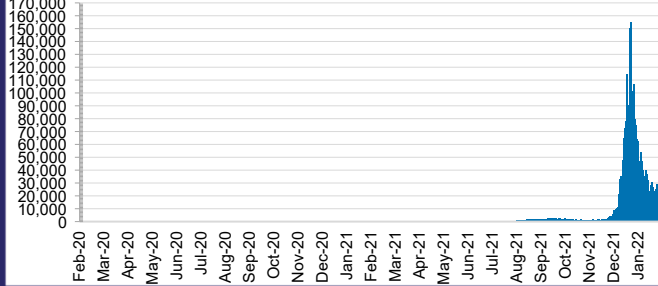
62,818,043

TOTAL TESTS
REPORTED

ACT	NSW	NT	QLD
884,657	28,405,579	698,043	6,763,418

SA	TAS	VIC	WA
3,766,685	550,255	19,327,504	2,421,902

DAILY NUMBER OF REPORTED CASES

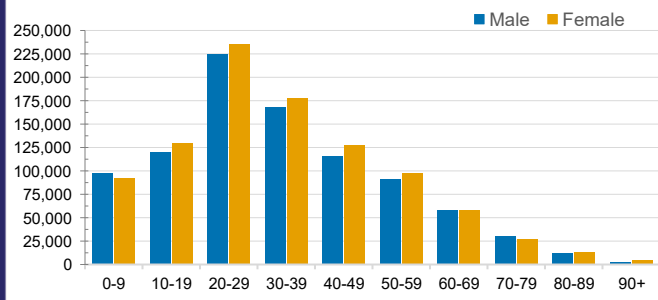


CASES IN AGED CARE SERVICES

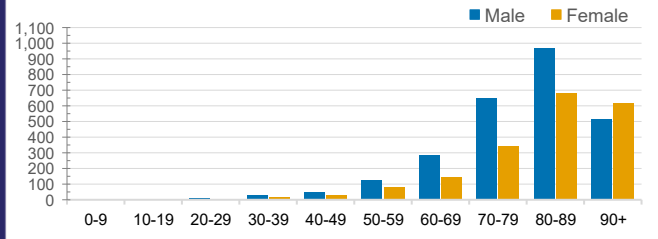
Confirmed Cases	Australia	ACT	NSW	NT	QLD	SA	TAS	VIC	WA
Residential Care Recipients	17889 (1709)	195 (15)	6690 (492)	54 (2)	3382 (184)	1277 (96)	167 (6)	6096 (914)	28
In Home Care Recipients	205 (13)	0	45 (3)	0	15	1	5 (2)	138 (7)	1 (1)

Cases in care recipients (deaths)

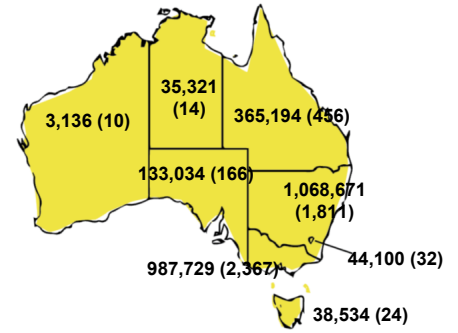
CASES BY AGE GROUP AND SEX



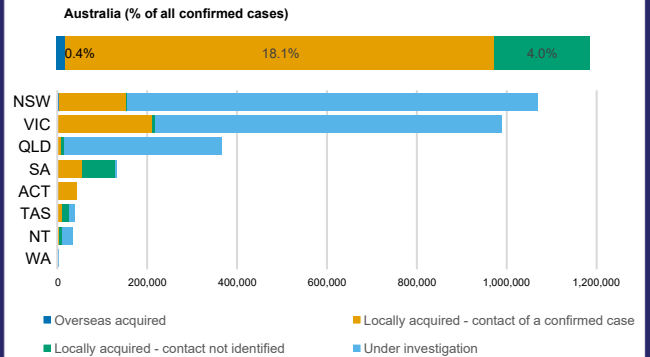
DEATHS BY AGE GROUP AND SEX



CASES (DEATHS) BY STATE AND TERRITORIES



CASES BY SOURCE OF INFECTION



PUBLIC HEALTH RESPONSE MEASURE

