



CURRENT STATUS OF CONFIRMED CASES



223



| ACT | NSW | NT | QLD | SA | TAS | VIC | WA |
|-----|-----|----|-----|----|-----|-----|----|
| 3 | 92 | 1 | 38 | 19 | 2 | 68 | 0 |

2,738



| ACT | NSW | NT | QLD | SA | TAS | VIC | WA |
|-----|-------|-----|-----|-----|-----|-----|----|
| 48 | 1,478 | 143 | 432 | 227 | 13 | 397 | 0 |

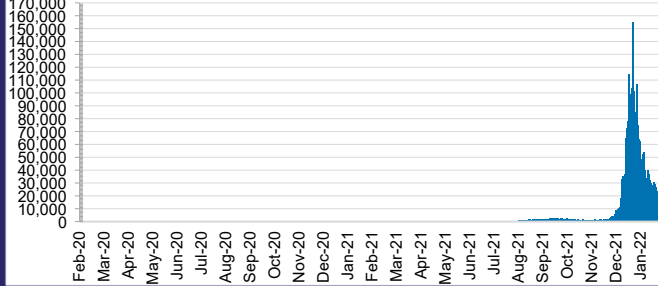
62,551,107



4.2% POSITIVE

| ACT | NSW | NT | QLD |
|-----------|------------|------------|-----------|
| 878,504 | 28,295,745 | 693,794 | 6,726,629 |
| POSITIVE | POSITIVE | POSITIVE | POSITIVE |
| 4.9% | 3.7% | 4.7% | 5.3% |
| SA | TAS | VIC | WA |
| 3,739,715 | 546,352 | 19,266,955 | 2,403,413 |
| POSITIVE | POSITIVE | POSITIVE | POSITIVE |
| 3.4% | 6.7% | 5.0% | 0.1% |

DAILY NUMBER OF REPORTED CASES

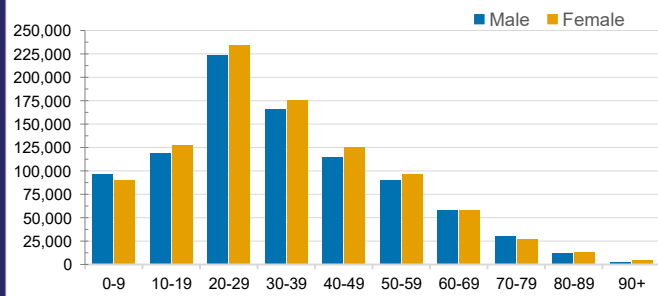


CASES IN AGED CARE SERVICES

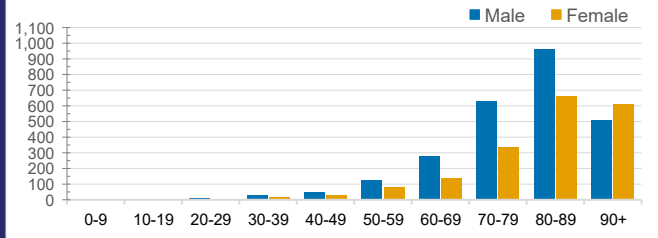
| Confirmed Cases | Australia | ACT | NSW | NT | QLD | SA | TAS | VIC | WA |
|-----------------------------|--------------|----------|------------|--------|------------|-----------|---------|------------|-------|
| Residential Care Recipients | 17629 (1678) | 176 (15) | 6518 (469) | 38 (2) | 3351 (182) | 1277 (95) | 167 (6) | 6091 (909) | 11 |
| In Home Care Recipients | 205 (13) | 0 | 45 (3) | 0 | 15 | 1 | 5 (2) | 138 (7) | 1 (1) |

Cases in care recipients (deaths)

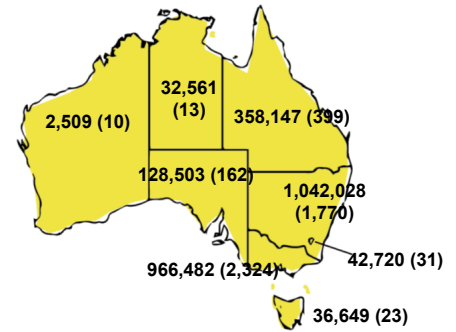
CASES BY AGE GROUP AND SEX



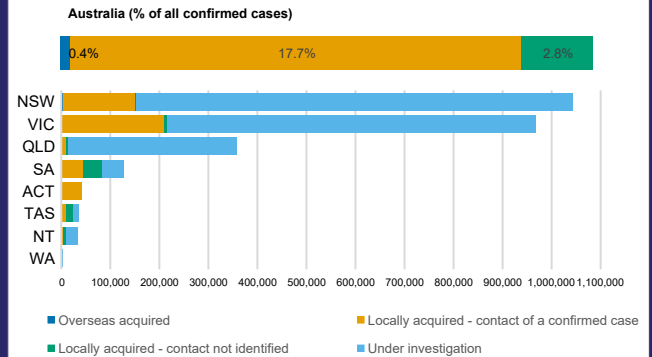
DEATHS BY AGE GROUP AND SEX



CASES (DEATHS) BY STATE AND TERRITORIES



CASES BY SOURCE OF INFECTION



PUBLIC HEALTH RESPONSE MEASURE

