



CURRENT STATUS OF CONFIRMED CASES



223



ACT	NSW	NT	QLD	SA	TAS	VIC	WA
4	93	1	45	17	1	62	0

3,010



ACT	NSW	NT	QLD	SA	TAS	VIC	WA
50	1,614	164	496	211	10	465	0

62,318,432

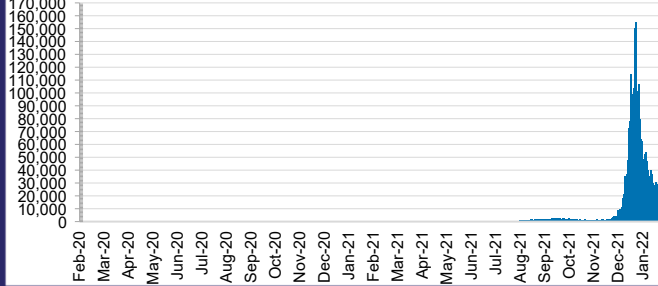


**TOTAL TESTS
CONDUCTED**

4.1% POSITIVE

ACT	NSW	NT	QLD
873,846	28,211,485	689,777	6,703,478
POSITIVE	POSITIVE	POSITIVE	POSITIVE
4.7%	3.6%	4.3%	5.3%
SA	TAS	VIC	WA
3,715,758	543,391	19,212,685	2,368,012
POSITIVE	POSITIVE	POSITIVE	POSITIVE
3.3%	3.0%	4.9%	0.1%

DAILY NUMBER OF REPORTED CASES

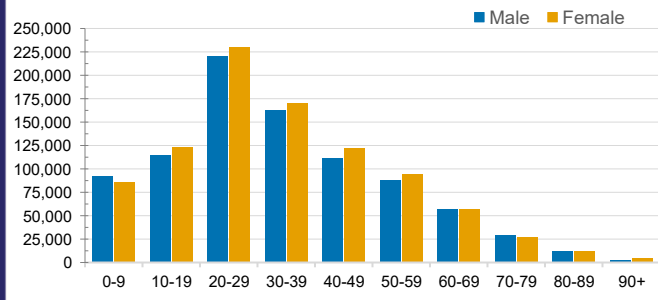


CASES IN AGED CARE SERVICES

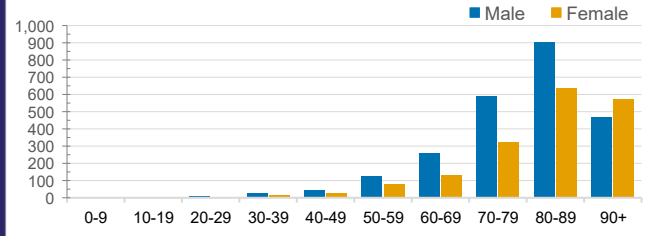
Confirmed Cases	Australia	ACT	NSW	NT	QLD	SA	TAS	VIC	WA
Residential Care Recipients	17002 (1618)	149 (14)	6191 (431)	23 (2)	3211 (165)	1246 (94)	167 (6)	6014 (906)	1
In Home Care Recipients	205 (13)	0	45 (3)	0	15	1	5 (2)	138 (7)	1 (1)

Cases in care recipients (deaths)

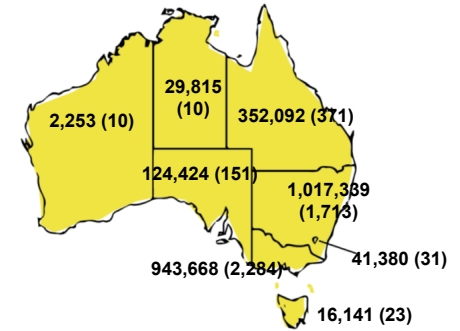
CASES BY AGE GROUP AND SEX



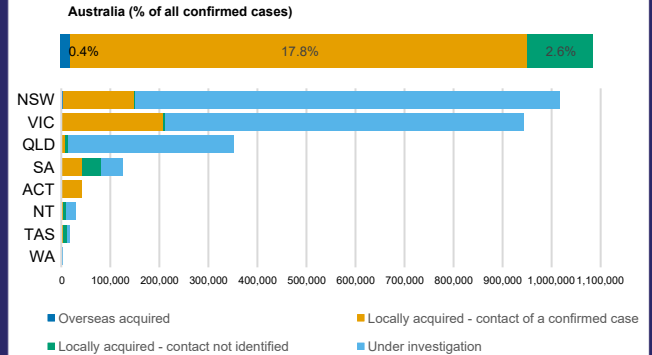
DEATHS BY AGE GROUP AND SEX



CASES (DEATHS) BY STATE AND TERRITORIES



CASES BY SOURCE OF INFECTION



PUBLIC HEALTH RESPONSE MEASURE

