



**CURRENT STATUS OF CONFIRMED CASES**



**257**



| ACT | NSW | NT | QLD | SA | TAS | VIC | WA |
|-----|-----|----|-----|----|-----|-----|----|
| 3   | 104 | 2  | 51  | 17 | 1   | 79  | 0  |

**3,126**



| ACT | NSW   | NT  | QLD | SA  | TAS | VIC | WA |
|-----|-------|-----|-----|-----|-----|-----|----|
| 51  | 1,650 | 170 | 538 | 213 | 17  | 487 | 0  |

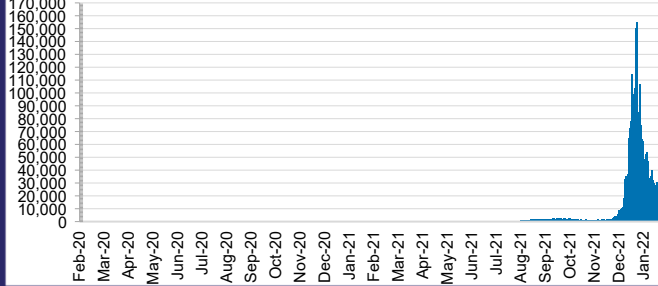
**62,235,928**



**4.0% POSITIVE**

| ACT       | NSW        | NT         | QLD       |
|-----------|------------|------------|-----------|
| 872,141   | 28,184,715 | 688,675    | 6,678,643 |
| POSITIVE  | POSITIVE   | POSITIVE   | POSITIVE  |
| 4.7%      | 3.6%       | 4.2%       | 5.2%      |
| SA        | TAS        | VIC        | WA        |
| 3,707,814 | 542,421    | 19,193,507 | 2,368,012 |
| POSITIVE  | POSITIVE   | POSITIVE   | POSITIVE  |
| 3.3%      | 3.0%       | 4.9%       | 0.1%      |

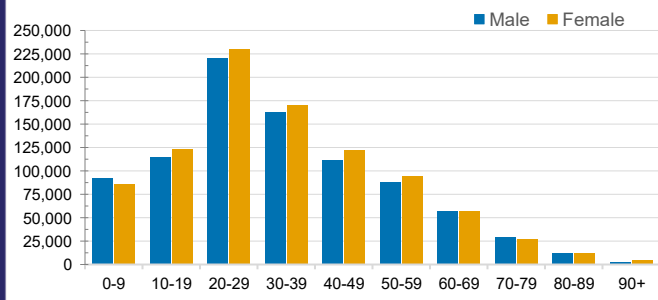
**DAILY NUMBER OF REPORTED CASES**



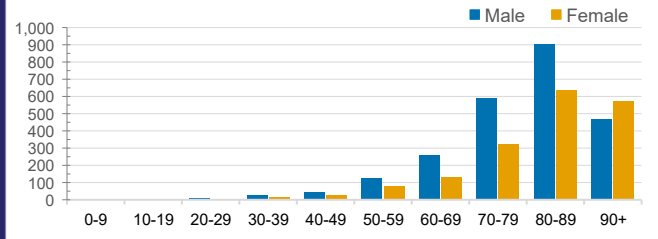
**CASES IN AGED CARE SERVICES**

| Confirmed Cases                   | Australia    | ACT      | NSW        | NT     | QLD        | SA        | TAS     | VIC        | WA    |
|-----------------------------------|--------------|----------|------------|--------|------------|-----------|---------|------------|-------|
| Residential Care Recipients       | 17002 (1618) | 149 (14) | 6191 (431) | 23 (2) | 3211 (165) | 1246 (94) | 167 (6) | 6014 (906) | 1     |
| In Home Care Recipients           | 205 (13)     | 0        | 45 (3)     | 0      | 15         | 1         | 5 (2)   | 138 (7)    | 1 (1) |
| Cases in care recipients (deaths) |              |          |            |        |            |           |         |            |       |

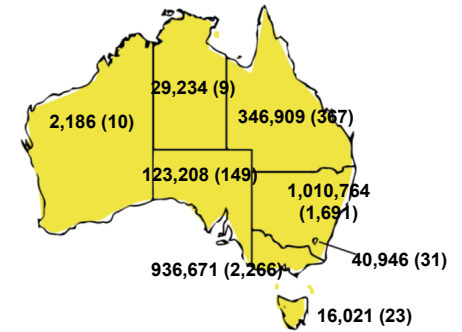
**CASES BY AGE GROUP AND SEX**



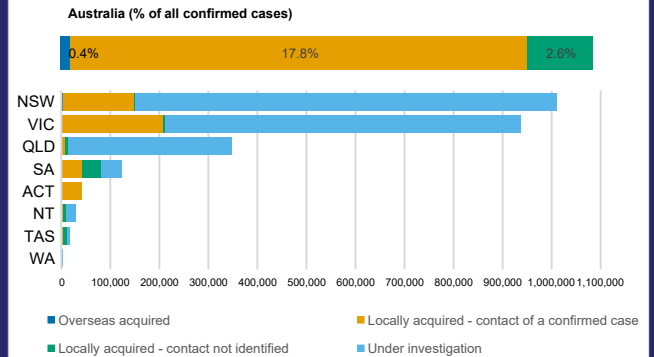
**DEATHS BY AGE GROUP AND SEX**



**CASES (DEATHS) BY STATE AND TERRITORIES**



**CASES BY SOURCE OF INFECTION**



**PUBLIC HEALTH RESPONSE MEASURE**

