



**CURRENT STATUS OF CONFIRMED CASES**



**258**



ACT	NSW	NT	QLD	SA	TAS	VIC	WA
3	108	3	45	16	1	82	0

**3,293**



ACT	NSW	NT	QLD	SA	TAS	VIC	WA
50	1,716	164	584	210	16	553	0

**62,133,948**

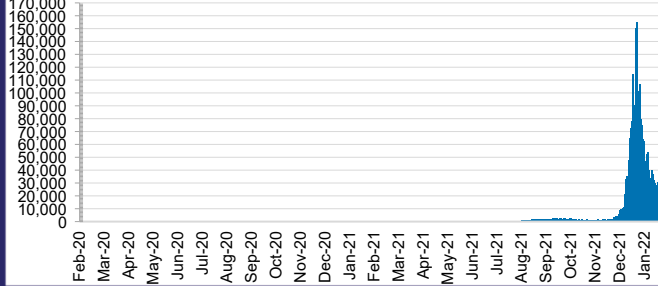


**4.0% POSITIVE**

**TOTAL TESTS  
CONDUCTED**

ACT	NSW	NT	QLD
870,593	28,153,064	687,152	6,659,396
POSITIVE	POSITIVE	POSITIVE	POSITIVE
4.7%	3.6%	4.1%	5.2%
SA	TAS	VIC	WA
3,689,100	539,559	19,173,643	2,361,441
POSITIVE	POSITIVE	POSITIVE	POSITIVE
3.3%	2.9%	4.8%	0.1%

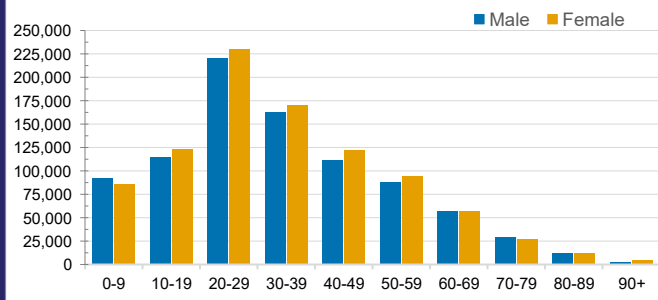
**DAILY NUMBER OF REPORTED CASES**



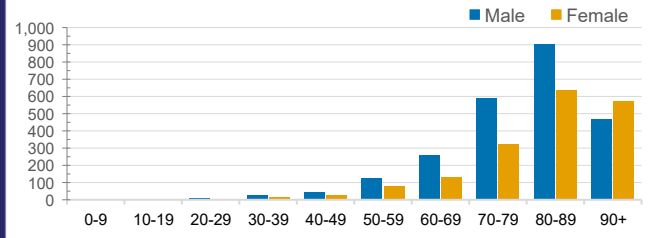
**CASES IN AGED CARE SERVICES**

Confirmed Cases	Australia	ACT	NSW	NT	QLD	SA	TAS	VIC	WA
Residential Care Recipients	17002 (1618)	149 (14)	6191 (431)	23 (2)	3211 (165)	1246 (94)	167 (6)	6014 (906)	1
In Home Care Recipients	205 (13)	0	45 (3)	0	15	1	5 (2)	138 (7)	1 (1)
Cases in care recipients (deaths)									

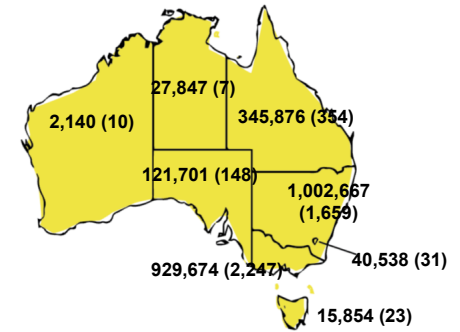
**CASES BY AGE GROUP AND SEX**



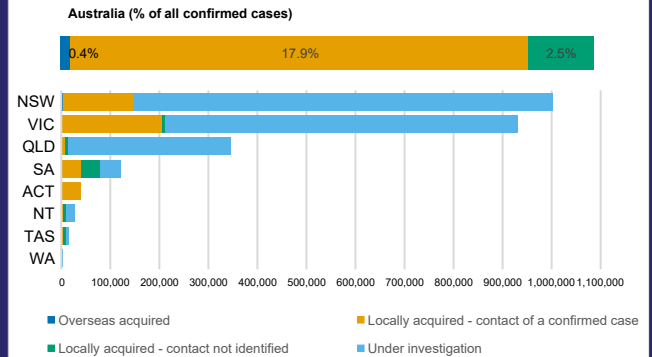
**DEATHS BY AGE GROUP AND SEX**



**CASES (DEATHS) BY STATE AND TERRITORIES**



**CASES BY SOURCE OF INFECTION**



**PUBLIC HEALTH RESPONSE MEASURE**

