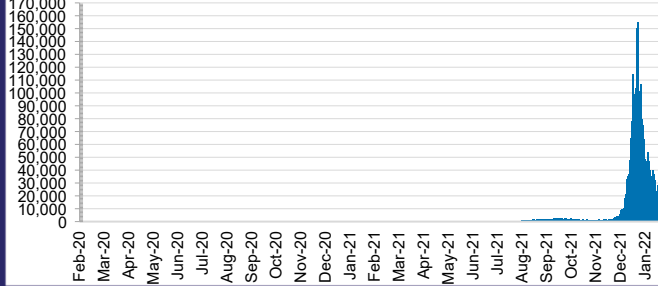




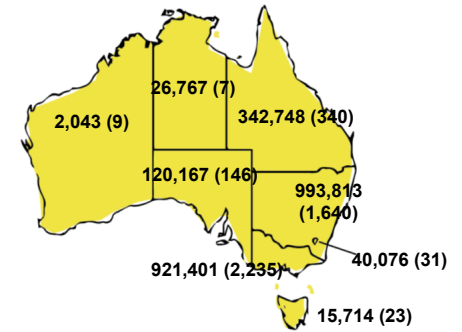
CURRENT STATUS OF CONFIRMED CASES



DAILY NUMBER OF REPORTED CASES



CASES (DEATHS) BY STATE AND TERRITORIES



267



ACT	NSW	NT	QLD	SA	TAS	VIC	WA
3	121	3	48	16	1	75	0

CASES IN AGED CARE SERVICES

Confirmed Cases	Australia	ACT	NSW	NT	QLD	SA	TAS	VIC	WA
Residential Care Recipients	16669 (1596)	120 (11)	6050 (422)	22 (2)	3126 (157)	1241 (94)	167 (6)	5943 (904)	0
In Home Care Recipients	205 (13)	0	45 (3)	0	15	1	5 (2)	138 (7)	1 (1)

Cases in care recipients (deaths)

3,414



ACT	NSW	NT	QLD	SA	TAS	VIC	WA
51	1,795	168	633	206	17	543	1

62,063,166

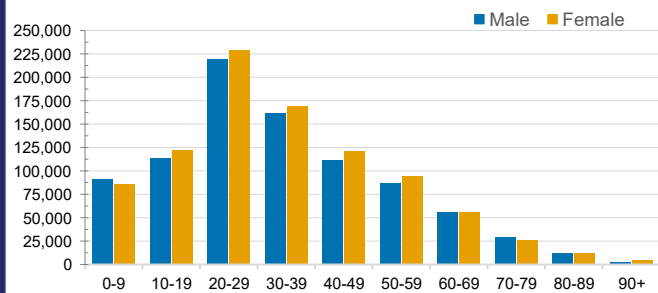


4.0% POSITIVE

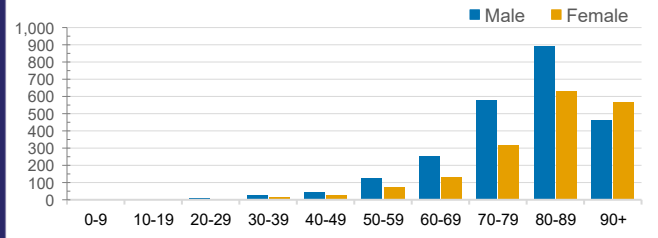
ACT	NSW	NT	QLD
868,799	28,108,892	685,702	6,659,396
POSITIVE	POSITIVE	POSITIVE	POSITIVE
4.6%	3.5%	3.9%	5.1%

SA	TAS	VIC	WA
3,689,100	538,390	19,151,446	2,361,441
POSITIVE	POSITIVE	POSITIVE	POSITIVE
3.3%	2.9%	4.8%	0.1%

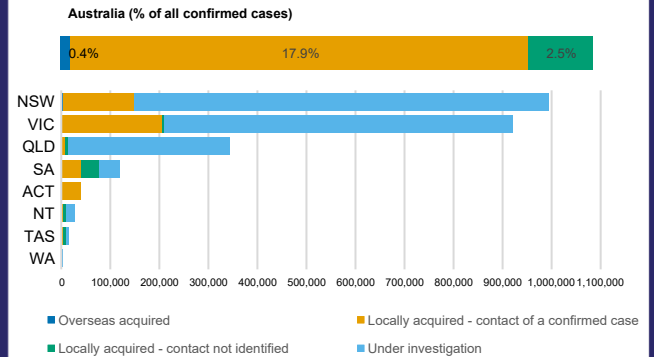
CASES BY AGE GROUP AND SEX



DEATHS BY AGE GROUP AND SEX



CASES BY SOURCE OF INFECTION



PUBLIC HEALTH RESPONSE MEASURE

