



CURRENT STATUS OF CONFIRMED CASES



375



ACT	NSW	NT	QLD	SA	TAS	VIC	WA
1	186	4	54	22	1	106	1



4,954

ACT	NSW	NT	QLD	SA	TAS	VIC	WA
64	2,749	132	868	273	16	851	1

61,151,036

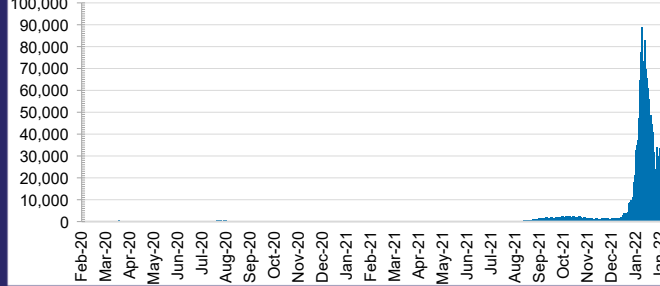


TOTAL TESTS CONDUCTED

3.6% POSITIVE

ACT	NSW	NT	QLD
853,693	27,785,428	660,779	6,513,321
POSITIVE	POSITIVE	POSITIVE	POSITIVE
3.3%	3.3%	2.6%	4.7%
SA	TAS	VIC	WA
3,608,004	525,704	18,931,880	2,272,227
POSITIVE	POSITIVE	POSITIVE	POSITIVE
3.0%	2.7%	4.4%	0.1%

DAILY NUMBER OF REPORTED CASES

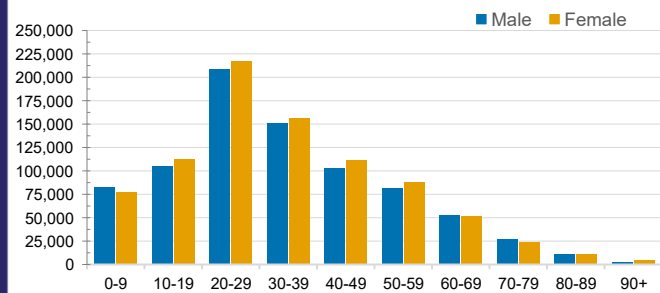


CASES IN AGED CARE SERVICES

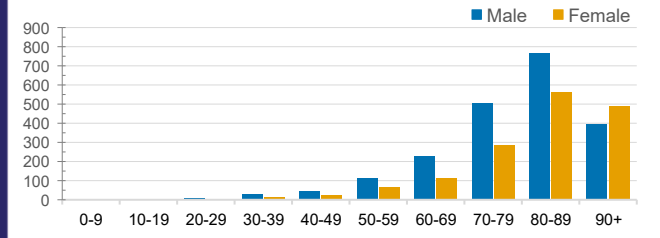
Confirmed Cases	Australia	ACT	NSW	NT	QLD	SA	TAS	VIC	WA
Residential Care Recipients	14857 (1438)	95 (8)	5642 (373)	22	2305 (108)	1119 (76)	140 (3)	5538 (870)	0
In Home Care Recipients	205 (13)	0	45 (3)	0	15	1	5 (2)	138 (7)	1 (1)

Cases in care recipients (deaths)

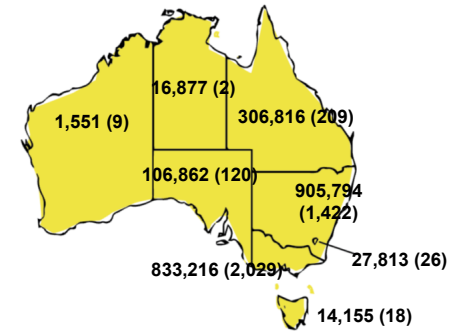
CASES BY AGE GROUP AND SEX



DEATHS BY AGE GROUP AND SEX

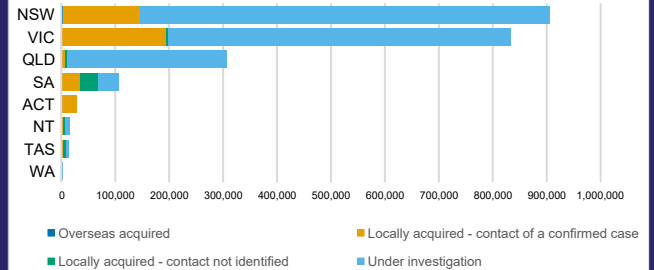


CASES (DEATHS) BY STATE AND TERRITORIES



CASES BY SOURCE OF INFECTION

Australia (% of all confirmed cases)



PUBLIC HEALTH RESPONSE MEASURE

Proportion of total cases under investigation

