



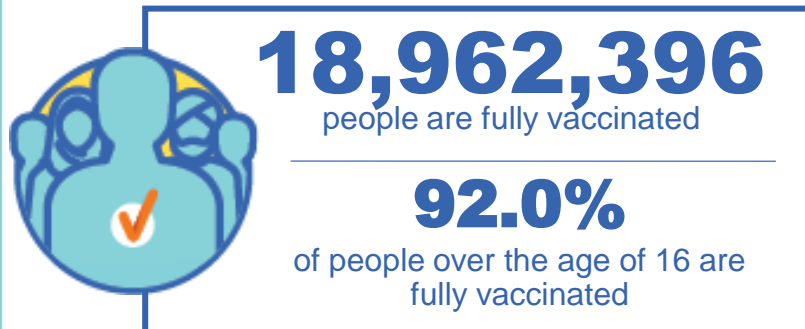
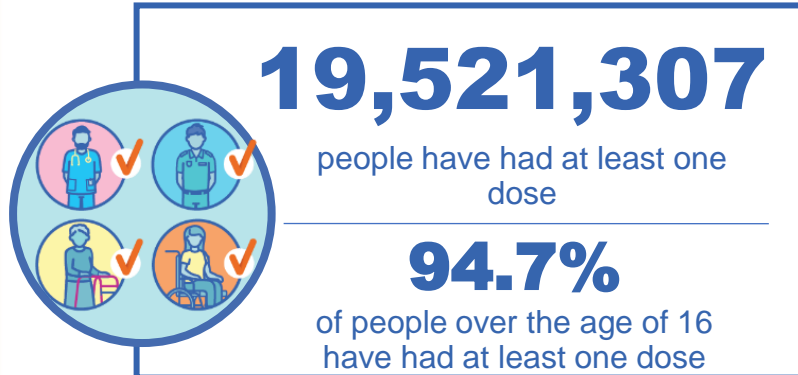
Australian Government
Operation COVID Shield

COVID-19 Vaccine Roll-out

08 January 2022

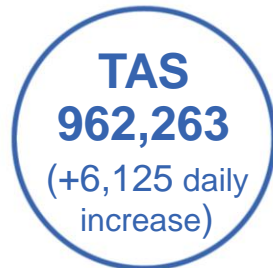
Data as at:
07 Jan 2022

Total vaccine doses



43,848,961 total vaccine
doses administered nationally as at 07 January

+269,306 recorded in the last 24 hours



*Administration state breakdown indicates state in which a vaccine was administered

**Overall dose count includes instances of more than two doses per person in a small number of cases.

Source: Australian Immunisation Register

Data as at:
07 Jan 2022

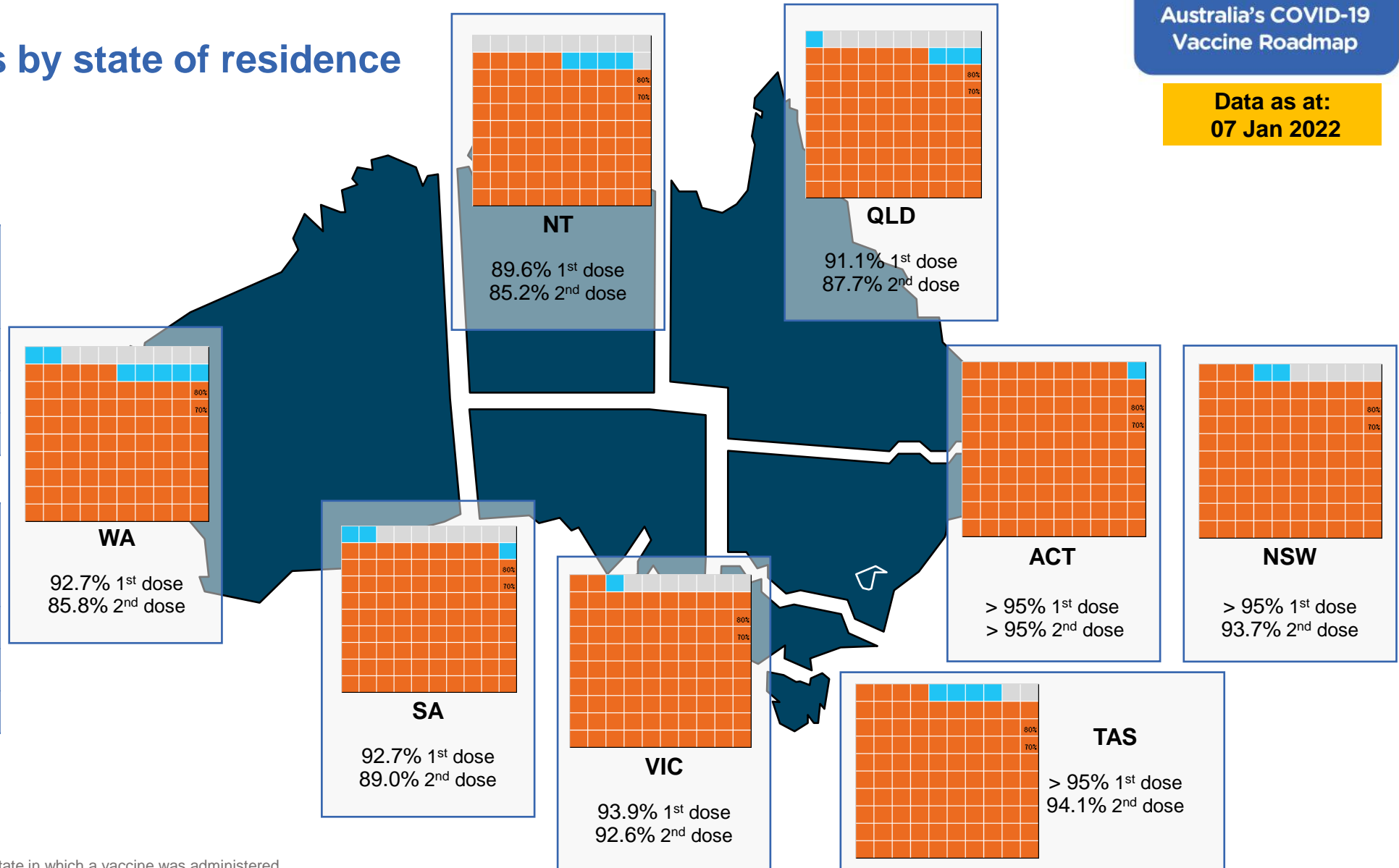
Vaccinations by state of residence

First doses

Age	Today	4 weeks ago	8 weeks ago
16+	94.7%	93.5%	90.7%
50+	>95%	>95%	>95%
70+	>95%	>95%	>95%

Fully vaccinated

Age	Today	4 weeks ago	8 weeks ago
16+	92.0%	89.5%	83.4%
50+	>95%	>95%	91.3%
70+	>95%	>95%	>95%



*Residential state may differ from the state in which a vaccine was administered

Commonwealth and Jurisdiction vaccine doses administered

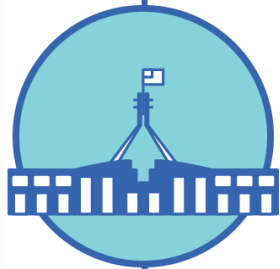
Data as at:
07 Jan 2022



43,848,961 total vaccine
doses administered nationally as at 07 January
+ 269,306 recorded in the last 24 hours



17,408,890
doses administered by state
and territory facilities
+ 85,070
recorded in the last 24 hours



26,440,071
doses administered by
commonwealth facilities
+ 184,236
recorded in the last 24 hours
25,265,907 total vaccine doses
administered in primary care settings
1,174,164 total vaccine doses
administered in aged care and disability
settings

NSW	Jurisdictions	Commonwealth
Cumulative	4,487,015	9,553,830
Daily increase	19,274	56,248

VIC	Jurisdictions	Commonwealth
Cumulative	5,019,561	6,567,341
Daily increase	20,421	40,823

QLD	Jurisdictions	Commonwealth
Cumulative	3,317,706	5,182,641
Daily increase	17,453	42,125

WA	Jurisdictions	Commonwealth
Cumulative	1,894,200	2,383,121
Daily increase	12,272	25,421

TAS	Jurisdictions	Commonwealth
Cumulative	498,002	464,261
Daily increase	2,291	3,834

SA	Jurisdictions	Commonwealth
Cumulative	1,395,077	1,588,498
Daily increase	8,615	11,325

ACT	Jurisdictions	Commonwealth
Cumulative	544,431	521,278
Daily increase	2,950	3,122

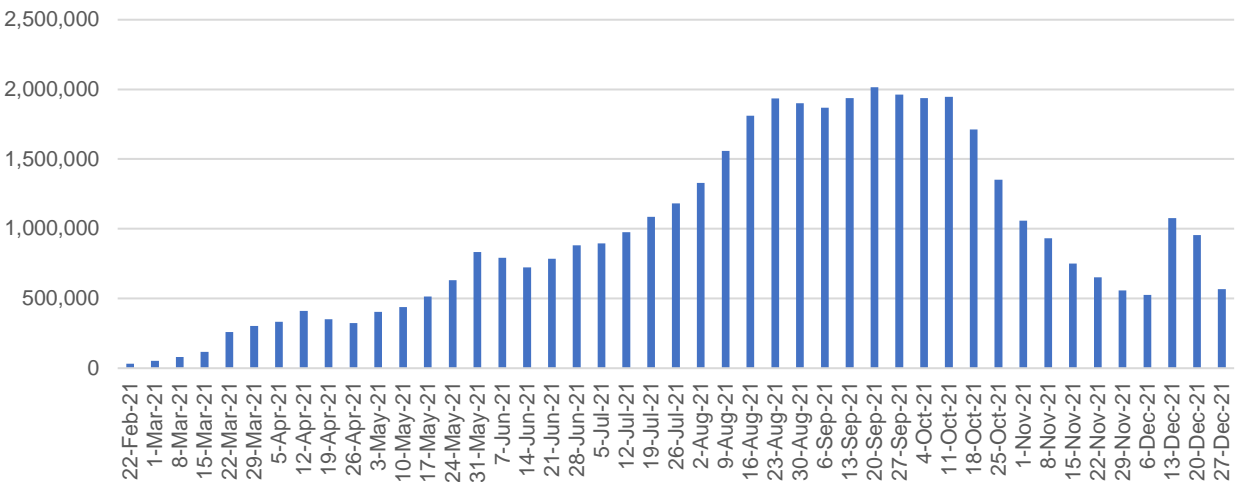
NT	Jurisdictions	Commonwealth
Cumulative	252,898	179,101
Daily increase	1,794	1,338

Vaccine milestone charts

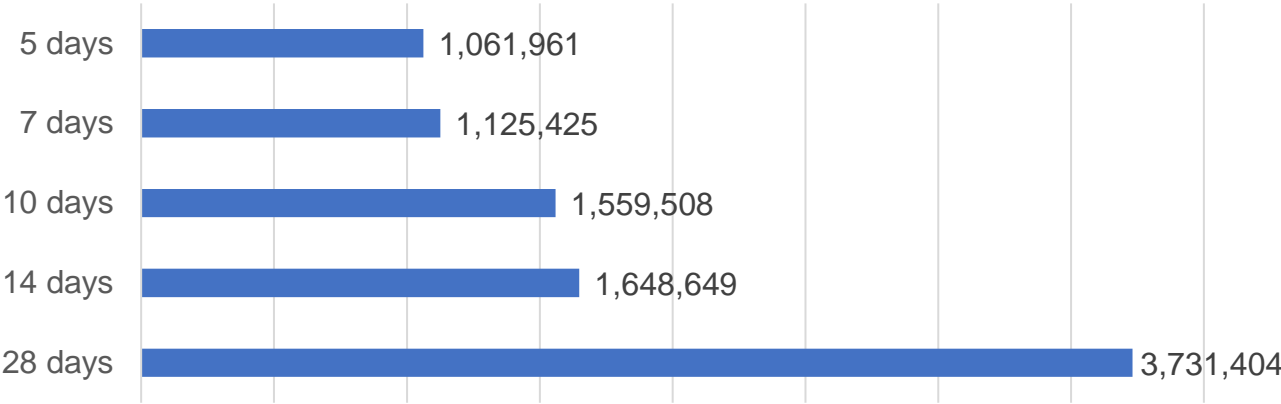
Data as at:
07 Jan 2022

Australia's COVID-19
Vaccine Roadmap

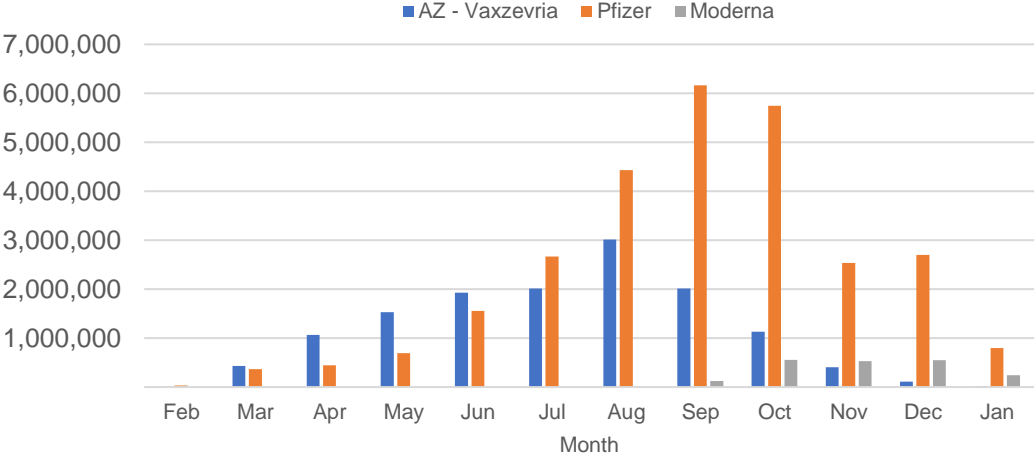
Doses Administered by Week



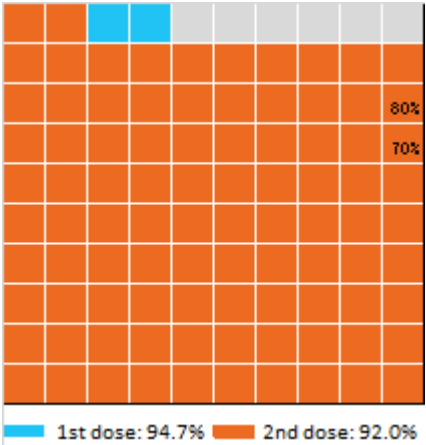
Doses Reported



Doses by administration month and vaccine type



Eligible population percentage coverage



*Each square represents 1% of the national population. Squares are filled as milestones are achieved.

*Sourced from the Australian Immunisation Register.

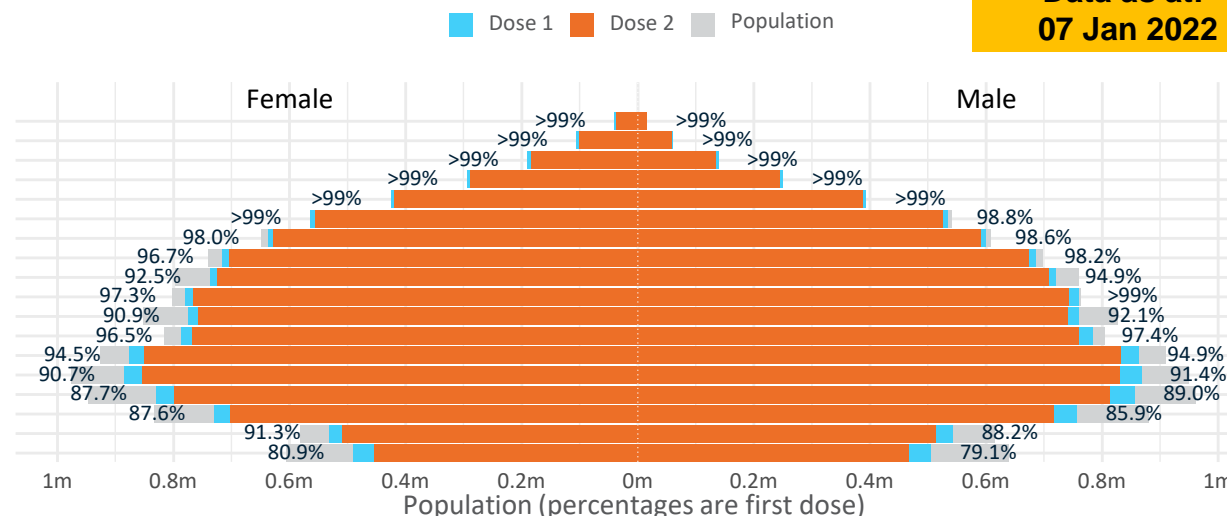
Doses by age and sex

First and second doses by age and sex

Australia's COVID-19
Vaccine Roadmap

Data as at:
07 Jan 2022

Age	Dose 1	Dose 2
95+	55,125 (>99%)	51,349 (97.0%)
90-94	166,010 (>99%)	158,802 (>99%)
85-89	328,214 (>99%)	318,283 (>99%)
80-84	544,514 (>99%)	533,325 (>99%)
75-79	819,100 (>99%)	806,436 (>99%)
70-74	1,098,799 (>99%)	1,083,099 (98.0%)
65-69	1,238,131 (98.4%)	1,219,181 (96.9%)
60-64	1,401,326 (97.5%)	1,378,027 (95.9%)
55-59	1,458,581 (93.8%)	1,433,010 (92.1%)
50-54	1,539,912 (98.4%)	1,509,095 (96.5%)
45-49	1,535,830 (91.6%)	1,500,533 (89.5%)
40-44	1,572,681 (97.1%)	1,529,729 (94.4%)
35-39	1,742,631 (95.0%)	1,686,342 (91.9%)
30-34	1,759,662 (91.5%)	1,690,484 (87.9%)
25-29	1,695,573 (88.9%)	1,619,817 (85.0%)
20-24	1,491,389 (87.1%)	1,423,159 (83.1%)
16-19	1,073,829 (89.8%)	1,021,725 (85.4%)
12-15	995,316 (80.0%)	919,969 (74.0%)



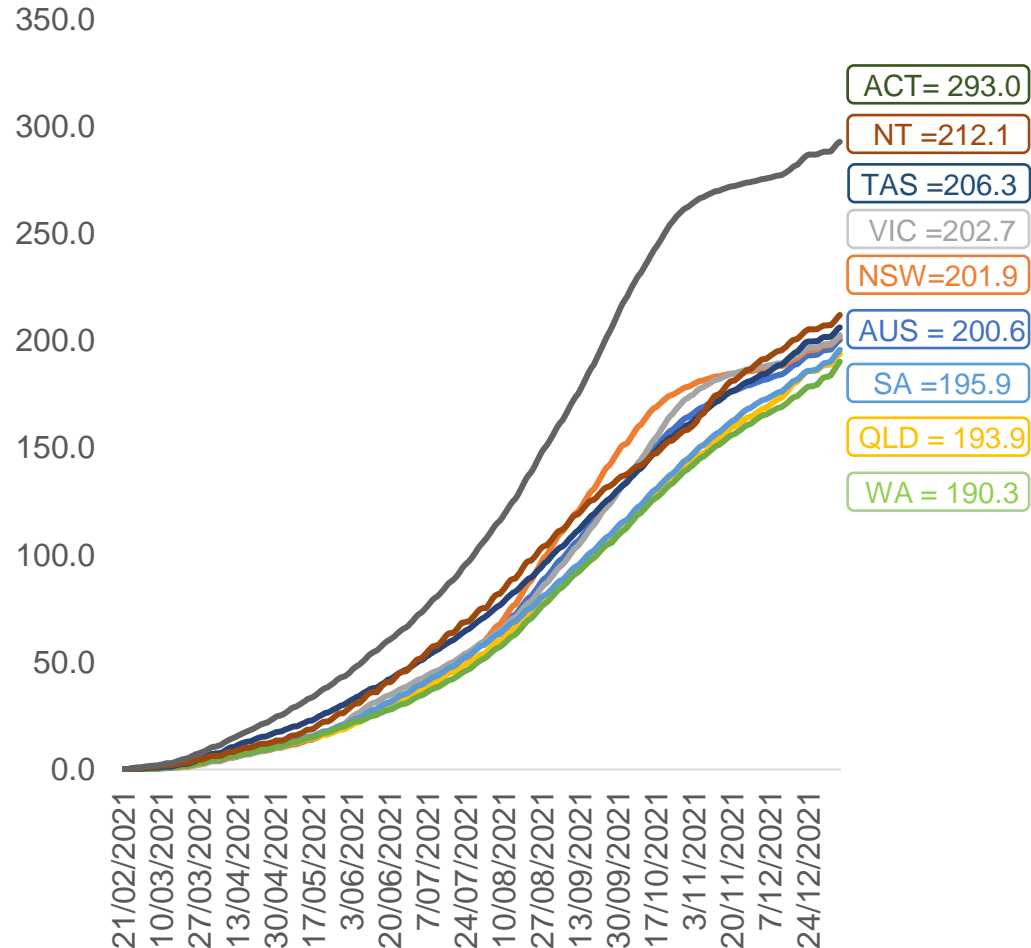
	AUS	ACT	NSW	NT	QLD	SA	TAS	VIC	WA
16 and over - dose 1	19,521,307	347,462	6,243,003	170,661	3,746,841	1,335,027	432,039	5,079,108	1,961,311
16 and over - dose 2	18,962,396	342,735	6,150,887	162,371	3,605,578	1,281,396	414,400	5,005,811	1,814,177
16 and over - population	20,619,959*	344,037	6,565,651	190,571	4,112,707	1,440,400	440,172	5,407,574	2,114,978
16 and over % with dose 1	94.67%	>99%	95.09%	89.55%	91.10%	92.68%	98.15%	93.93%	92.73%
16 and over % with dose 2	91.96%	>99%	93.68%	85.20%	87.67%	88.96%	94.15%	92.57%	85.78%
50 and over - dose 1	8,649,712	134,627	2,786,031	56,891	1,695,954	655,700	216,227	2,186,035	861,199
50 and over - dose 2	8,490,607	133,101	2,753,703	55,316	1,659,150	639,207	211,231	2,159,646	827,494
50 and over - population	8,749,703	127,802	2,807,793	62,280	1,758,855	674,384	220,036	2,211,211	885,370
50 and over % with dose 1	98.86%	>99%	>99%	91.35%	96.42%	97.23%	98.27%	98.86%	97.27%
50 and over % with dose 2	97.04%	>99%	98.07%	88.82%	94.33%	94.78%	96.00%	97.67%	93.46%
70 and over - dose 1	3,011,762	44,017	987,734	11,750	582,140	245,408	79,414	756,512	282,983
70 and over - dose 2	2,951,294	43,382	973,069	11,385	569,395	238,880	77,401	744,770	273,462
70 and over - population	2,934,706	39,946	962,606	12,343	577,767	240,514	77,155	743,519	280,281
70 and over % with dose 1	>99%	>99%	>99%	95.20%	>99%	>99%	>99%	>99%	>99%
70 and over % with dose 2	>99%	>99%	>99%	92.24%	98.55%	>99%	>99%	>99%	97.57%
12 to 15 - dose 1	995,316	19,713	318,213	10,084	192,014	63,217	20,914	270,912	92,649
12 to 15 - dose 2	919,969	19,118	304,965	8,798	172,910	56,471	18,952	258,738	73,655
12 to 15 - population	1,243,990	19,693	390,330	13,060	270,146	82,747	26,308	308,611	132,869
12 to 15 % with dose 1	80.01%	>99%	81.52%	77.21%	71.08%	76.40%	79.50%	87.78%	69.73%
12 to 15 % with dose 2	73.95%	97.08%	78.13%	67.37%	64.01%	68.25%	72.04%	83.84%	55.43%

*National population will not equal sum of listed jurisdictions due to a small number of people counted in national population residing in some 'other' territories. Sum of state doses will not add to national total as some records are unable to be geocoded to a State or Territory.

Doses sourced from Australian Immunisation Register, population from ABS ERP June 2020

Vaccinations by location

Cumulative total doses administered vs eligible state populations*

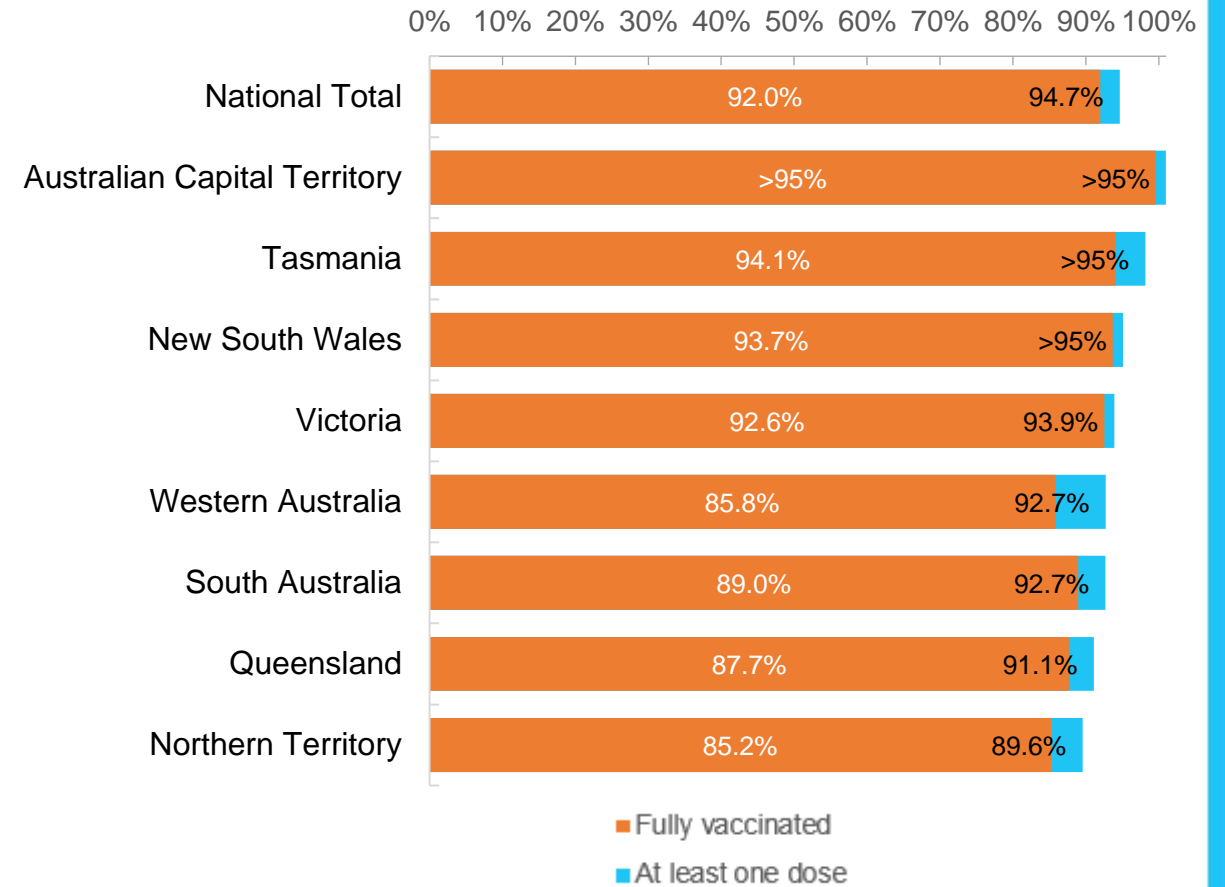


*Not an indication of percentage vaccinated, numbers will exceed 100 due to multiple doses required per person of the population. All doses are included, including those for the 12-15 cohort, and are based on vaccination provider location.

Data as at:
07 Jan 2022

Australia's COVID-19
Vaccine Roadmap

First and Second Doses by state of residence



Aboriginal and Torres Strait Islander peoples

Number of people vaccinated

Data as at:
04 Jan 2022
Updated weekly

Australia's COVID-19
Vaccine Roadmap



416,820

people over the age of 16
have had at least one dose

79.2%

of people over the age of 16
have had at least one dose



377,876

people over the age of 16
are fully vaccinated

71.8%

of people over the age of 16 are
fully vaccinated



**42,670
(59.9%)**

people aged 12-15 years
have had at least one dose

173 Aboriginal community controlled health services (ACCHS)

0#	50	27	41	12	3	21	19
ACT	NSW	NT	QLD	SA	TAS	VIC	WA

Medicare Address State ^{##}	Individuals Dose 1	Individuals Dose 1 %	Individuals Dose 2	Individuals Dose 2 %
Australian Capital Territory	4,936	90.8%	4,786	88.0%
New South Wales	137,410	86.2%	133,442	83.7%
Northern Territory	39,736	84.5%	34,873	74.1%
Queensland	108,816	76.0%	95,784	66.9%
South Australia	18,762	73.9%	16,409	64.6%
Tasmania	14,411	85.2%	13,385	79.1%
Victoria	35,671	88.6%	34,513	85.7%
Western Australia	42,976	67.5%	33,545	52.7%
Unknown/Other Territories	14,102	56.4%	11,139	44.5%
Totals	416,820	79.2%	377,876	71.8%

Source: Australian Immunisation Register

*Identifying as Aboriginal and Torres Strait Islander is optional and the estimated population may be under reported.

**Includes all Aboriginal and Torres Strait Islander peoples who have received a vaccination, not limited to those administered in an ACCHS setting

#ACCHS in the ACT are currently operating as a Commonwealth Vaccine Clinics so not included to avoid double counting

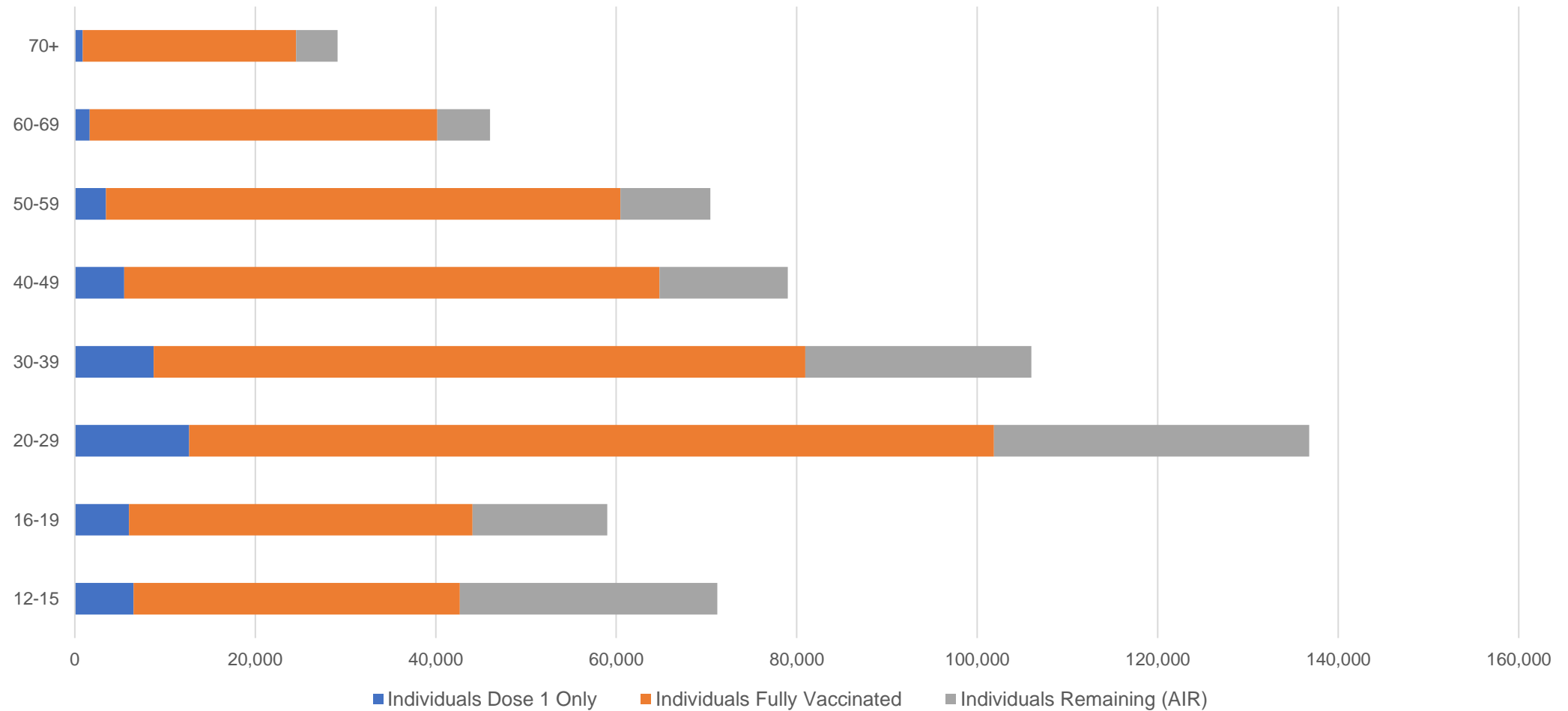
##The above table includes all identified Aboriginal and Torres Strait Islander people who are aged 16 and above by their state of residence.

Aboriginal and Torres Strait Islander peoples

Number of people vaccinated by age

Data as at:
04 Jan 2022
Updated weekly

Australia's COVID-19
Vaccine Roadmap



Source: Australian Immunisation Register

Data as at:
07 Jan 2022

Commonwealth primary care



Primary care vaccine administration sites

5,674	137	173	3,472
GPs	CVCs	ACCHS	Pharmacies



25,265,907 total vaccine doses administered
primary care settings as at 07 January
+ 183,682 recorded in the last 24 hours

Primary care vaccinations by provider type

	Doses administered	Daily increase	7 day increase
General Practice* includes other Commonwealth	21,707,787	108,071	416,163
Pharmacy	3,558,120	75,611	334,399

NSW
9,039,580
(+55,955 daily increase)

VIC
6,306,066
(+40,746 daily increase)

QLD
4,942,145
(+41,767 daily increase)

WA
2,280,827
(+25,282 daily increase)

TAS
448,728
(+3,657 daily increase)

SA
1,518,398
(+11,425 daily increase)

ACT
394,722
(+2,992 daily increase)

NT
159,563
(+1,343 daily increase)

175,878 doses administered to persons
residing in other territories or with
missing residential information

*General practice includes Commonwealth Vaccination Clinics, Aboriginal Community Health Centres, Royal Flying Doctor Service and other Commonwealth vaccination facilities

Source: Australian Immunisation Register

Data as at:
07 Jan 2022

Commonwealth aged care and disability doses administered



1,174,164 (+ 554 last 24 hours)

Total vaccine doses administered in aged care and disability facilities as at 07 January

Number of doses administered as part of the Commonwealth aged and disability care rollout

NSW
537,805
(+180 daily increase)

VIC
218,632
(+244 daily increase)

QLD
183,549
(+108 daily increase)

WA
84,703
(+37 daily increase)

TAS
21,106
(+4 daily increase)

SA
78,161
(+0 daily increase)

ACT
15,359
(+0 daily increase)

NT
6,643
(-2[#] daily increase)

28,206

doses administered to persons residing in other territories or with missing residential information

Source: Australian Immunisation Register

*Sourced from the Australian Immunisation Register. Includes all persons vaccinated at participating residential aged care, disability and related industry settings.

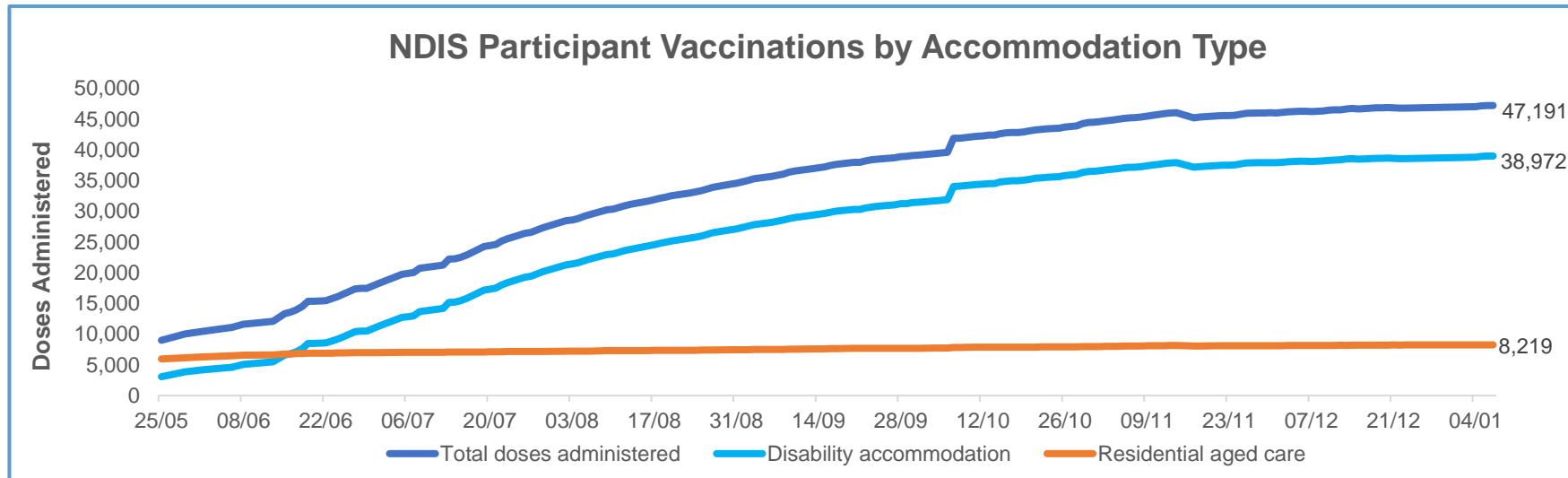
**State level breakdown indicates the residential location and may not align to the state in which the vaccination occurred.

Numbers are calculated as difference in daily cumulative reported numbers to allow for historical corrections in all data sources. This can occasionally result in negative numbers, such as for QLD, TAS and NT, where historical details about doses have been updated.

Data as at:
7 Jan 2022*

Vaccination rate of people with disability and the disability workforce

Phase 1a – People with disability living in shared accommodation



	Total people with at least one dose	People fully vaccinated	Total number of individuals in cohort	Total doses administered	% People with at least one dose	% People fully vaccinated
NDIS participants living in shared accommodation **	23,934	23,257	27,603	47,191	86.7%	84.3%
NDIS screened workers ***	237,431	232,445	267,670	469,876	88.7%	86.8%



* Updates are available Monday to Friday on participants, and bi-weekly for workers, numbers may be up to four days old.

** Shared accommodation means two or more people with disability living in shared residential accommodation and NDIS participants living in Residential Aged Care accommodation as per the eligibility criteria of Phase 1a. The number of residents changes over time and refinement of methodology can lead to corrections in totals.

*** Total number of workers within the NDIS Commission Worker Screening database who have ever been successfully screened and linked to an NDIS registered provider or participant.

Source: Linkage between National Disability Insurance Agency data, NDIS Quality and Safeguards Commission data and the Australian Immunisation Register.

Residential aged care vaccination rollout

Residential aged care facilities status

100% Commonwealth facilities visited (2,590 planned sites)

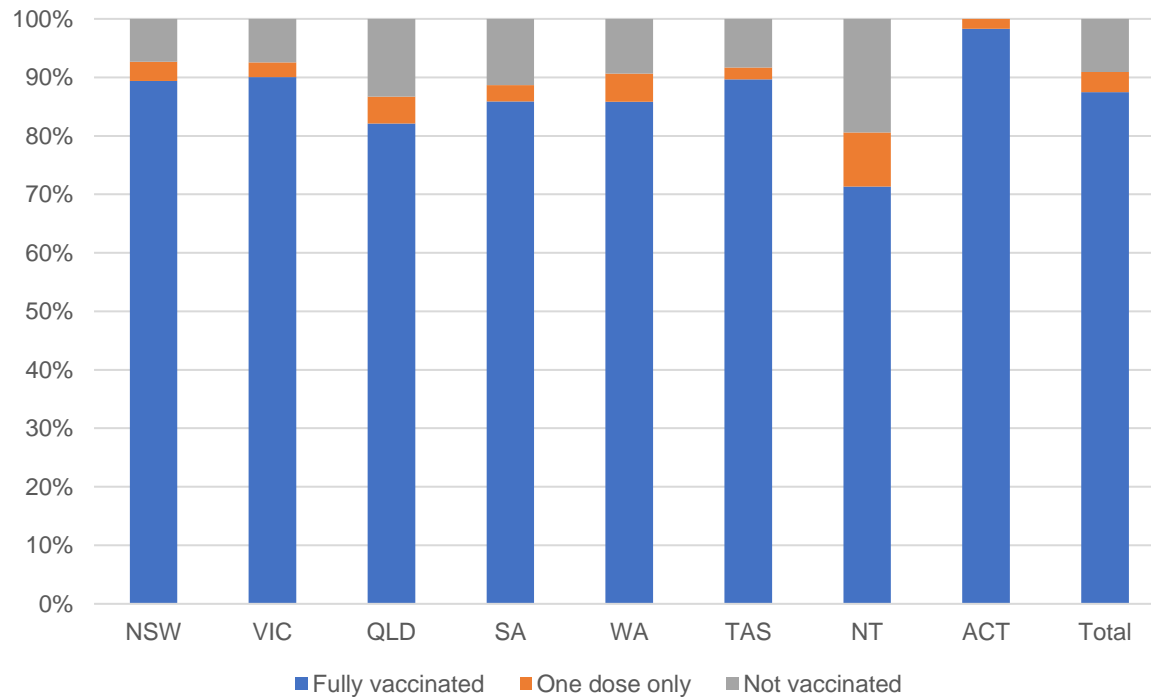
163,182 People fully vaccinated

169,629 People with at least one dose

Australia's COVID-19 Vaccine Roadmap

Data as at:
06 Jan 2022

Aged care resident vaccinations



Aged care worker vaccinations

Jurisdictions	Total workers with at least one dose	Workers fully vaccinated	% Workers with at least one dose	% Workers fully vaccinated
NSW	79,005	78,966	99.3%	99.2%
VIC	71,148	71,148	99.4%	99.4%
QLD	48,838	48,817	100.0%	99.9%
SA	27,575	27,505	99.6%	99.4%
WA	23,753	23,676	100.0%	99.7%
TAS	7,580	7,537	100.0%	99.4%
NT	851	850	100.0%	99.9%
ACT	2,869	2,869	95.9%	95.9%
Total	261,619	261,368	99.5%	99.4%

Source: My Aged Care Portal staff vaccination progress

**Resident vaccination information is reported manually by service providers

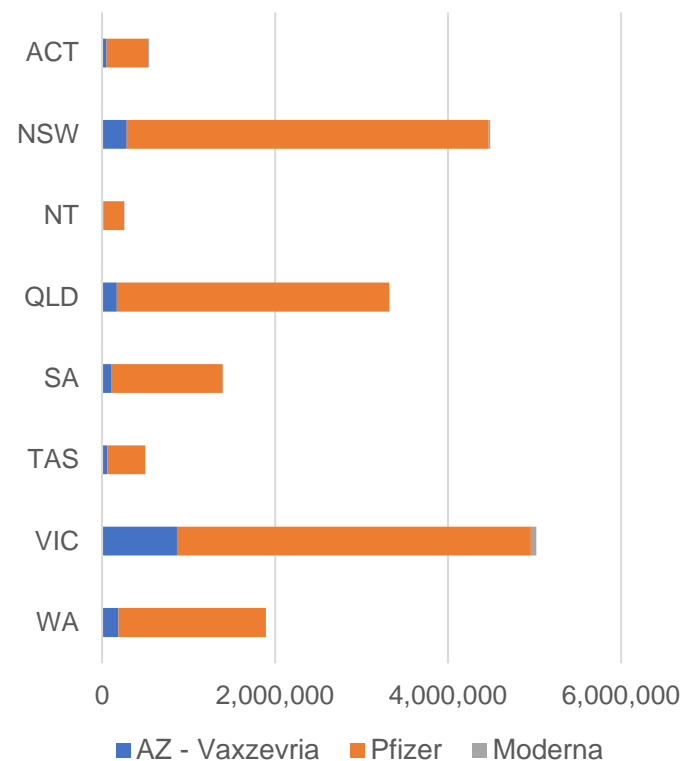
*Status updates are provided by facilities at least once per week. Reporting is updated Monday to Friday to encompass different facility updates being made on different days.

Data is sourced directly from Aged Care Service Providers and is not drawn or closely aligned with data from AIR due to inconsistencies and potential lags in uploading of records.

Data as at:
07 Jan 2022

Jurisdiction administered

Total vaccine doses administered in State and Territory clinics as at 07 January



17,408,890 total vaccine doses administered
in State and Territory clinics as at 07 January
+ 85,070 recorded in the last 24 hours
+ 373,997 recorded in the last 7 days

NSW
4,487,015
(+19,274 daily increase)

VIC
5,019,561
(+20,421 daily increase)

QLD
3,317,706
(+17,453 daily increase)

WA
1,894,200
(+12,272 daily increase)

TAS
498,002
(+2,291 daily increase)

SA
1,395,077
(+8,615 daily increase)

ACT
544,431
(+2,950 daily increase)

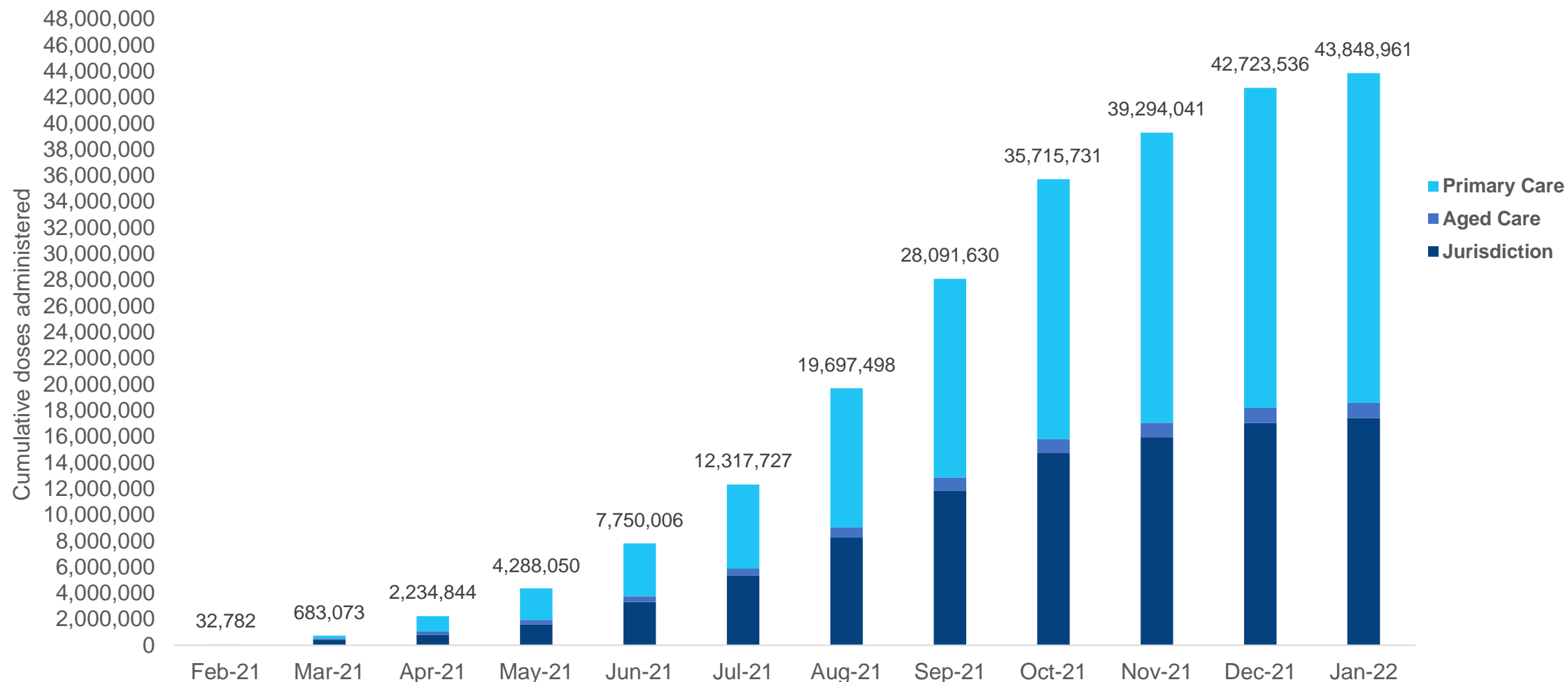
NT
252,898
(+1,794 daily increase)

*Sourced from the Australian Immunisation Register and self-reported data. Numbers are calculated as difference in daily cumulative reported numbers to allow for historical corrections in all self-reported data sources.

Source: Australian Immunisation Register

Cumulative doses administered by channel

Data as at:
07 Jan 2022



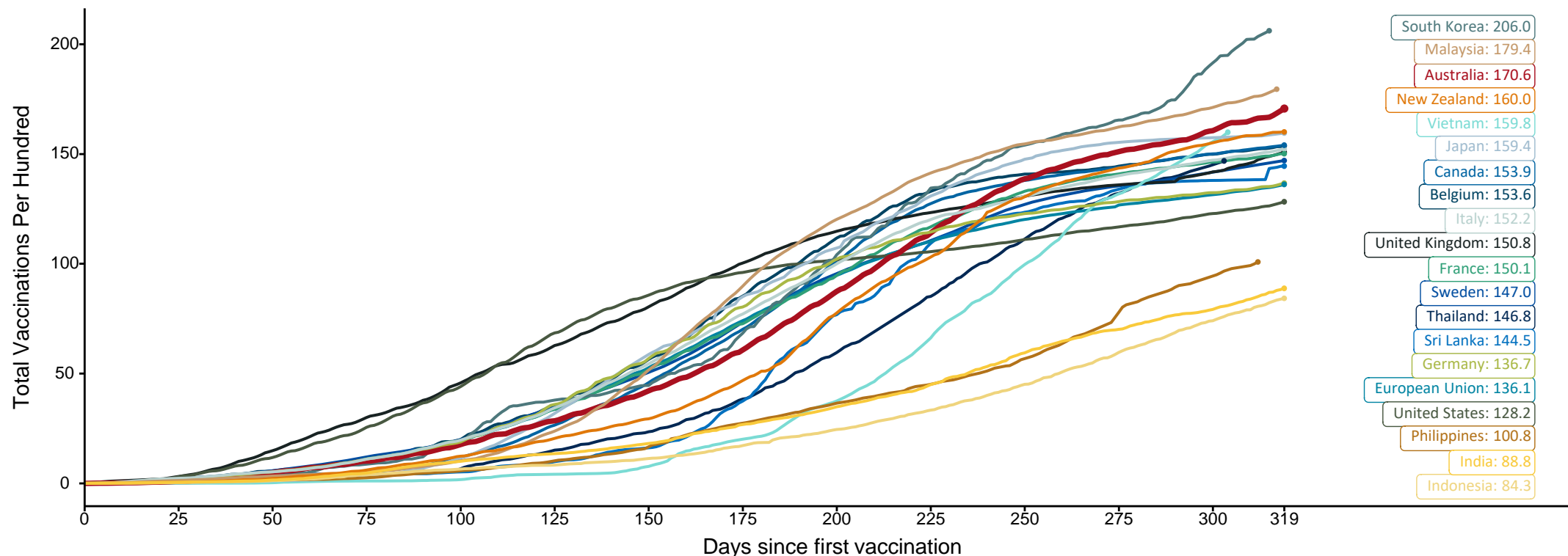
Source: Australian Immunisation Register

Doses at equivalent stages of rollout (Day 319)

Data as at:
07 Jan 2022

The x-axis is truncated at the length of Australia's vaccination program. Countries with intermittent reporting have had their doses per 100 imputed to Australia's current stage of rollout. Israel excluded as it is beyond scale of the graph

Cumulative doses administered (07 Jan): **43,848,961**

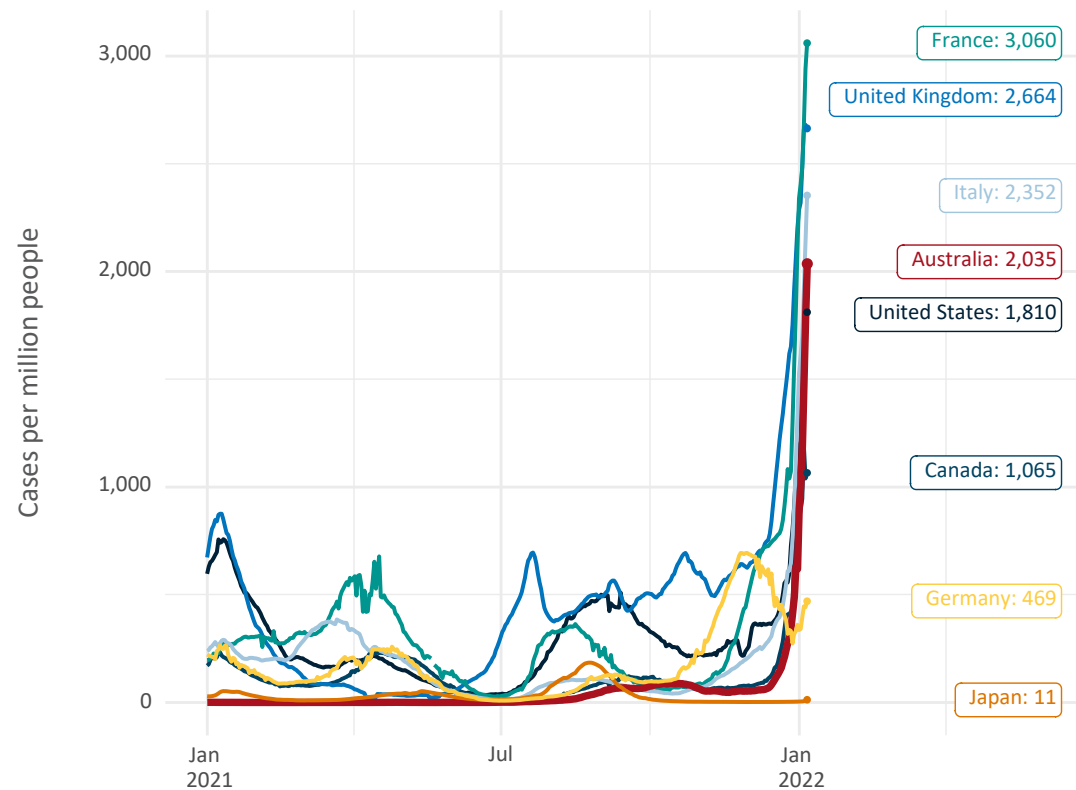


Note: From 15 September 2021, data for Australia includes all doses administered to people 12 and over. Prior to 15 September, data was for 16 and over
Due to data revisions, Singapore has been removed from the chart
Source: Department of Health (Australia), Our World in Data (international)
Latest data: 07 January

Data as at:
07 Jan 2022

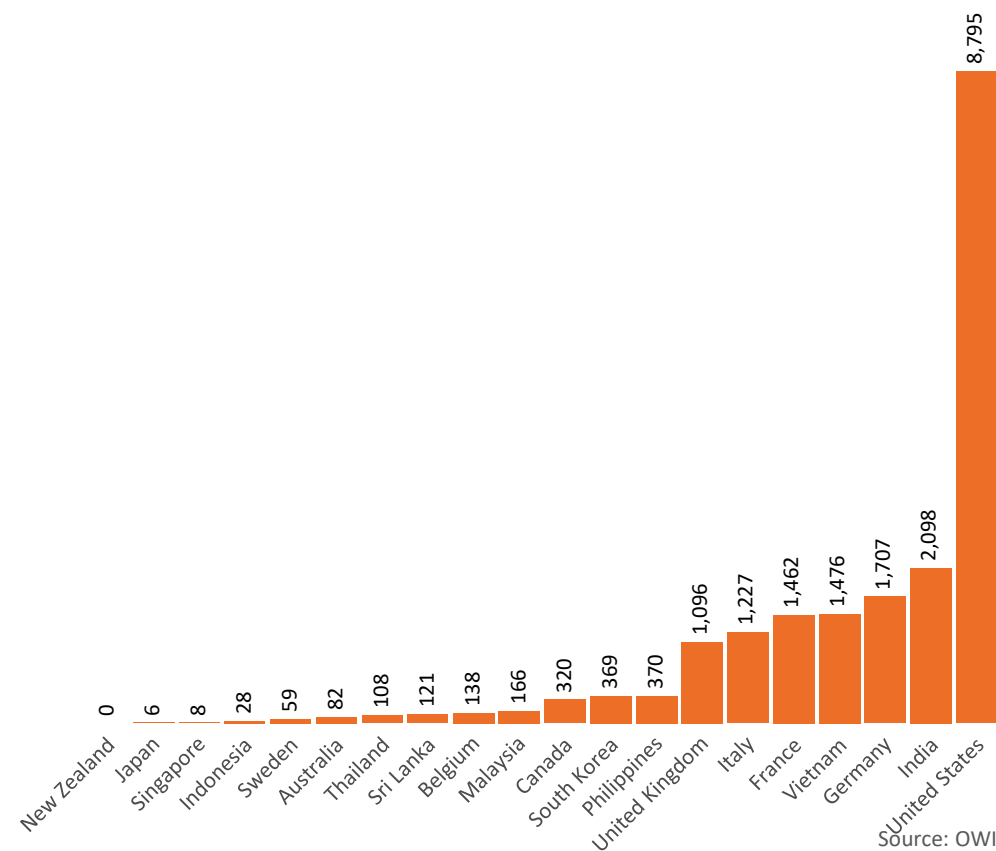
International data – COVID-19

New daily cases per million in 2021, Australia and G7 countries
Smoothed - 7 day average



Source: OWID
Data downloaded: 08 Jan 2022 09:33
Latest data: 06 Jan 2022

COVID-19 deaths in past 7 days - Australia and select countries

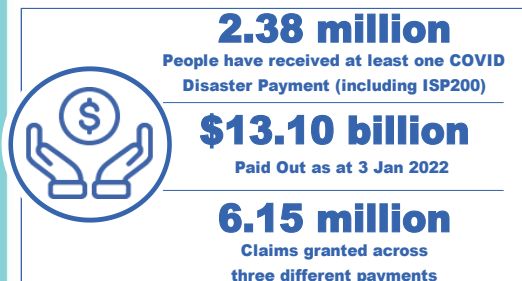


Source: OWID
Data downloaded: 08 Jan 2022 09:33
Latest data: 06 Jan 2022

Pandemic Response Payments

Australia's COVID-19
Vaccine Roadmap

Data as at midnight:
3 Jan 2022



COVID Disaster Payment:	5.89 million claims received - 2.19 million individuals paid a total of \$12.59 billion.
\$200 Income Support Payment:	353,000 claims received - 183,000 individuals paid a total of \$268.91 million.
Pandemic Leave Disaster Payment:	197,000 claims received - 151,000 individuals paid a total of \$236.33 million.



COVID Disaster Payment

assisting during a lockdown
event in a Commonwealth
hotspot.

Income Support Payment \$200

for income support
recipients who lost at
least 8 hours of work.

Pandemic Leave Disaster Payment

for those who have to
self-isolate, quarantine
or care.

For more information visit:
servicesaustralia.gov.au

COVID-19 DISASTER PAYMENTS

Victoria

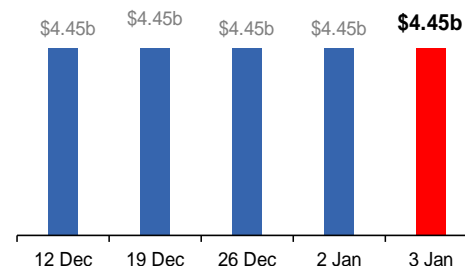
Lockdown (#6) from 6 Aug to 28 Oct
Claiming period ended 9 Dec

**745,000 people have received at least
one COVID Disaster Payment.**

\$4.45b paid out as at 3 Jan 2022.

**\$6,000 paid in initial and reoccurring
payments in the week ending
2 Jan 2022.**

Cumulative payments made by State since
activation on 8 Jun 2021.



Northern Territory

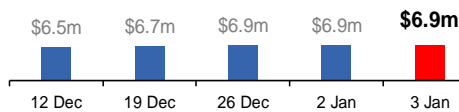
Lockdown (#3) from 16 Nov to 22 Nov
Claiming period ends 27 Dec

**7,500 people have received at least one
COVID Disaster Payment.**

\$6.9m paid out as at 3 Jan 2022.

**\$39,000 paid in initial payments in the
week ending 2 Jan 2022.**

Cumulative payments made by Territory since
activation on 25 Aug 2021.



New South Wales

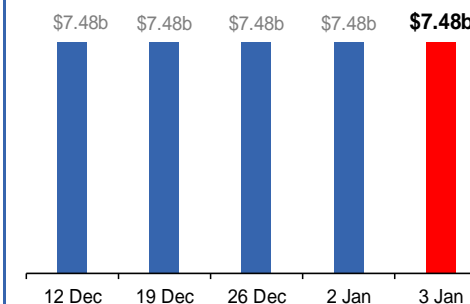
Lockdown from 24 Jun to 10 Oct
Claiming period ended 27 Nov

**1.08m people have received at least
one COVID Disaster Payment.**

\$7.48b paid out as at 3 Jan 2022.

**\$2,000 paid in initial and reoccurring
payments in the week ending
2 Jan 2022.**

Cumulative payments made by State since
activation on 1 Jul 2021.



Australian Capital Territory

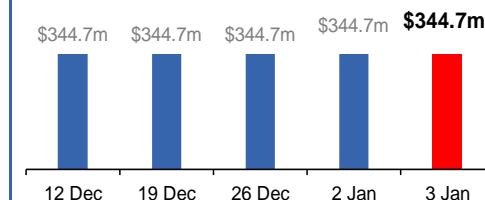
Lockdown from 12 Aug to 14 Oct
Claiming period ended 25 Nov

**65,000 people have received at least
one COVID Disaster Payment.**

\$344.7m paid out as at 3 Jan 2022.

**\$0 paid in initial and reoccurring
payments in the week ending
2 Jan 2022.**

Cumulative payments made by Territory since
activation on 20 Aug 2021.



Data as at midnight:
3 Jan 2022

Pandemic Response Payments (continued)

COVID-19 DISASTER PAYMENTS


Tasmania

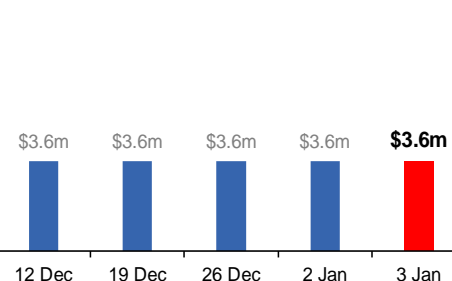
Lockdown from 15 Oct to 18 Oct
Claiming period ended 12 Nov

6,900 people have received at least one COVID Disaster Payment.

\$3.6m paid out as at 3 Jan 2022.

\$0 paid in initial and reoccurring payments in the week ending 2 Jan 2022.

 Cumulative payments made by State since activation on 22 Oct 2021.




Queensland

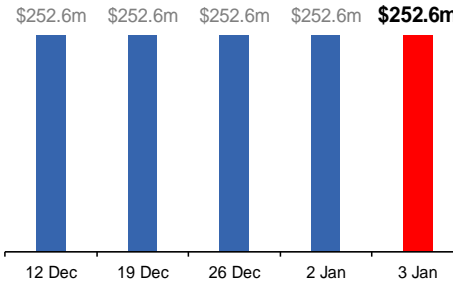
Lockdown from 31 Jul to 11 Aug
Claiming period ended 28 Aug

196,000 people have received at least one COVID Disaster Payment.

\$252.6m paid out as at 3 Jan 2022.

\$0 paid in initial and reoccurring payments in the week ending 2 Jan 2022.

 Cumulative payments made by State since activation on 7 Aug 2021.




South Australia

Lockdown from 21 to 27 Jul
Claiming period ended 17 Aug

86,000 people have received at least one COVID Disaster Payment.

\$48.2m paid out as at 3 Jan 2022.

\$0 paid in initial and reoccurring payments in the week ending 2 Jan 2022.

 Cumulative payments made by State since activation on 28 Jul 2021.

