



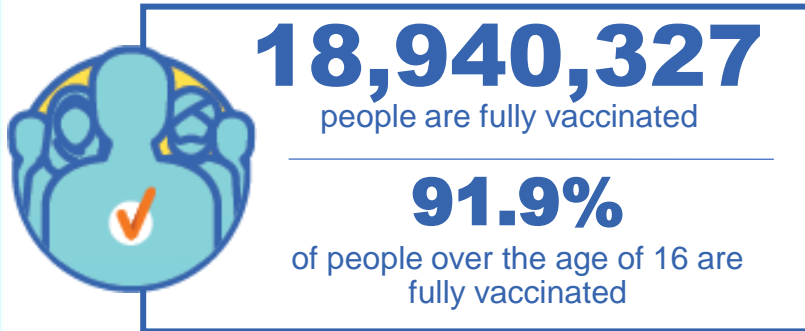
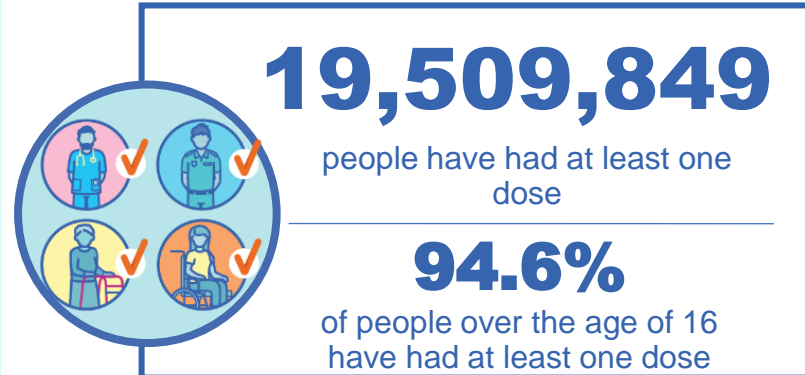
Australian Government
Operation COVID Shield

COVID-19 Vaccine Roll-out

07 January 2022

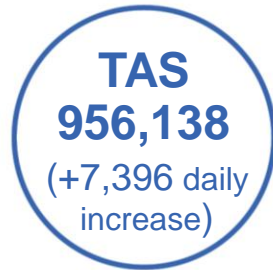
Data as at:
06 Jan 2022

Total vaccine doses



43,579,655 total vaccine doses administered nationally as at 06 January

+273,272 recorded in the last 24 hours



*Administration state breakdown indicates state in which a vaccine was administered
**Overall dose count includes instances of more than two doses per person in a small number of cases.

Source: Australian Immunisation Register

Data as at:
06 Jan 2022

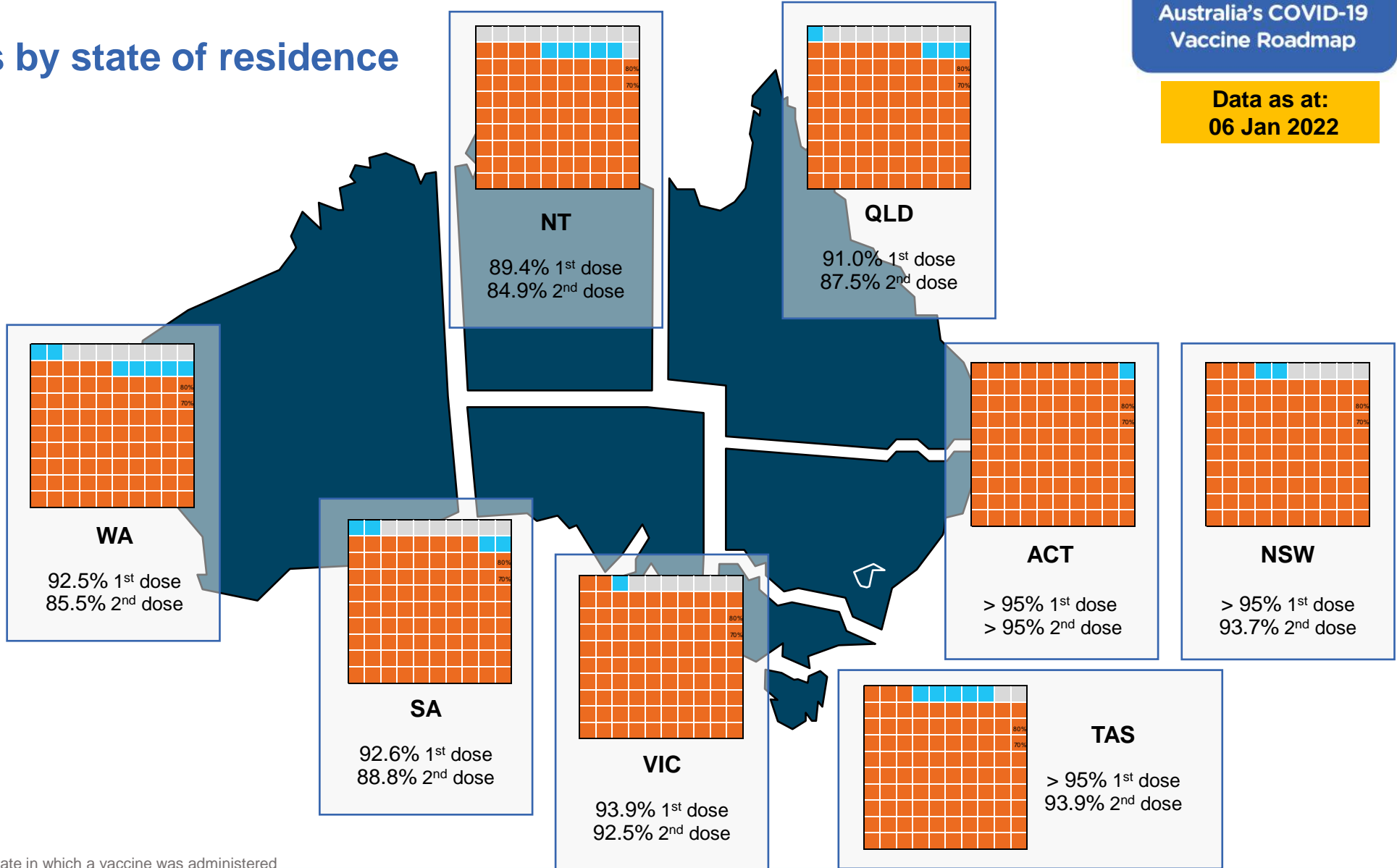
Vaccinations by state of residence

First doses

Age	Today	4 weeks ago	8 weeks ago
16+	94.6%	93.4%	90.5%
50+	>95%	>95%	>95%
70+	>95%	>95%	>95%

Fully vaccinated

Age	Today	4 weeks ago	8 weeks ago
16+	91.9%	89.3%	83.0%
50+	>95%	>95%	91.0%
70+	>95%	>95%	>95%



*Residential state may differ from the state in which a vaccine was administered

Commonwealth and Jurisdiction vaccine doses administered

Data as at:
06 Jan 2022



43,579,655 total vaccine doses administered nationally as at 06 January
+ **273,272** recorded in the last 24 hours

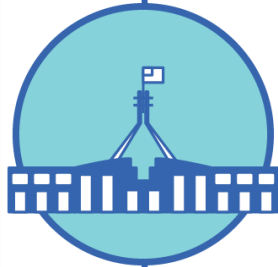


17,323,820

doses administered by state and territory facilities

+ **85,757**

recorded in the last 24 hours



26,255,835

doses administered by commonwealth facilities

+ **187,515**

recorded in the last 24 hours

25,082,225 total vaccine doses administered in primary care settings

1,173,610 total vaccine doses administered in aged care and disability settings

NSW	Jurisdictions	Commonwealth
Cumulative	4,467,741	9,497,582
Daily increase	16,437	54,788

VIC	Jurisdictions	Commonwealth
Cumulative	4,999,140	6,526,518
Daily increase	20,379	43,147

QLD	Jurisdictions	Commonwealth
Cumulative	3,300,253	5,140,516
Daily increase	18,214	44,421

WA	Jurisdictions	Commonwealth
Cumulative	1,881,928	2,357,700
Daily increase	14,034	23,803

TAS	Jurisdictions	Commonwealth
Cumulative	495,711	460,427
Daily increase	2,403	4,993

SA	Jurisdictions	Commonwealth
Cumulative	1,386,462	1,577,173
Daily increase	9,544	11,793

ACT	Jurisdictions	Commonwealth
Cumulative	541,481	518,156
Daily increase	3,212	3,562

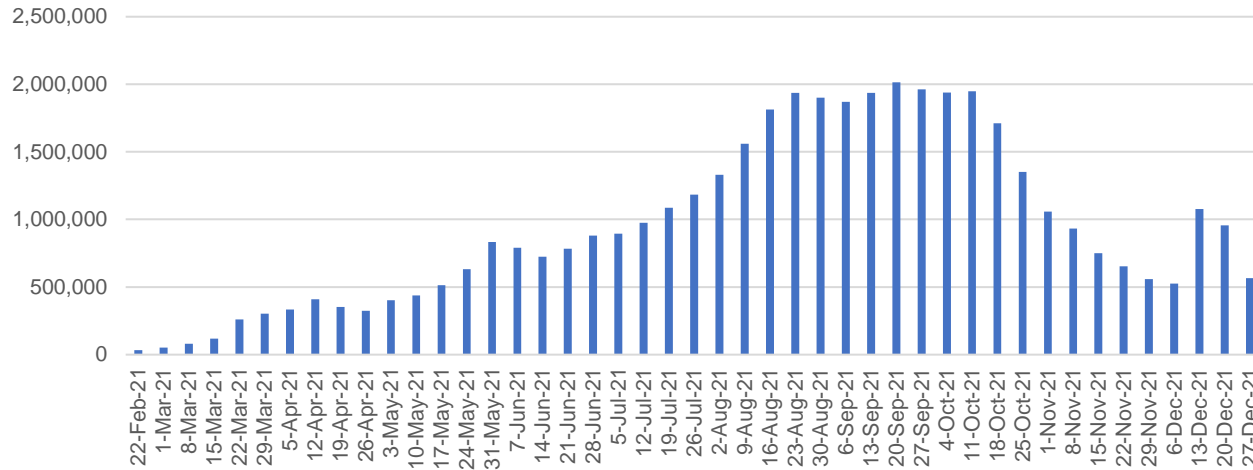
NT	Jurisdictions	Commonwealth
Cumulative	251,104	177,763
Daily increase	1,534	1,008

Vaccine milestone charts

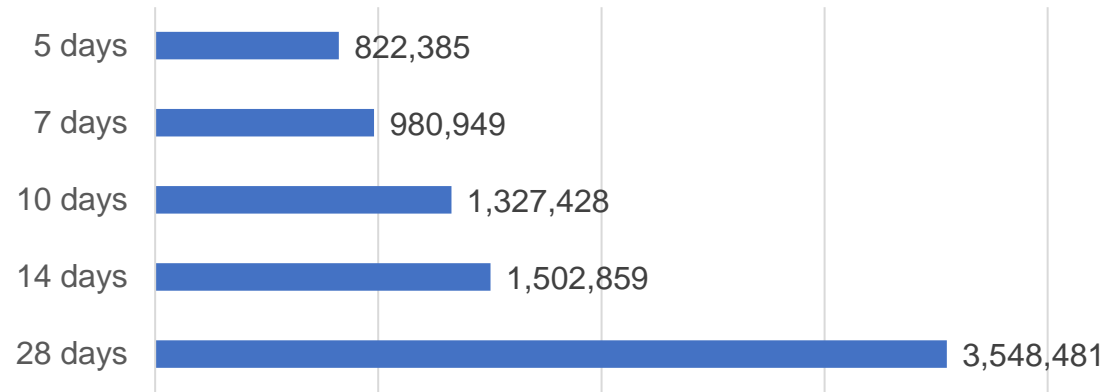
Data as at:
06 Jan 2022

Australia's COVID-19
Vaccine Roadmap

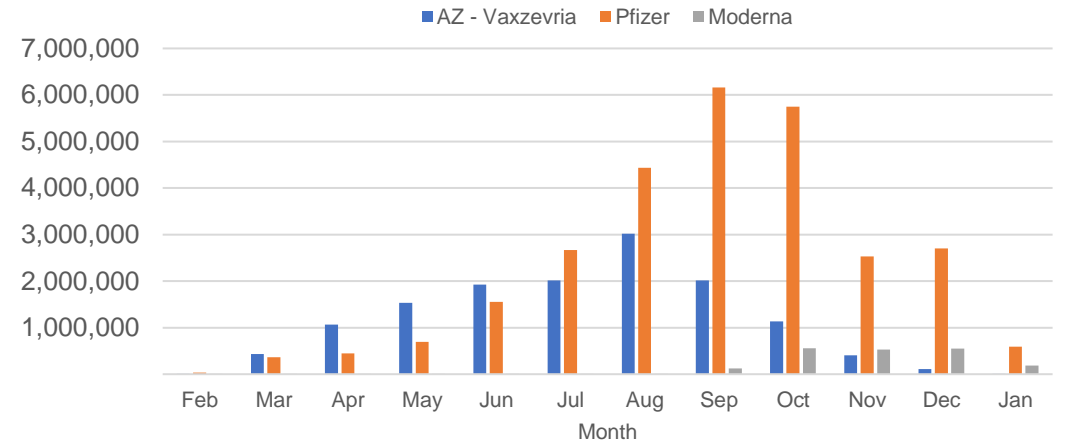
Doses Administered by Week



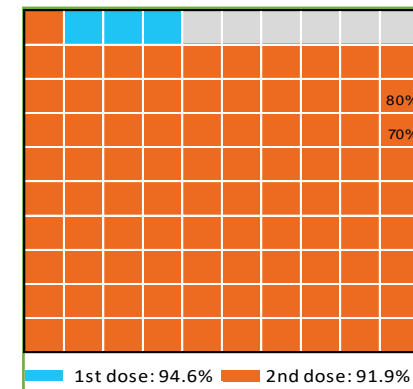
Doses Reported



Doses by administration month and vaccine type



Eligible population percentage coverage



*Sourced from the Australian Immunisation Register.

*Each square represents 1% of the national population. Squares are filled as milestones are achieved.

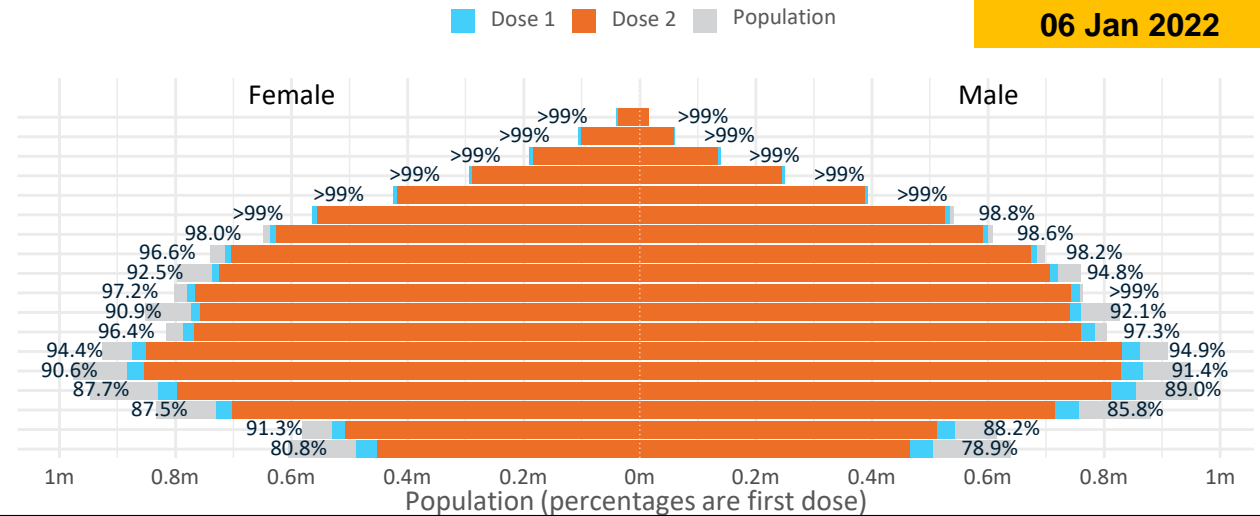
Doses by age and sex

First and second doses by age and sex

Data as at:
06 Jan 2022

	16+	50+	70+	12-15
Dose 1	94.62% (19,509,849 doses / 20,619,959 people)	98.82% (8,646,255 doses / 8,749,703 people)	>99% (3,010,482 doses / 2,934,706 people)	79.84% (993,247 doses / 1,243,990 people)
Dose 2	91.85% (18,940,327 doses / 20,619,959 people)	96.97% (8,484,674 doses / 8,749,703 people)	>99% (2,949,305 doses / 2,934,706 people)	73.74% (917,322 doses / 1,243,990 people)

Age	Dose 1	Dose 2
95+	55,047 (>99%)	51,263 (96.9%)
90-94	165,899 (>99%)	158,652 (>99%)
85-89	328,003 (>99%)	317,979 (>99%)
80-84	544,329 (>99%)	532,998 (>99%)
75-79	818,704 (>99%)	805,831 (>99%)
70-74	1,098,500 (>99%)	1,082,582 (98.0%)
65-69	1,237,747 (98.4%)	1,218,522 (96.8%)
60-64	1,400,761 (97.5%)	1,377,012 (95.8%)
55-59	1,458,158 (93.7%)	1,432,154 (92.1%)
50-54	1,539,107 (98.4%)	1,507,681 (96.4%)
45-49	1,535,227 (91.6%)	1,499,149 (89.4%)
40-44	1,571,600 (97.0%)	1,527,877 (94.3%)
35-39	1,741,359 (94.9%)	1,683,970 (91.8%)
30-34	1,758,101 (91.4%)	1,687,725 (87.7%)
25-29	1,694,088 (88.9%)	1,616,877 (84.8%)
20-24	1,490,198 (87.0%)	1,420,444 (83.0%)
16-19	1,073,021 (89.7%)	1,019,611 (85.3%)
12-15	993,247 (79.8%)	917,322 (73.7%)

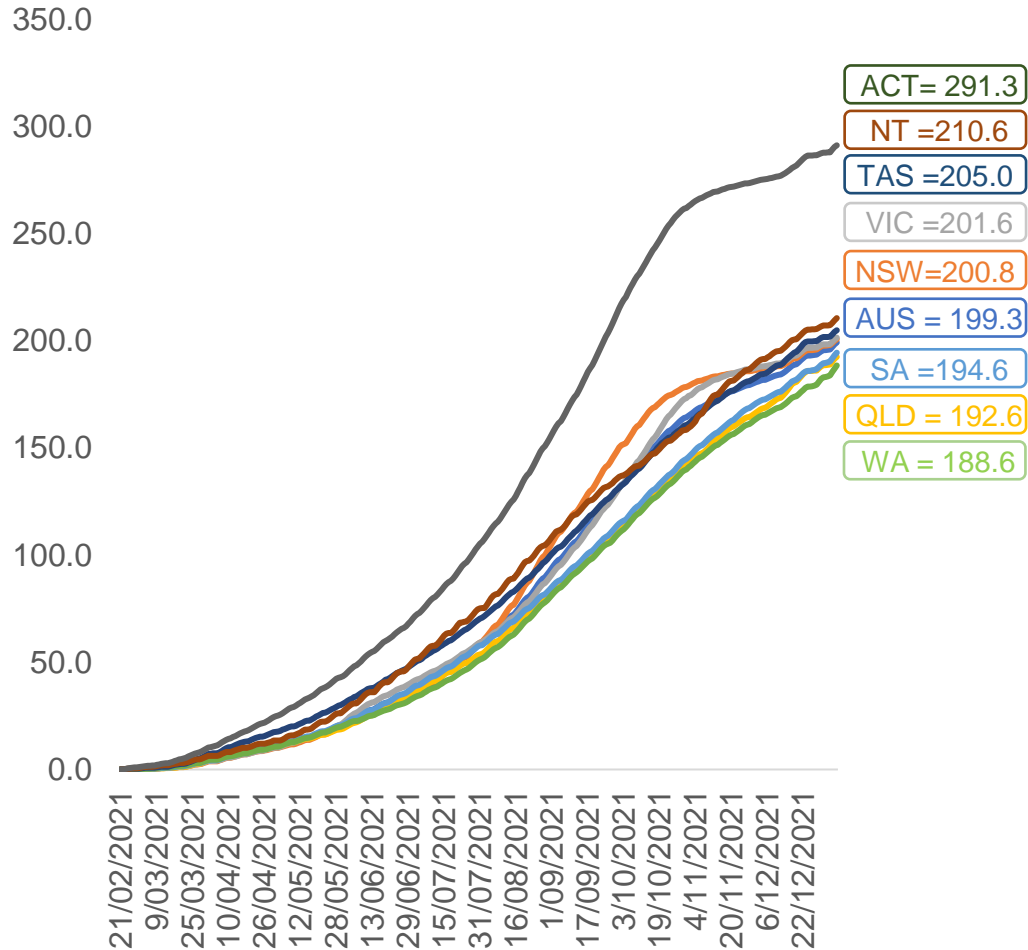


	AUS	ACT	NSW	NT	QLD	SA	TAS	VIC	WA
16 and over - dose 1	19,509,849	347,428	6,242,013	170,398	3,743,333	1,334,069	431,605	5,078,016	1,956,857
16 and over - dose 2	18,940,327	342,677	6,149,657	161,802	3,597,164	1,279,136	413,283	5,004,149	1,807,372
16 and over - population	20,619,959*	344,037	6,565,651	190,571	4,112,707	1,440,400	440,172	5,407,574	2,114,978
16 and over % with dose 1	94.62%	>99%	95.07%	89.41%	91.02%	92.62%	98.05%	93.91%	92.52%
16 and over % with dose 2	91.85%	>99%	93.66%	84.90%	87.46%	88.80%	93.89%	92.54%	85.46%
50 and over - dose 1	8,646,255	134,608	2,785,430	56,826	1,695,057	655,416	216,119	2,185,485	860,174
50 and over - dose 2	8,484,674	133,078	2,753,080	55,196	1,657,126	638,504	210,951	2,158,988	825,950
50 and over - population	8,749,703	127,802	2,807,793	62,280	1,758,855	674,384	220,036	2,211,211	885,370
50 and over % with dose 1	98.82%	>99%	>99%	91.24%	96.37%	97.19%	98.22%	98.84%	97.15%
50 and over % with dose 2	96.97%	>99%	98.05%	88.63%	94.22%	94.68%	95.87%	97.64%	93.29%
70 and over - dose 1	3,010,482	44,007	987,438	11,737	581,828	245,304	79,388	756,227	282,713
70 and over - dose 2	2,949,305	43,368	972,738	11,374	568,827	238,600	77,317	744,435	273,072
70 and over - population	2,934,706	39,946	962,606	12,343	577,767	240,514	77,155	743,519	280,281
70 and over % with dose 1	>99%	>99%	>99%	95.09%	>99%	>99%	>99%	>99%	>99%
70 and over % with dose 2	>99%	>99%	>99%	92.15%	98.45%	>99%	>99%	>99%	97.43%
12 to 15 - dose 1	993,247	19,723	317,955	10,055	191,347	62,967	20,837	270,832	91,943
12 to 15 - dose 2	917,322	19,112	304,754	8,747	171,982	56,156	18,834	258,423	72,980
12 to 15 - population	1,243,990	19,693	390,330	13,060	270,146	82,747	26,308	308,611	132,869
12 to 15 % with dose 1	79.84%	>99%	81.46%	76.99%	70.83%	76.10%	79.20%	87.76%	69.20%
12 to 15 % with dose 2	73.74%	97.05%	78.08%	66.98%	63.66%	67.86%	71.59%	83.74%	54.93%

*National population will not equal sum of listed jurisdictions due to a small number of people counted in national population residing in some 'other' territories. Sum of state doses will not add to national total as some records are unable to be geocoded to a State or Territory.
Doses sourced from Australian Immunisation Register, population from ABS ERP June 2020

Vaccinations by location

Cumulative total doses administered vs eligible state populations*

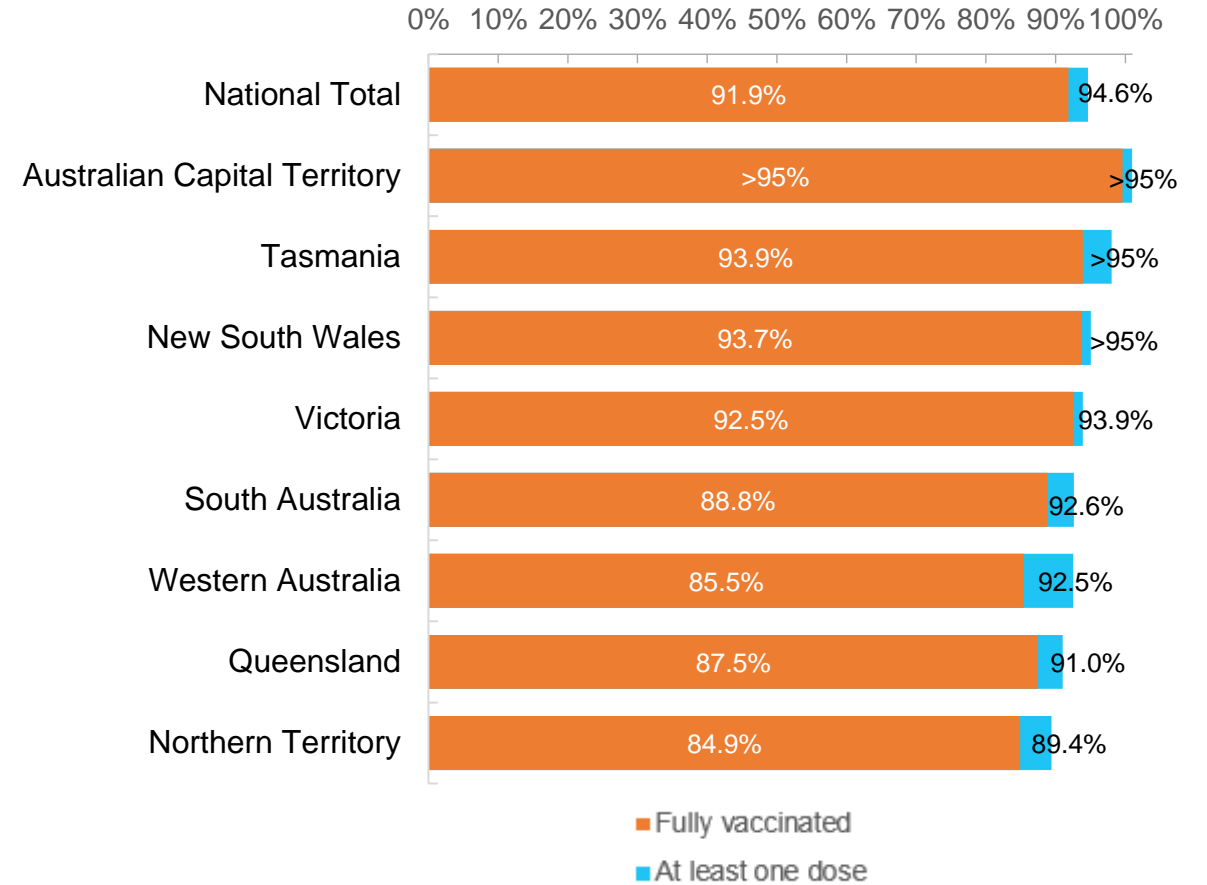


*Not an indication of percentage vaccinated, numbers will exceed 100 due to multiple doses required per person of the population. All doses are included, including those for the 12-15 cohort, and are based on vaccination provider location.

Data as at:
06 Jan 2022

Australia's COVID-19
Vaccine Roadmap

First and Second Doses by state of residence



Aboriginal and Torres Strait Islander peoples

Number of people vaccinated

Data as at:
04 Jan 2022
Updated weekly

Australia's COVID-19
Vaccine Roadmap



416,820

people over the age of 16
have had at least one dose

79.2%

of people over the age of 16
have had at least one dose



377,876

people over the age of 16
are fully vaccinated

71.8%

of people over the age of 16 are
fully vaccinated



**42,670
(59.9%)**

people aged 12-15 years
have had at least one dose

173 Aboriginal community controlled health services (ACCHS)

0#	50	27	41	12	3	21	19
ACT	NSW	NT	QLD	SA	TAS	VIC	WA

Medicare Address State ^{##}	Individuals Dose 1	Individuals Dose 1 %	Individuals Dose 2	Individuals Dose 2 %
Australian Capital Territory	4,936	90.8%	4,786	88.0%
New South Wales	137,410	86.2%	133,442	83.7%
Northern Territory	39,736	84.5%	34,873	74.1%
Queensland	108,816	76.0%	95,784	66.9%
South Australia	18,762	73.9%	16,409	64.6%
Tasmania	14,411	85.2%	13,385	79.1%
Victoria	35,671	88.6%	34,513	85.7%
Western Australia	42,976	67.5%	33,545	52.7%
Unknown/Other Territories	14,102	56.4%	11,139	44.5%
Totals	416,820	79.2%	377,876	71.8%

Source: Australian Immunisation Register

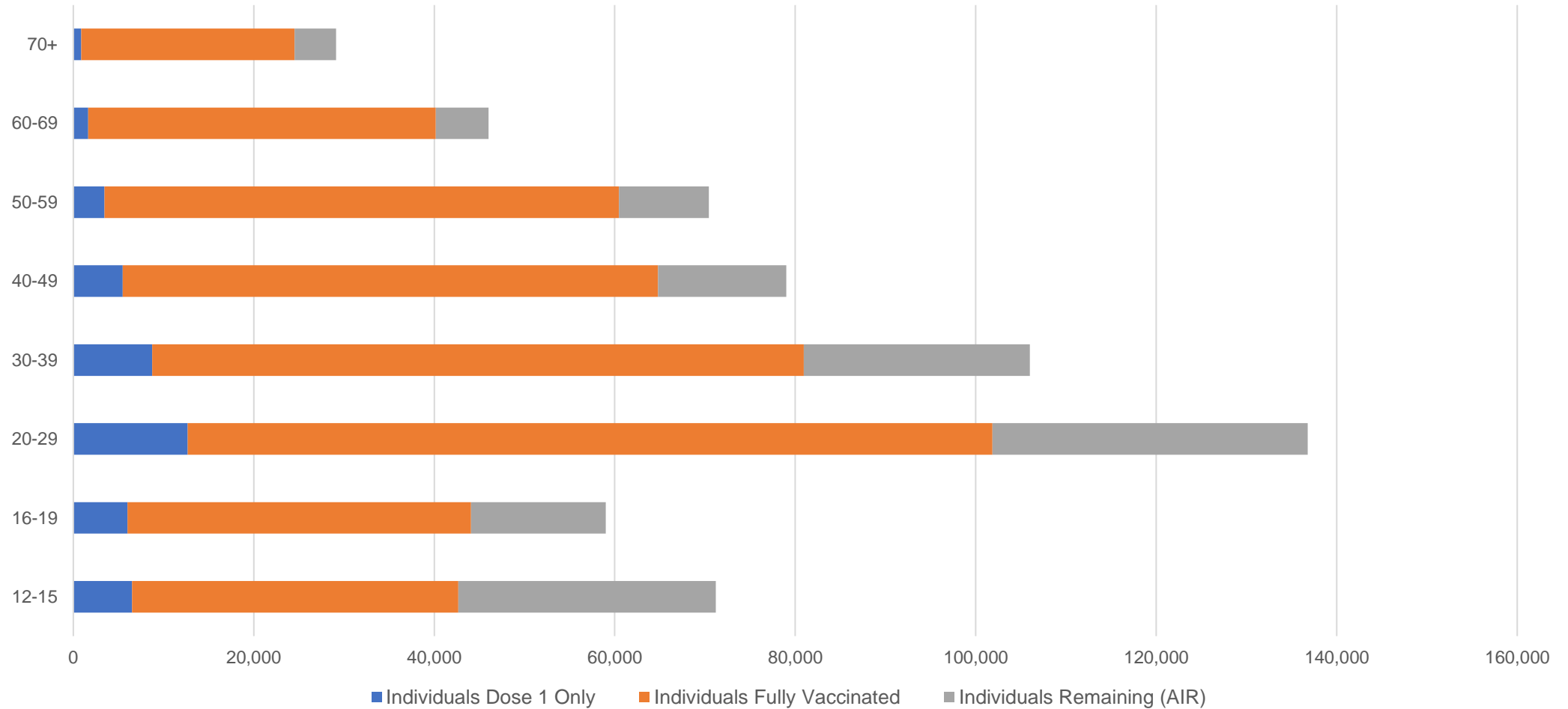
*Identifying as Aboriginal and Torres Strait Islander is optional and the estimated population may be under reported.
 **Includes all Aboriginal and Torres Strait Islander peoples who have received a vaccination, not limited to those administered in an ACCHS setting
 #ACCHS in the ACT are currently operating as a Commonwealth Vaccine Clinics so not included to avoid double counting
 ##The above table includes all identified Aboriginal and Torres Strait Islander people who are aged 16 and above by their state of residence.

Aboriginal and Torres Strait Islander peoples

Number of people vaccinated by age

Data as at:
04 Jan 2022
Updated weekly

Australia's COVID-19
Vaccine Roadmap



Source: Australian Immunisation Register

Data as at:
06 Jan 2022

Commonwealth primary care



Primary care vaccine administration sites

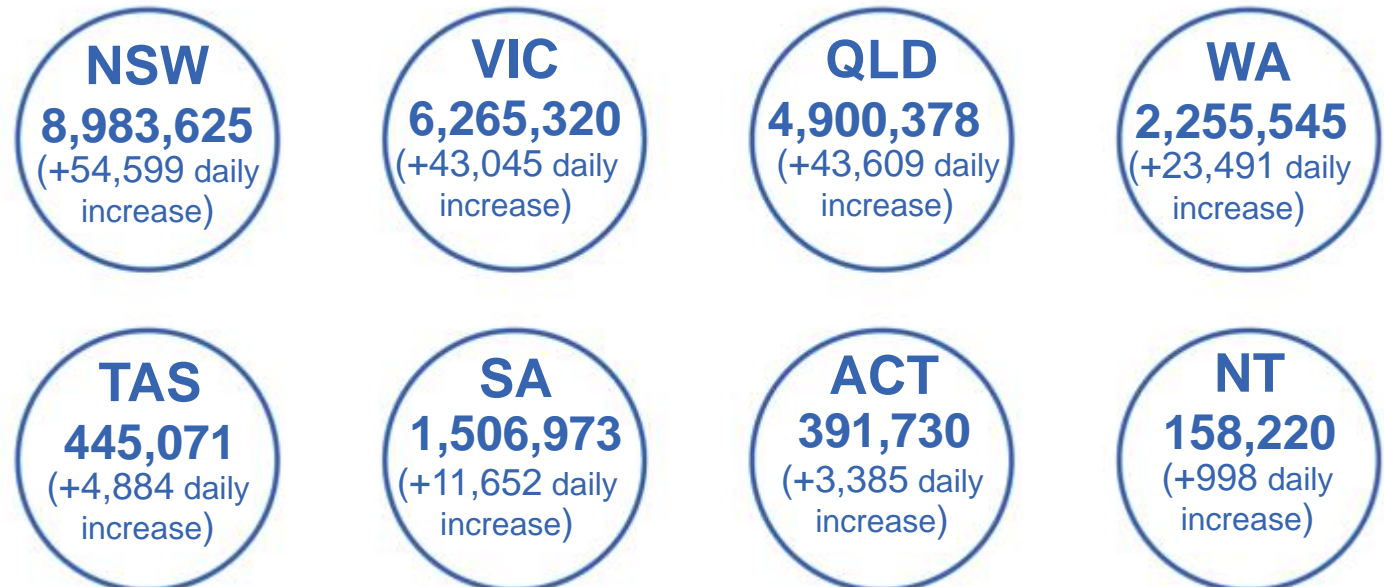
5,676	137	173	3,472
GPs	CVCs	ACCHS	Pharmacies



25,082,225 total vaccine doses administered
primary care settings as at 06 January
+ 187,293 recorded in the last 24 hours

Primary care vaccinations by provider type

	Doses administered	Daily increase	7 day increase
General Practice* includes other Commonwealth	21,599,716	105,677	348,466
Pharmacy	3,482,509	81,616	300,633



175,363 doses administered to persons residing in other territories or with missing residential information

*General practice includes Commonwealth Vaccination Clinics, Aboriginal Community Health Centres, Royal Flying Doctor Service and other Commonwealth vaccination facilities

Source: Australian Immunisation Register

Data as at:
06 Jan 2022

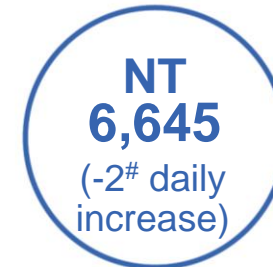
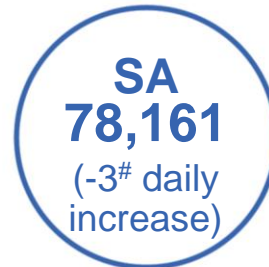
Commonwealth aged care and disability doses administered



1,173,610 (+ 222 last 24 hours)

Total vaccine doses administered in aged care and disability facilities as at 06 January

Number of doses administered as part of the Commonwealth aged and disability care rollout



28,223

doses administered to persons residing in other territories or with missing residential information

Source: Australian Immunisation Register

*Sourced from the Australian Immunisation Register. Includes all persons vaccinated at participating residential aged care, disability and related industry settings.

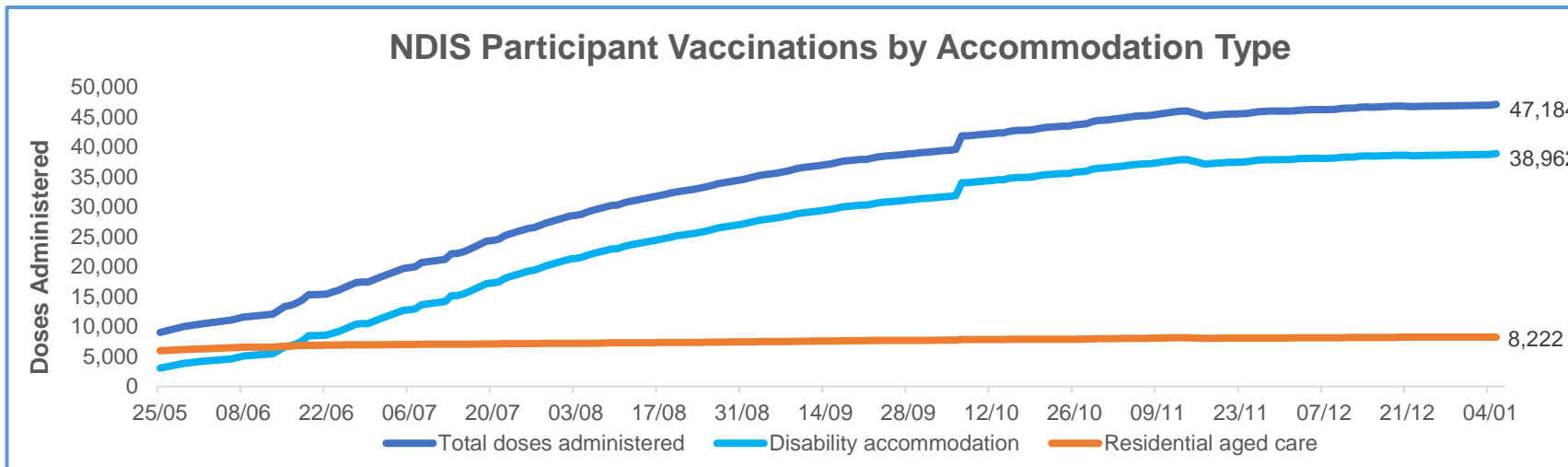
**State level breakdown indicates the residential location and may not align to the state in which the vaccination occurred.

Numbers are calculated as difference in daily cumulative reported numbers to allow for historical corrections in all data sources. This can occasionally result in negative numbers, such as for NSW, SA, ACT and NT, where historical details about doses have been updated.

Data as at:
6 Jan 2022*

Vaccination rate of people with disability and the disability workforce

Phase 1a – People with disability living in shared accommodation



	Total people with at least one dose	People fully vaccinated	Total number of individuals in cohort	Total doses administered	% People with at least one dose	% People fully vaccinated
NDIS participants living in shared accommodation **	23,939	23,245	27,603	47,184	86.7%	84.2%
NDIS screened workers ***	237,431	232,445	267,670	469,876	88.7%	86.8%



* Updates are available Monday to Friday on participants, and bi-weekly for workers, numbers may be up to four days old.

** Shared accommodation means two or more people with disability living in shared residential accommodation and NDIS participants living in Residential Aged Care accommodation as per the eligibility criteria of Phase 1a. The number of residents changes over time and refinement of methodology can lead to corrections in totals.

*** Total number of workers within the NDIS Commission Worker Screening database who have ever been successfully screened and linked to an NDIS registered provider or participant.

Source: Linkage between National Disability Insurance Agency data, NDIS Quality and Safeguards Commission data and the Australian Immunisation Register.

Residential aged care vaccination rollout

Residential aged care facilities status

100%

Commonwealth facilities visited (2,591 planned sites)

163,183

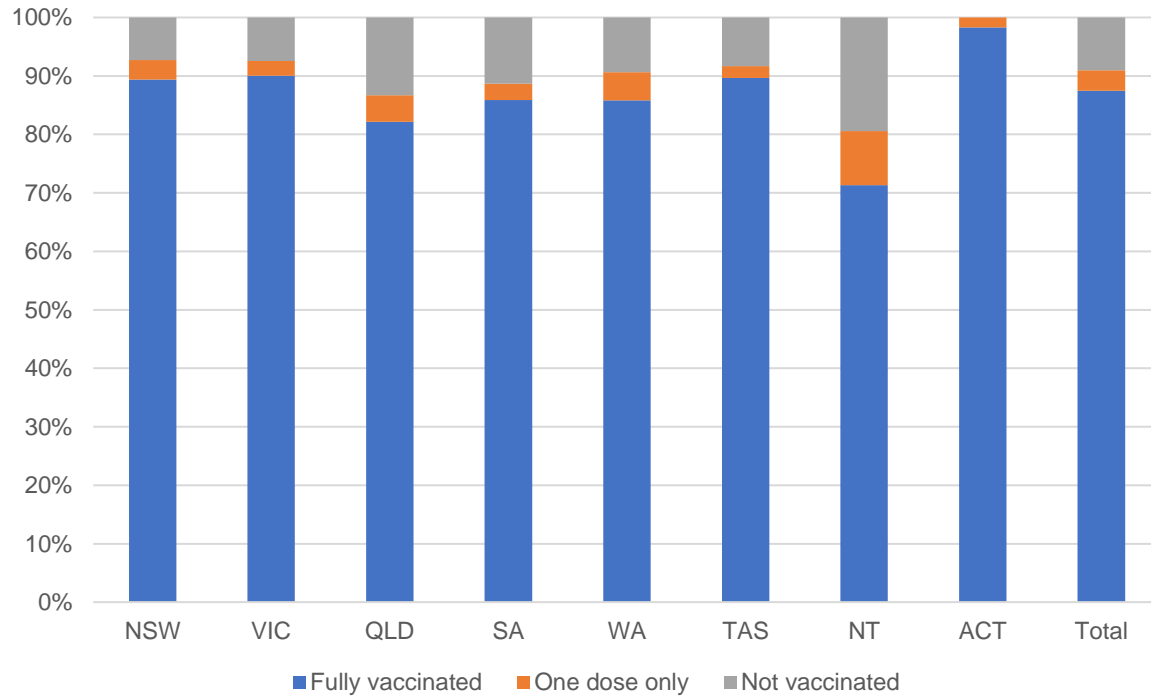
People fully vaccinated

169,637

People with at least one dose

Data as at: 06 Jan 2022

Aged care resident vaccinations



Aged care worker vaccinations

Jurisdictions	Total workers with at least one dose	Workers fully vaccinated	% Workers with at least one dose	% Workers fully vaccinated
NSW	79,005	78,966	99.3%	99.2%
VIC	71,148	71,148	99.4%	99.4%
QLD	48,838	48,817	100.0%	99.9%
SA	27,575	27,505	99.6%	99.4%
WA	23,753	23,676	100.0%	99.7%
TAS	7,580	7,537	100.0%	99.4%
NT	851	850	100.0%	99.9%
ACT	2,869	2,869	95.9%	95.9%
Total	261,619	261,368	99.5%	99.4%

Source: My Aged Care Portal staff vaccination progress

**Resident vaccination information is reported manually by service providers

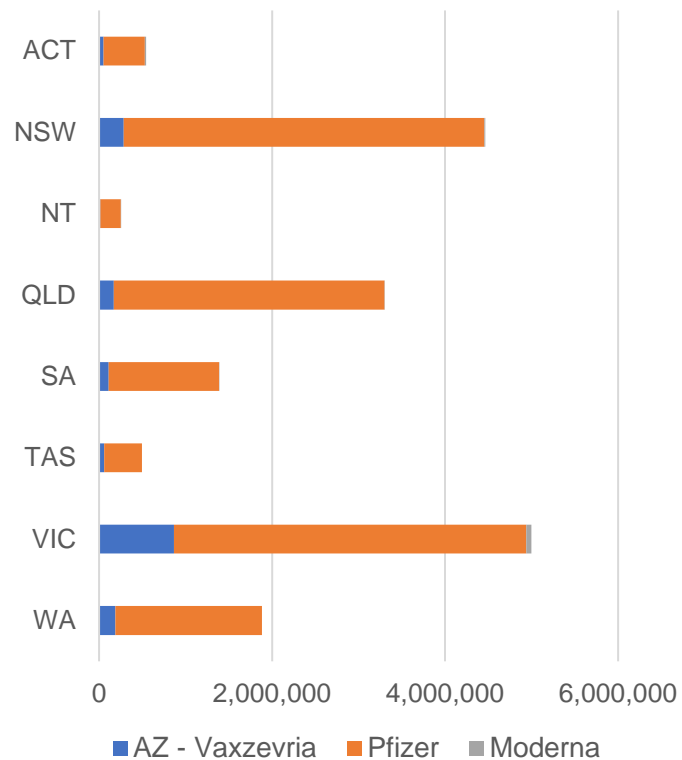
*Status updates are provided by facilities at least once per week. Reporting is updated Monday to Friday to encompass different facility updates being made on different days.

Data is sourced directly from Aged Care Service Providers and is not drawn or closely aligned with data from AIR due to inconsistencies and potential lags in uploading of records.

Data as at:
06 Jan 2022

Jurisdiction administered

Total vaccine doses administered in State and Territory clinics as at 06 January



17,323,820 total vaccine doses administered in State and Territory clinics as at 06 January
 + **85,757** recorded in the last 24 hours
 + **331,441** recorded in the last 7 days

NSW
4,467,741
 (+16,437 daily increase)

VIC
4,999,140
 (+20,379 daily increase)

QLD
3,300,253
 (+18,214 daily increase)

WA
1,881,928
 (+14,034 daily increase)

TAS
495,711
 (+2,403 daily increase)

SA
1,386,462
 (+9,544 daily increase)

ACT
541,481
 (+3,212 daily increase)

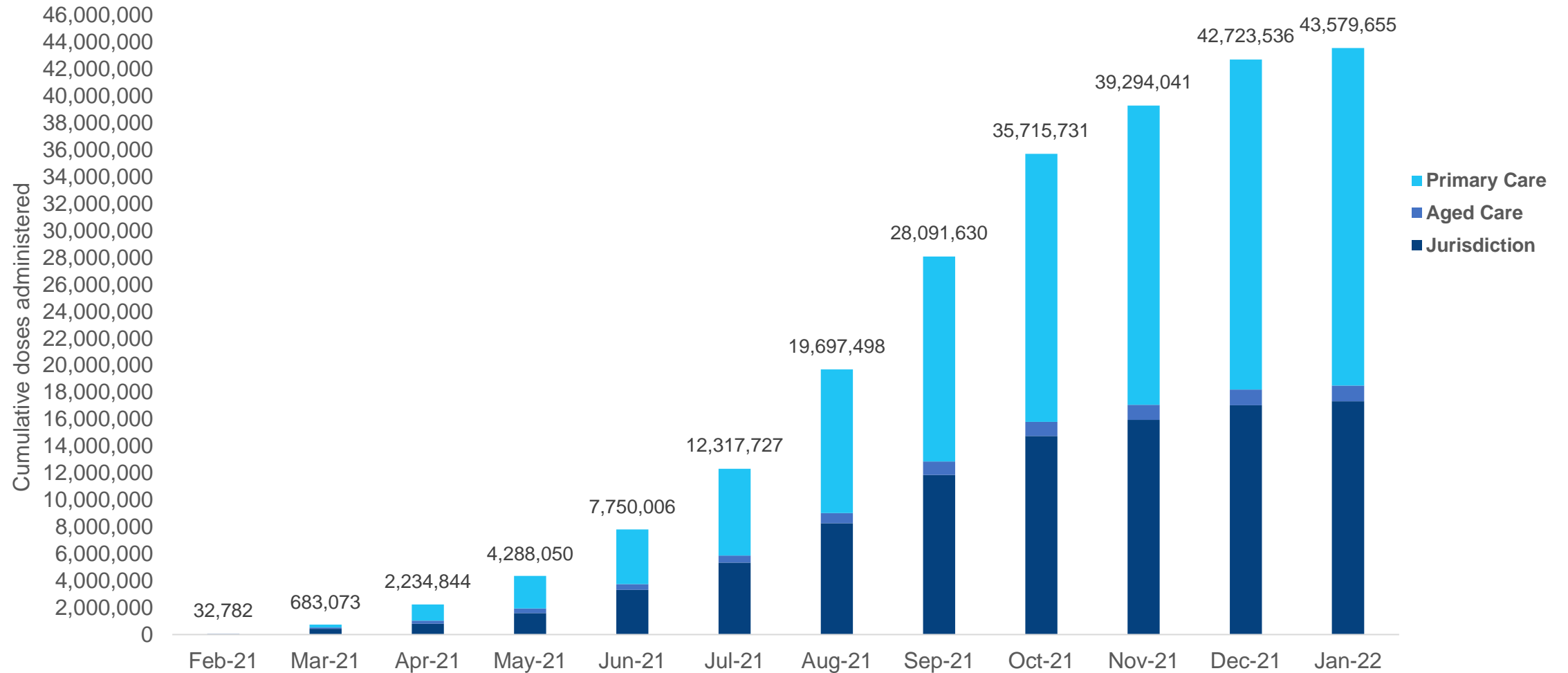
NT
251,104
 (+1,534 daily increase)

*Sourced from the Australian Immunisation Register and self-reported data. Numbers are calculated as difference in daily cumulative reported numbers to allow for historical corrections in all self-reported data sources.

Source: Australian Immunisation Register

Data as at:
06 Jan 2022

Cumulative doses administered by channel



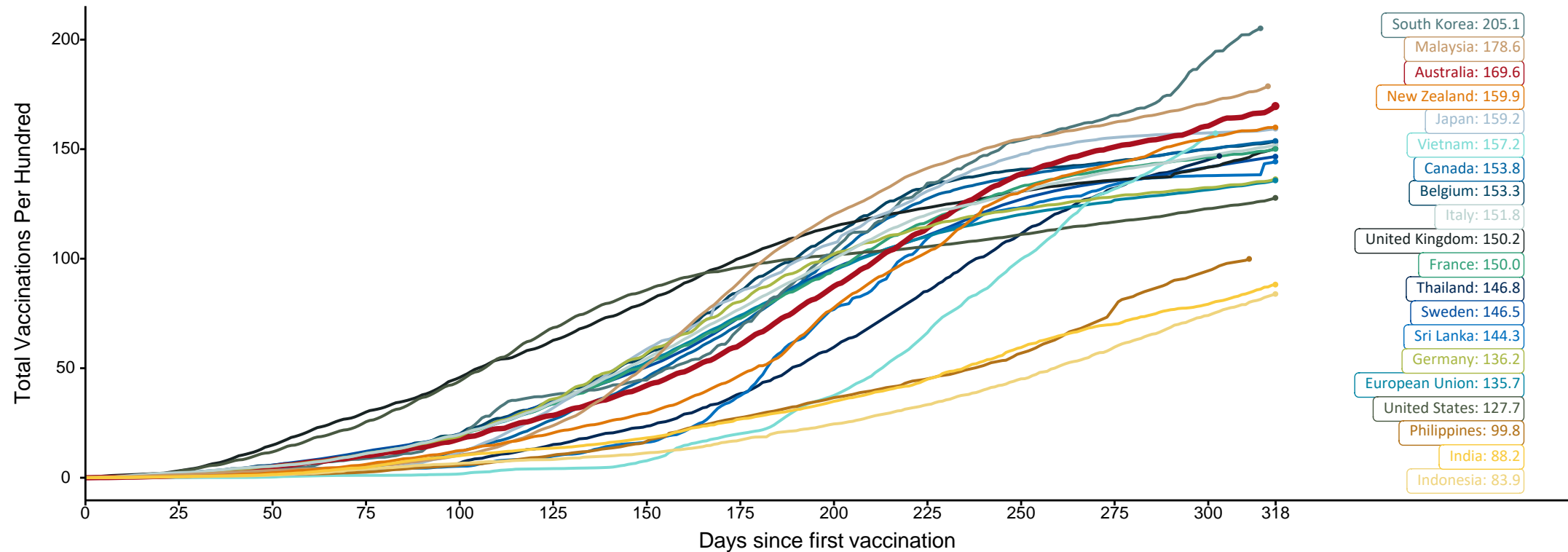
Source: Australian Immunisation Register

Doses at equivalent stages of rollout (Day 318)

Data as at:
06 Jan 2022

The x-axis is truncated at the length of Australia's vaccination program. Countries with intermittent reporting have had their doses per 100 imputed to Australia's current stage of rollout. Israel excluded as it is beyond scale of the graph

Cumulative doses administered (06 Jan): **43,579,655**

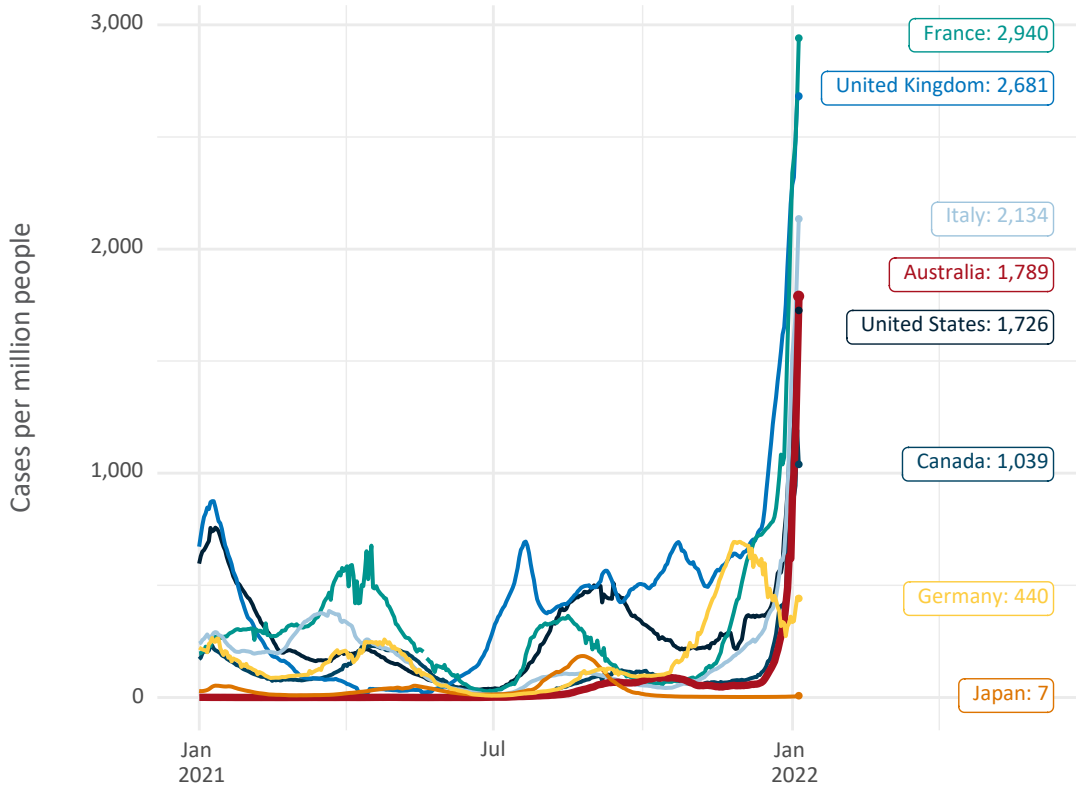


Note: From 15 September 2021, data for Australia includes all doses administered to people 12 and over. Prior to 15 September, data was for 16 and over
 Due to data revisions, Singapore has been removed from the chart
 Source: Department of Health (Australia), Our World in Data (international)
 Latest data: 06 January

Data as at: 06 Jan 2022

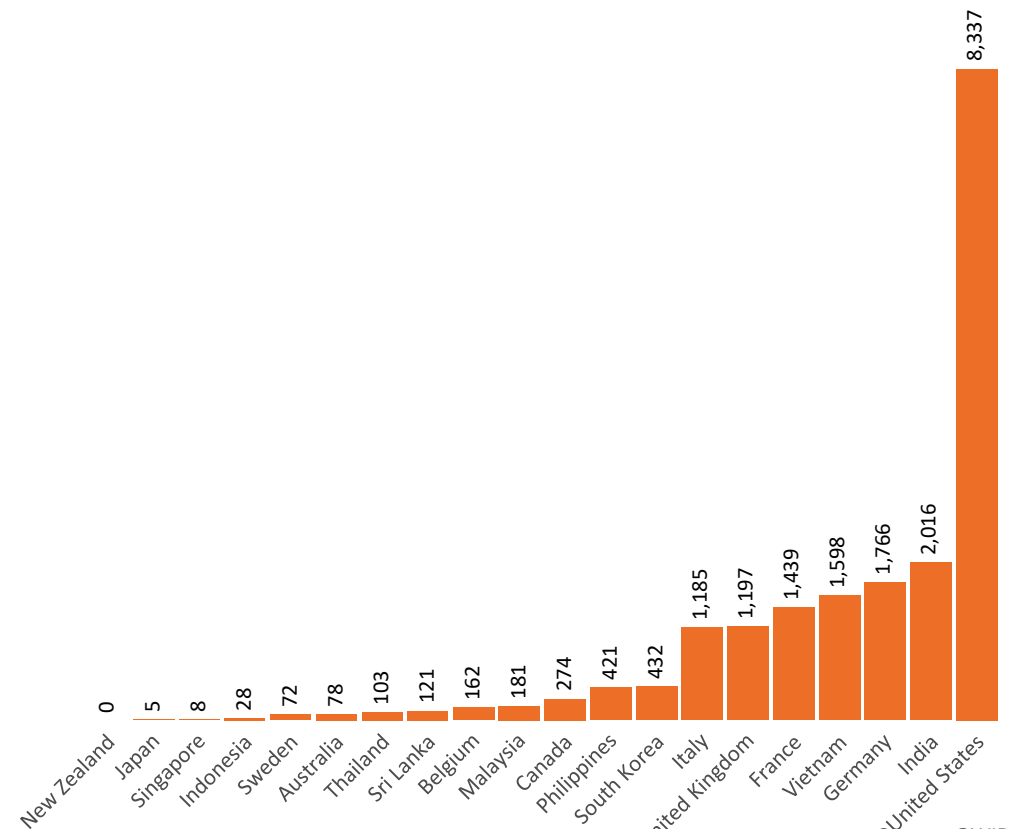
International data – COVID-19

New daily cases per million in 2021, Australia and G7 countries
Smoothed - 7 day average



Source: OWID
Data downloaded: 07 Jan 2022 07:43
Latest data: 05 Jan 2022


COVID-19 deaths in past 7 days - Australia and select countries



Source: OWID
Data downloaded: 07 Jan 2022 07:43
Latest data: 05 Jan 2022

Data as at midnight:
3 Jan 2022

Pandemic Response Payments



2.38 million
People have received at least one COVID Disaster Payment (including ISP200)

\$13.10 billion
Paid Out as at 3 Jan 2022


6.15 million
Claims granted across three different payments



96%
of Claims Received Digitally



COVID Disaster Payment:	5.89 million claims received - 2.19 million individuals paid a total of \$12.59 billion.
\$200 Income Support Payment:	353,000 claims received - 183,000 individuals paid a total of \$268.91 million.
Pandemic Leave Disaster Payment:	197,000 claims received - 151,000 individuals paid a total of \$236.33 million.



THREE PAYMENTS AVAILABLE

COVID Disaster Payment
assisting during a lockdown event in a Commonwealth hotspot.

Income Support Payment \$200
for income support recipients who lost at least 8 hours of work.

Pandemic Leave Disaster Payment
for those who have to self-isolate, quarantine or care.

For more information visit:
servicesaustralia.gov.au

COVID-19 DISASTER PAYMENTS

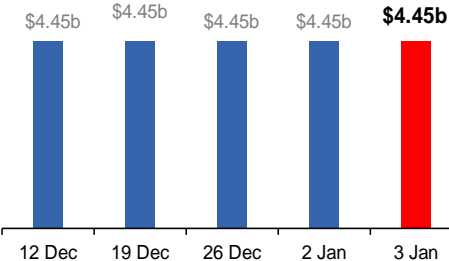
Victoria
Lockdown (#6) from 6 Aug to 28 Oct
Claiming period ended 9 Dec

745,000 people have received at least one COVID Disaster Payment.

\$4.45b paid out as at 3 Jan 2022.

\$6,000 paid in initial and reoccurring payments in the week ending 2 Jan 2022.

Cumulative payments made by State since activation on 8 Jun 2021.



Date	Cumulative Payments (\$b)
12 Dec	\$4.45b
19 Dec	\$4.45b
26 Dec	\$4.45b
2 Jan	\$4.45b
3 Jan	\$4.45b

Northern Territory
Lockdown (#3) from 16 Nov to 22 Nov
Claiming period ends 27 Dec

7,500 people have received at least one COVID Disaster Payment.

\$6.9m paid out as at 3 Jan 2022.

\$39,000 paid in initial payments in the week ending 2 Jan 2022.

Cumulative payments made by Territory since activation on 25 Aug 2021.



Date	Cumulative Payments (\$m)
12 Dec	\$6.5m
19 Dec	\$6.7m
26 Dec	\$6.9m
2 Jan	\$6.9m
3 Jan	\$6.9m

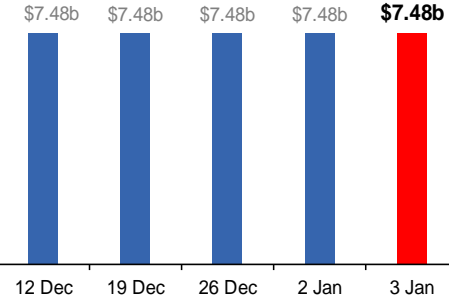
New South Wales
Lockdown from 24 Jun to 10 Oct
Claiming period ended 27 Nov

1.08m people have received at least one COVID Disaster Payment.

\$7.48b paid out as at 3 Jan 2022.

\$2,000 paid in initial and reoccurring payments in the week ending 2 Jan 2022.

Cumulative payments made by State since activation on 1 Jul 2021.



Date	Cumulative Payments (\$b)
12 Dec	\$7.48b
19 Dec	\$7.48b
26 Dec	\$7.48b
2 Jan	\$7.48b
3 Jan	\$7.48b

Australian Capital Territory
Lockdown from 12 Aug to 14 Oct
Claiming period ended 25 Nov

65,000 people have received at least one COVID Disaster Payment.

\$344.7m paid out as at 3 Jan 2022.

\$0 paid in initial and reoccurring payments in the week ending 2 Jan 2022.

Cumulative payments made by Territory since activation on 20 Aug 2021.



Date	Cumulative Payments (\$m)
12 Dec	\$344.7m
19 Dec	\$344.7m
26 Dec	\$344.7m
2 Jan	\$344.7m
3 Jan	\$344.7m

Data as at midnight:
3 Jan 2022

Pandemic Response Payments (continued)

COVID-19 DISASTER PAYMENTS


Tasmania

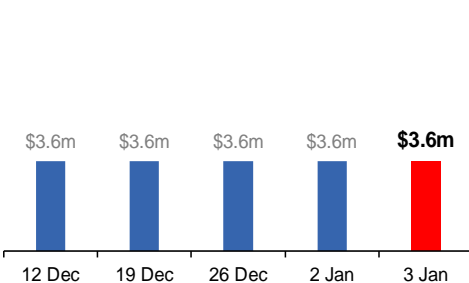
Lockdown from 15 Oct to 18 Oct
Claiming period ended 12 Nov

6,900 people have received at least one COVID Disaster Payment.

\$3.6m paid out as at 3 Jan 2022.

\$0 paid in initial and reoccurring payments in the week ending 2 Jan 2022.

 Cumulative payments made by State since activation on 22 Oct 2021.




Queensland

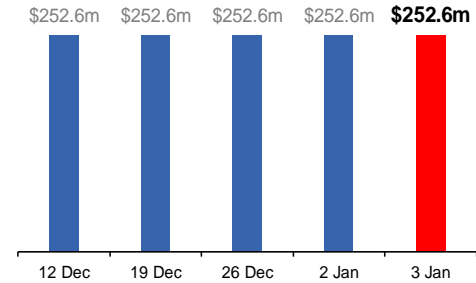
Lockdown from 31 Jul to 11 Aug
Claiming period ended 28 Aug

196,000 people have received at least one COVID Disaster Payment.

\$252.6m paid out as at 3 Jan 2022.

\$0 paid in initial and reoccurring payments in the week ending 2 Jan 2022.

 Cumulative payments made by State since activation on 7 Aug 2021.



South Australia

Lockdown from 21 to 27 Jul
Claiming period ended 17 Aug

86,000 people have received at least one COVID Disaster Payment.

\$48.2m paid out as at 3 Jan 2022.

\$0 paid in initial and reoccurring payments in the week ending 2 Jan 2022.

 Cumulative payments made by State since activation on 28 Jul 2021.

