



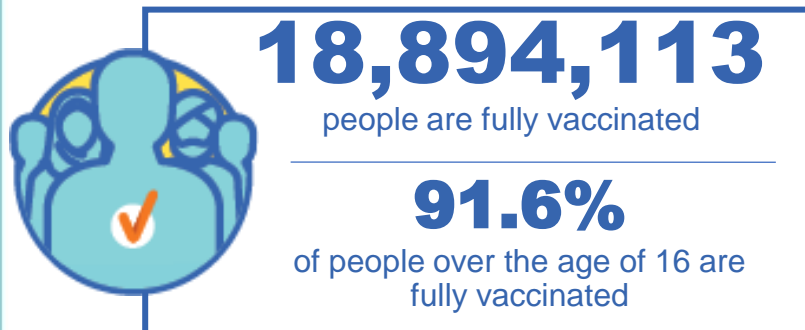
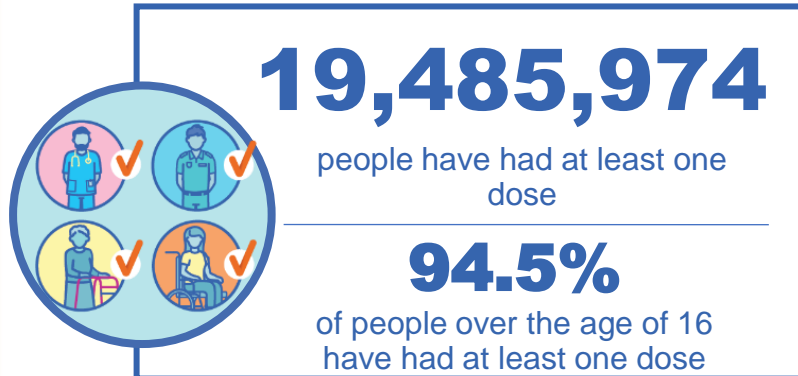
**Australian Government**  
**Operation COVID Shield**

# COVID-19 Vaccine Rollout

05 January 2022

Data as at:  
04 Jan 2022

## Total vaccine doses



**43,044,030** total vaccine  
doses administered nationally as at 04 January

**+212,497** recorded in the last 24 hours

**NSW**  
**13,824,618**  
(+54,221 daily  
increase)

**VIC**  
**11,401,280**  
(+52,803 daily  
increase)

**QLD**  
**8,317,060**  
(+40,803 daily  
increase)

**WA**  
**4,165,444**  
(+34,422 daily  
increase)

**TAS**  
**944,531**  
(+3,338 daily  
increase)

**SA**  
**2,920,414**  
(+20,742 daily  
increase)

**ACT**  
**1,046,876**  
(+4,422 daily  
increase)

**NT**  
**423,807**  
(+1,746 daily  
increase)

\*Administration state breakdown indicates state in which a vaccine was administered

\*\*Overall dose count includes instances of more than two doses per person in a small number of cases.

Source: Australian Immunisation Register

Data as at:  
04 Jan 2022

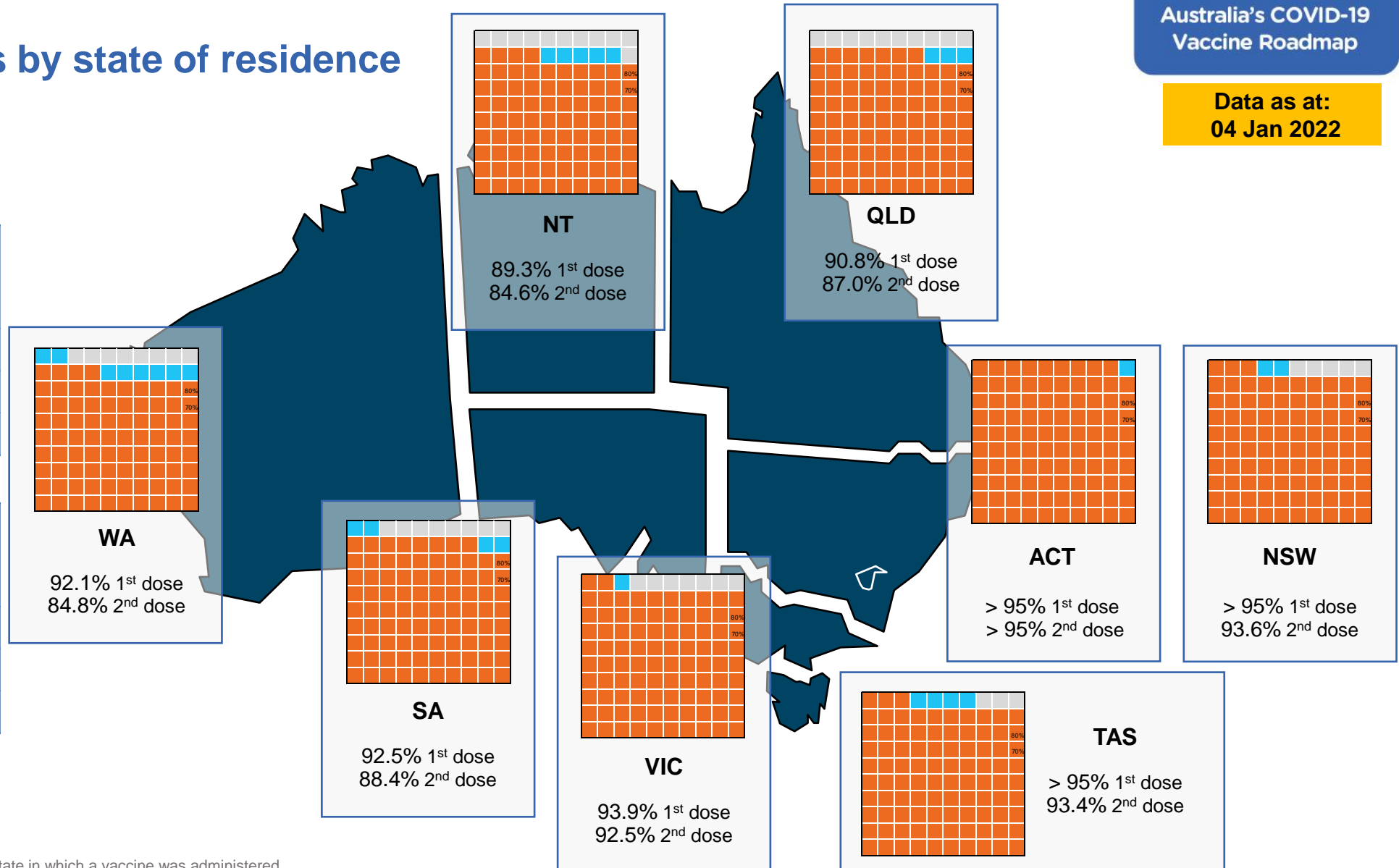
## Vaccinations by state of residence

### First doses

Age	Today	4 weeks ago	8 weeks ago
16+	94.5%	93.3%	90.1%
50+	>95%	>95%	>95%
70+	>95%	>95%	>95%

### Fully vaccinated

Age	Today	4 weeks ago	8 weeks ago
16+	91.6%	88.8%	82.2%
50+	>95%	>95%	90.2%
70+	>95%	>95%	94.8%



\*Residential state may differ from the state in which a vaccine was administered

## Commonwealth and Jurisdiction vaccine doses administered

Data as at:  
04 Jan 2022



**43,044,030** total vaccine  
doses administered nationally as at 04 January  
**+ 212,497** recorded in the last 24 hours



**17,153,260**  
doses administered by state  
and territory facilities  
**+ 58,001**  
recorded in the last 24 hours



**25,890,770**  
doses administered by  
commonwealth facilities  
**+ 154,496**  
recorded in the last 24 hours  
**24,717,300** total vaccine doses  
administered in primary care settings  
**1,173,470** total vaccine doses  
administered in aged care and disability  
settings

NSW	Jurisdictions	Commonwealth
Cumulative	4,432,098	9,392,520
Daily increase	9,418	44,803

VIC	Jurisdictions	Commonwealth
Cumulative	4,958,844	6,442,436
Daily increase	18,405	34,398

QLD	Jurisdictions	Commonwealth
Cumulative	3,263,816	5,053,244
Daily increase	2,794	38,009

WA	Jurisdictions	Commonwealth
Cumulative	1,854,514	2,310,930
Daily increase	14,750	19,672

TAS	Jurisdictions	Commonwealth
Cumulative	493,299	451,232
Daily increase	27	3,311

SA	Jurisdictions	Commonwealth
Cumulative	1,367,491	1,552,923
Daily increase	9,760	10,982

ACT	Jurisdictions	Commonwealth
Cumulative	535,228	511,648
Daily increase	1,588	2,834

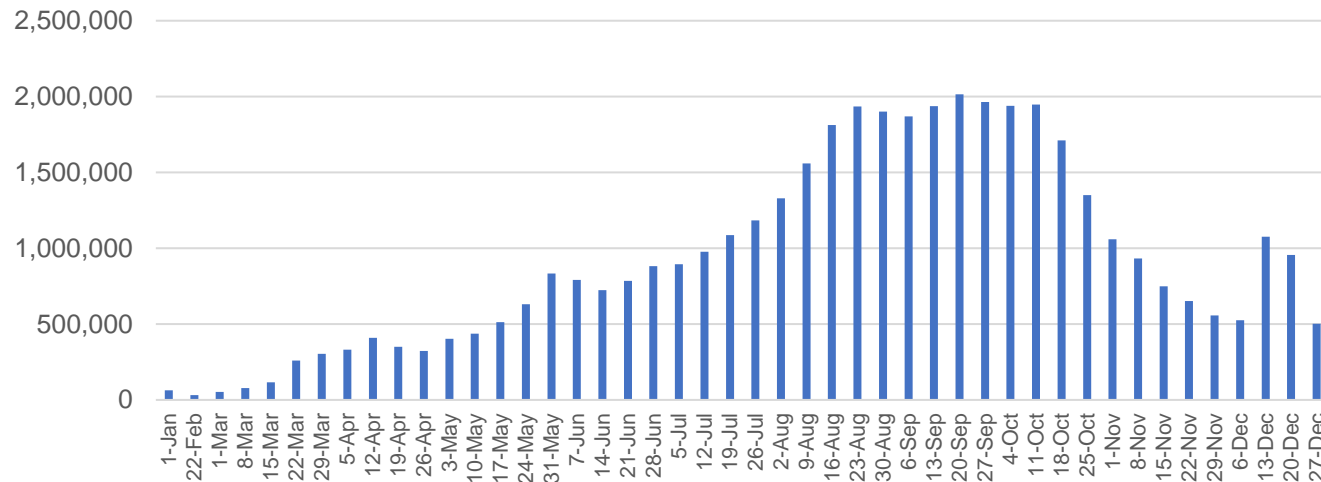
NT	Jurisdictions	Commonwealth
Cumulative	247,970	175,837
Daily increase	1,259	487

# Vaccine milestone charts

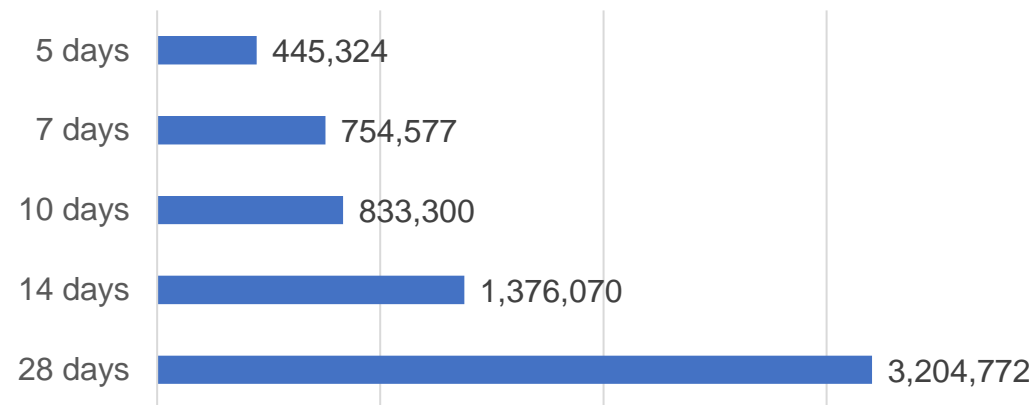
Data as at:  
04 Jan 2022

Australia's COVID-19  
Vaccine Roadmap

Doses Administered by Week

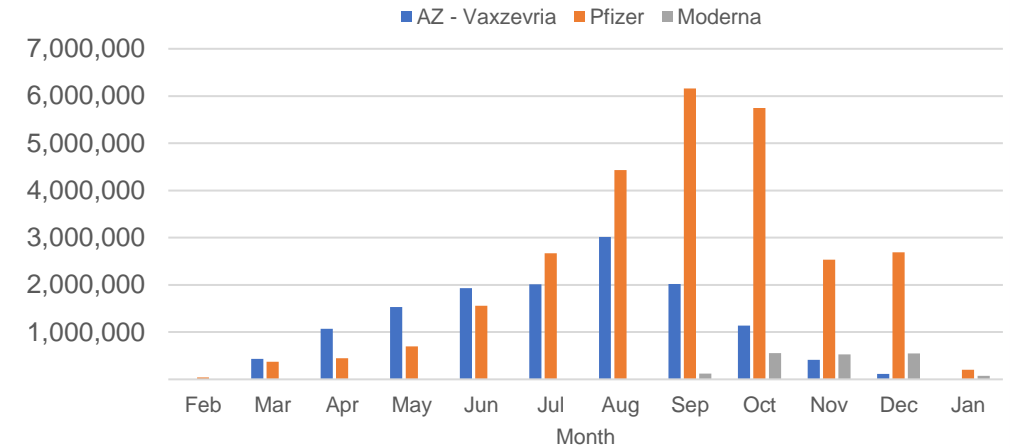


Doses Reported

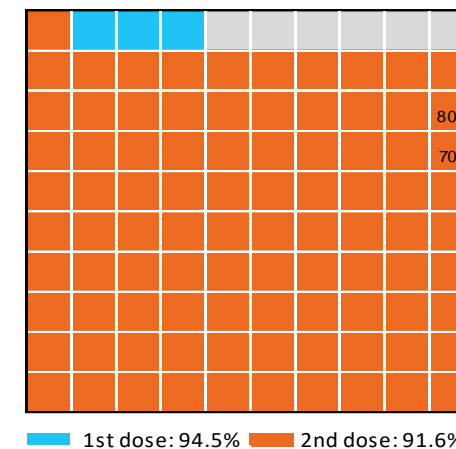


\*Sourced from the Australian Immunisation Register.

Doses by administration month and vaccine type



Eligible population percentage coverage



\*Each square represents 1% of the national population. Squares are filled as milestones are achieved.

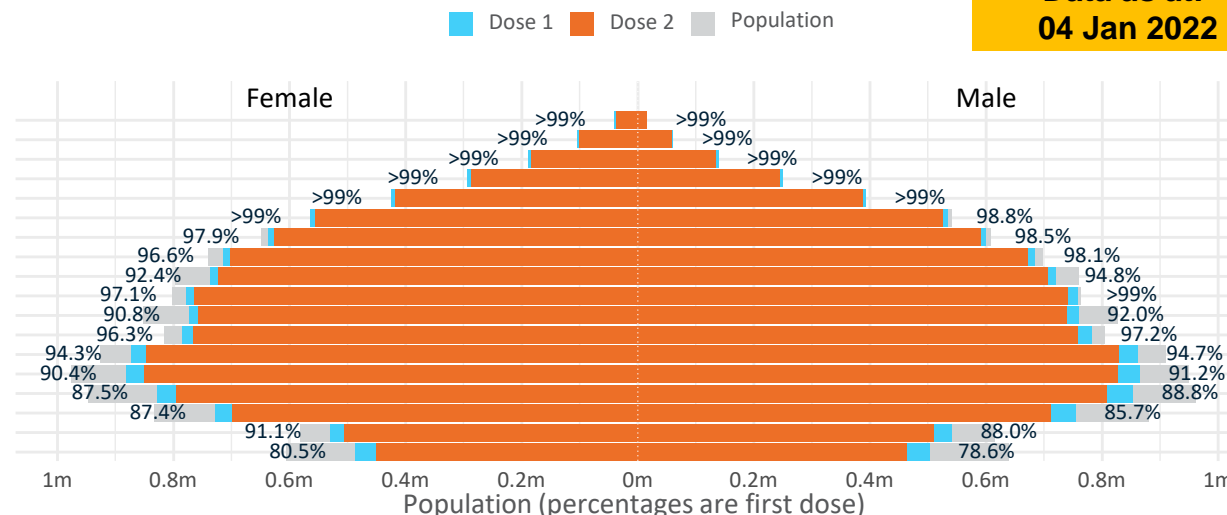
Data as at:  
04 Jan 2022

# Doses by age and sex

First and second doses by age and sex

	16+	50+	70+	12-15
Dose 1	<b>94.50%</b> (19,485,974 doses / 20,619,959 people)	<b>98.74%</b> (8,639,274 doses / 8,749,703 people)	<b>&gt;99%</b> (3,007,975 doses / 2,934,706 people)	<b>79.54%</b> (989,478 doses / 1,243,990 people)
Dose 2	<b>91.63%</b> (18,894,113 doses / 20,619,959 people)	<b>96.83%</b> (8,472,100 doses / 8,749,703 people)	<b>&gt;99%</b> (2,945,184 doses / 2,934,706 people)	<b>73.35%</b> (912,476 doses / 1,243,990 people)

Age	Dose 1	Dose 2
95+	54,904 (>99%)	51,105 (96.6%)
90-94	165,644 (>99%)	158,325 (>99%)
85-89	327,649 (>99%)	317,409 (>99%)
80-84	543,903 (>99%)	532,272 (>99%)
75-79	817,841 (>99%)	804,498 (>99%)
70-74	1,098,034 (>99%)	1,081,575 (97.9%)
65-69	1,236,958 (98.3%)	1,217,038 (96.7%)
60-64	1,399,646 (97.4%)	1,374,983 (95.7%)
55-59	1,457,082 (93.7%)	1,430,048 (91.9%)
50-54	1,537,613 (98.3%)	1,504,847 (96.2%)
45-49	1,533,798 (91.5%)	1,496,108 (89.2%)
40-44	1,569,676 (96.9%)	1,524,172 (94.1%)
35-39	1,738,856 (94.8%)	1,679,098 (91.5%)
30-34	1,754,830 (91.2%)	1,682,205 (87.4%)
25-29	1,690,876 (88.7%)	1,610,715 (84.5%)
20-24	1,487,882 (86.9%)	1,415,091 (82.6%)
16-19	1,070,782 (89.5%)	1,014,624 (84.9%)
12-15	989,478 (79.5%)	912,476 (73.4%)



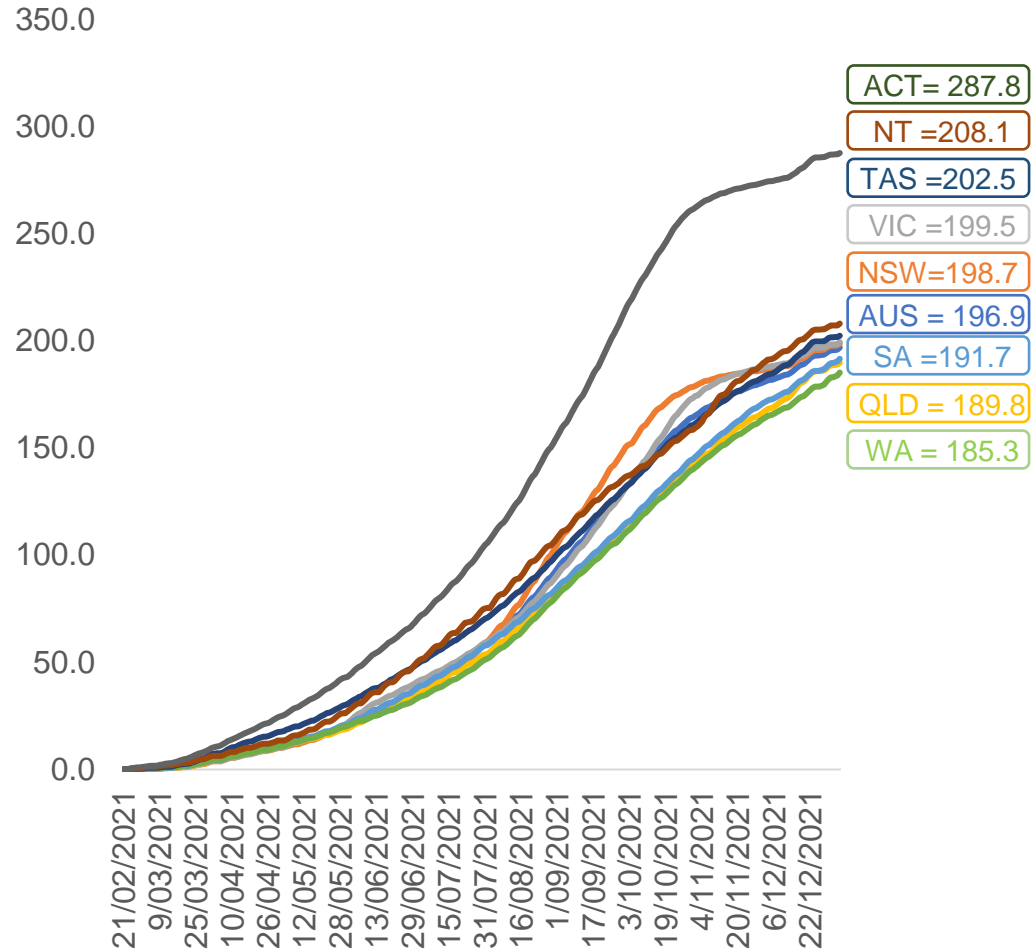
	AUS	ACT	NSW	NT	QLD	SA	TAS	VIC	WA
16 and over - dose 1	19,485,974	347,298	6,239,930	170,175	3,736,330	1,331,752	430,790	5,076,044	1,947,638
16 and over - dose 2	18,894,113	342,485	6,147,054	161,186	3,579,306	1,273,702	410,975	5,000,713	1,794,143
16 and over - population	20,619,959*	344,037	6,565,651	190,571	4,112,707	1,440,400	440,172	5,407,574	2,114,978
16 and over % with dose 1	94.50%	>99%	95.04%	89.30%	90.85%	92.46%	97.87%	93.87%	92.09%
16 and over % with dose 2	91.63%	>99%	93.62%	84.58%	87.03%	88.43%	93.37%	92.48%	84.83%
50 and over - dose 1	8,639,274	134,571	2,784,243	56,773	1,693,273	654,760	215,909	2,184,481	858,192
50 and over - dose 2	8,472,100	133,024	2,751,869	55,086	1,652,731	636,738	210,405	2,157,562	823,037
50 and over - population	8,749,703	127,802	2,807,793	62,280	1,758,855	674,384	220,036	2,211,211	885,370
50 and over % with dose 1	98.74%	>99%	>99%	91.16%	96.27%	97.09%	98.12%	98.79%	96.93%
50 and over % with dose 2	96.83%	>99%	98.01%	88.45%	93.97%	94.42%	95.62%	97.57%	92.96%
70 and over - dose 1	3,007,975	43,991	986,897	11,723	581,231	245,059	79,309	755,805	282,141
70 and over - dose 2	2,945,184	43,343	972,123	11,359	567,607	237,965	77,142	743,789	272,320
70 and over - population	2,934,706	39,946	962,606	12,343	577,767	240,514	77,155	743,519	280,281
70 and over % with dose 1	>99%	>99%	>99%	94.98%	>99%	>99%	>99%	>99%	>99%
70 and over % with dose 2	>99%	>99%	>99%	92.03%	98.24%	98.94%	>99%	>99%	97.16%
12 to 15 - dose 1	989,478	19,706	317,665	9,996	190,141	62,424	20,764	270,757	90,472
12 to 15 - dose 2	912,476	19,068	304,584	8,676	170,061	55,424	18,620	257,800	71,956
12 to 15 - population	1,243,990	19,693	390,330	13,060	270,146	82,747	26,308	308,611	132,869
12 to 15 % with dose 1	79.54%	>99%	81.38%	76.54%	70.38%	75.44%	78.93%	87.73%	68.09%
12 to 15 % with dose 2	73.35%	96.83%	78.03%	66.43%	62.95%	66.98%	70.78%	83.54%	54.16%

\*National population will not equal sum of listed jurisdictions due to a small number of people counted in national population residing in some 'other' territories. Sum of state doses will not add to national total as some records are unable to be geocoded to a State or Territory.

Doses sourced from Australian Immunisation Register, population from ABS ERP June 2020

# Vaccinations by location

Cumulative total doses administered vs eligible state populations\*

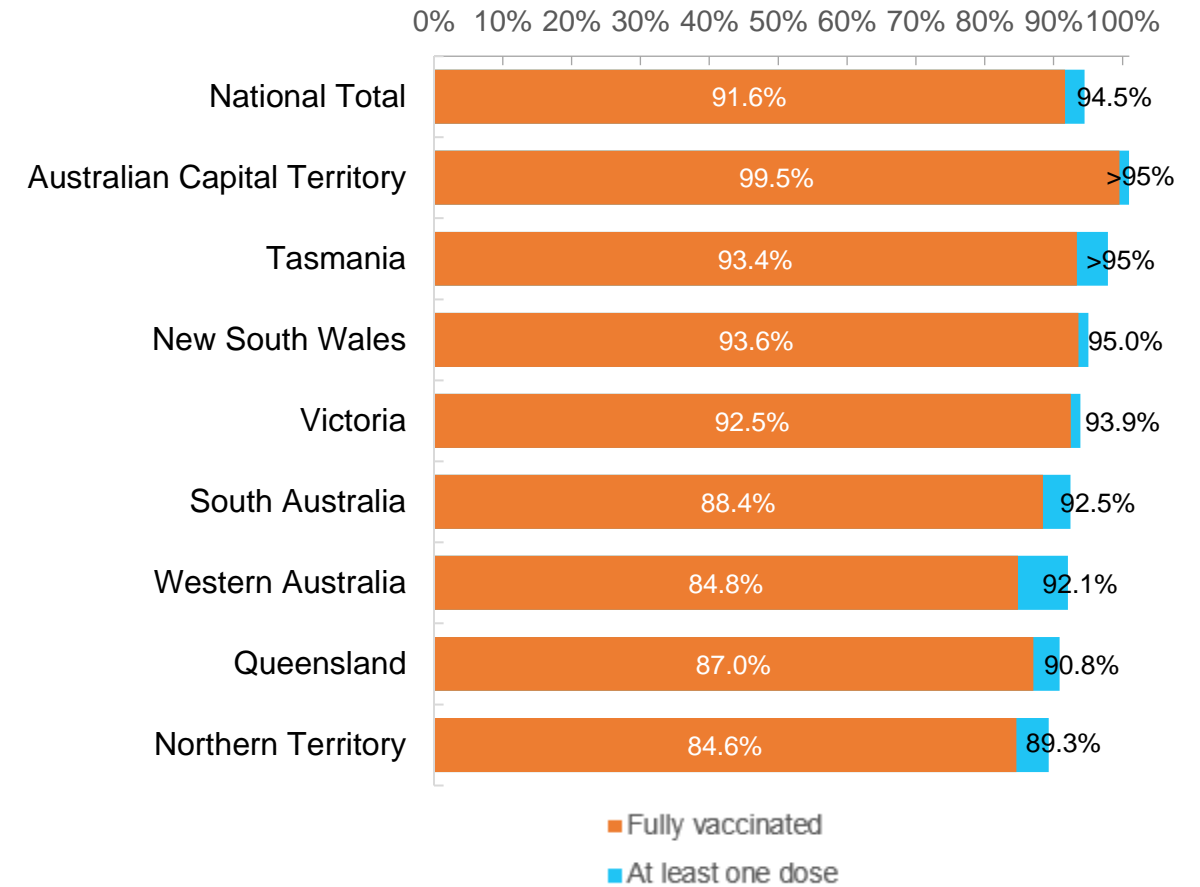


\*Not an indication of percentage vaccinated, numbers will exceed 100 due to multiple doses required per person of the population. All doses are included, including those for the 12-15 cohort, and are based on vaccination provider location.

Data as at:  
04 Jan 2022

Australia's COVID-19  
Vaccine Roadmap

First and Second Doses by state of residence



# Aboriginal and Torres Strait Islander peoples

## Number of people vaccinated

Data as at:  
04 Jan 2022  
Updated weekly

Australia's COVID-19  
Vaccine Roadmap



**416,820**

people over the age of 16  
have had at least one dose

**79.2%**

of people over the age of 16  
have had at least one dose



**377,876**

people over the age of 16  
are fully vaccinated

**71.8%**

of people over the age of 16 are  
fully vaccinated



**42,670  
(59.9%)**

people aged 12-15 years  
have had at least one dose

## 173 Aboriginal community controlled health services (ACCHS)

0#	50	27	41	12	3	21	19
<b>ACT</b>	<b>NSW</b>	<b>NT</b>	<b>QLD</b>	<b>SA</b>	<b>TAS</b>	<b>VIC</b>	<b>WA</b>

Medicare Address State <sup>##</sup>	Individuals Dose 1	Individuals Dose 1 %	Individuals Dose 2	Individuals Dose 2 %
Australian Capital Territory	4,936	90.8%	4,786	88.0%
New South Wales	137,410	86.2%	133,442	83.7%
Northern Territory	39,736	84.5%	34,873	74.1%
Queensland	108,816	76.0%	95,784	66.9%
South Australia	18,762	73.9%	16,409	64.6%
Tasmania	14,411	85.2%	13,385	79.1%
Victoria	35,671	88.6%	34,513	85.7%
Western Australia	42,976	67.5%	33,545	52.7%
Unknown/Other Territories	14,102	56.4%	11,139	44.5%
<b>Totals</b>	<b>416,820</b>	<b>79.2%</b>	<b>377,876</b>	<b>71.8%</b>

Source: Australian Immunisation Register

\*Identifying as Aboriginal and Torres Strait Islander is optional and the estimated population may be under reported.

\*\*Includes all Aboriginal and Torres Strait Islander peoples who have received a vaccination, not limited to those administered in an ACCHS setting

#ACCHS in the ACT are currently operating as a Commonwealth Vaccine Clinics so not included to avoid double counting

##The above table includes all identified Aboriginal and Torres Strait Islander people who are aged 16 and above by their state of residence.

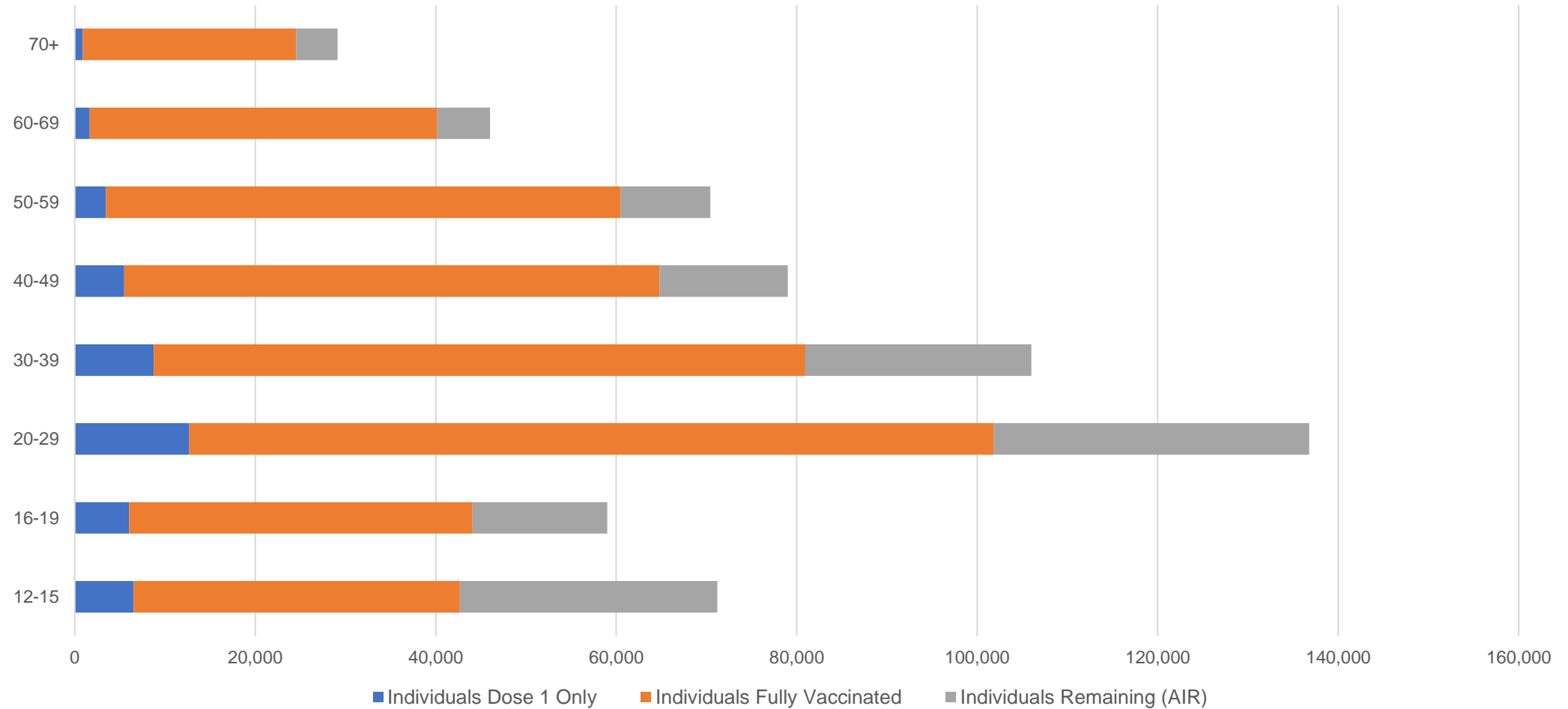


# Aboriginal and Torres Strait Islander peoples

## Number of people vaccinated by age

Data as at:  
04 Jan 2022  
Updated weekly

Australia's COVID-19  
Vaccine Roadmap



Source: Australian Immunisation Register

Data as at:  
04 Jan 2022

# Commonwealth primary care



## Primary care vaccine administration sites

<b>5,674</b>	<b>137</b>	<b>173</b>	<b>3,472</b>
GPs	CVCs	ACCHS	Pharmacies



**24,717,300** total vaccine doses administered  
primary care settings as at 04 January  
**+ 154,339** recorded in the last 24 hours

## Primary care vaccinations by provider type

	Doses administered	Daily increase	7 day increase
General Practice* includes other Commonwealth	21,396,730	82,891	265,989
Pharmacy	3,320,570	71,448	258,776



**173,526** doses administered to persons residing in other territories or with missing residential information

\*General practice includes Commonwealth Vaccination Clinics, Aboriginal Community Health Centres, Royal Flying Doctor Service and other Commonwealth vaccination facilities

Source: Australian Immunisation Register

Data as at:  
04 Jan 2022

# Commonwealth aged care and disability doses administered



**1,173,470** (+ 157 last 24 hours)

Total vaccine doses administered in aged care and disability facilities as at 04 January

Number of doses administered as part of the Commonwealth aged and disability care rollout

**NSW**  
**537,631**  
(+3 daily increase)

**VIC**  
**218,462**  
(+141 daily increase)

**QLD**  
**183,271**  
(+38 daily increase)

**WA**  
**84,627**  
(+9 daily increase)

**TAS**  
**21,095**  
(+5 daily increase)

**SA**  
**78,163**  
(+18 daily increase)

**ACT**  
**15,362**  
(+4 daily increase)

**NT**  
**6,644**  
(+0 daily increase)

**28,215** doses administered to persons residing in other territories or with missing residential information  
Source: Australian Immunisation Register

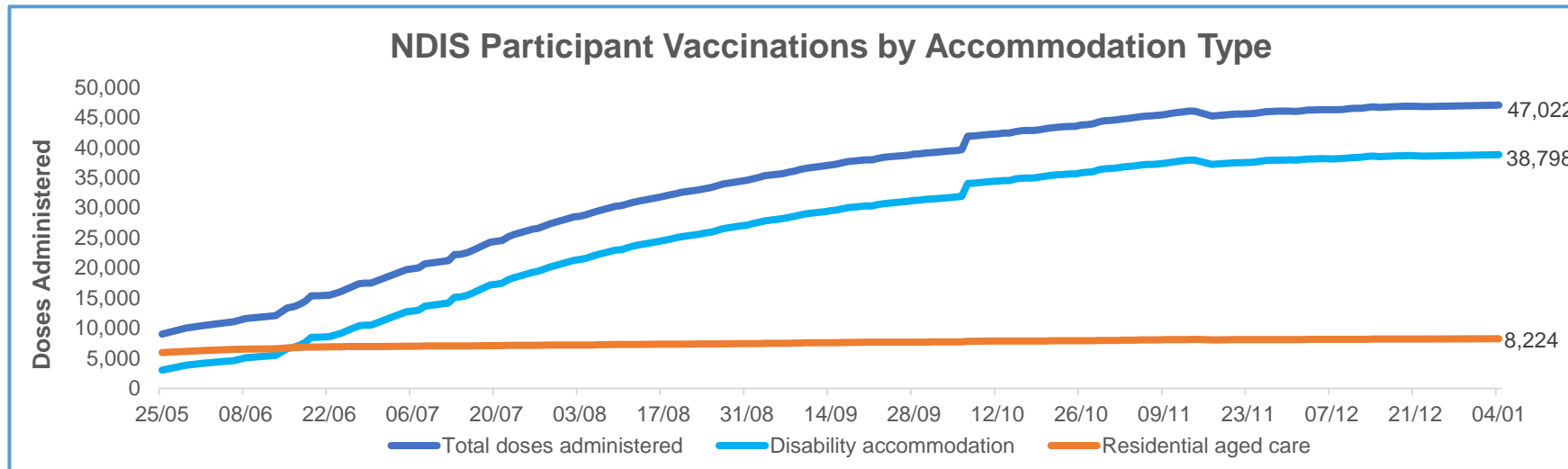
\*Sourced from the Australian Immunisation Register. Includes all persons vaccinated at participating residential aged care, disability and related industry settings.

\*\*State level breakdown indicates the residential location and may not align to the state in which the vaccination occurred.

Data as at:  
4 Jan 2022\*

# Vaccination rate of people with disability and the disability workforce

## Phase 1a – People with disability living in shared accommodation



	Total people with at least one dose	People fully vaccinated	Total number of individuals in cohort	Total doses administered	% People with at least one dose	% People fully vaccinated
NDIS participants living in shared accommodation **	23,865	23,157	27,603	47,022	86.5%	83.9%
NDIS screened workers ***	237,431	232,445	267,670	469,876	88.7%	86.8%



\* Updates are available Monday to Friday on participants, and bi-weekly for workers, numbers may be up to four days old.

\*\* Shared accommodation means two or more people with disability living in shared residential accommodation and NDIS participants living in Residential Aged Care accommodation as per the eligibility criteria of Phase 1a. The number of residents changes over time and refinement of methodology can lead to corrections in totals.

\*\*\* Total number of workers within the NDIS Commission Worker Screening database who have ever been successfully screened and linked to an NDIS registered provider or participant.

Source: Linkage between National Disability Insurance Agency data, NDIS Quality and Safeguards Commission data and the Australian Immunisation Register.

## Residential aged care vaccination rollout

### Residential aged care facilities status

**100%** Commonwealth facilities visited (2,591 planned sites)

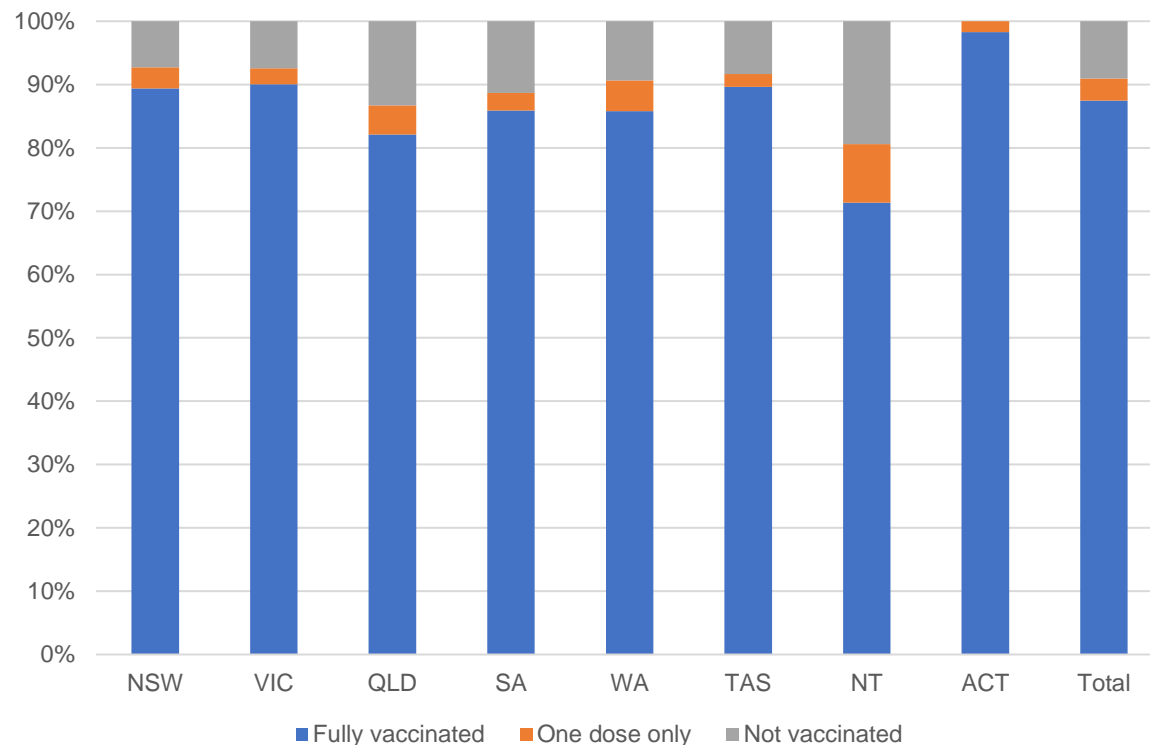
**163,181** People fully vaccinated

**169,634** People with at least one dose

Australia's COVID-19 Vaccine Roadmap

Data as at:  
04 Jan 2022

### Aged care resident vaccinations



### Aged care worker vaccinations

Jurisdictions	Total workers with at least one dose	Workers fully vaccinated	% Workers with at least one dose	% Workers fully vaccinated
NSW	79,192	79,155	99.5%	99.4%
VIC	71,040	71,039	99.2%	99.2%
QLD	48,834	48,810	100.0%	99.9%
SA	27,522	27,452	99.4%	99.1%
WA	23,755	23,678	100.0%	99.7%
TAS	7,589	7,545	100.0%	99.4%
NT	851	850	100.0%	99.9%
ACT	2,993	2,993	100.0%	100.0%
Total	261,776	261,522	99.5%	99.4%

Source: My Aged Care Portal staff vaccination progress

\*\*Resident vaccination information is reported manually by service providers

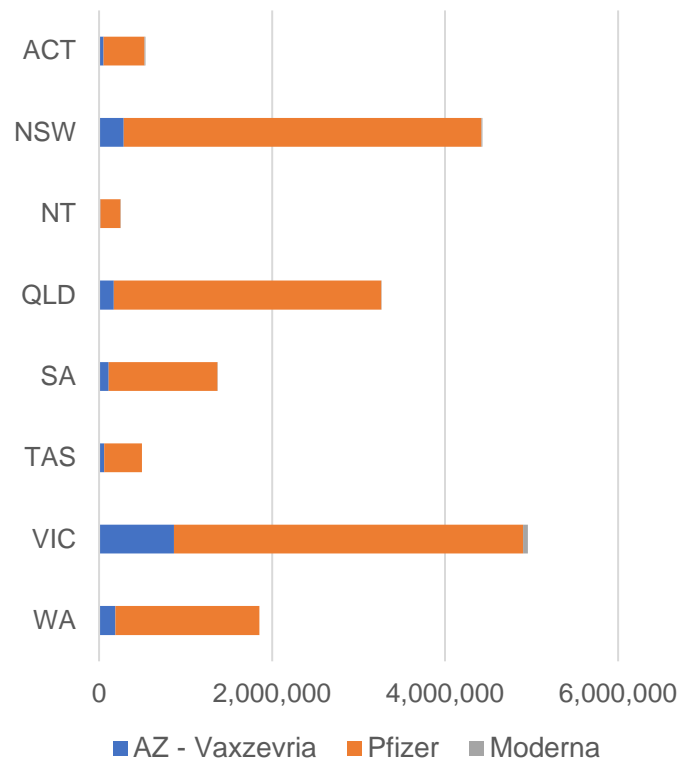
\*Status updates are provided by facilities at least once per week. Reporting is updated Monday to Friday to encompass different facility updates being made on different days.

Data is sourced directly from Aged Care Service Providers and is not drawn or closely aligned with data from AIR due to inconsistencies and potential lags in uploading of records.

Data as at:  
04 Jan 2022

# Jurisdiction administered

Total vaccine doses administered in State and Territory clinics as at 04 January



**17,153,260** total vaccine doses administered  
in State and Territory clinics as at 04 January  
+ **58,001** recorded in the last 24 hours  
+ **229,286** recorded in the last 7 days

**NSW**  
**4,432,098**  
(+9,418 daily increase)

**VIC**  
**4,958,844**  
(+18,405 daily increase)

**QLD**  
**3,263,816**  
(+2,794 daily increase)

**WA**  
**1,854,514**  
(+14,750 daily increase)

**TAS**  
**493,299**  
(+27 daily increase)

**SA**  
**1,367,491**  
(+9,760 daily increase)

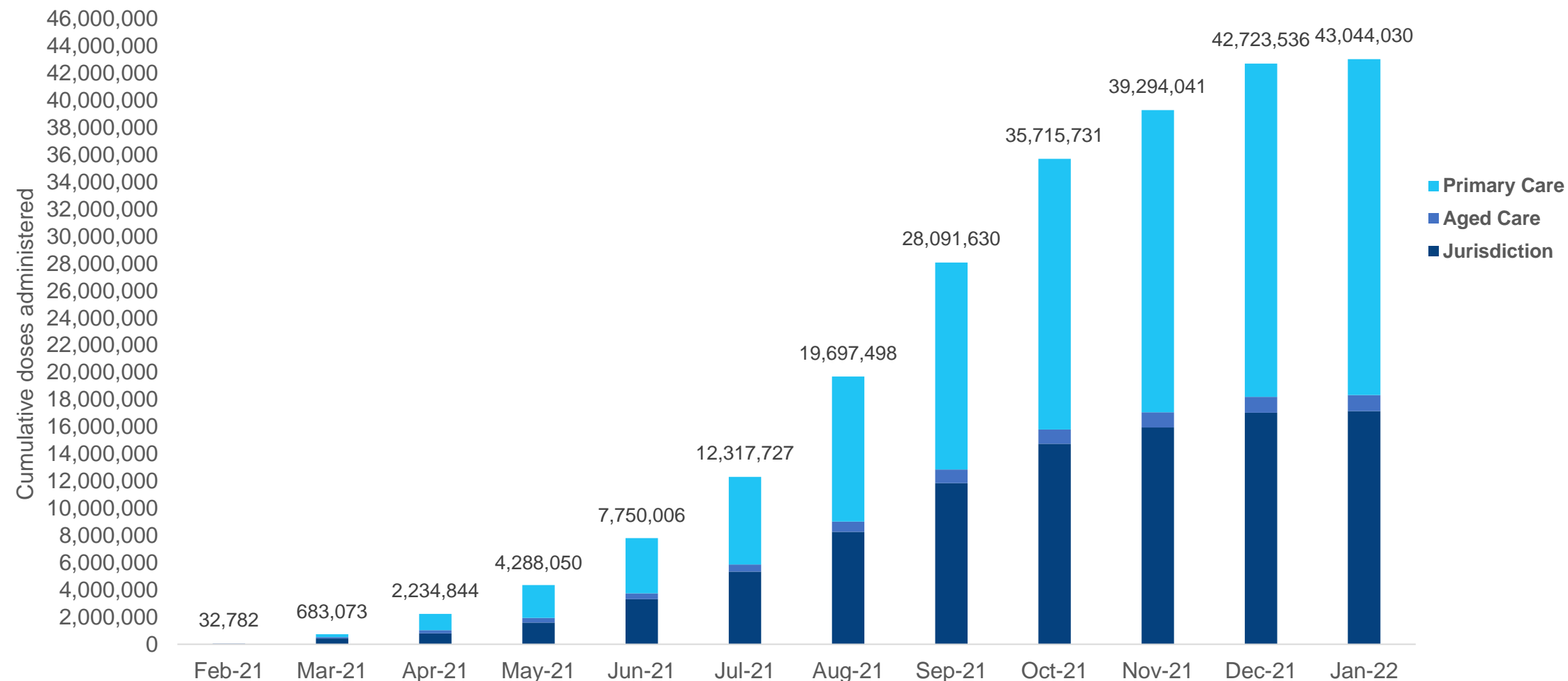
**ACT**  
**535,228**  
(+1,588 daily increase)

**NT**  
**247,970**  
(+1,259 daily increase)

\*Sourced from the Australian Immunisation Register and self-reported data. Numbers are calculated as difference in daily cumulative reported numbers to allow for historical corrections in all self-reported data sources.

# Cumulative doses administered by channel

Data as at:  
04 Jan 2022



Source: Australian Immunisation Register

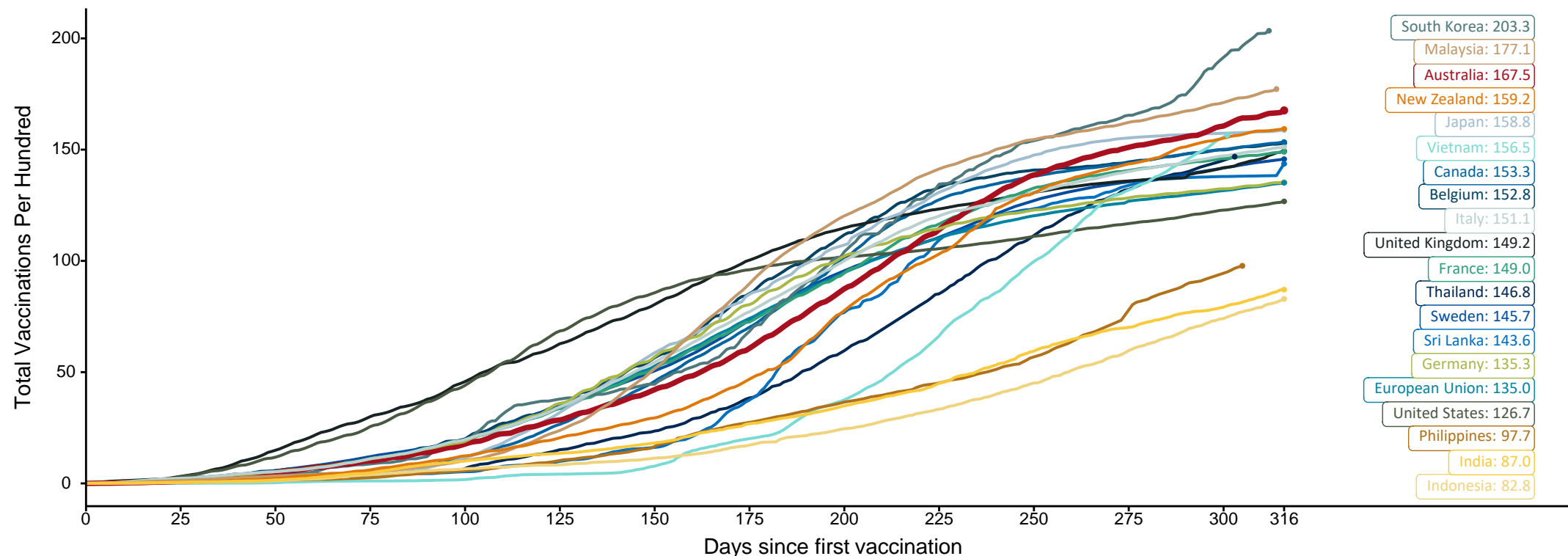


# Doses at equivalent stages of rollout (Day 316)

Data as at:  
04 Jan 2022

The x-axis is truncated at the length of Australia's vaccination program. Countries with intermittent reporting have had their doses per 100 imputed to Australia's current stage of rollout. Israel excluded as it is beyond scale of the graph

Cumulative doses administered (04 Jan): **43,044,030**



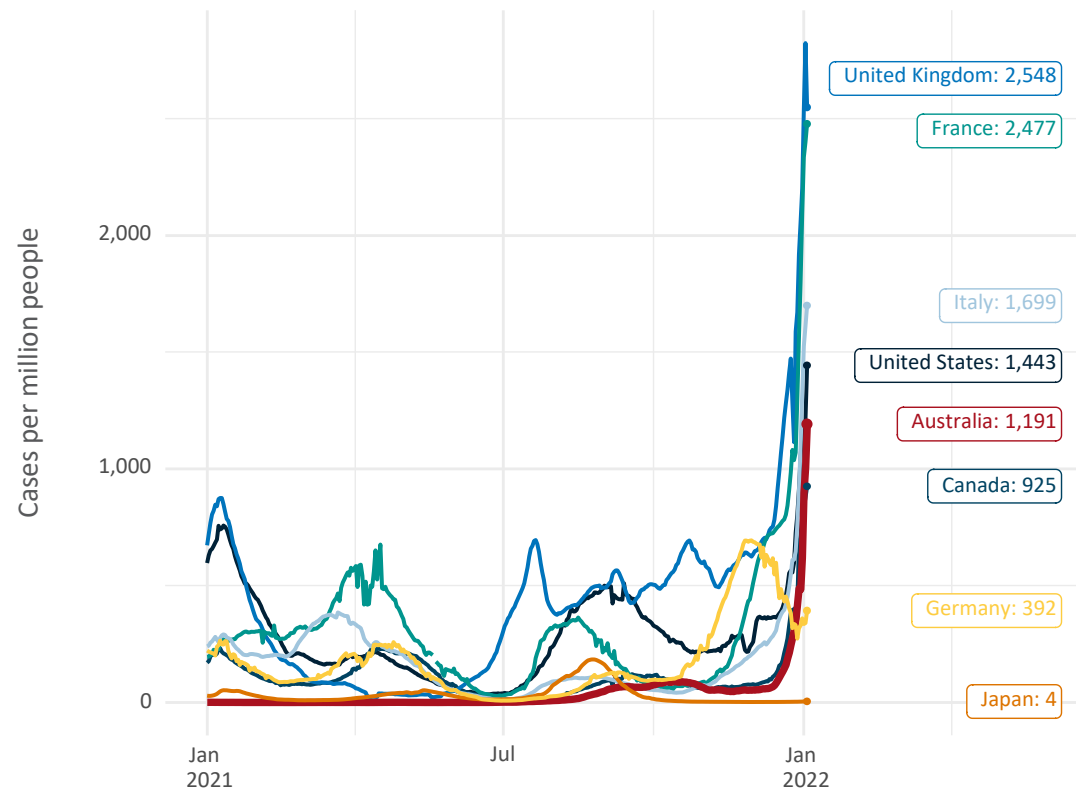
Note: From 15 September 2021, data for Australia includes all doses administered to people 12 and over. Prior to 15 September, data was for 16 and over  
Due to data revisions, Singapore has been removed from the chart  
Source: Department of Health (Australia), Our World in Data (international)  
Latest data: 04 January



# International data – COVID-19

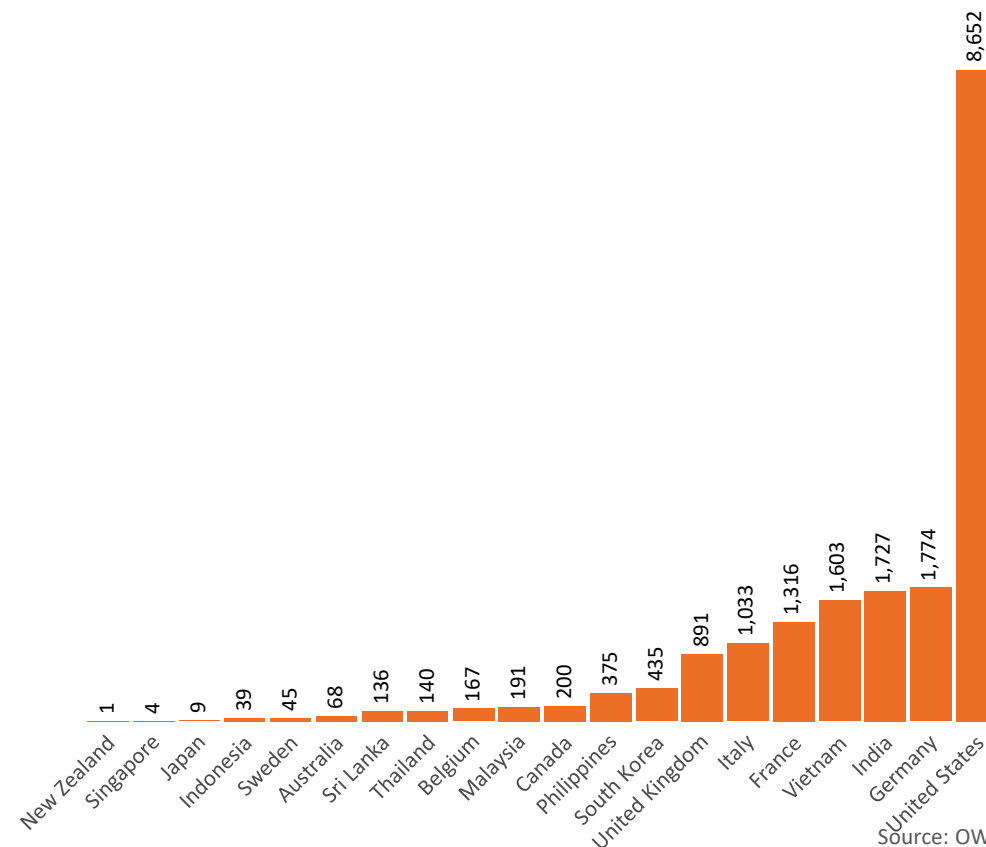
Data as at:  
04 Jan 2022

New daily cases per million in 2021, Australia and G7 countries  
Smoothed - 7 day average



Source: OWID  
Data downloaded: 05 Jan 2022 07:57  
Latest data: 03 Jan 2022

COVID-19 deaths in past 7 days - Australia and select countries

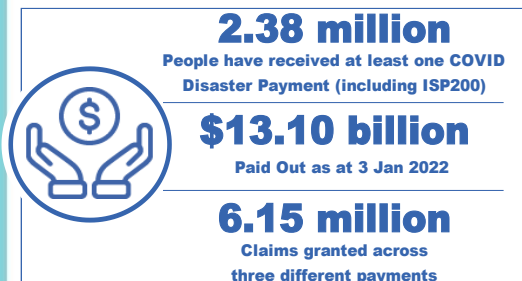


Source: OWID  
Data downloaded: 05 Jan 2022 07:57  
Latest data: 03 Jan 2022

# Pandemic Response Payments

Australia's COVID-19  
Vaccine Roadmap

Data as at midnight:  
3 Jan 2022



<b>COVID Disaster Payment:</b>	5.89 million claims received - 2.19 million individuals paid a total of \$12.59 billion.
<b>\$200 Income Support Payment:</b>	353,000 claims received - 183,000 individuals paid a total of \$268.91 million.
<b>Pandemic Leave Disaster Payment:</b>	197,000 claims received - 151,000 individuals paid a total of \$236.33 million.



## COVID Disaster Payment

assisting during a lockdown  
event in a Commonwealth  
hotspot.

## Income Support Payment \$200

for income support  
recipients who lost at  
least 8 hours of work.

## Pandemic Leave Disaster Payment

for those who have to  
self-isolate, quarantine  
or care.

For more information visit:  
[servicesaustralia.gov.au](https://servicesaustralia.gov.au)

## COVID-19 DISASTER PAYMENTS

### Victoria

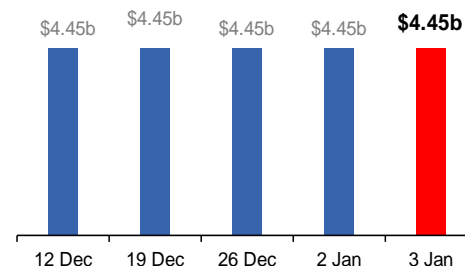
Lockdown (#6) from 6 Aug to 28 Oct  
Claiming period ended 9 Dec

**745,000 people have received at least  
one COVID Disaster Payment.**

**\$4.45b paid out as at 3 Jan 2022.**

**\$6,000 paid in initial and reoccurring  
payments in the week ending  
2 Jan 2022.**

Cumulative payments made by State since  
activation on 8 Jun 2021.



### Northern Territory

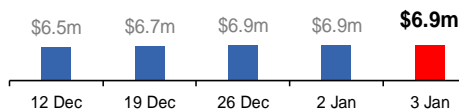
Lockdown (#3) from 16 Nov to 22 Nov  
Claiming period ends 27 Dec

**7,500 people have received at least one  
COVID Disaster Payment.**

**\$6.9m paid out as at 3 Jan 2022.**

**\$39,000 paid in initial payments in the  
week ending 2 Jan 2022.**

Cumulative payments made by Territory since  
activation on 25 Aug 2021.



### New South Wales

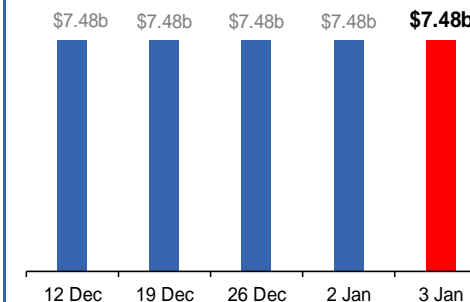
Lockdown from 24 Jun to 10 Oct  
Claiming period ended 27 Nov

**1.08m people have received at least  
one COVID Disaster Payment.**

**\$7.48b paid out as at 3 Jan 2022.**

**\$2,000 paid in initial and reoccurring  
payments in the week ending  
2 Jan 2022.**

Cumulative payments made by State since  
activation on 1 Jul 2021.



### Australian Capital Territory

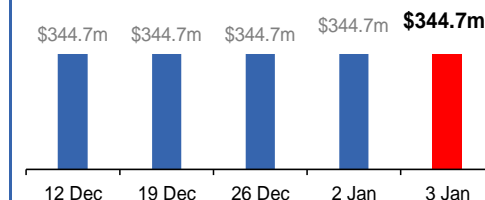
Lockdown from 12 Aug to 14 Oct  
Claiming period ended 25 Nov

**65,000 people have received at least  
one COVID Disaster Payment.**

**\$344.7m paid out as at 3 Jan 2022.**

**\$0 paid in initial and reoccurring  
payments in the week ending  
2 Jan 2022.**

Cumulative payments made by Territory since  
activation on 20 Aug 2021.



Data as at midnight:  
3 Jan 2022

# Pandemic Response Payments (continued)

## COVID-19 DISASTER PAYMENTS

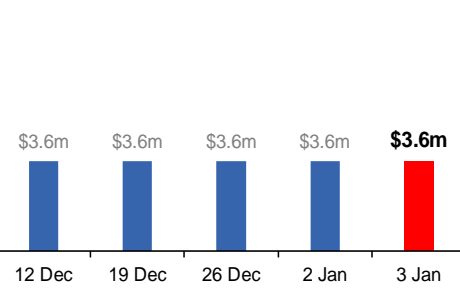
### Tasmania

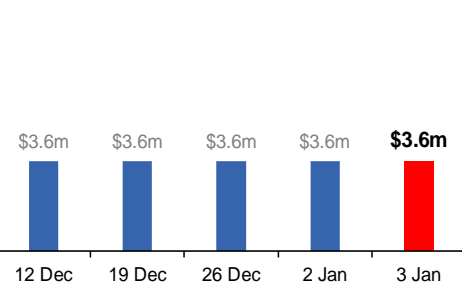
Lockdown from 15 Oct to 18 Oct  
Claiming period ended 12 Nov

**6,900 people have received at least one COVID Disaster Payment.**

**\$3.6m paid out as at 3 Jan 2022.**

**\$0 paid in initial and reoccurring payments in the week ending 2 Jan 2022.**

 Cumulative payments made by State since activation on 22 Oct 2021.




### Queensland

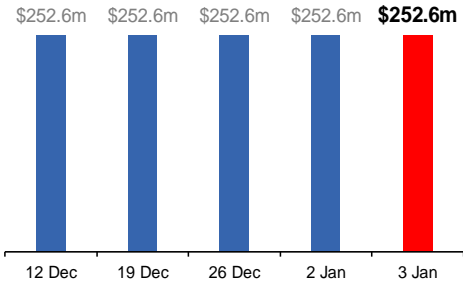
Lockdown from 31 Jul to 11 Aug  
Claiming period ended 28 Aug

**196,000 people have received at least one COVID Disaster Payment.**

**\$252.6m paid out as at 3 Jan 2022.**

**\$0 paid in initial and reoccurring payments in the week ending 2 Jan 2022.**

 Cumulative payments made by State since activation on 7 Aug 2021.




### South Australia

Lockdown from 21 to 27 Jul  
Claiming period ended 17 Aug

**86,000 people have received at least one COVID Disaster Payment.**

**\$48.2m paid out as at 3 Jan 2022.**

**\$0 paid in initial and reoccurring payments in the week ending 2 Jan 2022.**

 Cumulative payments made by State since activation on 28 Jul 2021.

