



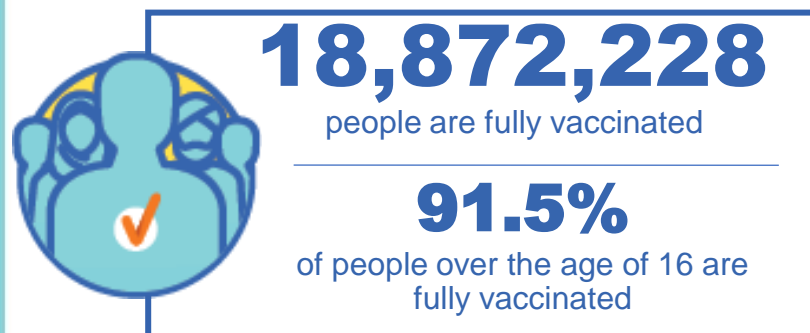
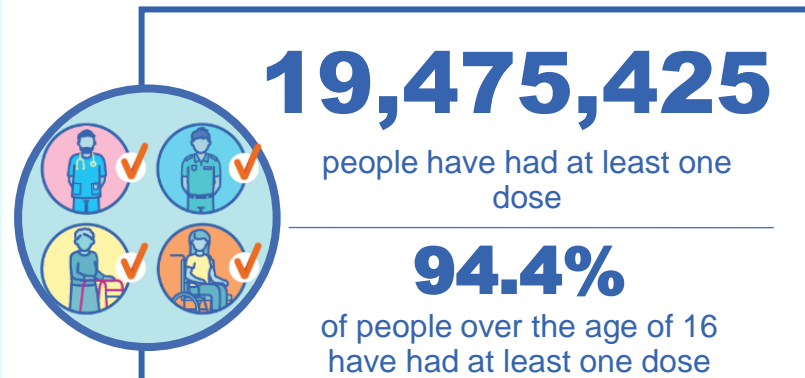
**Australian Government**  
**Operation COVID Shield**

# COVID-19 Vaccine Rollout

04 January 2022

Data as at:  
03 Jan 2022

## Total vaccine doses



**42,831,533** total vaccine  
doses administered nationally as at 03 January

**+44,533** recorded in the last 24 hours

**NSW**  
**13,770,397**  
(+11,666 daily  
increase)

**VIC**  
**11,348,477**  
(+8,449 daily  
increase)

**QLD**  
**8,276,257**  
(+6,822 daily  
increase)

**WA**  
**4,131,022**  
(+10,492 daily  
increase)

**TAS**  
**941,193**  
(+411 daily  
increase)

**SA**  
**2,899,672**  
(+5,904 daily  
increase)

**ACT**  
**1,042,454**  
(+516 daily  
increase)

**NT**  
**422,061**  
(+273 daily  
increase)

\*Administration state breakdown indicates state in which a vaccine was administered

\*\*Overall dose count includes instances of more than two doses per person in a small number of cases.

Source: Australian Immunisation Register

Data as at:  
03 Jan 2022

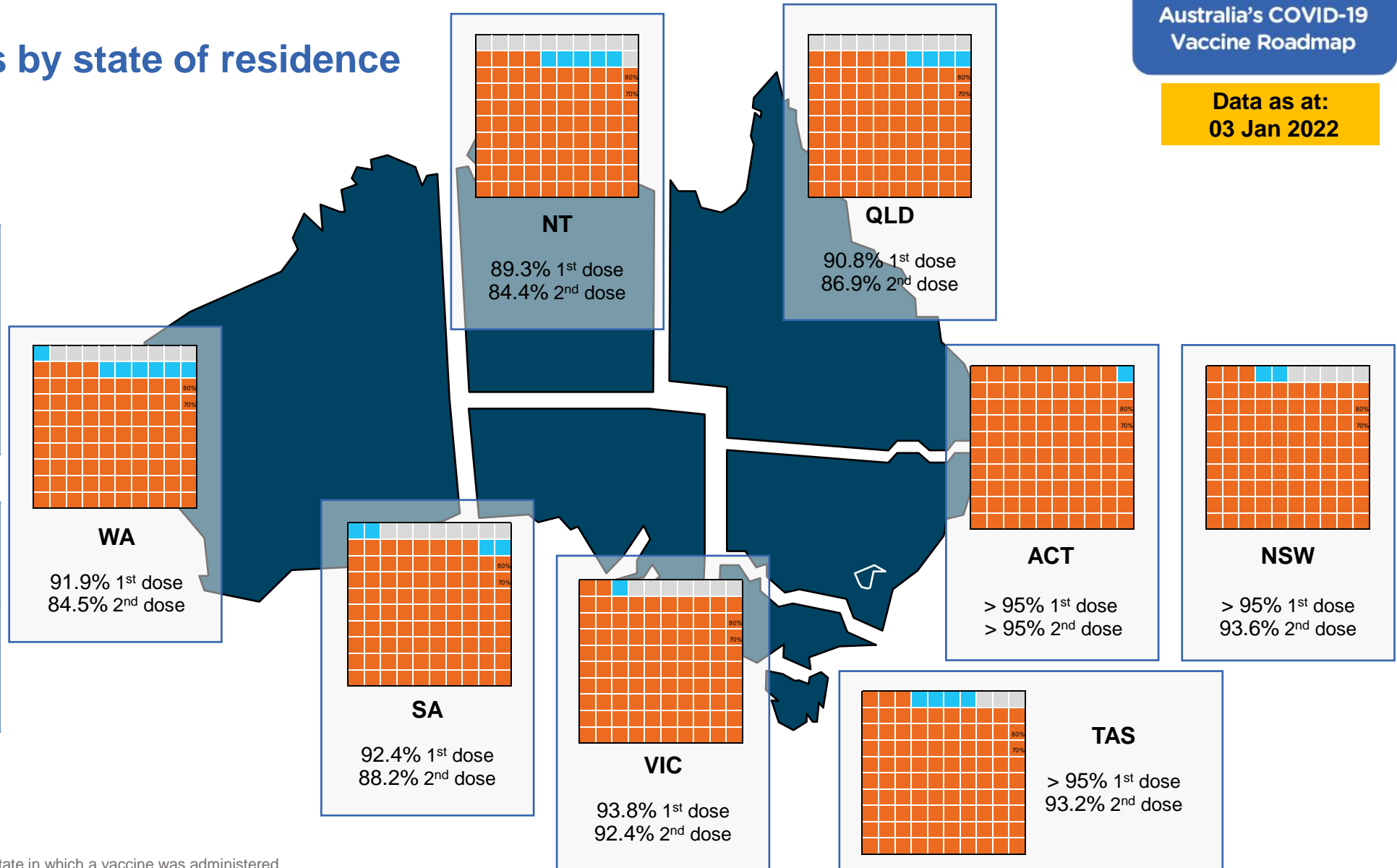
## Vaccinations by state of residence

### First doses

Age	Today	4 weeks ago	8 weeks ago
16+	94.4%	93.2%	89.9%
50+	>95%	>95%	>95%
70+	>95%	>95%	>95%

### Fully vaccinated

Age	Today	4 weeks ago	8 weeks ago
16+	91.5%	88.6%	81.8%
50+	>95%	>95%	89.9%
70+	>95%	>95%	94.4%



\*Residential state may differ from the state in which a vaccine was administered

## Commonwealth and Jurisdiction vaccine doses administered

Data as at:  
03 Jan 2022



**42,831,533** total vaccine  
doses administered nationally as at 03 January  
**+ 44,533** recorded in the last 24 hours



**17,095,259**  
doses administered by state  
and territory facilities  
**+ 19,608**  
recorded in the last 24 hours



**25,736,274**  
doses administered by  
commonwealth facilities  
**+ 24,925**  
recorded in the last 24 hours  
**24,562,961** total vaccine doses  
administered in primary care settings  
**1,173,313** total vaccine doses  
administered in aged care and disability  
settings

NSW	Jurisdictions	Commonwealth
Cumulative	4,422,680	9,347,717
Daily increase	4,968	6,698

VIC	Jurisdictions	Commonwealth
Cumulative	4,940,439	6,408,038
Daily increase	204	8,245

QLD	Jurisdictions	Commonwealth
Cumulative	3,261,022	5,015,235
Daily increase	1,344	5,478

WA	Jurisdictions	Commonwealth
Cumulative	1,839,764	2,291,258
Daily increase	7,755	2,737

TAS	Jurisdictions	Commonwealth
Cumulative	493,272	447,921
Daily increase	0	411

SA	Jurisdictions	Commonwealth
Cumulative	1,357,731	1,541,941
Daily increase	5,005	899

ACT	Jurisdictions	Commonwealth
Cumulative	533,640	508,814
Daily increase	233	283

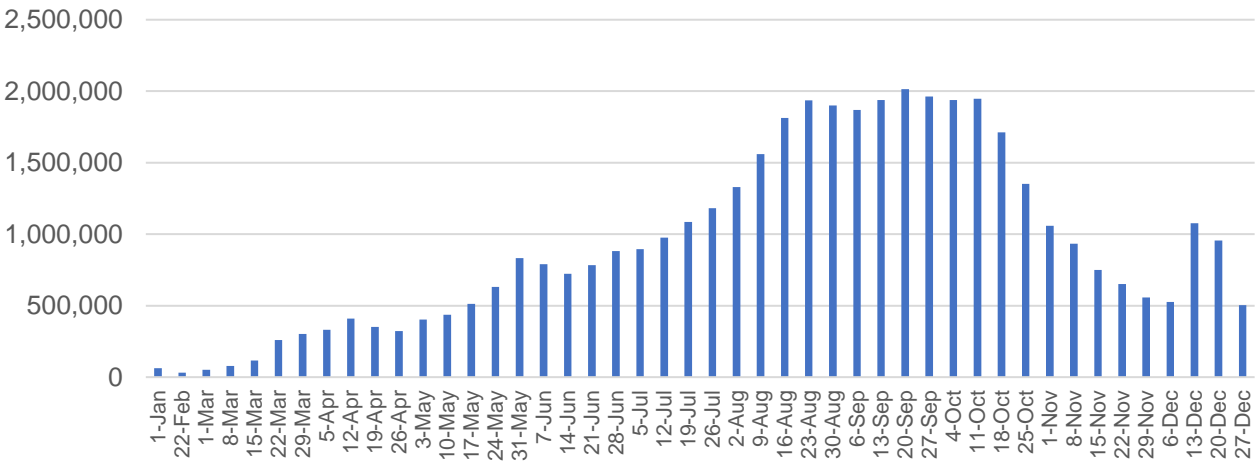
NT	Jurisdictions	Commonwealth
Cumulative	246,711	175,350
Daily increase	99	174

# Vaccine milestone charts

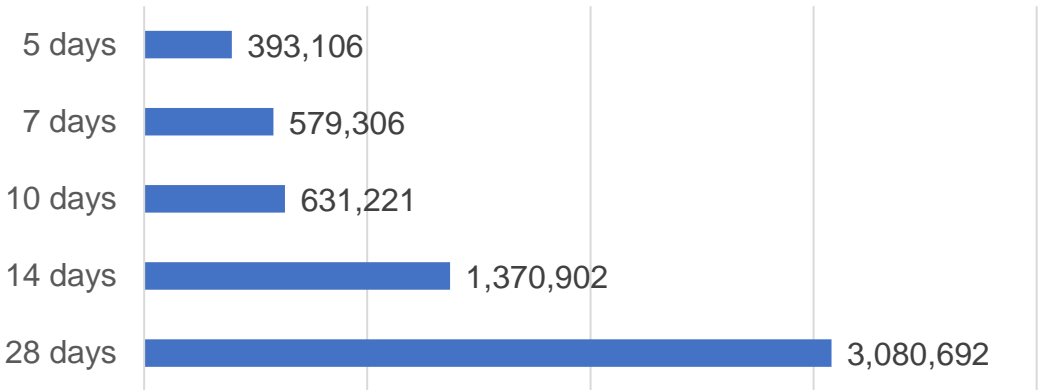
Data as at:  
03 Jan 2022

Australia's COVID-19  
Vaccine Roadmap

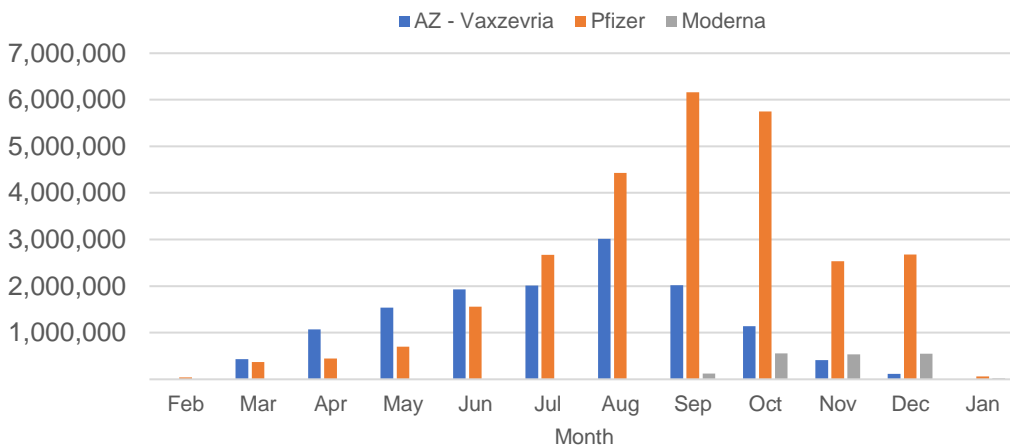
Doses Administered by Week



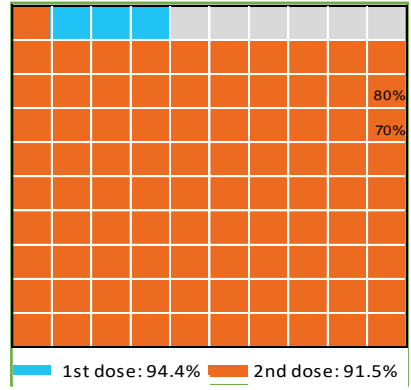
Doses Reported



Doses by administration month and vaccine type



Eligible population percentage coverage



\*Sourced from the Australian Immunisation Register.

\*Each square represents 1% of the national population. Squares are filled as milestones are achieved.

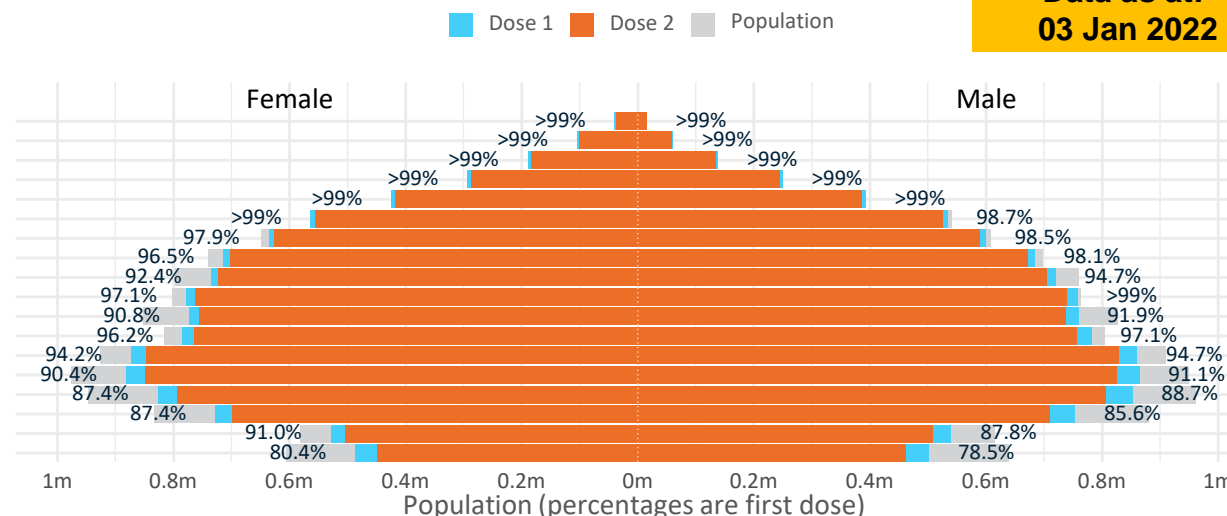
# Doses by age and sex

First and second doses by age and sex

Australia's COVID-19  
Vaccine Roadmap

Data as at:  
03 Jan 2022

Age	Dose 1	Dose 2
95+	54,844 (>99%)	51,039 (96.5%)
90-94	165,566 (>99%)	158,188 (>99%)
85-89	327,473 (>99%)	317,131 (>99%)
80-84	543,659 (>99%)	531,864 (>99%)
75-79	817,531 (>99%)	803,870 (>99%)
70-74	1,097,706 (>99%)	1,080,945 (97.8%)
65-69	1,236,587 (98.3%)	1,216,279 (96.7%)
60-64	1,399,109 (97.4%)	1,373,971 (95.6%)
55-59	1,456,593 (93.6%)	1,429,037 (91.9%)
50-54	1,536,960 (92.2%)	1,503,505 (96.1%)
45-49	1,533,289 (91.4%)	1,494,772 (89.1%)
40-44	1,568,713 (96.8%)	1,522,315 (94.0%)
35-39	1,737,798 (94.7%)	1,676,920 (91.4%)
30-34	1,753,791 (91.2%)	1,679,835 (87.3%)
25-29	1,689,465 (88.6%)	1,607,939 (84.3%)
20-24	1,486,778 (86.8%)	1,412,427 (82.5%)
16-19	1,069,563 (89.4%)	1,012,191 (84.6%)
12-15	988,414 (79.5%)	910,295 (73.2%)

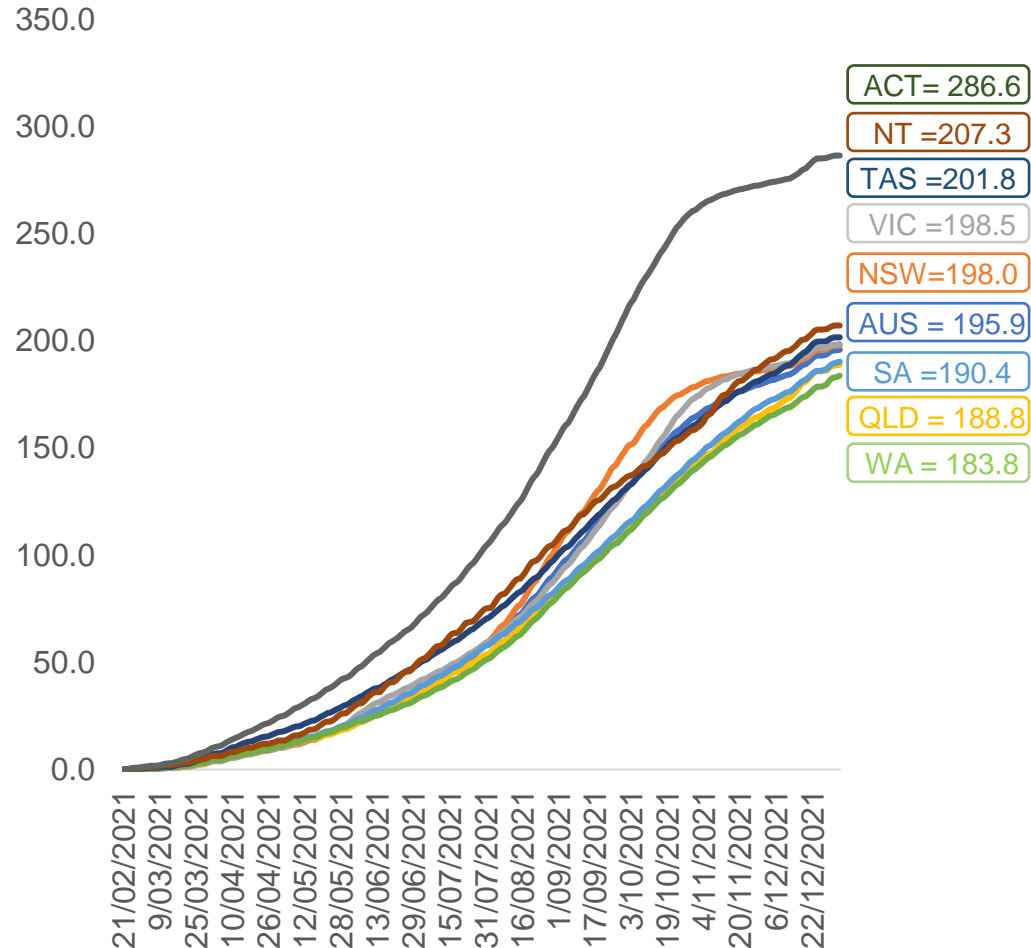


	AUS	ACT	NSW	NT	QLD	SA	TAS	VIC	WA
16 and over - dose 1	19,475,425	347,206	6,238,638	170,099	3,733,637	1,330,407	430,554	5,074,977	1,943,045
16 and over - dose 2	18,872,228	342,343	6,145,505	160,918	3,572,010	1,270,369	410,198	4,998,832	1,786,901
16 and over - population	20,619,959*	344,037	6,565,651	190,571	4,112,707	1,440,400	440,172	5,407,574	2,114,978
16 and over % with dose 1	94.45%	>99%	95.02%	89.26%	90.78%	92.36%	97.81%	93.85%	91.87%
16 and over % with dose 2	91.52%	>99%	93.60%	84.44%	86.85%	88.20%	93.19%	92.44%	84.49%
50 and over - dose 1	8,636,028	134,539	2,783,588	56,757	1,692,385	654,369	215,846	2,183,950	857,216
50 and over - dose 2	8,465,829	132,979	2,751,151	55,023	1,650,657	635,725	210,188	2,156,797	821,403
50 and over - population	8,749,703	127,802	2,807,793	62,280	1,758,855	674,384	220,036	2,211,211	885,370
50 and over % with dose 1	98.70%	>99%	>99%	91.13%	96.22%	97.03%	98.10%	98.77%	96.82%
50 and over % with dose 2	96.76%	>99%	97.98%	88.35%	93.85%	94.27%	95.52%	97.54%	92.78%
70 and over - dose 1	3,006,779	43,976	986,580	11,715	580,958	244,925	79,274	755,542	281,914
70 and over - dose 2	2,943,037	43,316	971,752	11,343	566,975	237,666	77,059	743,437	271,885
70 and over - population	2,934,706	39,946	962,606	12,343	577,767	240,514	77,155	743,519	280,281
70 and over % with dose 1	>99%	>99%	>99%	94.91%	>99%	>99%	>99%	>99%	>99%
70 and over % with dose 2	>99%	>99%	>99%	91.90%	98.13%	98.82%	>99%	>99%	97.00%
12 to 15 - dose 1	988,414	19,707	317,667	9,979	189,936	62,115	20,756	270,775	89,903
12 to 15 - dose 2	910,295	19,052	304,526	8,647	169,399	54,923	18,578	257,463	71,410
12 to 15 - population	1,243,990	19,693	390,330	13,060	270,146	82,747	26,308	308,611	132,869
12 to 15 % with dose 1	79.46%	>99%	81.38%	76.41%	70.31%	75.07%	78.90%	87.74%	67.66%
12 to 15 % with dose 2	73.18%	96.75%	78.02%	66.21%	62.71%	66.37%	70.62%	83.43%	53.74%

\*National population will not equal sum of listed jurisdictions due to a small number of people counted in national population residing in some 'other' territories. Due to data revisions Singapore has been removed. Sum of state doses will not add to national total as some records are unable to be geocoded to a State or Territory.  
Doses sourced from Australian Immunisation Register, population from ABS ERP June 2020

# Vaccinations by location

Cumulative total doses administered vs eligible state populations\*

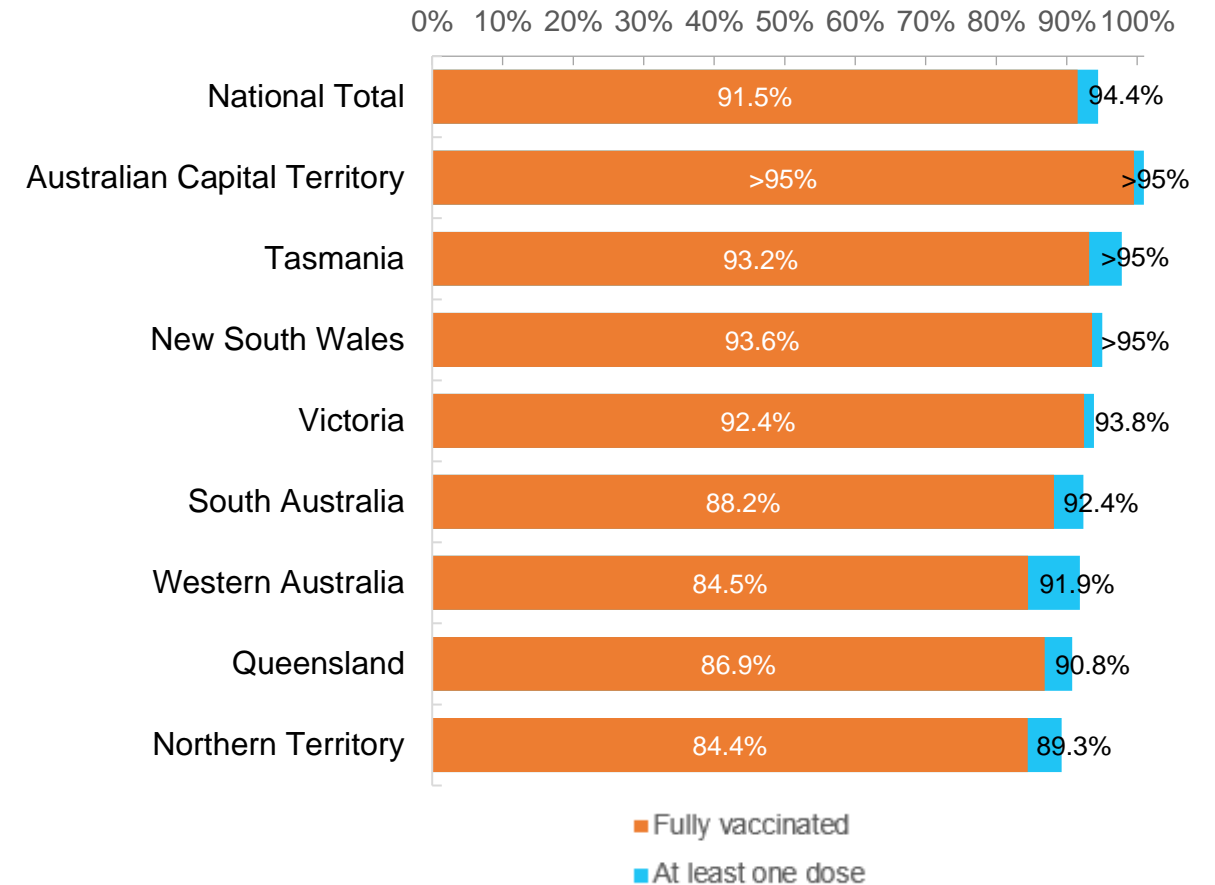


\*Not an indication of percentage vaccinated, numbers will exceed 100 due to multiple doses required per person of the population. All doses are included, including those for the 12-15 cohort, and are based on vaccination provider location.

Data as at:  
03 Jan 2022

Australia's COVID-19  
Vaccine Roadmap

First and Second Doses by state of residence



# Aboriginal and Torres Strait Islander peoples

## Number of people vaccinated

Data as at:  
28 Dec 2021  
Updated weekly

Australia's COVID-19  
Vaccine Roadmap



**415,514**

people over the age of 16  
have had at least one dose

**78.8%**

of people over the age of 16  
have had at least one dose



**374,181**

people over the age of 16  
are fully vaccinated

**71.1%**

of people over the age of 16 are  
fully vaccinated



**42,469  
(59.4%)**

people aged 12-15 years  
have had at least one dose

## 173 Aboriginal community controlled health services (ACCHS)

0#	50	27	41	12	3	21	19
<b>ACT</b>	<b>NSW</b>	<b>NT</b>	<b>QLD</b>	<b>SA</b>	<b>TAS</b>	<b>VIC</b>	<b>WA</b>

Medicare Address State <sup>##</sup>	Individuals Dose 1	Individuals Dose 1 %	Individuals Dose 2	Individuals Dose 2 %
Australian Capital Territory	4,953	90.7%	4,800	87.9%
New South Wales	137,647	86.2%	133,561	83.7%
Northern Territory	39,591	84.2%	34,497	73.4%
Queensland	108,070	75.4%	93,797	65.4%
South Australia	18,694	73.6%	16,211	63.8%
Tasmania	14,416	84.9%	13,336	78.5%
Victoria	35,757	88.6%	34,561	85.6%
Western Australia	42,332	66.4%	32,420	50.8%
Unknown/Other Territories	14,054	56.0%	10,998	43.8%
<b>Totals</b>	<b>415,514</b>	<b>78.8%</b>	<b>374,181</b>	<b>71.0%</b>

Source: Australian Immunisation Register

\*Identifying as Aboriginal and Torres Strait Islander is optional and the estimated population may be under reported.

\*\*Includes all Aboriginal and Torres Strait Islander peoples who have received a vaccination, not limited to those administered in an ACCHS setting

#ACCHS in the ACT are currently operating as a Commonwealth Vaccine Clinics so not included to avoid double counting

##The above table includes all identified Aboriginal and Torres Strait Islander people who are aged 16 and above by their state of residence.

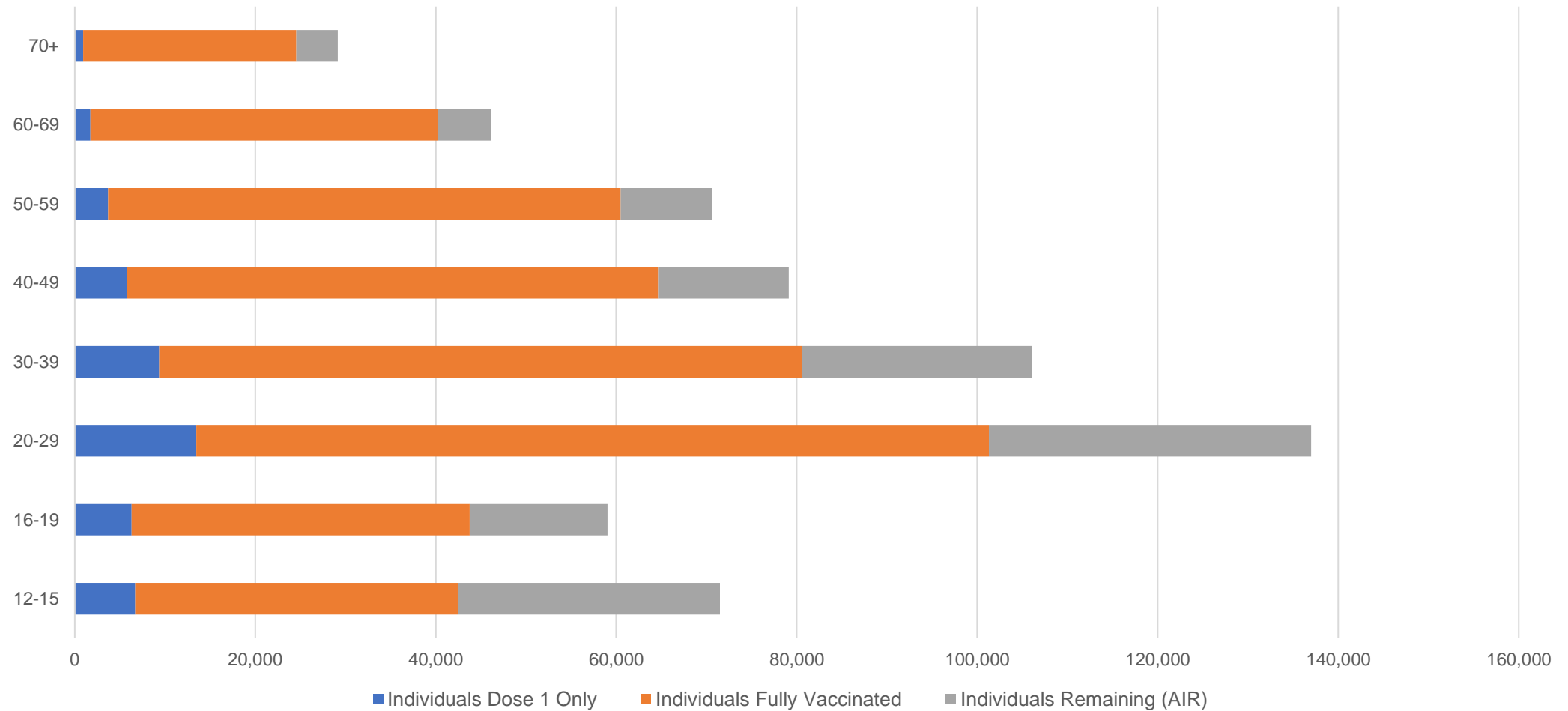


# Aboriginal and Torres Strait Islander peoples

## Number of people vaccinated by age

Data as at:  
28 Dec 2021  
Updated weekly

Australia's COVID-19  
Vaccine Roadmap



Source: Australian Immunisation Register

Data as at:  
03 Jan 2022

# Commonwealth primary care



## Primary care vaccine administration sites

<b>5,674</b>	<b>137</b>	<b>173</b>	<b>3,472</b>
GPs	CVCs	ACCHS	Pharmacies



**24,562,961** total vaccine doses administered  
primary care settings as at 03 January  
**+ 24,915** recorded in the last 24 hours

## Primary care vaccinations by provider type

	Doses administered	Daily increase	7 day increase
General Practice* includes other Commonwealth	21,313,839	11,383	191,958
Pharmacy	3,249,122	13,532	200,901



**173,774** doses administered to persons residing in other territories or with missing residential information

\*General practice includes Commonwealth Vaccination Clinics, Aboriginal Community Health Centres, Royal Flying Doctor Service and other Commonwealth vaccination facilities

Source: Australian Immunisation Register

Data as at:  
03 Jan 2022

# Commonwealth aged care and disability doses administered



**1,173,313** (+ 10 last 24 hours)

Total vaccine doses administered in aged care and disability facilities as at 03 January

Number of doses administered as part of the Commonwealth aged and disability care rollout

**NSW**  
**537,628**  
(-6# daily  
increase)

**VIC**  
**218,321**  
(+5 daily  
increase)

**QLD**  
**183,233**  
(+7 daily  
increase)

**WA**  
**84,618**  
(+4 daily  
increase)

**TAS**  
**21,090**  
(+1 daily  
increase)

**SA**  
**78,145**  
(+6 daily  
increase)

**ACT**  
**15,358**  
(+5 daily  
increase)

**NT**  
**6,644**  
(+0 daily  
increase)

**28,276**

doses administered to persons  
residing in other territories or with  
missing residential information

Source: Australian Immunisation Register

\*Sourced from the Australian Immunisation Register. Includes all persons vaccinated at participating residential aged care, disability and related industry settings.

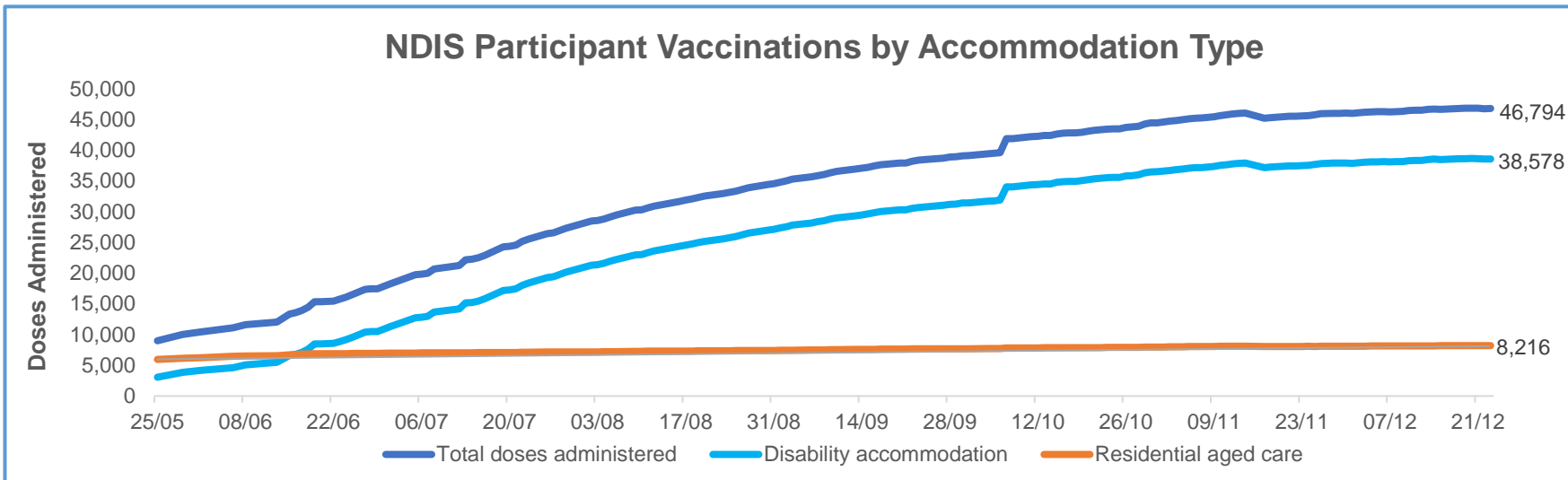
\*\*State level breakdown indicates the residential location and may not align to the state in which the vaccination occurred.

#Numbers are calculated as difference in daily cumulative reported numbers to allow for historical corrections in all data sources. This can occasionally result in negative numbers, such as for NSW, where historical details about doses have been updated.

Data as at:  
23 Dec 2021\*

# Vaccination rate of people with disability and the disability workforce

## Phase 1a – People with disability living in shared accommodation



	Total people with at least one dose	People fully vaccinated	Total number of individuals in cohort	Total doses administered	% People with at least one dose	% People fully vaccinated
NDIS participants living in shared accommodation **	23,767	23,027	27,603	46,794	86.1%	83.4%
NDIS screened workers ***	237,431	232,445	267,670	469,876	88.7%	86.8%



\* Updates are available Monday to Friday on participants, and bi-weekly for workers, numbers may be up to four days old.

\*\* Shared accommodation means two or more people with disability living in shared residential accommodation and NDIS participants living in Residential Aged Care accommodation as per the eligibility criteria of Phase 1a. The number of residents changes over time and refinement of methodology can lead to corrections in totals.

\*\*\* Total number of workers within the NDIS Commission Worker Screening database who have ever been successfully screened and linked to an NDIS registered provider or participant.

Source: Linkage between National Disability Insurance Agency data, NDIS Quality and Safeguards Commission data and the Australian Immunisation Register.

## Residential aged care vaccination rollout

### Residential aged care facilities status

**100%** Commonwealth facilities visited (2,591 planned sites)

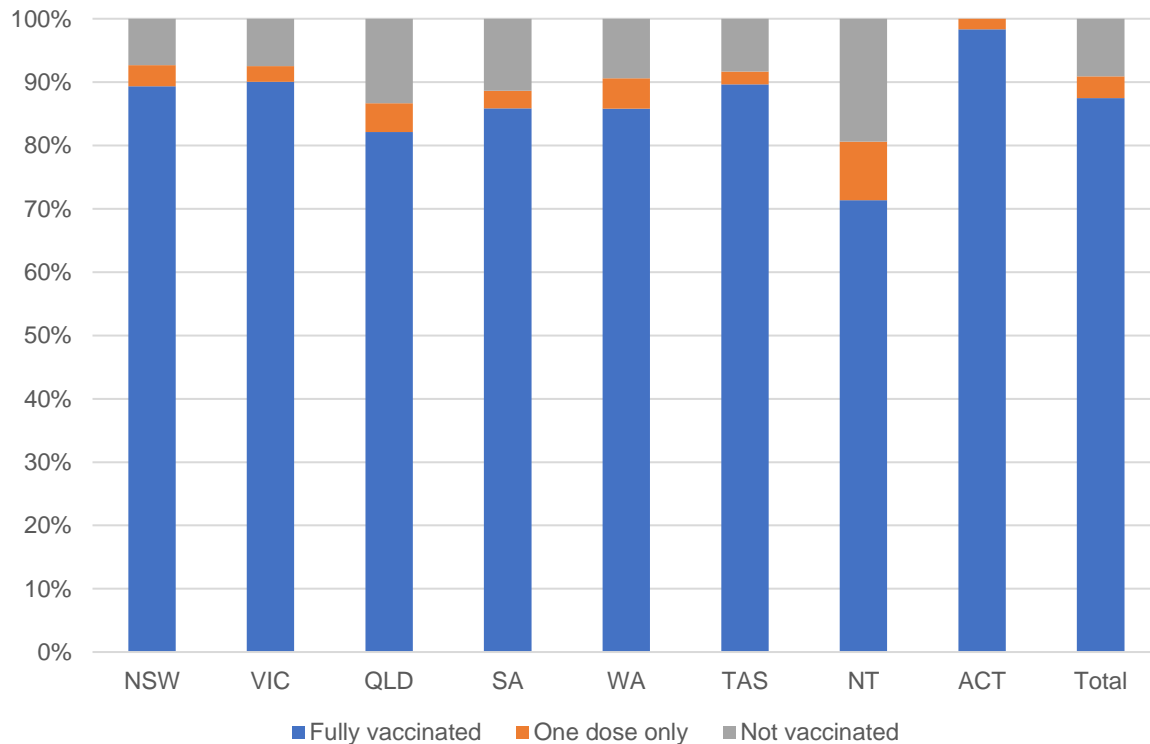
**163,171** People fully vaccinated

**169,621** People with at least one dose

Australia's COVID-19 Vaccine Roadmap

Data as at:  
21 Dec 2021

### Aged care resident vaccinations



### Aged care worker vaccinations

Jurisdictions	Total workers with at least one dose	Workers fully vaccinated	% Workers with at least one dose	% Workers fully vaccinated
NSW	79,232	79,189	99.5%	99.5%
VIC	70,827	70,801	99.2%	99.2%
QLD	48,425	48,373	98.8%	98.7%
SA	27,655	27,500	100.0%	99.4%
WA	23,752	23,664	99.8%	99.4%
TAS	7,605	7,534	100.0%	99.1%
NT	852	852	100.0%	100.0%
ACT	2,989	2,989	100.0%	100.0%
Total	261,337	260,902	99.4%	99.2%

Source: My Aged Care Portal staff vaccination progress

\*\*Resident vaccination information is reported manually by service providers

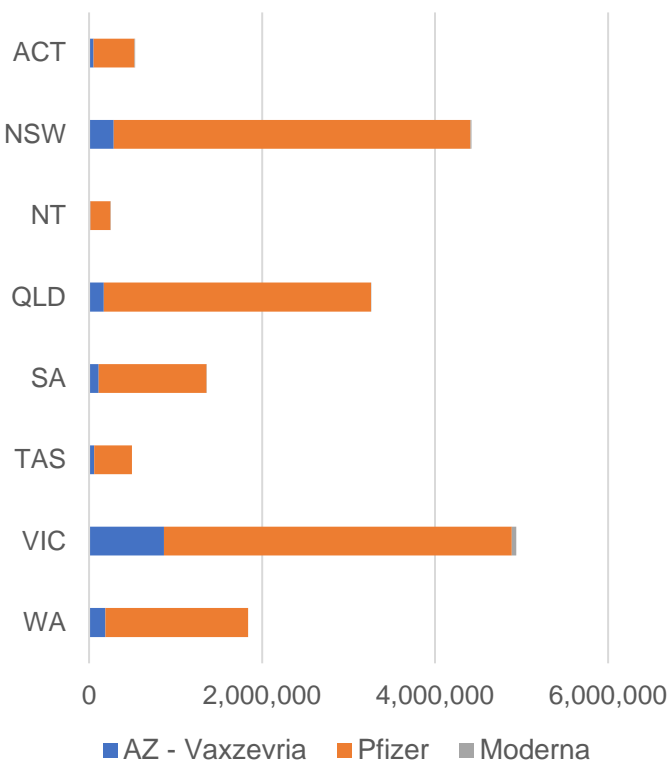
\*Status updates are provided by facilities at least once per week. Reporting is updated Monday to Friday to encompass different facility updates being made on different days.

Data is sourced directly from Aged Care Service Providers and is not drawn or closely aligned with data from AIR due to inconsistencies and potential lags in uploading of records.

Data as at:  
03 Jan 2022

# Jurisdiction administered

Total vaccine doses administered in State and Territory clinics as at 03 January



**17,095,259** total vaccine doses administered  
in State and Territory clinics as at 03 January  
+ **19,608** recorded in the last 24 hours  
+ **186,001** recorded in the last 7 days

**NSW**  
**4,422,680**  
(+4,968 daily  
increase)

**VIC**  
**4,940,439**  
(+204 daily  
increase)

**QLD**  
**3,261,022**  
(+1,344 daily  
increase)

**WA**  
**1,839,764**  
(+7,755 daily  
increase)

**TAS**  
**493,272**  
(+0 daily  
increase)

**SA**  
**1,357,731**  
(+5,005 daily  
increase)

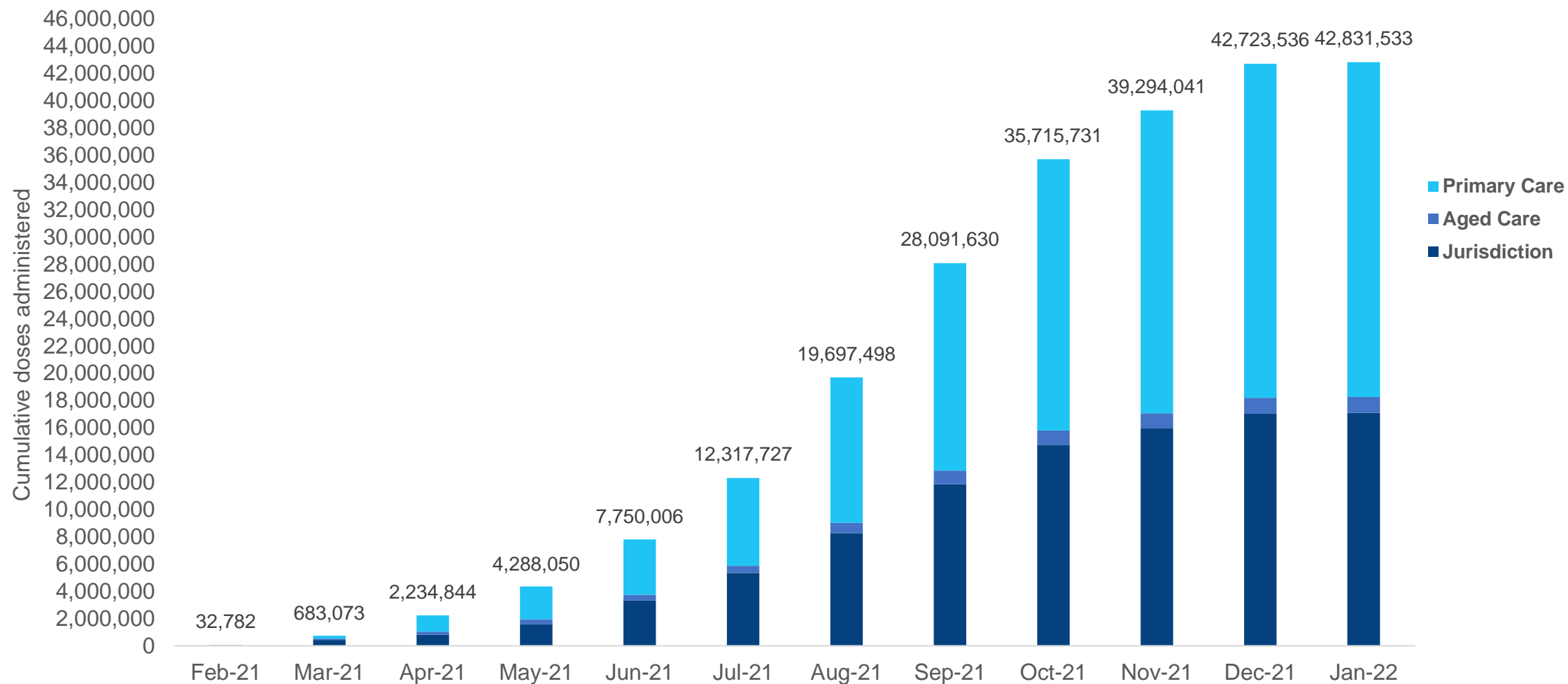
**ACT**  
**533,640**  
(+233 daily  
increase)

**NT**  
**246,711**  
(+99 daily  
increase)

\*Sourced from the Australian Immunisation Register and self-reported data. Numbers are calculated as difference in daily cumulative reported numbers to allow for historical corrections in all self-reported data sources.

# Cumulative doses administered by channel

Data as at:  
03 Jan 2022



Source: Australian Immunisation Register

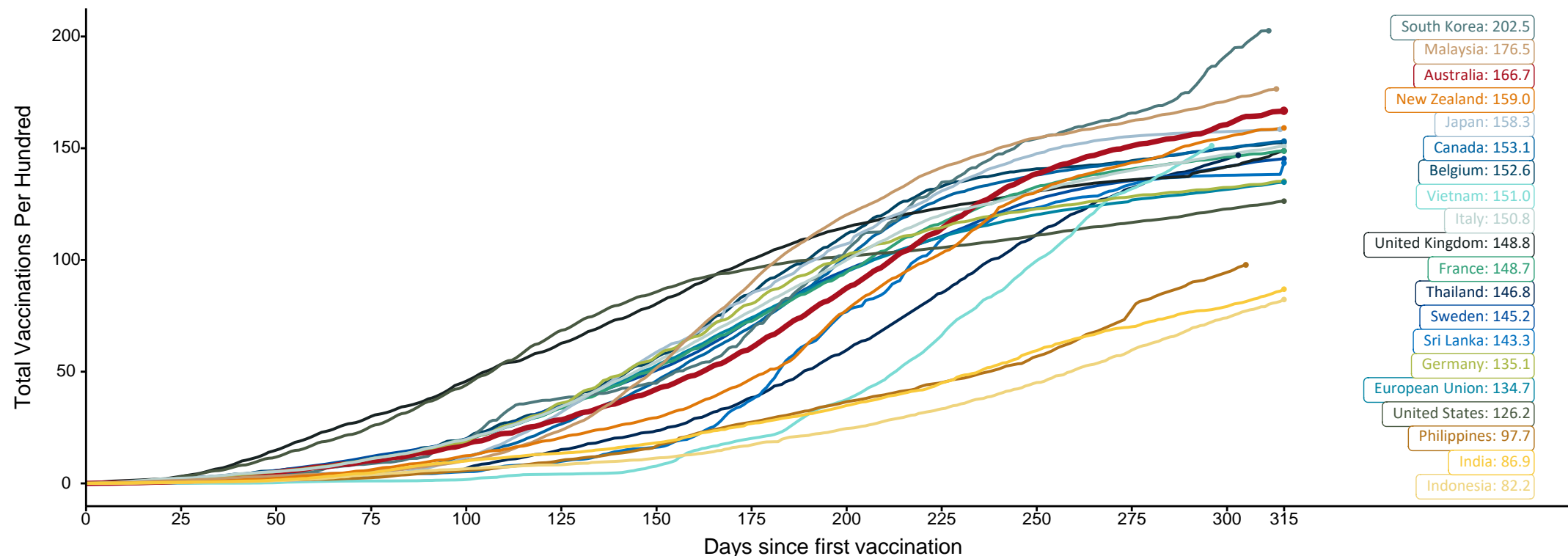


# Doses at equivalent stages of rollout (Day 315)

Data as at:  
03 Jan 2022

The x-axis is truncated at the length of Australia's vaccination program. Countries with intermittent reporting have had their doses per 100 imputed to Australia's current stage of rollout. Israel excluded as it is beyond scale of the graph.

Cumulative doses administered (03 Jan): **42,831,533**



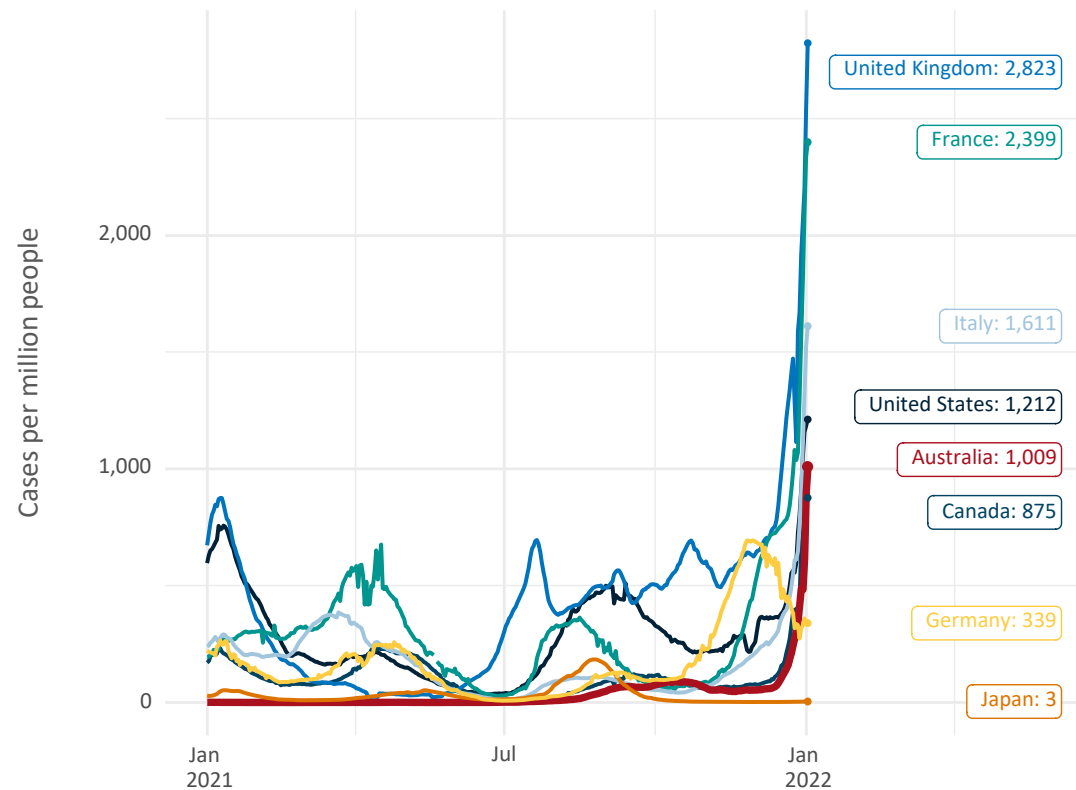
Note: From 15 September 2021, data for Australia includes all doses administered to people 12 and over. Prior to 15 September, data was for 16 and over  
Due to data revisions, Singapore has been removed from the chart  
Source: Department of Health (Australia), Our World in Data (international)  
Latest data: 03 January



# International data – COVID-19

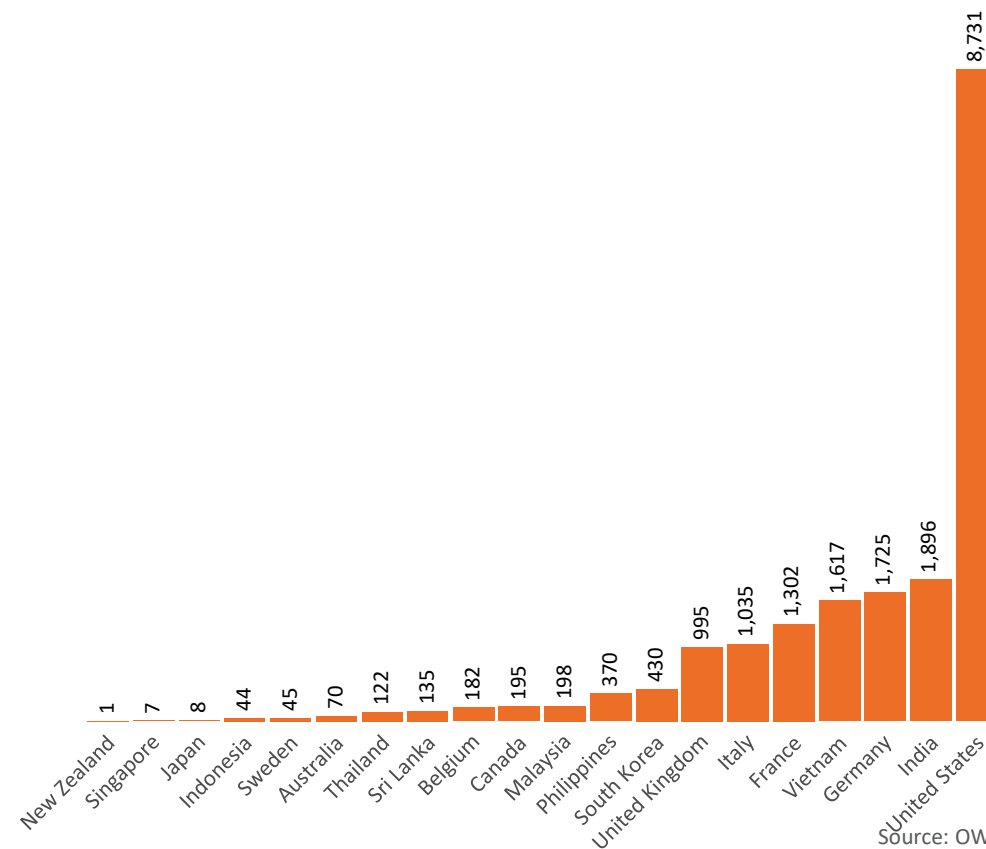
Data as at:  
03 Jan 2022

New daily cases per million in 2021, Australia and G7 countries  
Smoothed - 7 day average



Source: OWID  
Data downloaded: 04 Jan 2022 07:32  
Latest data: 02 Jan 2022

COVID-19 deaths in past 7 days - Australia and select countries

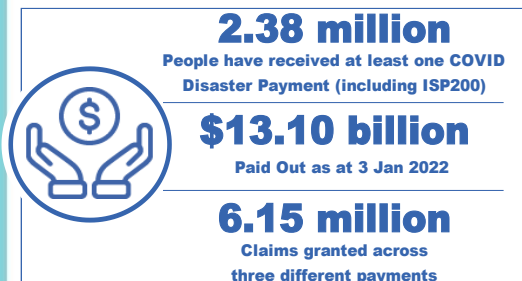


Source: OWID  
Data downloaded: 04 Jan 2022 07:32  
Latest data: 02 Jan 2022

# Pandemic Response Payments

Australia's COVID-19  
Vaccine Roadmap

Data as at midnight:  
3 Jan 2022



<b>COVID Disaster Payment:</b>	5.89 million claims received - 2.19 million individuals paid a total of \$12.59 billion.
<b>\$200 Income Support Payment:</b>	353,000 claims received - 183,000 individuals paid a total of \$268.91 million.
<b>Pandemic Leave Disaster Payment:</b>	197,000 claims received - 151,000 individuals paid a total of \$236.33 million.



## COVID Disaster Payment

assisting during a lockdown  
event in a Commonwealth  
hotspot.

## Income Support Payment \$200

for income support  
recipients who lost at  
least 8 hours of work.

## Pandemic Leave Disaster Payment

for those who have to  
self-isolate, quarantine  
or care.

For more information visit:  
[servicesaustralia.gov.au](https://servicesaustralia.gov.au)

## COVID-19 DISASTER PAYMENTS

### Victoria

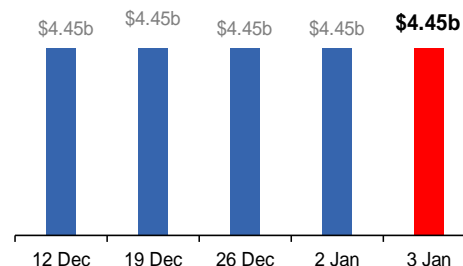
Lockdown (#6) from 6 Aug to 28 Oct  
Claiming period ended 9 Dec

**745,000 people have received at least  
one COVID Disaster Payment.**

**\$4.45b paid out as at 3 Jan 2022.**

**\$6,000 paid in initial and reoccurring  
payments in the week ending  
2 Jan 2022.**

Cumulative payments made by State since  
activation on 8 Jun 2021.



### Northern Territory

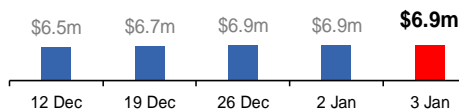
Lockdown (#3) from 16 Nov to 22 Nov  
Claiming period ends 27 Dec

**7,500 people have received at least one  
COVID Disaster Payment.**

**\$6.9m paid out as at 3 Jan 2022.**

**\$39,000 paid in initial payments in the  
week ending 2 Jan 2022.**

Cumulative payments made by Territory since  
activation on 25 Aug 2021.



### New South Wales

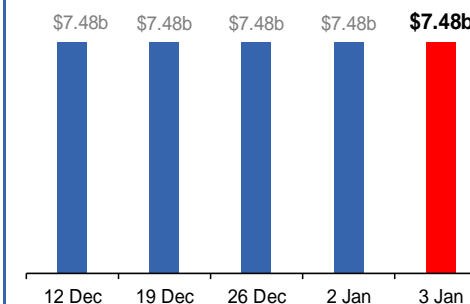
Lockdown from 24 Jun to 10 Oct  
Claiming period ended 27 Nov

**1.08m people have received at least  
one COVID Disaster Payment.**

**\$7.48b paid out as at 3 Jan 2022.**

**\$2,000 paid in initial and reoccurring  
payments in the week ending  
2 Jan 2022.**

Cumulative payments made by State since  
activation on 1 Jul 2021.



### Australian Capital Territory

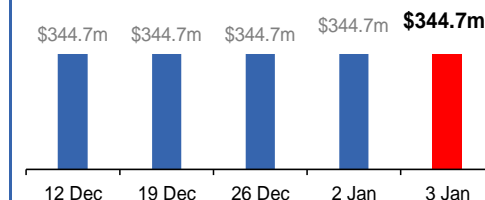
Lockdown from 12 Aug to 14 Oct  
Claiming period ended 25 Nov

**65,000 people have received at least  
one COVID Disaster Payment.**

**\$344.7m paid out as at 3 Jan 2022.**

**\$0 paid in initial and reoccurring  
payments in the week ending  
2 Jan 2022.**

Cumulative payments made by Territory since  
activation on 20 Aug 2021.



Data as at midnight:  
3 Jan 2022

# Pandemic Response Payments (continued)

## COVID-19 DISASTER PAYMENTS


### Tasmania

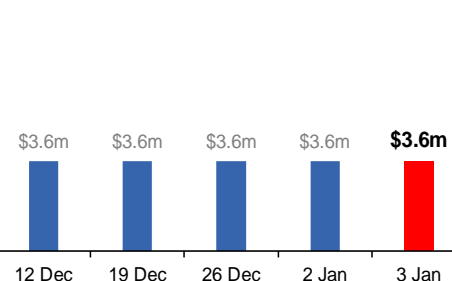
Lockdown from 15 Oct to 18 Oct  
Claiming period ended 12 Nov

**6,900 people have received at least one COVID Disaster Payment.**

**\$3.6m paid out as at 3 Jan 2022.**

**\$0 paid in initial and reoccurring payments in the week ending 2 Jan 2022.**

 Cumulative payments made by State since activation on 22 Oct 2021.




### Queensland

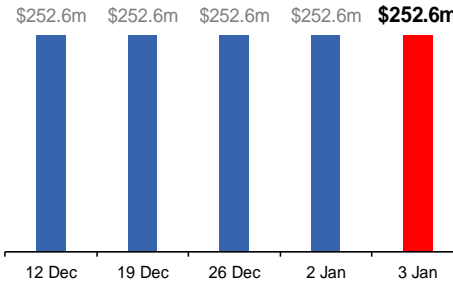
Lockdown from 31 Jul to 11 Aug  
Claiming period ended 28 Aug

**196,000 people have received at least one COVID Disaster Payment.**

**\$252.6m paid out as at 3 Jan 2022.**

**\$0 paid in initial and reoccurring payments in the week ending 2 Jan 2022.**

 Cumulative payments made by State since activation on 7 Aug 2021.




### South Australia

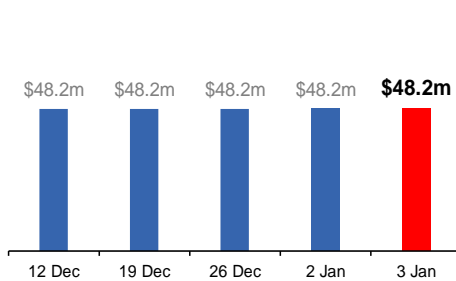
Lockdown from 21 to 27 Jul  
Claiming period ended 17 Aug

**86,000 people have received at least one COVID Disaster Payment.**

**\$48.2m paid out as at 3 Jan 2022.**

**\$0 paid in initial and reoccurring payments in the week ending 2 Jan 2022.**

 Cumulative payments made by State since activation on 28 Jul 2021.



# Administration and Utilisation

## Doses as at Week 46

	Ordered	Available	Administered	Available minus Administered	Estimated Dose Utilisation %
	Up to Week 44	Delivered up to Week 43 including redistributions	Up to Week 44		(see note)
NSW	5,469,490	4,958,260	4,417,712	540,548	99%
VIC	5,767,154	5,767,154	4,940,235	826,919	96%
QLD	3,936,478	3,795,368	3,259,678	535,690	96%
WA	1,919,668	1,860,538	1,832,009	28,529	Fully utilised
SA	1,617,890	1,588,890	1,352,726	236,164	95%
TAS	510,880	510,880	493,272	17,608	Fully utilised
NT	326,664	316,676	246,612	70,064	88%
ACT	502,856	502,856	533,407	-	Fully utilised
Jurisdiction delivered total	20,051,080	19,300,622	17,075,651	2,224,971	98%
Commonwealth Aged Care & Disability	1,183,836	1,181,472	1,173,303	8,169	N/A
Commonwealth Primary Care & Other	32,971,802	32,077,186	24,538,046	7,539,140	86%
Total	54,206,718	52,559,280	42,787,000	9,772,280	91%

### About this data

- Ordered – Total doses delivered to sites. Based on logistics provider data. This figure includes doses allocated for administration in the coming week.
- Available – total doses that could have been administered to date, less doses re-distributed from States & Territories to Primary Care or Aged Care & Disability (i.e. does not include those deliveries recently received, and intended for use in the coming week).
- Administered – Doses administered as at 2 January 2022.
- The dose utilisation is calculated based on the total doses administered and a small % wastage in line with international standards in relation to total available doses.
- For Aged Care & Disability, the doses available for administration is for the full period (Weeks 1-46).
- Aged Care & Disability utilisation is not provided as the in-reach rollout is demand-based, with vaccines ordered based on resident numbers.