



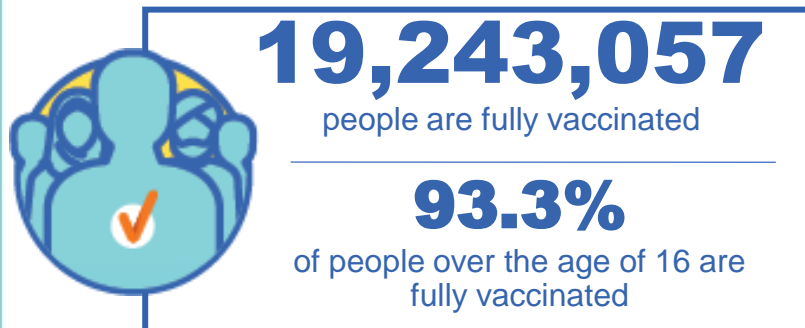
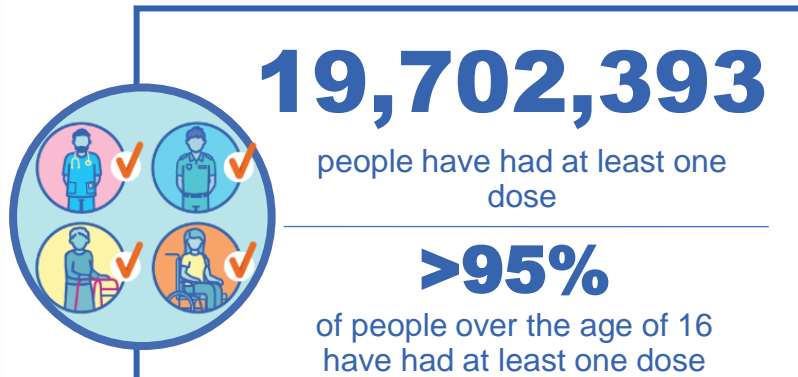
Australian Government
Operation COVID Shield

COVID-19 Vaccine Rollout

31 January 2022

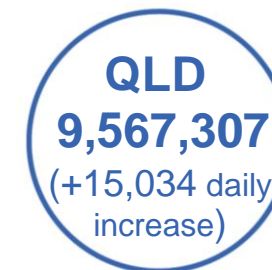
Data as at:
30 Jan 2022

Total vaccine doses



49,664,135 total vaccine doses administered nationally as at 30 January

+91,289 recorded in the last 24 hours



*Administration state breakdown indicates state in which a vaccine was administered

**Overall dose count includes instances of more than two doses per person in a small number of cases.

Source: Australian Immunisation Register

Booster Vaccinations

Australia's COVID-19
Vaccine Roadmap

Data as at:
30 Jan 2022



7,764,564 total people over the age of 18 years old
who have received more than two doses nationally

+65,520 people who have received more than two doses
nationally in the last 24 hours

NSW
2,531,396
(15,706 daily
increase)

VIC
2,060,639
(22,551 daily
increase)

QLD
1,416,125
(10,186 daily
increase)

WA
752,822
(8,167 daily
increase)

TAS
168,439
(992 daily
increase)

SA
562,819
(4,934 daily
increase)

ACT
163,244
(1,900 daily
increase)

NT
61,851
(441 daily
increase)

47,229

doses administered to persons
residing in other territories or with
missing residential information

Source: Australian Immunisation Register

Vaccinations by residential location

Australia's COVID-19
Vaccine Roadmap

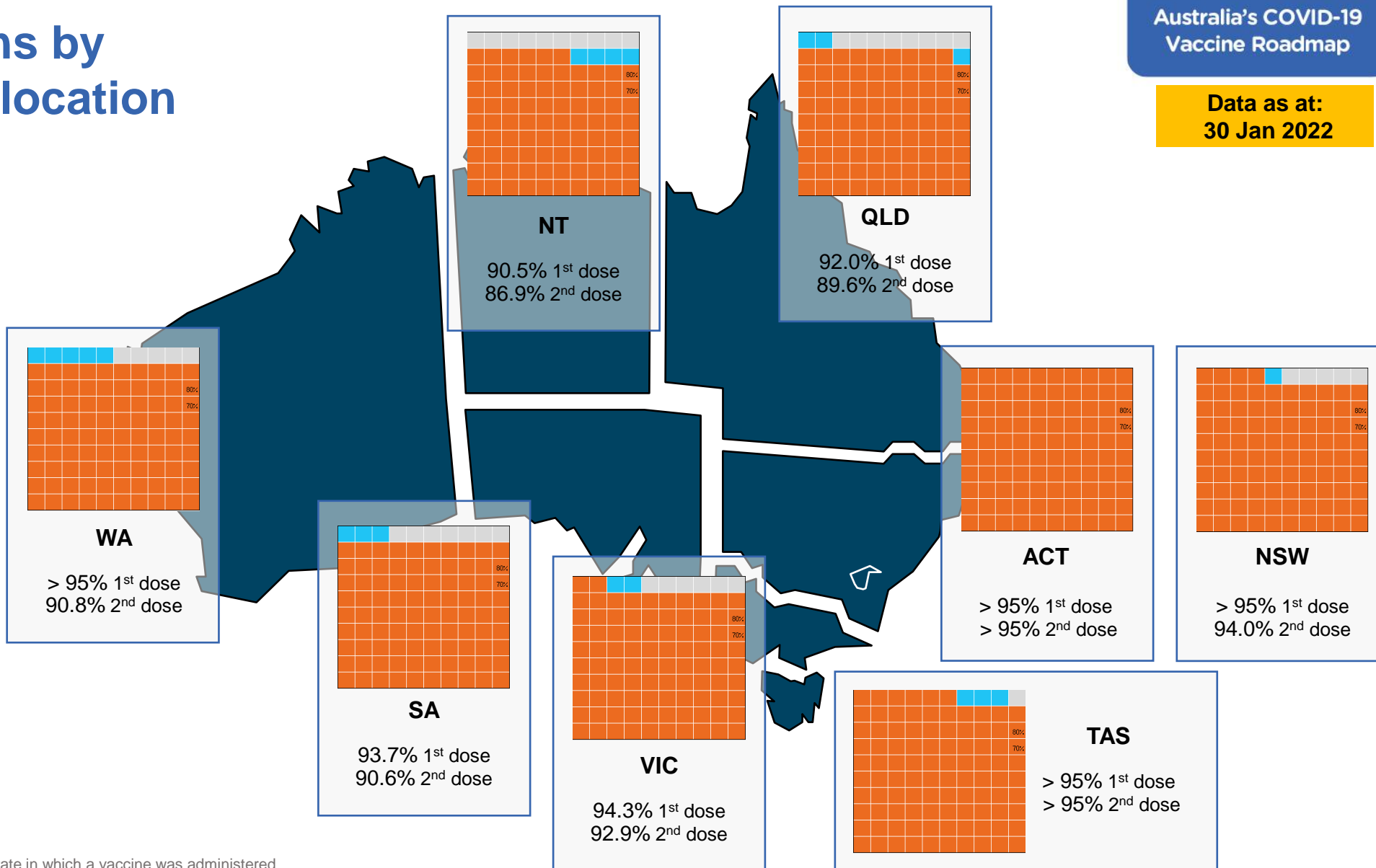
Data as at:
30 Jan 2022

First doses

Age	Today	4 weeks ago	8 weeks ago
16+	>95%	94.6%	93.3%
50+	>95%	>95%	>95%
70+	>95%	>95%	>95%

Fully vaccinated

Age	Today	4 weeks ago	8 weeks ago
16+	93.3%	91.7%	88.7%
50+	>95%	>95%	>95%
70+	>95%	>95%	>95%



*Residential state may differ from the state in which a vaccine was administered

Commonwealth and Jurisdiction vaccine doses administered

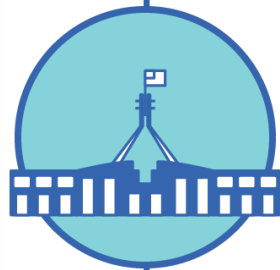
Data as at:
30 Jan 2022



49,664,135 total vaccine
doses administered nationally as at 30 January
+ 91,289 recorded in the last 24 hours



19,091,203
doses administered by state
and territory facilities
+ 47,571
recorded in the last 24 hours



30,572,932
doses administered by
commonwealth facilities
+ 43,718
recorded in the last 24 hours

29,351,778 total vaccine doses
administered in primary care settings
1,221,154 total vaccine doses
administered in aged care and disability
settings

NSW	Jurisdictions	Commonwealth
Cumulative	4,820,115	10,934,906
Daily increase	6,816	12,378

VIC	Jurisdictions	Commonwealth
Cumulative	5,507,587	7,593,763
Daily increase	15,352	14,230

QLD	Jurisdictions	Commonwealth
Cumulative	3,580,593	5,986,714
Daily increase	8,103	6,931

WA	Jurisdictions	Commonwealth
Cumulative	2,132,252	2,899,312
Daily increase	6,595	7,187

TAS	Jurisdictions	Commonwealth
Cumulative	554,731	542,122
Daily increase	2,411	437

SA	Jurisdictions	Commonwealth
Cumulative	1,590,910	1,816,900
Daily increase	5,024	2,084

ACT	Jurisdictions	Commonwealth
Cumulative	621,696	599,595
Daily increase	2,614	480

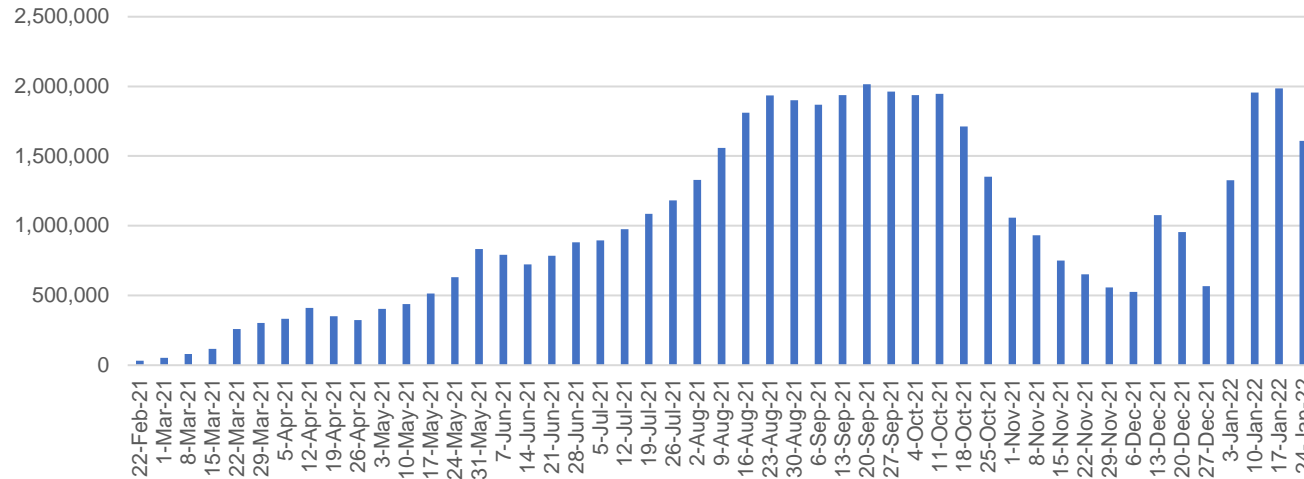
NT	Jurisdictions	Commonwealth
Cumulative	283,319	199,620
Daily increase	656	-9#

Numbers are calculated as difference in daily cumulative reported numbers to allow for historical corrections in all data sources. This can occasionally result in negative numbers, such as for NT, where historical details about doses have been updated.

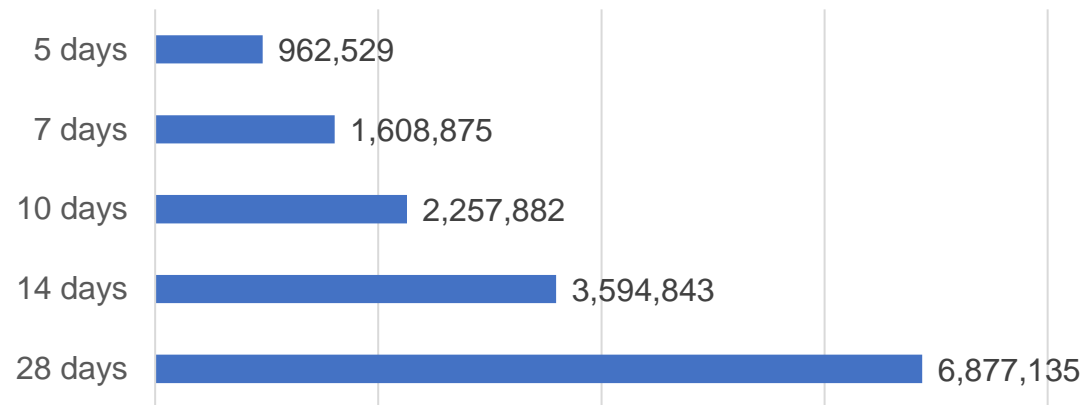
Source: Australian Immunisation Register

Vaccine milestone charts

Doses Administered by Week



Doses Reported

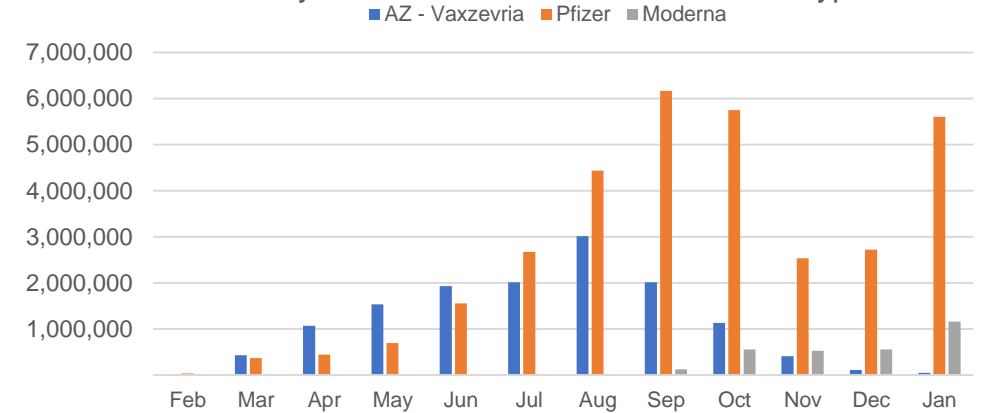


*Sourced from the Australian Immunisation Register.

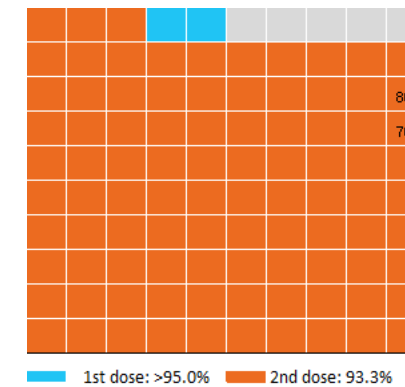
Data as at:
30 Jan 2022

Australia's COVID-19
Vaccine Roadmap

Doses by administration month and vaccine type



Eligible population percentage coverage



*Each square represents 1% of the national population.
Squares are filled as milestones are achieved.

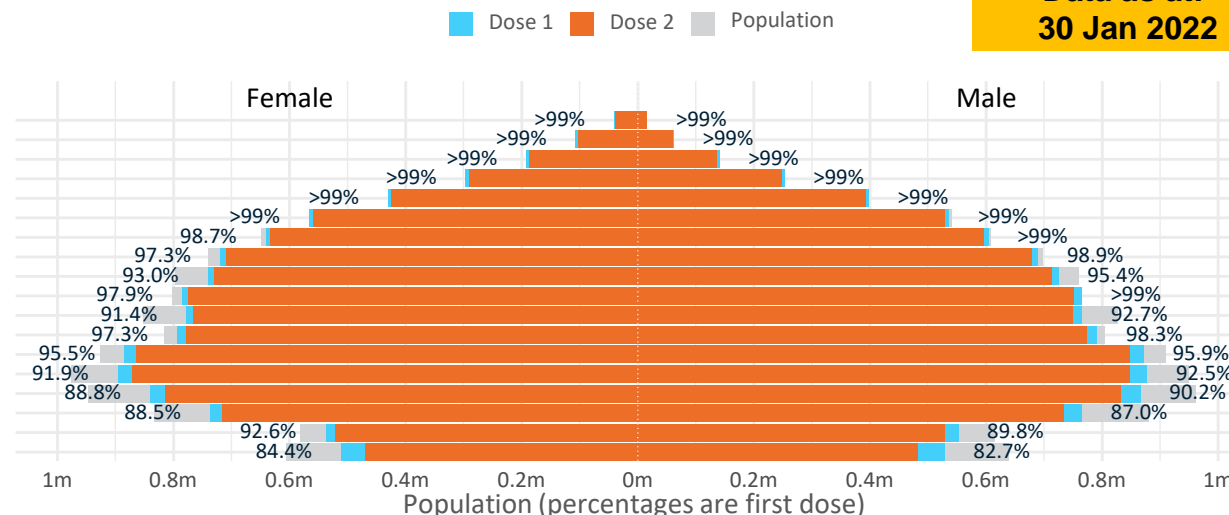
Data as at:
30 Jan 2022

Doses by age and sex

First and second doses by age and sex

	16+	50+	12-15	5-11
Dose 1	95.55% (19,702,393 doses / 20,619,959 people)	>99% (8,713,237 doses / 8,749,703 people)	83.55% (1,039,343 doses / 1,243,990 people)	39.80% (906,198 doses / 2,276,638 people)
Dose 2	93.32% (19,243,057 doses / 20,619,959 people)	97.98% (8,572,639 doses / 8,749,703 people)	76.50% (951,684 doses / 1,243,990 people)	-

Age	Dose 1	Dose 2
95+	56,658 (>99%)	52,942 (>99%)
90-94	168,977 (>99%)	162,072 (>99%)
85-89	332,450 (>99%)	323,197 (>99%)
80-84	549,310 (>99%)	539,223 (>99%)
75-79	828,223 (>99%)	816,779 (>99%)
70-74	1,103,317 (>99%)	1,088,937 (98.5%)
65-69	1,246,331 (>99%)	1,228,718 (97.7%)
60-64	1,410,685 (98.2%)	1,389,979 (96.8%)
55-59	1,466,364 (94.3%)	1,444,557 (92.9%)
50-54	1,550,922 (>99%)	1,526,235 (97.6%)
45-49	1,544,652 (92.1%)	1,516,632 (90.5%)
40-44	1,587,458 (98.0%)	1,552,830 (95.8%)
35-39	1,760,523 (95.9%)	1,714,988 (93.5%)
30-34	1,781,390 (92.6%)	1,724,437 (89.6%)
25-29	1,716,409 (90.0%)	1,654,521 (86.8%)
20-24	1,508,255 (88.1%)	1,455,698 (85.0%)
16-19	1,090,469 (91.2%)	1,051,312 (87.9%)
12-15	1,039,343 (83.5%)	951,684 (76.5%)

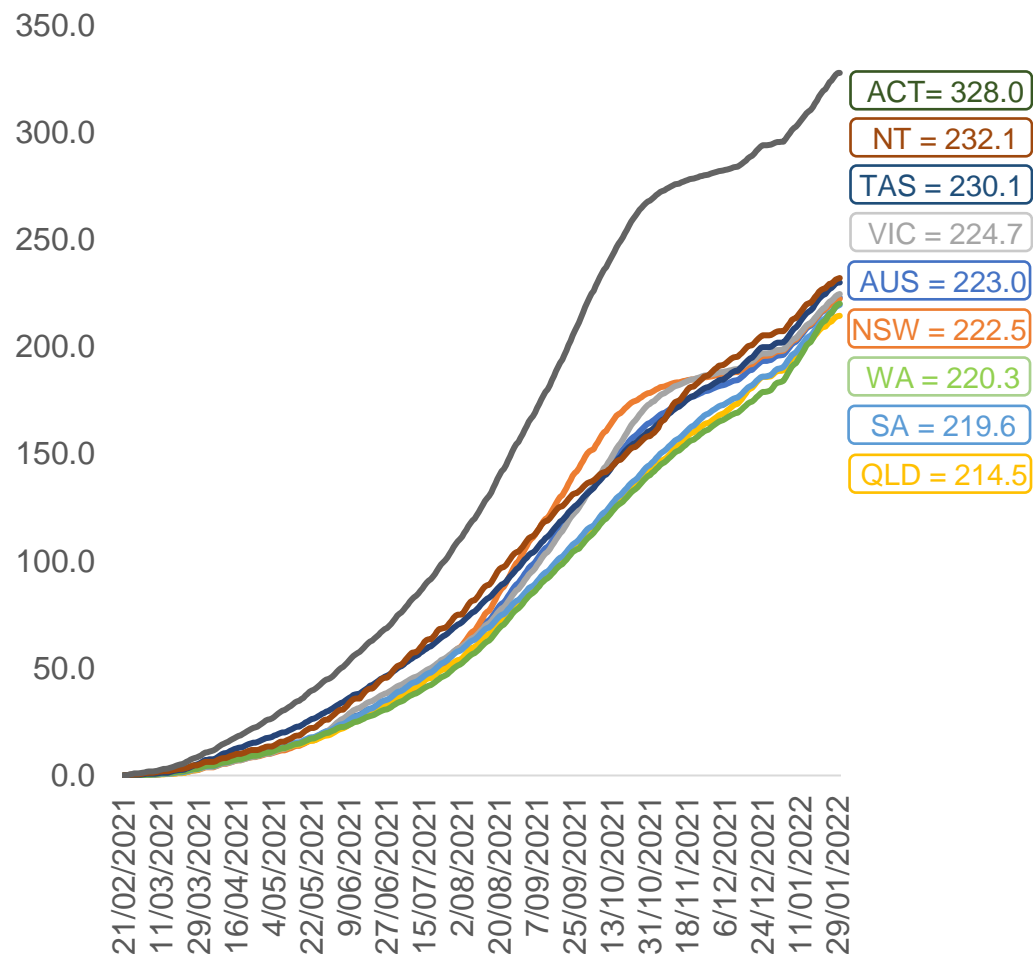


	AUS	ACT	NSW	NT	QLD	SA	TAS	VIC	WA
16 and over - dose 1	19,702,393	348,810	6,264,676	172,399	3,783,577	1,349,159	437,287	5,096,913	2,024,873
16 and over - dose 2	19,243,057	343,916	6,171,203	165,666	3,683,458	1,305,499	423,436	5,025,003	1,919,678
16 and over - population	20,619,959*	344,037	6,565,651	190,571	4,112,707	1,440,400	440,172	5,407,574	2,114,978
16 and over % with dose 1	95.55%	>99%	95.42%	90.46%	92.00%	93.67%	>99%	94.26%	95.74%
16 and over % with dose 2	93.32%	>99%	93.99%	86.93%	89.56%	90.63%	96.20%	92.93%	90.77%
5 to 11 - dose 1	906,198	26,975	279,778	9,685	162,240	63,581	22,481	256,537	80,042
5 to 11 - population	2,276,638	39,789	716,460	24,750	478,731	148,816	45,033	578,499	244,154
5 to 11 % with dose 1	39.80%	67.80%	39.05%	39.13%	33.89%	42.72%	49.92%	44.35%	32.78%
12 to 15 - dose 1	1,039,343	19,967	324,860	10,691	204,109	67,042	22,327	274,929	106,380
12 to 15 - dose 2	951,684	19,150	306,465	9,275	181,993	60,204	19,970	260,782	86,318
12 to 15 - population	1,243,990	19,693	390,330	13,060	270,146	82,747	26,308	308,611	132,869
12 to 15 % with dose 1	83.55%	>99%	83.23%	81.86%	75.56%	81.02%	84.87%	89.09%	80.06%
12 to 15 % with dose 2	76.50%	97.24%	78.51%	71.02%	67.37%	72.76%	75.91%	84.50%	64.96%

*National population will not equal sum of listed jurisdictions due to a small number of people counted in national population residing in some 'other' territories. Sum of state doses will not add to national total as some records are unable to be geocoded to a State or Territory.
Doses sourced from Australian Immunisation Register, population from ABS ERP June 2020

Vaccinations by location

Cumulative total doses administered vs eligible state populations*

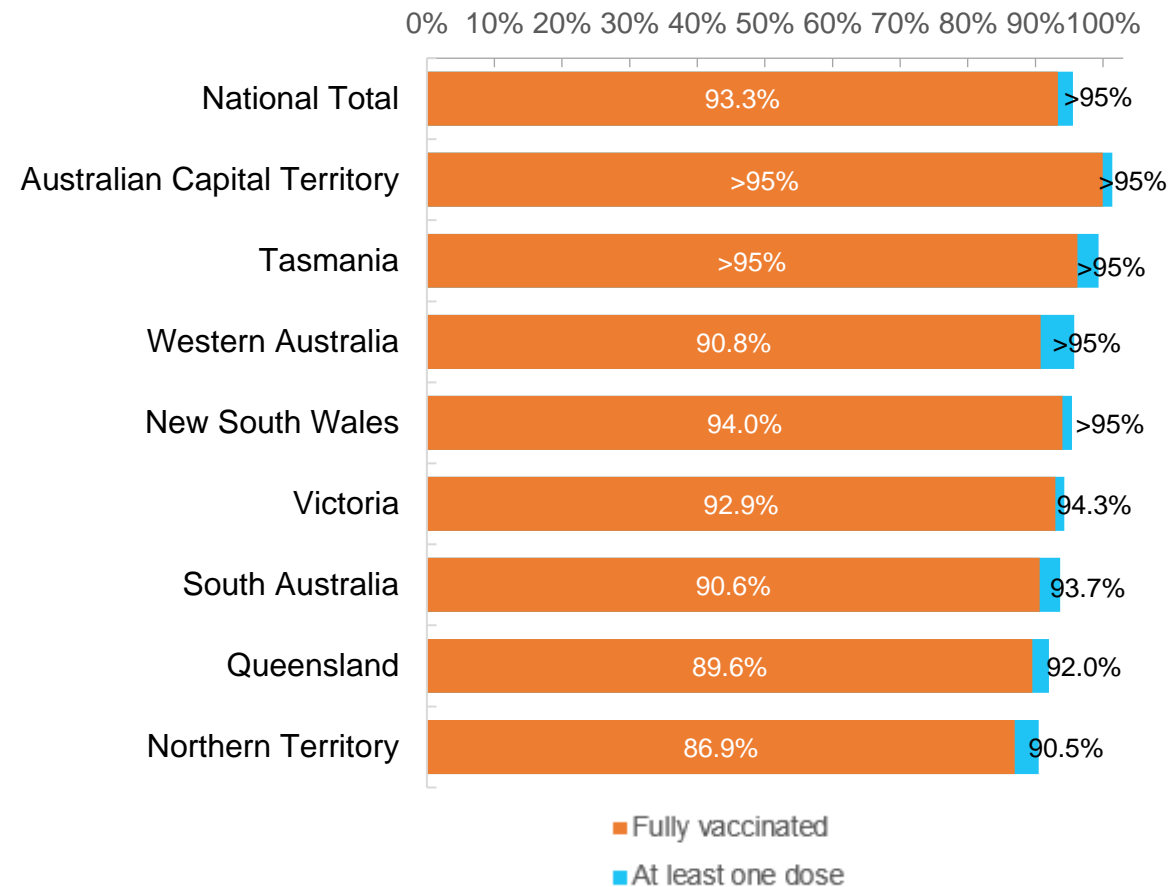


*Not an indication of percentage vaccinated, numbers will exceed 100 due to multiple doses required per person of the population. All doses are included for those aged 12 and above, and are based on vaccination provider location.

Data as at:
30 Jan 2022

Australia's COVID-19
Vaccine Roadmap

First and Second Doses by residential location



Aboriginal and Torres Strait Islander peoples

Number of people vaccinated

Data as at:
25 Jan 2022
Updated weekly

Australia's COVID-19
Vaccine Roadmap



425,024

people over the age of 16
have had at least one dose

81.4%

of people over the age of 16
have had at least one dose



392,161

people over the age of 16
are fully vaccinated

75.1%

of people over the age of 16 are
fully vaccinated



**45,600
(64.1%)**

people aged 12-15 years
have had at least one dose

173 Aboriginal community controlled health services (ACCHS)###

0#	50	27	41	12	3	21	19
ACT	NSW	NT	QLD	SA	TAS	VIC	WA

Medicare Address State##	Individuals Dose 1	Individuals Dose 1 %	Individuals Dose 2	Individuals Dose 2 %
Australian Capital Territory	4,890	91.0%	4,745	88.3%
New South Wales	135,911	86.4%	132,177	84.0%
Northern Territory	41,106	87.1%	37,208	78.8%
Queensland	112,091	78.7%	102,361	71.9%
South Australia	19,274	76.8%	17,114	68.2%
Tasmania	14,399	87.0%	13,626	82.3%
Victoria	35,277	88.9%	34,261	86.3%
Western Australia	46,602	73.8%	37,869	60.0%
Unknown/Other Territories	15,474	60.4%	12,800	50.0%
Totals	425,024	81.4%	392,161	75.1%

Source: Australian Immunisation Register

*Identifying as Aboriginal and Torres Strait Islander is optional and the estimated population may be under reported.

**Includes all Aboriginal and Torres Strait Islander peoples who have received a vaccination, not limited to those administered in an ACCHS setting

#ACCHS in the ACT are currently operating as a Commonwealth Vaccine Clinics so not included to avoid double counting

##The above table includes all identified Aboriginal and Torres Strait Islander people who are aged 16 and above by their state of residence.

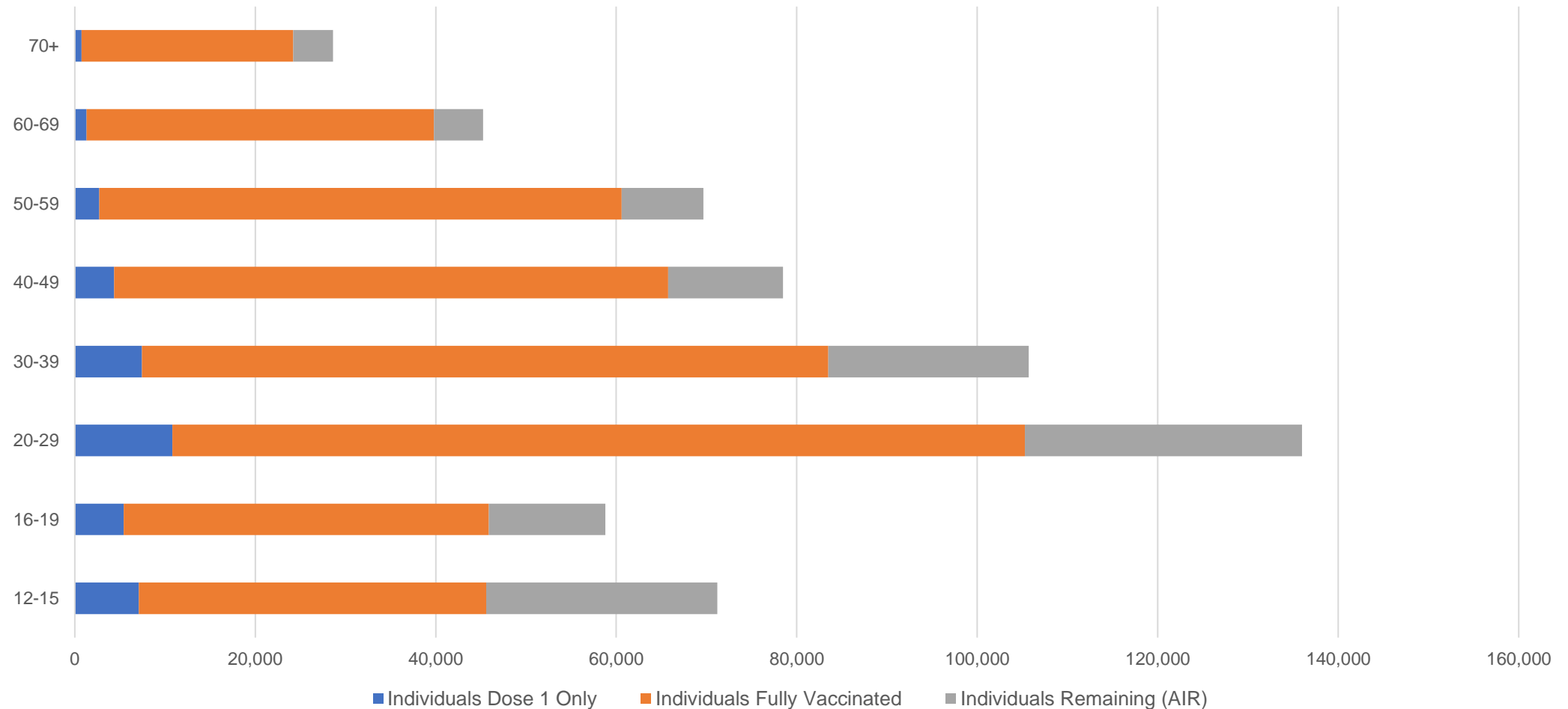
Site numbers current as at 18 January 2022.

Aboriginal and Torres Strait Islander peoples

Number of people vaccinated by age

Data as at:
25 Jan 2022
Updated weekly

Australia's COVID-19
Vaccine Roadmap



Source: Australian Immunisation Register

Commonwealth primary care

Data as at:
30 Jan 2022

Australia's COVID-19
Vaccine Roadmap



Primary care vaccine administration sites

5,738	128	174	3,514
GPs	CVCs	ACCHS	Pharmacies



29,351,778 total vaccine doses administered
primary care settings as at 30 January
+ 42,937 recorded in the last 24 hours

Primary care vaccinations by provider type

	Doses administered	Daily increase	7 day increase
General Practice* includes other Commonwealth	24,510,119	31,703	783,586
Pharmacy	4,841,659	11,234	351,491

NSW
10,404,399
(+12,098 daily increase)

VIC
7,309,947
(+13,589 daily increase)

QLD
5,720,082
(+6,692 daily increase)

WA
2,784,064
(+6,859 daily increase)

TAS
524,504
(+426 daily increase)

SA
1,742,101
(+1,973 daily increase)

ACT
466,335
(+388 daily increase)

NT
179,023
(+9 daily increase)

221,323

doses administered to persons
residing in other territories or with
missing residential information

*General practice includes Commonwealth Vaccination Clinics, Aboriginal Community Health Centres, Royal Flying Doctor Service and other Commonwealth vaccination facilities

Source: Australian Immunisation Register

Data as at:
30 Jan 2022

Commonwealth aged care and disability doses administered



1,221,154 (+ 781 last 24 hours)

Total vaccine doses administered in aged care and disability facilities as at 30 January

Number of doses administered as part of the Commonwealth aged and disability care rollout

NSW
548,139
(+44 daily increase)

VIC
230,227
(+277 daily increase)

QLD
192,499
(+81 daily increase)

WA
93,680
(+239 daily increase)

TAS
21,714
(+17 daily increase)

SA
81,481
(+59 daily increase)

ACT
15,989
(+26 daily increase)

NT
6,995
(+10 daily increase)

30,430

doses administered to persons
residing in other territories or with
missing residential information

*Sourced from the Australian Immunisation Register. Includes all persons vaccinated at participating residential aged care, disability and related industry settings.

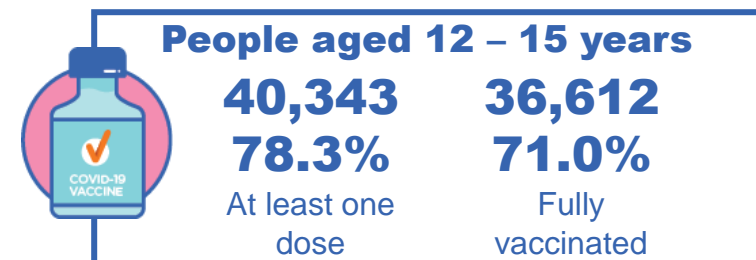
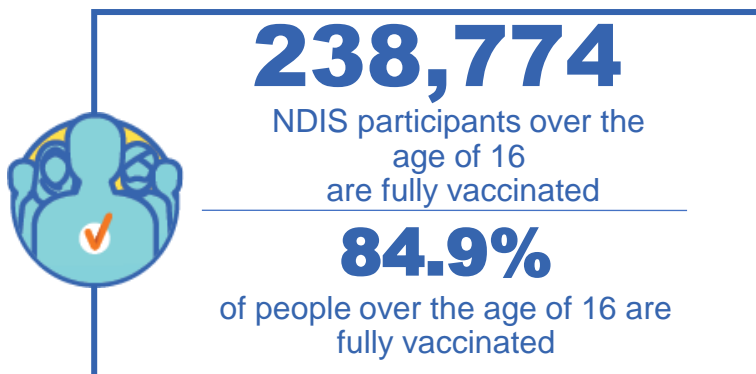
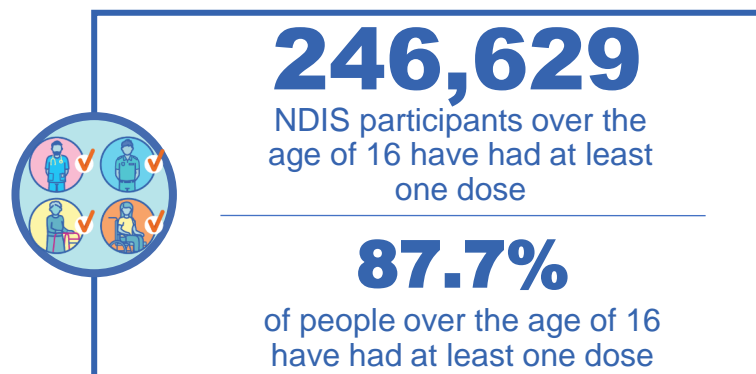
**State level breakdown indicates the residential location and may not align to the state in which the vaccination occurred.

Source: Australian Immunisation Register

National Disability Insurance Scheme (NDIS) reported vaccinations

Data as at:
27 January 2022
Updated weekly

Australia's COVID-19
Vaccine Roadmap



NDIS participant vaccinations

	People aged 16+ with at least one dose	People aged 16+ fully vaccinated	% People aged 16+ with at least one dose	% People aged 16+ fully vaccinated
ACT	4,742	4,664	90.20%	88.70%
NSW	76,905	75,510	88.60%	87.00%
NT	2,135	2,008	78.90%	74.20%
QLD	48,133	46,268	86.60%	83.20%
SA	19,860	19,046	85.10%	81.20%
TAS	6,148	5,856	87.30%	83.20%
VIC	66,196	64,807	89.30%	87.40%
WA	22,406	20,269	85.30%	78.40%
National	246,629	238,774	87.70%	84.90%

Source: Linkage between National Disability Insurance Agency data and the Australian Immunisation Register. Total NDIS participants data as at 17th October. Australian Immunisation Register data as at 26 January. Includes all participants regardless of residence type.

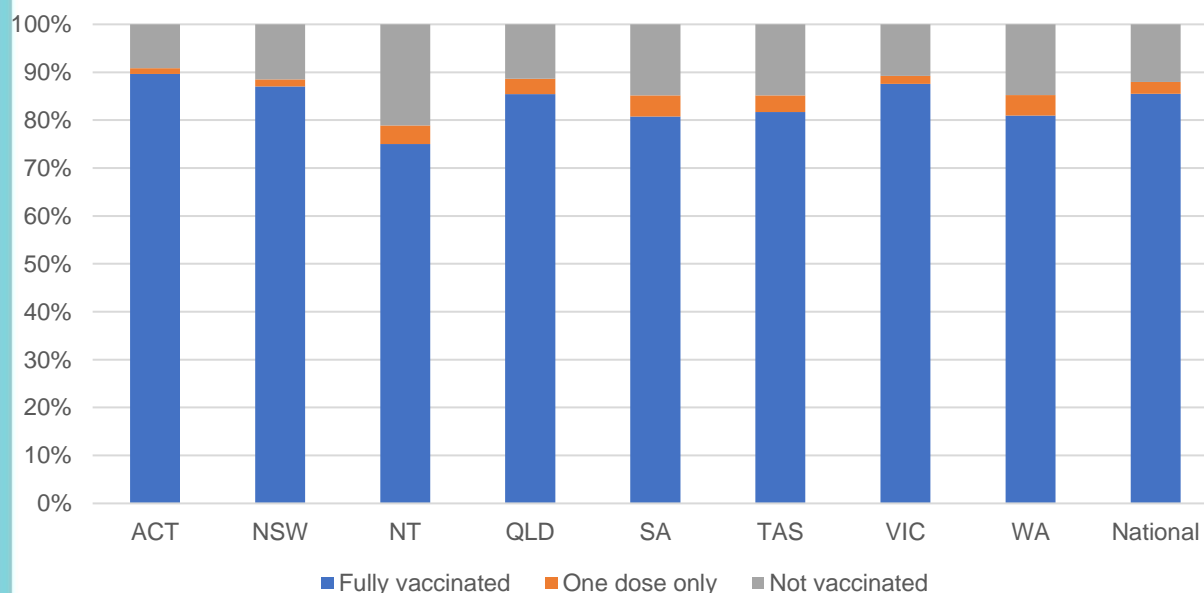
National Disability Insurance Scheme (NDIS) reported vaccinations

Data as at:
27 January 2022
Updated Weekly

Australia's COVID-19
Vaccine Roadmap

NATIONAL	Total people with at least one dose	People fully vaccinated	Total number of individuals in cohort	% People with at least one dose	% People fully vaccinated
NDIS participants living in disability accommodation	20,072	19,560	22,800	88.00%	85.80%

NDIS participants in disability and aged care accommodation



Source: Linkage between National Disability Insurance Agency data and the Australian Immunisation Register. Includes participants residing in disability accommodation only.

Source: Total NDIS participants numbers as at 17th October. Participant data as at 26 January. Australian Immunisation Register data as at 26 January. Worker data as at 27th January.

NDIS workforce vaccinations

	NDIS workers with at least one dose	NDIS workers fully vaccinated	% NDIS workers with at least one dose	% NDIS workers fully vaccinated
NSW	109,317	108,749	96.7%	96.2%
VIC	104,011	103,507	97.8%	97.3%
QLD	64,407	63,437	96.1%	94.6%
WA	30,910	29,051	97.4%	91.5%
SA	33,929	32,717	98.0%	94.5%
TAS	10,140	9,946	99.5%	97.6%
ACT	3,397	3,387	99.4%	99.1%
NT	3,062	3,017	99.4%	97.9%
TOTAL	359,173	353,811	97.2%	95.8%

Source: the NDIS Commission has established a requirement for registered NDIS providers who provide intensive disability support services to report on the vaccination status of workers they employ, or otherwise engage, to deliver NDIS-funded supports and services, and who are required to be vaccinated in accordance with in-force state and territory public health orders. The statistics reflect data reported to the NDIS Commission by registered NDIS providers and should be considered indicative and subject to change

Note: Some registered NDIS providers are yet to report on the vaccination status of their workforce. The NDIS Commission is working with those providers around reporting requirements.

Remaining workers not included include those exempt from vaccination requirements, workers whose vaccination status is not yet verified by the provider (such as workers on leave) and provider reporting anomalies.

Residential aged care vaccination rollout

Data as at:
30 Jan 2022

Residential aged care facilities status

100%

Commonwealth facilities visited (2,590 planned sites)

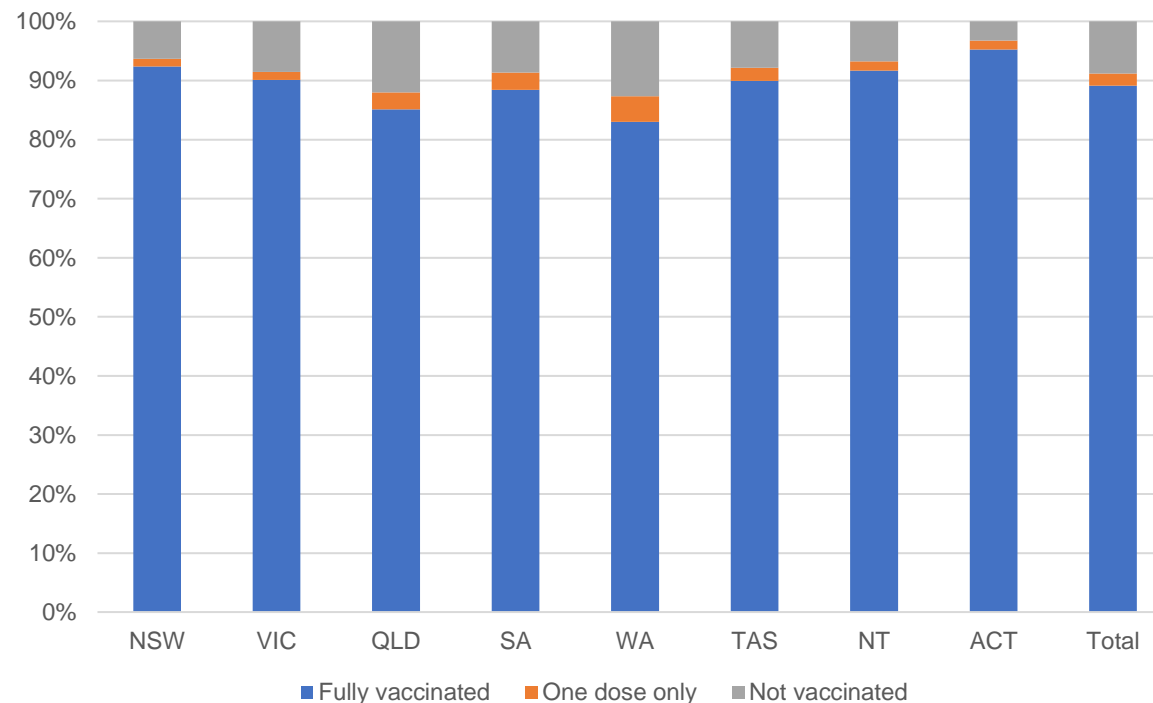
170,082

People fully vaccinated

174,043

People with at least one dose

Aged care resident vaccinations



Aged care worker vaccinations

Jurisdictions	Total workers with at least one dose	Workers fully vaccinated	% Workers with at least one dose	% Workers fully vaccinated
NSW	78,703	78,670	98.9%	98.9%
VIC	70,471	70,471	99.1%	99.1%
QLD	48,762	48,749	99.4%	99.3%
SA	27,256	27,209	99.1%	98.9%
WA	23,852	23,775	100.0%	99.7%
TAS	7,600	7,589	99.4%	99.3%
NT	858	858	99.9%	99.9%
ACT	3,061	3,061	100.0%	100.0%
Total	260,563	260,382	99.2%	99.1%

Source: My Aged Care Portal vaccination progress

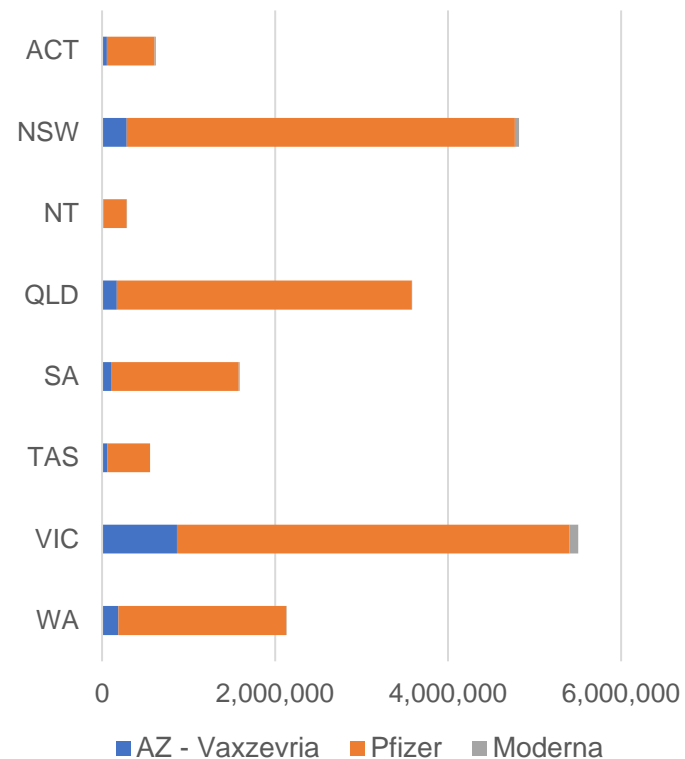
*Status updates are provided by facilities at least once per week. Reporting is updated Monday to Friday to encompass different facility updates being made on different days.

Data is sourced directly from Aged Care Service Providers and is not drawn or closely aligned with data from AIR due to inconsistencies and potential lags in uploading of records.

Data as at:
30 Jan 2022

Jurisdiction administered

Total vaccine doses administered in State and Territory clinics as at 30 January



19,091,203 total vaccine doses administered
in State and Territory clinics as at 30 January
+ **47,571** recorded in the last 24 hours
+ **456,520** recorded in the last 7 days

NSW
4,820,115
(+6,816 daily
increase)

VIC
5,507,587
(+15,352 daily
increase)

QLD
3,580,593
(+8,103 daily
increase)

WA
2,132,252
(+6,595 daily
increase)

TAS
554,731
(+2,411 daily
increase)

SA
1,590,910
(+5,024 daily
increase)

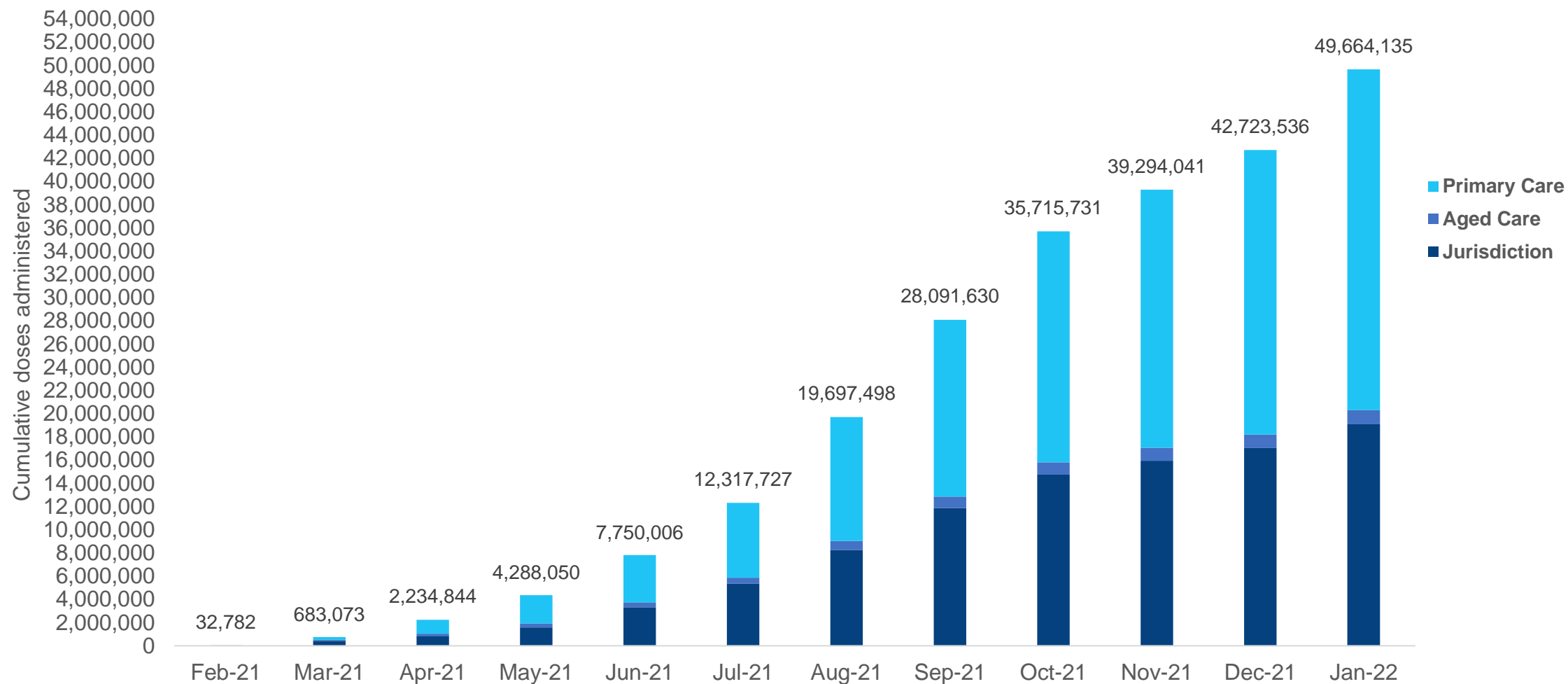
ACT
621,696
(+2,614 daily
increase)

NT
283,319
(+656 daily
increase)

*Sourced from the Australian Immunisation Register. Numbers are calculated as difference in daily cumulative reported numbers to allow for historical corrections.

Cumulative doses administered by channel

Data as at:
30 Jan 2022



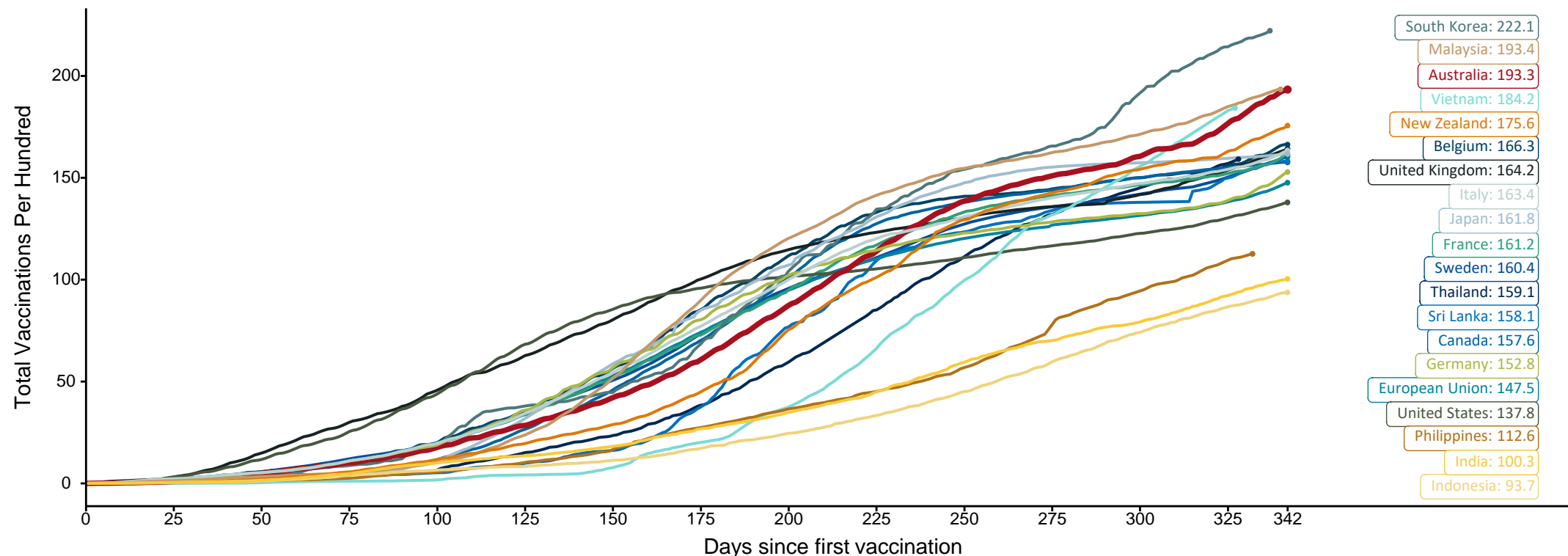
Source: Australian Immunisation Register

Doses at equivalent stages of rollout (Day 342)

Data as at:
30 Jan 2022

The x-axis is truncated at the length of Australia's vaccination program. Countries with intermittent reporting have had their doses per 100 imputed to Australia's current stage of rollout. Israel excluded as it is beyond scale of the graph

Cumulative doses administered (30 Jan): **49,664,135**

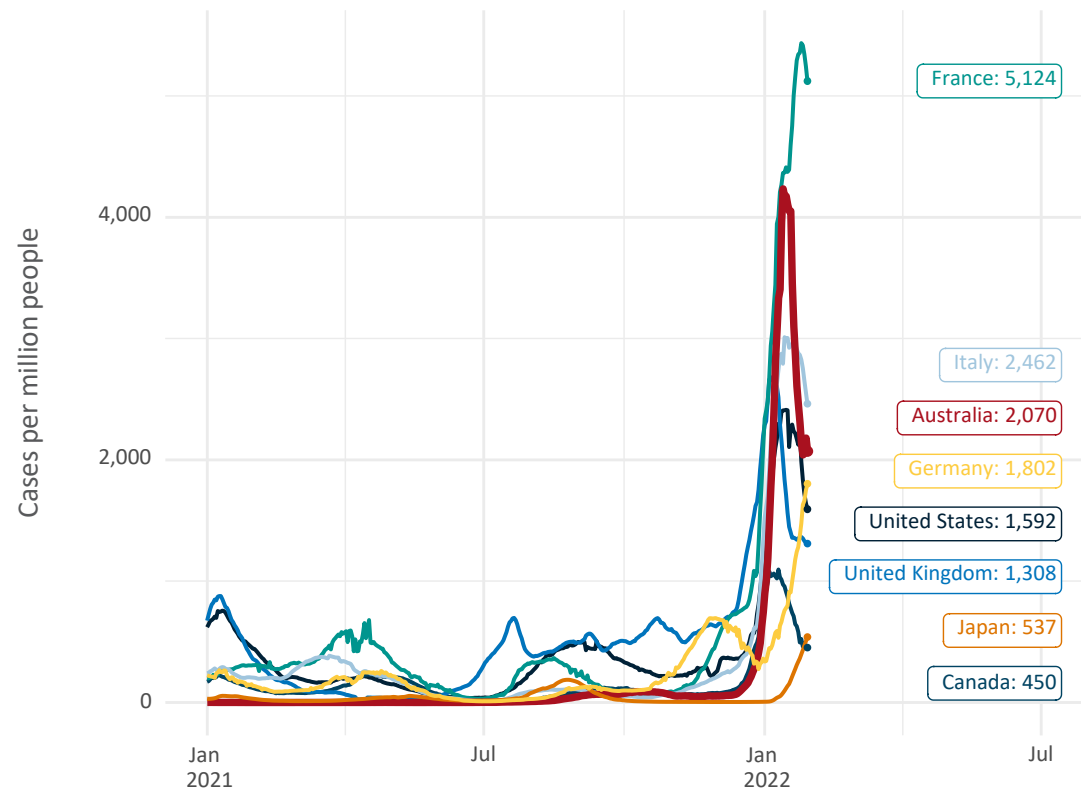


Note: From 15 September 2021, data for Australia includes all doses administered to people 12 and over. Prior to 15 September, data was for 16 and over
Due to data revisions, Singapore has been removed from the chart
Source: Department of Health (Australia), Our World in Data (international)
Latest data: 30 January

International data – COVID-19

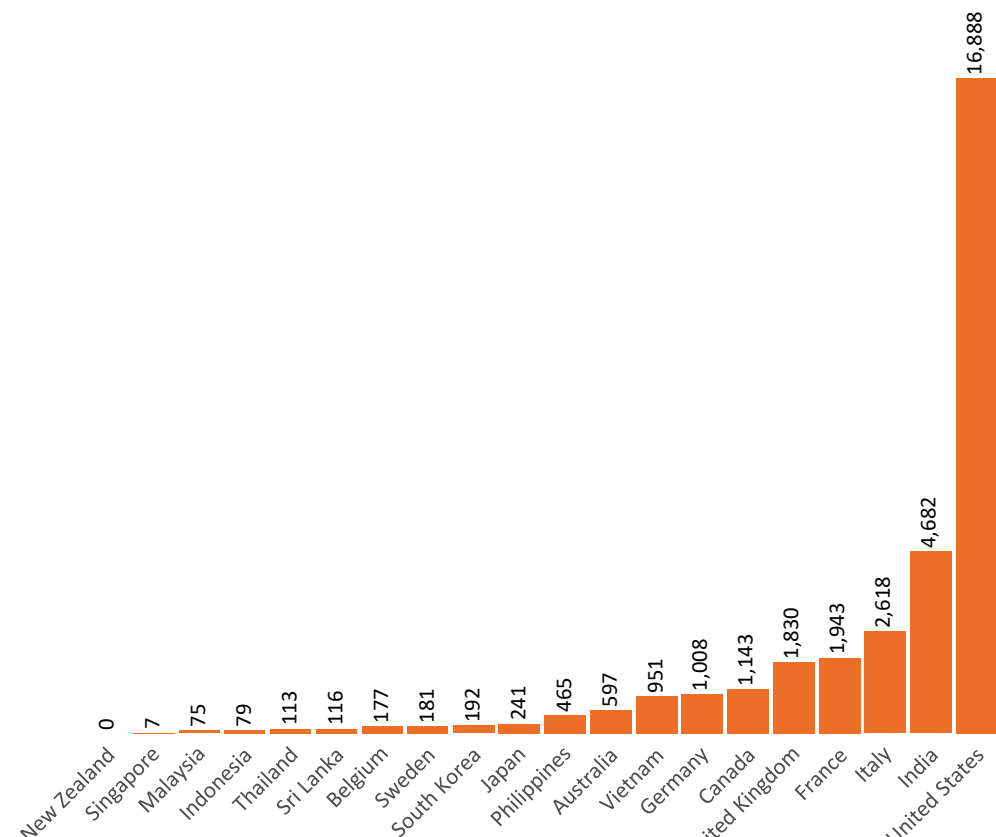
Data as at:
30 Jan 2022

New daily cases per million in 2021, Australia and G7 countries
Smoothed - 7 day average



Source: OWID
Data downloaded: 31 Jan 2022 08:03
Latest data: 29 Jan 2022

COVID-19 deaths in past 7 days - Australia and select countries

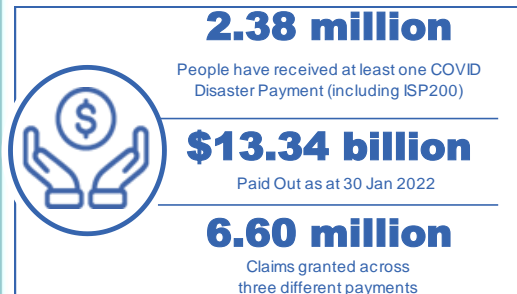


Source: OWID
Data downloaded: 31 Jan 2022 08:03
Latest data: 29 Jan 2022

Pandemic Response Payments

Australia's COVID-19
Vaccine Roadmap

Data as at midnight:
30 Jan 2022
Updated weekly



COVID Disaster Payment:	5.89 million claims received - 2.19 million individuals paid a total of \$12.59 billion.
\$200 Income Support Payment:	353,000 claims received - 183,000 individuals paid a total of \$268.91 million.
Pandemic Leave Disaster Payment:	729,000 claims received - 539,000 individuals paid a total of \$576.5 million.



COVID Disaster Payment

assisting during a
lockdown event in a
Commonwealth hotspot.

Income Support Payment \$200

for income support
recipients who lost at
least 8 hours of work.

Pandemic Leave Disaster Payment

for those who have to
self-isolate, quarantine
or care.

For more information visit:
servicesaustralia.gov.au

COVID-19 DISASTER PAYMENTS

Northern Territory

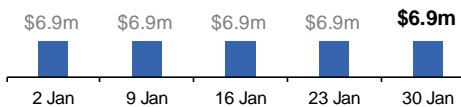
Lockdown (#3) from 16 Nov to 22 Nov
Claiming period ended 27 Dec

**7,500 people have received at least
one COVID Disaster Payment.**

\$6.9m paid out as at 30 Jan 2022.

**\$0 paid in initial payments in the week
ending 30 Jan 2022.**

Cumulative payments made by Territory since
activation on 25 Aug 2021.



Victoria

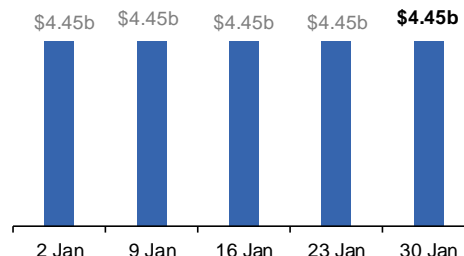
Lockdown (#6) from 6 Aug to 28 Oct
Claiming period ended 9 Dec

**745,000 people have received at least
one COVID Disaster Payment.**

\$4.45b paid out as at 30 Jan 2022.

**\$11,000 paid in initial and reoccurring
payments in the week ending
30 Jan 2022.**

Cumulative payments made by State since
activation on 8 Jun 2021.



New South Wales

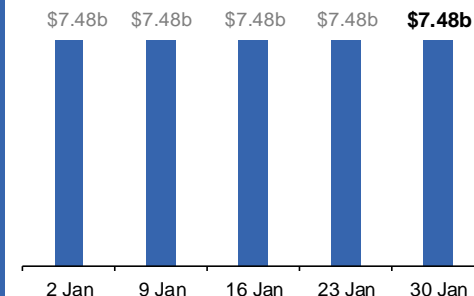
Lockdown from 24 Jun to 10 Oct
Claiming period ended 27 Nov

**1.08m people have received at least
one COVID Disaster Payment.**

\$7.48b paid out as at 30 Jan 2022.

**\$7,000 paid in initial and reoccurring
payments in the week ending
30 Jan 2022.**

Cumulative payments made by State since
activation on 1 Jul 2021.



Australian Capital Territory

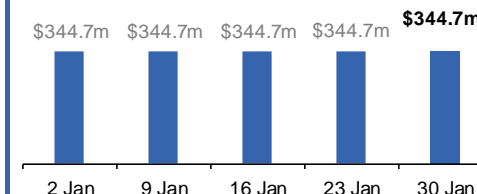
Lockdown from 12 Aug to 14 Oct
Claiming period ended 25 Nov

**65,000 people have received at least
one COVID Disaster Payment.**

\$344.7m paid out as at 30 Jan 2022.

**\$1,000 paid in initial and reoccurring
payments in the week ending
30 Jan 2022.**

Cumulative payments made by Territory since
activation on 20 Aug 2021.



Pandemic Response Payments (continued)

Data as at midnight:
30 Jan 2022
Updated weekly

COVID-19 DISASTER PAYMENTS

Tasmania

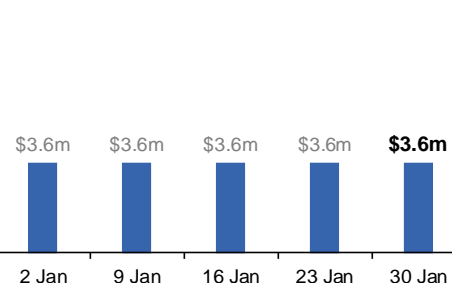
Lockdown from 15 Oct to 18 Oct
Claiming period ended 12 Nov

6,900 people have received at least one COVID Disaster Payment.

\$3.6m paid out as at 30 Jan 2022.

\$0 paid in initial and reoccurring payments in the week ending 30 Jan 2022.

Cumulative payments made by State since activation on 22 Oct 2021.



Queensland

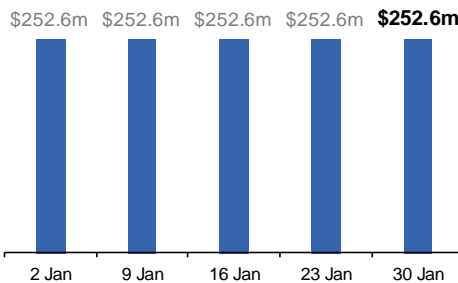
Lockdown from 31 Jul to 11 Aug
Claiming period ended 28 Aug

196,000 people have received at least one COVID Disaster Payment.

\$252.6m paid out as at 30 Jan 2022.

\$600 paid in initial and reoccurring payments in the week ending 30 Jan 2022.

Cumulative payments made by State since activation on 7 Aug 2021.



South Australia

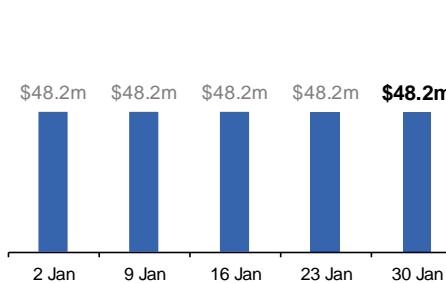
Lockdown from 21 to 27 Jul
Claiming period ended 17 Aug

86,000 people have received at least one COVID Disaster Payment.

\$48.2m paid out as at 30 Jan 2022.

\$600 paid in initial and reoccurring payments in the week ending 30 Jan 2022.

Cumulative payments made by State since activation on 28 Jul 2021.



Administration and Utilisation

Doses as at 30 January 2022

	Ordered	Available	Administered	Available minus Administered	Estimated Dose Utilisation %
	Up to 30/01/22	Delivered up to 23/01/22 including redistributions	Up to 30/01/22		(see note)
NSW	6,051,288	5,944,420	4,820,115	1,124,305	91%
VIC	6,795,554	6,431,854	5,507,587	924,267	96%
QLD	4,716,210	4,503,418	3,580,593	922,825	90%
WA	2,480,118	2,333,178	2,132,252	200,926	Fully utilised
SA	2,060,260	1,915,980	1,590,910	325,070	93%
TAS	610,740	588,510	554,731	33,779	Fully utilised
NT	359,284	334,636	283,319	51,317	95%
ACT	580,566	542,726	621,696	-	Fully utilised
Jurisdiction delivered total	23,654,020	22,594,722	19,091,203	3,503,519	94%
Commonwealth Aged Care & Disability	1,287,822	1,264,134	1,221,154	42,980	N/A
Commonwealth Primary Care & Other	42,467,526	40,791,232	29,351,778	11,439,454	82%
Total	67,409,368	64,650,088	49,664,135	14,985,953	87%

About this data

- Ordered – Total doses delivered to sites. Based on logistics provider data. This figure includes doses allocated for administration in the coming week.
- Available – total doses that could have been administered to date, less doses re-distributed from States & Territories to Primary Care or Aged Care & Disability (i.e. does not include those deliveries recently received, and intended for use in the coming week).
- Administered – Doses administered as at 30 January 2022.
- The dose utilisation is calculated based on the total doses administered and a small % wastage in line with international standards in relation to total available doses.
- For Aged Care & Disability, the doses available for administration is for the full period (up to 30 January 2022).
- Aged Care & Disability utilisation is not provided as the in-reach rollout is demand-based, with vaccines ordered based on resident numbers.