



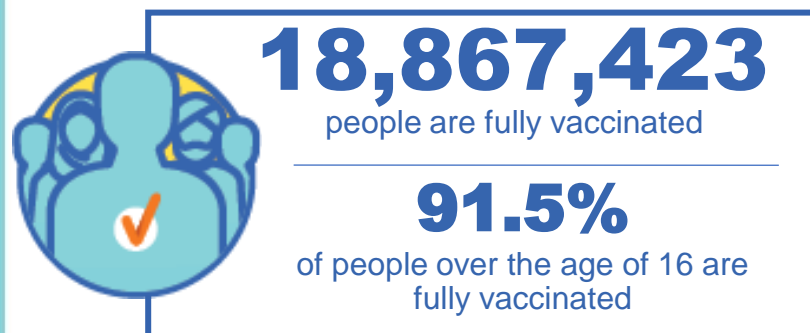
**Australian Government**  
**Operation COVID Shield**

# COVID-19 Vaccine Roll-out

03 January 2022

Data as at:  
02 Jan 2022

## Total vaccine doses



**42,787,000** total vaccine doses administered nationally as at 02 January

**+29,730** recorded in the last 24 hours

**NSW**  
**13,758,731**  
(+9,316 daily increase)

**VIC**  
**11,340,028**  
(+3,956 daily increase)

**QLD**  
**8,269,435**  
(+4,030 daily increase)

**WA**  
**4,120,530**  
(+7,406 daily increase)

**TAS**  
**940,782**  
(+261 daily increase)

**SA**  
**2,893,768**  
(+4,339 daily increase)

**ACT**  
**1,041,938**  
(+355 daily increase)

**NT**  
**421,788**  
(+67 daily increase)

\*Administration state breakdown indicates state in which a vaccine was administered

\*\*Overall dose count includes instances of more than two doses per person in a small number of cases.

Source: Australian Immunisation Register

Data as at:  
02 Jan 2022

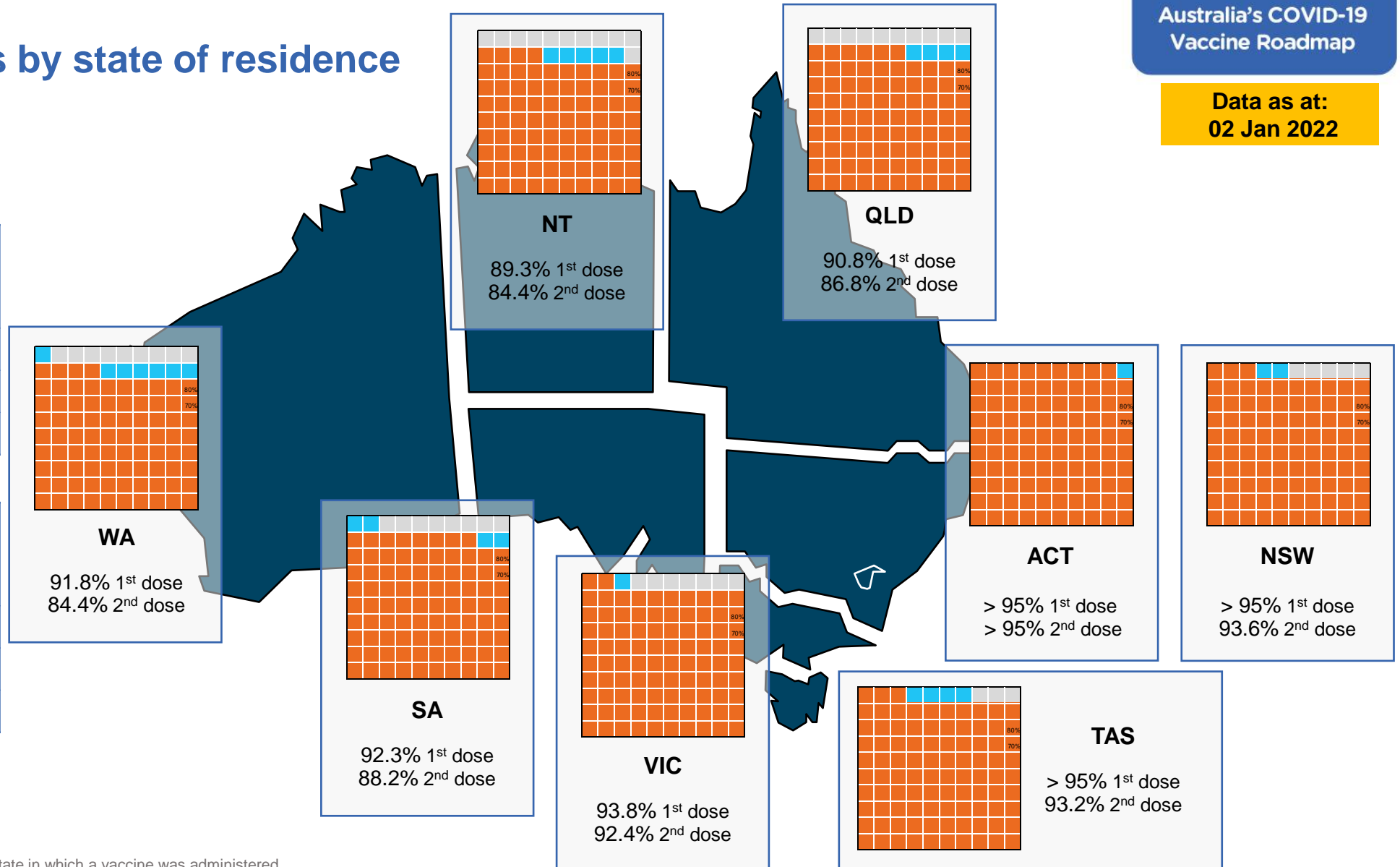
## Vaccinations by state of residence

### First doses

Age	Today	4 weeks ago	8 weeks ago
16+	94.4%	93.1%	89.8%
50+	>95%	>95%	>95%
70+	>95%	>95%	>95%

### Fully vaccinated

Age	Today	4 weeks ago	8 weeks ago
16+	91.5%	88.4%	81.3%
50+	>95%	95.0%	89.5%
70+	>95%	>95%	94.1%



\*Residential state may differ from the state in which a vaccine was administered

## Commonwealth and Jurisdiction vaccine doses administered

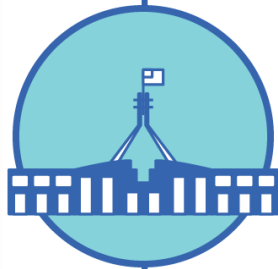
Data as at:  
02 Jan 2022



**42,787,000** total vaccine  
doses administered nationally as at 02 January  
**+ 29,730** recorded in the last 24 hours



**17,075,651**  
doses administered by state  
and territory facilities  
**+ 14,936**  
recorded in the last 24 hours



**25,711,349**  
doses administered by  
commonwealth facilities  
**+ 14,794**  
recorded in the last 24 hours  
**24,538,046** total vaccine doses  
administered in primary care settings  
**1,173,303** total vaccine doses  
administered in aged care and disability  
settings

NSW	Jurisdictions	Commonwealth
Cumulative	4,417,712	9,341,019
Daily increase	4,970	4,346

VIC	Jurisdictions	Commonwealth
Cumulative	4,940,235	6,399,793
Daily increase	479	3,477

QLD	Jurisdictions	Commonwealth
Cumulative	3,259,678	5,009,757
Daily increase	117	3,913

WA	Jurisdictions	Commonwealth
Cumulative	1,832,009	2,288,521
Daily increase	5,491	1,915

TAS	Jurisdictions	Commonwealth
Cumulative	493,272	447,510
Daily increase	0	261

SA	Jurisdictions	Commonwealth
Cumulative	1,352,726	1,541,042
Daily increase	3,672	667

ACT	Jurisdictions	Commonwealth
Cumulative	533,407	508,531
Daily increase	141	214

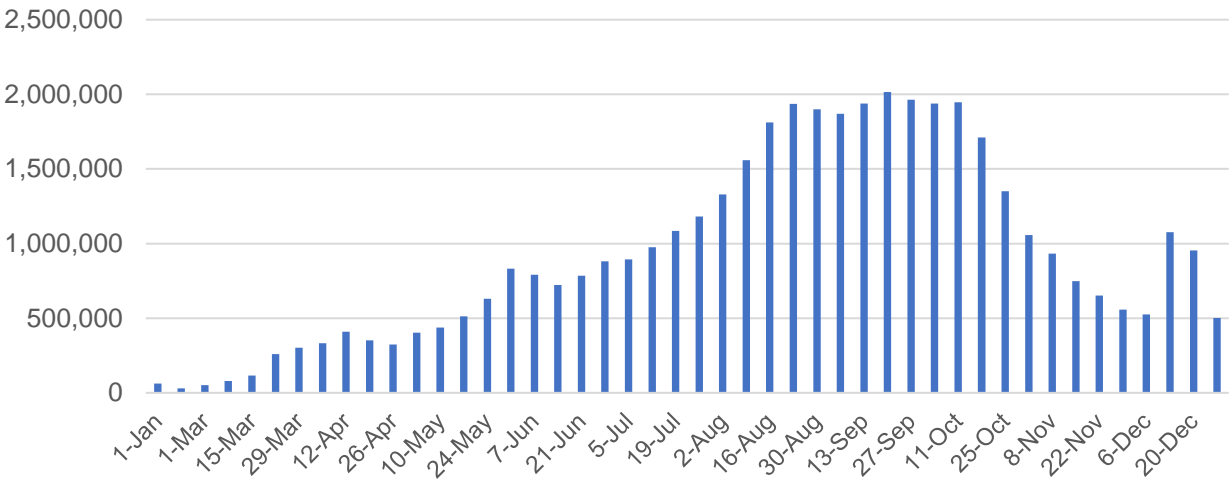
NT	Jurisdictions	Commonwealth
Cumulative	246,612	175,176
Daily increase	66	1

# Vaccine milestone charts

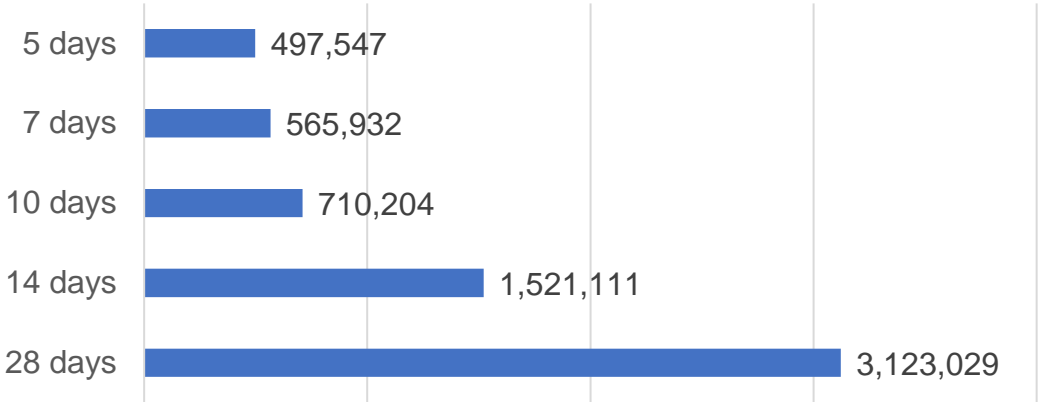
Data as at:  
02 Jan 2022

Australia's COVID-19  
Vaccine Roadmap

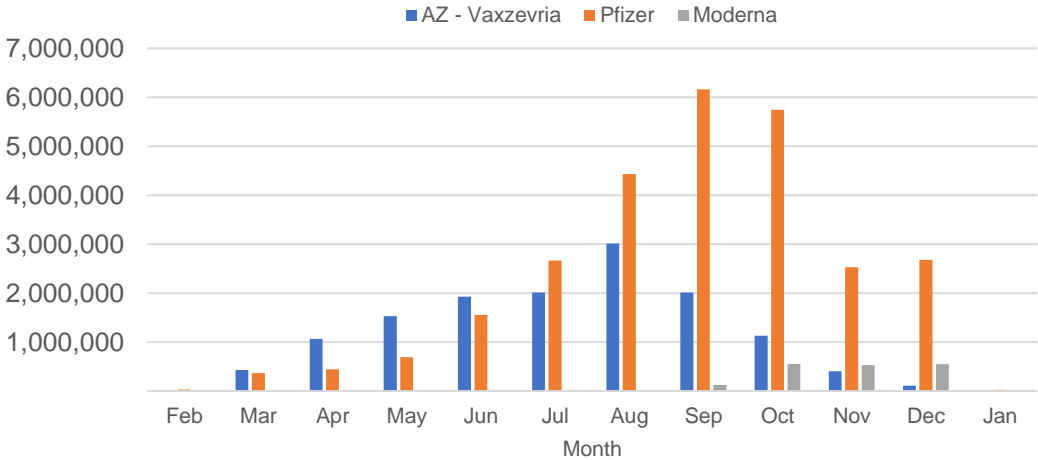
Doses Administered by Week



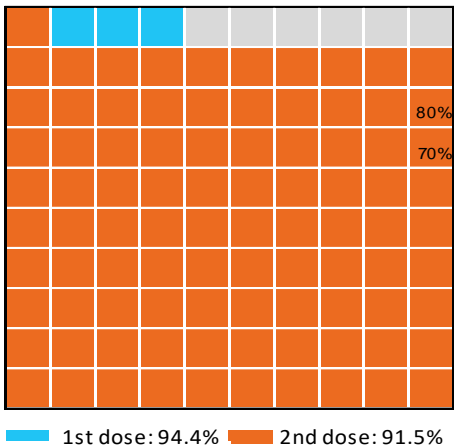
Doses Reported



Doses by administration month and vaccine type



Eligible population percentage coverage



\*Each square represents 1% of the national population. Squares are filled as milestones are achieved.

\*Sourced from the Australian Immunisation Register.

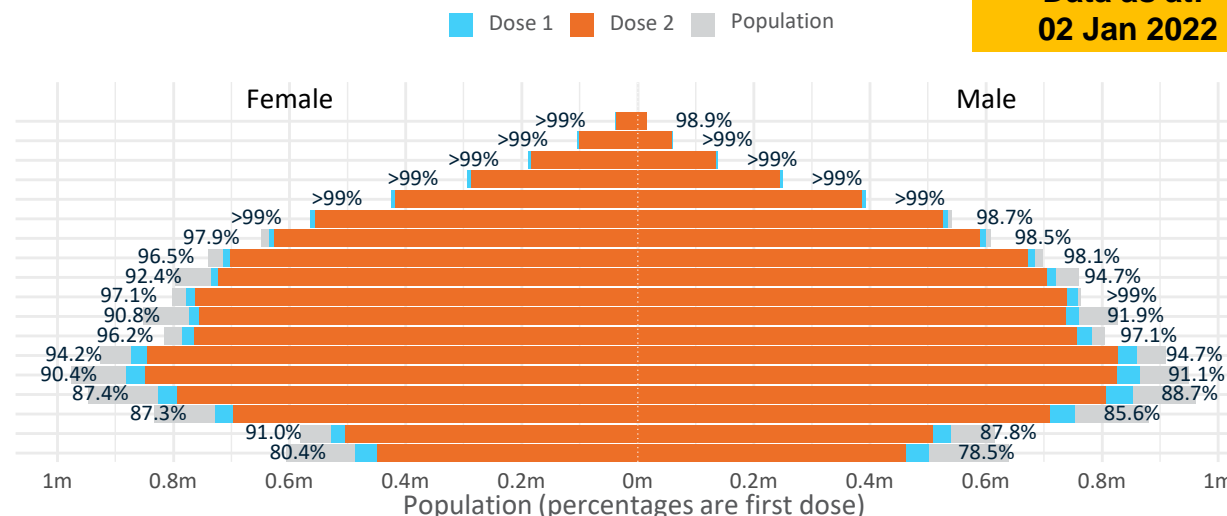
# Doses by age and sex

First and second doses by age and sex

Australia's COVID-19  
Vaccine Roadmap

Data as at:  
02 Jan 2022

Age	Dose 1	Dose 2
95+	54,791 (>99%)	50,990 (96.4%)
90-94	165,507 (>99%)	158,129 (>99%)
85-89	327,351 (>99%)	317,004 (>99%)
80-84	543,489 (>99%)	531,684 (>99%)
75-79	817,259 (>99%)	803,603 (>99%)
70-74	1,097,643 (>99%)	1,080,868 (97.8%)
65-69	1,236,394 (98.3%)	1,216,088 (96.7%)
60-64	1,398,956 (97.4%)	1,373,803 (95.6%)
55-59	1,456,559 (93.6%)	1,428,990 (91.9%)
50-54	1,536,764 (98.2%)	1,503,232 (96.1%)
45-49	1,533,160 (91.4%)	1,494,554 (89.1%)
40-44	1,568,340 (96.8%)	1,521,863 (93.9%)
35-39	1,737,606 (94.7%)	1,676,587 (91.4%)
30-34	1,753,316 (91.1%)	1,679,171 (87.3%)
25-29	1,689,016 (88.6%)	1,607,356 (84.3%)
20-24	1,486,212 (86.8%)	1,411,696 (82.4%)
16-19	1,069,253 (89.4%)	1,011,805 (84.6%)
12-15	988,618 (79.5%)	910,603 (73.2%)



	AUS	ACT	NSW	NT	QLD	SA	TAS	VIC	WA
16 and over - dose 1	19,471,616	347,175	6,238,242	170,087	3,732,736	1,330,048	430,494	5,074,608	1,941,204
16 and over - dose 2	18,867,423	342,311	6,145,117	160,861	3,570,592	1,269,921	410,103	4,998,359	1,784,852
16 and over - population	20,619,959*	344,037	6,565,651	190,571	4,112,707	1,440,400	440,172	5,407,574	2,114,978
16 and over % with dose 1	94.43%	>99%	95.01%	89.25%	90.76%	92.34%	97.80%	93.84%	91.78%
16 and over % with dose 2	91.50%	>99%	93.59%	84.41%	86.82%	88.16%	93.17%	92.43%	84.39%
50 and over - dose 1	8,634,713	134,521	2,783,293	56,755	1,692,063	654,252	215,817	2,183,691	856,895
50 and over - dose 2	8,464,391	132,961	2,750,870	55,016	1,650,252	635,598	210,150	2,156,511	821,080
50 and over - population	8,749,703	127,802	2,807,793	62,280	1,758,855	674,384	220,036	2,211,211	885,370
50 and over % with dose 1	98.69%	>99%	>99%	91.13%	96.20%	97.01%	98.08%	98.76%	96.78%
50 and over % with dose 2	96.74%	>99%	97.97%	88.34%	93.83%	94.25%	95.51%	97.53%	92.74%
70 and over - dose 1	3,006,040	43,965	986,338	11,712	580,805	244,863	79,262	755,375	281,816
70 and over - dose 2	2,942,278	43,305	971,517	11,341	566,804	237,605	77,044	743,257	271,793
70 and over - population	2,934,706	39,946	962,606	12,343	577,767	240,514	77,155	743,519	280,281
70 and over % with dose 1	>99%	>99%	>99%	94.89%	>99%	>99%	>99%	>99%	>99%
70 and over % with dose 2	>99%	>99%	>99%	91.88%	98.10%	98.79%	>99%	>99%	96.97%
12 to 15 - dose 1	988,618	19,719	317,841	9,980	190,014	62,076	20,768	270,940	89,692
12 to 15 - dose 2	910,603	19,064	304,732	8,636	169,432	54,902	18,591	257,600	71,338
12 to 15 - population	1,243,990	19,693	390,330	13,060	270,146	82,747	26,308	308,611	132,869
12 to 15 % with dose 1	79.47%	>99%	81.43%	76.42%	70.34%	75.02%	78.94%	87.79%	67.50%
12 to 15 % with dose 2	73.20%	96.81%	78.07%	66.13%	62.72%	66.35%	70.67%	83.47%	53.69%

\*National population will not equal sum of listed jurisdictions due to a small number of people counted in national population residing in some 'other' territories. Due to data revisions Singapore has been removed. Sum of state doses will not add to national total as some records are unable to be geocoded to a State or Territory.  
Doses sourced from Australian Immunisation Register, population from ABS ERP June 2020

# Aboriginal and Torres Strait Islander peoples

## Number of people vaccinated

Data as at:  
28 Dec 2021  
Updated weekly

Australia's COVID-19  
Vaccine Roadmap



**415,514**

people over the age of 16  
have had at least one dose

**78.8%**

of people over the age of 16  
have had at least one dose



**374,181**

people over the age of 16  
are fully vaccinated

**71.1%**

of people over the age of 16 are  
fully vaccinated



**42,469  
(59.4%)**

people aged 12-15 years  
have had at least one dose

## 173 Aboriginal community controlled health services (ACCHS)

0#	50	27	41	12	3	21	19
<b>ACT</b>	<b>NSW</b>	<b>NT</b>	<b>QLD</b>	<b>SA</b>	<b>TAS</b>	<b>VIC</b>	<b>WA</b>

Medicare Address State <sup>##</sup>	Individuals Dose 1	Individuals Dose 1 %	Individuals Dose 2	Individuals Dose 2 %
Australian Capital Territory	4,953	90.7%	4,800	87.9%
New South Wales	137,647	86.2%	133,561	83.7%
Northern Territory	39,591	84.2%	34,497	73.4%
Queensland	108,070	75.4%	93,797	65.4%
South Australia	18,694	73.6%	16,211	63.8%
Tasmania	14,416	84.9%	13,336	78.5%
Victoria	35,757	88.6%	34,561	85.6%
Western Australia	42,332	66.4%	32,420	50.8%
Unknown/Other Territories	14,054	56.0%	10,998	43.8%
<b>Totals</b>	<b>415,514</b>	<b>78.8%</b>	<b>374,181</b>	<b>71.0%</b>

Source: Australian Immunisation Register

\*Identifying as Aboriginal and Torres Strait Islander is optional and the estimated population may be under reported.

\*\*Includes all Aboriginal and Torres Strait Islander peoples who have received a vaccination, not limited to those administered in an ACCHS setting

#ACCHS in the ACT are currently operating as a Commonwealth Vaccine Clinics so not included to avoid double counting

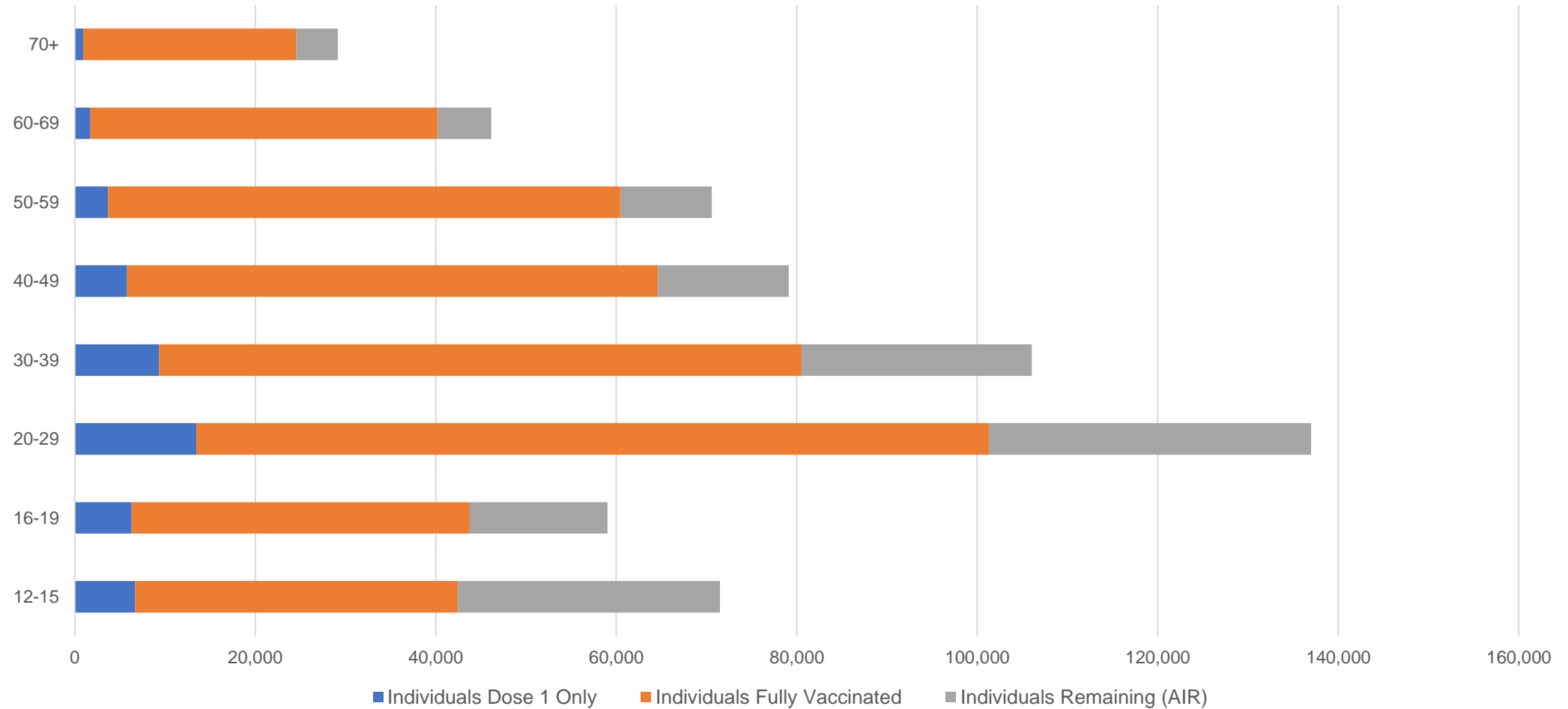
##The above table includes all identified Aboriginal and Torres Strait Islander people who are aged 16 and above by their state of residence.

# Aboriginal and Torres Strait Islander peoples

## Number of people vaccinated by age

Data as at:  
28 Dec 2021  
Updated weekly

Australia's COVID-19  
Vaccine Roadmap



Source: Australian Immunisation Register



Data as at:  
02 Jan 2022

## Commonwealth primary care



### Primary care vaccine administration sites

<b>5,674</b>	<b>137</b>	<b>173</b>	<b>3,472</b>
GPs	CVCs	ACCHS	Pharmacies



**24,538,046** total vaccine doses administered  
primary care settings as at 02 January  
**+ 14,792** recorded in the last 24 hours

### Primary care vaccinations by provider type

	Doses administered	Daily increase	7 day increase
<b>General Practice*</b> includes other Commonwealth	21,302,456	6,634	187,580
<b>Pharmacy</b>	3,235,590	8,158	198,899

**NSW**  
**8,827,108**  
(+3,464 daily increase)

**VIC**  
**6,138,354**  
(+2,903 daily increase)

**QLD**  
**4,770,925**  
(+3,182 daily increase)

**WA**  
**2,186,521**  
(+1,668 daily increase)

**TAS**  
**432,406**  
(+221 daily increase)

**SA**  
**1,471,007**  
(+610 daily increase)

**ACT**  
**382,270**  
(+161 daily increase)

**NT**  
**155,619**  
(+4 daily increase)

**173,836**

doses administered to persons  
residing in other territories or with  
missing residential information

\*General practice includes Commonwealth Vaccination Clinics, Aboriginal Community Health Centres, Royal Flying Doctor Service and other Commonwealth vaccination facilities

Source: Australian Immunisation Register

Data as at:  
02 Jan 2022

# Commonwealth aged care and disability doses administered



**1,173,303** (+ 2 last 24 hours)

Total vaccine doses administered in aged care and disability facilities as at 02 January

Number of doses administered as part of the Commonwealth aged and disability care rollout

**NSW**  
**537,634**  
(-29<sup>#</sup> daily increase)

**VIC**  
**218,316**  
(-26<sup>#</sup> daily increase)

**QLD**  
**183,226**  
(-23<sup>#</sup> daily increase)

**WA**  
**84,614**  
(-3<sup>#</sup> daily increase)

**TAS**  
**21,089**  
(-7<sup>#</sup> daily increase)

**SA**  
**78,139**  
(+0 daily increase)

**ACT**  
**15,353**  
(-2<sup>#</sup> daily increase)

**NT**  
**6,644**  
(+1 daily increase)

**28,288**

doses administered to persons  
residing in other territories or with  
missing residential information

Source: Australian Immunisation Register

\*Sourced from the Australian Immunisation Register. Includes all persons vaccinated at participating residential aged care, disability and related industry settings.

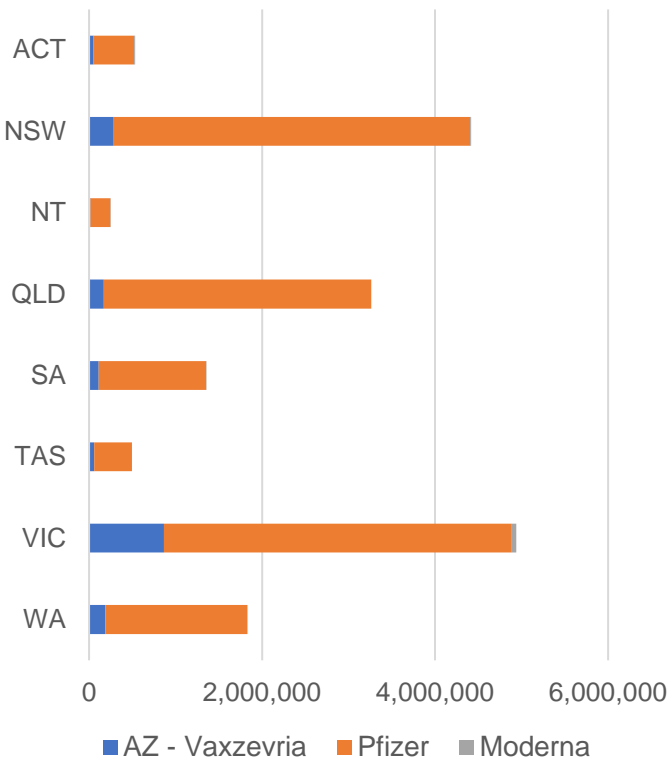
\*\*State level breakdown indicates the residential location and may not align to the state in which the vaccination occurred.

#Numbers are calculated as difference in daily cumulative reported numbers to allow for historical corrections in all data sources. This can occasionally result in negative numbers, such as for NSW, VIC, QLD, WA, TAS and ACT, where historical details about doses have been updated.

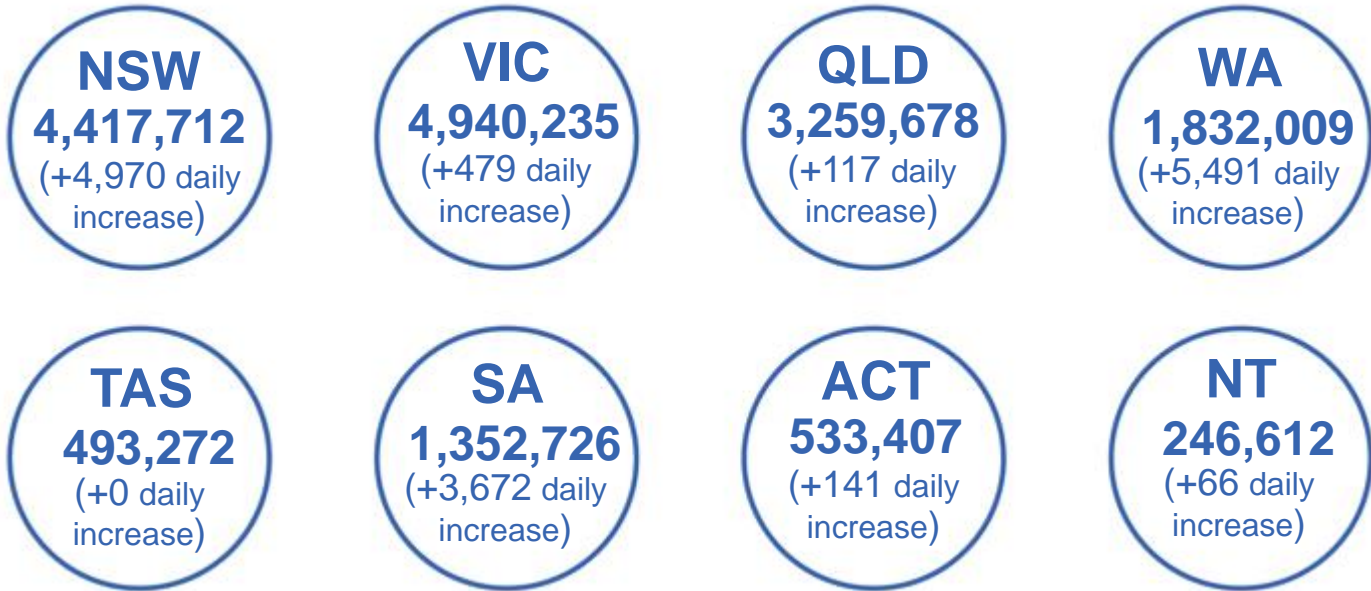
Data as at:  
02 Jan 2022

# Jurisdiction administered

Total vaccine doses administered in State and Territory clinics as at 02 January



**17,075,651** total vaccine doses administered in State and Territory clinics as at 02 January  
 + **14,936** recorded in the last 24 hours  
 + **179,017** recorded in the last 7 days



\*Sourced from the Australian Immunisation Register and self-reported data. Numbers are calculated as difference in daily cumulative reported numbers to allow for historical corrections in all self-reported data sources.

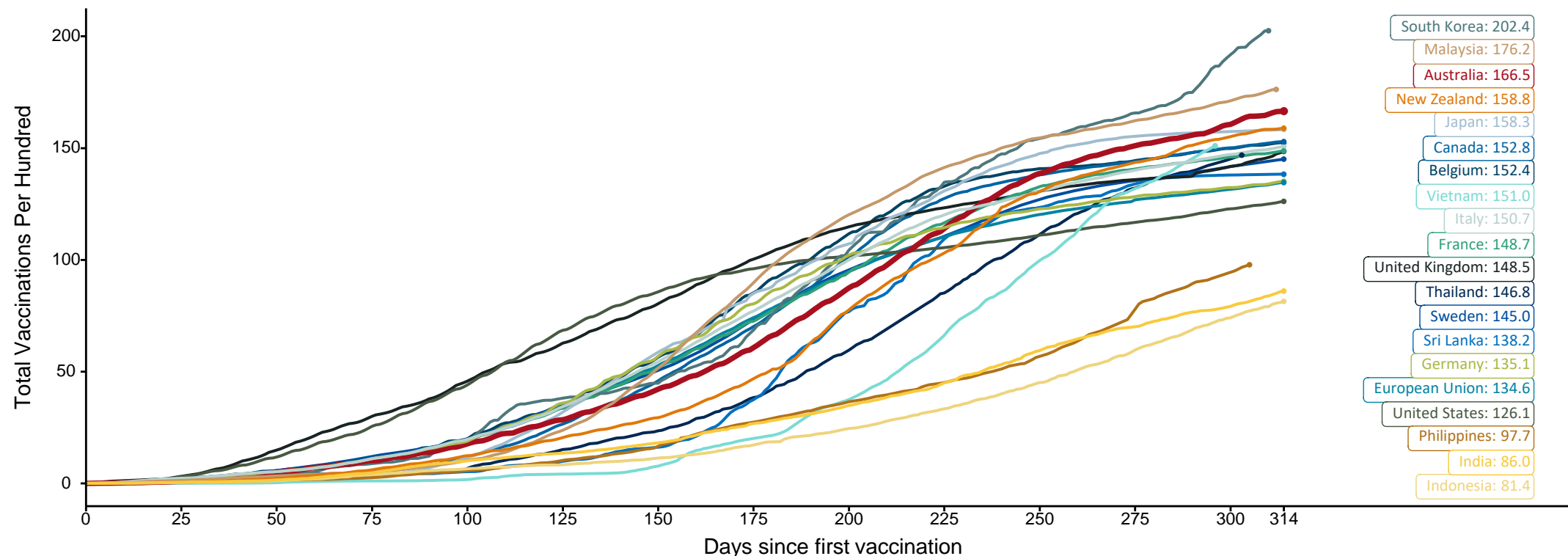
Source: Australian Immunisation Register

# Doses at equivalent stages of rollout (Day 314)

Data as at:  
02 Jan 2022

The x-axis is truncated at the length of Australia's vaccination program. Countries with intermittent reporting have had their doses per 100 imputed to Australia's current stage of rollout. Israel excluded as it is beyond scale of the graph

Cumulative doses administered (02 Jan): **42,787,000**

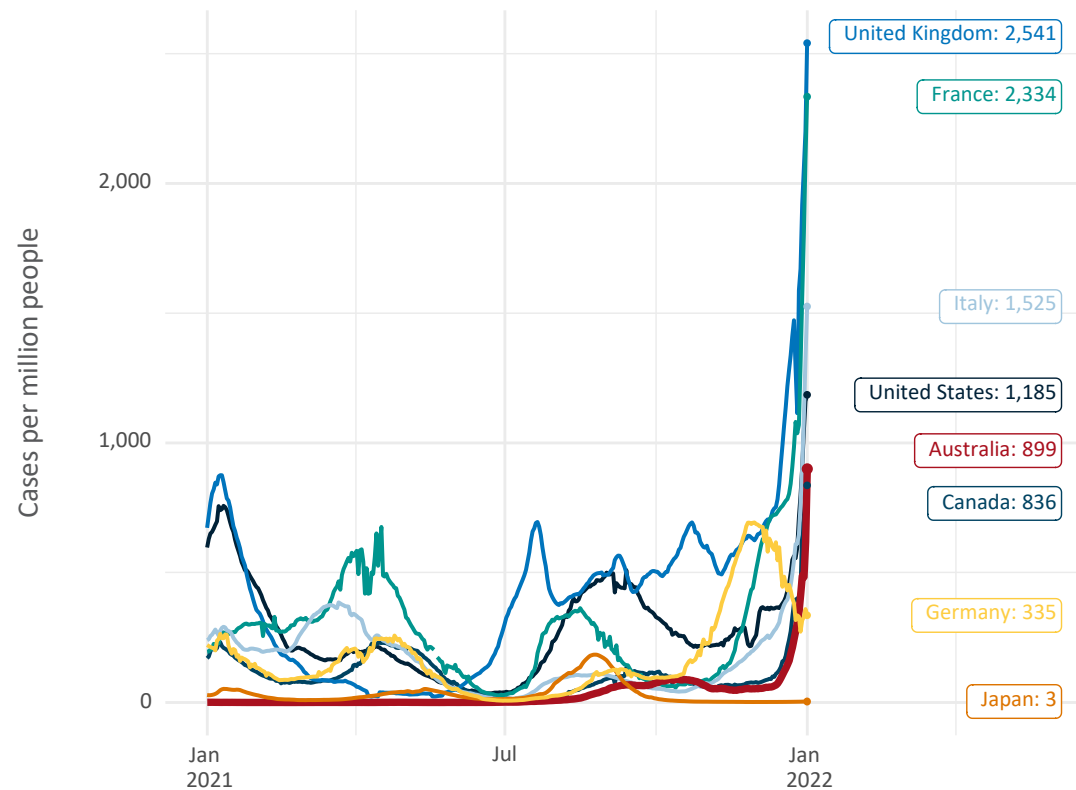


Note: From 15 September 2021, data for Australia includes all doses administered to people 12 and over. Prior to 15 September, data was for 16 and over  
 Due to data revisions, Singapore has been removed from the chart  
 Source: Department of Health (Australia), Our World in Data (international)  
 Latest data: 02 January

# International data – COVID-19

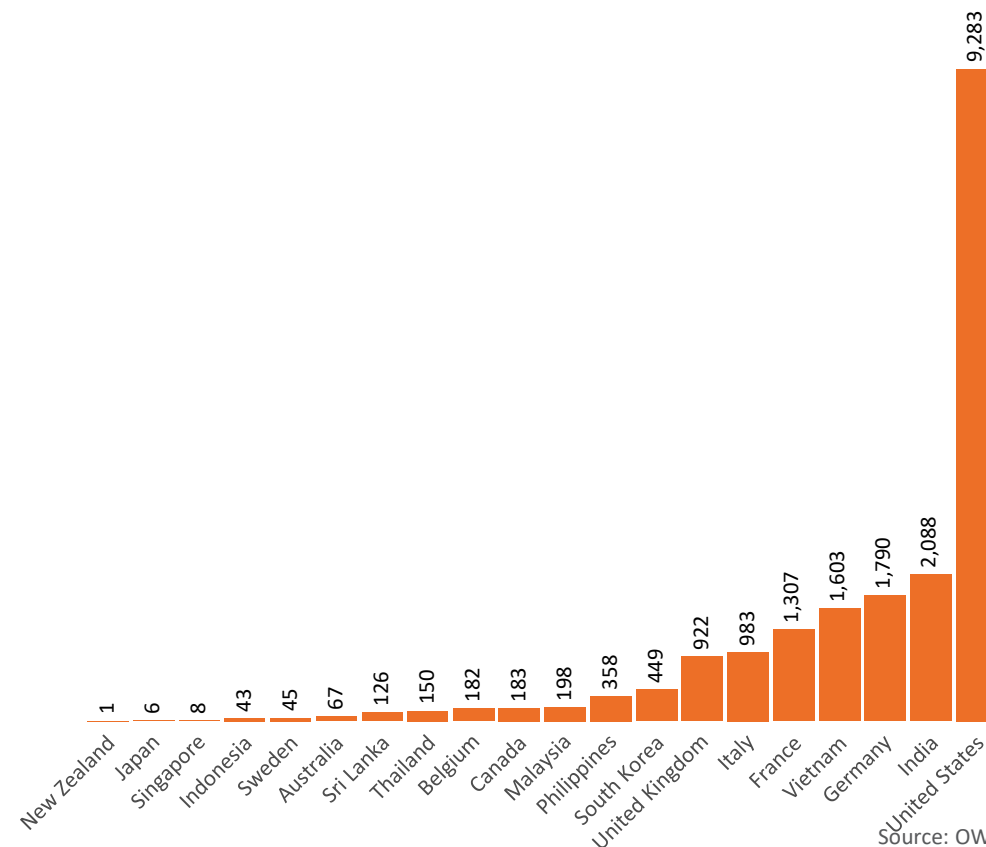
Data as at:  
02 Jan 2022

New daily cases per million in 2021, Australia and G7 countries  
Smoothed - 7 day average



Source: OWID  
Data downloaded: 03 Jan 2022 08:06  
Latest data: 01 Jan 2022

COVID-19 deaths in past 7 days - Australia and select countries



Source: OWID  
Data downloaded: 03 Jan 2022 08:06  
Latest data: 01 Jan 2022