



Australian Government
Operation COVID Shield

COVID-19 Vaccine Rollout

27 January 2022

Data as at:
26 Jan 2022

Total vaccine doses



48,784,315 total vaccine doses administered nationally as at 26 January
+82,709 recorded in the last 24 hours



19,681,437

people have had at least one dose

>95%

of people over the age of 16 have had at least one dose



19,197,858

people are fully vaccinated

93.1%

of people over the age of 16 are fully vaccinated



7,100,976

people over the age of 18 who have received more than two doses

NSW
15,495,584
(+11,271 daily increase)

VIC
12,861,478
(+29,237 daily increase)

QLD
9,417,349
(+14,902 daily increase)

WA
4,909,772
(+12,189 daily increase)

TAS
1,079,979
(+2,582 daily increase)

SA
3,346,302
(+7,413 daily increase)

ACT
1,198,003
(+4,368 daily increase)

NT
475,848
(+747 daily increase)

*Administration state breakdown indicates state in which a vaccine was administered

**Overall dose count includes instances of more than two doses per person in a small number of cases.

Source: Australian Immunisation Register

Booster Vaccinations

Data as at:
26 Jan 2022



7,100,976 total people over the age of 18 years old who have received more than two doses nationally

+59,751 people who have received more than two doses nationally in the last 24 hours

NSW
2,322,363
(9,471 daily increase)

VIC
1,874,152
(22,760 daily increase)

QLD
1,303,696
(9,819 daily increase)

WA
678,978
(6,938 daily increase)

TAS
156,193
(2,161 daily increase)

SA
516,843
(5,063 daily increase)

ACT
149,323
(2,589 daily increase)

NT
57,382
(281 daily increase)

42,046 doses administered to persons residing in other territories or with missing residential information

Source: Australian Immunisation Register

Data as at: 26 Jan 2022

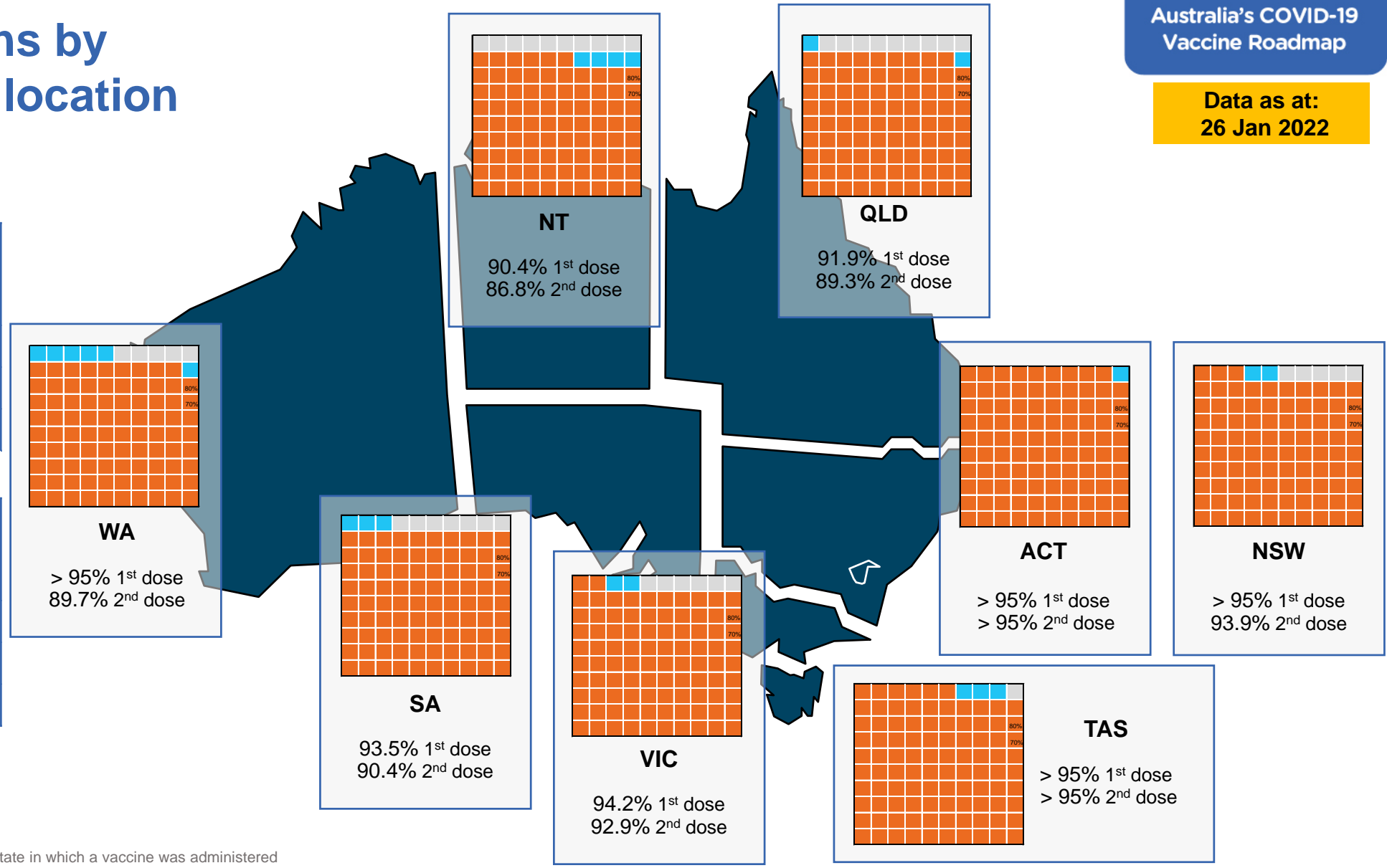
Vaccinations by residential location

First doses

Age	Today	4 weeks ago	8 weeks ago
16+	>95%	94.5%	93.0%
50+	>95%	>95%	>95%
70+	>95%	>95%	>95%

Fully vaccinated

Age	Today	4 weeks ago	8 weeks ago
16+	93.1%	91.6%	88.0%
50+	>95%	>95%	94.9%
70+	>95%	>95%	>95%



*Residential state may differ from the state in which a vaccine was administered

Commonwealth and Jurisdiction vaccine doses administered

Data as at:
26 Jan 2022



48,784,315 total vaccine doses administered nationally as at 26 January

+ 82,709 recorded in the last 24 hours



18,825,391 doses administered by state and territory facilities

+ 45,368 recorded in the last 24 hours



29,958,924 doses administered by commonwealth facilities

+ 37,341 recorded in the last 24 hours

28,748,512 total vaccine doses administered in primary care settings

1,210,412 total vaccine doses administered in aged care and disability settings

NSW	Jurisdictions	Commonwealth
Cumulative	4,761,923	10,733,661
Daily increase	411	10,860

VIC	Jurisdictions	Commonwealth
Cumulative	5,426,122	7,435,356
Daily increase	16,342	12,895

QLD	Jurisdictions	Commonwealth
Cumulative	3,547,852	5,869,497
Daily increase	9,370	5,532

WA	Jurisdictions	Commonwealth
Cumulative	2,092,895	2,816,877
Daily increase	7,450	4,739

TAS	Jurisdictions	Commonwealth
Cumulative	548,048	531,931
Daily increase	1,926	656

SA	Jurisdictions	Commonwealth
Cumulative	1,562,119	1,784,183
Daily increase	6,061	1,352

ACT	Jurisdictions	Commonwealth
Cumulative	608,027	589,976
Daily increase	3,645	723

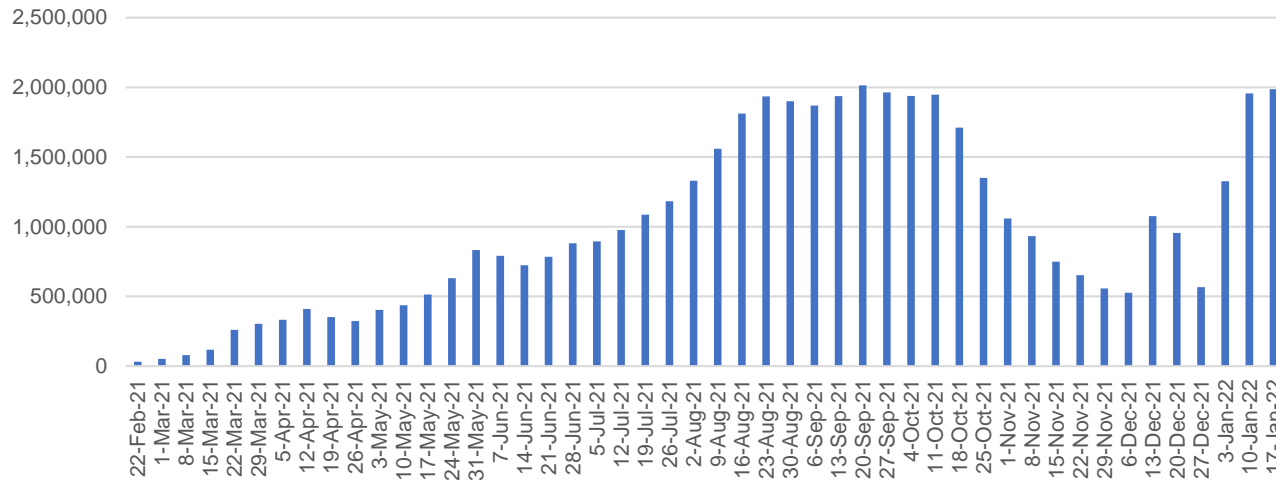
NT	Jurisdictions	Commonwealth
Cumulative	278,405	197,443
Daily increase	163	584

Vaccine milestone charts

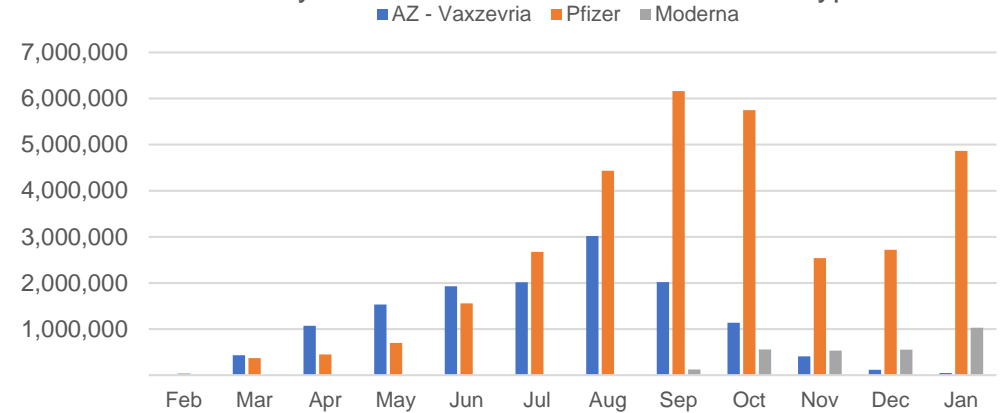
Data as at:
26 Jan 2022

Australia's COVID-19
Vaccine Roadmap

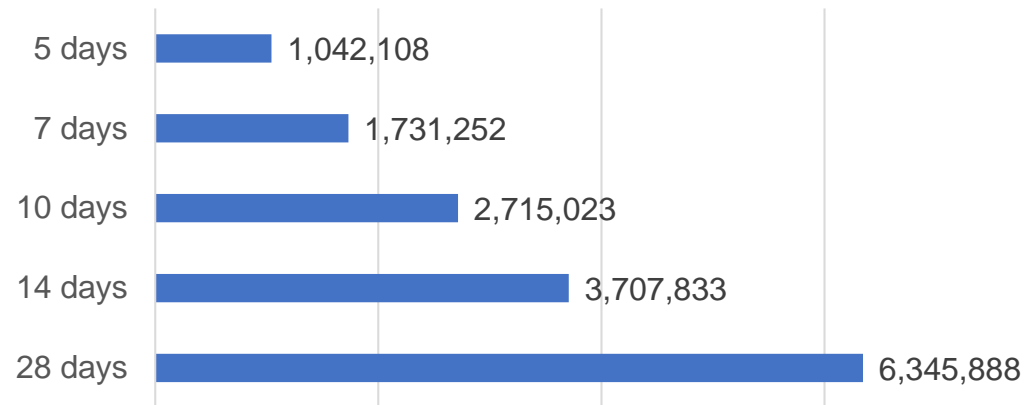
Doses Administered by Week



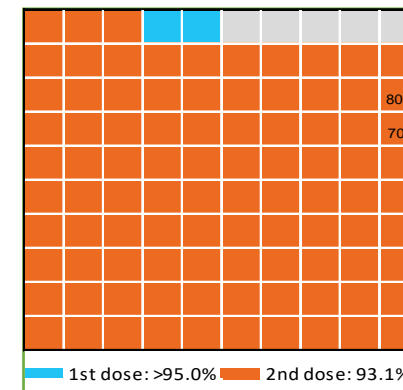
Doses by administration month and vaccine type



Doses Reported



Eligible population percentage coverage



*Sourced from the Australian Immunisation Register.

*Each square represents 1% of the national population. Squares are filled as milestones are achieved.

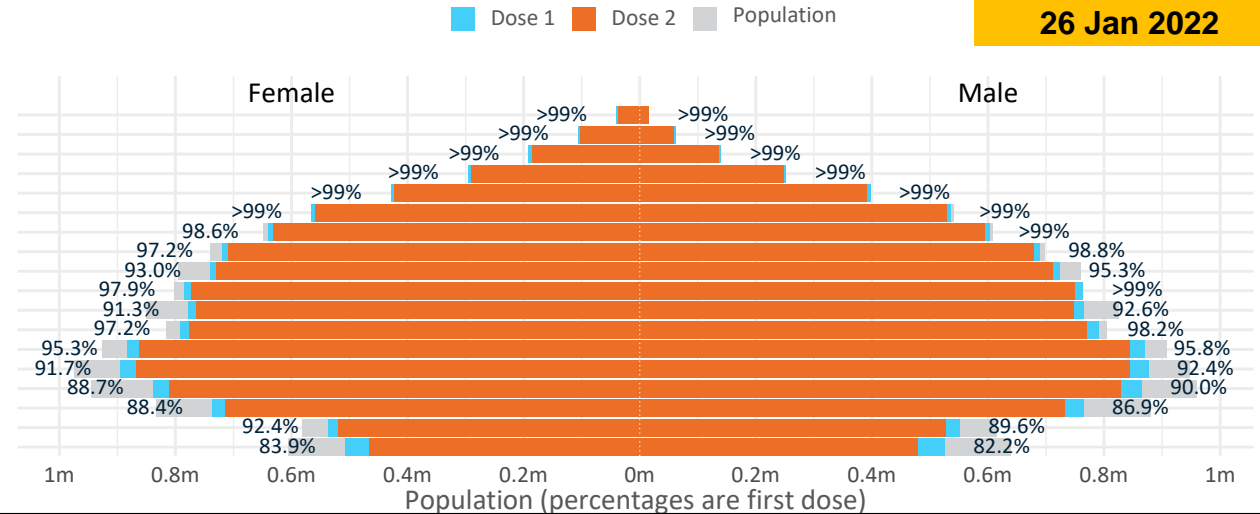
Data as at:
26 Jan 2022

Doses by age and sex

First and second doses by age and sex

	16+	50+	12-15	5-11
Dose 1	95.45% (19,681,437 doses / 20,619,959 people)	>99% (8,705,077 doses / 8,749,703 people)	83.06% (1,033,271 doses / 1,243,990 people)	34.07% (775,733 doses / 2,276,638 people)
Dose 2	93.10% (19,197,858 doses / 20,619,959 people)	97.83% (8,560,189 doses / 8,749,703 people)	75.95% (944,836 doses / 1,243,990 people)	

Age	Dose 1	Dose 2
95+	56,437 (>99%)	52,703 (>99%)
90-94	168,482 (>99%)	161,526 (>99%)
85-89	331,775 (>99%)	322,397 (>99%)
80-84	548,567 (>99%)	538,376 (>99%)
75-79	826,866 (>99%)	815,223 (>99%)
70-74	1,102,764 (>99%)	1,088,059 (98.5%)
65-69	1,245,324 (99.0%)	1,227,301 (97.5%)
60-64	1,409,515 (98.1%)	1,388,123 (96.6%)
55-59	1,465,565 (94.2%)	1,442,873 (92.8%)
50-54	1,549,782 (>99%)	1,523,608 (97.4%)
45-49	1,543,834 (92.1%)	1,514,090 (90.3%)
40-44	1,585,776 (97.9%)	1,549,079 (95.6%)
35-39	1,758,239 (95.8%)	1,709,841 (93.2%)
30-34	1,778,821 (92.5%)	1,718,478 (89.3%)
25-29	1,714,130 (89.9%)	1,648,698 (86.5%)
20-24	1,506,672 (88.0%)	1,450,648 (84.7%)
16-19	1,088,888 (91.1%)	1,046,835 (87.5%)
12-15	1,033,271 (83.1%)	944,836 (76.0%)

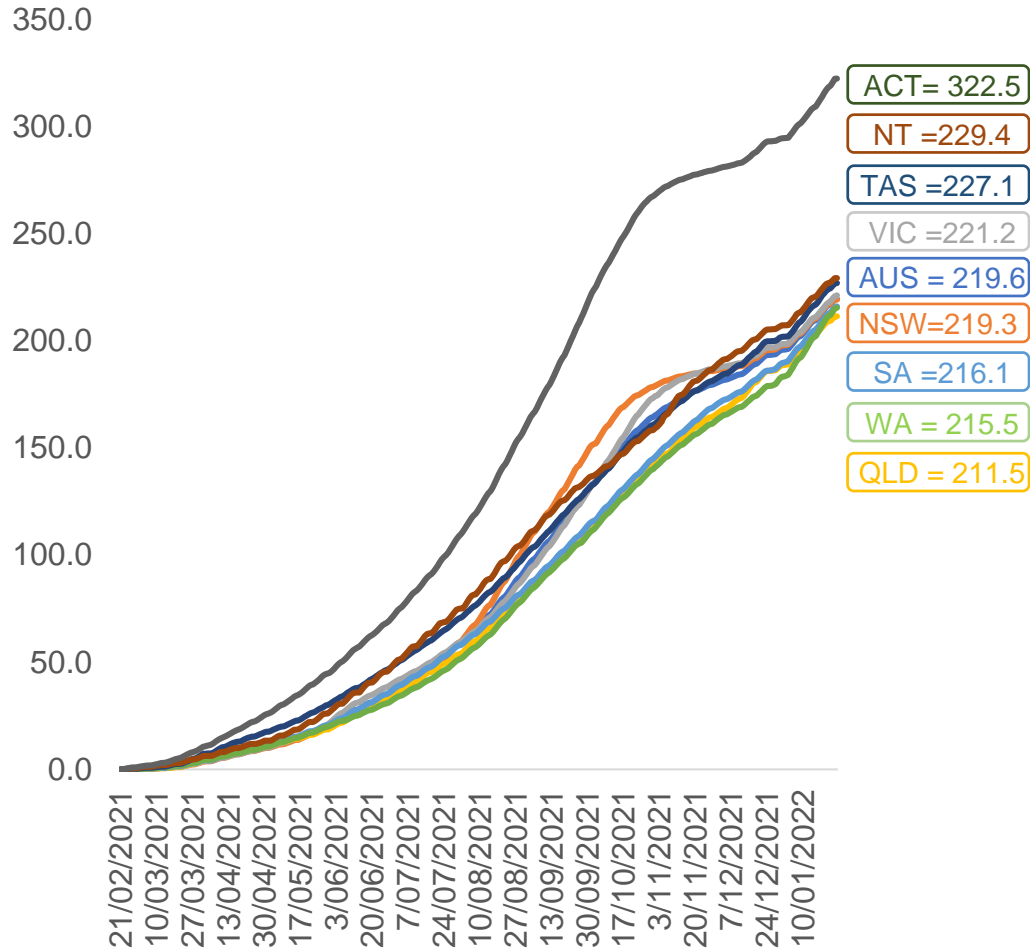


	AUS	ACT	NSW	NT	QLD	SA	TAS	VIC	WA
16 and over - dose 1	19,681,437	348,539	6,261,645	172,358	3,779,573	1,347,346	436,770	5,093,657	2,018,383
16 and over - dose 2	19,197,858	343,733	6,167,999	165,373	3,673,918	1,301,815	422,432	5,021,710	1,897,600
16 and over - population	20,619,959*	344,037	6,565,651	190,571	4,112,707	1,440,400	440,172	5,407,574	2,114,978
16 and over % with dose 1	95.45%	>99%	95.37%	90.44%	91.90%	93.54%	>99%	94.19%	95.43%
16 and over % with dose 2	93.10%	>99%	93.94%	86.78%	89.33%	90.38%	95.97%	92.86%	89.72%
5 to 11 - dose 1	775,733	23,880	239,069	8,318	144,152	55,219	19,993	215,549	65,522
5 to 11 - population	2,276,638	39,789	716,460	24,750	478,731	148,816	45,033	578,499	244,154
5 to 11 % with dose 1	34.07%	60.02%	33.37%	33.61%	30.11%	37.11%	44.40%	37.26%	26.84%
12 to 15 - dose 1	1,033,271	19,918	323,712	10,643	202,925	66,651	22,149	273,996	104,395
12 to 15 - dose 2	944,836	19,130	305,735	9,176	180,472	59,384	19,823	260,374	83,362
12 to 15 - population	1,243,990	19,693	390,330	13,060	270,146	82,747	26,308	308,611	132,869
12 to 15 % with dose 1	83.06%	>99%	82.93%	81.49%	75.12%	80.55%	84.19%	88.78%	78.57%
12 to 15 % with dose 2	75.95%	97.14%	78.33%	70.26%	66.81%	71.77%	75.35%	84.37%	62.74%

*National population will not equal sum of listed jurisdictions due to a small number of people counted in national population residing in some 'other' territories. Sum of state doses will not add to national total as some records are unable to be geocoded to a State or Territory.
Doses sourced from Australian Immunisation Register, population from ABS ERP June 2020

Vaccinations by location

Cumulative total doses administered vs eligible state populations*

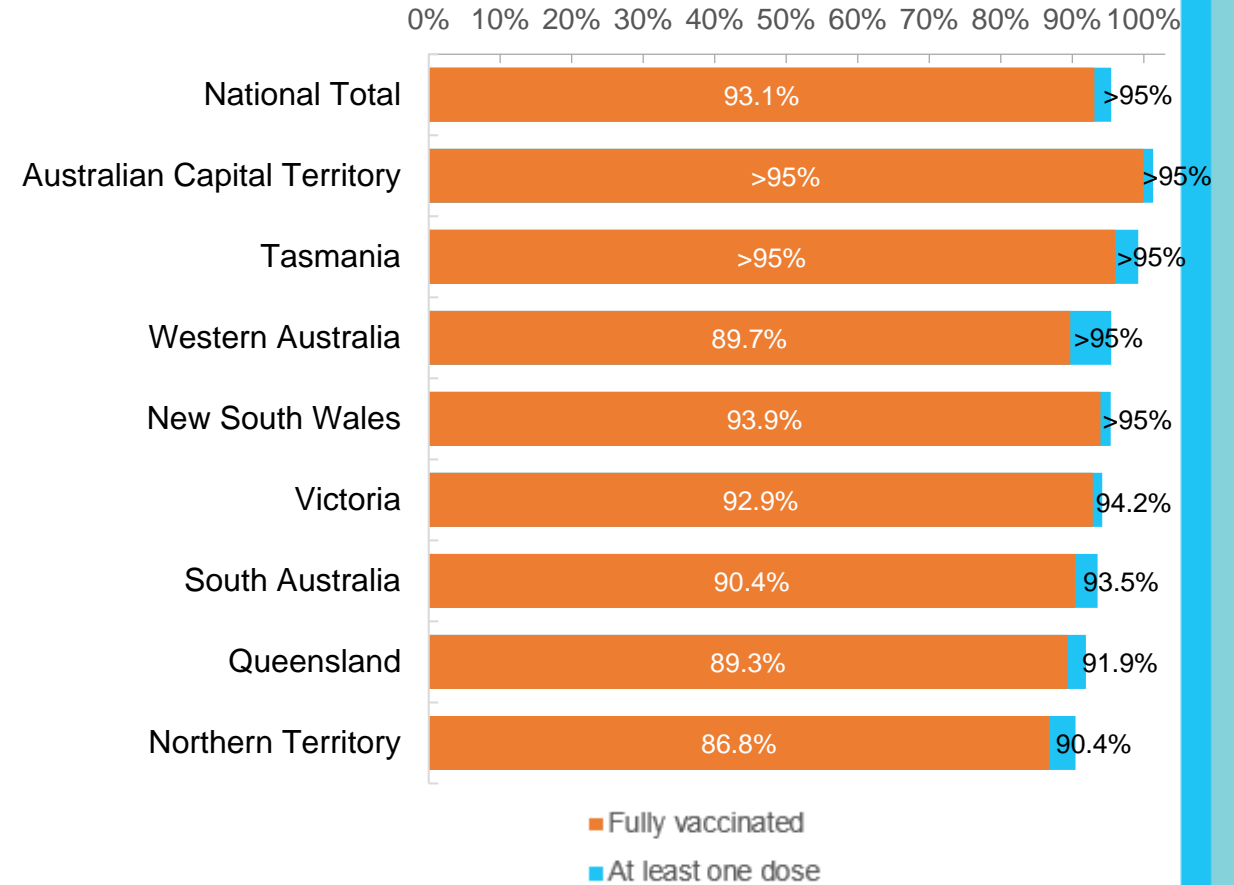


*Not an indication of percentage vaccinated, numbers will exceed 100 due to multiple doses required per person of the population. All doses are included for those aged 12 and above, and are based on vaccination provider location.

Data as at:
26 Jan 2022

Australia's COVID-19
Vaccine Roadmap

First and Second Doses by residential location



Aboriginal and Torres Strait Islander peoples

Number of people vaccinated

Data as at:
25 Jan 2022
Updated weekly

Australia's COVID-19
Vaccine Roadmap



425,024

people over the age of 16
have had at least one dose

81.4%

of people over the age of 16
have had at least one dose



392,161

people over the age of 16
are fully vaccinated

75.1%

of people over the age of 16 are
fully vaccinated



45,600
(64.1%)

people aged 12-15 years
have had at least one dose

173 Aboriginal community controlled health services (ACCHS)###

0#	50	27	41	12	3	21	19
ACT	NSW	NT	QLD	SA	TAS	VIC	WA

Medicare Address State##	Individuals Dose 1	Individuals Dose 1 %	Individuals Dose 2	Individuals Dose 2 %
Australian Capital Territory	4,890	91.0%	4,745	88.3%
New South Wales	135,911	86.4%	132,177	84.0%
Northern Territory	41,106	87.1%	37,208	78.8%
Queensland	112,091	78.7%	102,361	71.9%
South Australia	19,274	76.8%	17,114	68.2%
Tasmania	14,399	87.0%	13,626	82.3%
Victoria	35,277	88.9%	34,261	86.3%
Western Australia	46,602	73.8%	37,869	60.0%
Unknown/Other Territories	15,474	60.4%	12,800	50.0%
Totals	425,024	81.4%	392,161	75.1%

Source: Australian Immunisation Register

*Identifying as Aboriginal and Torres Strait Islander is optional and the estimated population may be under reported.

**Includes all Aboriginal and Torres Strait Islander peoples who have received a vaccination, not limited to those administered in an ACCHS setting

#ACCHS in the ACT are currently operating as a Commonwealth Vaccine Clinics so not included to avoid double counting

##The above table includes all identified Aboriginal and Torres Strait Islander people who are aged 16 and above by their state of residence.

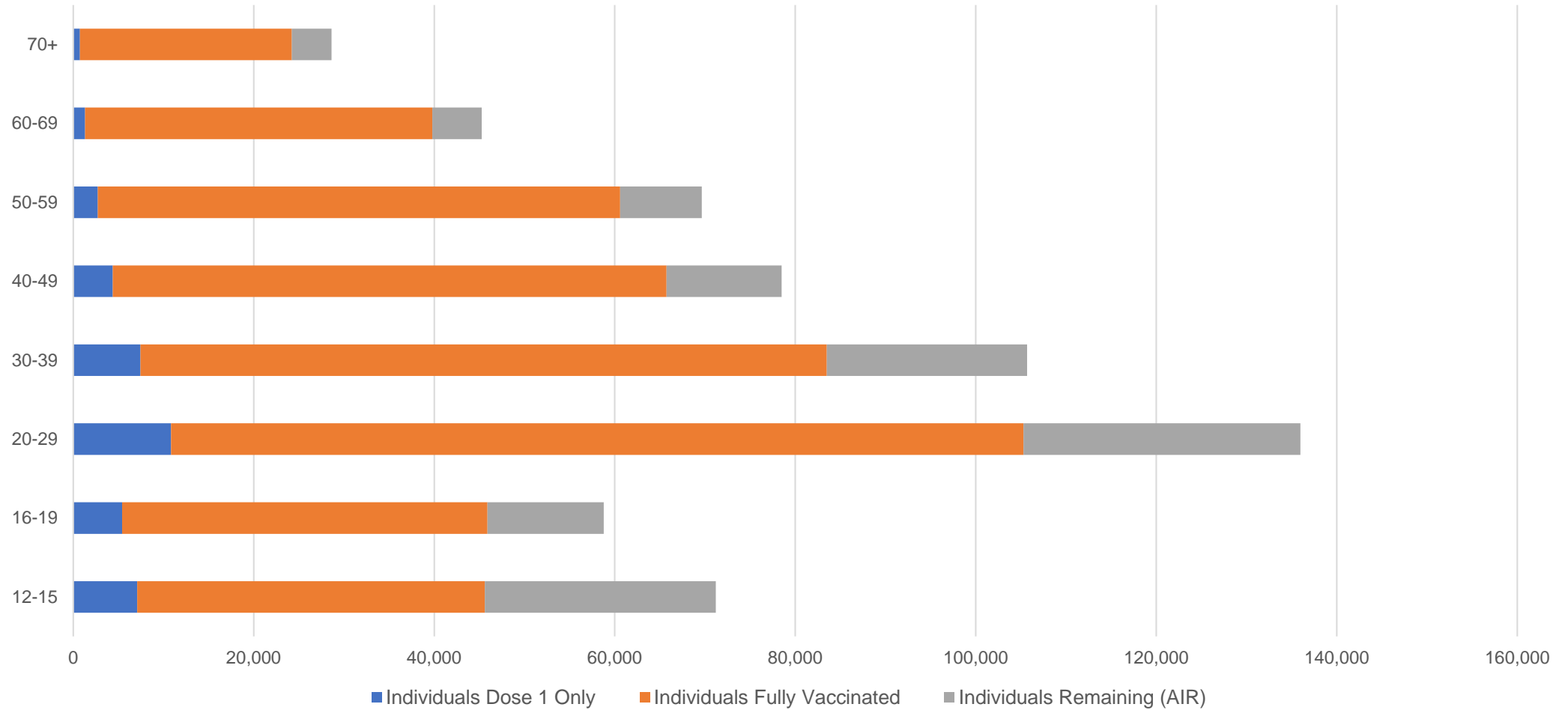
Site numbers current as at 18 January 2022.

Aboriginal and Torres Strait Islander peoples

Number of people vaccinated by age

Data as at:
25 Jan 2022
Updated weekly

Australia's COVID-19
Vaccine Roadmap



Source: Australian Immunisation Register

Commonwealth primary care

Data as at:
26 Jan 2022

Australia's COVID-19
Vaccine Roadmap



Primary care vaccine administration sites

5,714	128	174	3,494
GPs	CVCs	ACCHS	Pharmacies



28,748,512 total vaccine doses administered
primary care settings as at 26 January

+ 36,163 recorded in the last 24 hours

Primary care vaccinations by provider type

	Doses administered	Daily increase	7 day increase
General Practice* includes other Commonwealth	24,090,548	23,961	834,066
Pharmacy	4,657,964	12,202	372,148



215,497

doses administered to persons residing in other territories or with missing residential information

*General practice includes Commonwealth Vaccination Clinics, Aboriginal Community Health Centres, Royal Flying Doctor Service and other Commonwealth vaccination facilities

Source: Australian Immunisation Register

Commonwealth aged care and disability doses administered

Data as at:
26 Jan 2022



1,210,412 (+ 1,178 last 24 hours)

Total vaccine doses administered in aged care and disability facilities as at 26 January

Number of doses administered as part of the Commonwealth aged and disability care rollout

NSW
546,185
(+153 daily increase)

VIC
227,309
(+389 daily increase)

QLD
189,907
(+185 daily increase)

WA
92,047
(+263 daily increase)

TAS
21,577
(+5 daily increase)

SA
80,544
(+87 daily increase)

ACT
15,867
(+39 daily increase)

NT
6,909
(+2 daily increase)

30,067

doses administered to persons residing in other territories or with missing residential information

*Sourced from the Australian Immunisation Register. Includes all persons vaccinated at participating residential aged care, disability and related industry settings.

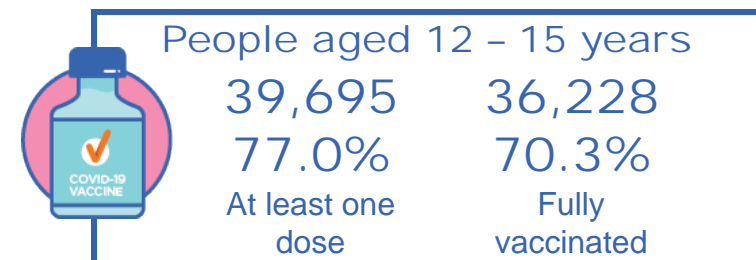
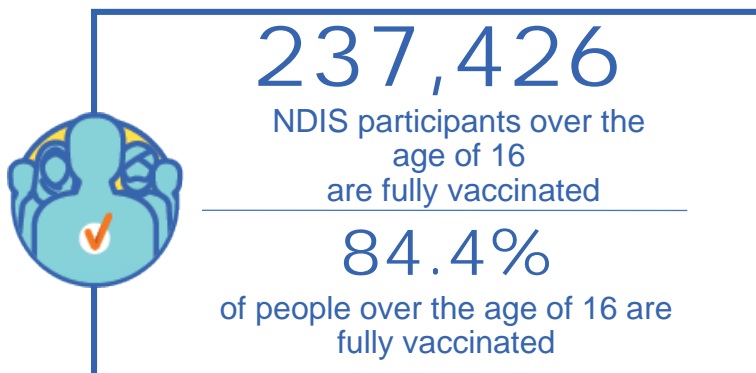
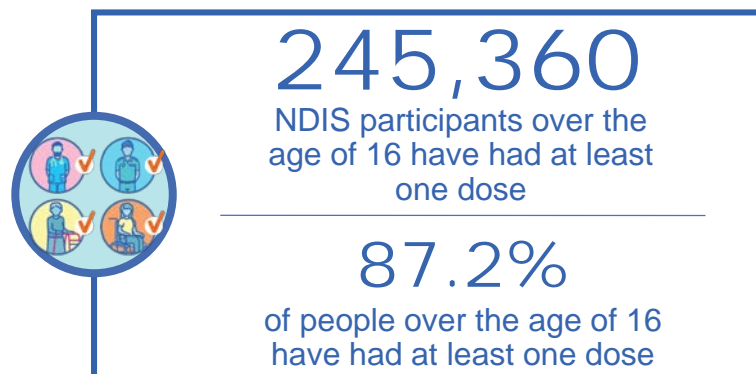
**State level breakdown indicates the residential location and may not align to the state in which the vaccination occurred.

Source: Australian Immunisation Register

National Disability Insurance Scheme (NDIS) reported vaccinations

Data as at:
19 January 2022
Updated weekly

Australia's COVID-19
Vaccine Roadmap



NDIS participant vaccinations

	People aged 16+ with at least one dose	People aged 16+ fully vaccinated	% People aged 16+ with at least one dose	% People aged 16+ fully vaccinated
ACT	4,732	4,657	90.0%	88.6%
NSW	76,734	75,345	88.4%	86.8%
NT	2,113	1,991	78.1%	73.6%
QLD	47,795	45,863	86.0%	82.5%
SA	19,860	18,907	84.7%	80.6%
TAS	6,111	5,810	86.8%	82.5%
VIC	65,972	64,584	88.9%	87.1%
WA	22,043	20,269	83.9%	77.1%
National	245,360	237,426	87.2%	84.4%

Source: Linkage between National Disability Insurance Agency data and the Australian Immunisation Register. Total NDIS participants data as at 17 January. Australian Immunisation Register data as at 17 January. Includes all participants regardless of residence type.

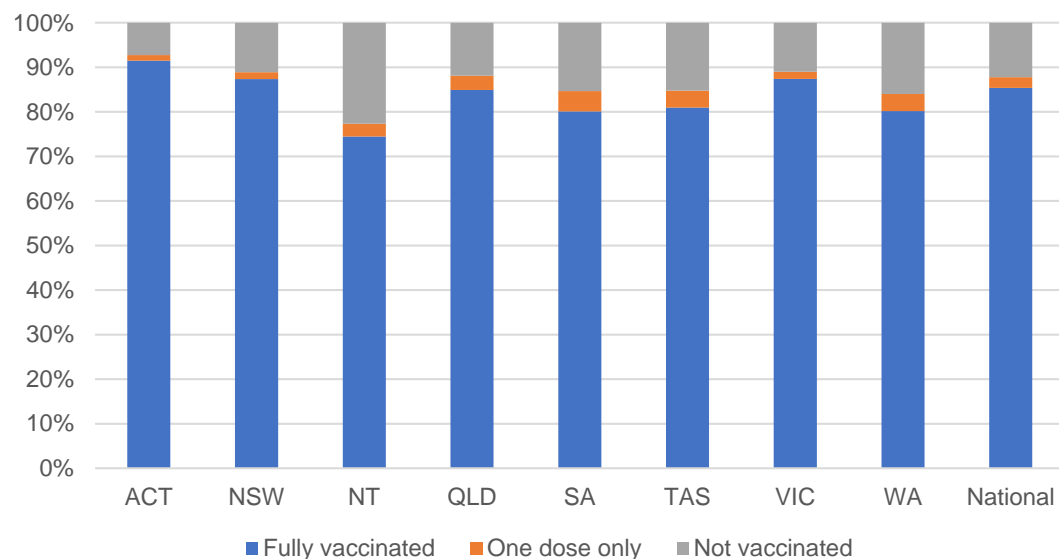
National Disability Insurance Scheme (NDIS) reported vaccinations

Data as at:
19 January 2022
Updated Weekly

Australia's COVID-19
Vaccine Roadmap

NATIONAL	Total people with at least one dose	People fully vaccinated	Total number of individuals in cohort	% People with at least one dose	% People fully vaccinated
NDIS participants living in disability accommodation	20,035	19,537	22,800	87.90%	85.70%

NDIS participants in disability and aged care accommodation



Source: Linkage between National Disability Insurance Agency data and the Australian Immunisation Register. Includes participants residing in disability accommodation only.

Source: Total NDIS participants numbers as at 17 October. Participant data as at 13 December. Australian Immunisation Register data as at 14 December. Worker data as at 12 December.

NDIS workforce vaccinations

	NDIS workers with at least one dose	NDIS workers fully vaccinated	% NDIS workers with at least one dose	% NDIS workers fully vaccinated
NSW	108,861	108,259	96.6%	96.0%
VIC	110,085	109,529	97.5%	97.0%
QLD	64,162	63,086	96.0%	94.4%
WA	30,982	30,035	97.5%	94.6%
SA	33,848	32,635	98.1%	94.6%
TAS	10,022	9,804	98.5%	96.4%
ACT	3,382	3,371	99.3%	99.0%
NT	3,052	3,006	99.3%	97.9%
TOTAL	364,394	359,725	97.1%	95.8%

Source: the NDIS Commission has established a requirement for registered NDIS providers who provide intensive disability support services to report on the vaccination status of workers they employ, or otherwise engage, to deliver NDIS-funded supports and services, and who are required to be vaccinated in accordance with in-force state and territory public health orders. The statistics reflect data reported to the NDIS Commission by registered NDIS providers and should be considered indicative and subject to change

Note: Some registered NDIS providers are yet to report on the vaccination status of their workforce. The NDIS Commission is working with those providers around reporting requirements.

Remaining workers not included include those exempt from vaccination requirements, workers whose vaccination status is not yet verified by the provider (such as workers on leave) and provider reporting anomalies.

Residential aged care vaccination rollout

Data as at: 26 Jan 2022

Residential aged care facilities status

100%

Commonwealth facilities visited (2,590 planned sites)

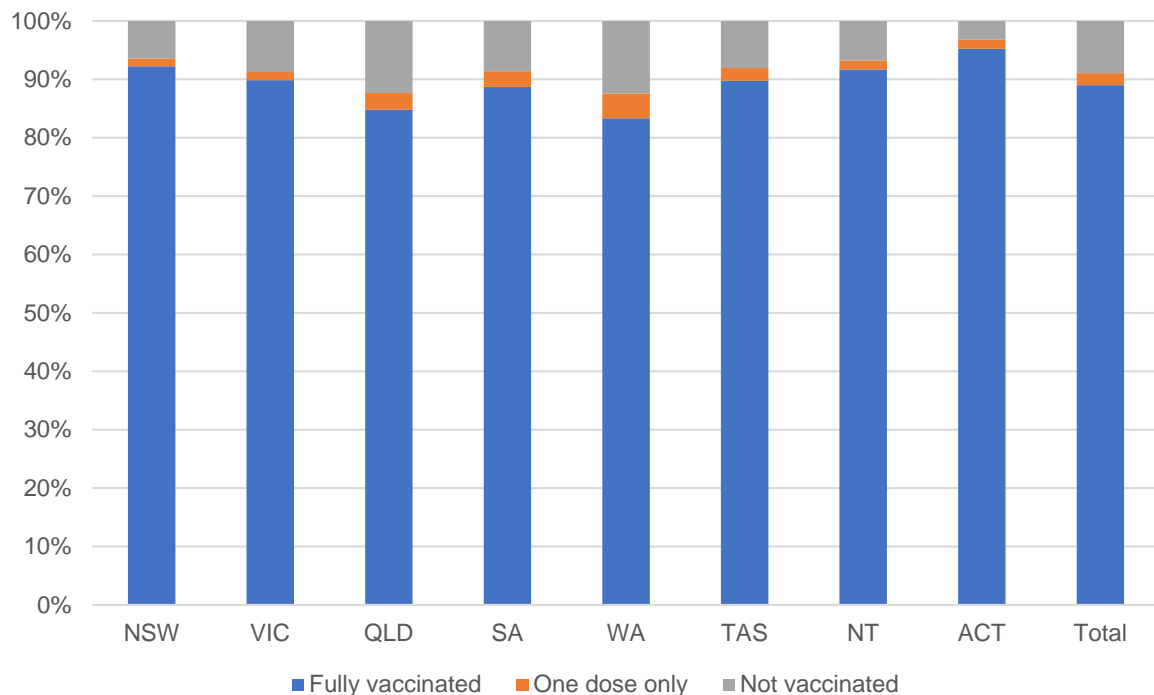
169,881

People fully vaccinated

173,815

People with at least one dose

Aged care resident vaccinations



Aged care worker vaccinations

Jurisdictions	Total workers with at least one dose	Workers fully vaccinated	% Workers with at least one dose	% Workers fully vaccinated
NSW	78,722	78,689	99.0%	99.0%
VIC	70,452	70,452	99.0%	99.0%
QLD	48,734	48,720	99.4%	99.3%
SA	27,367	27,321	99.5%	99.3%
WA	23,834	23,757	99.9%	99.6%
TAS	7,605	7,592	99.4%	99.3%
NT	858	858	99.9%	99.9%
ACT	3,061	3,061	100.0%	100.0%
Total	260,633	260,450	99.2%	99.2%

Source: My Aged Care Portal vaccination progress

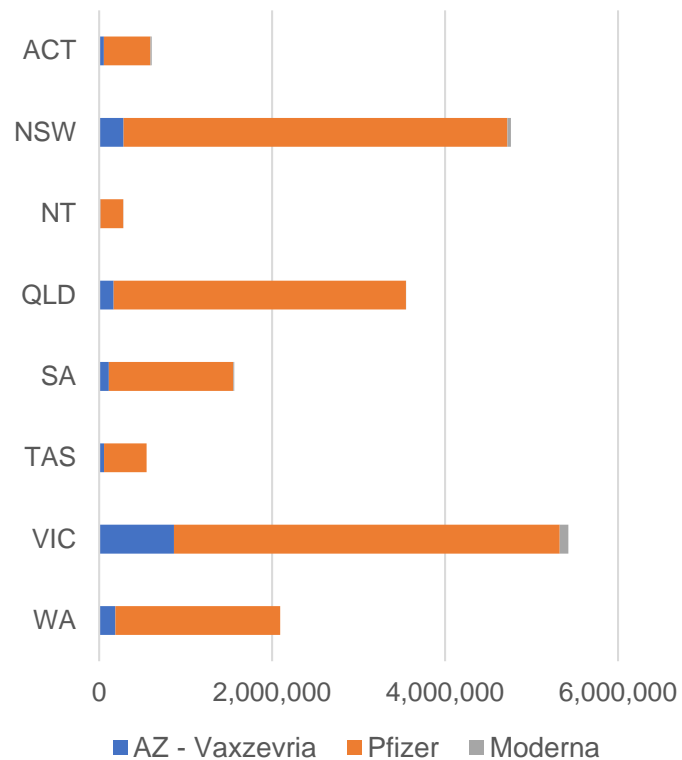
*Status updates are provided by facilities at least once per week. Reporting is updated Monday to Friday to encompass different facility updates being made on different days.

Data is sourced directly from Aged Care Service Providers and is not drawn or closely aligned with data from AIR due to inconsistencies and potential lags in uploading of records.

Data as at:
26 Jan 2022

Jurisdiction administered

Total vaccine doses administered in State and Territory clinics as at 26 January



18,825,391 total vaccine doses administered in State and Territory clinics as at 26 January
 + 45,368 recorded in the last 24 hours
 + 509,554 recorded in the last 7 days

NSW
4,761,923
 (+411 daily increase)

VIC
5,426,122
 (+16,342 daily increase)

QLD
3,547,852
 (+9,370 daily increase)

WA
2,092,895
 (+7,450 daily increase)

TAS
548,048
 (+1,926 daily increase)

SA
1,562,119
 (+6,061 daily increase)

ACT
608,027
 (+3,645 daily increase)

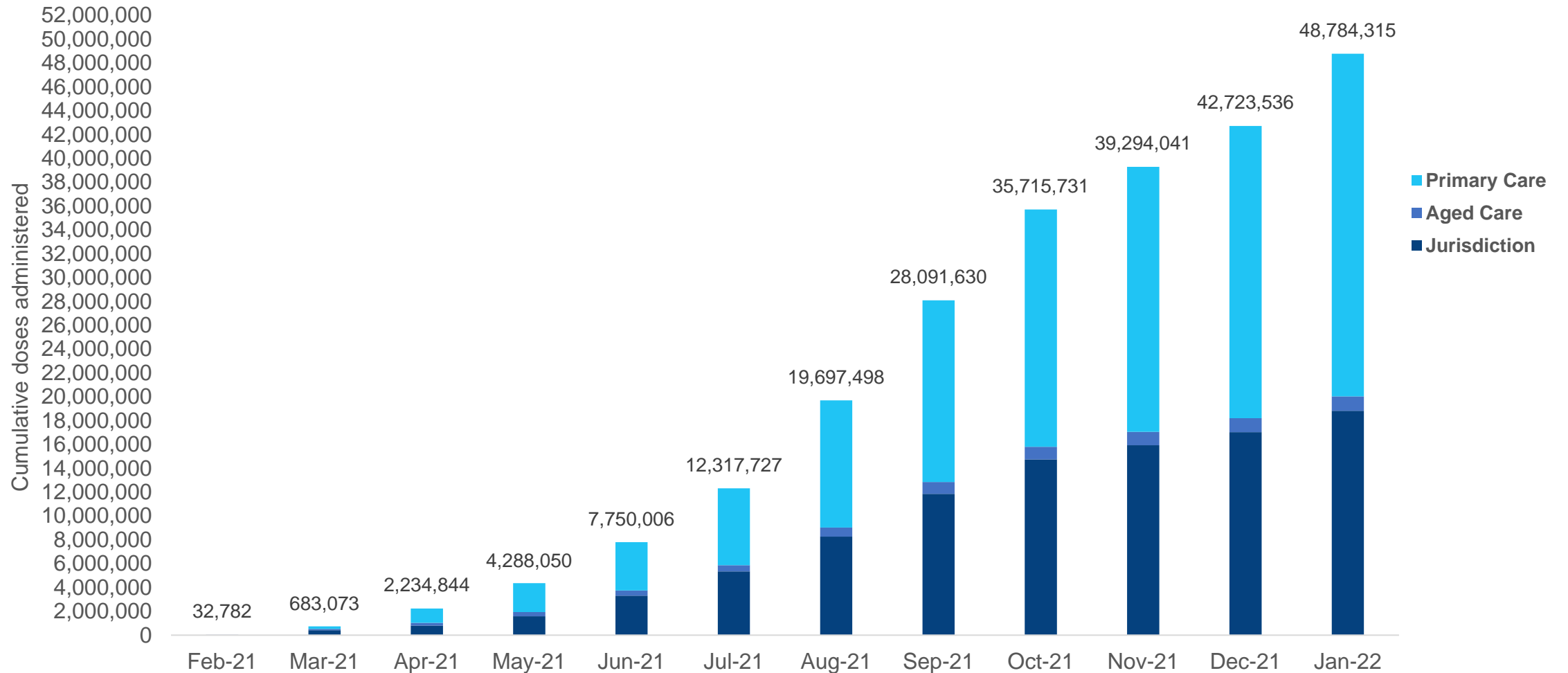
NT
278,405
 (+163 daily increase)

*Sourced from the Australian Immunisation Register. Numbers are calculated as difference in daily cumulative reported numbers to allow for historical corrections.

Source: Australian Immunisation Register

Cumulative doses administered by channel

Data as at:
26 Jan 2022



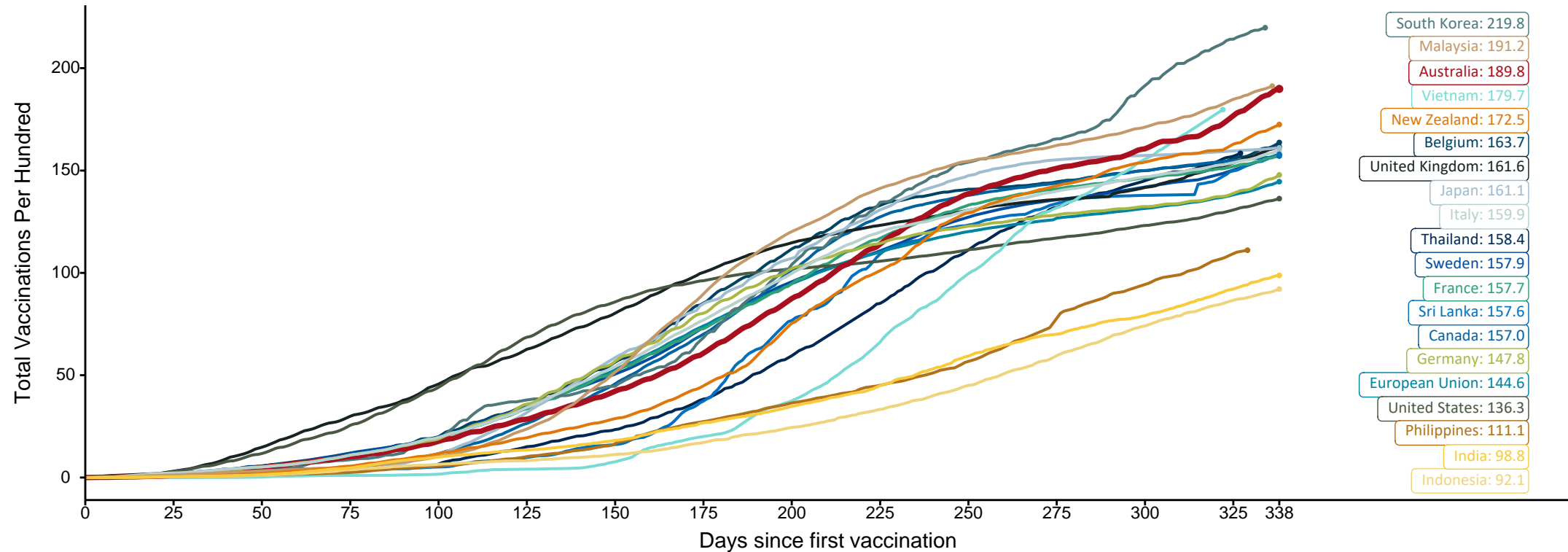
Source: Australian Immunisation Register

Doses at equivalent stages of rollout (Day 338)

Data as at:
26 Jan 2022

The x-axis is truncated at the length of Australia's vaccination program. Countries with intermittent reporting have had their doses per 100 imputed to Australia's current stage of rollout. Israel excluded as it is beyond scale of the graph

Cumulative doses administered (26 Jan): **48,784,315**

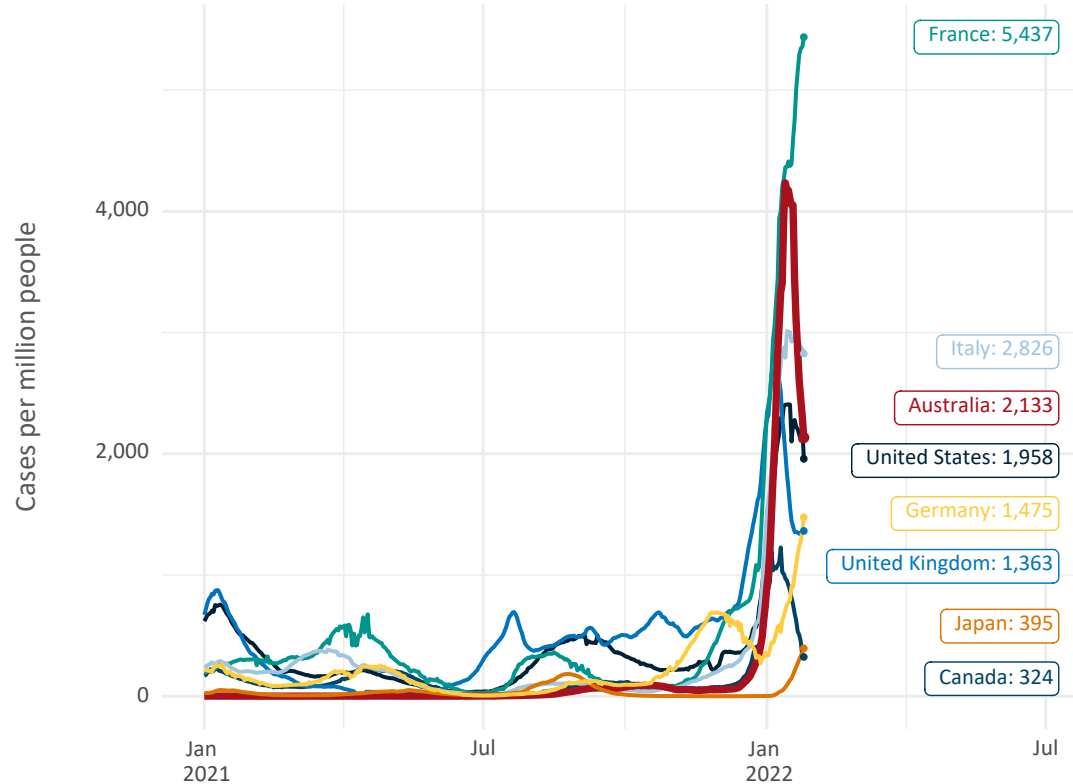


Note: From 15 September 2021, data for Australia includes all doses administered to people 12 and over. Prior to 15 September, data was for 16 and over
 Due to data revisions, Singapore has been removed from the chart
 Source: Department of Health (Australia), Our World in Data (international)
 Latest data: 26 January

Data as at:
26 Jan 2022

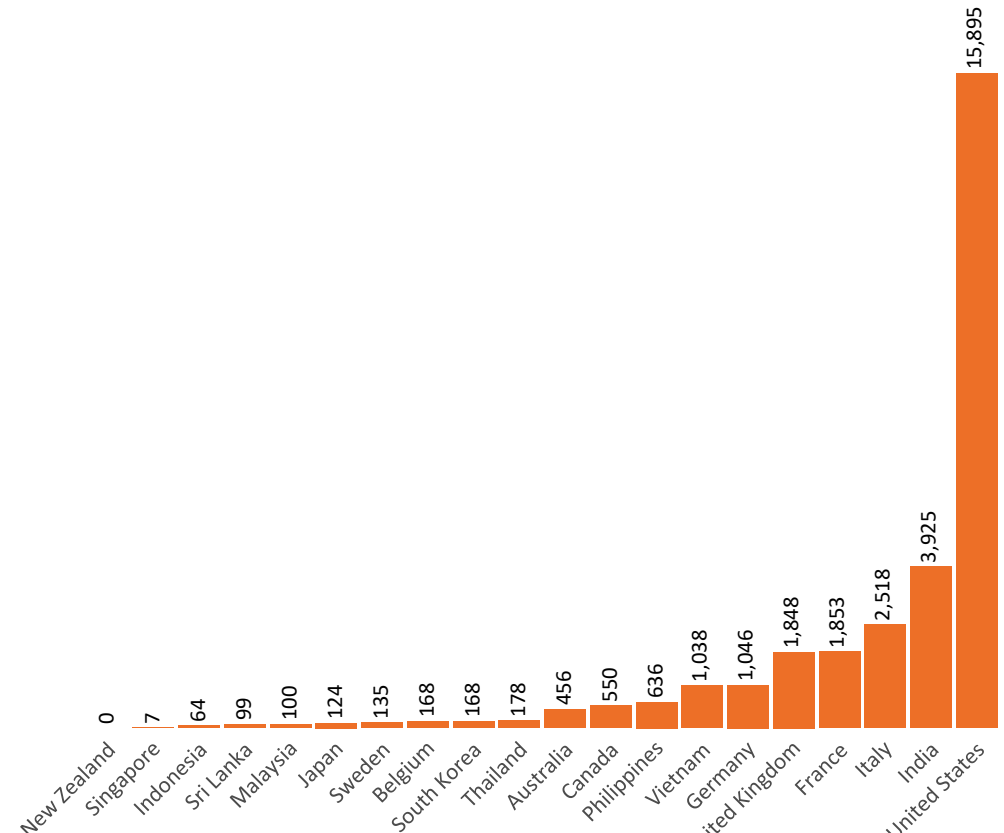
International data – COVID-19

New daily cases per million in 2021, Australia and G7 countries
Smoothed - 7 day average



Source: OWID
Data downloaded: 27 Jan 2022 08:03
Latest data: 25 Jan 2022


COVID-19 deaths in past 7 days - Australia and select countries



Source: OWID
Data downloaded: 27 Jan 2022 08:03
Latest data: 25 Jan 2022

**Data as at midnight:
23 Jan 2022
Updated weekly**

Pandemic Response Payments



2.38 million
People have received at least one COVID Disaster Payment (including ISP200)

\$13.31 billion
Paid Out as at 23 Jan 2022


6.43 million
Claims granted across three different payments



96%
of Claims Received Digitally



COVID Disaster Payment:	5.89 million claims received - 2.19 million individuals paid a total of \$12.59 billion.
\$200 Income Support Payment:	353,000 claims received - 183,000 individuals paid a total of \$268.91 million.
Pandemic Leave Disaster Payment:	600,000 claims received - 403,000 individuals paid a total of \$451.9 million.



THREE PAYMENTS AVAILABLE

[COVID Disaster Payment](#)
assisting during a lockdown event in a Commonwealth hotspot.

[Income Support Payment \\$200](#)
for income support recipients who lost at least 8 hours of work.

[Pandemic Leave Disaster Payment](#)
for those who have to self-isolate, quarantine or care.

For more information visit:
servicesaustralia.gov.au

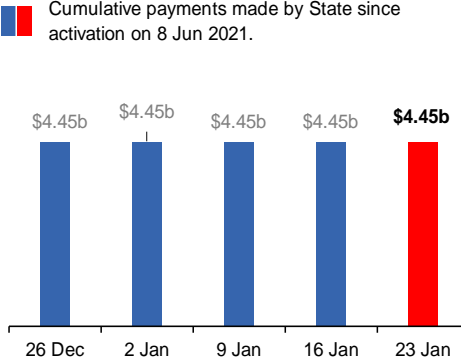
COVID-19 DISASTER PAYMENTS

Victoria
Lockdown (#6) from 6 Aug to 28 Oct
Claiming period ended 9 Dec

745,000 people have received at least one COVID Disaster Payment.

\$4.45b paid out as at 23 Jan 2022.

\$9,000 paid in initial and reoccurring payments in the week ending 23 Jan 2022.

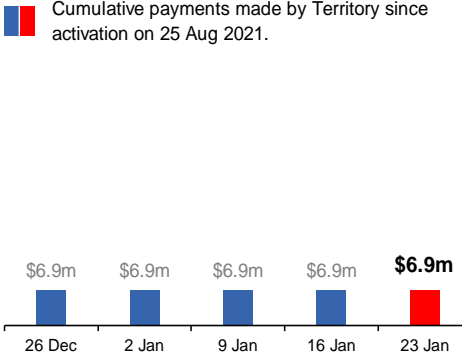


Northern Territory
Lockdown (#3) from 16 Nov to 22 Nov
Claiming period ends 27 Dec

7,500 people have received at least one COVID Disaster Payment.

\$6.9m paid out as at 23 Jan 2022.

\$0 paid in initial payments in the week ending 23 Jan 2022.

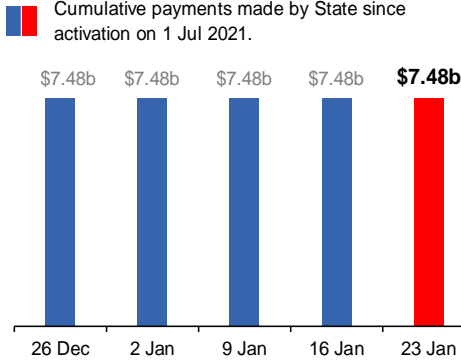


New South Wales
Lockdown from 24 Jun to 10 Oct
Claiming period ended 27 Nov

1.08m people have received at least one COVID Disaster Payment.

\$7.48b paid out as at 23 Jan 2022.

\$11,000 paid in initial and reoccurring payments in the week ending 23 Jan 2022.

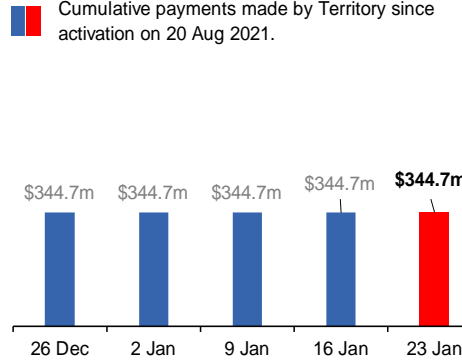


Australian Capital Territory
Lockdown from 12 Aug to 14 Oct
Claiming period ended 25 Nov

65,000 people have received at least one COVID Disaster Payment.

\$344.7m paid out as at 23 Jan 2022.

\$1,000 paid in initial and reoccurring payments in the week ending 23 Jan 2022.



Data as at midnight:
23 Jan 2022
Updated weekly

Pandemic Response Payments (continued)

COVID-19 DISASTER PAYMENTS

Tasmania

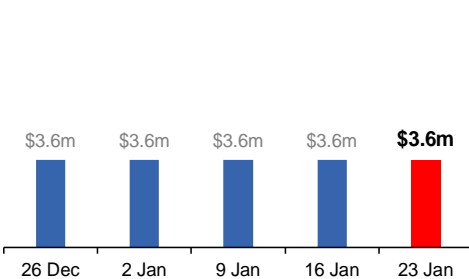
Lockdown from 15 Oct to 18 Oct
Claiming period ended 12 Nov

6,900 people have received at least one COVID Disaster Payment.

\$3.6m paid out as at 23 Jan 2022.

\$0 paid in initial and reoccurring payments in the week ending 23 Jan 2022.

Cumulative payments made by State since activation on 22 Oct 2021.



Queensland

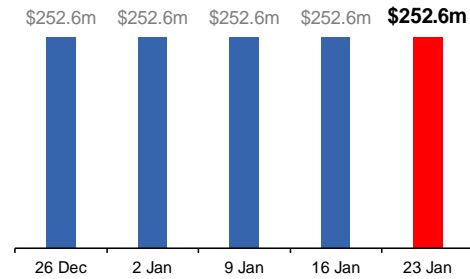
Lockdown from 31 Jul to 11 Aug
Claiming period ended 28 Aug

196,000 people have received at least one COVID Disaster Payment.

\$252.6m paid out as at 23 Jan 2022.

\$0 paid in initial and reoccurring payments in the week ending 23 Jan 2022.

Cumulative payments made by State since activation on 7 Aug 2021.



South Australia

Lockdown from 21 to 27 Jul
Claiming period ended 17 Aug

86,000 people have received at least one COVID Disaster Payment.

\$48.2m paid out as at 23 Jan 2022.

\$0 paid in initial and reoccurring payments in the week ending 23 Jan 2022.

Cumulative payments made by State since activation on 28 Jul 2021.

