



**Australian Government**  
**Operation COVID Shield**

# COVID-19 Vaccine Roll-out

26 January 2022

Data as at:  
25 Jan 2022

# Total vaccine doses



**48,701,606** total vaccine doses administered nationally as at 25 January  
**+323,879** recorded in the last 24 hours



**19,678,428**

people have had at least one dose

**>95%**

of people over the age of 16 have had at least one dose



**19,193,031**

people are fully vaccinated

**93.1%**

of people over the age of 16 are fully vaccinated



**7,041,225**

people over the age of 18 who have received more than two doses

**NSW**  
**15,484,313**  
(+91,663 daily increase)

**VIC**  
**12,832,241**  
(+89,873 daily increase)

**QLD**  
**9,402,447**  
(+56,550 daily increase)

**WA**  
**4,897,583**  
(+42,266 daily increase)

**TAS**  
**1,077,397**  
(+6,534 daily increase)

**SA**  
**3,338,889**  
(+24,555 daily increase)

**ACT**  
**1,193,635**  
(+9,689 daily increase)

**NT**  
**475,101**  
(+2,749 daily increase)

\*Administration state breakdown indicates state in which a vaccine was administered

\*\*Overall dose count includes instances of more than two doses per person in a small number of cases.

Source: Australian Immunisation Register

# Booster Vaccinations

Data as at:  
25 Jan 2022



**7,041,225** total people over the age of 18 years old  
who have received more than two doses nationally

**+247,988** people who have received more than two doses  
nationally in the last 24 hours

**NSW**  
**2,312,892**  
(74,244 daily  
increase)

**VIC**  
**1,851,392**  
(70,933 daily  
increase)

**QLD**  
**1,293,877**  
(43,516 daily  
increase)

**WA**  
**672,040**  
(26,264 daily  
increase)

**TAS**  
**154,032**  
(5,559 daily  
increase)

**SA**  
**511,780**  
(18,640 daily  
increase)

**ACT**  
**146,734**  
(5,491 daily  
increase)

**NT**  
**57,101**  
(1,640 daily  
increase)

**41,377**

doses administered to persons  
residing in other territories or with  
missing residential information

Source: Australian Immunisation Register

Data as at: 25 Jan 2022

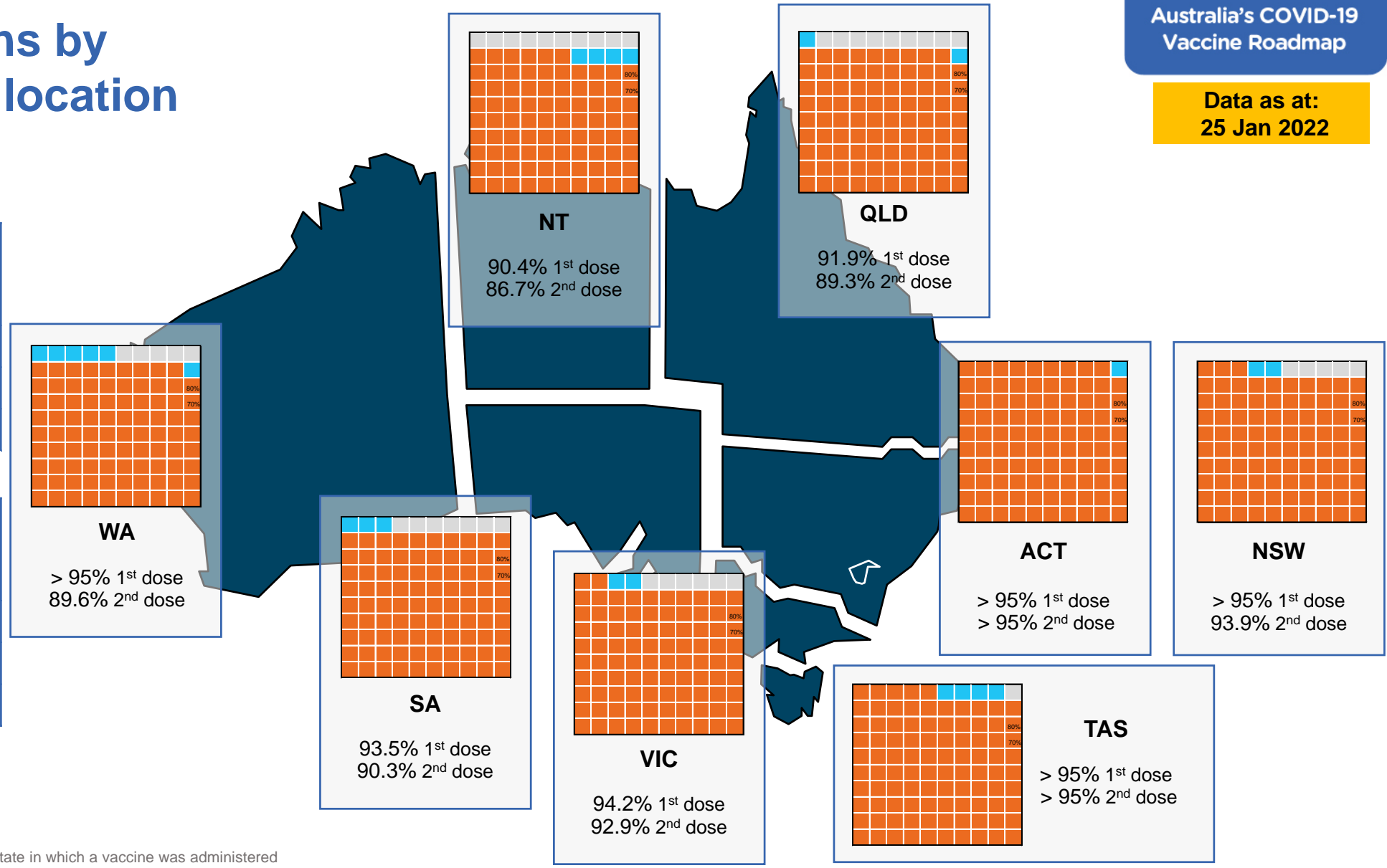
# Vaccinations by residential location

## First doses

Age	Today	4 weeks ago	8 weeks ago
16+	>95%	94.4%	92.9%
50+	>95%	>95%	>95%
70+	>95%	>95%	>95%

## Fully vaccinated

Age	Today	4 weeks ago	8 weeks ago
16+	93.1%	91.4%	87.8%
50+	>95%	>95%	94.8%
70+	>95%	>95%	>95%



\*Residential state may differ from the state in which a vaccine was administered

# Commonwealth and Jurisdiction vaccine doses administered

Data as at:  
25 Jan 2022



**48,701,606** total vaccine doses administered nationally as at 25 January  
+ **323,879** recorded in the last 24 hours



**18,780,023** doses administered by state and territory facilities  
+ **68,196** recorded in the last 24 hours



**29,921,583** doses administered by commonwealth facilities  
+ **255,683** recorded in the last 24 hours

**28,712,349** total vaccine doses administered in primary care settings  
**1,209,234** total vaccine doses administered in aged care and disability settings

NSW	Jurisdictions	Commonwealth
Cumulative	4,761,512	10,722,801
Daily increase	4,129	87,534

VIC	Jurisdictions	Commonwealth
Cumulative	5,409,780	7,422,461
Daily increase	25,755	64,118

QLD	Jurisdictions	Commonwealth
Cumulative	3,538,482	5,863,965
Daily increase	9,232	47,318

WA	Jurisdictions	Commonwealth
Cumulative	2,085,445	2,812,138
Daily increase	11,441	30,825

TAS	Jurisdictions	Commonwealth
Cumulative	546,122	531,275
Daily increase	1,775	4,759

SA	Jurisdictions	Commonwealth
Cumulative	1,556,058	1,782,831
Daily increase	9,485	15,070

ACT	Jurisdictions	Commonwealth
Cumulative	604,382	589,253
Daily increase	4,915	4,774

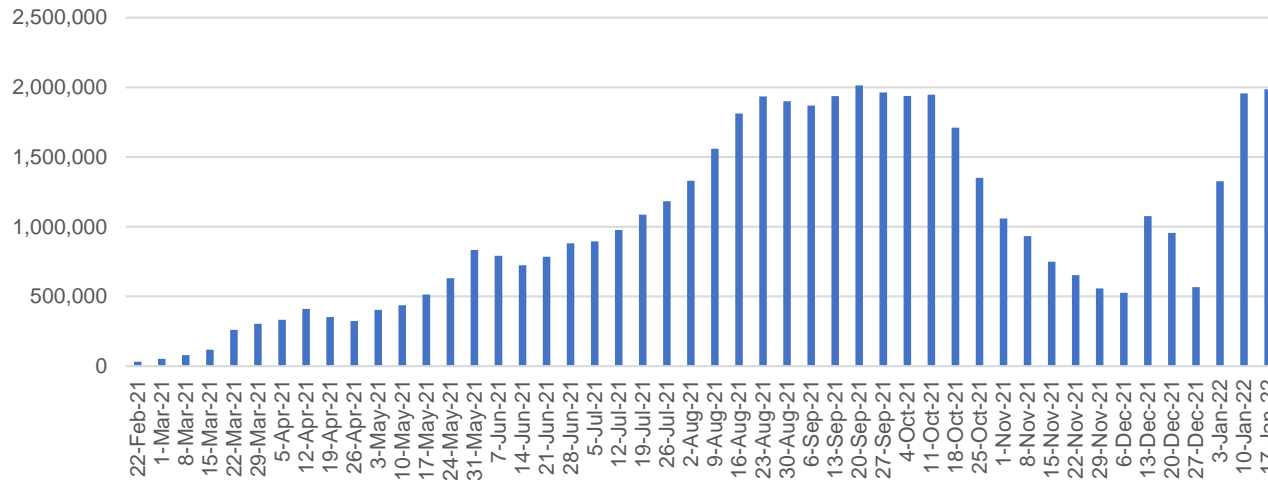
NT	Jurisdictions	Commonwealth
Cumulative	278,242	196,859
Daily increase	1,464	1,285

# Vaccine milestone charts

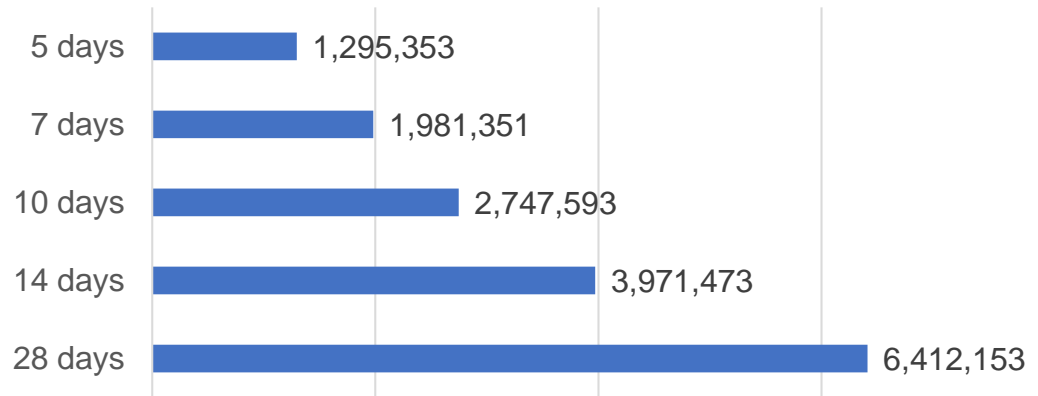
Data as at:  
25 Jan 2022

Australia's COVID-19  
Vaccine Roadmap

Doses Administered by Week

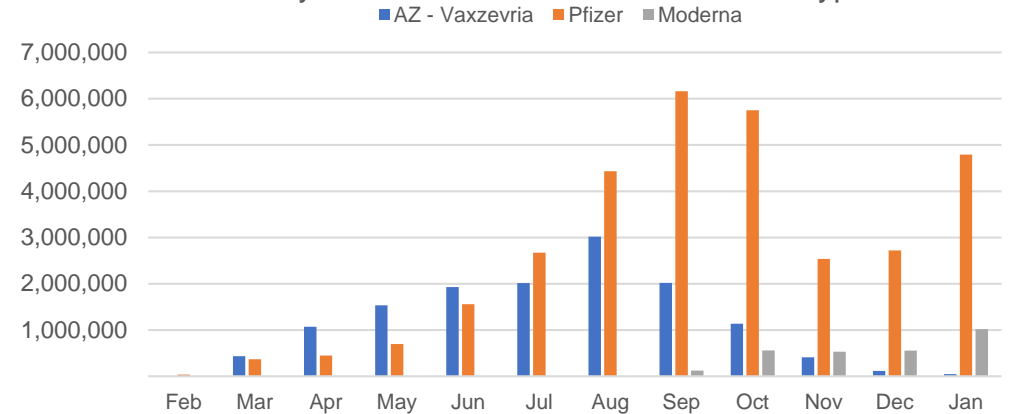


Doses Reported

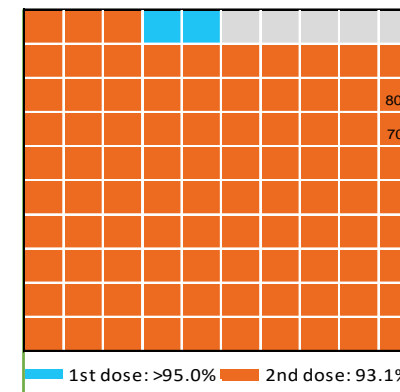


\*Sourced from the Australian Immunisation Register.

Doses by administration month and vaccine type



Eligible population percentage coverage



\*Each square represents 1% of the national population. Squares are filled as milestones are achieved.

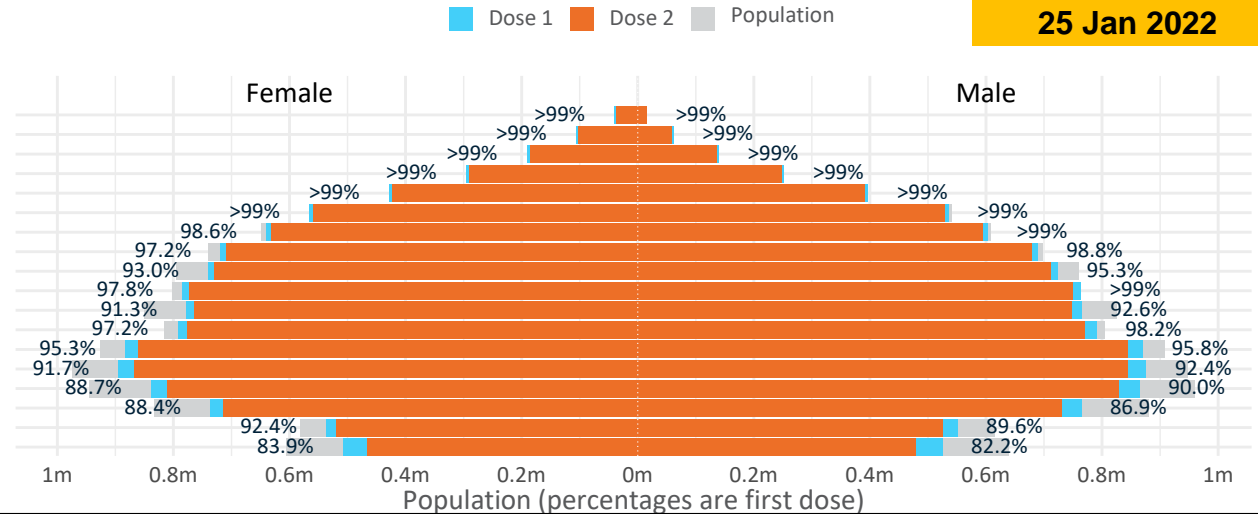
Data as at: 25 Jan 2022

# Doses by age and sex

First and second doses by age and sex

	16+	50+	12-15	5-11
Dose 1	95.43% (19,678,428 doses / 20,619,959 people)	>99% (8,703,674 doses / 8,749,703 people)	83.04% (1,033,052 doses / 1,243,990 people)	33.44% (761,340 doses / 2,276,638 people)
Dose 2	93.08% (19,193,031 doses / 20,619,959 people)	97.82% (8,558,606 doses / 8,749,703 people)	75.95% (944,860 doses / 1,243,990 people)	

Age	Dose 1	Dose 2
95+	56,370 (>99%)	52,641 (>99%)
90-94	168,415 (>99%)	161,453 (>99%)
85-89	331,630 (>99%)	322,250 (>99%)
80-84	548,450 (>99%)	538,241 (>99%)
75-79	826,549 (>99%)	814,899 (>99%)
70-74	1,102,783 (>99%)	1,088,075 (98.5%)
65-69	1,245,156 (99.0%)	1,227,148 (97.5%)
60-64	1,409,367 (98.1%)	1,387,967 (96.6%)
55-59	1,465,389 (94.2%)	1,442,637 (92.7%)
50-54	1,549,565 (>99%)	1,523,295 (97.4%)
45-49	1,543,811 (92.1%)	1,513,960 (90.3%)
40-44	1,585,499 (97.9%)	1,548,656 (95.6%)
35-39	1,758,012 (95.8%)	1,709,423 (93.2%)
30-34	1,778,644 (92.5%)	1,717,985 (89.3%)
25-29	1,713,820 (89.9%)	1,648,135 (86.4%)
20-24	1,506,632 (88.0%)	1,450,274 (84.7%)
16-19	1,088,336 (91.0%)	1,045,992 (87.5%)
12-15	1,033,052 (83.0%)	944,860 (76.0%)

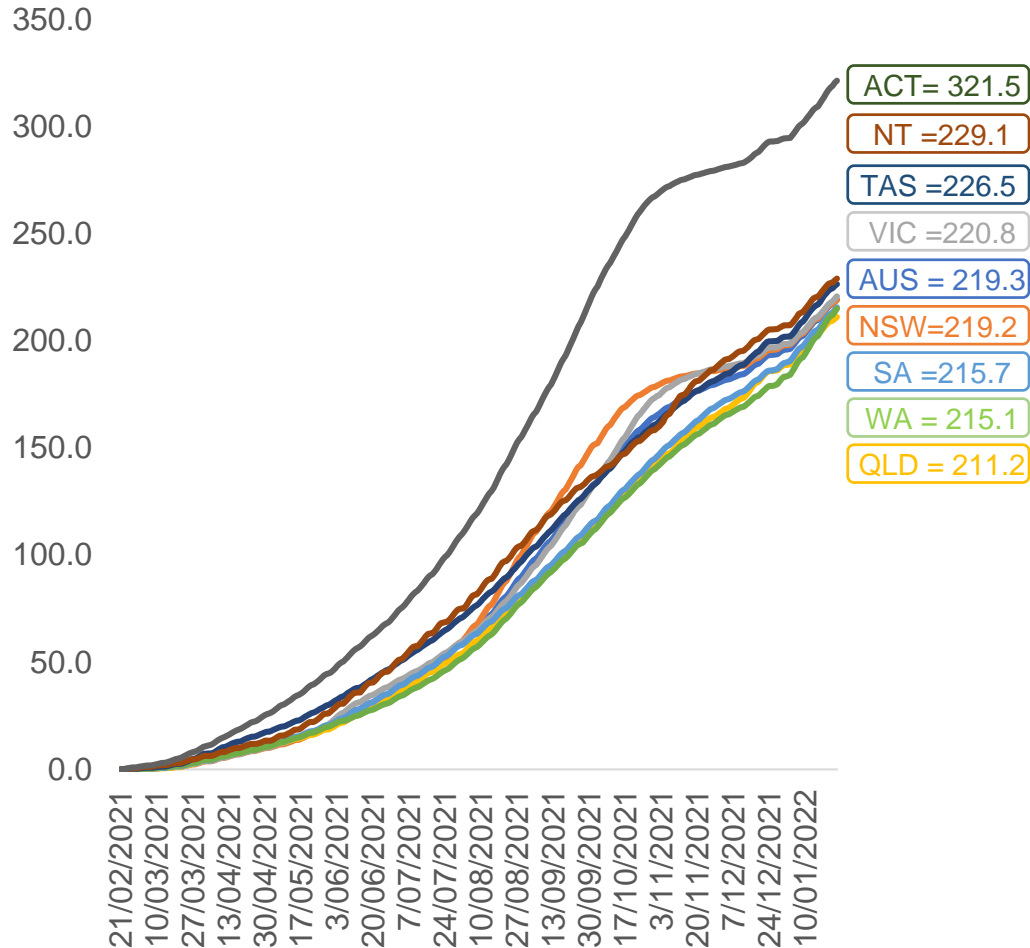


	AUS	ACT	NSW	NT	QLD	SA	TAS	VIC	WA
16 and over - dose 1	19,678,428	348,491	6,261,331	172,332	3,779,564	1,347,088	436,644	5,092,953	2,017,717
16 and over - dose 2	19,193,031	343,695	6,167,694	165,311	3,673,207	1,301,389	422,278	5,021,148	1,895,924
16 and over - population	20,619,959*	344,037	6,565,651	190,571	4,112,707	1,440,400	440,172	5,407,574	2,114,978
16 and over % with dose 1	95.43%	>99%	95.36%	90.43%	91.90%	93.52%	>99%	94.18%	95.40%
16 and over % with dose 2	93.08%	>99%	93.94%	86.75%	89.31%	90.35%	95.93%	92.85%	89.64%
5 to 11 - dose 1	761,340	23,032	237,317	8,124	141,684	53,641	19,931	210,471	63,245
5 to 11 - population	2,276,638	39,789	716,460	24,750	478,731	148,816	45,033	578,499	244,154
5 to 11 % with dose 1	33.44%	57.89%	33.12%	32.82%	29.60%	36.05%	44.26%	36.38%	25.90%
12 to 15 - dose 1	1,033,052	19,912	323,791	10,624	202,912	66,644	22,123	274,039	104,213
12 to 15 - dose 2	944,860	19,137	305,926	9,159	180,428	59,356	19,824	260,487	83,228
12 to 15 - population	1,243,990	19,693	390,330	13,060	270,146	82,747	26,308	308,611	132,869
12 to 15 % with dose 1	83.04%	>99%	82.95%	81.35%	75.11%	80.54%	84.09%	88.80%	78.43%
12 to 15 % with dose 2	75.95%	97.18%	78.38%	70.13%	66.79%	71.73%	75.35%	84.41%	62.64%

\*National population will not equal sum of listed jurisdictions due to a small number of people counted in national population residing in some 'other' territories. Sum of state doses will not add to national total as some records are unable to be geocoded to a State or Territory. Doses sourced from Australian Immunisation Register, population from ABS ERP June 2020

# Vaccinations by location

Cumulative total doses administered vs eligible state populations\*

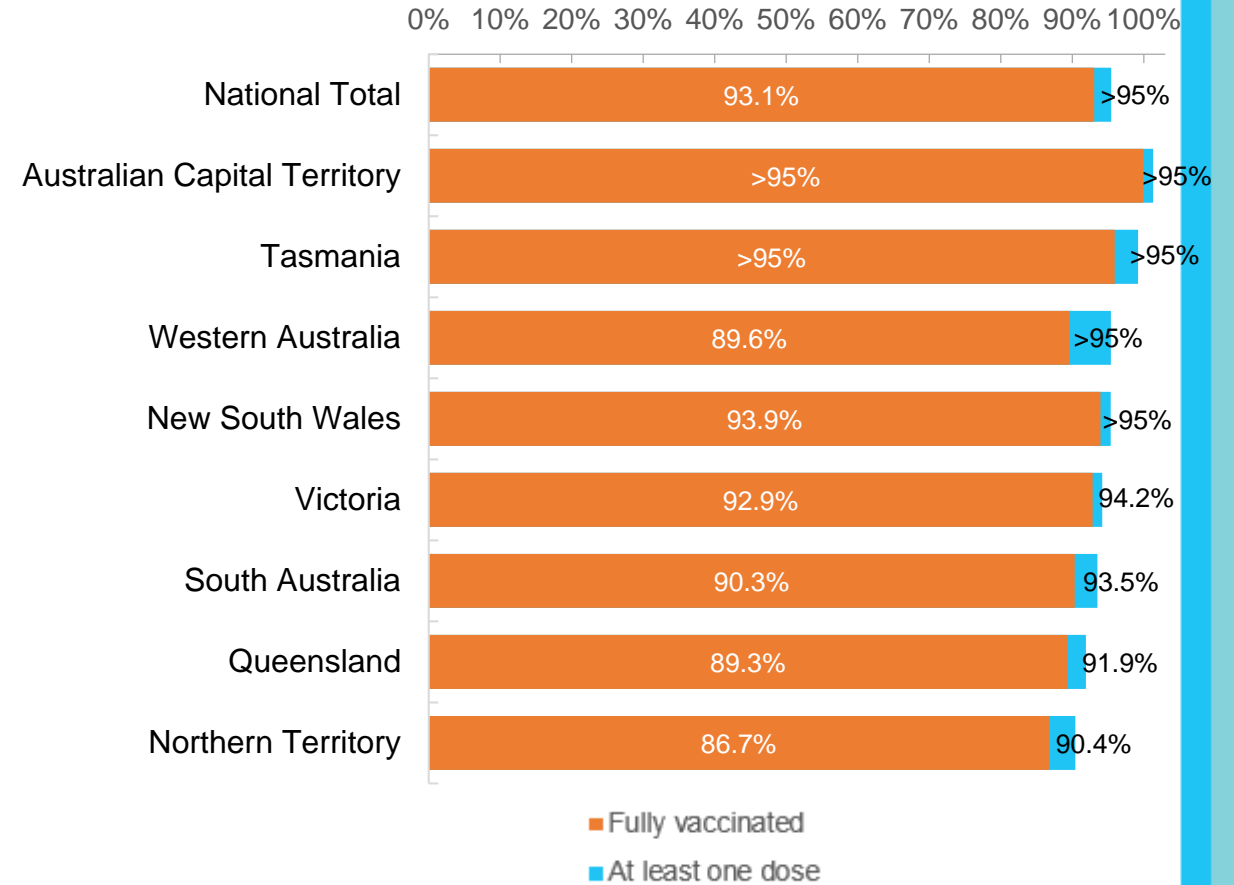


\*Not an indication of percentage vaccinated, numbers will exceed 100 due to multiple doses required per person of the population. All doses are included for those aged 12 and above, and are based on vaccination provider location.

Data as at:  
25 Jan 2022

Australia's COVID-19  
Vaccine Roadmap

First and Second Doses by residential location





# Aboriginal and Torres Strait Islander peoples

## Number of people vaccinated

Data as at:  
25 Jan 2022  
Updated weekly

Australia's COVID-19  
Vaccine Roadmap



425,024

people over the age of 16  
have had at least one dose

81.4%

of people over the age of 16  
have had at least one dose



392,161

people over the age of 16  
are fully vaccinated

75.1%

of people over the age of 16 are  
fully vaccinated



45,600  
(64.1%)

people aged 12-15 years  
have had at least one dose

173 Aboriginal community controlled health services (ACCHS)###

0#	50	27	41	12	3	21	19
ACT	NSW	NT	QLD	SA	TAS	VIC	WA

Medicare Address State##	Individuals Dose 1	Individuals Dose 1 %	Individuals Dose 2	Individuals Dose 2 %
Australian Capital Territory	4,890	91.0%	4,745	88.3%
New South Wales	135,911	86.4%	132,177	84.0%
Northern Territory	41,106	87.1%	37,208	78.8%
Queensland	112,091	78.7%	102,361	71.9%
South Australia	19,274	76.8%	17,114	68.2%
Tasmania	14,399	87.0%	13,626	82.3%
Victoria	35,277	88.9%	34,261	86.3%
Western Australia	46,602	73.8%	37,869	60.0%
Unknown/Other Territories	15,474	60.4%	12,800	50.0%
<b>Totals</b>	<b>425,024</b>	<b>81.4%</b>	<b>392,161</b>	<b>75.1%</b>

Source: Australian Immunisation Register

\*Identifying as Aboriginal and Torres Strait Islander is optional and the estimated population may be under reported.

\*\*Includes all Aboriginal and Torres Strait Islander peoples who have received a vaccination, not limited to those administered in an ACCHS setting

#ACCHS in the ACT are currently operating as a Commonwealth Vaccine Clinics so not included to avoid double counting

##The above table includes all identified Aboriginal and Torres Strait Islander people who are aged 16 and above by their state of residence.

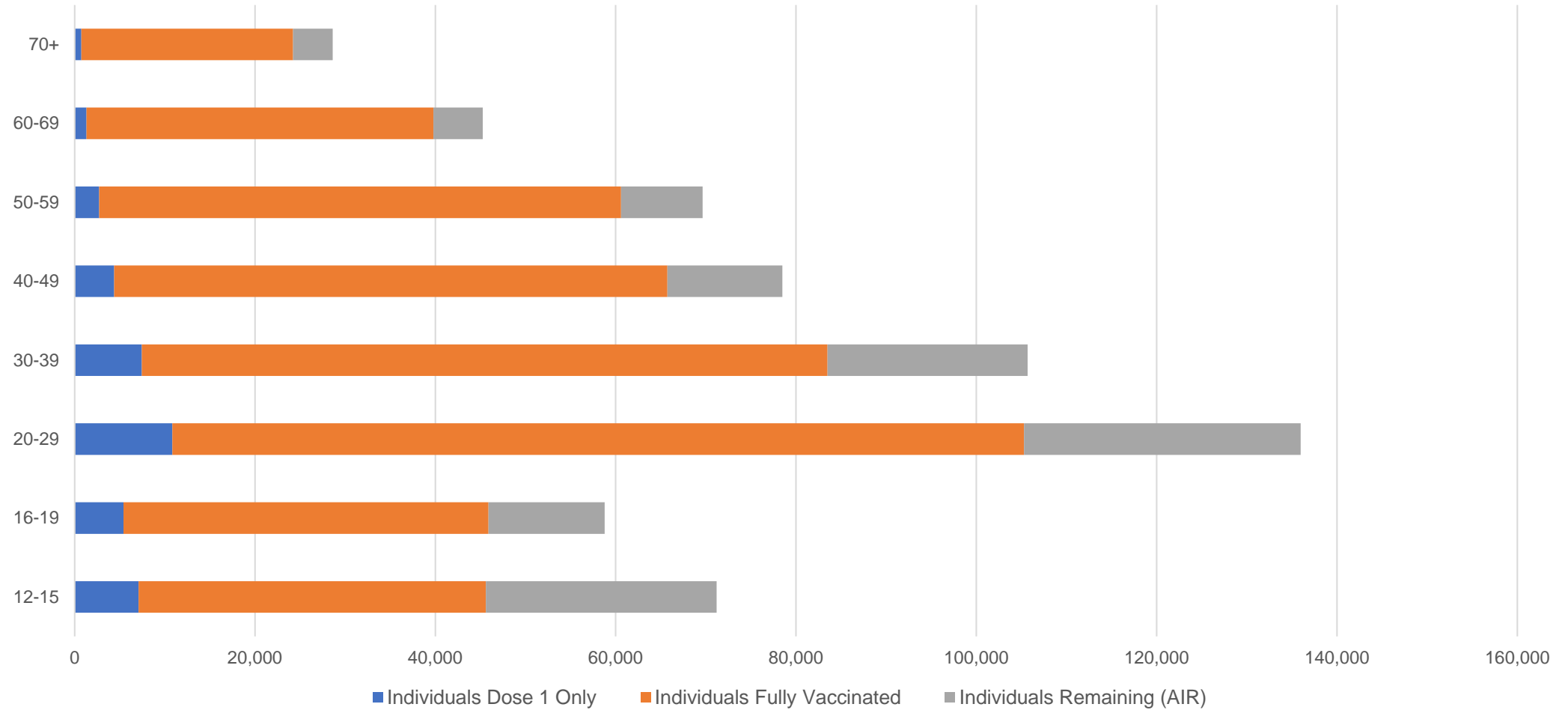
### Site numbers current as at 18 January 2022.

# Aboriginal and Torres Strait Islander peoples

## Number of people vaccinated by age

Data as at:  
25 Jan 2022  
Updated weekly

Australia's COVID-19  
Vaccine Roadmap



Source: Australian Immunisation Register

# Commonwealth primary care

Data as at:  
25 Jan 2022

Australia's COVID-19  
Vaccine Roadmap



Primary care vaccine administration sites

5,714	128	174	3,494
GPs	CVCs	ACCHS	Pharmacies



**28,712,349** total vaccine doses administered  
primary care settings as at 25 January

**+ 252,746** recorded in the last 24 hours

## Primary care vaccinations by provider type

	Doses administered	Daily increase	7 day increase
<b>General Practice*</b> includes other Commonwealth	24,066,587	172,439	983,331
<b>Pharmacy</b>	4,645,762	80,307	439,797



**214,010**

doses administered to persons residing in other territories or with missing residential information

\*General practice includes Commonwealth Vaccination Clinics, Aboriginal Community Health Centres, Royal Flying Doctor Service and other Commonwealth vaccination facilities

Source: Australian Immunisation Register

Data as at:  
25 Jan 2022

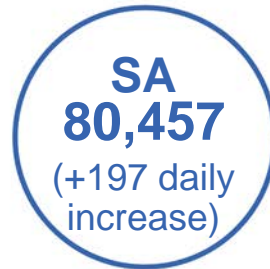
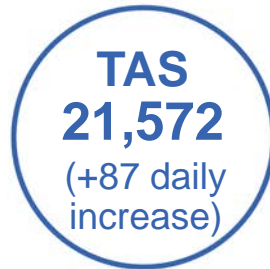
# Commonwealth aged care and disability doses administered



1,209,234 (+ 2,937 last 24 hours)

Total vaccine doses administered in aged care and disability facilities as at 25 January

Number of doses administered as part of the Commonwealth aged and disability care rollout



**30,012**

doses administered to persons residing in other territories or with missing residential information

\*Sourced from the Australian Immunisation Register. Includes all persons vaccinated at participating residential aged care, disability and related industry settings.

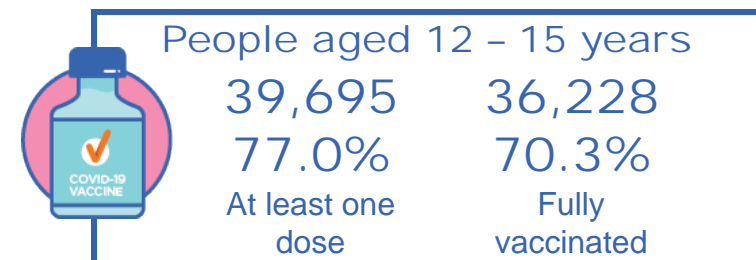
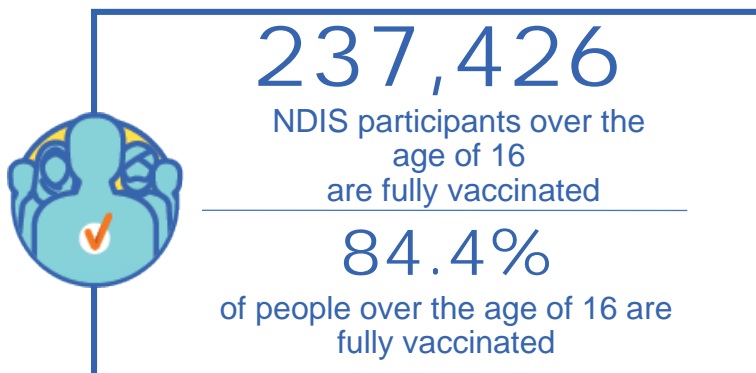
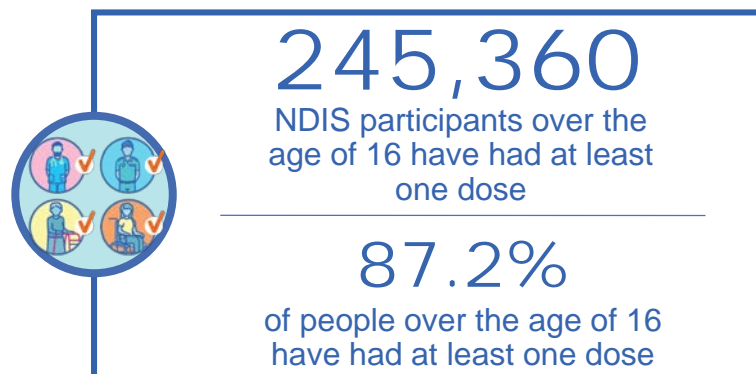
\*\*State level breakdown indicates the residential location and may not align to the state in which the vaccination occurred.

Source: Australian Immunisation Register

# National Disability Insurance Scheme (NDIS) reported vaccinations

Data as at:  
19 January 2022  
Updated weekly

Australia's COVID-19  
Vaccine Roadmap



## NDIS participant vaccinations

	People aged 16+ with at least one dose	People aged 16+ fully vaccinated	% People aged 16+ with at least one dose	% People aged 16+ fully vaccinated
ACT	4,732	4,657	<b>90.0%</b>	<b>88.6%</b>
NSW	76,734	75,345	<b>88.4%</b>	<b>86.8%</b>
NT	2,113	1,991	<b>78.1%</b>	<b>73.6%</b>
QLD	47,795	45,863	<b>86.0%</b>	<b>82.5%</b>
SA	19,860	18,907	<b>84.7%</b>	<b>80.6%</b>
TAS	6,111	5,810	<b>86.8%</b>	<b>82.5%</b>
VIC	65,972	64,584	<b>88.9%</b>	<b>87.1%</b>
WA	22,043	20,269	<b>83.9%</b>	<b>77.1%</b>
<b>National</b>	<b>245,360</b>	<b>237,426</b>	<b>87.2%</b>	<b>84.4%</b>

Source: Linkage between National Disability Insurance Agency data and the Australian Immunisation Register. Total NDIS participants data as at 17 January. Australian Immunisation Register data as at 17 January. Includes all participants regardless of residence type.

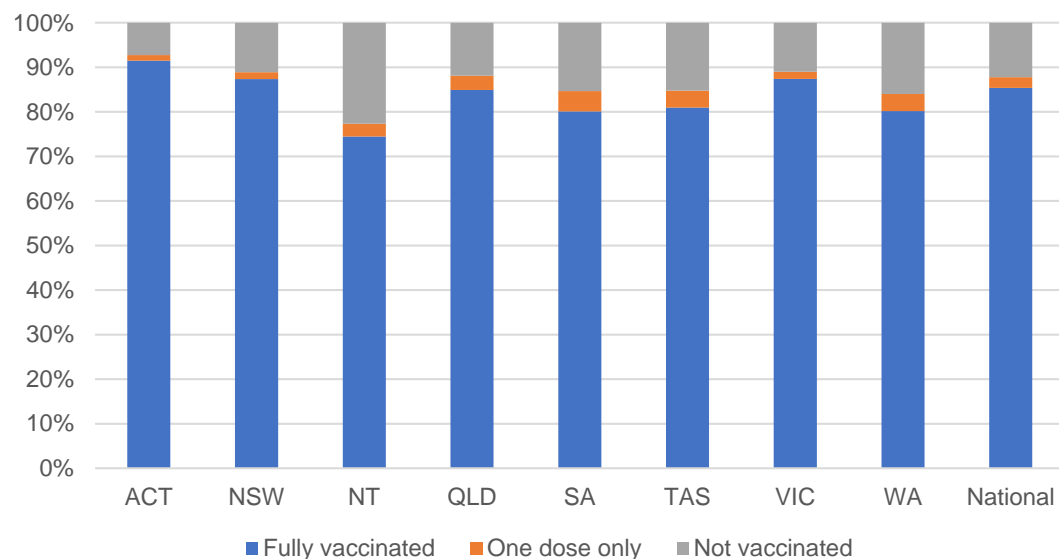
# National Disability Insurance Scheme (NDIS) reported vaccinations

Data as at:  
19 January 2022  
Updated Weekly

Australia's COVID-19  
Vaccine Roadmap

NATIONAL	Total people with at least one dose	People fully vaccinated	Total number of individuals in cohort	% People with at least one dose	% People fully vaccinated
NDIS participants living in disability accommodation	20,035	19,537	22,800	<b>87.90%</b>	<b>85.70%</b>

## NDIS participants in disability and aged care accommodation



Source: Linkage between National Disability Insurance Agency data and the Australian Immunisation Register. Includes participants residing in disability accommodation only.

Source: Total NDIS participants numbers as at 17 October. Participant data as at 13 December. Australian Immunisation Register data as at 14 December. Worker data as at 12 December.

## NDIS workforce vaccinations

	NDIS workers with at least one dose	NDIS workers fully vaccinated	% NDIS workers with at least one dose	% NDIS workers fully vaccinated
NSW	108,861	108,259	<b>96.6%</b>	<b>96.0%</b>
VIC	110,085	109,529	<b>97.5%</b>	<b>97.0%</b>
QLD	64,162	63,086	<b>96.0%</b>	<b>94.4%</b>
WA	30,982	30,035	<b>97.5%</b>	<b>94.6%</b>
SA	33,848	32,635	<b>98.1%</b>	<b>94.6%</b>
TAS	10,022	9,804	<b>98.5%</b>	<b>96.4%</b>
ACT	3,382	3,371	<b>99.3%</b>	<b>99.0%</b>
NT	3,052	3,006	<b>99.3%</b>	<b>97.9%</b>
<b>TOTAL</b>	<b>364,394</b>	<b>359,725</b>	<b>97.1%</b>	<b>95.8%</b>

Source: the NDIS Commission has established a requirement for registered NDIS providers who provide intensive disability support services to report on the vaccination status of workers they employ, or otherwise engage, to deliver NDIS-funded supports and services, and who are required to be vaccinated in accordance with in-force state and territory public health orders. The statistics reflect data reported to the NDIS Commission by registered NDIS providers and should be considered indicative and subject to change

Note: Some registered NDIS providers are yet to report on the vaccination status of their workforce. The NDIS Commission is working with those providers around reporting requirements.

Remaining workers not included include those exempt from vaccination requirements, workers whose vaccination status is not yet verified by the provider (such as workers on leave) and provider reporting anomalies.

# Residential aged care vaccination rollout

Data as at: 24 Jan 2022

**Residential aged care facilities status**

**100%**

Commonwealth facilities visited (2,590 planned sites)

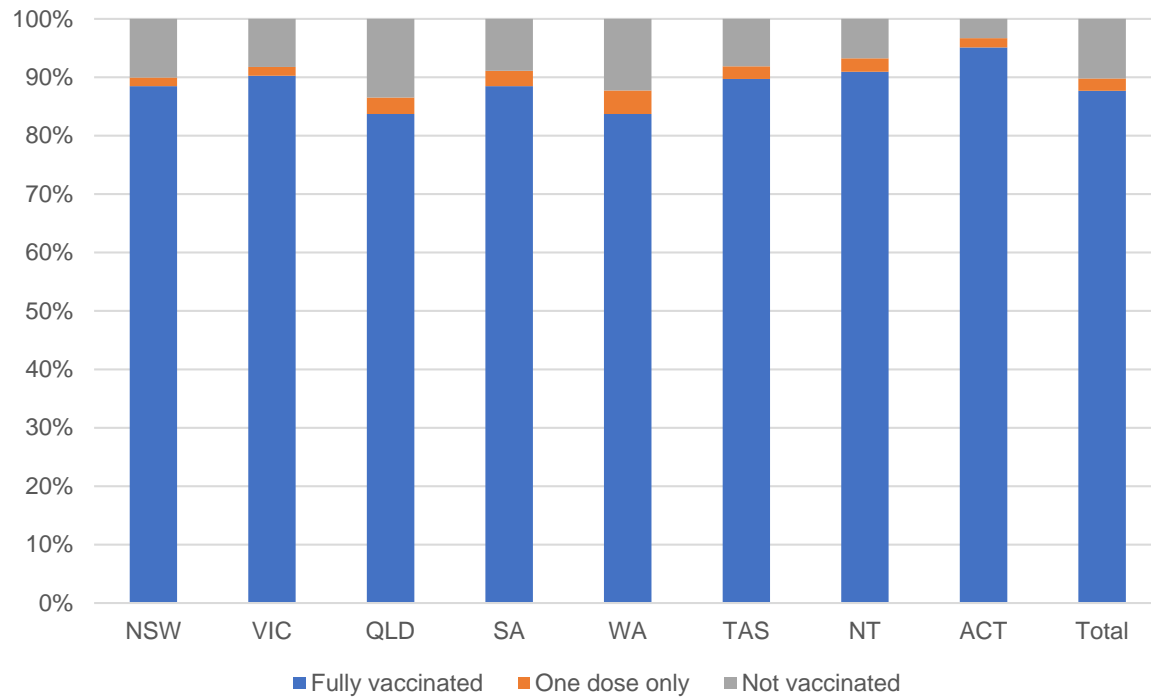
**169,775**

People fully vaccinated

**173,839**

People with at least one dose

## Aged care resident vaccinations



## Aged care worker vaccinations

Jurisdictions	Total workers with at least one dose	Workers fully vaccinated	% Workers with at least one dose	% Workers fully vaccinated
NSW	79,165	79,126	99.3%	99.2%
VIC	71,150	71,150	99.7%	99.7%
QLD	48,707	48,691	99.5%	99.5%
SA	27,293	27,246	98.8%	98.7%
WA	23,834	23,757	99.9%	99.6%
TAS	7,583	7,568	99.4%	99.2%
NT	835	834	100.0%	99.9%
ACT	3,035	3,035	100.0%	100.0%
<b>Total</b>	<b>261,602</b>	<b>261,407</b>	<b>99.5%</b>	<b>99.4%</b>

Source: My Aged Care Portal vaccination progress

\*Status updates are provided by facilities at least once per week. Reporting is updated Monday to Friday to encompass different facility updates being made on different days.

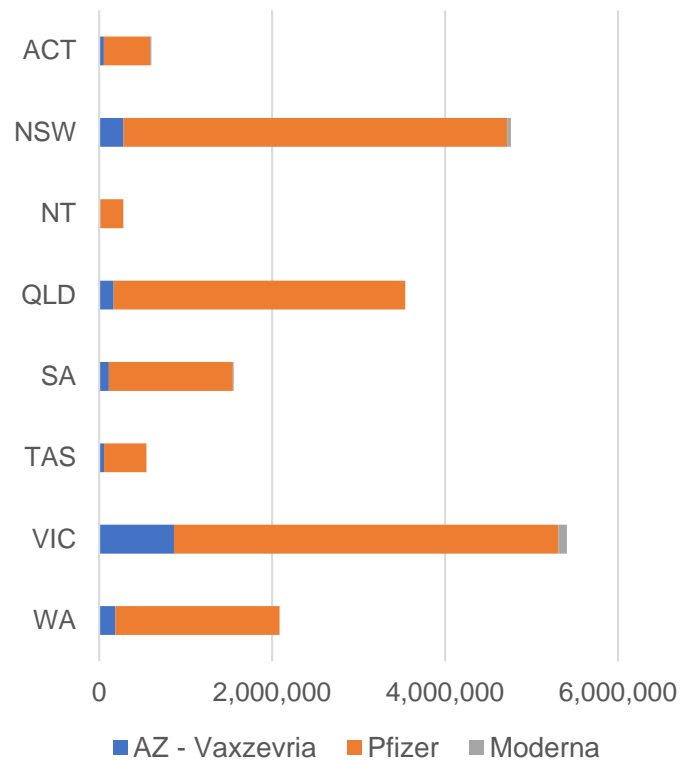
Data is sourced directly from Aged Care Service Providers and is not drawn or closely aligned with data from AIR due to inconsistencies and potential lags in uploading of records.



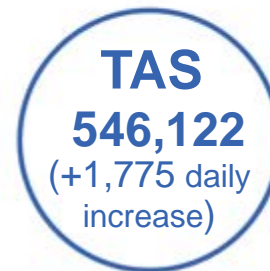
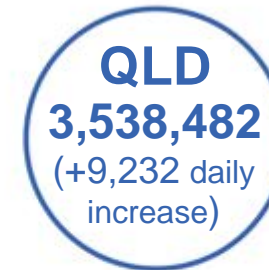
Data as at:  
25 Jan 2022

## Jurisdiction administered

Total vaccine doses administered in State and Territory clinics as at 25 January



**18,780,023** total vaccine doses administered in State and Territory clinics as at 25 January  
 + 68,196 recorded in the last 24 hours  
 + 540,495 recorded in the last 7 days



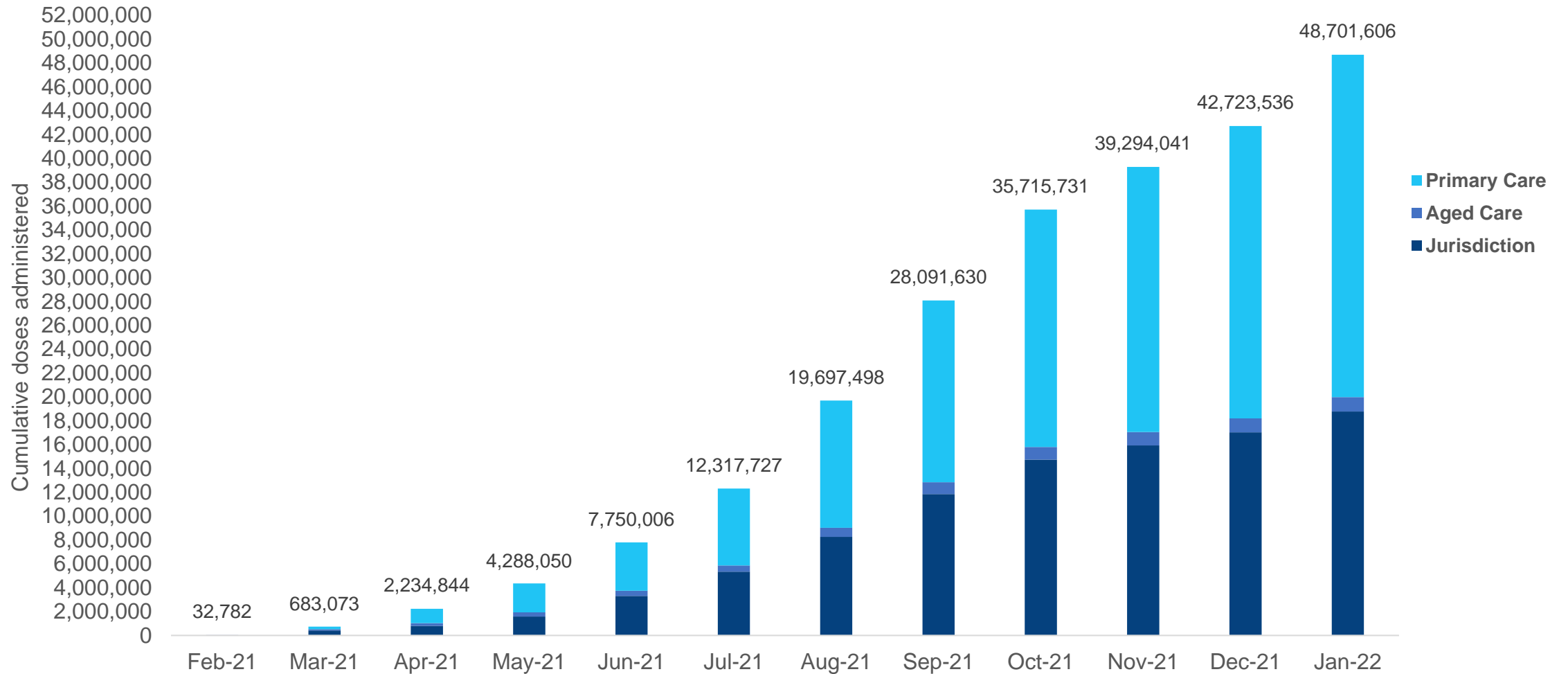
\*Sourced from the Australian Immunisation Register. Numbers are calculated as difference in daily cumulative reported numbers to allow for historical corrections.

Source: Australian Immunisation Register



Data as at:  
25 Jan 2022

# Cumulative doses administered by channel



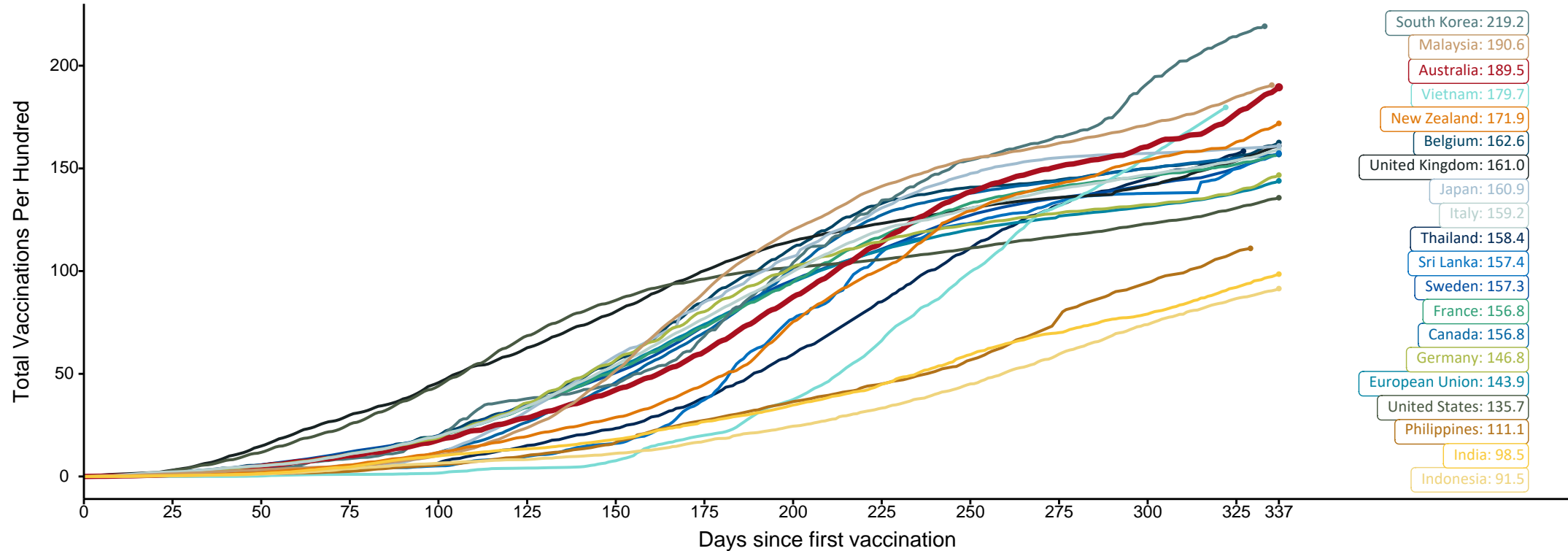
Source: Australian Immunisation Register

# Doses at equivalent stages of rollout (Day 337)

Data as at:  
25 Jan 2022

The x-axis is truncated at the length of Australia's vaccination program. Countries with intermittent reporting have had their doses per 100 imputed to Australia's current stage of rollout. Israel excluded as it is beyond scale of the graph

Cumulative doses administered (25 Jan): **48,701,606**

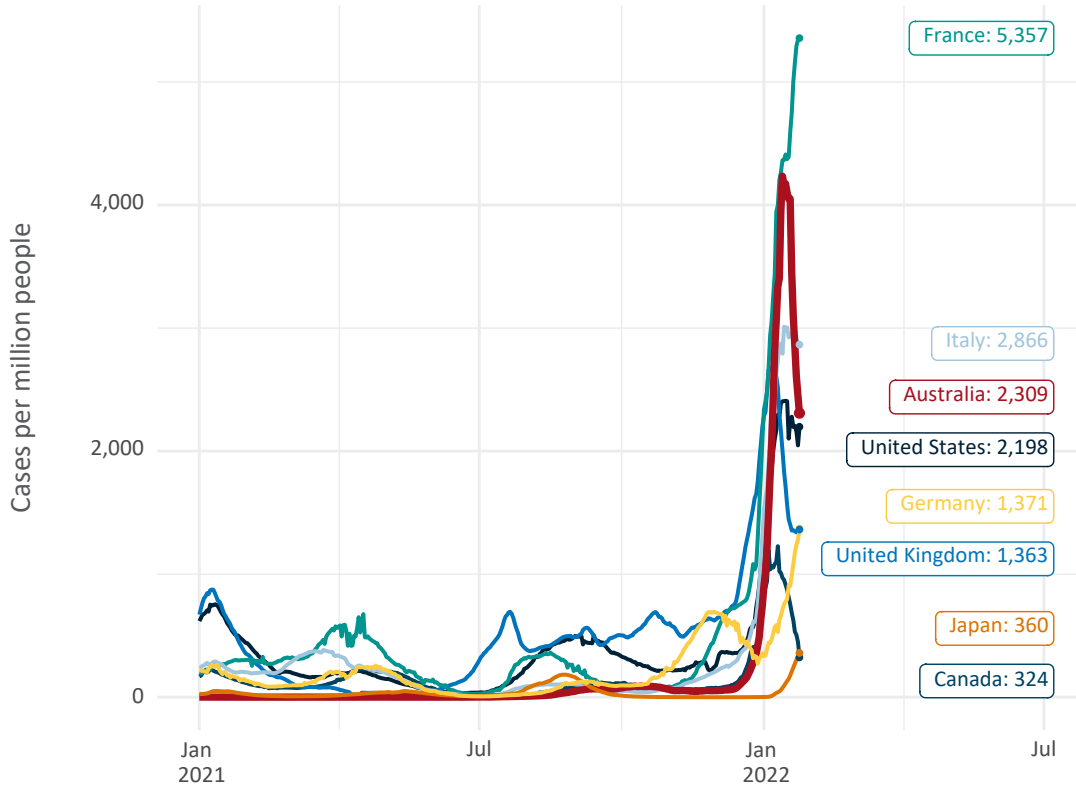


Note: From 15 September 2021, data for Australia includes all doses administered to people 12 and over. Prior to 15 September, data was for 16 and over  
 Due to data revisions, Singapore has been removed from the chart  
 Source: Department of Health (Australia), Our World in Data (international)  
 Latest data: 25 January

Data as at: 25 Jan 2022

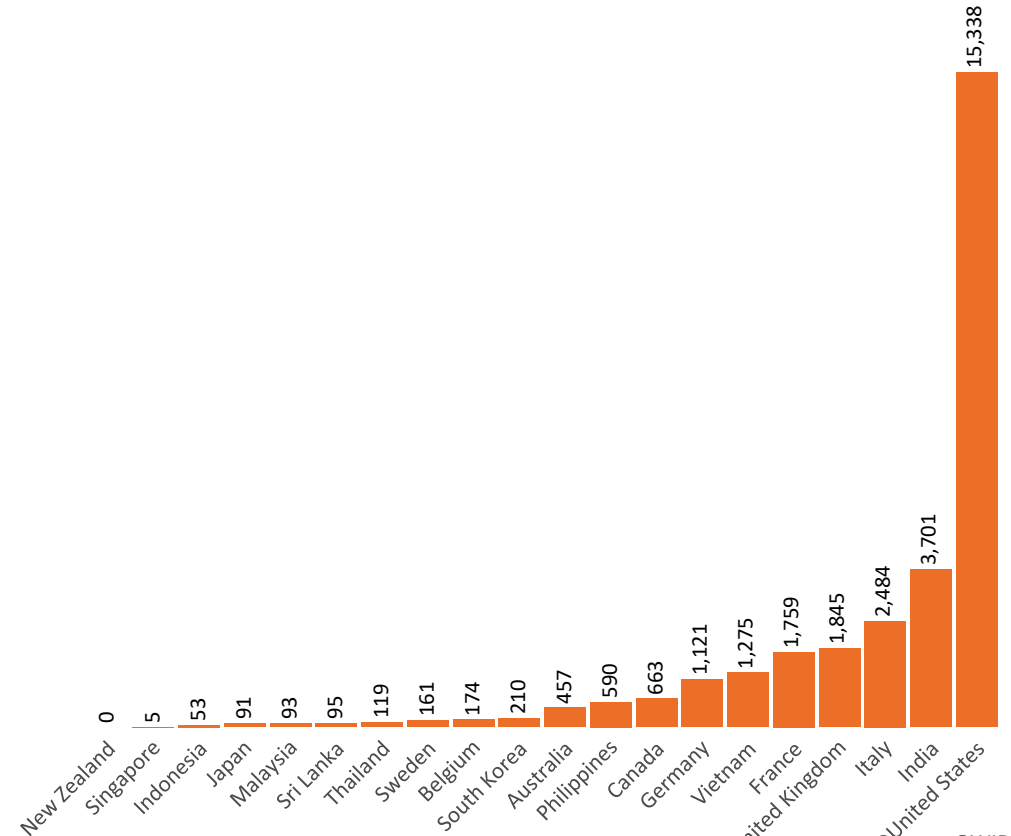
# International data – COVID-19

New daily cases per million in 2021, Australia and G7 countries  
Smoothed - 7 day average



Source: OWID  
Data downloaded: 26 Jan 2022 08:16  
Latest data: 24 Jan 2022


COVID-19 deaths in past 7 days - Australia and select countries



Source: OWID  
Data downloaded: 26 Jan 2022 08:16  
Latest data: 24 Jan 2022

**Data as at midnight:  
23 Jan 2022  
Updated weekly**

# Pandemic Response Payments



**2.38 million**  
People have received at least one COVID Disaster Payment (including ISP200)

---

**\$13.31 billion**  
Paid Out as at 23 Jan 2022

---


**6.43 million**  
Claims granted across three different payments



**96%**  
of Claims Received Digitally



COVID Disaster Payment:	5.89 million claims received - 2.19 million individuals paid a total of \$12.59 billion.
\$200 Income Support Payment:	353,000 claims received - 183,000 individuals paid a total of \$268.91 million.
Pandemic Leave Disaster Payment:	600,000 claims received - 403,000 individuals paid a total of \$451.9 million.



**THREE PAYMENTS AVAILABLE**

[COVID Disaster Payment](#)  
assisting during a lockdown event in a Commonwealth hotspot.

[Income Support Payment \\$200](#)  
for income support recipients who lost at least 8 hours of work.

[Pandemic Leave Disaster Payment](#)  
for those who have to self-isolate, quarantine or care.

For more information visit:  
[servicesaustralia.gov.au](http://servicesaustralia.gov.au)

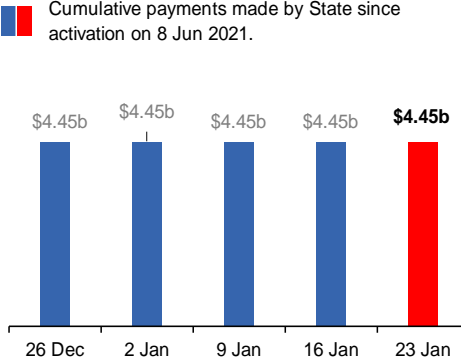
## COVID-19 DISASTER PAYMENTS

**Victoria**  
Lockdown (#6) from 6 Aug to 28 Oct  
Claiming period ended 9 Dec

745,000 people have received at least one COVID Disaster Payment.

\$4.45b paid out as at 23 Jan 2022.

\$9,000 paid in initial and reoccurring payments in the week ending 23 Jan 2022.

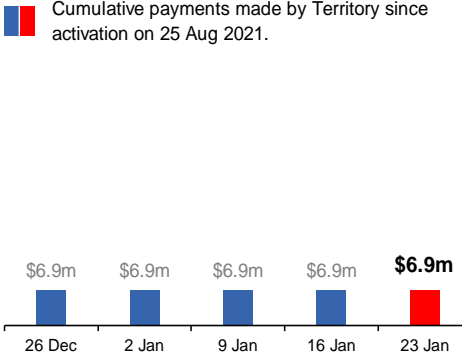


**Northern Territory**  
Lockdown (#3) from 16 Nov to 22 Nov  
Claiming period ends 27 Dec

7,500 people have received at least one COVID Disaster Payment.

\$6.9m paid out as at 23 Jan 2022.

\$0 paid in initial payments in the week ending 23 Jan 2022.

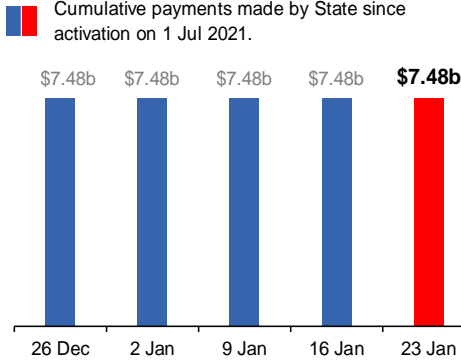


**New South Wales**  
Lockdown from 24 Jun to 10 Oct  
Claiming period ended 27 Nov

1.08m people have received at least one COVID Disaster Payment.

\$7.48b paid out as at 23 Jan 2022.

\$11,000 paid in initial and reoccurring payments in the week ending 23 Jan 2022.

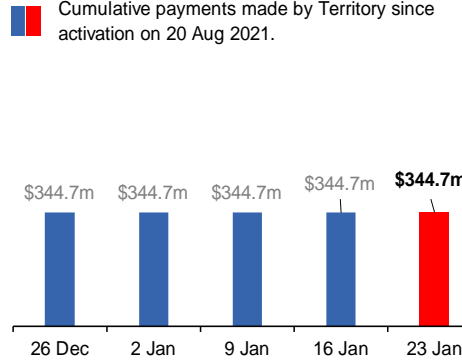


**Australian Capital Territory**  
Lockdown from 12 Aug to 14 Oct  
Claiming period ended 25 Nov

65,000 people have received at least one COVID Disaster Payment.

\$344.7m paid out as at 23 Jan 2022.

\$1,000 paid in initial and reoccurring payments in the week ending 23 Jan 2022.



Data as at midnight:  
23 Jan 2022  
Updated weekly

# Pandemic Response Payments (continued)

## COVID-19 DISASTER PAYMENTS

### Tasmania

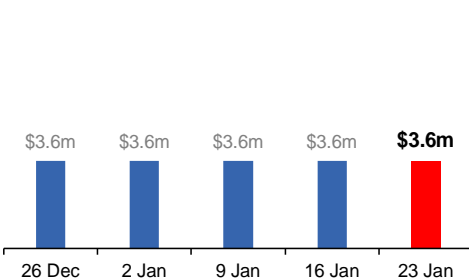
Lockdown from 15 Oct to 18 Oct  
Claiming period ended 12 Nov

6,900 people have received at least one COVID Disaster Payment.

\$3.6m paid out as at 23 Jan 2022.

\$0 paid in initial and reoccurring payments in the week ending 23 Jan 2022.

Cumulative payments made by State since activation on 22 Oct 2021.



### Queensland

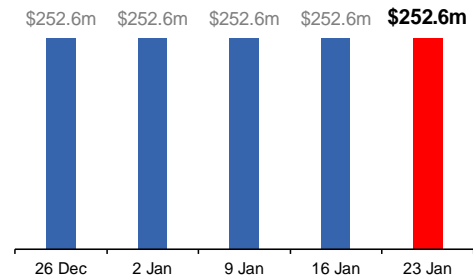
Lockdown from 31 Jul to 11 Aug  
Claiming period ended 28 Aug

196,000 people have received at least one COVID Disaster Payment.

\$252.6m paid out as at 23 Jan 2022.

\$0 paid in initial and reoccurring payments in the week ending 23 Jan 2022.

Cumulative payments made by State since activation on 7 Aug 2021.



### South Australia

Lockdown from 21 to 27 Jul  
Claiming period ended 17 Aug

86,000 people have received at least one COVID Disaster Payment.

\$48.2m paid out as at 23 Jan 2022.

\$0 paid in initial and reoccurring payments in the week ending 23 Jan 2022.

Cumulative payments made by State since activation on 28 Jul 2021.

