



Australian Government
Operation COVID Shield

COVID-19 Vaccine Roll-out

25 January 2022

Data as at:
24 Jan 2022

Total vaccine doses



48,377,727 total vaccine doses administered nationally as at 24 January
+322,467 recorded in the last 24 hours



19,670,070

people have had at least one dose

>95%

of people over the age of 16 have had at least one dose



19,180,099

people are fully vaccinated

93.0%

of people over the age of 16 are fully vaccinated



6,793,237

people over the age of 18 who have received more than two doses

NSW
15,392,650
(+99,440 daily increase)

VIC
12,742,368
(+87,779 daily increase)

QLD
9,345,897
(+52,218 daily increase)

WA
4,855,317
(+41,388 daily increase)

TAS
1,070,863
(+6,900 daily increase)

SA
3,314,334
(+22,671 daily increase)

ACT
1,183,946
(+9,497 daily increase)

NT
472,352
(+2,574 daily increase)

*Administration state breakdown indicates state in which a vaccine was administered

**Overall dose count includes instances of more than two doses per person in a small number of cases.

Source: Australian Immunisation Register

Booster Vaccinations

Data as at:
24 Jan 2022



6,793,237 total people over the age of 18 years old
who have received more than two doses nationally

+246,854 people who have received more than two doses
nationally in the last 24 hours

NSW
2,238,648
(79,663 daily
increase)

VIC
1,780,459
(69,983 daily
increase)

QLD
1,250,361
(39,312 daily
increase)

WA
645,776
(27,250 daily
increase)

TAS
148,473
(4,794 daily
increase)

SA
493,140
(17,214 daily
increase)

ACT
141,243
(5,416 daily
increase)

NT
55,461
(1,632 daily
increase)

39,676 doses administered to persons
residing in other territories or with
missing residential information

Source: Australian Immunisation Register

Data as at: 24 Jan 2022

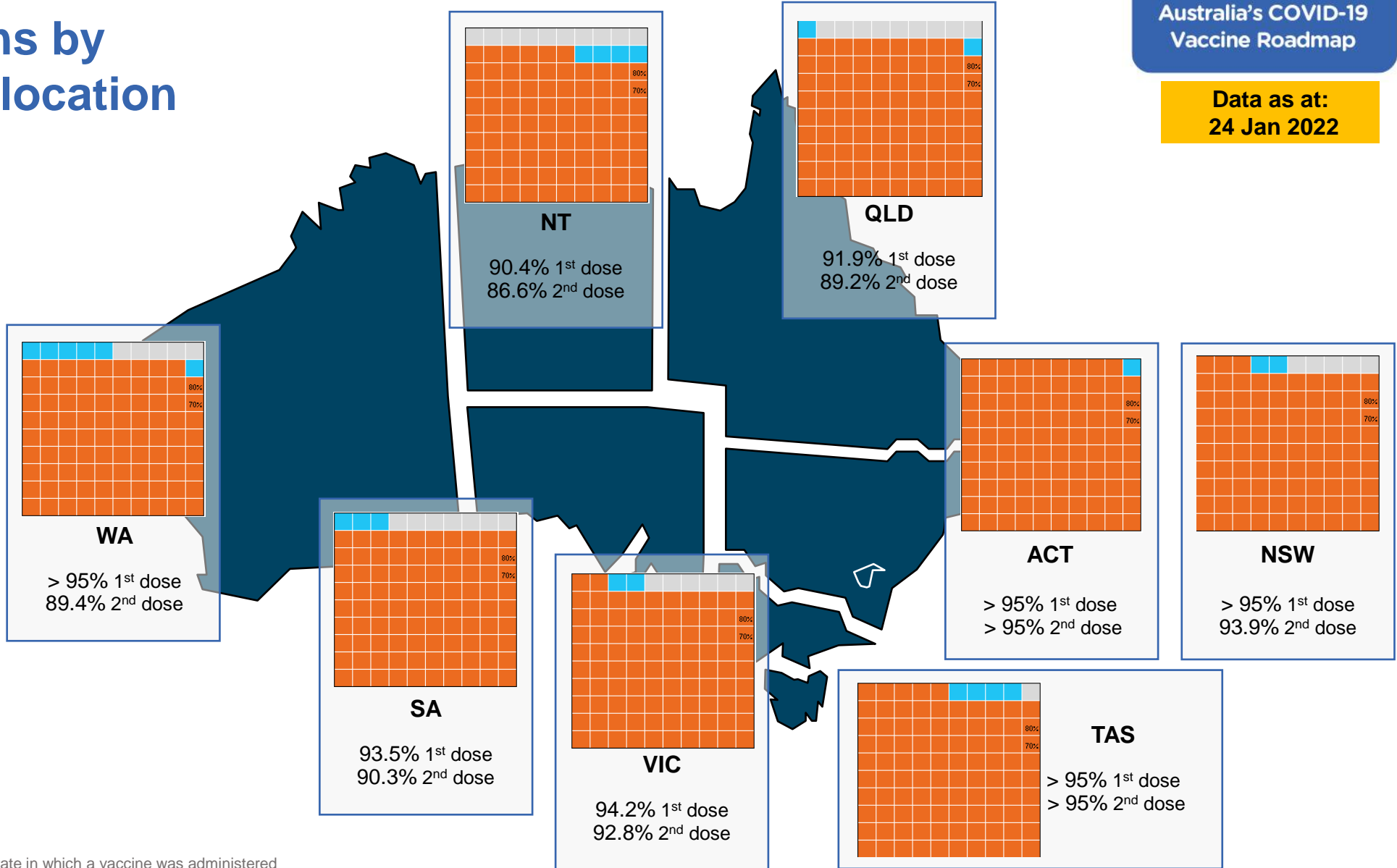
Vaccinations by residential location

First doses

| Age | Today | 4 weeks ago | 8 weeks ago |
|-----|-------|-------------|-------------|
| 16+ | >95% | 94.4% | 92.8% |
| 50+ | >95% | >95% | >95% |
| 70+ | >95% | >95% | >95% |

Fully vaccinated

| Age | Today | 4 weeks ago | 8 weeks ago |
|-----|-------|-------------|-------------|
| 16+ | 93.0% | 91.4% | 87.6% |
| 50+ | >95% | >95% | 94.6% |
| 70+ | >95% | >95% | >95% |



*Residential state may differ from the state in which a vaccine was administered

Commonwealth and Jurisdiction vaccine doses administered

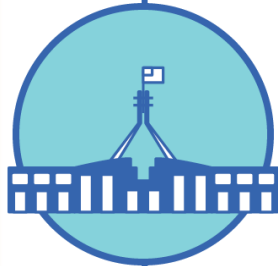
Data as at:
24 Jan 2022



48,377,727 total vaccine doses administered nationally as at 24 January
+ **322,467** recorded in the last 24 hours



18,711,827 doses administered by state and territory facilities
+ **77,144** recorded in the last 24 hours



29,665,900 doses administered by commonwealth facilities
+ **245,323** recorded in the last 24 hours
28,459,603 total vaccine doses administered in primary care settings
1,206,297 total vaccine doses administered in aged care and disability settings

| NSW | Jurisdictions | Commonwealth |
|----------------|---------------|--------------|
| Cumulative | 4,757,383 | 10,635,267 |
| Daily increase | 14,277 | 85,163 |

| VIC | Jurisdictions | Commonwealth |
|----------------|---------------|--------------|
| Cumulative | 5,384,025 | 7,358,343 |
| Daily increase | 27,268 | 60,511 |

| QLD | Jurisdictions | Commonwealth |
|----------------|---------------|--------------|
| Cumulative | 3,529,250 | 5,816,647 |
| Daily increase | 6,314 | 45,904 |

| WA | Jurisdictions | Commonwealth |
|----------------|---------------|--------------|
| Cumulative | 2,074,004 | 2,781,313 |
| Daily increase | 10,813 | 30,575 |

| TAS | Jurisdictions | Commonwealth |
|----------------|---------------|--------------|
| Cumulative | 544,347 | 526,516 |
| Daily increase | 3,044 | 3,856 |

| SA | Jurisdictions | Commonwealth |
|----------------|---------------|--------------|
| Cumulative | 1,546,573 | 1,767,761 |
| Daily increase | 9,574 | 13,097 |

| ACT | Jurisdictions | Commonwealth |
|----------------|---------------|--------------|
| Cumulative | 599,467 | 584,479 |
| Daily increase | 4,361 | 5,136 |

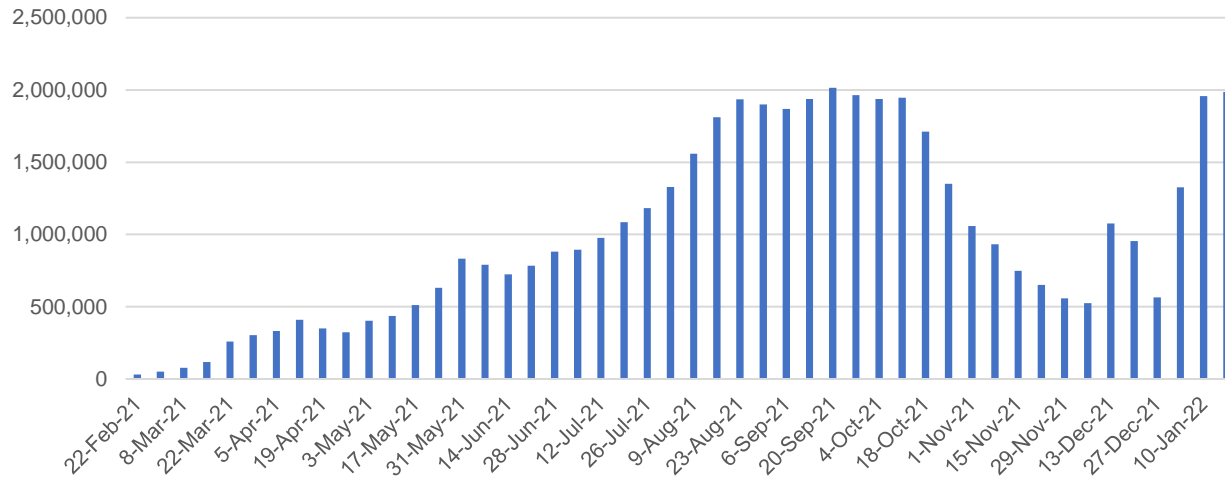
| NT | Jurisdictions | Commonwealth |
|----------------|---------------|--------------|
| Cumulative | 276,778 | 195,574 |
| Daily increase | 1,493 | 1,081 |

Vaccine milestone charts

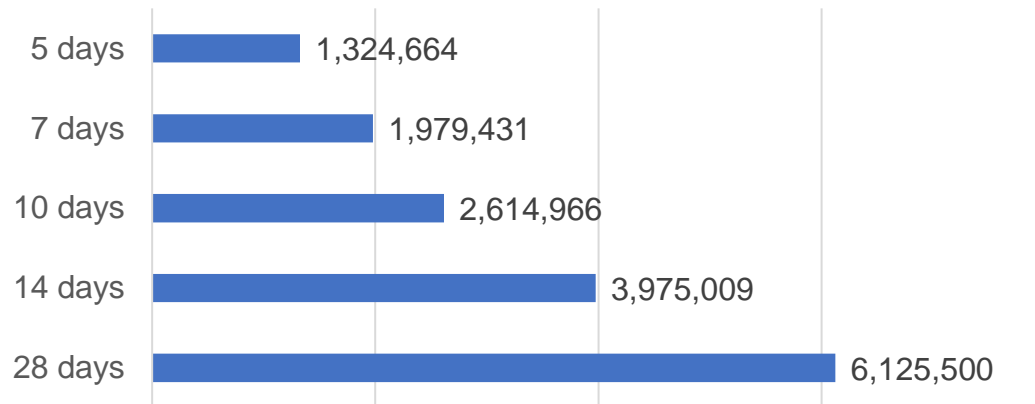
Data as at:
24 Jan 2022

Australia's COVID-19
Vaccine Roadmap

Doses Administered by Week

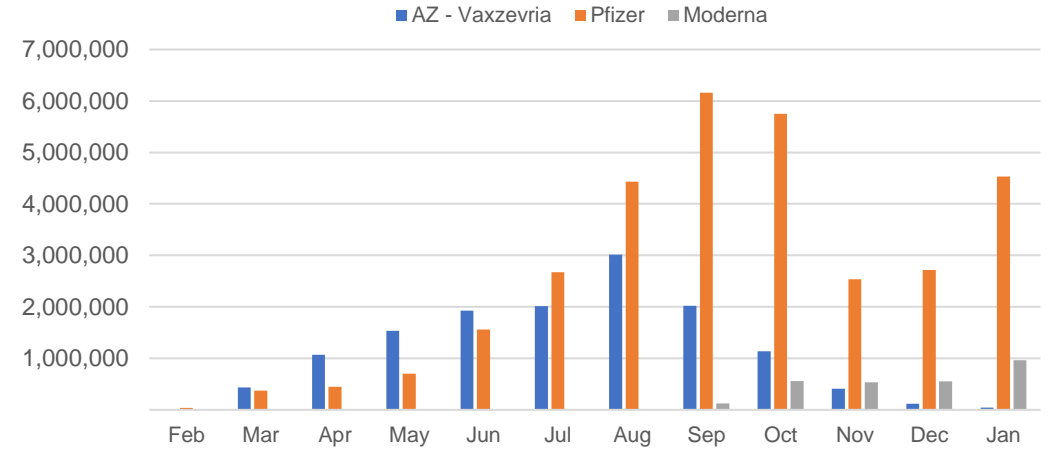


Doses Reported

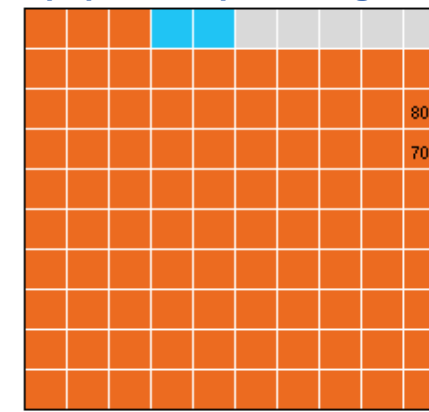


*Sourced from the Australian Immunisation Register.

Doses by administration month and vaccine type



Eligible population percentage coverage



1st dose: >95.0% 2nd dose: 93.0%

*Each square represents 1% of the national population. Squares are filled as milestones are achieved.

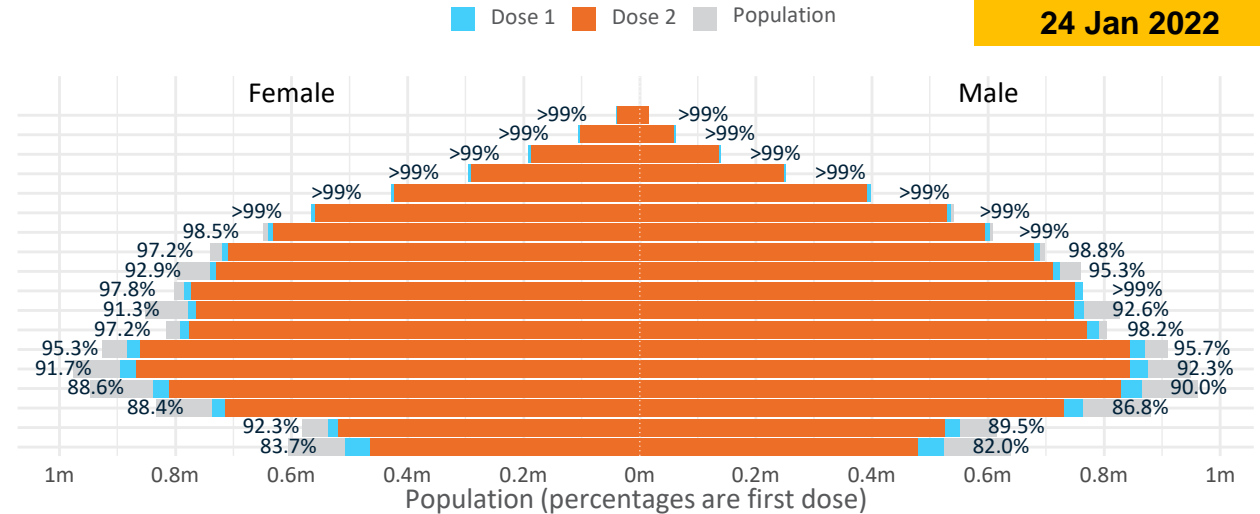
Doses by age and sex

First and second doses by age and sex

| | 16+ | 50+ | 12-15 | 5-11 |
|--------|---|---|---|---|
| Dose 1 | 95.39% (19,670,070 doses / 20,619,959 people) | >99% (8,749,703 doses / 8,749,703 people) | 82.83% (1,030,415 doses / 1,243,990 people) | 31.34% (713,561 doses / 2,276,638 people) |
| Dose 2 | 93.02% (19,180,099 doses / 20,619,959 people) | 97.77% (8,554,616 doses / 8,749,703 people) | 75.82% (943,169 doses / 1,243,990 people) | |

Data as at: 24 Jan 2022

| Age | Dose 1 | Dose 2 |
|-------|-------------------|-------------------|
| 95+ | 56,281 (>99%) | 52,552 (>99%) |
| 90-94 | 168,274 (>99%) | 161,327 (>99%) |
| 85-89 | 331,402 (>99%) | 321,993 (>99%) |
| 80-84 | 548,262 (>99%) | 537,997 (>99%) |
| 75-79 | 826,134 (>99%) | 814,454 (>99%) |
| 70-74 | 1,102,466 (>99%) | 1,087,661 (98.4%) |
| 65-69 | 1,244,789 (98.9%) | 1,226,754 (97.5%) |
| 60-64 | 1,408,933 (98.1%) | 1,387,374 (96.6%) |
| 55-59 | 1,464,968 (94.2%) | 1,441,983 (92.7%) |
| 50-54 | 1,549,073 (>99%) | 1,522,521 (97.3%) |
| 45-49 | 1,543,275 (92.0%) | 1,513,074 (90.2%) |
| 40-44 | 1,584,846 (97.8%) | 1,547,600 (95.5%) |
| 35-39 | 1,757,415 (95.8%) | 1,708,272 (93.1%) |
| 30-34 | 1,777,826 (92.4%) | 1,716,561 (89.2%) |
| 25-29 | 1,712,937 (89.8%) | 1,646,568 (86.4%) |
| 20-24 | 1,505,798 (87.9%) | 1,448,812 (84.6%) |
| 16-19 | 1,087,391 (90.9%) | 1,044,596 (87.4%) |
| 12-15 | 1,030,415 (82.8%) | 943,169 (75.8%) |



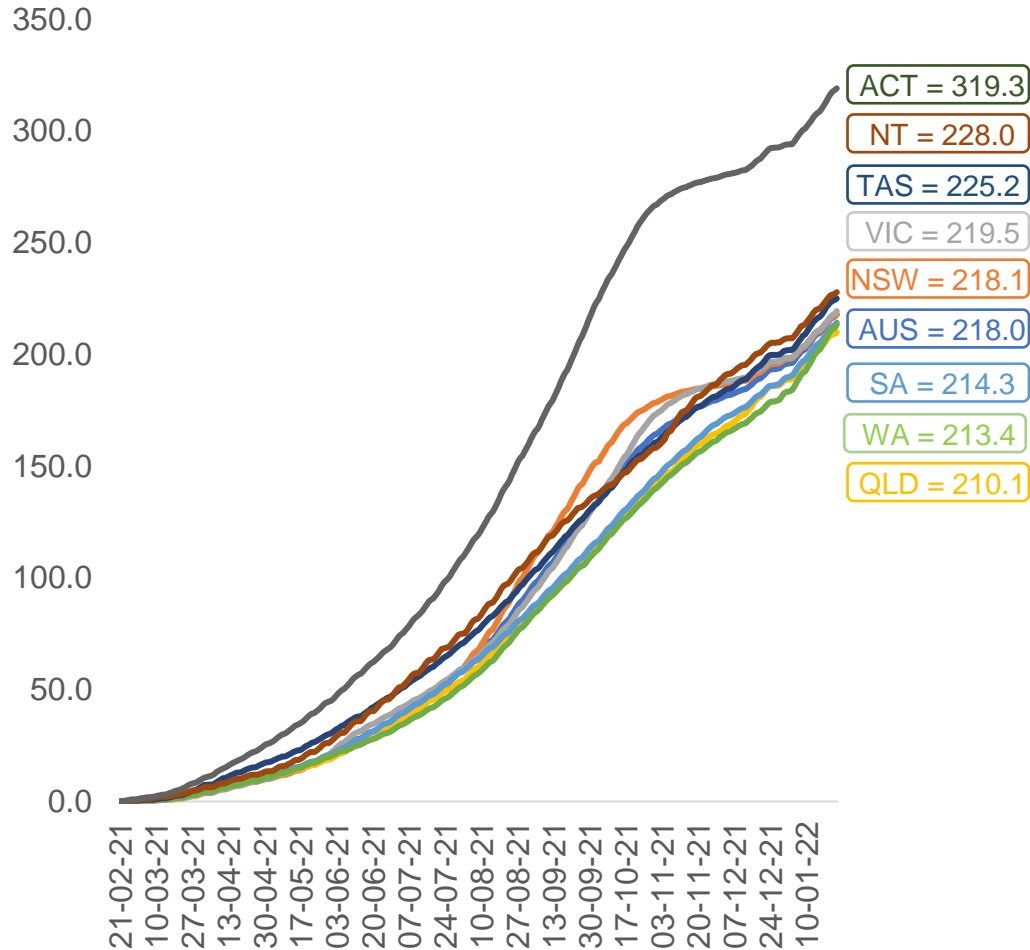
DOH (Australian Immunisation Register), ABS (Population)

| | AUS | ACT | NSW | NT | QLD | SA | TAS | VIC | WA |
|---------------------------|-------------|---------|-----------|---------|-----------|-----------|---------|-----------|-----------|
| 16 and over - dose 1 | 19,670,070 | 348,369 | 6,260,214 | 172,229 | 3,777,660 | 1,346,260 | 436,340 | 5,091,604 | 2,014,900 |
| 16 and over - dose 2 | 19,180,099 | 343,619 | 6,166,662 | 165,127 | 3,670,269 | 1,300,087 | 421,905 | 5,019,923 | 1,890,046 |
| 16 and over - population | 20,619,959* | 344,037 | 6,565,651 | 190,571 | 4,112,707 | 1,440,400 | 440,172 | 5,407,574 | 2,114,978 |
| 16 and over % with dose 1 | 95.39% | >99% | 95.35% | 90.38% | 91.85% | 93.46% | >99% | 94.16% | 95.27% |
| 16 and over % with dose 2 | 93.02% | >99% | 93.92% | 86.65% | 89.24% | 90.26% | 95.85% | 92.83% | 89.36% |
| 5 to 11 - dose 1 | 713,561 | 21,600 | 222,365 | 7,549 | 134,873 | 50,307 | 19,744 | 196,177 | 57,348 |
| 5 to 11 - population | 2,276,638 | 39,789 | 716,460 | 24,750 | 478,731 | 148,816 | 45,033 | 578,499 | 244,154 |
| 5 to 11 % with dose 1 | 31.34% | 54.29% | 31.04% | 30.50% | 28.17% | 33.80% | 43.84% | 33.91% | 23.49% |
| 12 to 15 - dose 1 | 1,030,415 | 19,886 | 323,317 | 10,598 | 202,345 | 66,405 | 22,031 | 273,655 | 103,405 |
| 12 to 15 - dose 2 | 943,169 | 19,130 | 305,792 | 9,132 | 180,180 | 59,108 | 19,787 | 260,305 | 82,432 |
| 12 to 15 - population | 1,243,990 | 19,693 | 390,330 | 13,060 | 270,146 | 82,747 | 26,308 | 308,611 | 132,869 |
| 12 to 15 % with dose 1 | 82.83% | >99% | 82.83% | 81.15% | 74.90% | 80.25% | 83.74% | 88.67% | 77.82% |
| 12 to 15 % with dose 2 | 75.82% | 97.14% | 78.34% | 69.92% | 66.70% | 71.43% | 75.21% | 84.35% | 62.04% |

*National population will not equal sum of listed jurisdictions due to a small number of people counted in national population residing in some 'other' territories. Sum of state doses will not add to national total as some records are unable to be geocoded to a State or Territory. Doses sourced from Australian Immunisation Register, population from ABS ERP June 2020

Vaccinations by location

Cumulative total doses administered vs eligible state populations*

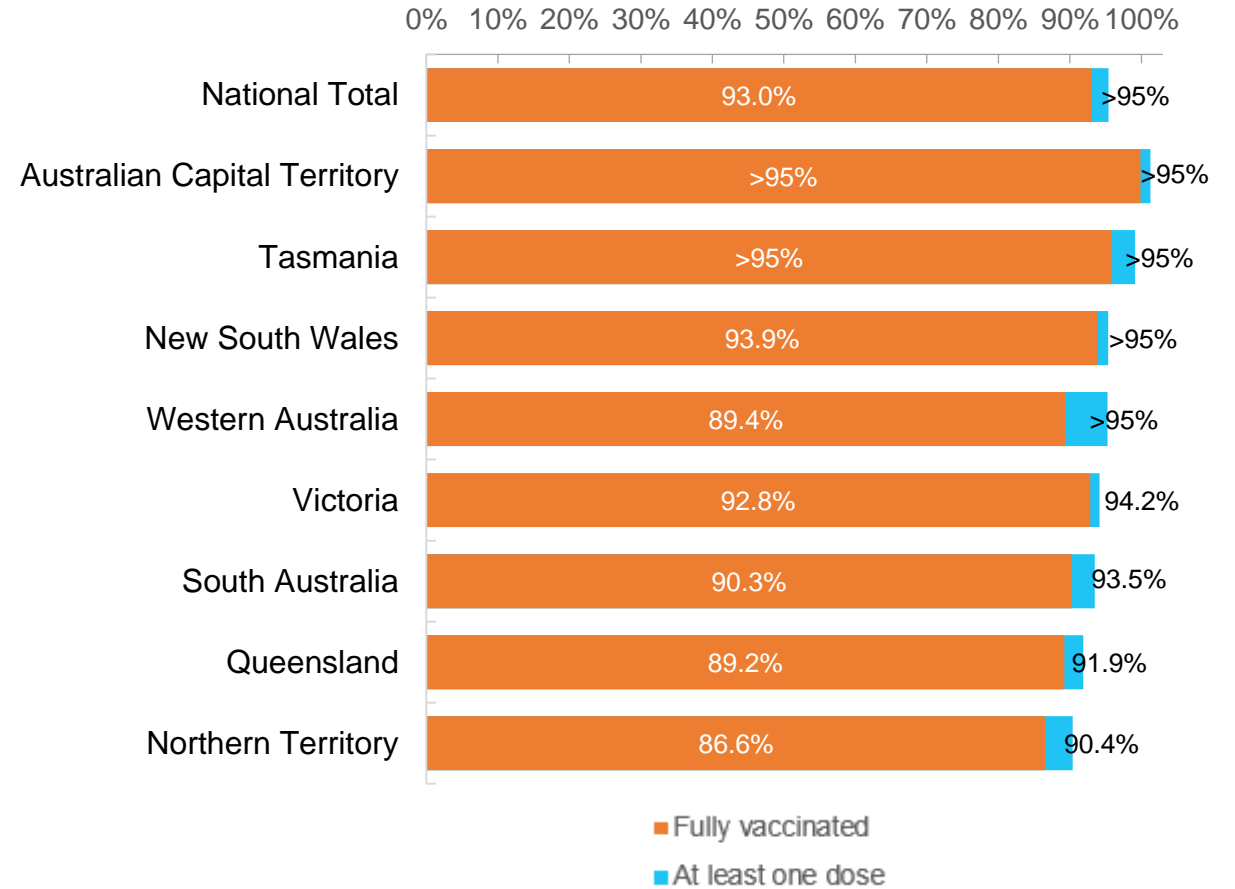


*Not an indication of percentage vaccinated, numbers will exceed 100 due to multiple doses required per person of the population. All doses are included for those aged 12 and above, and are based on vaccination provider location.

Data as at:
24 Jan 2022

Australia's COVID-19
Vaccine Roadmap

First and Second Doses by residential location



Aboriginal and Torres Strait Islander peoples

Number of people vaccinated

Data as at:
18 Jan 2022
Updated weekly

Australia's COVID-19
Vaccine Roadmap



422,837

people over the age of 16
have had at least one dose

80.7%

of people over the age of 16
have had at least one dose



389,157

people over the age of 16
are fully vaccinated

74.3%

of people over the age of 16 are
fully vaccinated



**44,618
(62.6%)**

people aged 12-15 years
have had at least one dose

173 Aboriginal community controlled health services (ACCHS)

| | | | | | | | |
|------------|------------|-----------|------------|-----------|------------|------------|-----------|
| 0# | 50 | 27 | 41 | 12 | 3 | 21 | 19 |
| ACT | NSW | NT | QLD | SA | TAS | VIC | WA |

| Medicare Address State ^{##} | Individuals Dose 1 | Individuals Dose 1 % | Individuals Dose 2 | Individuals Dose 2 % |
|--------------------------------------|--------------------|----------------------|--------------------|----------------------|
| Australian Capital Territory | 4,912 | 90.9% | 4,767 | 88.2% |
| New South Wales | 136,460 | 86.3% | 132,696 | 84.0% |
| Northern Territory | 40,694 | 86.3% | 36,609 | 77.6% |
| Queensland | 111,437 | 78.0% | 101,243 | 70.9% |
| South Australia | 19,123 | 75.9% | 16,982 | 67.4% |
| Tasmania | 14,457 | 86.5% | 13,652 | 81.7% |
| Victoria | 35,378 | 88.8% | 34,339 | 86.2% |
| Western Australia | 45,410 | 71.6% | 36,609 | 57.8% |
| Unknown/Other Territories | 14,966 | 59.0% | 12,260 | 48.4% |
| Totals | 422,837 | 80.7% | 389,157 | 74.3% |

Source: Australian Immunisation Register

*Identifying as Aboriginal and Torres Strait Islander is optional and the estimated population may be under reported.

**Includes all Aboriginal and Torres Strait Islander peoples who have received a vaccination, not limited to those administered in an ACCHS setting

#ACCHS in the ACT are currently operating as a Commonwealth Vaccine Clinics so not included to avoid double counting

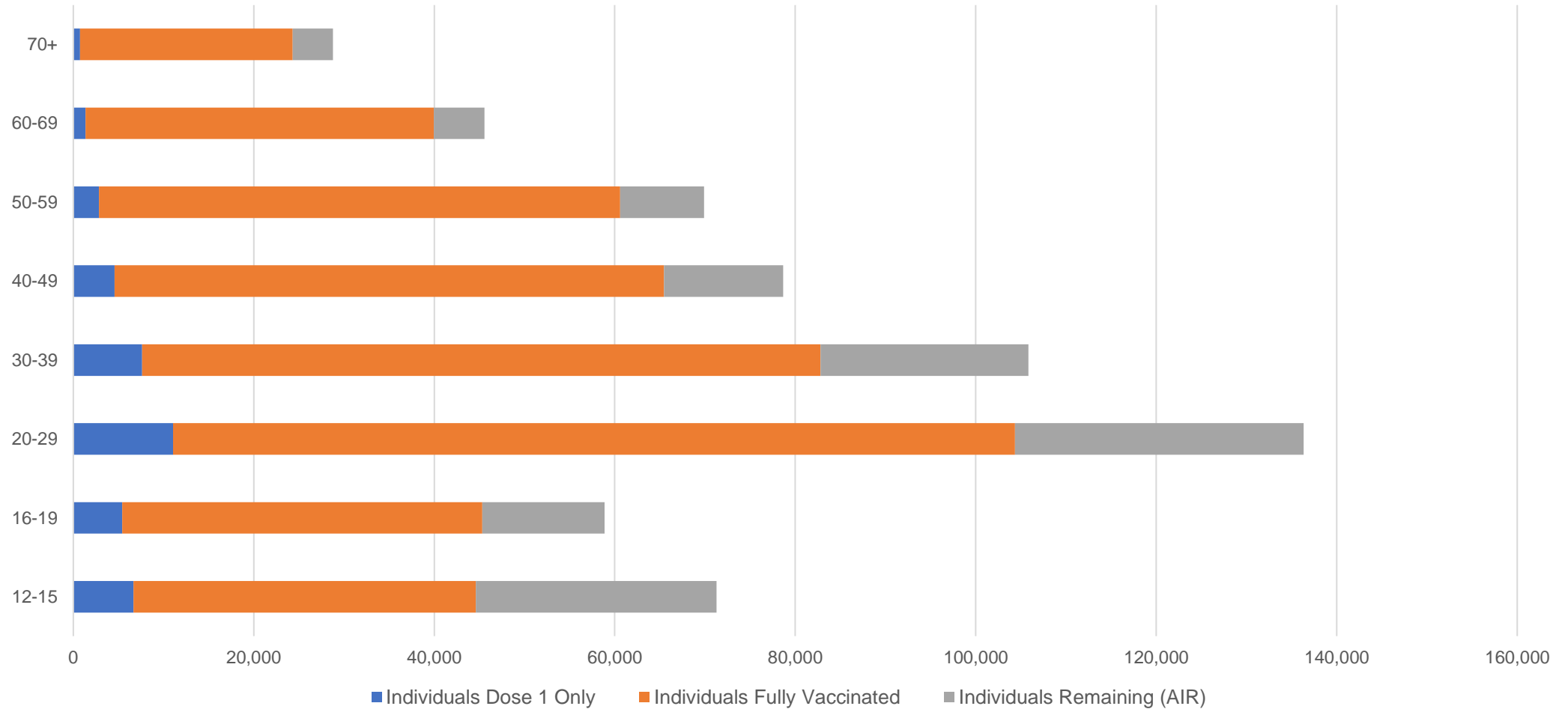
##The above table includes all identified Aboriginal and Torres Strait Islander people who are aged 16 and above by their state of residence.

Aboriginal and Torres Strait Islander peoples

Number of people vaccinated by age

Data as at:
18 Jan 2022
Updated weekly

Australia's COVID-19
Vaccine Roadmap



Source: Australian Immunisation Register

Commonwealth primary care

Data as at:
24 Jan 2022

Australia's COVID-19
Vaccine Roadmap



Primary care vaccine administration sites

| | | | |
|--------------|------------|------------|--------------|
| 5,714 | 128 | 174 | 3,494 |
| GPs | CVCs | ACCHS | Pharmacies |



28,459,603 total vaccine doses administered
primary care settings as at 24 January

+ 242,902 recorded in the last 24 hours

Primary care vaccinations by provider type

| | Doses administered | Daily increase | 7 day increase |
|---|--------------------|----------------|----------------|
| General Practice* includes other Commonwealth | 23,894,148 | 167,615 | 986,950 |
| Pharmacy | 4,565,455 | 75,287 | 435,209 |

NSW
10,108,465
(+84,567 daily increase)

VIC
7,081,674
(+59,523 daily increase)

QLD
5,557,410
(+44,723 daily increase)

WA
2,668,701
(+30,248 daily increase)

TAS
509,154
(+3,818 daily increase)

SA
1,693,907
(+12,886 daily increase)

ACT
452,315
(+4,805 daily increase)

NT
175,363
(+1,067 daily increase)

212,614

doses administered to persons
residing in other territories or with
missing residential information

*General practice includes Commonwealth Vaccination Clinics, Aboriginal Community Health Centres, Royal Flying Doctor Service and other Commonwealth vaccination facilities

Source: Australian Immunisation Register

Data as at:
24 Jan 2022

Commonwealth aged care and disability doses administered



1,206,297 (+ 2,421 last 24 hours)

Total vaccine doses administered in aged care and disability facilities as at 24 January

Number of doses administered as part of the Commonwealth aged and disability care rollout

NSW
545,140
(+402 daily increase)

VIC
226,343
(+802 daily increase)

QLD
189,282
(+552 daily increase)

WA
91,075
(+345 daily increase)

TAS
21,485
(+10 daily increase)

SA
80,260
(+204 daily increase)

ACT
15,817
(+6 daily increase)

NT
6,905
(+4 daily increase)

29,990

doses administered to persons residing in other territories or with missing residential information

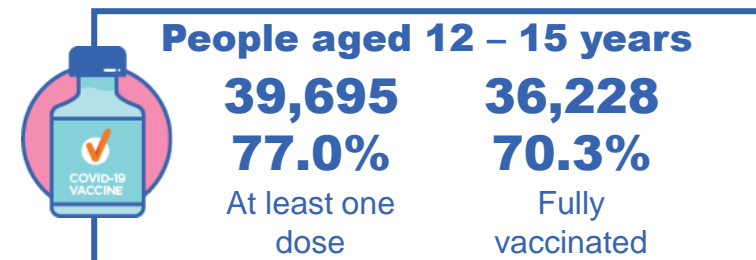
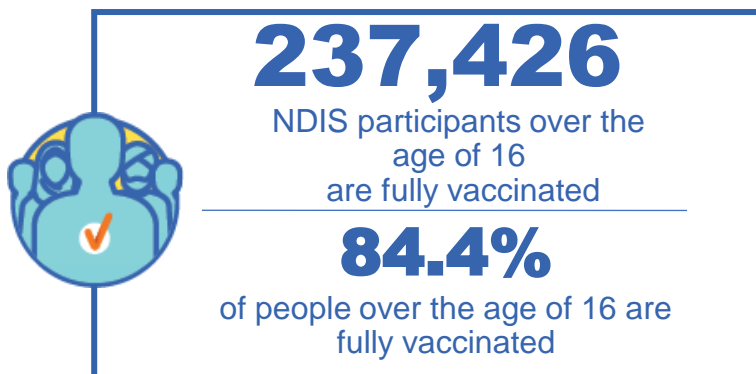
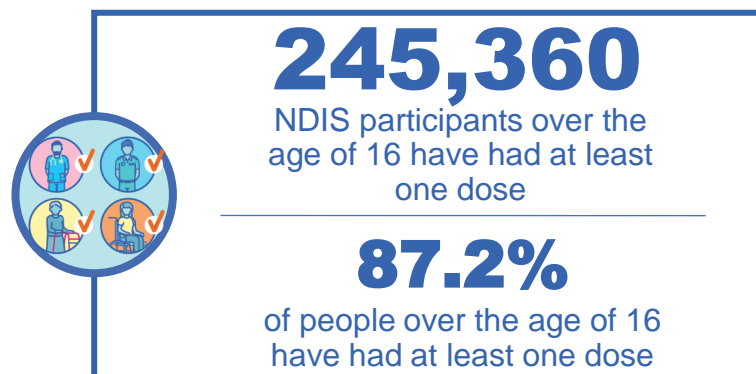
*Sourced from the Australian Immunisation Register. Includes all persons vaccinated at participating residential aged care, disability and related industry settings.
**State level breakdown indicates the residential location and may not align to the state in which the vaccination occurred.

Source: Australian Immunisation Register

National Disability Insurance Scheme (NDIS) reported vaccinations

Data as at:
19 January 2022
Updated weekly

Australia's COVID-19
Vaccine Roadmap



NDIS participant vaccinations

| | People aged 16+ with at least one dose | People aged 16+ fully vaccinated | % People aged 16+ with at least one dose | % People aged 16+ fully vaccinated |
|-----------------|--|----------------------------------|--|------------------------------------|
| ACT | 4,732 | 4,657 | 90.0% | 88.6% |
| NSW | 76,734 | 75,345 | 88.4% | 86.8% |
| NT | 2,113 | 1,991 | 78.1% | 73.6% |
| QLD | 47,795 | 45,863 | 86.0% | 82.5% |
| SA | 19,860 | 18,907 | 84.7% | 80.6% |
| TAS | 6,111 | 5,810 | 86.8% | 82.5% |
| VIC | 65,972 | 64,584 | 88.9% | 87.1% |
| WA | 22,043 | 20,269 | 83.9% | 77.1% |
| National | 245,360 | 237,426 | 87.2% | 84.4% |

Source: Linkage between National Disability Insurance Agency data and the Australian Immunisation Register. Total NDIS participants data as at 17 January. Australian Immunisation Register data as at 17 January. Includes all participants regardless of residence type.

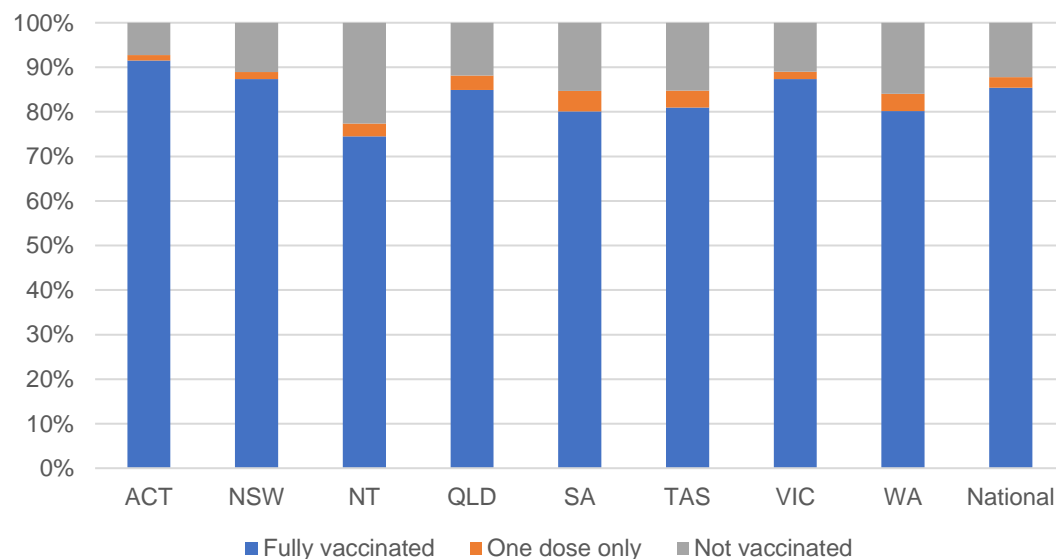
National Disability Insurance Scheme (NDIS) reported vaccinations

Data as at:
19 January 2022
Updated Weekly

Australia's COVID-19
Vaccine Roadmap

| NATIONAL | Total people with at least one dose | People fully vaccinated | Total number of individuals in cohort | % People with at least one dose | % People fully vaccinated |
|--|-------------------------------------|-------------------------|---------------------------------------|---------------------------------|---------------------------|
| NDIS participants living in disability accommodation | 20,035 | 19,537 | 22,800 | 87.90% | 85.70% |

NDIS participants in disability and aged care accommodation



Source: Linkage between National Disability Insurance Agency data and the Australian Immunisation Register. Includes participants residing in disability accommodation only.
Source: Total NDIS participants numbers as at 17 October. Participant data as at 13 December. Australian Immunisation Register data as at 14 December. Worker data as at 12 December.

NDIS workforce vaccinations

| | NDIS workers with at least one dose | NDIS workers fully vaccinated | % NDIS workers with at least one dose | % NDIS workers fully vaccinated |
|--------------|-------------------------------------|-------------------------------|---------------------------------------|---------------------------------|
| NSW | 108,861 | 108,259 | 96.6% | 96.0% |
| VIC | 110,085 | 109,529 | 97.5% | 97.0% |
| QLD | 64,162 | 63,086 | 96.0% | 94.4% |
| WA | 30,982 | 30,035 | 97.5% | 94.6% |
| SA | 33,848 | 32,635 | 98.1% | 94.6% |
| TAS | 10,022 | 9,804 | 98.5% | 96.4% |
| ACT | 3,382 | 3,371 | 99.3% | 99.0% |
| NT | 3,052 | 3,006 | 99.3% | 97.9% |
| TOTAL | 364,394 | 359,725 | 97.1% | 95.8% |

Source: the NDIS Commission has established a requirement for registered NDIS providers who provide intensive disability support services to report on the vaccination status of workers they employ, or otherwise engage, to deliver NDIS-funded supports and services, and who are required to be vaccinated in accordance with in-force state and territory public health orders. The statistics reflect data reported to the NDIS Commission by registered NDIS providers and should be considered indicative and subject to change

Note: Some registered NDIS providers are yet to report on the vaccination status of their workforce. The NDIS Commission is working with those providers around reporting requirements.

Remaining workers not included include those exempt from vaccination requirements, workers whose vaccination status is not yet verified by the provider (such as workers on leave) and provider reporting anomalies.

Residential aged care vaccination rollout

Data as at:
24 Jan 2022

Residential aged care facilities status

100%

Commonwealth facilities visited (2,590 planned sites)

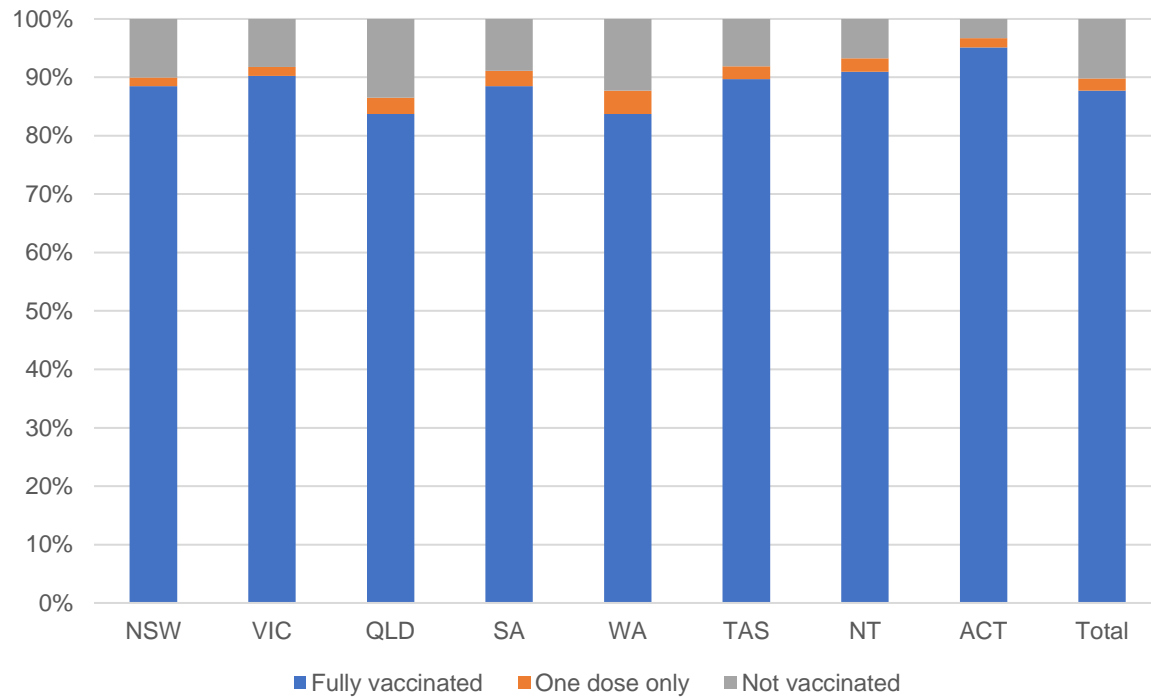
169,775

People fully vaccinated

173,839

People with at least one dose

Aged care resident vaccinations



Aged care worker vaccinations

| Jurisdictions | Total workers with at least one dose | Workers fully vaccinated | % Workers with at least one dose | % Workers fully vaccinated |
|---------------|--------------------------------------|--------------------------|----------------------------------|----------------------------|
| NSW | 79,165 | 79,126 | 99.3% | 99.2% |
| VIC | 71,150 | 71,150 | 99.7% | 99.7% |
| QLD | 48,707 | 48,691 | 99.5% | 99.5% |
| SA | 27,293 | 27,246 | 98.8% | 98.7% |
| WA | 23,834 | 23,757 | 99.9% | 99.6% |
| TAS | 7,583 | 7,568 | 99.4% | 99.2% |
| NT | 835 | 834 | 100.0% | 99.9% |
| ACT | 3,035 | 3,035 | 100.0% | 100.0% |
| Total | 261,602 | 261,407 | 99.5% | 99.4% |

Source: My Aged Care Portal vaccination progress

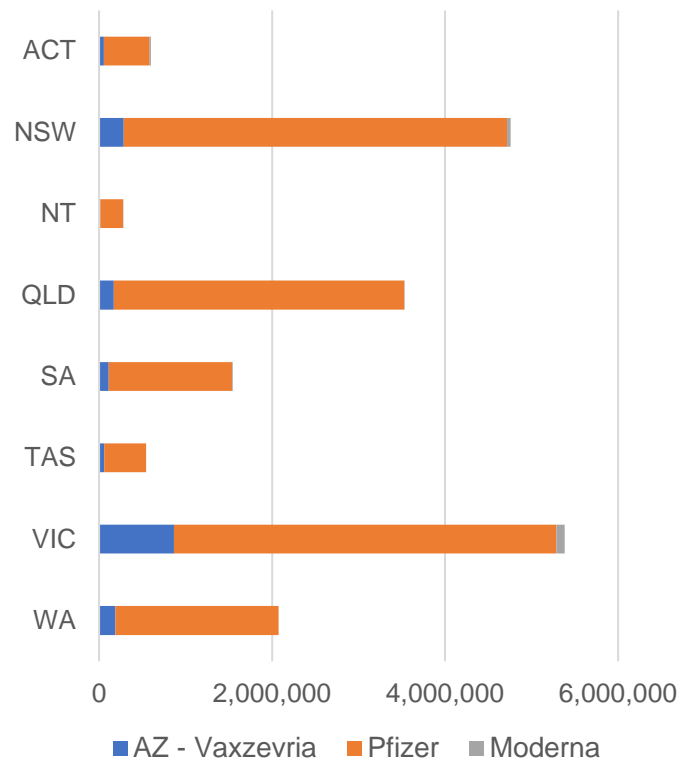
*Status updates are provided by facilities at least once per week. Reporting is updated Monday to Friday to encompass different facility updates being made on different days.

Data is sourced directly from Aged Care Service Providers and is not drawn or closely aligned with data from AIR due to inconsistencies and potential lags in uploading of records.

Data as at:
24 Jan 2022

Jurisdiction administered

Total vaccine doses administered in State and Territory clinics as at 24 January



18,711,827 total vaccine doses administered in State and Territory clinics as at 24 January
 + **77,144** recorded in the last 24 hours
 + **540,289** recorded in the last 7 days

NSW
4,757,383
 (+14,277 daily increase)

VIC
5,384,025
 (+27,268 daily increase)

QLD
3,529,250
 (+6,314 daily increase)

WA
2,074,004
 (+10,813 daily increase)

TAS
544,347
 (+3,044 daily increase)

SA
1,546,573
 (+9,574 daily increase)

ACT
599,467
 (+4,361 daily increase)

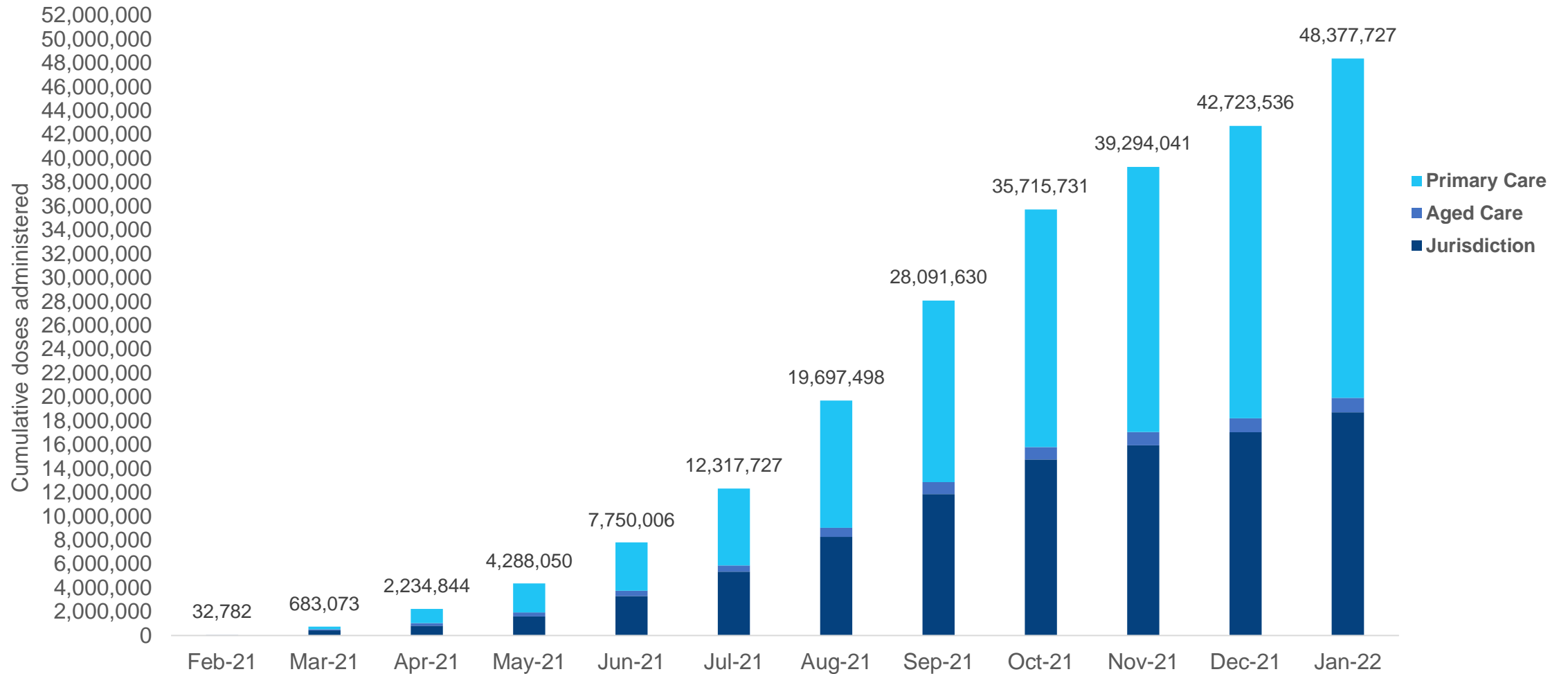
NT
276,778
 (+1,493 daily increase)

*Sourced from the Australian Immunisation Register. Numbers are calculated as difference in daily cumulative reported numbers to allow for historical corrections.

Source: Australian Immunisation Register

Data as at:
24 Jan 2022

Cumulative doses administered by channel



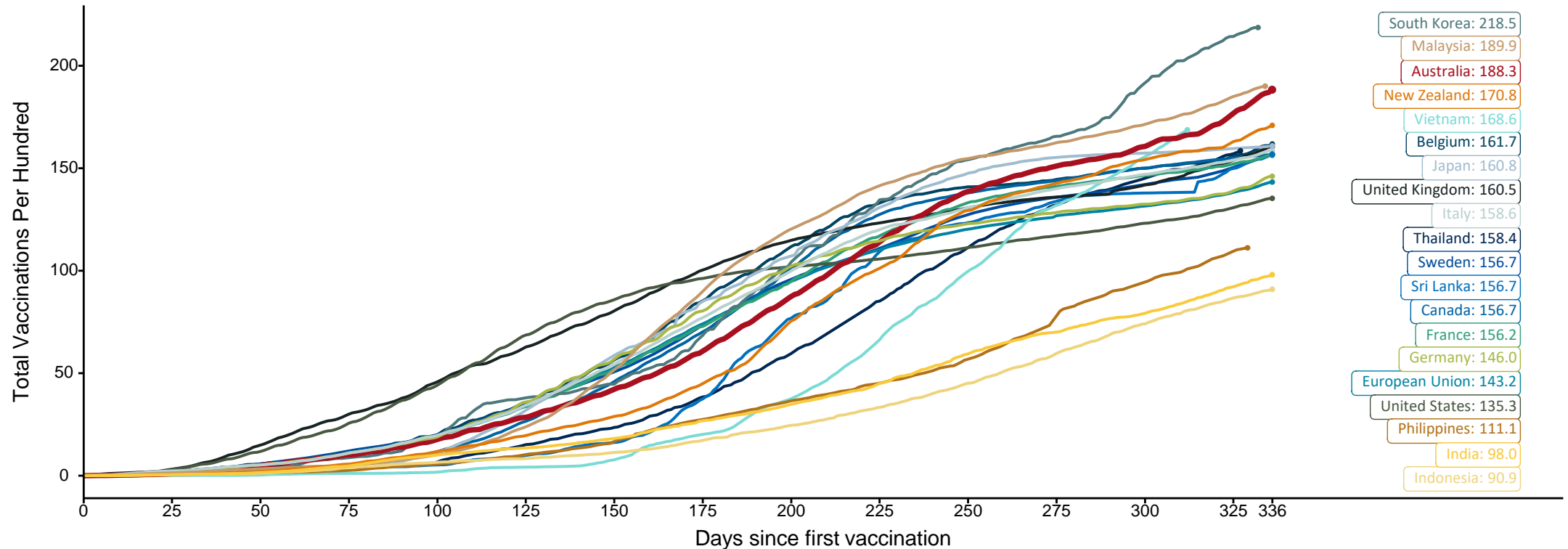
Source: Australian Immunisation Register

Doses at equivalent stages of rollout (Day 336)

Data as at:
24 Jan 2022

The x-axis is truncated at the length of Australia's vaccination program. Countries with intermittent reporting have had their doses per 100 imputed to Australia's current stage of rollout. Israel excluded as it is beyond scale of the graph

Cumulative doses administered (24 Jan): **48,377,727**

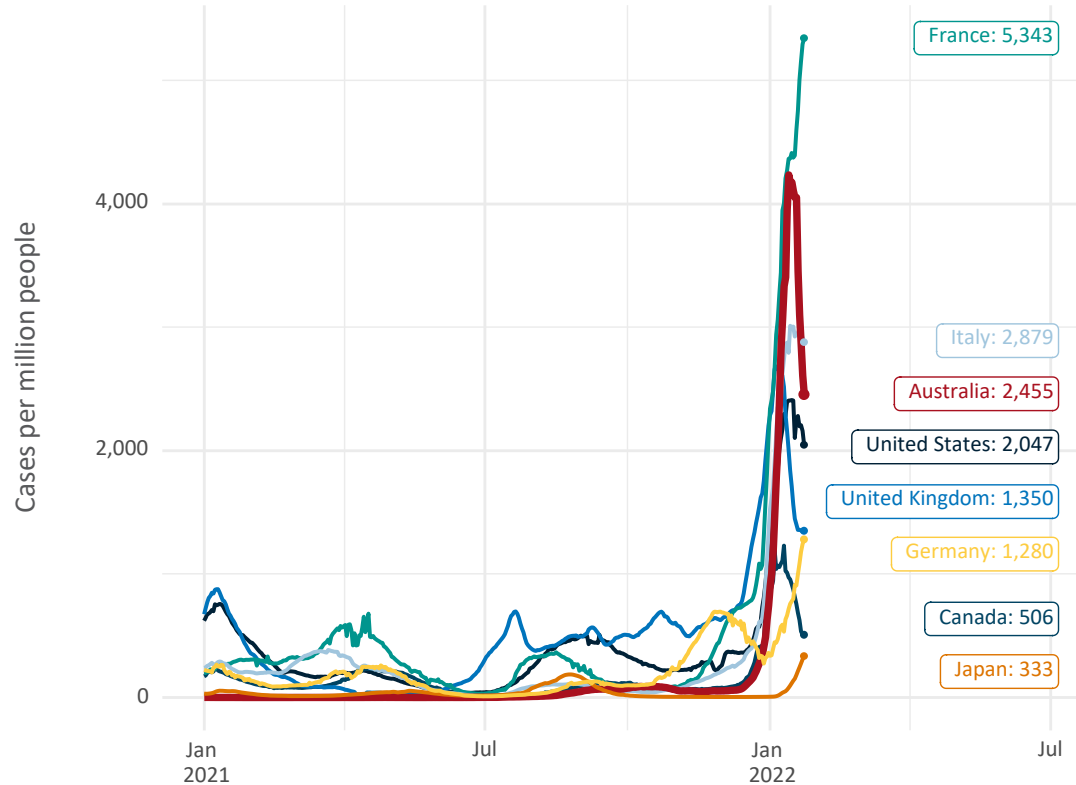


Note: From 15 September 2021, data for Australia includes all doses administered to people 12 and over. Prior to 15 September, data was for 16 and over
 Due to data revisions, Singapore has been removed from the chart
 Source: Department of Health (Australia), Our World in Data (international)
 Latest data: 24 January

Data as at:
24 Jan 2022

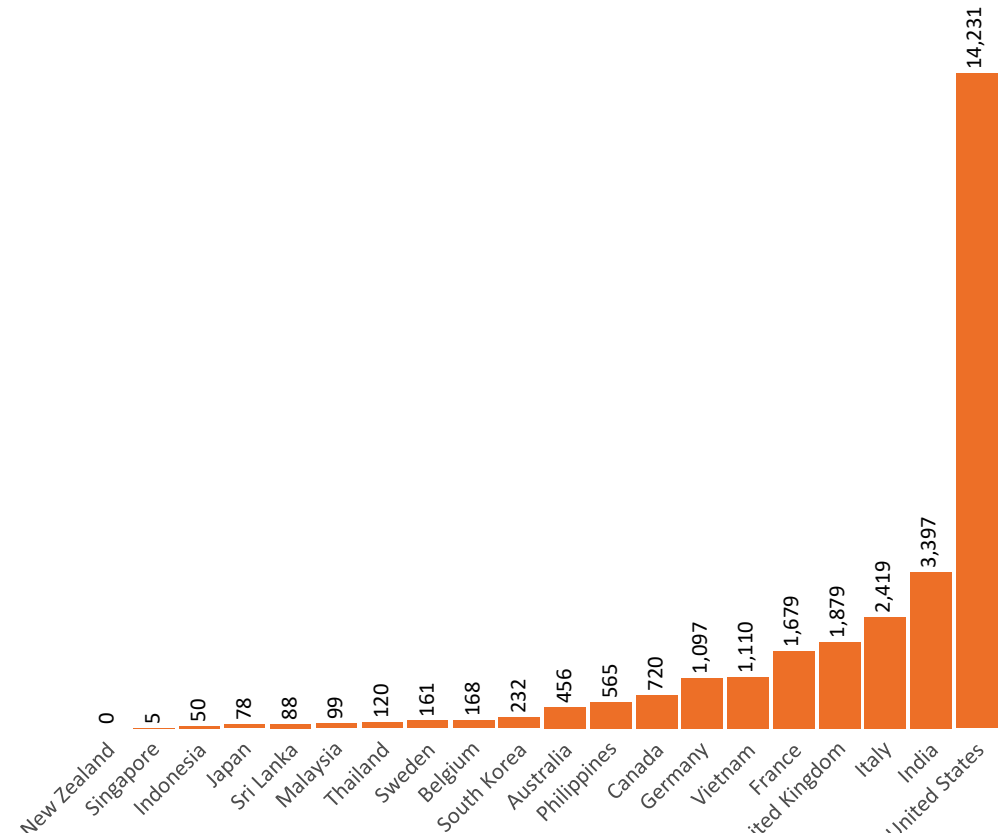
International data – COVID-19

New daily cases per million in 2021, Australia and G7 countries
Smoothed - 7 day average



Source: OWID
Data downloaded: 25 Jan 2022 08:30
Latest data: 23 Jan 2022


COVID-19 deaths in past 7 days - Australia and select countries



Source: OWID
Data downloaded: 25 Jan 2022 08:30
Latest data: 23 Jan 2022

Data as at midnight:
23 Jan 2022
Updated weekly

Pandemic Response Payments



2.38 million
People have received at least one COVID Disaster Payment (including ISP200)

\$13.31 billion
Paid Out as at 23 Jan 2022


6.43 million
Claims granted across three different payments



96%
of Claims Received Digitally



| | |
|---|--|
| COVID Disaster Payment: | 5.89 million claims received - 2.19 million individuals paid a total of \$12.59 billion. |
| \$200 Income Support Payment: | 353,000 claims received - 183,000 individuals paid a total of \$268.91 million. |
| Pandemic Leave Disaster Payment: | 600,000 claims received - 403,000 individuals paid a total of \$451.9 million. |



THREE PAYMENTS AVAILABLE

COVID Disaster Payment
assisting during a lockdown event in a Commonwealth hotspot.

Income Support Payment \$200
for income support recipients who lost at least 8 hours of work.

Pandemic Leave Disaster Payment
for those who have to self-isolate, quarantine or care.

For more information visit:
servicesaustralia.gov.au

COVID-19 DISASTER PAYMENTS

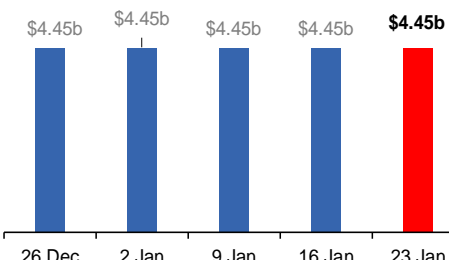
Victoria
Lockdown (#6) from 6 Aug to 28 Oct
Claiming period ended 9 Dec

745,000 people have received at least one COVID Disaster Payment.

\$4.45b paid out as at 23 Jan 2022.

\$9,000 paid in initial and reoccurring payments in the week ending 23 Jan 2022.

Cumulative payments made by State since activation on 8 Jun 2021.



| Date | Cumulative Payments (\$b) |
|--------|---------------------------|
| 26 Dec | \$4.45b |
| 2 Jan | \$4.45b |
| 9 Jan | \$4.45b |
| 16 Jan | \$4.45b |
| 23 Jan | \$4.45b |

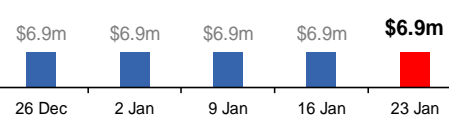
Northern Territory
Lockdown (#3) from 16 Nov to 22 Nov
Claiming period ends 27 Dec

7,500 people have received at least one COVID Disaster Payment.

\$6.9m paid out as at 23 Jan 2022.

\$0 paid in initial payments in the week ending 23 Jan 2022.

Cumulative payments made by Territory since activation on 25 Aug 2021.



| Date | Cumulative Payments (\$m) |
|--------|---------------------------|
| 26 Dec | \$6.9m |
| 2 Jan | \$6.9m |
| 9 Jan | \$6.9m |
| 16 Jan | \$6.9m |
| 23 Jan | \$6.9m |

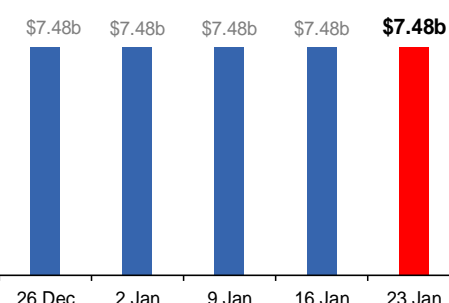
New South Wales
Lockdown from 24 Jun to 10 Oct
Claiming period ended 27 Nov

1.08m people have received at least one COVID Disaster Payment.

\$7.48b paid out as at 23 Jan 2022.

\$11,000 paid in initial and reoccurring payments in the week ending 23 Jan 2022.

Cumulative payments made by State since activation on 1 Jul 2021.



| Date | Cumulative Payments (\$b) |
|--------|---------------------------|
| 26 Dec | \$7.48b |
| 2 Jan | \$7.48b |
| 9 Jan | \$7.48b |
| 16 Jan | \$7.48b |
| 23 Jan | \$7.48b |

Australian Capital Territory
Lockdown from 12 Aug to 14 Oct
Claiming period ended 25 Nov

65,000 people have received at least one COVID Disaster Payment.

\$344.7m paid out as at 23 Jan 2022.

\$1,000 paid in initial and reoccurring payments in the week ending 23 Jan 2022.

Cumulative payments made by Territory since activation on 20 Aug 2021.



| Date | Cumulative Payments (\$m) |
|--------|---------------------------|
| 26 Dec | \$344.7m |
| 2 Jan | \$344.7m |
| 9 Jan | \$344.7m |
| 16 Jan | \$344.7m |
| 23 Jan | \$344.7m |

Data as at midnight:
23 Jan 2022
Updated weekly

Pandemic Response Payments (continued)

COVID-19 DISASTER PAYMENTS

Tasmania

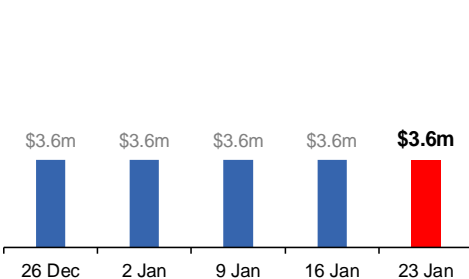
Lockdown from 15 Oct to 18 Oct
Claiming period ended 12 Nov

6,900 people have received at least one COVID Disaster Payment.

\$3.6m paid out as at 23 Jan 2022.

\$0 paid in initial and reoccurring payments in the week ending 23 Jan 2022.

Cumulative payments made by State since activation on 22 Oct 2021.



Queensland

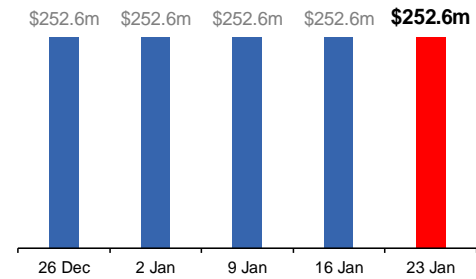
Lockdown from 31 Jul to 11 Aug
Claiming period ended 28 Aug

196,000 people have received at least one COVID Disaster Payment.

\$252.6m paid out as at 23 Jan 2022.

\$0 paid in initial and reoccurring payments in the week ending 23 Jan 2022.

Cumulative payments made by State since activation on 7 Aug 2021.



South Australia

Lockdown from 21 to 27 Jul
Claiming period ended 17 Aug

86,000 people have received at least one COVID Disaster Payment.

\$48.2m paid out as at 23 Jan 2022.

\$0 paid in initial and reoccurring payments in the week ending 23 Jan 2022.

Cumulative payments made by State since activation on 28 Jul 2021.

