



Australian Government
Operation COVID Shield

COVID-19 Vaccine Roll-out

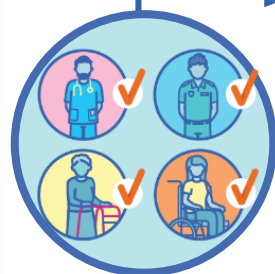
24 January 2022

Data as at:
23 Jan 2022

Total vaccine doses



48,055,260 total vaccine
doses administered nationally as at 23 January
+121,177 recorded in the last 24 hours



19,662,674

people have had at least one
dose

>95%

of people over the age of 16
have had at least one dose



19,168,840

people are fully vaccinated

93.0%

of people over the age of 16 are
fully vaccinated



6,546,383

people over the age of 18
who have received more
than two doses

NSW
15,293,210
(+25,350 daily
increase)

VIC
12,654,589
(+39,994 daily
increase)

QLD
9,293,679
(+19,348 daily
increase)

WA
4,813,929
(+15,171 daily
increase)

TAS
1,063,963
(+5,305 daily
increase)

SA
3,291,663
(+10,751 daily
increase)

ACT
1,174,449
(+4,331 daily
increase)

NT
469,778
(+927 daily
increase)

*Administration state breakdown indicates state in which a vaccine was administered

**Overall dose count includes instances of more than two doses per person in a small number of cases.

Source: Australian Immunisation Register

Booster Vaccinations

Data as at:
23 Jan 2022



6,546,383 total people over the age of 18 years old
who have received more than two doses nationally

+86,995 people who have received more than two doses
nationally in the last 24 hours

NSW
2,158,985
(19,674 daily
increase)

VIC
1,710,476
(31,810 daily
increase)

QLD
1,211,049
(12,845 daily
increase)

WA
618,526
(9,646 daily
increase)

TAS
143,679
(1,942 daily
increase)

SA
475,926
(7,187 daily
increase)

ACT
135,827
(2,471 daily
increase)

NT
53,829
(584 daily
increase)

38,086

doses administered to persons
residing in other territories or with
missing residential information

Source: Australian Immunisation Register

Vaccinations by residential location

Australia's COVID-19 Vaccine Roadmap

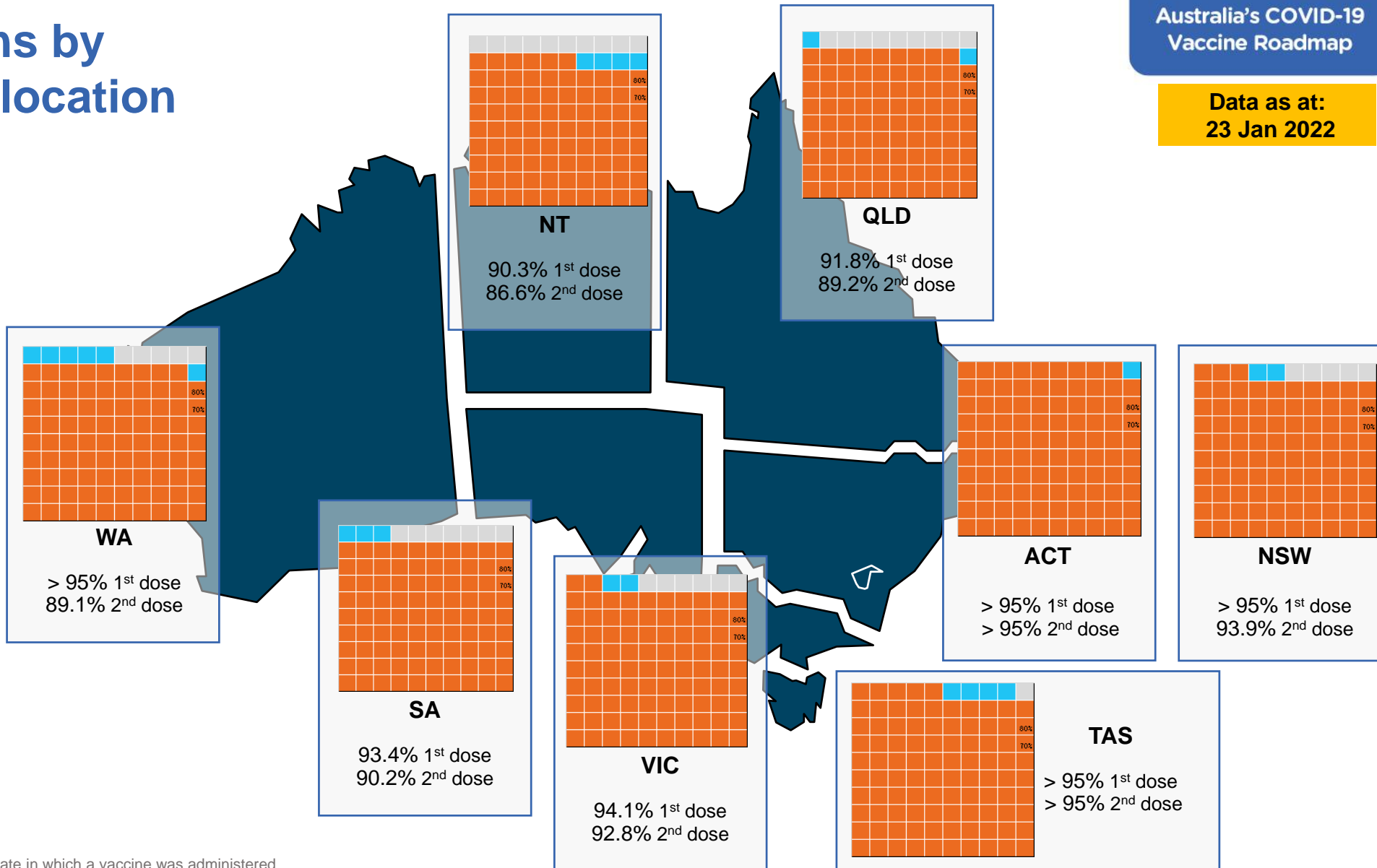
Data as at:
23 Jan 2022

First doses

Age	Today	4 weeks ago	8 weeks ago
16+	>95%	94.4%	92.7%
50+	>95%	>95%	>95%
70+	>95%	>95%	>95%

Fully vaccinated

Age	Today	4 weeks ago	8 weeks ago
16+	93.0%	91.4%	87.3%
50+	>95%	>95%	94.4%
70+	>95%	>95%	>95%



*Residential state may differ from the state in which a vaccine was administered

Commonwealth and Jurisdiction vaccine doses administered

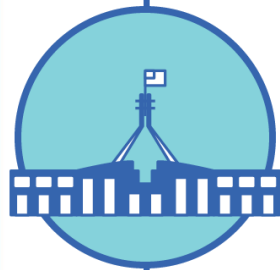
Data as at:
23 Jan 2022



48,055,260 total vaccine
doses administered nationally as at 23 January
+ 121,177 recorded in the last 24 hours



18,634,683
doses administered by state
and territory facilities
+ 63,992
recorded in the last 24 hours



29,420,577
doses administered by
commonwealth facilities
+ 57,185
recorded in the last 24 hours

28,216,701 total vaccine doses
administered in primary care settings
1,203,876 total vaccine doses
administered in aged care and disability
settings

NSW	Jurisdictions	Commonwealth
Cumulative	4,743,106	10,550,104
Daily increase	9,529	15,821

VIC	Jurisdictions	Commonwealth
Cumulative	5,356,757	7,297,832
Daily increase	22,390	17,604

QLD	Jurisdictions	Commonwealth
Cumulative	3,522,936	5,770,743
Daily increase	8,953	10,395

WA	Jurisdictions	Commonwealth
Cumulative	2,063,191	2,750,738
Daily increase	6,232	8,939

TAS	Jurisdictions	Commonwealth
Cumulative	541,303	522,660
Daily increase	4,525	780

SA	Jurisdictions	Commonwealth
Cumulative	1,536,999	1,754,664
Daily increase	8,479	2,272

ACT	Jurisdictions	Commonwealth
Cumulative	595,106	579,343
Daily increase	2,971	1,360

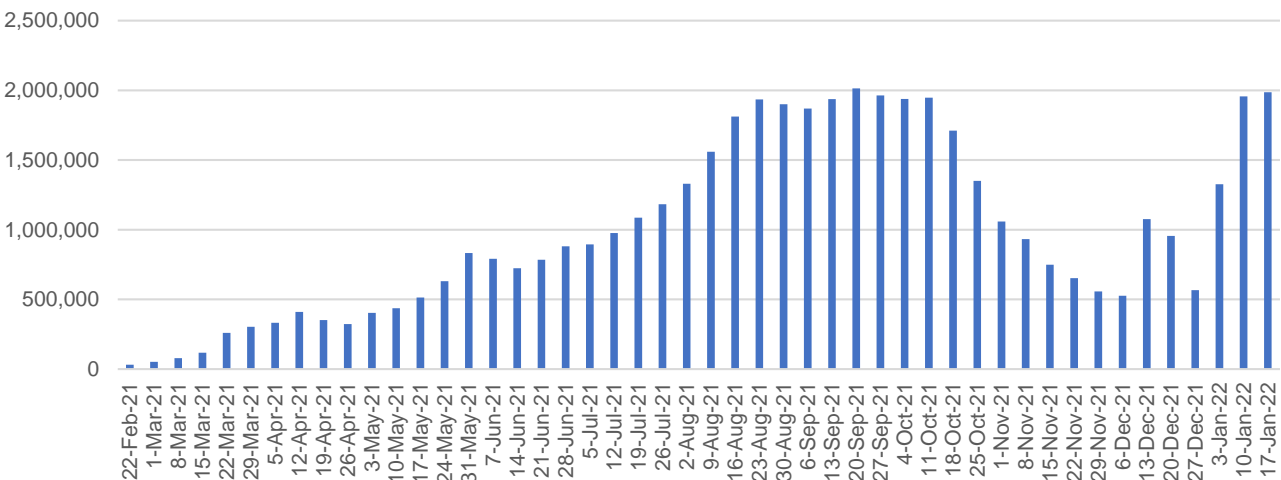
NT	Jurisdictions	Commonwealth
Cumulative	275,285	194,493
Daily increase	913	14

Vaccine milestone charts

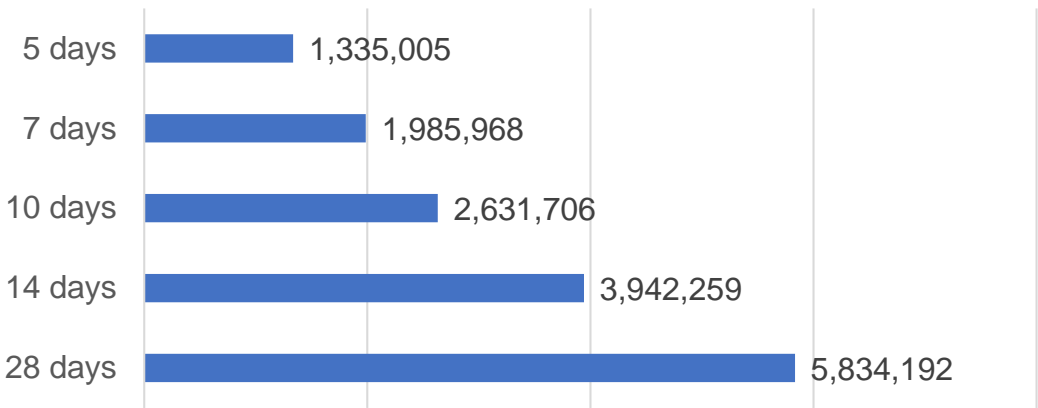
Data as at:
23 Jan 2022

Australia's COVID-19
Vaccine Roadmap

Doses Administered by Week

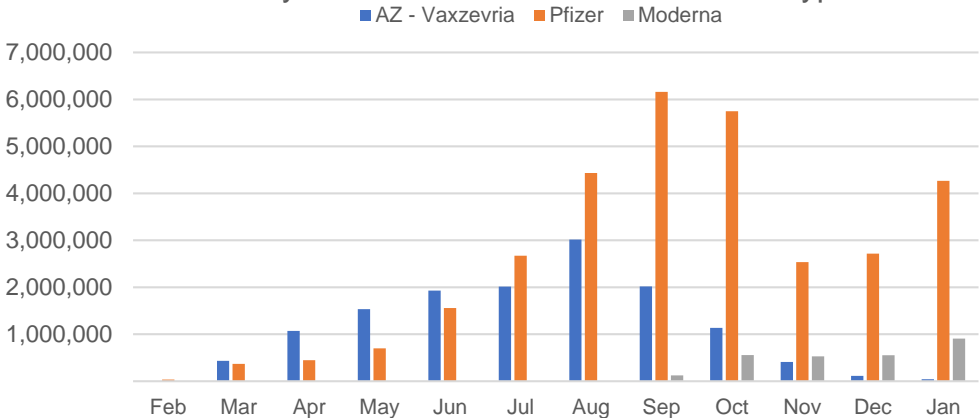


Doses Reported

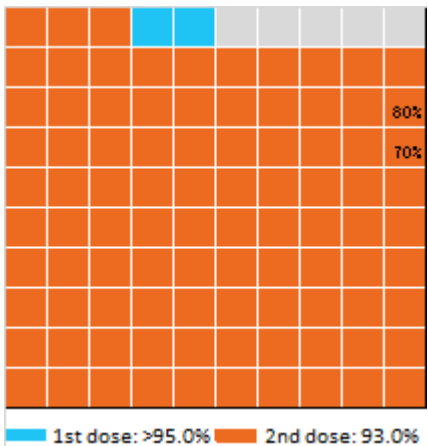


*Sourced from the Australian Immunisation Register.

Doses by administration month and vaccine type



Eligible population percentage coverage



*Each square represents 1% of the national population.
Squares are filled as milestones are achieved.

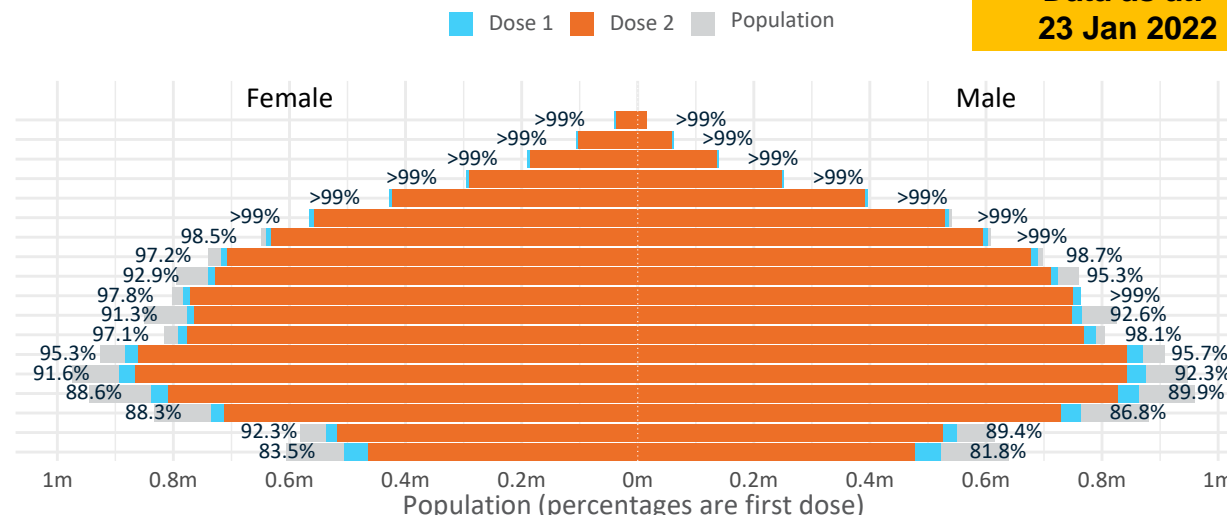
Data as at:
23 Jan 2022

Doses by age and sex

First and second doses by age and sex

	16+	50+	12-15	5-11
Dose 1	95.36% (19,662,674 doses / 20,619,959 people)	>99% (8,697,844 doses / 8,749,703 people)	82.64% (1,027,986 doses / 1,243,990 people)	29.09% (662,297 doses / 2,276,638 people)
Dose 2	92.96% (19,168,840 doses / 20,619,959 people)	97.73% (8,551,116 doses / 8,749,703 people)	75.73% (942,015 doses / 1,243,990 people)	

Age	Dose 1	Dose 2
95+	56,214 (>99%)	52,486 (>99%)
90-94	168,107 (>99%)	161,150 (>99%)
85-89	331,233 (>99%)	321,791 (>99%)
80-84	548,028 (>99%)	537,727 (>99%)
75-79	825,779 (>99%)	814,049 (>99%)
70-74	1,102,253 (>99%)	1,087,392 (98.4%)
65-69	1,244,446 (98.9%)	1,226,367 (97.5%)
60-64	1,408,560 (98.0%)	1,386,857 (96.5%)
55-59	1,464,617 (94.1%)	1,441,497 (92.7%)
50-54	1,548,607 (99.0%)	1,521,800 (97.3%)
45-49	1,542,856 (92.0%)	1,512,403 (90.2%)
40-44	1,584,237 (97.8%)	1,546,706 (95.5%)
35-39	1,756,986 (95.7%)	1,707,380 (93.0%)
30-34	1,776,985 (92.4%)	1,715,242 (89.2%)
25-29	1,712,257 (89.8%)	1,645,200 (86.3%)
20-24	1,504,892 (87.9%)	1,447,380 (84.5%)
16-19	1,086,617 (90.9%)	1,043,413 (87.3%)
12-15	1,027,986 (82.6%)	942,015 (75.7%)

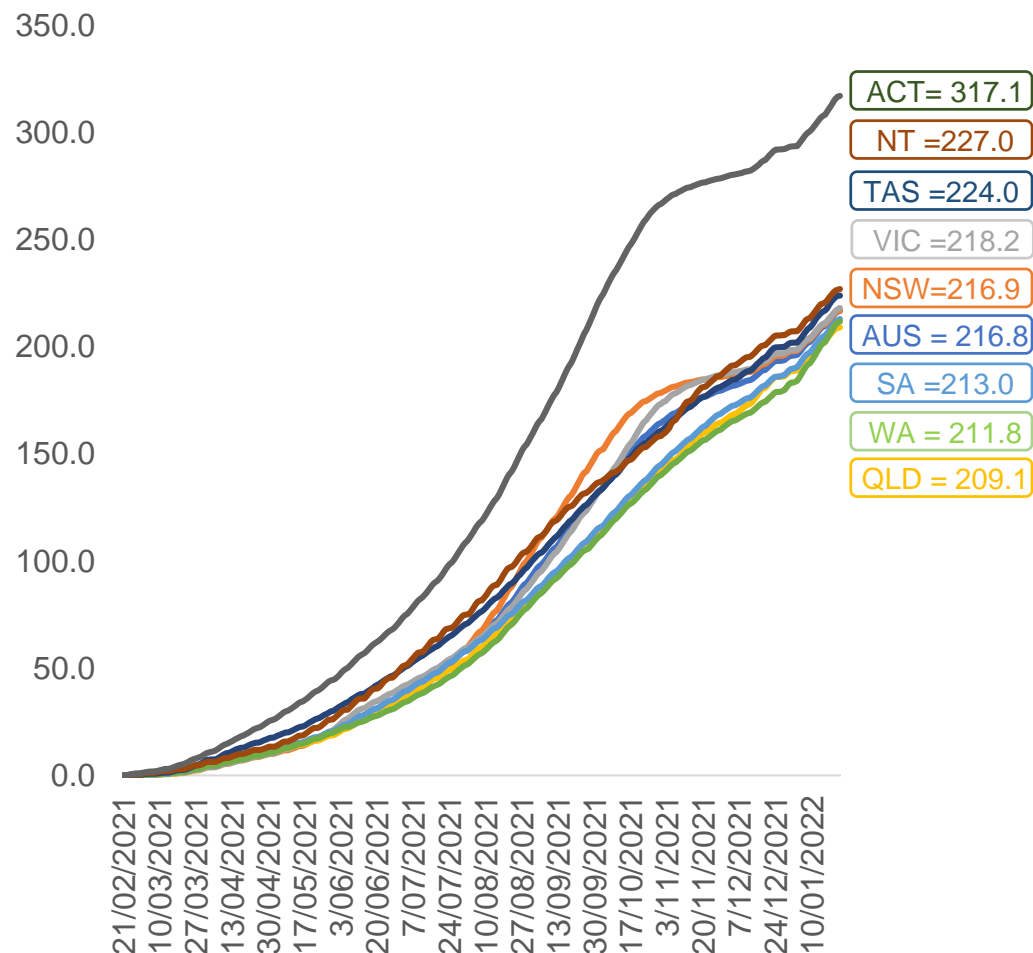


	AUS	ACT	NSW	NT	QLD	SA	TAS	VIC	WA
16 and over - dose 1	19,662,674	348,272	6,259,017	172,155	3,776,032	1,345,695	436,116	5,090,477	2,012,273
16 and over - dose 2	19,168,840	343,543	6,165,649	164,991	3,667,583	1,299,145	421,631	5,018,731	1,885,066
16 and over - population	20,619,959*	344,037	6,565,651	190,571	4,112,707	1,440,400	440,172	5,407,574	2,114,978
16 and over % with dose 1	95.36%	>99%	95.33%	90.34%	91.81%	93.43%	>99%	94.14%	95.14%
16 and over % with dose 2	92.96%	>99%	93.91%	86.58%	89.18%	90.19%	95.79%	92.81%	89.13%
5 to 11 - dose 1	662,297	20,064	205,788	7,063	127,038	46,828	18,332	181,835	52,022
5 to 11 - population	2,276,638	39,789	716,460	24,750	478,731	148,816	45,033	578,499	244,154
5 to 11 % with dose 1	29.09%	50.43%	28.72%	28.54%	26.54%	31.47%	40.71%	31.43%	21.31%
12 to 15 - dose 1	1,027,986	19,873	322,779	10,559	201,810	66,201	21,960	273,363	102,677
12 to 15 - dose 2	942,015	19,147	305,757	9,111	179,977	58,966	19,759	260,242	81,751
12 to 15 - population	1,243,990	19,693	390,330	13,060	270,146	82,747	26,308	308,611	132,869
12 to 15 % with dose 1	82.64%	>99%	82.69%	80.85%	74.70%	80.00%	83.47%	88.58%	77.28%
12 to 15 % with dose 2	75.73%	97.23%	78.33%	69.76%	66.62%	71.26%	75.11%	84.33%	61.53%

*National population will not equal sum of listed jurisdictions due to a small number of people counted in national population residing in some 'other' territories. Sum of state doses will not add to national total as some records are unable to be geocoded to a State or Territory.
Doses sourced from Australian Immunisation Register, population from ABS ERP June 2020

Vaccinations by location

Cumulative total doses administered vs eligible state populations*

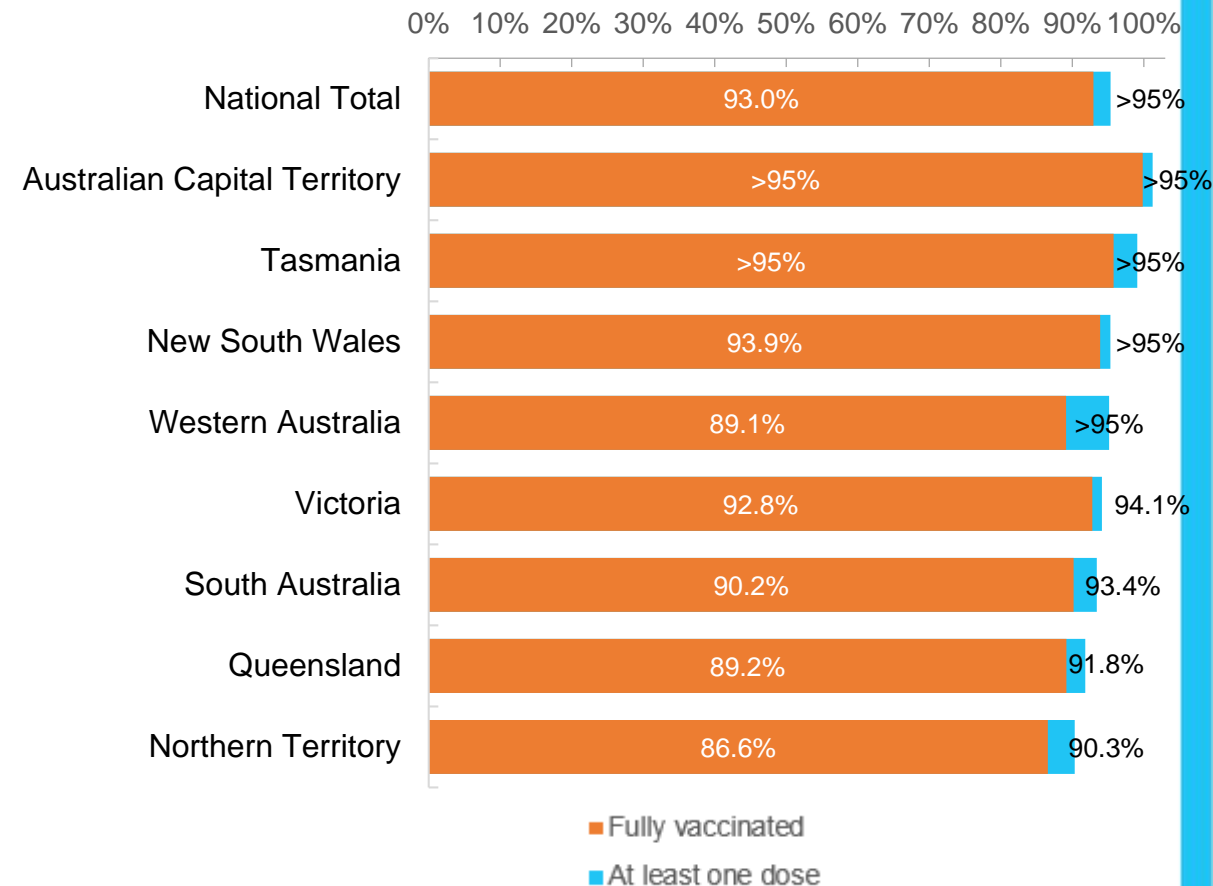


*Not an indication of percentage vaccinated, numbers will exceed 100 due to multiple doses required per person of the population. All doses are included for those aged 12 and above, and are based on vaccination provider location.

Data as at:
23 Jan 2022

Australia's COVID-19
Vaccine Roadmap

First and Second Doses by residential location



Aboriginal and Torres Strait Islander peoples

Number of people vaccinated

Data as at:
18 Jan 2022
Updated weekly

Australia's COVID-19
Vaccine Roadmap



422,837

people over the age of 16
have had at least one dose

80.7%

of people over the age of 16
have had at least one dose



389,157

people over the age of 16
are fully vaccinated

74.3%

of people over the age of 16 are
fully vaccinated



**44,618
(62.6%)**

people aged 12-15 years
have had at least one dose

173 Aboriginal community controlled health services (ACCHS)

0#	50	27	41	12	3	21	19
ACT	NSW	NT	QLD	SA	TAS	VIC	WA

Medicare Address State ^{##}	Individuals Dose 1	Individuals Dose 1 %	Individuals Dose 2	Individuals Dose 2 %
Australian Capital Territory	4,912	90.9%	4,767	88.2%
New South Wales	136,460	86.3%	132,696	84.0%
Northern Territory	40,694	86.3%	36,609	77.6%
Queensland	111,437	78.0%	101,243	70.9%
South Australia	19,123	75.9%	16,982	67.4%
Tasmania	14,457	86.5%	13,652	81.7%
Victoria	35,378	88.8%	34,339	86.2%
Western Australia	45,410	71.6%	36,609	57.8%
Unknown/Other Territories	14,966	59.0%	12,260	48.4%
Totals	422,837	80.7%	389,157	74.3%

Source: Australian Immunisation Register

*Identifying as Aboriginal and Torres Strait Islander is optional and the estimated population may be under reported.

**Includes all Aboriginal and Torres Strait Islander peoples who have received a vaccination, not limited to those administered in an ACCHS setting

#ACCHS in the ACT are currently operating as a Commonwealth Vaccine Clinics so not included to avoid double counting

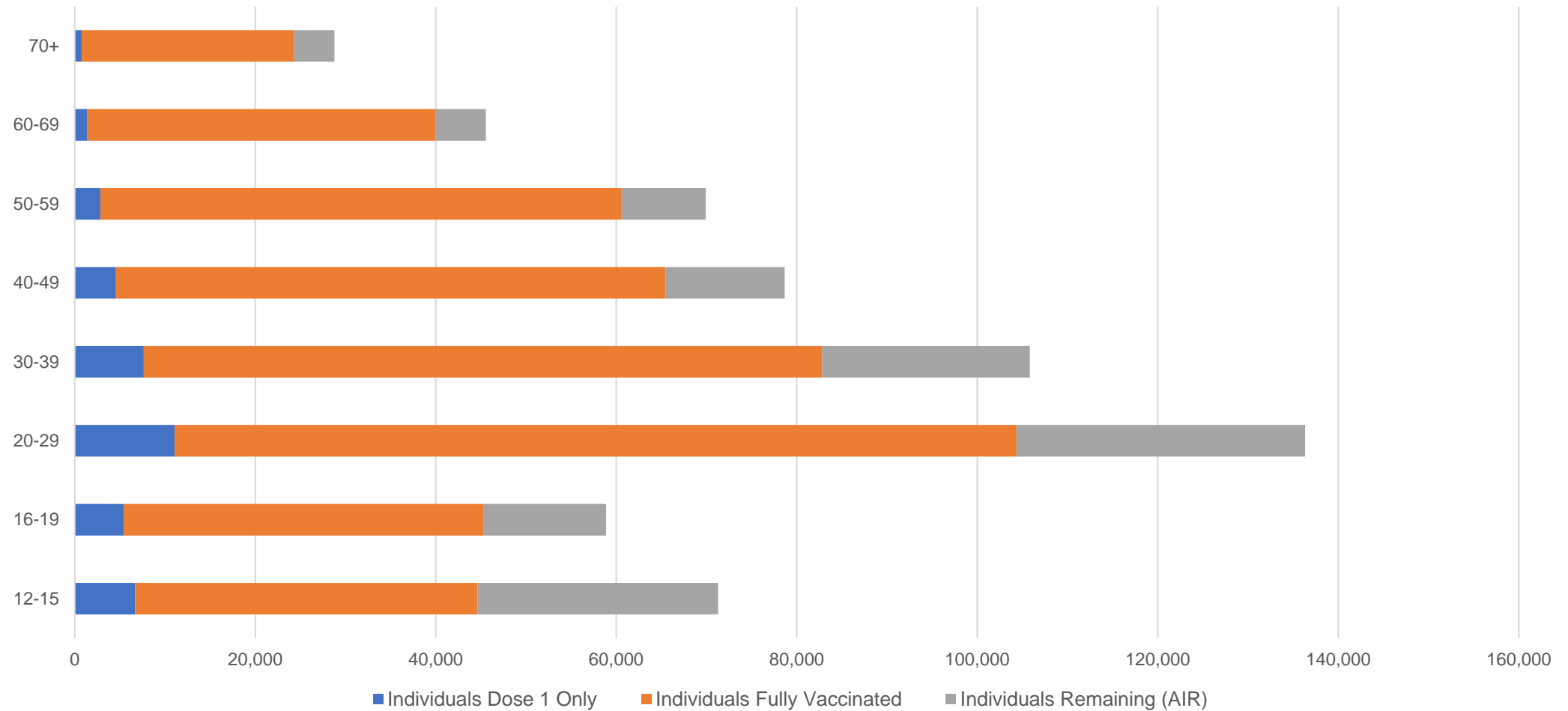
##The above table includes all identified Aboriginal and Torres Strait Islander people who are aged 16 and above by their state of residence.

Aboriginal and Torres Strait Islander peoples

Number of people vaccinated by age

Data as at:
18 Jan 2022
Updated weekly

Australia's COVID-19
Vaccine Roadmap



Source: Australian Immunisation Register

Commonwealth primary care

Data as at:
23 Jan 2022

Australia's COVID-19
Vaccine Roadmap



Primary care vaccine administration sites

5,714	128	174	3,494
GPs	CVCs	ACCHS	Pharmacies



28,216,701 total vaccine doses administered
primary care settings as at 23 January
+ 56,754 recorded in the last 24 hours

Primary care vaccinations by provider type

	Doses administered	Daily increase	7 day increase
General Practice* includes other Commonwealth	23,726,533	42,724	994,575
Pharmacy	4,490,168	14,030	434,930

NSW
10,023,898
(+15,808 daily increase)

VIC
7,022,151
(+17,202 daily increase)

QLD
5,512,687
(+9,415 daily increase)

WA
2,638,453
(+8,770 daily increase)

TAS
505,336
(+774 daily increase)

SA
1,681,021
(+2,282 daily increase)

ACT
447,510
(+1,226 daily increase)

NT
174,296
(+28 daily increase)

211,349

doses administered to persons
residing in other territories or with
missing residential information

*General practice includes Commonwealth Vaccination Clinics, Aboriginal Community Health Centres, Royal Flying Doctor Service and other Commonwealth vaccination facilities

Source: Australian Immunisation Register

Data as at:
23 Jan 2022

Commonwealth aged care and disability doses administered



1,203,876 (+ 431 last 24 hours)

Total vaccine doses administered in aged care and disability facilities as at 23 January

Number of doses administered as part of the Commonwealth aged and disability care rollout

NSW
544,738
(+6 daily increase)

VIC
225,541
(+150 daily increase)

QLD
188,730
(+34 daily increase)

WA
90,730
(+148 daily increase)

TAS
21,475
(-2# daily increase)

SA
80,056
(+2 daily increase)

ACT
15,811
(+35 daily increase)

NT
6,901
(+16 daily increase)

29,894

doses administered to persons
residing in other territories or with
missing residential information

*Sourced from the Australian Immunisation Register. Includes all persons vaccinated at participating residential aged care, disability and related industry settings.

**State level breakdown indicates the residential location and may not align to the state in which the vaccination occurred.

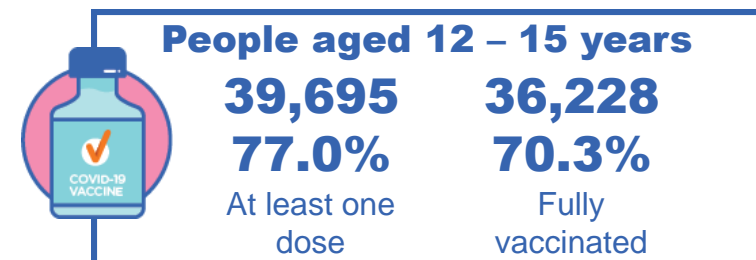
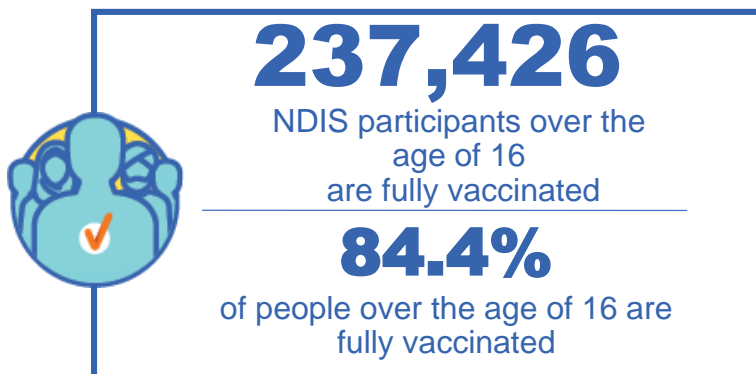
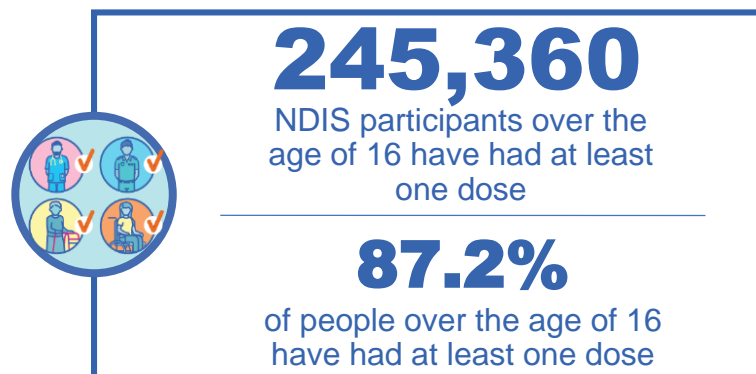
Numbers are calculated as difference in daily cumulative reported numbers to allow for historical corrections in all data sources. This can occasionally result in negative numbers, such as for TAS, where historical details about doses have been updated.

Source: Australian Immunisation Register

National Disability Insurance Scheme (NDIS) reported vaccinations

Data as at:
19 January 2022
Updated weekly

Australia's COVID-19
Vaccine Roadmap



NDIS participant vaccinations

	People aged 16+ with at least one dose	People aged 16+ fully vaccinated	% People aged 16+ with at least one dose	% People aged 16+ fully vaccinated
ACT	4,732	4,657	90.0%	88.6%
NSW	76,734	75,345	88.4%	86.8%
NT	2,113	1,991	78.1%	73.6%
QLD	47,795	45,863	86.0%	82.5%
SA	19,860	18,907	84.7%	80.6%
TAS	6,111	5,810	86.8%	82.5%
VIC	65,972	64,584	88.9%	87.1%
WA	22,043	20,269	83.9%	77.1%
National	245,360	237,426	87.2%	84.4%

Source: Linkage between National Disability Insurance Agency data and the Australian Immunisation Register. Total NDIS participants data as at 17 January. Australian Immunisation Register data as at 17 January. Includes all participants regardless of residence type.

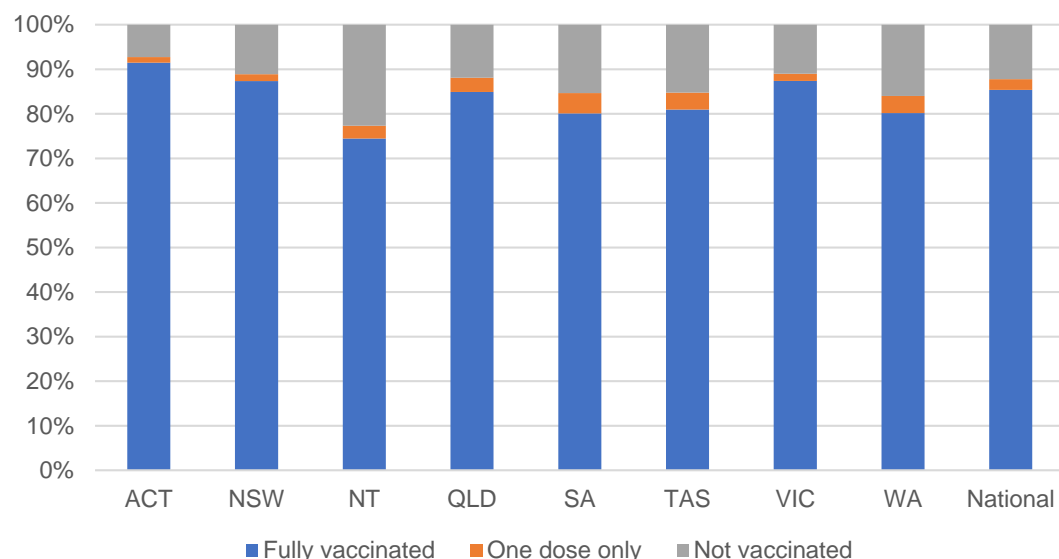
National Disability Insurance Scheme (NDIS) reported vaccinations

Data as at:
19 January 2022
Updated Weekly

Australia's COVID-19
Vaccine Roadmap

NATIONAL	Total people with at least one dose	People fully vaccinated	Total number of individuals in cohort	% People with at least one dose	% People fully vaccinated
NDIS participants living in disability accommodation	20,035	19,537	22,800	87.90%	85.70%

NDIS participants in disability and aged care accommodation



Source: Linkage between National Disability Insurance Agency data and the Australian Immunisation Register. Includes participants residing in disability accommodation only.
Source: Total NDIS participants numbers as at 17 October. Participant data as at 13 December. Australian Immunisation Register data as at 14 December. Worker data as at 12 December.

NDIS workforce vaccinations

	NDIS workers with at least one dose	NDIS workers fully vaccinated	% NDIS workers with at least one dose	% NDIS workers fully vaccinated
NSW	108,861	108,259	96.6%	96.0%
VIC	110,085	109,529	97.5%	97.0%
QLD	64,162	63,086	96.0%	94.4%
WA	30,982	30,035	97.5%	94.6%
SA	33,848	32,635	98.1%	94.6%
TAS	10,022	9,804	98.5%	96.4%
ACT	3,382	3,371	99.3%	99.0%
NT	3,052	3,006	99.3%	97.9%
TOTAL	364,394	359,725	97.1%	95.8%

Source: the NDIS Commission has established a requirement for registered NDIS providers who provide intensive disability support services to report on the vaccination status of workers they employ, or otherwise engage, to deliver NDIS-funded supports and services, and who are required to be vaccinated in accordance with in-force state and territory public health orders. The statistics reflect data reported to the NDIS Commission by registered NDIS providers and should be considered indicative and subject to change

Note: Some registered NDIS providers are yet to report on the vaccination status of their workforce. The NDIS Commission is working with those providers around reporting requirements.

Remaining workers not included include those exempt from vaccination requirements, workers whose vaccination status is not yet verified by the provider (such as workers on leave) and provider reporting anomalies.

Residential aged care vaccination rollout

Residential aged care facilities status

100%

Commonwealth facilities visited (2,590 planned sites)

169,654

People fully vaccinated

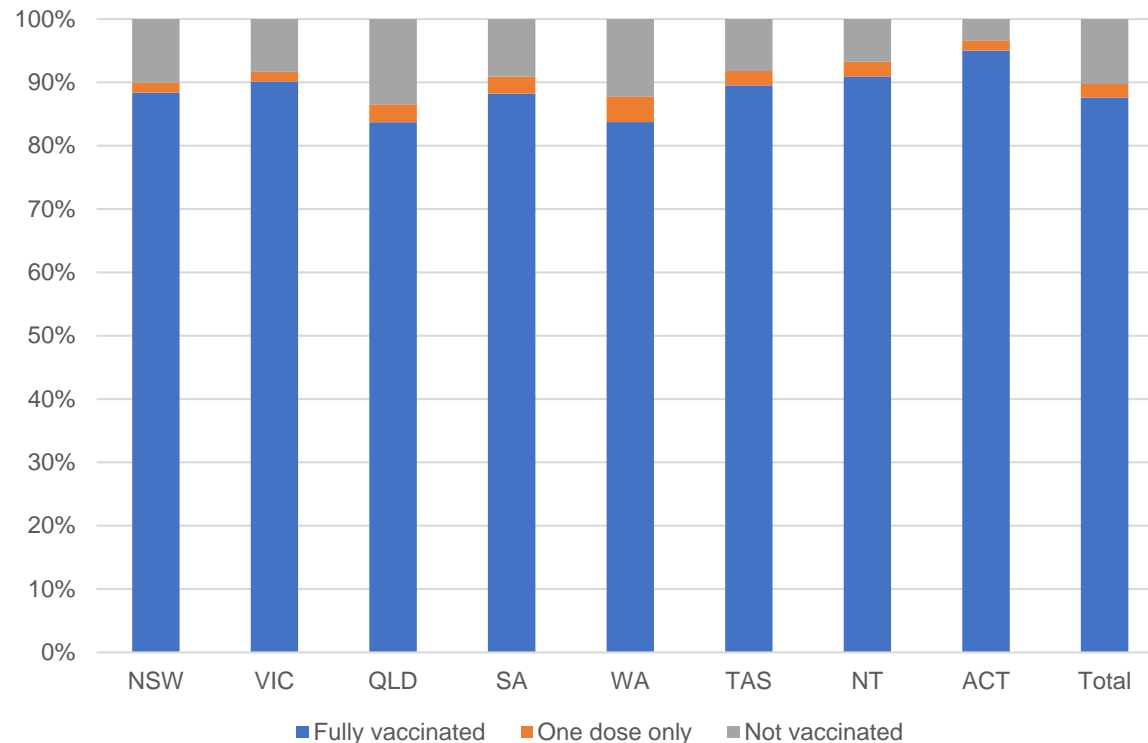
173,783

People with at least one dose

Australia's COVID-19 Vaccine Roadmap

Data as at:
23 Jan 2022

Aged care resident vaccinations



Aged care worker vaccinations

Jurisdictions	Total workers with at least one dose	Workers fully vaccinated	% Workers with at least one dose	% Workers fully vaccinated
NSW	78,578	78,539	98.6%	98.5%
VIC	71,043	71,043	99.5%	99.5%
QLD	48,713	48,697	99.5%	99.5%
SA	27,308	27,259	98.8%	98.7%
WA	23,832	23,755	99.9%	99.6%
TAS	7,558	7,543	99.4%	99.2%
NT	835	834	100.0%	99.9%
ACT	2,912	2,912	95.9%	95.9%
Total	260,779	260,582	99.2%	99.1%

Source: My Aged Care Portal vaccination progress

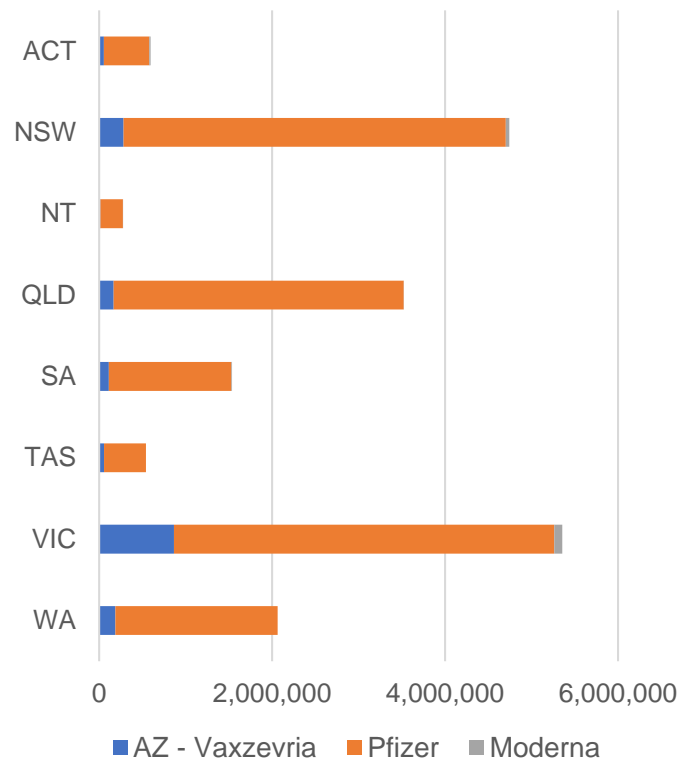
*Status updates are provided by facilities at least once per week. Reporting is updated Monday to Friday to encompass different facility updates being made on different days.

Data is sourced directly from Aged Care Service Providers and is not drawn or closely aligned with data from AIR due to inconsistencies and potential lags in uploading of records.

Data as at:
23 Jan 2022

Jurisdiction administered

Total vaccine doses administered in State and Territory clinics as at 23 January



18,634,683 total vaccine doses administered
in State and Territory clinics as at 23 January
+ **63,992** recorded in the last 24 hours
+ **537,603** recorded in the last 7 days

NSW
4,743,106
(+9,529 daily
increase)

VIC
5,356,757
(+22,390 daily
increase)

QLD
3,522,936
(+8,953 daily
increase)

WA
2,063,191
(+6,232 daily
increase)

TAS
541,303
(+4,525 daily
increase)

SA
1,536,999
(+8,479 daily
increase)

ACT
595,106
(+2,971 daily
increase)

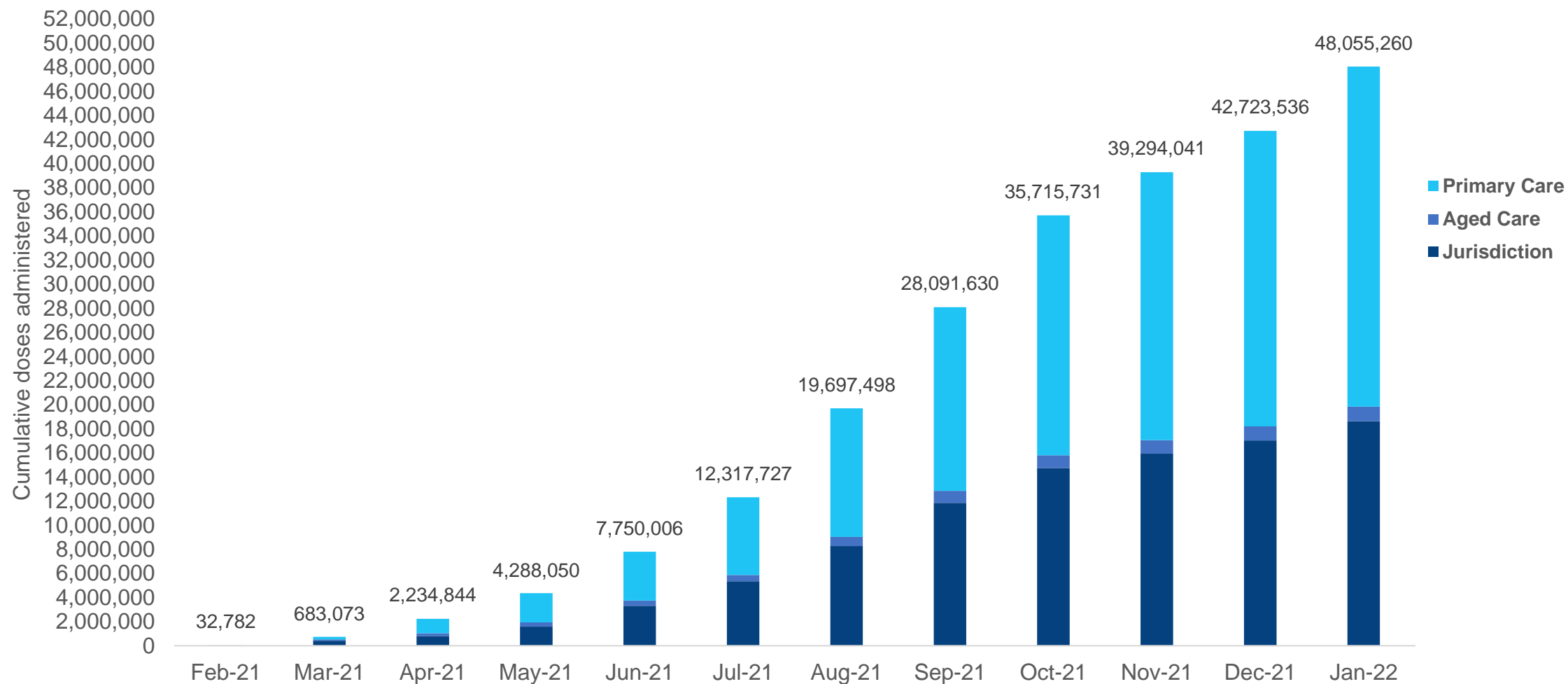
NT
275,285
(+913 daily
increase)

*Sourced from the Australian Immunisation Register. Numbers are calculated as difference in daily cumulative reported numbers to allow for historical corrections.

Source: Australian Immunisation Register

Cumulative doses administered by channel

Data as at:
23 Jan 2022



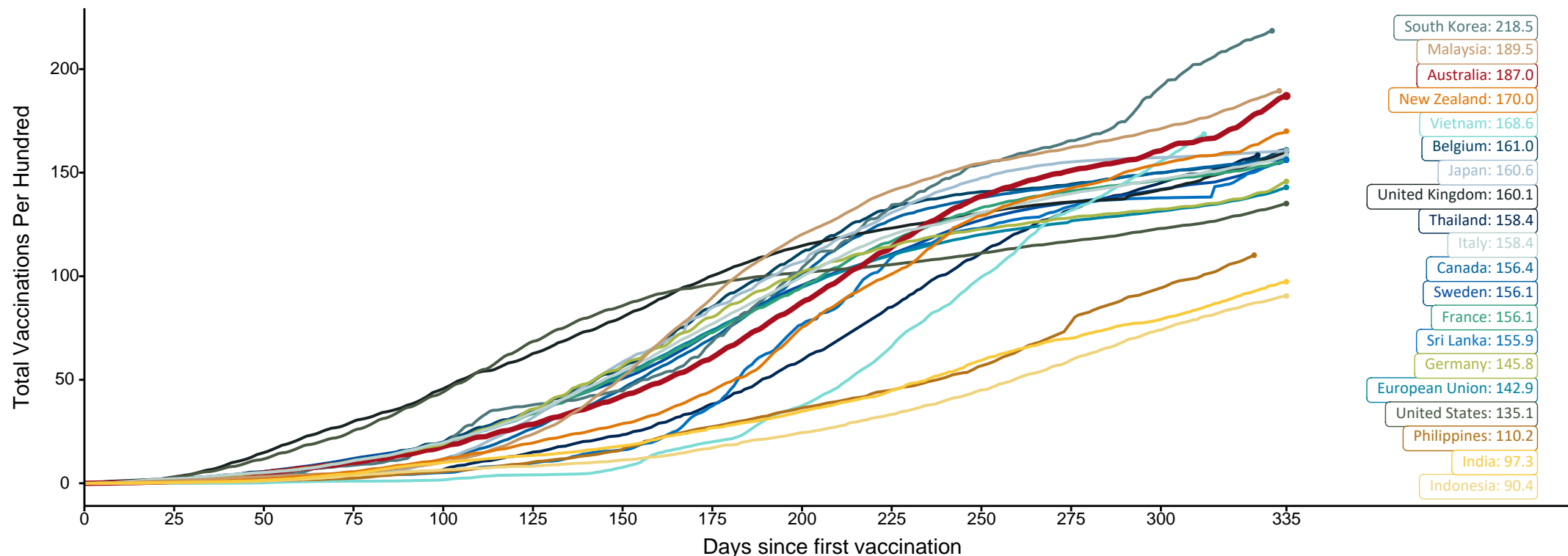
Source: Australian Immunisation Register

Doses at equivalent stages of rollout (Day 335)

Data as at:
23 Jan 2022

The x-axis is truncated at the length of Australia's vaccination program. Countries with intermittent reporting have had their doses per 100 imputed to Australia's current stage of rollout. Israel excluded as it is beyond scale of the graph

Cumulative doses administered (23 Jan): **48,055,260**



Note: From 15 September 2021, data for Australia includes all doses administered to people 12 and over. Prior to 15 September, data was for 16 and over

Due to data revisions, Singapore has been removed from the chart

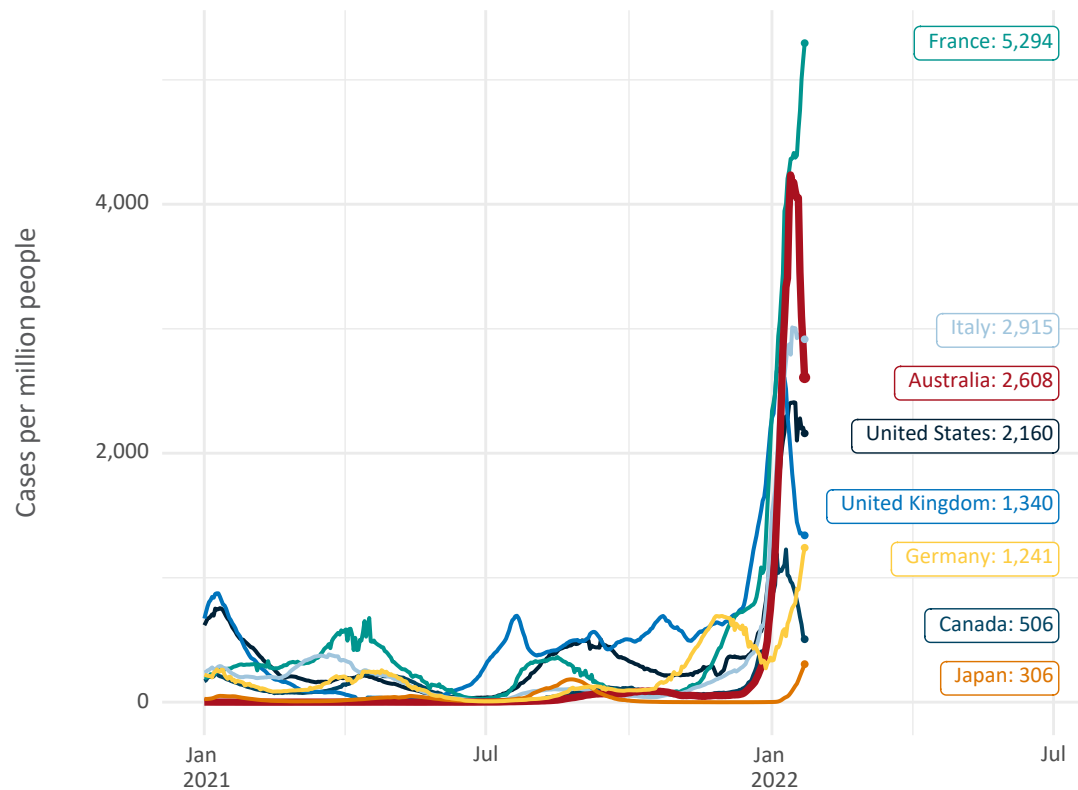
Source: Department of Health (Australia), Our World in Data (international)

Latest data: 23 January

International data – COVID-19

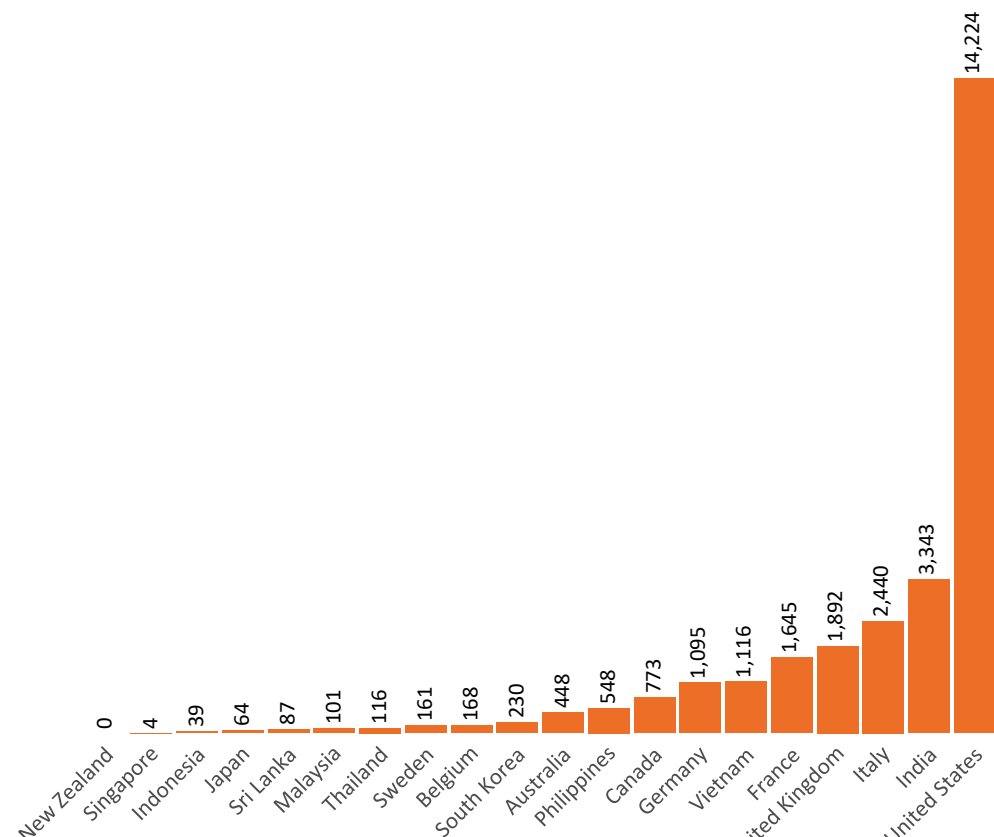
Data as at:
23 Jan 2022

New daily cases per million in 2021, Australia and G7 countries
Smoothed - 7 day average



Source: OWID
Data downloaded: 24 Jan 2022 08:04
Latest data: 22 Jan 2022

COVID-19 deaths in past 7 days - Australia and select countries



Source: OWID
Data downloaded: 24 Jan 2022 08:04
Latest data: 22 Jan 2022

Pandemic Response Payments

Australia's COVID-19
Vaccine Roadmap

Data as at midnight:
23 Jan 2022
Updated weekly



COVID Disaster Payment:	5.89 million claims received - 2.19 million individuals paid a total of \$12.59 billion.
\$200 Income Support Payment:	353,000 claims received - 183,000 individuals paid a total of \$268.91 million.
Pandemic Leave Disaster Payment:	600,000 claims received - 403,000 individuals paid a total of \$451.9 million.



COVID Disaster Payment

assisting during a lockdown
event in a Commonwealth
hotspot.

Income Support Payment \$200

for income support
recipients who lost at
least 8 hours of work.

Pandemic Leave Disaster Payment

for those who have to
self-isolate, quarantine
or care.

For more information visit:
servicesaustralia.gov.au

COVID-19 DISASTER PAYMENTS


Victoria

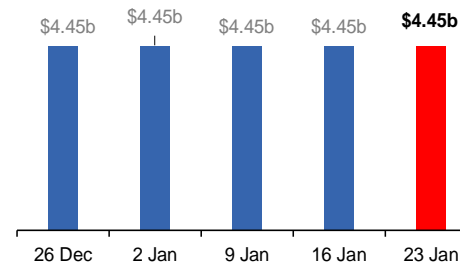
Lockdown (#6) from 6 Aug to 28 Oct
Claiming period ended 9 Dec

**745,000 people have received at least
one COVID Disaster Payment.**

\$4.45b paid out as at 23 Jan 2022.

**\$9,000 paid in initial and reoccurring
payments in the week ending
23 Jan 2022.**

 Cumulative payments made by State since
activation on 8 Jun 2021.




Northern Territory

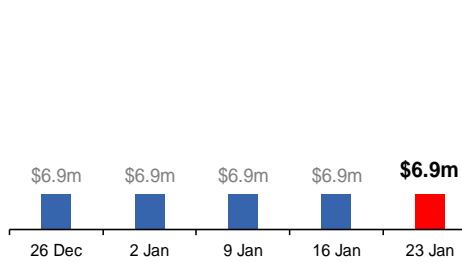
Lockdown (#3) from 16 Nov to 22 Nov
Claiming period ends 27 Dec

**7,500 people have received at least one
COVID Disaster Payment.**

\$6.9m paid out as at 23 Jan 2022.

**\$0 paid in initial payments in the week
ending 23 Jan 2022.**

 Cumulative payments made by Territory since
activation on 25 Aug 2021.



New South Wales

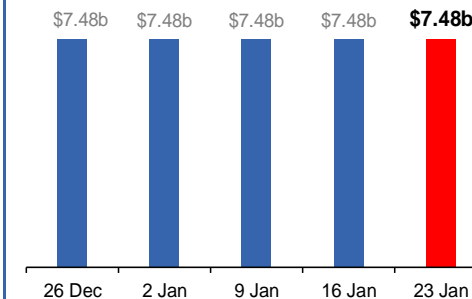
Lockdown from 24 Jun to 10 Oct
Claiming period ended 27 Nov

**1.08m people have received at least
one COVID Disaster Payment.**

\$7.48b paid out as at 23 Jan 2022.

**\$11,000 paid in initial and reoccurring
payments in the week ending
23 Jan 2022.**

 Cumulative payments made by State since
activation on 1 Jul 2021.




Australian Capital Territory

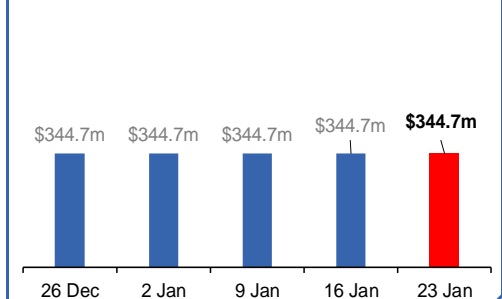
Lockdown from 12 Aug to 14 Oct
Claiming period ended 25 Nov

**65,000 people have received at least
one COVID Disaster Payment.**

\$344.7m paid out as at 23 Jan 2022.

**\$1,000 paid in initial and reoccurring
payments in the week ending
23 Jan 2022.**

 Cumulative payments made by Territory since
activation on 20 Aug 2021.



Data as at midnight:
23 Jan 2022
Updated weekly

Pandemic Response Payments (continued)

COVID-19 DISASTER PAYMENTS


Tasmania

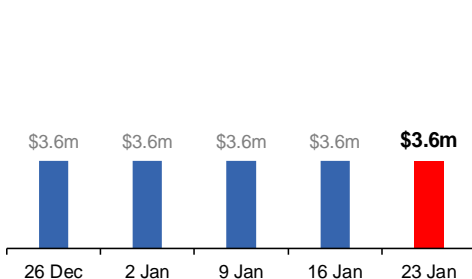
Lockdown from 15 Oct to 18 Oct
Claiming period ended 12 Nov

6,900 people have received at least one COVID Disaster Payment.

\$3.6m paid out as at 23 Jan 2022.

\$0 paid in initial and reoccurring payments in the week ending 23 Jan 2022.

 Cumulative payments made by State since activation on 22 Oct 2021.




Queensland

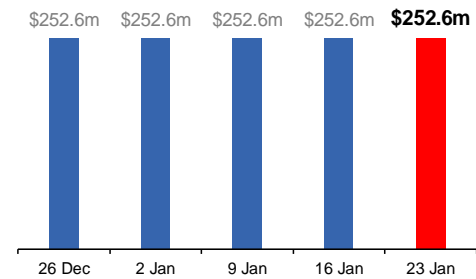
Lockdown from 31 Jul to 11 Aug
Claiming period ended 28 Aug

196,000 people have received at least one COVID Disaster Payment.

\$252.6m paid out as at 23 Jan 2022.

\$0 paid in initial and reoccurring payments in the week ending 23 Jan 2022.

 Cumulative payments made by State since activation on 7 Aug 2021.




South Australia

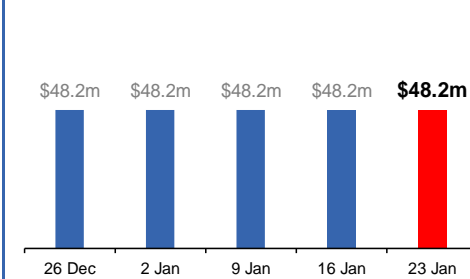
Lockdown from 21 to 27 Jul
Claiming period ended 17 Aug

86,000 people have received at least one COVID Disaster Payment.

\$48.2m paid out as at 23 Jan 2022.

\$0 paid in initial and reoccurring payments in the week ending 23 Jan 2022.

 Cumulative payments made by State since activation on 28 Jul 2021.



Administration and Utilisation

Doses as at 23 January 2022

	Ordered	Available	Administered	Available minus Administered	Estimated Dose Utilisation %
	Up to 23/01/22	Delivered up to 16/01/22 including redistributions	Up to 23/01/22		(see note)
NSW	5,944,920	5,891,620	4,743,106	1,148,514	91%
VIC	6,431,854	6,097,654	5,356,757	740,897	98%
QLD	4,566,138	4,229,018	3,522,936	706,082	93%
WA	2,333,178	2,163,628	2,063,191	100,437	Fully utilised
SA	1,944,980	1,727,840	1,536,999	190,841	99%
TAS	588,510	553,780	541,303	12,477	Fully utilised
NT	344,624	326,646	275,285	51,361	94%
ACT	548,726	516,956	595,106	-	Fully utilised
Jurisdiction delivered total	22,702,930	21,507,142	18,634,683	2,872,459	97%
Commonwealth Aged Care & Disability	1,261,704	1,232,736	1,203,876	28,860	N/A
Commonwealth Primary Care & Other	40,728,400	38,822,214	28,216,701	10,605,513	83%
Total	64,693,034	61,562,092	48,055,260	13,506,832	88%

About this data

- Ordered – Total doses delivered to sites. Based on logistics provider data. This figure includes doses allocated for administration in the coming week.
- Available – total doses that could have been administered to date, less doses re-distributed from States & Territories to Primary Care or Aged Care & Disability (i.e. does not include those deliveries recently received, and intended for use in the coming week).
- Administered – Doses administered as at 23 January 2022.
- The dose utilisation is calculated based on the total doses administered and a small % wastage in line with international standards in relation to total available doses.
- For Aged Care & Disability, the doses available for administration is for the full period (up to 23 January 2022).
- Aged Care & Disability utilisation is not provided as the in-reach rollout is demand-based, with vaccines ordered based on resident numbers.