



Australian Government
Operation COVID Shield

COVID-19 Vaccine Roll-out

23 January 2022

Data as at:
22 Jan 2022

Total vaccine doses



47,934,083 total vaccine doses administered nationally as at 22 January
+191,876 recorded in the last 24 hours



19,658,969

people have had at least one dose

>95%

of people over the age of 16 have had at least one dose



19,164,031

people are fully vaccinated

92.9%

of people over the age of 16 are fully vaccinated



6,459,388

people over the age of 18 who have received more than two doses

NSW
15,267,860
(+55,544 daily increase)

VIC
12,614,595
(+59,462 daily increase)

QLD
9,274,331
(+28,305 daily increase)

WA
4,798,758
(+23,806 daily increase)

TAS
1,058,658
(+2,538 daily increase)

SA
3,280,912
(+15,484 daily increase)

ACT
1,170,118
(+5,533 daily increase)

NT
468,851
(+1,204 daily increase)

*Administration state breakdown indicates state in which a vaccine was administered

**Overall dose count includes instances of more than two doses per person in a small number of cases.

Source: Australian Immunisation Register

Booster Vaccinations

Data as at:
22 Jan 2022



6,459,388 total people over the age of 18 years old
who have received more than two doses nationally

+143,917 people who have received more than two doses
nationally in the last 24 hours

NSW
2,139,311
(42,765 daily
increase)

VIC
1,678,666
(47,576 daily
increase)

QLD
1,198,204
(19,193 daily
increase)

WA
608,880
(15,731 daily
increase)

TAS
141,737
(2,123 daily
increase)

SA
468,739
(11,048 daily
increase)

ACT
133,356
(3,409 daily
increase)

NT
53,245
(734 daily
increase)

37,250

doses administered to persons
residing in other territories or with
missing residential information

Source: Australian Immunisation Register

Data as at: 22 Jan 2022

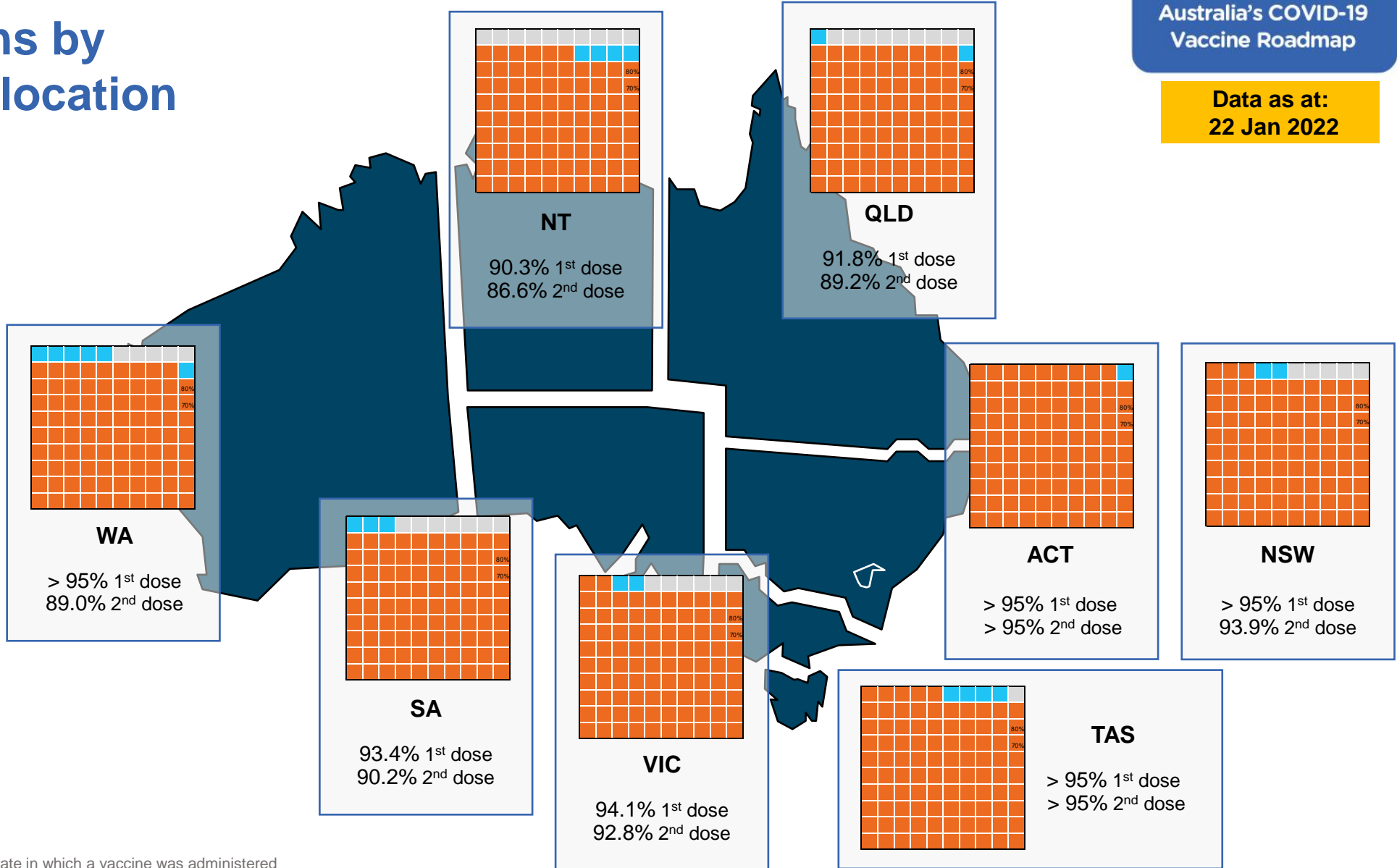
Vaccinations by residential location

First doses

Age	Today	4 weeks ago	8 weeks ago
16+	>95%	94.4%	92.7%
50+	>95%	>95%	>95%
70+	>95%	>95%	>95%

Fully vaccinated

Age	Today	4 weeks ago	8 weeks ago
16+	92.9%	91.4%	87.3%
50+	>95%	>95%	94.3%
70+	>95%	>95%	>95%



*Residential state may differ from the state in which a vaccine was administered

Commonwealth and Jurisdiction vaccine doses administered

Data as at:
22 Jan 2022



47,934,083 total vaccine doses administered nationally as at 22 January

+ **191,876** recorded in the last 24 hours



18,570,691

doses administered by state and territory facilities

+ **79,808**

recorded in the last 24 hours

NSW	Jurisdictions	Commonwealth
Cumulative	4,733,577	10,534,283
Daily increase	18,947	36,597

TAS	Jurisdictions	Commonwealth
Cumulative	536,778	521,880
Daily increase	0	2,538

VIC	Jurisdictions	Commonwealth
Cumulative	5,334,367	7,280,228
Daily increase	28,274	31,188

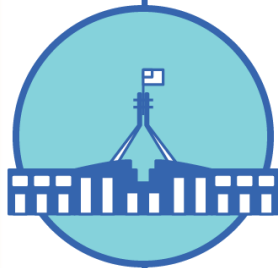
SA	Jurisdictions	Commonwealth
Cumulative	1,528,520	1,752,392
Daily increase	9,235	6,249

QLD	Jurisdictions	Commonwealth
Cumulative	3,513,983	5,760,348
Daily increase	10,240	18,065

ACT	Jurisdictions	Commonwealth
Cumulative	592,135	577,983
Daily increase	3,142	2,391

WA	Jurisdictions	Commonwealth
Cumulative	2,056,959	2,741,799
Daily increase	8,919	14,887

NT	Jurisdictions	Commonwealth
Cumulative	274,372	194,479
Daily increase	1,051	153



29,363,392

doses administered by commonwealth facilities

+ **112,068**

recorded in the last 24 hours

28,159,947 total vaccine doses administered in primary care settings

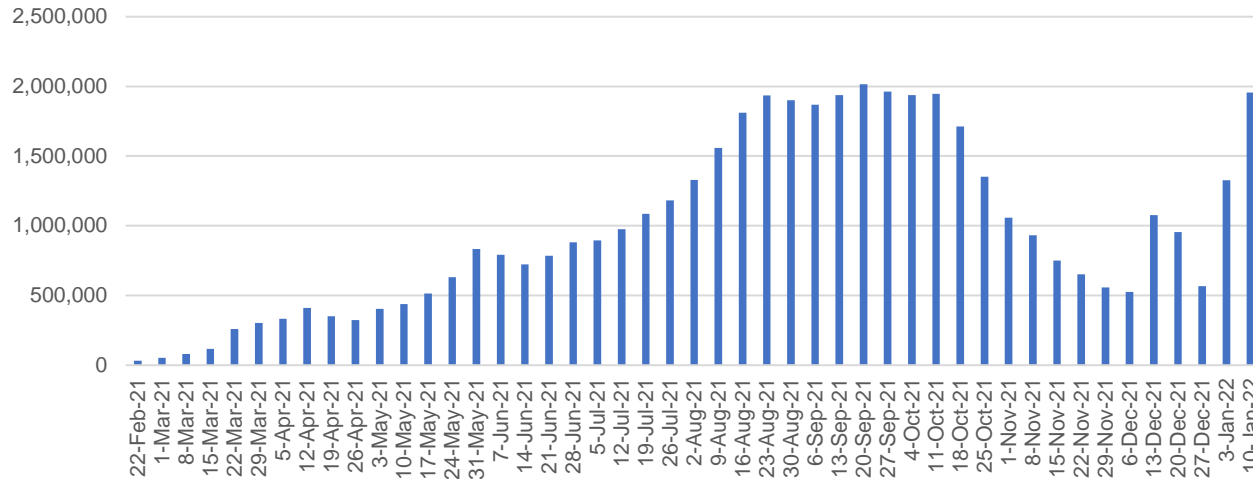
1,203,445 total vaccine doses administered in aged care and disability settings

Vaccine milestone charts

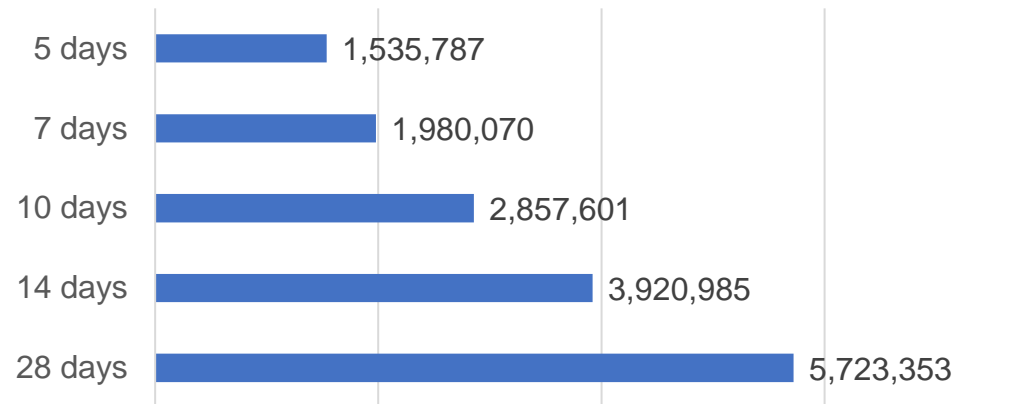
Data as at:
22 Jan 2022

Australia's COVID-19
Vaccine Roadmap

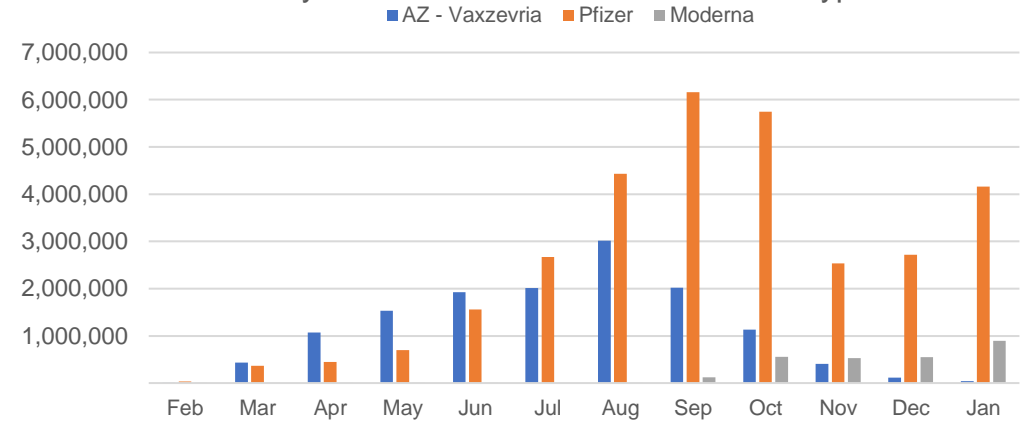
Doses Administered by Week



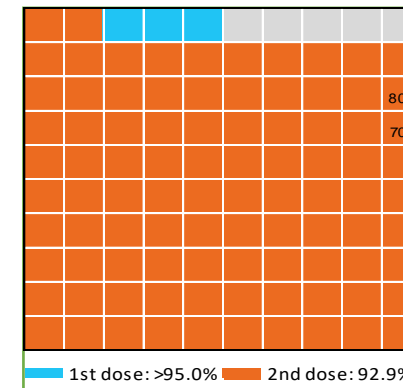
Doses Reported



Doses by administration month and vaccine type



Eligible population percentage coverage



*Sourced from the Australian Immunisation Register.

*Each square represents 1% of the national population. Squares are filled as milestones are achieved.

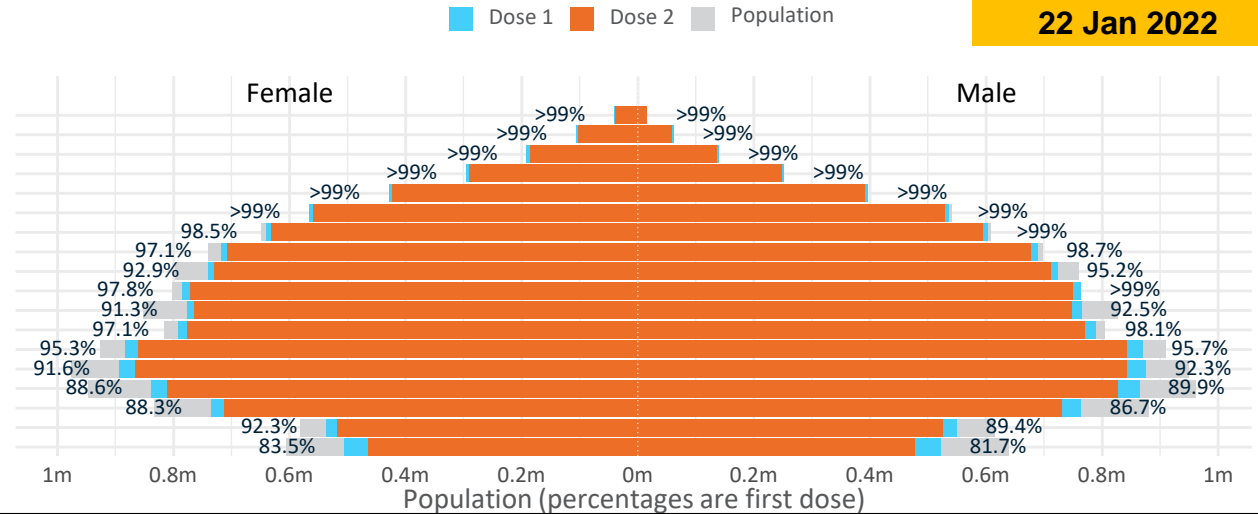
Doses by age and sex

First and second doses by age and sex

	16+	50+	12-15	5-11
Dose 1	95.34% (19,658,969 doses / 20,619,959 people)	>99% (8,696,265 doses / 8,749,703 people)	82.61% (1,027,609 doses / 1,243,990 people)	28.01% (637,667 doses / 2,276,638 people)
Dose 2	92.94% (19,164,031 doses / 20,619,959 people)	97.71% (8,549,650 doses / 8,749,703 people)	75.72% (941,974 doses / 1,243,990 people)	

Data as at: 22 Jan 2022

Age	Dose 1	Dose 2
95+	56,172 (>99%)	52,453 (>99%)
90-94	168,003 (>99%)	161,053 (>99%)
85-89	331,136 (>99%)	321,692 (>99%)
80-84	547,852 (>99%)	537,560 (>99%)
75-79	825,493 (>99%)	813,780 (>99%)
70-74	1,102,154 (>99%)	1,087,332 (98.4%)
65-69	1,244,214 (98.9%)	1,226,180 (97.5%)
60-64	1,408,343 (98.0%)	1,386,692 (96.5%)
55-59	1,464,497 (94.1%)	1,441,354 (92.7%)
50-54	1,548,401 (99.0%)	1,521,554 (97.3%)
45-49	1,542,751 (92.0%)	1,512,176 (90.2%)
40-44	1,584,116 (97.8%)	1,546,447 (95.4%)
35-39	1,756,608 (95.7%)	1,706,852 (93.0%)
30-34	1,776,405 (92.3%)	1,714,494 (89.1%)
25-29	1,711,944 (89.8%)	1,644,632 (86.3%)
20-24	1,504,510 (87.9%)	1,446,772 (84.5%)
16-19	1,086,370 (90.9%)	1,043,008 (87.2%)
12-15	1,027,609 (82.6%)	941,974 (75.7%)

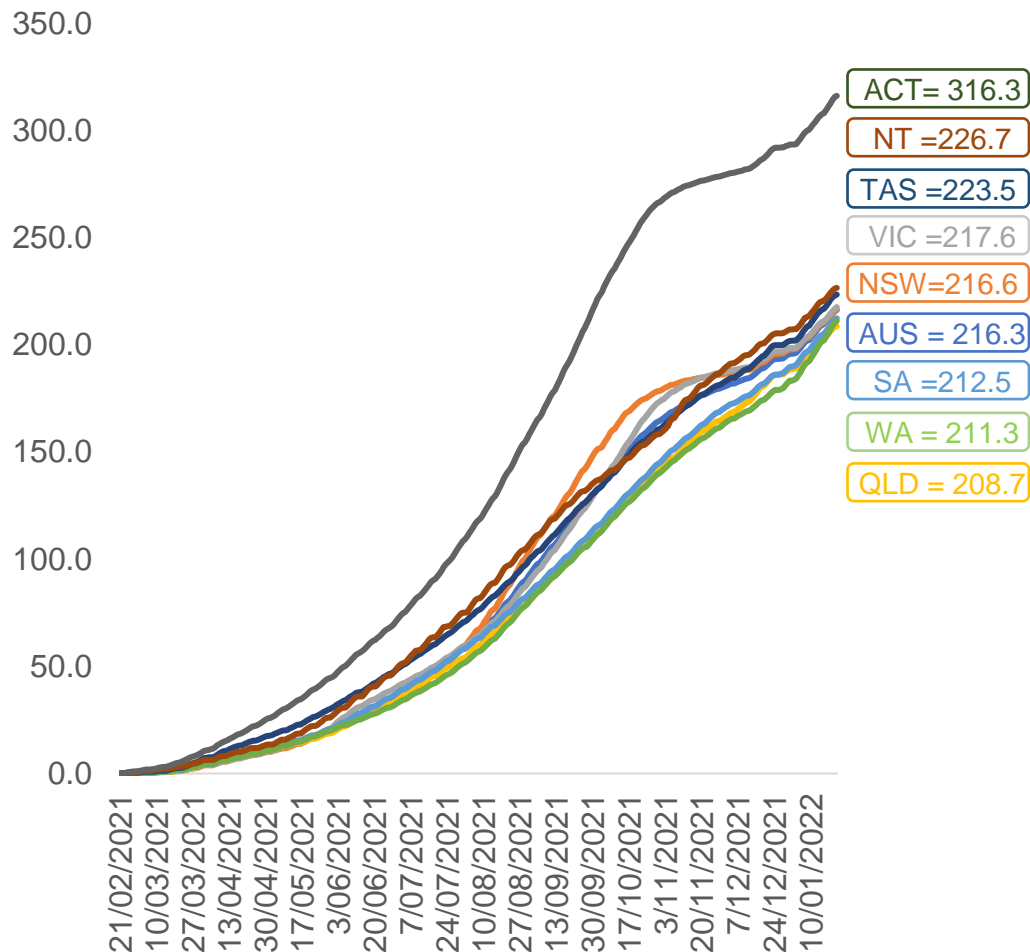


	AUS	ACT	NSW	NT	QLD	SA	TAS	VIC	WA
16 and over - dose 1	19,658,969	348,208	6,258,513	172,113	3,775,825	1,345,339	436,036	5,089,750	2,011,229
16 and over - dose 2	19,164,031	343,508	6,165,240	164,954	3,666,908	1,298,743	421,473	5,018,227	1,883,136
16 and over - population	20,619,959*	344,037	6,565,651	190,571	4,112,707	1,440,400	440,172	5,407,574	2,114,978
16 and over % with dose 1	95.34%	>99%	95.32%	90.31%	91.81%	93.40%	>99%	94.12%	95.09%
16 and over % with dose 2	92.94%	>99%	93.90%	86.56%	89.16%	90.17%	95.75%	92.80%	89.04%
5 to 11 - dose 1	637,667	18,962	200,832	6,780	123,119	44,134	15,446	175,324	49,899
5 to 11 - population	2,276,638	39,789	716,460	24,750	478,731	148,816	45,033	578,499	244,154
5 to 11 % with dose 1	28.01%	47.66%	28.03%	27.39%	25.72%	29.66%	34.30%	30.31%	20.44%
12 to 15 - dose 1	1,027,609	19,873	322,855	10,563	201,672	66,124	21,930	273,415	102,452
12 to 15 - dose 2	941,974	19,166	305,918	9,118	179,952	58,927	19,744	260,380	81,497
12 to 15 - population	1,243,990	19,693	390,330	13,060	270,146	82,747	26,308	308,611	132,869
12 to 15 % with dose 1	82.61%	>99%	82.71%	80.88%	74.65%	79.91%	83.36%	88.60%	77.11%
12 to 15 % with dose 2	75.72%	97.32%	78.37%	69.82%	66.61%	71.21%	75.05%	84.37%	61.34%

*National population will not equal sum of listed jurisdictions due to a small number of people counted in national population residing in some 'other' territories. Sum of state doses will not add to national total as some records are unable to be geocoded to a State or Territory. Doses sourced from Australian Immunisation Register, population from ABS ERP June 2020

Vaccinations by location

Cumulative total doses administered vs eligible state populations*

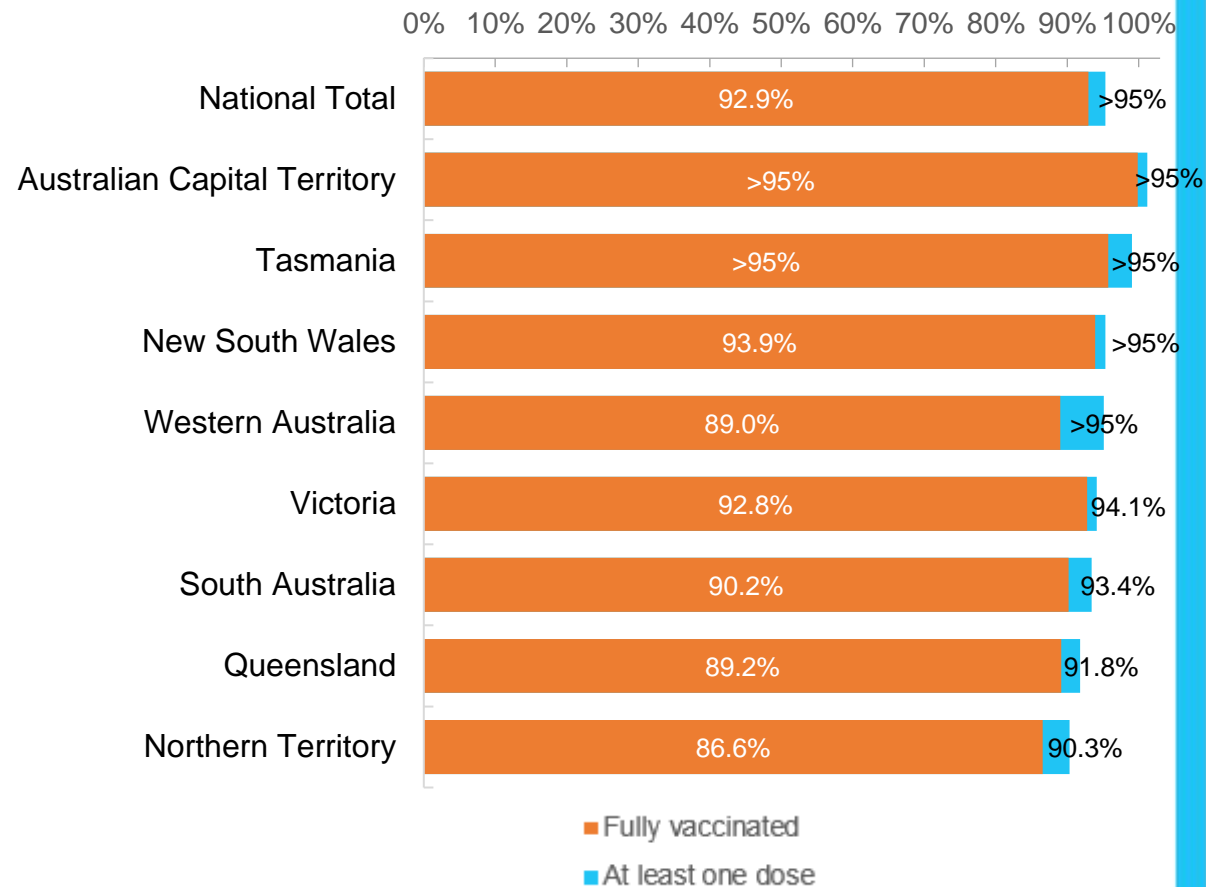


*Not an indication of percentage vaccinated, numbers will exceed 100 due to multiple doses required per person of the population. All doses are included for those aged 12 and above, and are based on vaccination provider location.

Data as at:
22 Jan 2022

Australia's COVID-19
Vaccine Roadmap

First and Second Doses by residential location



Aboriginal and Torres Strait Islander peoples

Number of people vaccinated

Data as at:
18 Jan 2022
Updated weekly

Australia's COVID-19
Vaccine Roadmap



422,837

people over the age of 16
have had at least one dose

80.7%

of people over the age of 16
have had at least one dose



389,157

people over the age of 16
are fully vaccinated

74.3%

of people over the age of 16 are
fully vaccinated



**44,618
(62.6%)**

people aged 12-15 years
have had at least one dose

173 Aboriginal community controlled health services (ACCHS)

0#	50	27	41	12	3	21	19
ACT	NSW	NT	QLD	SA	TAS	VIC	WA

Medicare Address State ^{##}	Individuals Dose 1	Individuals Dose 1 %	Individuals Dose 2	Individuals Dose 2 %
Australian Capital Territory	4,912	90.9%	4,767	88.2%
New South Wales	136,460	86.3%	132,696	84.0%
Northern Territory	40,694	86.3%	36,609	77.6%
Queensland	111,437	78.0%	101,243	70.9%
South Australia	19,123	75.9%	16,982	67.4%
Tasmania	14,457	86.5%	13,652	81.7%
Victoria	35,378	88.8%	34,339	86.2%
Western Australia	45,410	71.6%	36,609	57.8%
Unknown/Other Territories	14,966	59.0%	12,260	48.4%
Totals	422,837	80.7%	389,157	74.3%

Source: Australian Immunisation Register

*Identifying as Aboriginal and Torres Strait Islander is optional and the estimated population may be under reported.

**Includes all Aboriginal and Torres Strait Islander peoples who have received a vaccination, not limited to those administered in an ACCHS setting

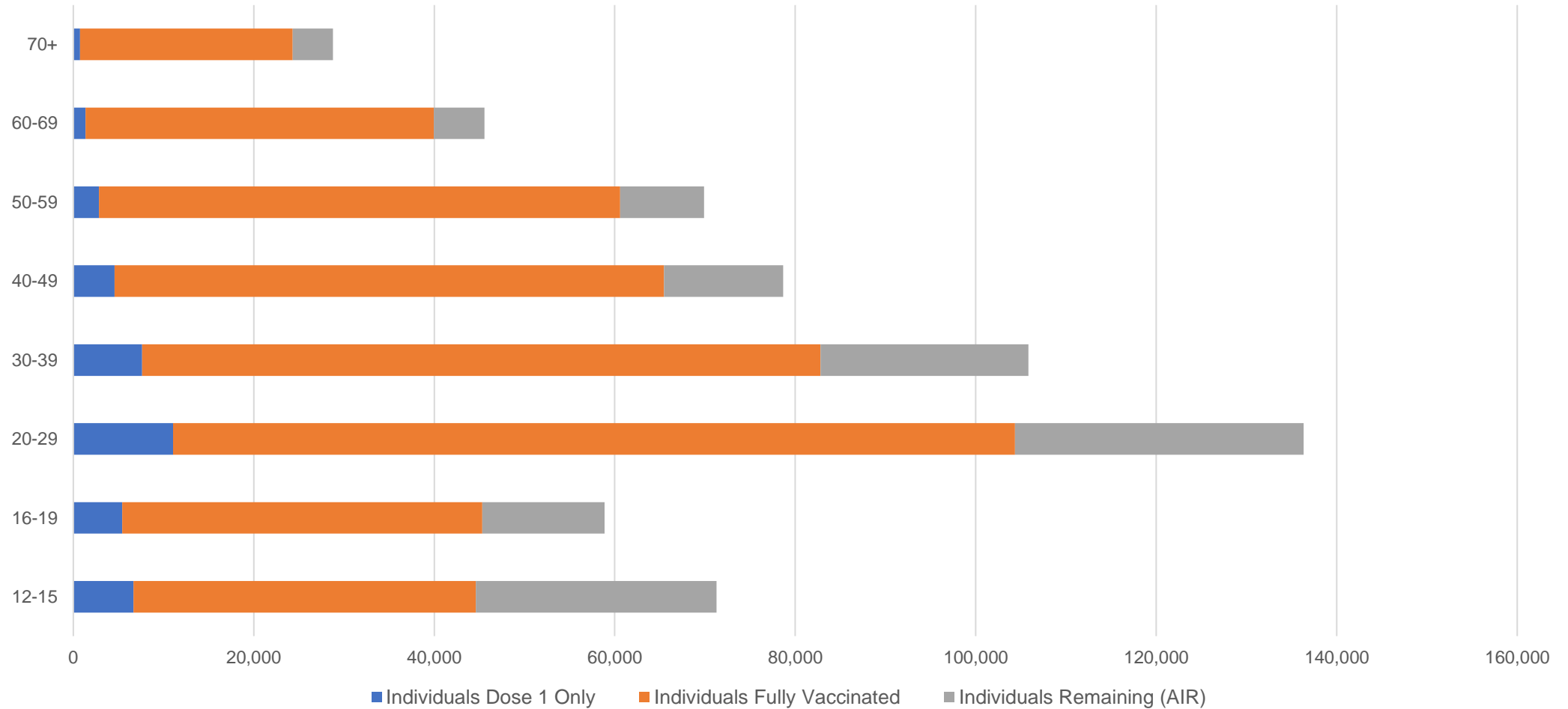
#ACCHS in the ACT are currently operating as a Commonwealth Vaccine Clinics so not included to avoid double counting

##The above table includes all identified Aboriginal and Torres Strait Islander people who are aged 16 and above by their state of residence.

Aboriginal and Torres Strait Islander peoples Number of people vaccinated by age

Data as at:
18 Jan 2022
Updated weekly

Australia's COVID-19
Vaccine Roadmap



Source: Australian Immunisation Register

Commonwealth primary care

Data as at:
22 Jan 2022

Australia's COVID-19
Vaccine Roadmap



Primary care vaccine administration sites

5,674	137	173	3,472
GPs	CVCs	ACCHS	Pharmacies



28,159,947 total vaccine doses administered
primary care settings as at 22 January
+ 110,885 recorded in the last 24 hours

Primary care vaccinations by provider type

	Doses administered	Daily increase	7 day increase
General Practice* includes other Commonwealth	23,683,809	78,951	997,517
Pharmacy	4,476,138	31,934	434,840

NSW
10,008,090
(+36,288 daily increase)

VIC
7,004,949
(+30,529 daily increase)

QLD
5,503,272
(+15,838 daily increase)

WA
2,629,683
(+14,600 daily increase)

TAS
504,562
(+2,498 daily increase)

SA
1,678,739
(+6,035 daily increase)

ACT
446,284
(+2,124 daily increase)

NT
174,268
(+51 daily increase)

210,100

doses administered to persons residing in other territories or with missing residential information

*General practice includes Commonwealth Vaccination Clinics, Aboriginal Community Health Centres, Royal Flying Doctor Service and other Commonwealth vaccination facilities

Source: Australian Immunisation Register

Data as at:
22 Jan 2022

Commonwealth aged care and disability doses administered



1,203,445 (+ 1,183 last 24 hours)

Total vaccine doses administered in aged care and disability facilities as at 22 January

Number of doses administered as part of the Commonwealth aged and disability care rollout

NSW
544,732
(+139 daily increase)

VIC
225,391
(+418 daily increase)

QLD
188,696
(+147 daily increase)

WA
90,582
(+220 daily increase)

TAS
21,477
(+2 daily increase)

SA
80,054
(+98 daily increase)

ACT
15,776
(+32 daily increase)

NT
6,885
(+17 daily increase)

29,852

doses administered to persons residing in other territories or with missing residential information

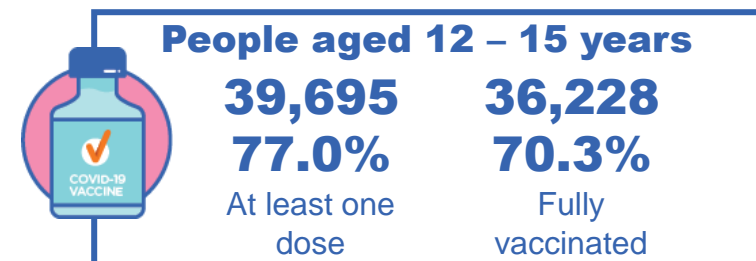
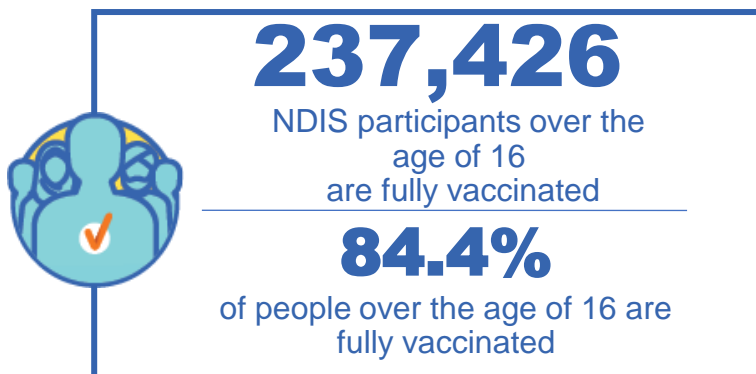
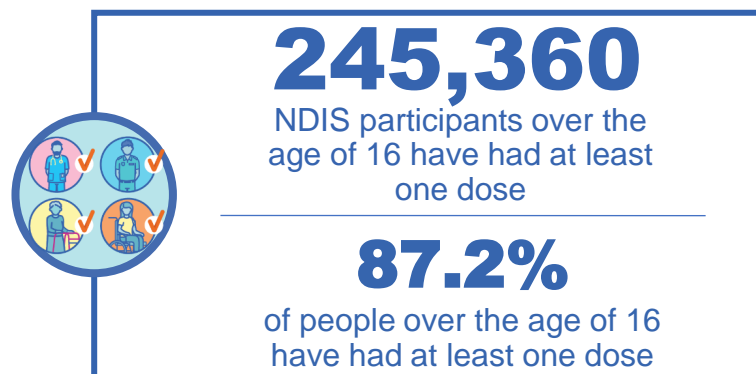
*Sourced from the Australian Immunisation Register. Includes all persons vaccinated at participating residential aged care, disability and related industry settings.
**State level breakdown indicates the residential location and may not align to the state in which the vaccination occurred.

Source: Australian Immunisation Register

National Disability Insurance Scheme (NDIS) reported vaccinations

Data as at:
19 January 2022
Updated weekly

Australia's COVID-19
Vaccine Roadmap



NDIS participant vaccinations

	People aged 16+ with at least one dose	People aged 16+ fully vaccinated	% People aged 16+ with at least one dose	% People aged 16+ fully vaccinated
ACT	4,732	4,657	90.0%	88.6%
NSW	76,734	75,345	88.4%	86.8%
NT	2,113	1,991	78.1%	73.6%
QLD	47,795	45,863	86.0%	82.5%
SA	19,860	18,907	84.7%	80.6%
TAS	6,111	5,810	86.8%	82.5%
VIC	65,972	64,584	88.9%	87.1%
WA	22,043	20,269	83.9%	77.1%
National	245,360	237,426	87.2%	84.4%

Source: Linkage between National Disability Insurance Agency data and the Australian Immunisation Register. Total NDIS participants data as at 17 January. Australian Immunisation Register data as at 17 January. Includes all participants regardless of residence type.

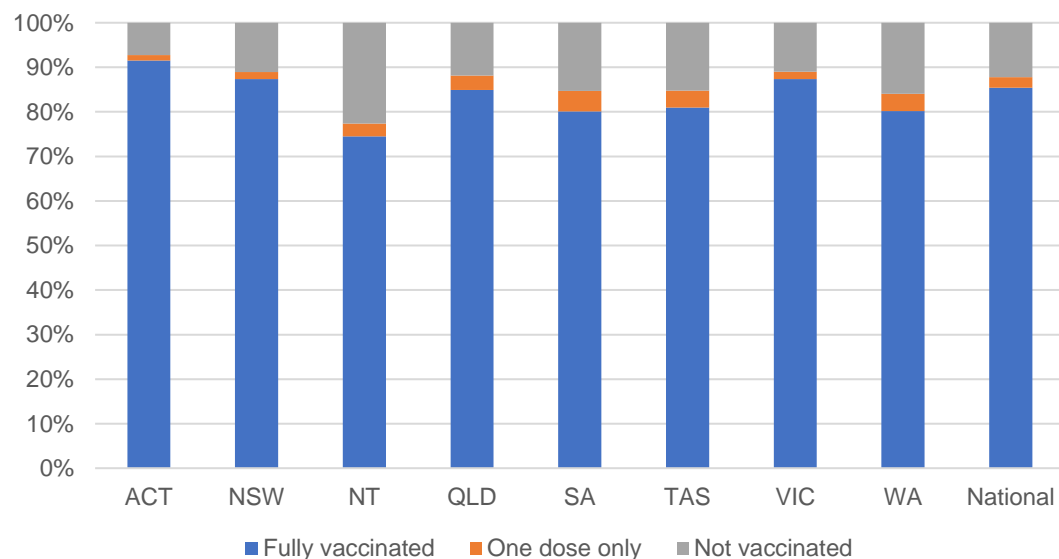
National Disability Insurance Scheme (NDIS) reported vaccinations

Data as at:
19 January 2022
Updated Weekly

Australia's COVID-19
Vaccine Roadmap

NATIONAL	Total people with at least one dose	People fully vaccinated	Total number of individuals in cohort	% People with at least one dose	% People fully vaccinated
NDIS participants living in disability accommodation	20,035	19,537	22,800	87.90%	85.70%

NDIS participants in disability and aged care accommodation



Source: Linkage between National Disability Insurance Agency data and the Australian Immunisation Register. Includes participants residing in disability accommodation only.
Source: Total NDIS participants numbers as at 17 October. Participant data as at 13 December. Australian Immunisation Register data as at 14 December. Worker data as at 12 December.

NDIS workforce vaccinations

	NDIS workers with at least one dose	NDIS workers fully vaccinated	% NDIS workers with at least one dose	% NDIS workers fully vaccinated
NSW	108,861	108,259	96.6%	96.0%
VIC	110,085	109,529	97.5%	97.0%
QLD	64,162	63,086	96.0%	94.4%
WA	30,982	30,035	97.5%	94.6%
SA	33,848	32,635	98.1%	94.6%
TAS	10,022	9,804	98.5%	96.4%
ACT	3,382	3,371	99.3%	99.0%
NT	3,052	3,006	99.3%	97.9%
TOTAL	364,394	359,725	97.1%	95.8%

Source: the NDIS Commission has established a requirement for registered NDIS providers who provide intensive disability support services to report on the vaccination status of workers they employ, or otherwise engage, to deliver NDIS-funded supports and services, and who are required to be vaccinated in accordance with in-force state and territory public health orders. The statistics reflect data reported to the NDIS Commission by registered NDIS providers and should be considered indicative and subject to change

Note: Some registered NDIS providers are yet to report on the vaccination status of their workforce. The NDIS Commission is working with those providers around reporting requirements.

Remaining workers not included include those exempt from vaccination requirements, workers whose vaccination status is not yet verified by the provider (such as workers on leave) and provider reporting anomalies.

Residential aged care vaccination rollout

Data as at: 20 Jan 2022

Residential aged care facilities status

100%

Commonwealth facilities visited (2,590 planned sites)

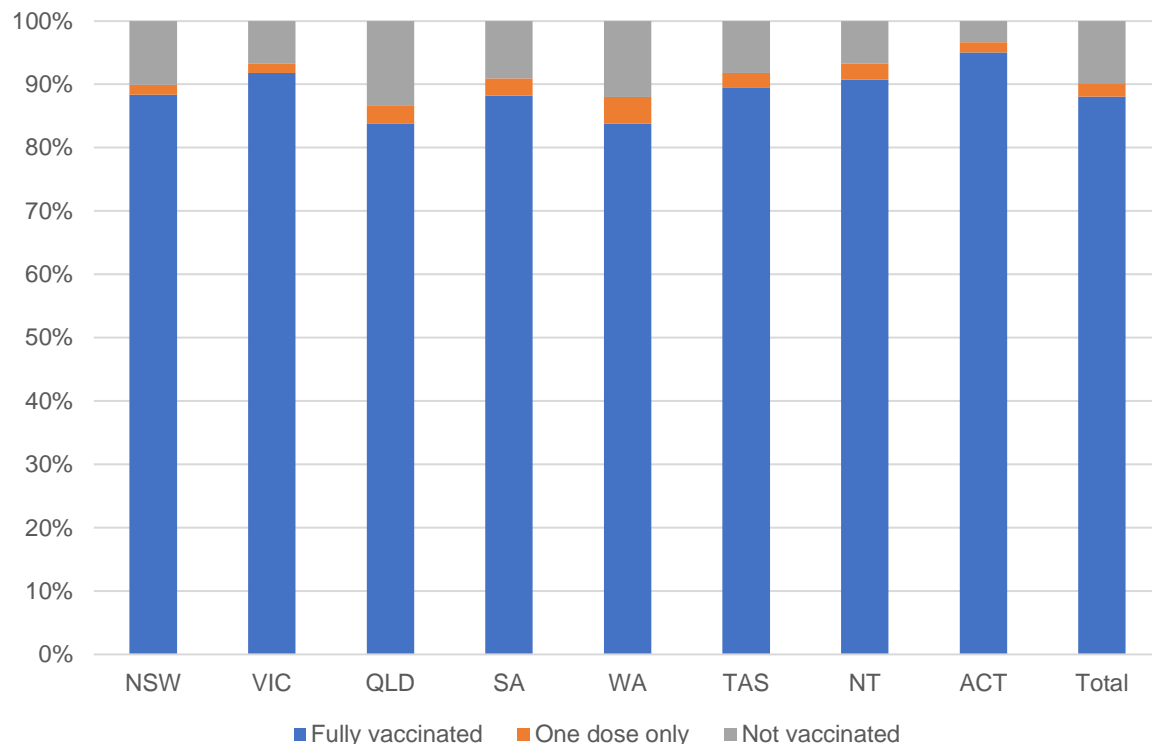
170,533

People fully vaccinated

174,696

People with at least one dose

Aged care resident vaccinations



Aged care worker vaccinations

Jurisdictions	Total workers with at least one dose	Workers fully vaccinated	% Workers with at least one dose	% Workers fully vaccinated
NSW	78,456	78,417	98.4%	98.4%
VIC	71,018	71,018	99.6%	99.6%
QLD	48,737	48,721	99.5%	99.5%
SA	27,370	27,319	99.1%	98.9%
WA	23,834	23,757	99.9%	99.6%
TAS	7,557	7,542	99.4%	99.2%
NT	834	833	100.0%	99.9%
ACT	2,912	2,912	95.9%	95.9%
Total	260,718	260,519	99.1%	99.1%

Source: My Aged Care Portal vaccination progress

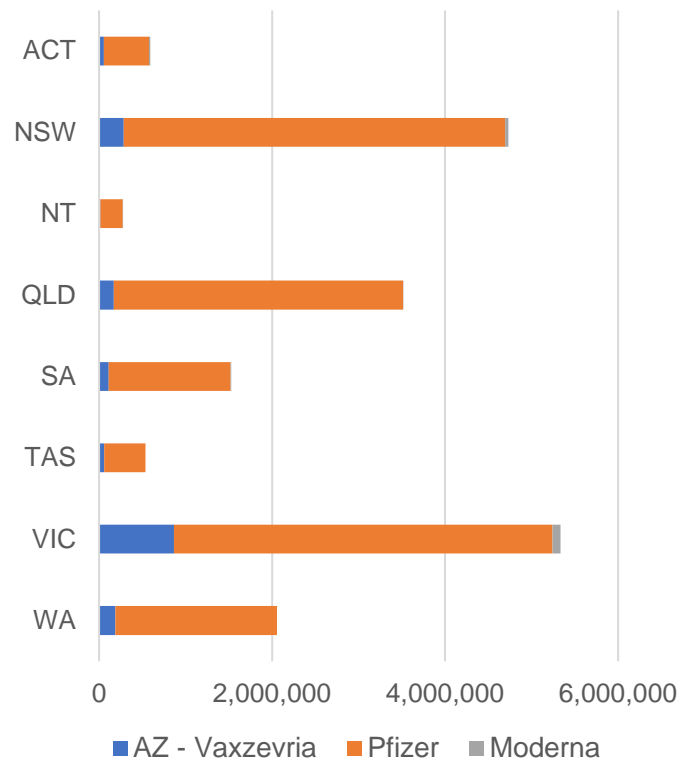
*Status updates are provided by facilities at least once per week. Reporting is updated Monday to Friday to encompass different facility updates being made on different days.

Data is sourced directly from Aged Care Service Providers and is not drawn or closely aligned with data from AIR due to inconsistencies and potential lags in uploading of records.

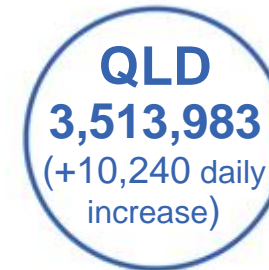
Data as at:
22 Jan 2022

Jurisdiction administered

Total vaccine doses administered in State and Territory clinics as at 22 January



18,570,691 total vaccine doses administered in State and Territory clinics as at 22 January
 + **79,808** recorded in the last 24 hours
 + **528,743** recorded in the last 7 days

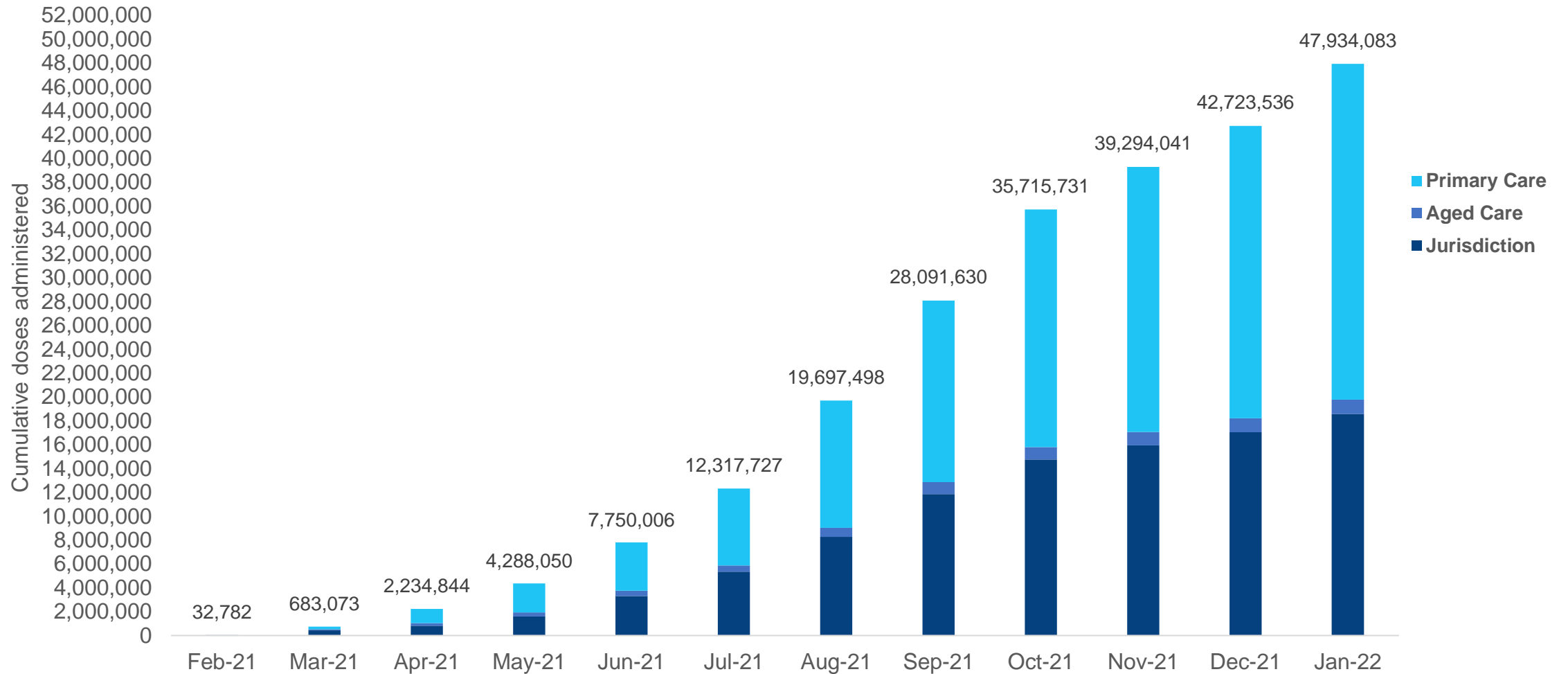


*Sourced from the Australian Immunisation Register. Numbers are calculated as difference in daily cumulative reported numbers to allow for historical corrections.

Source: Australian Immunisation Register

Cumulative doses administered by channel

Data as at:
22 Jan 2022



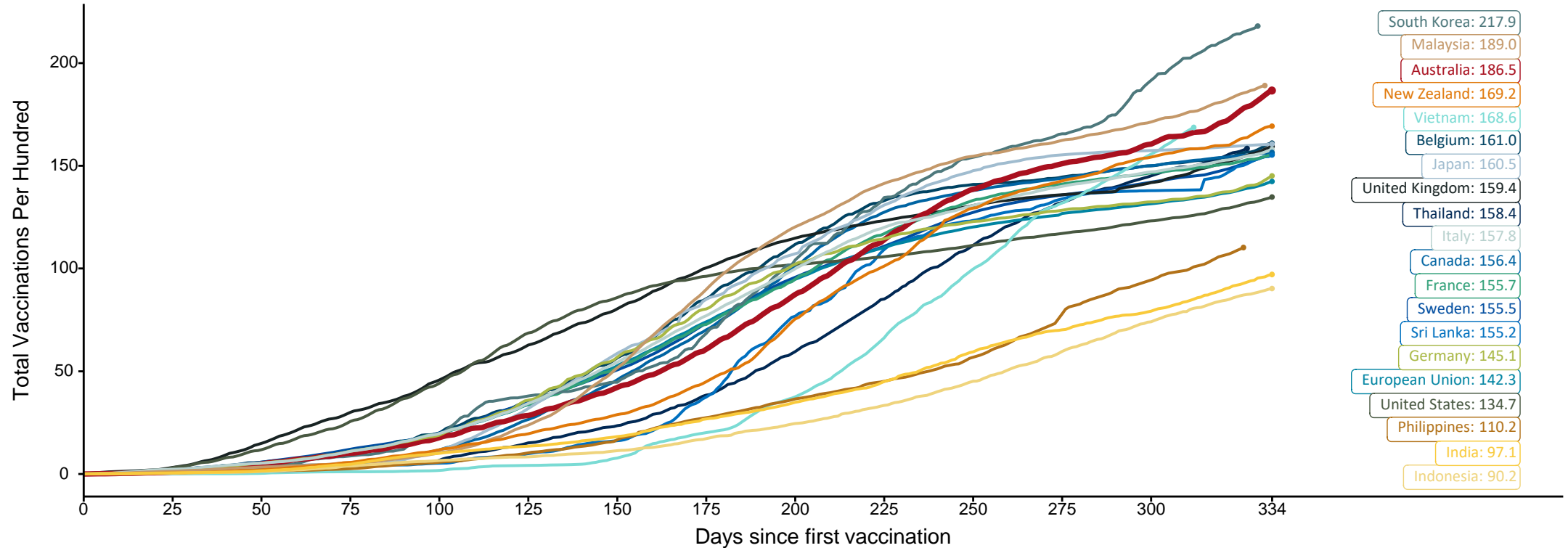
Source: Australian Immunisation Register

Doses at equivalent stages of rollout (Day 334)

Data as at:
22 Jan 2022

The x-axis is truncated at the length of Australia's vaccination program. Countries with intermittent reporting have had their doses per 100 imputed to Australia's current stage of rollout. Israel excluded as it is beyond scale of the graph

Cumulative doses administered (22 Jan): **47,934,083**

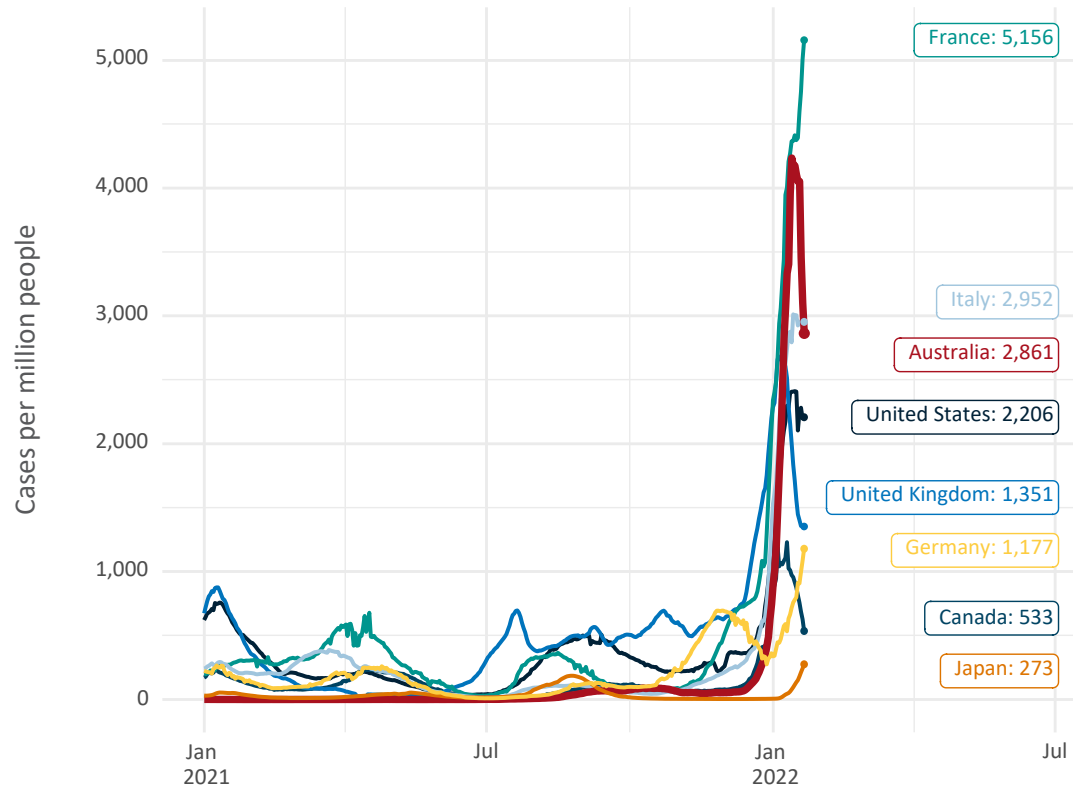


Note: From 15 September 2021, data for Australia includes all doses administered to people 12 and over. Prior to 15 September, data was for 16 and over
 Due to data revisions, Singapore has been removed from the chart
 Source: Department of Health (Australia), Our World in Data (international)
 Latest data: 22 January

Data as at:
22 Jan 2022

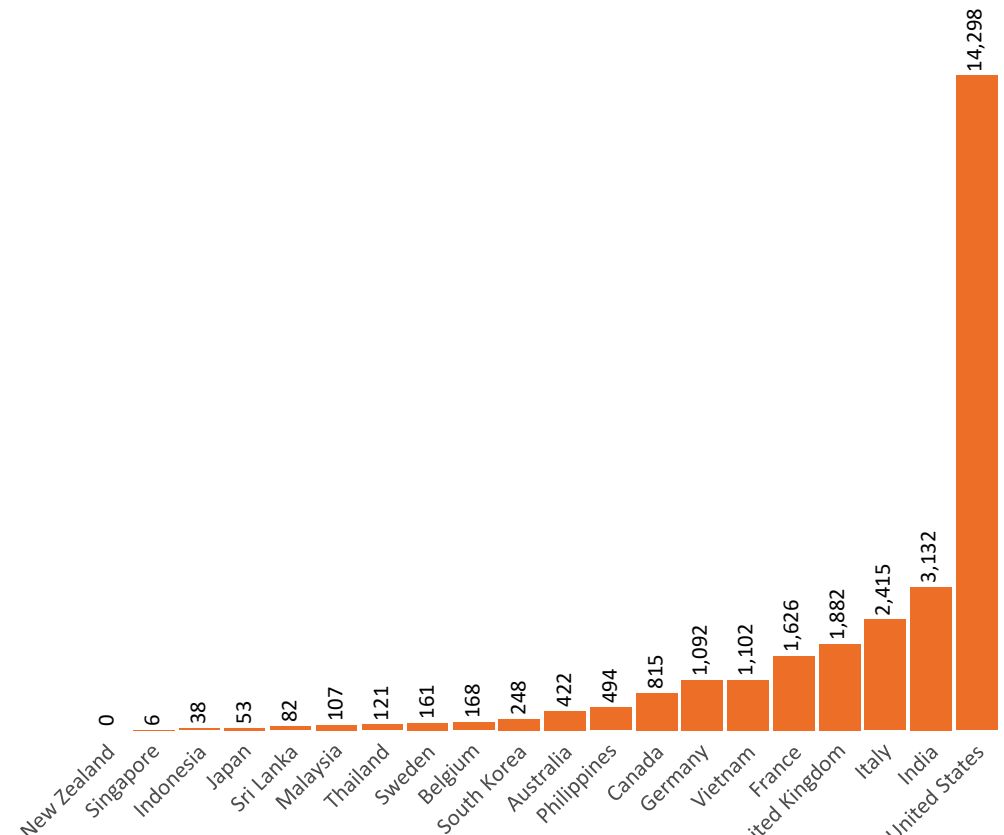
International data – COVID-19

New daily cases per million in 2021, Australia and G7 countries
Smoothed - 7 day average



Source: OWID
Data downloaded: 23 Jan 2022 08:30
Latest data: 21 Jan 2022

COVID-19 deaths in past 7 days - Australia and select countries



Source: OWID
Data downloaded: 23 Jan 2022 08:30
Latest data: 21 Jan 2022

Pandemic Response Payments

Data as at midnight:
16 Jan 2022
Updated weekly



2.38 million
People have received at least one COVID Disaster Payment (including ISP200)

\$13.16 billion
Paid Out as at 16 Jan 2022


6.23 million
Claims granted across three different payments



96%
of Claims Received Digitally



COVID Disaster Payment:	5.89 million claims received - 2.19 million individuals paid a total of \$12.59 billion.
\$200 Income Support Payment:	353,000 claims received - 183,000 individuals paid a total of \$268.91 million.
Pandemic Leave Disaster Payment:	431,000 claims received - 217,000 individuals paid a total of \$295.8 million.



THREE PAYMENTS AVAILABLE

COVID Disaster Payment
assisting during a lockdown event in a Commonwealth hotspot.

Income Support Payment \$200
for income support recipients who lost at least 8 hours of work.

Pandemic Leave Disaster Payment
for those who have to self-isolate, quarantine or care.

For more information visit:
servicesaustralia.gov.au

COVID-19 DISASTER PAYMENTS

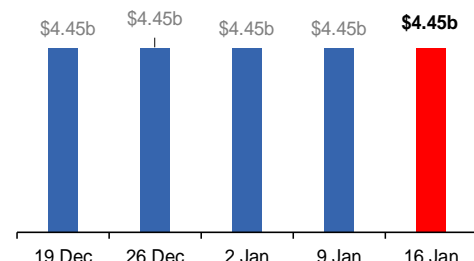
Victoria
Lockdown (#6) from 6 Aug to 28 Oct
Claiming period ended 9 Dec

745,000 people have received at least one COVID Disaster Payment.

\$4.45b paid out as at 16 Jan 2022.

\$17,000 paid in initial and reoccurring payments in the week ending 16 Jan 2022.

Cumulative payments made by State since activation on 8 Jun 2021.



Date	Cumulative Payments (\$b)
19 Dec	\$4.45b
26 Dec	\$4.45b
2 Jan	\$4.45b
9 Jan	\$4.45b
16 Jan	\$4.45b

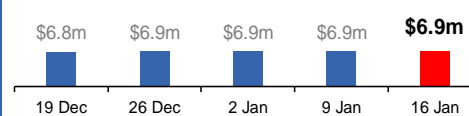
Northern Territory
Lockdown (#3) from 16 Nov to 22 Nov
Claiming period ends 27 Dec

7,500 people have received at least one COVID Disaster Payment.

\$6.9m paid out as at 16 Jan 2022.

\$3,000 paid in initial payments in the week ending 16 Jan 2022.

Cumulative payments made by Territory since activation on 25 Aug 2021.



Date	Cumulative Payments (\$m)
19 Dec	\$6.8m
26 Dec	\$6.9m
2 Jan	\$6.9m
9 Jan	\$6.9m
16 Jan	\$6.9m

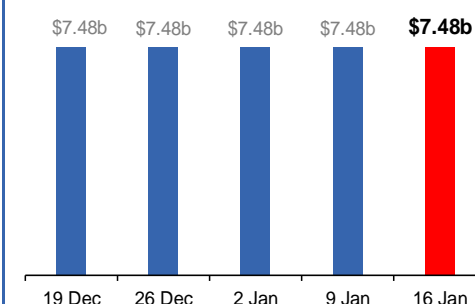
New South Wales
Lockdown from 24 Jun to 10 Oct
Claiming period ended 27 Nov

1.08m people have received at least one COVID Disaster Payment.

\$7.48b paid out as at 16 Jan 2022.

\$5,000 paid in initial and reoccurring payments in the week ending 16 Jan 2022.

Cumulative payments made by State since activation on 1 Jul 2021.



Date	Cumulative Payments (\$b)
19 Dec	\$7.48b
26 Dec	\$7.48b
2 Jan	\$7.48b
9 Jan	\$7.48b
16 Jan	\$7.48b

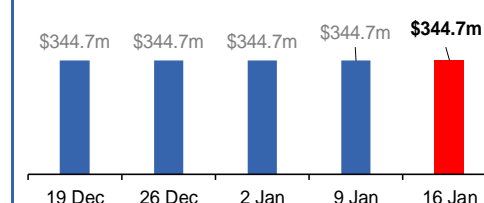
Australian Capital Territory
Lockdown from 12 Aug to 14 Oct
Claiming period ended 25 Nov

65,000 people have received at least one COVID Disaster Payment.

\$344.7m paid out as at 16 Jan 2022.

\$0 paid in initial and reoccurring payments in the week ending 16 Jan 2022.

Cumulative payments made by Territory since activation on 20 Aug 2021.



Date	Cumulative Payments (\$m)
19 Dec	\$344.7m
26 Dec	\$344.7m
2 Jan	\$344.7m
9 Jan	\$344.7m
16 Jan	\$344.7m

Data as at midnight:
16 Jan 2022
Updated weekly

Pandemic Response Payments (continued)

COVID-19 DISASTER PAYMENTS

Tasmania

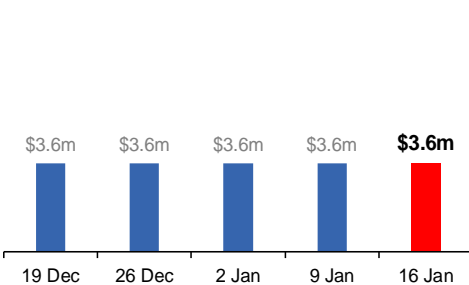
Lockdown from 15 Oct to 18 Oct
Claiming period ended 12 Nov

6,900 people have received at least one COVID Disaster Payment.

\$3.6m paid out as at 16 Jan 2022.

\$0 paid in initial and reoccurring payments in the week ending 16 Jan 2022.

 Cumulative payments made by State since activation on 22 Oct 2021.




Queensland

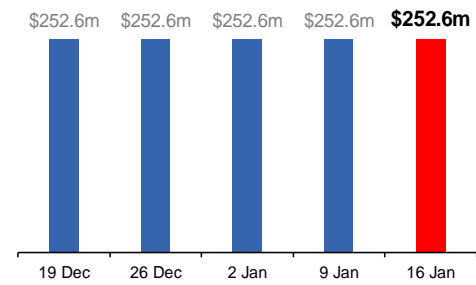
Lockdown from 31 Jul to 11 Aug
Claiming period ended 28 Aug

196,000 people have received at least one COVID Disaster Payment.

\$252.6m paid out as at 16 Jan 2022.

\$600 paid in initial and reoccurring payments in the week ending 16 Jan 2022.

 Cumulative payments made by State since activation on 7 Aug 2021.




South Australia

Lockdown from 21 to 27 Jul
Claiming period ended 17 Aug

86,000 people have received at least one COVID Disaster Payment.

\$48.2m paid out as at 16 Jan 2022.

\$600 paid in initial and reoccurring payments in the week ending 16 Jan 2022.

 Cumulative payments made by State since activation on 28 Jul 2021.

