



Australian Government
Operation COVID Shield

COVID-19 Vaccine Roll-out

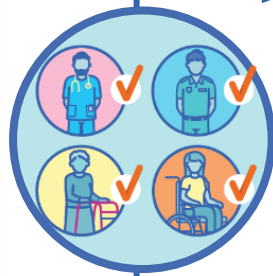
17 January 2022

Data as at:
16 Jan 2022

Total vaccine doses



46,069,292 total vaccine
doses administered nationally as at 16 January
+115,279 recorded in the last 24 hours



19,602,663

people have had at least one
dose

>95%

of people over the age of 16
have had at least one dose



19,087,193

people are fully vaccinated

92.6%

of people over the age of 16 are
fully vaccinated



5,075,274

people over the age of 18
who have received more
than two doses

NSW
14,696,355
(+27,467 daily
increase)

VIC
12,131,999
(+29,759 daily
increase)

QLD
8,947,442
(+23,200 daily
increase)

WA
4,558,876
(+13,707 daily
increase)

TAS
1,019,062
(+5,719 daily
increase)

SA
3,143,743
(+10,652 daily
increase)

ACT
1,119,255
(+3,898 daily
increase)

NT
452,560
(+877 daily
increase)

*Administration state breakdown indicates state in which a vaccine was administered

**Overall dose count includes instances of more than two doses per person in a small number of cases.

Source: Australian Immunisation Register

Booster Vaccinations

Australia's COVID-19
Vaccine Roadmap

Data as at:
16 Jan 2022



5,075,274 total people over the age of 18 years old
who have received more than two doses nationally

+77,181 people who have received more than two doses
nationally in the last 24 hours

NSW
1,688,494
(20,675 daily
increase)

VIC
1,302,248
(20,687 daily
increase)

QLD
968,907
(13,909 daily
increase)

WA
456,379
(8,686 daily
increase)

TAS
113,738
(2,425 daily
increase)

SA
369,540
(7,367 daily
increase)

ACT
104,819
(1,897 daily
increase)

NT
42,993
(544 daily
increase)

28,156

doses administered to persons
residing in other territories or with
missing residential information

Source: Australian Immunisation Register

Vaccinations by state of residence

Australia's COVID-19
Vaccine Roadmap

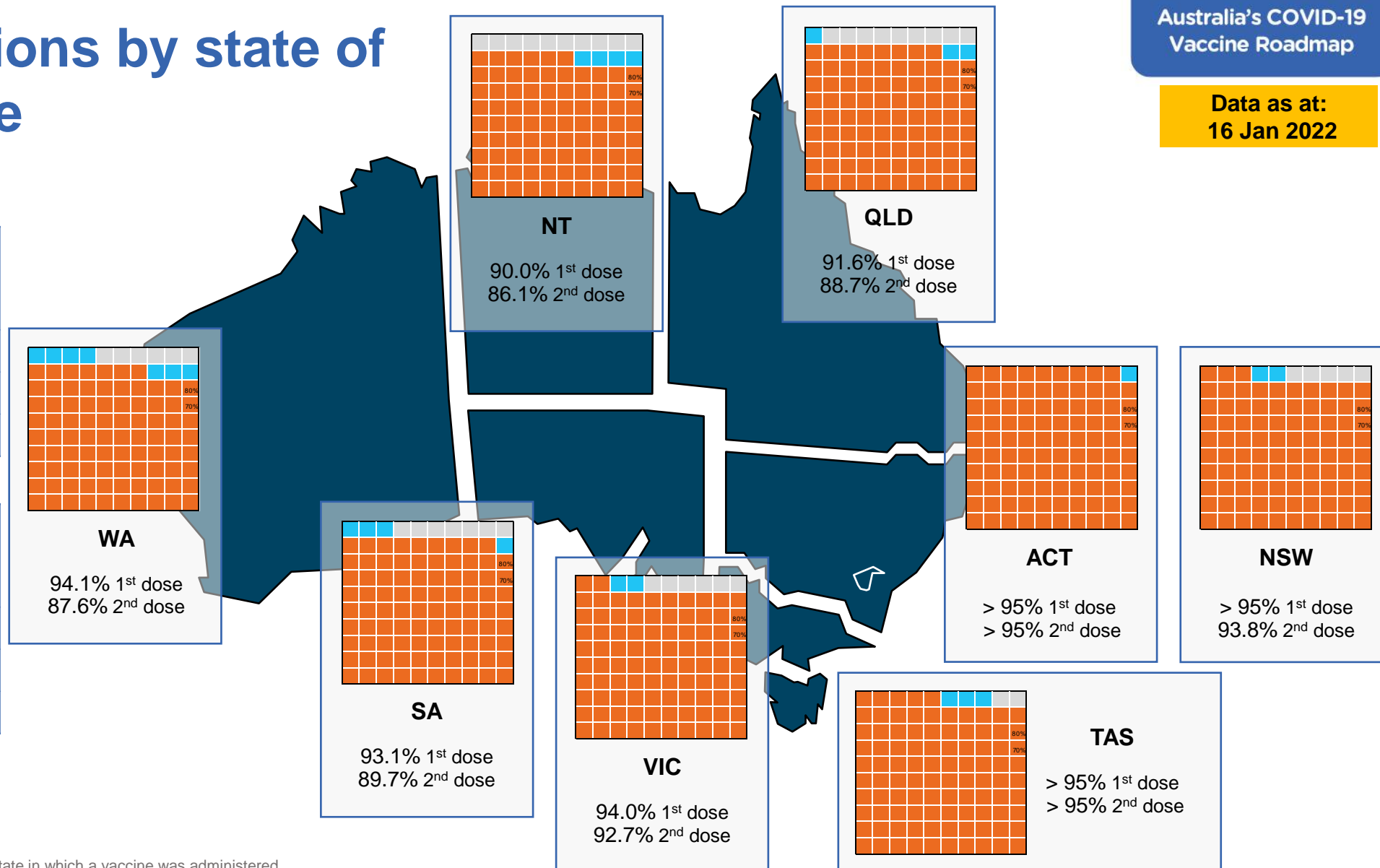
Data as at:
16 Jan 2022

First doses

Age Today	4 weeks ago	8 weeks ago
16+	>95%	94.1%
50+	>95%	>95%
70+	>95%	>95%

Fully vaccinated

Age Today	4 weeks ago	8 weeks ago
16+	92.6%	90.8%
50+	>95%	>95%
70+	>95%	>95%



*Residential state may differ from the state in which a vaccine was administered

Commonwealth and Jurisdiction vaccine doses administered

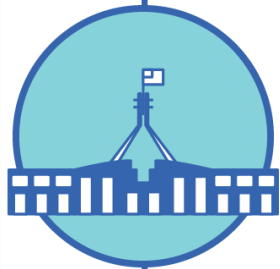
Data as at:
16 Jan 2022



46,069,292 total vaccine
doses administered nationally as at 16 January
+ 115,279 recorded in the last 24 hours



18,097,080
doses administered by state
and territory facilities
+ 55,132
recorded in the last 24 hours



27,972,212
doses administered by
commonwealth facilities
+ 60,147
recorded in the last 24 hours

26,787,196 total vaccine doses
administered in primary care settings
1,185,016 total vaccine doses
administered in aged care and disability
settings

NSW	Jurisdictions	Commonwealth
Cumulative	4,637,834	10,058,521
Daily increase	11,579	15,888

VIC	Jurisdictions	Commonwealth
Cumulative	5,191,669	6,940,330
Daily increase	11,964	17,795

QLD	Jurisdictions	Commonwealth
Cumulative	3,449,233	5,498,209
Daily increase	10,576	12,624

WA	Jurisdictions	Commonwealth
Cumulative	1,990,100	2,568,776
Daily increase	6,708	6,999

TAS	Jurisdictions	Commonwealth
Cumulative	524,640	494,422
Daily increase	3,556	2,163

SA	Jurisdictions	Commonwealth
Cumulative	1,469,987	1,673,756
Daily increase	7,904	2,748

ACT	Jurisdictions	Commonwealth
Cumulative	568,427	550,828
Daily increase	2,029	1,869

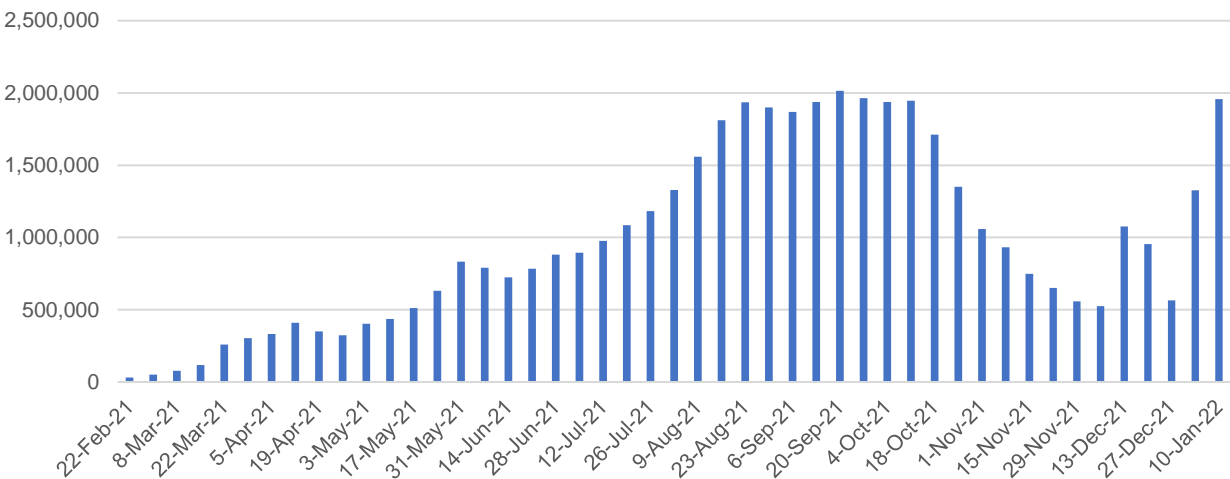
NT	Jurisdictions	Commonwealth
Cumulative	265,190	187,370
Daily increase	816	61

Vaccine milestone charts

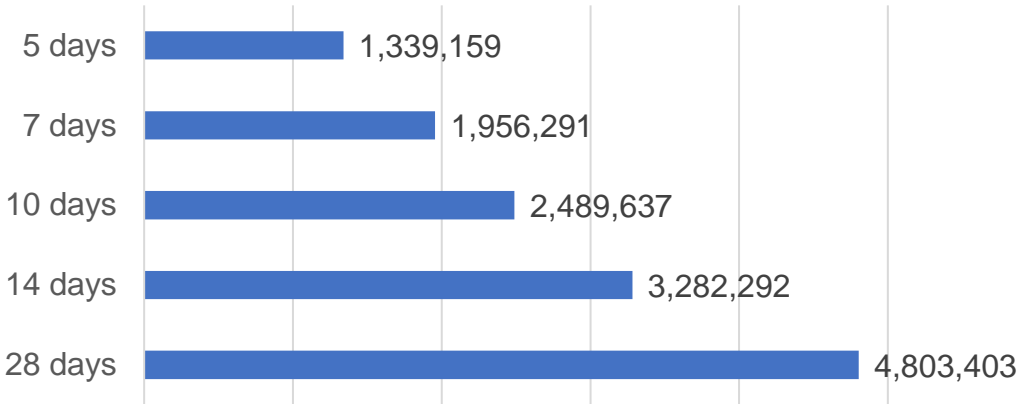
Data as at:
16 Jan 2022

Australia's COVID-19
Vaccine Roadmap

Doses Administered by Week

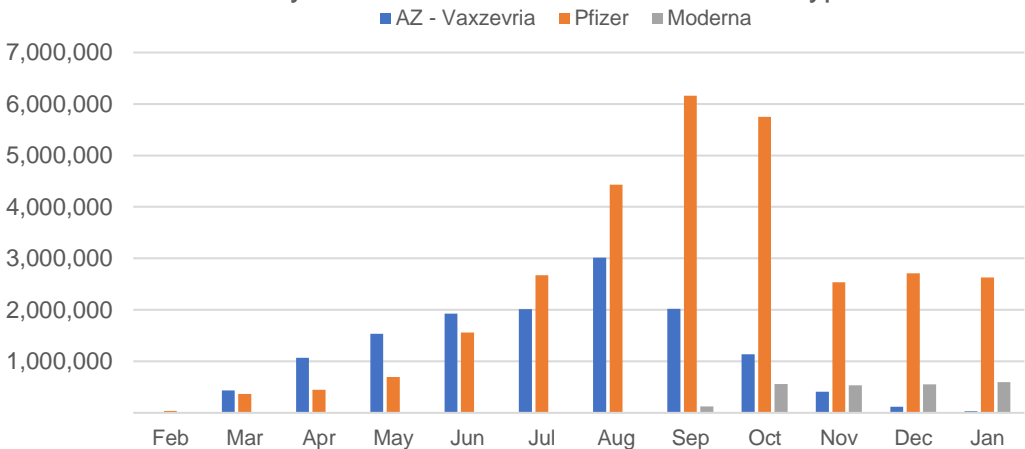


Doses Reported

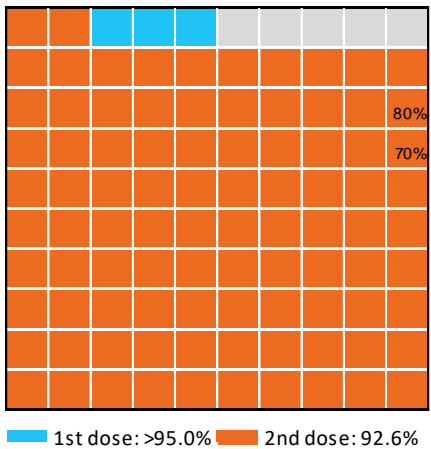


*Sourced from the Australian Immunisation Register.

Doses by administration month and vaccine type



Eligible population percentage coverage



*Each square represents 1% of the national population.
Squares are filled as milestones are achieved.

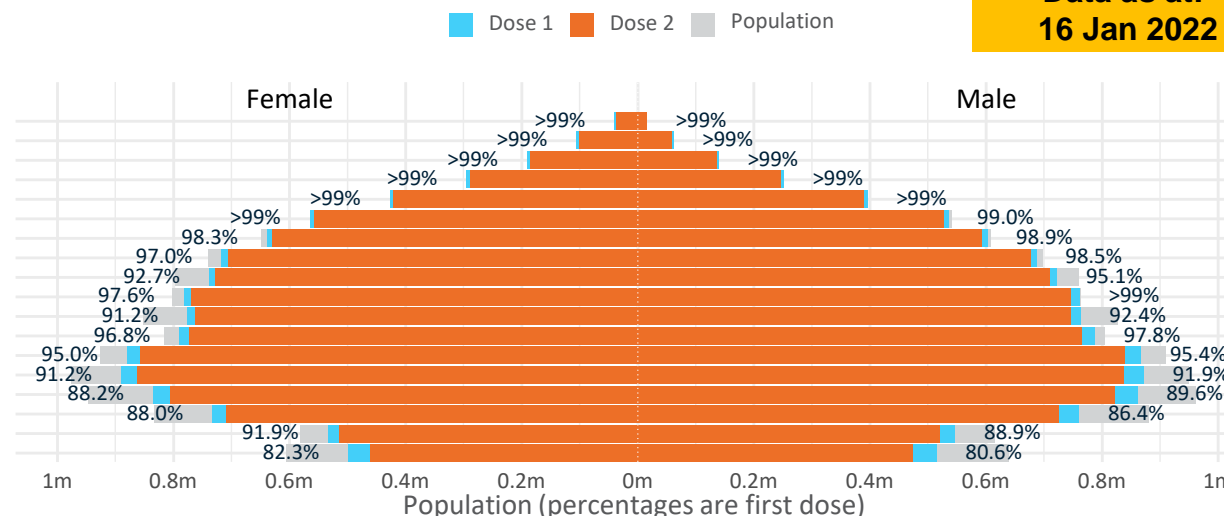
Doses by age and sex

First and second doses by age and sex

Australia's COVID-19
Vaccine Roadmap

Data as at:
16 Jan 2022

Age	Dose 1	Dose 2
95+	55,718 (>99%)	51,969 (98.2%)
90-94	167,058 (>99%)	160,037 (>99%)
85-89	329,917 (>99%)	320,297 (>99%)
80-84	546,363 (>99%)	535,791 (>99%)
75-79	822,870 (>99%)	810,858 (>99%)
70-74	1,100,579 (>99%)	1,085,535 (98.2%)
65-69	1,241,783 (98.7%)	1,223,467 (97.2%)
60-64	1,405,395 (97.8%)	1,383,209 (96.3%)
55-59	1,461,889 (94.0%)	1,437,890 (92.4%)
50-54	1,544,773 (98.7%)	1,516,564 (96.9%)
45-49	1,540,097 (91.9%)	1,507,899 (89.9%)
40-44	1,579,184 (97.5%)	1,539,788 (95.0%)
35-39	1,751,386 (95.4%)	1,699,420 (92.6%)
30-34	1,769,818 (92.0%)	1,705,497 (88.7%)
25-29	1,705,502 (89.5%)	1,635,433 (85.8%)
20-24	1,499,106 (87.5%)	1,438,249 (84.0%)
16-19	1,081,225 (90.4%)	1,035,290 (86.6%)
12-15	1,013,175 (81.4%)	933,542 (75.0%)

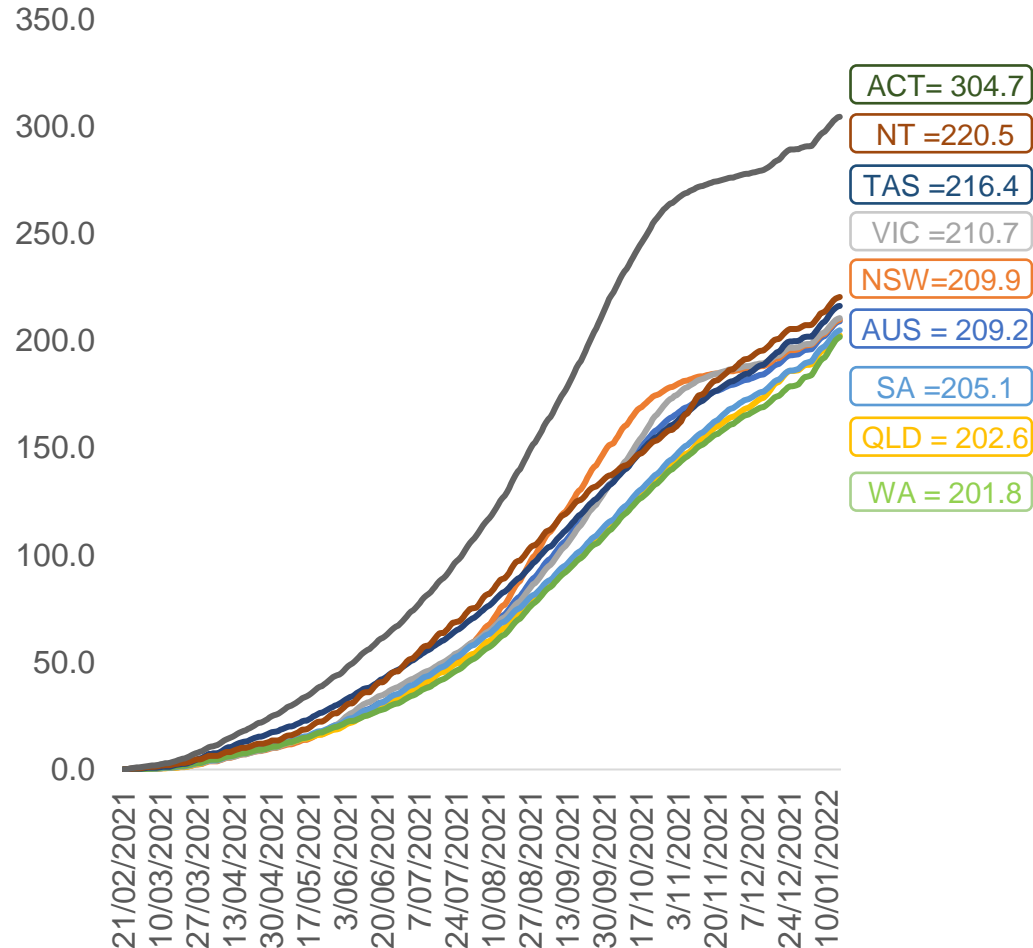


	AUS	ACT	NSW	NT	QLD	SA	TAS	VIC	WA
16 and over - dose 1	19,602,663	347,771	6,251,173	171,516	3,766,754	1,340,731	434,476	5,083,425	1,990,082
16 and over - dose 2	19,087,193	343,144	6,158,519	163,992	3,648,828	1,292,068	419,005	5,011,618	1,853,562
16 and over - population	20,619,959*	344,037	6,565,651	190,571	4,112,707	1,440,400	440,172	5,407,574	2,114,978
16 and over % with dose 1	95.07%	>99%	95.21%	90.00%	91.59%	93.08%	98.71%	94.01%	94.09%
16 and over % with dose 2	92.57%	>99%	93.80%	86.05%	88.72%	89.70%	95.19%	92.68%	87.64%
5 to 11 - dose 1	322,619	10,639	99,780	3,391	67,155	20,114	9,324	88,041	22,747
5 to 11 - population	2,276,638	39,789	716,460	24,750	478,731	148,816	45,033	578,499	244,154
5 to 11 % with dose 1	14.17%	26.74%	13.93%	13.70%	14.03%	13.52%	20.70%	15.22%	9.32%
12 to 15 - dose 1	1,013,175	19,783	320,475	10,334	197,946	64,912	21,552	271,971	97,907
12 to 15 - dose 2	933,542	19,149	305,535	8,981	177,773	58,033	19,488	259,674	77,912
12 to 15 - population	1,243,990	19,693	390,330	13,060	270,146	82,747	26,308	308,611	132,869
12 to 15 % with dose 1	81.45%	>99%	82.10%	79.13%	73.27%	78.45%	81.92%	88.13%	73.69%
12 to 15 % with dose 2	75.04%	97.24%	78.28%	68.77%	65.81%	70.13%	74.08%	84.14%	58.64%

*National population will not equal sum of listed jurisdictions due to a small number of people counted in national population residing in some 'other' territories. Sum of state doses will not add to national total as some records are unable to be geocoded to a State or Territory.
Doses sourced from Australian Immunisation Register, population from ABS ERP June 2020

Vaccinations by location

Cumulative total doses administered vs eligible state populations*

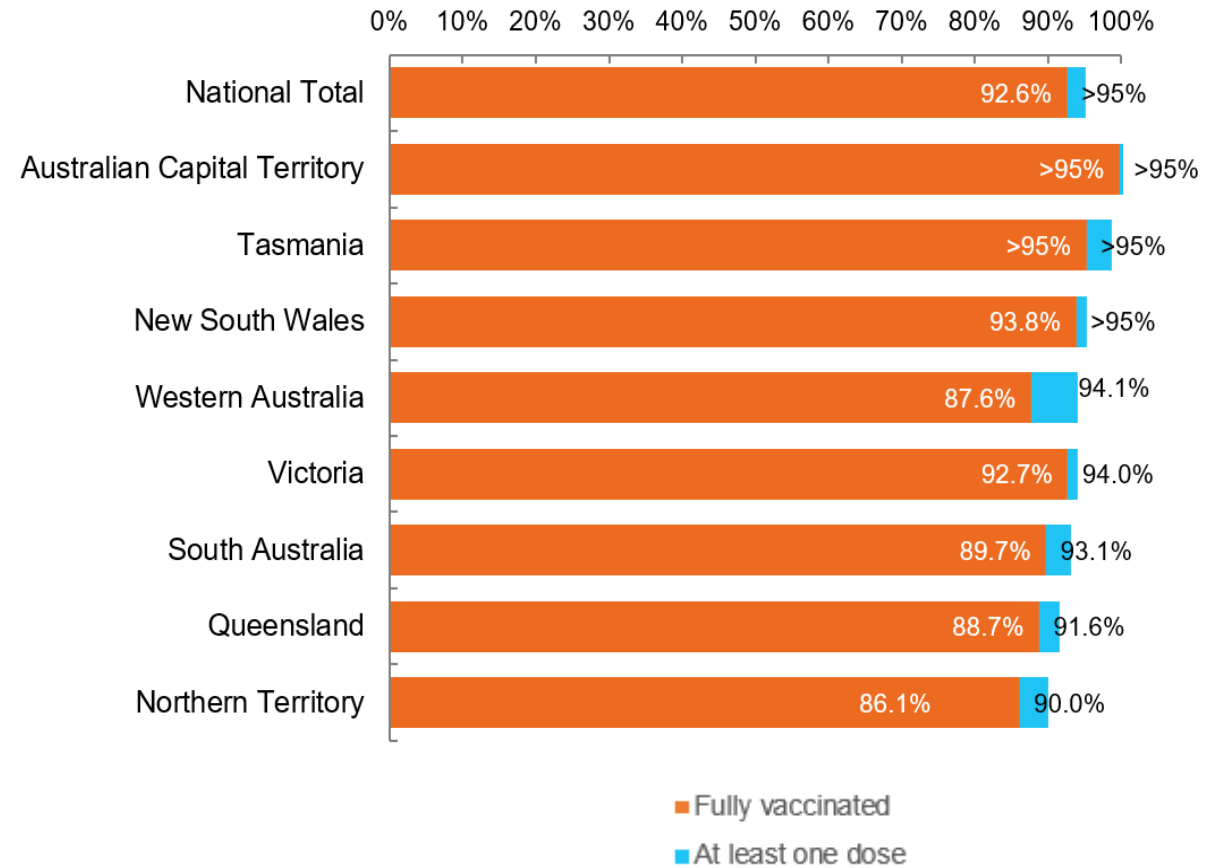


*Not an indication of percentage vaccinated, numbers will exceed 100 due to multiple doses required per person of the population. All doses are included for those aged 12 and above, and are based on vaccination provider location.

Data as at:
16 Jan 2022

Australia's COVID-19
Vaccine Roadmap

First and Second Doses by state of residence



Aboriginal and Torres Strait Islander peoples

Number of people vaccinated

Data as at:
11 Jan 2022
Updated weekly

Australia's COVID-19
Vaccine Roadmap



419,832

people over the age of 16
have had at least one dose

80.0%

of people over the age of 16
have had at least one dose



384,519

people over the age of 16
are fully vaccinated

73.2%

of people over the age of 16 are
fully vaccinated



**43,476
(60.9%)**

people aged 12-15 years
have had at least one dose

173 Aboriginal community controlled health services (ACCHS)

0#	50	27	41	12	3	21	19
ACT	NSW	NT	QLD	SA	TAS	VIC	WA

Medicare Address State ^{##}	Individuals Dose 1	Individuals Dose 1 %	Individuals Dose 2	Individuals Dose 2 %
Australian Capital Territory	4,932	90.9%	4,785	88.2%
New South Wales	136,926	86.3%	133,074	83.9%
Northern Territory	40,245	85.4%	35,848	76.1%
Queensland	110,207	77.1%	99,119	69.3%
South Australia	18,945	74.8%	16,765	66.2%
Tasmania	14,433	85.8%	13,563	80.6%
Victoria	35,493	88.7%	34,412	86.0%
Western Australia	44,223	69.5%	35,291	55.5%
Unknown/Other Territories	14,428	57.5%	11,662	46.5%
Totals	419,832	80.0%	384,519	73.2%

Source: Australian Immunisation Register

*Identifying as Aboriginal and Torres Strait Islander is optional and the estimated population may be under reported.

**Includes all Aboriginal and Torres Strait Islander peoples who have received a vaccination, not limited to those administered in an ACCHS setting

#ACCHS in the ACT are currently operating as a Commonwealth Vaccine Clinics so not included to avoid double counting

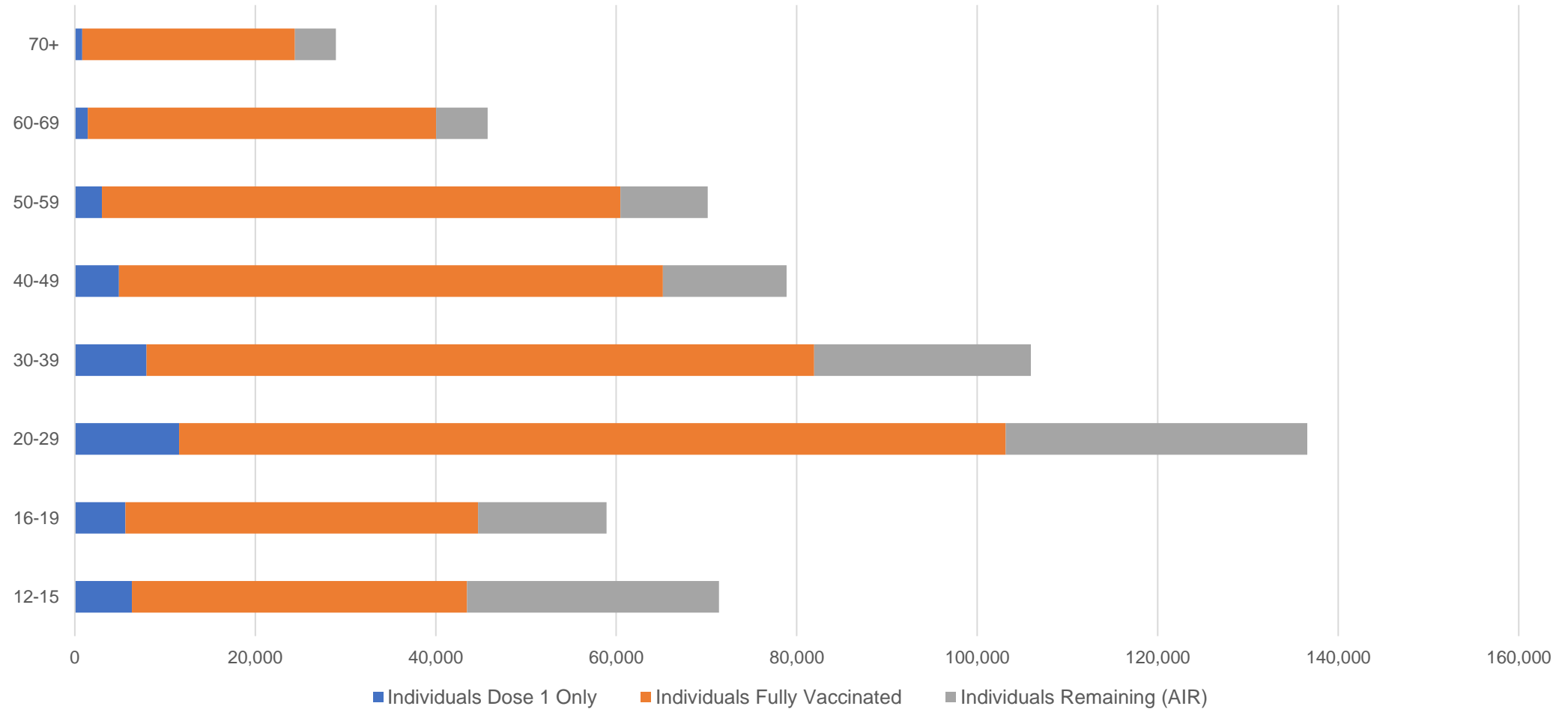
##The above table includes all identified Aboriginal and Torres Strait Islander people who are aged 16 and above by their state of residence.

Aboriginal and Torres Strait Islander peoples

Number of people vaccinated by age

Data as at:
11 Jan 2022
Updated weekly

Australia's COVID-19
Vaccine Roadmap



Source: Australian Immunisation Register

Commonwealth primary care

Data as at:
16 Jan 2022

Australia's COVID-19
Vaccine Roadmap



Primary care vaccine administration sites

5,708	137	173	3,485
GPs	CVCs	ACCHS	Pharmacies



26,787,196 total vaccine doses administered
primary care settings as at 16 January
+ 59,606 recorded in the last 24 hours

Primary care vaccinations by provider type

	Doses administered	Daily increase	7 day increase
General Practice* includes other Commonwealth	22,731,958	45,666	938,413
Pharmacy	4,055,238	13,940	449,604

NSW
9,538,426
(+14,868 daily increase)

VIC
6,671,103
(+16,902 daily increase)

QLD
5,250,373
(+10,744 daily increase)

WA
2,461,801
(+5,999 daily increase)

TAS
477,882
(+1,923 daily increase)

SA
1,601,453
(+2,466 daily increase)

ACT
422,708
(+1,553 daily increase)

NT
167,224
(-80[#] daily increase)

196,226

doses administered to persons
residing in other territories or with
missing residential information

*General practice includes Commonwealth Vaccination Clinics, Aboriginal Community Health Centres, Royal Flying Doctor Service and other Commonwealth vaccination facilities

Numbers are calculated as difference in daily cumulative reported numbers to allow for historical corrections in all data sources. This can occasionally result in negative numbers, such as for NT, where historical details about doses have been updated.

Source: Australian Immunisation Register

Data as at:
16 Jan 2022

Commonwealth aged care and disability doses administered



1,185,016 (+ 541 last 24 hours)

Total vaccine doses administered in aged care and disability facilities as at 16 January

Number of doses administered as part of the Commonwealth aged and disability care rollout

NSW
540,756
(-21[#] daily increase)

VIC
221,013
(+135 daily increase)

QLD
185,340
(+3 daily increase)

WA
86,686
(+116 daily increase)

TAS
21,169
(-6[#] daily increase)

SA
78,805
(+68 daily increase)

ACT
15,581
(+52 daily increase)

NT
6,651
(+1 daily increase)

29,015

doses administered to persons residing in other territories or with missing residential information

Source: Australian Immunisation Register

*Sourced from the Australian Immunisation Register. Includes all persons vaccinated at participating residential aged care, disability and related industry settings.

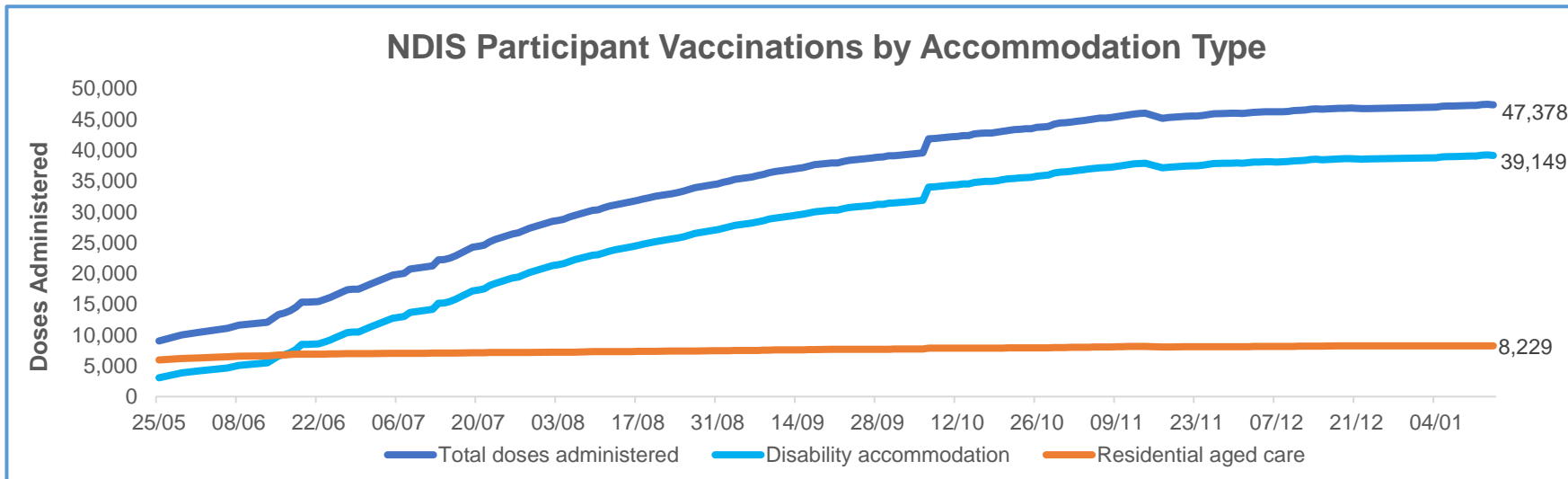
**State level breakdown indicates the residential location and may not align to the state in which the vaccination occurred.

Numbers are calculated as difference in daily cumulative reported numbers to allow for historical corrections in all data sources. This can occasionally result in negative numbers, such as for NSW and TAS, where historical details about doses have been updated."

Data as at:
14 Jan 2022*

Vaccination rate of people with disability and the disability workforce

Phase 1a – People with disability living in shared accommodation



	Total people with at least one dose	People fully vaccinated	Total number of individuals in cohort	Total doses administered	% People with at least one dose	% People fully vaccinated
NDIS participants living in shared accommodation **	24,015	23,363	27,603	47,378	87.0%	84.6%
NDIS screened workers ***	237,431	232,445	267,670	469,876	88.7%	86.8%



* Updates are available Monday to Friday on participants, and bi-weekly for workers, numbers may be up to four days old.

** Shared accommodation means two or more people with disability living in shared residential accommodation and NDIS participants living in Residential Aged Care accommodation as per the eligibility criteria of Phase 1a. The number of residents changes over time and refinement of methodology can lead to corrections in totals.

*** Total number of workers within the NDIS Commission Worker Screening database who have ever been successfully screened and linked to an NDIS registered provider or participant.

Source: Linkage between National Disability Insurance Agency data, NDIS Quality and Safeguards Commission data and the Australian Immunisation Register.

Residential aged care vaccination rollout

Australia's COVID-19
Vaccine Roadmap

Data as at:
16 Jan 2022

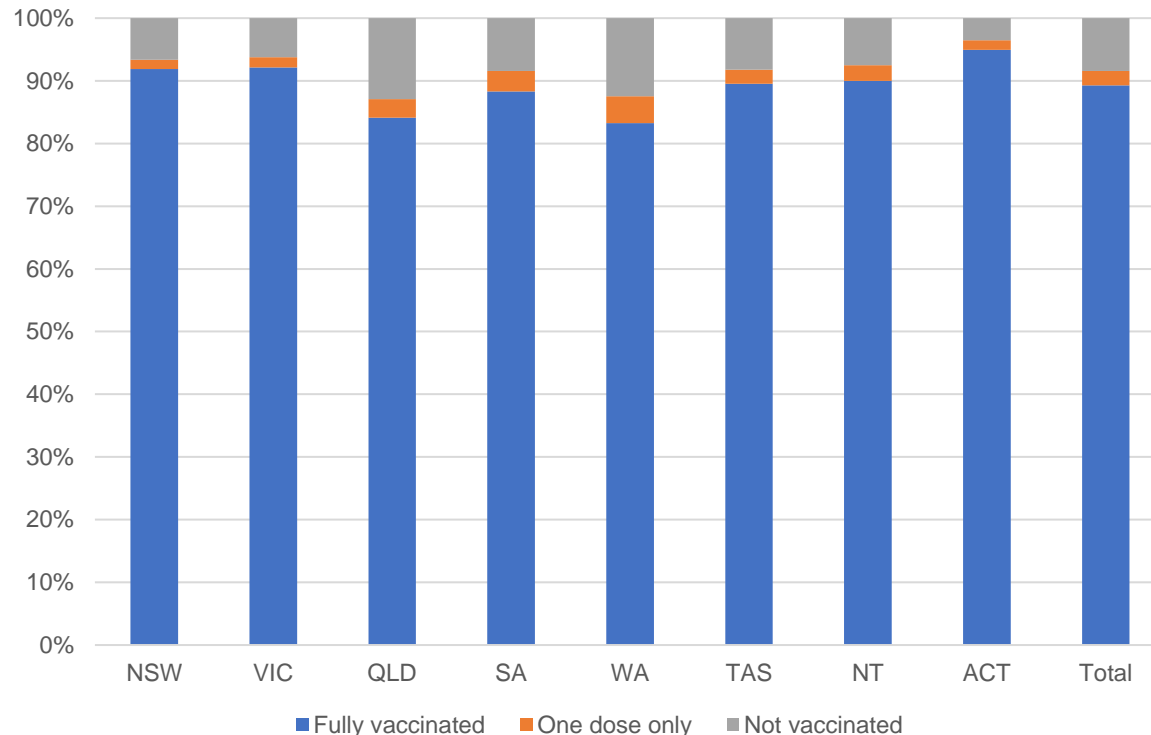
Residential aged care facilities status

100%
Commonwealth facilities visited (2,590 planned sites)

171,283
People fully vaccinated

175,615
People with at least one dose

Aged care resident vaccinations



Aged care worker vaccinations

Jurisdictions	Total workers with at least one dose	Workers fully vaccinated	% Workers with at least one dose	% Workers fully vaccinated
NSW	78,874	78,842	99.0%	98.9%
VIC	71,466	71,466	99.8%	99.8%
QLD	48,711	48,692	99.7%	99.7%
SA	27,607	27,543	99.8%	99.6%
WA	23,877	23,801	99.7%	99.4%
TAS	7,608	7,593	100.0%	99.8%
NT	834	833	100.0%	99.9%
ACT	2,890	2,890	95.9%	95.9%
Total	261,867	261,660	99.5%	99.4%

Source: My Aged Care Portal vaccination progress

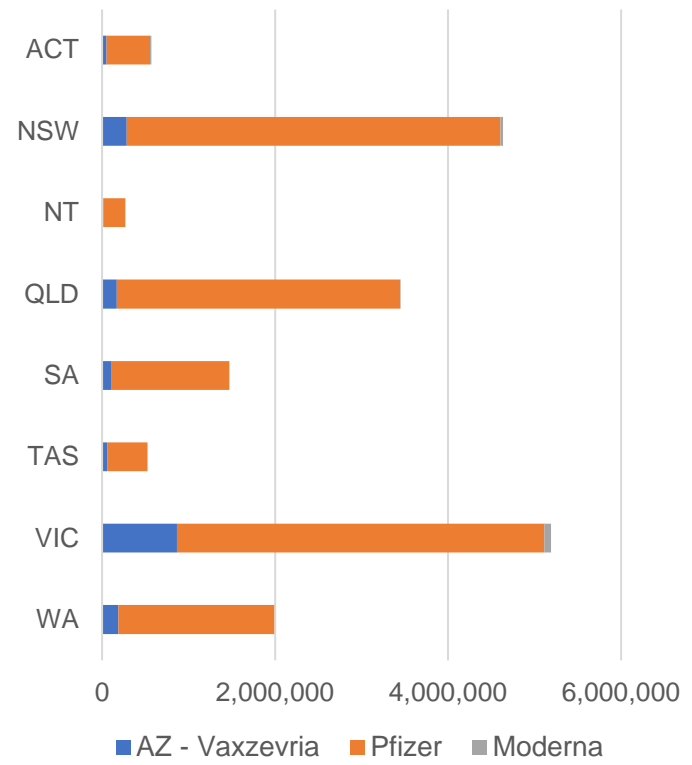
*Status updates are provided by facilities at least once per week. Reporting is updated Monday to Friday to encompass different facility updates being made on different days.

Data is sourced directly from Aged Care Service Providers and is not drawn or closely aligned with data from AIR due to inconsistencies and potential lags in uploading of records.

Data as at:
16 Jan 2022

Jurisdiction administered

Total vaccine doses administered in State and Territory clinics as at 16 January



18,097,080 total vaccine doses administered in State and Territory clinics as at 16 January
+ 55,132 recorded in the last 24 hours
+ 557,530 recorded in the last 7 days

NSW
4,637,834
 (+11,579 daily increase)

VIC
5,191,669
 (+11,964 daily increase)

QLD
3,449,233
 (+10,576 daily increase)

WA
1,990,100
 (+6,708 daily increase)

TAS
524,640
 (+3,556 daily increase)

SA
1,469,987
 (+7,904 daily increase)

ACT
568,427
 (+2,029 daily increase)

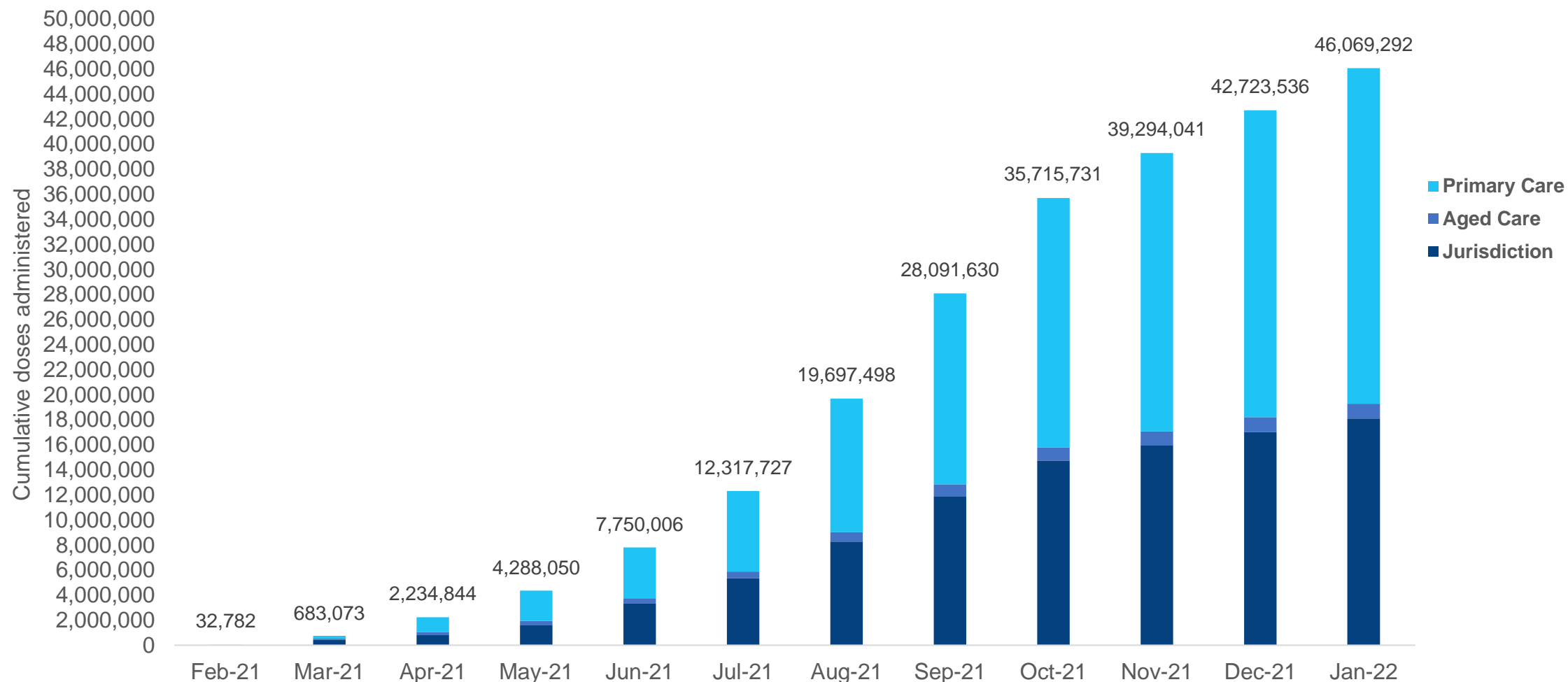
NT
265,190
 (+816 daily increase)

*Sourced from the Australian Immunisation Register. Numbers are calculated as difference in daily cumulative reported numbers to allow for historical corrections.

Source: Australian Immunisation Register

Cumulative doses administered by channel

Data as at:
16 Jan 2022



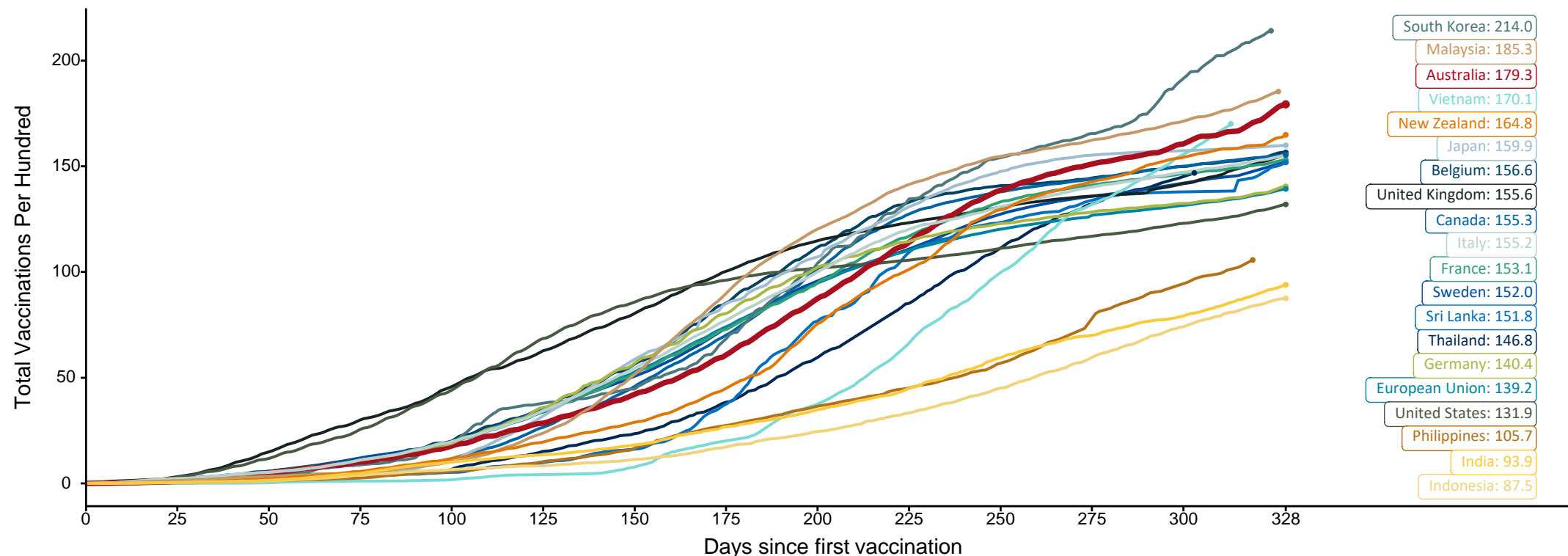
Source: Australian Immunisation Register

Doses at equivalent stages of rollout (Day 328)

Data as at:
16 Jan 2022

The x-axis is truncated at the length of Australia's vaccination program. Countries with intermittent reporting have had their doses per 100 imputed to Australia's current stage of rollout. Israel excluded as it is beyond scale of the graph

Cumulative doses administered (16 Jan): **46,069,292**

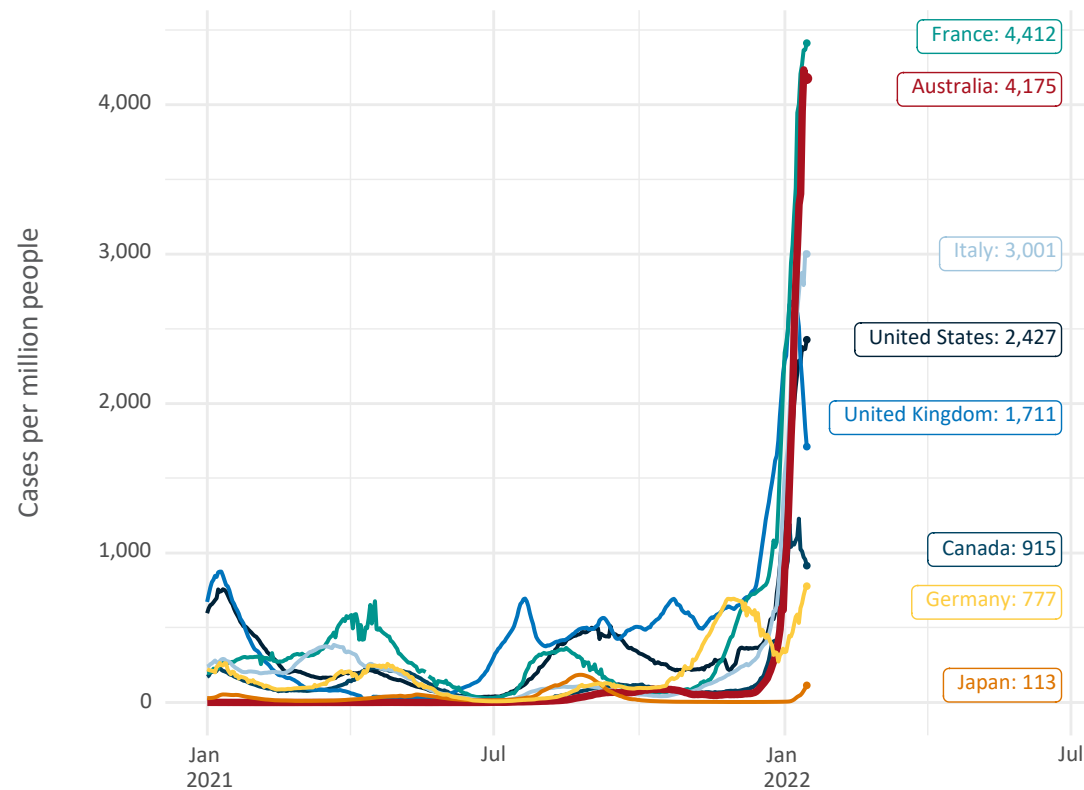


Note: From 15 September 2021, data for Australia includes all doses administered to people 12 and over. Prior to 15 September, data was for 16 and over
Due to data revisions, Singapore has been removed from the chart
Source: Department of Health (Australia), Our World in Data (international)
Latest data: 16 January

Data as at:
16 Jan 2022

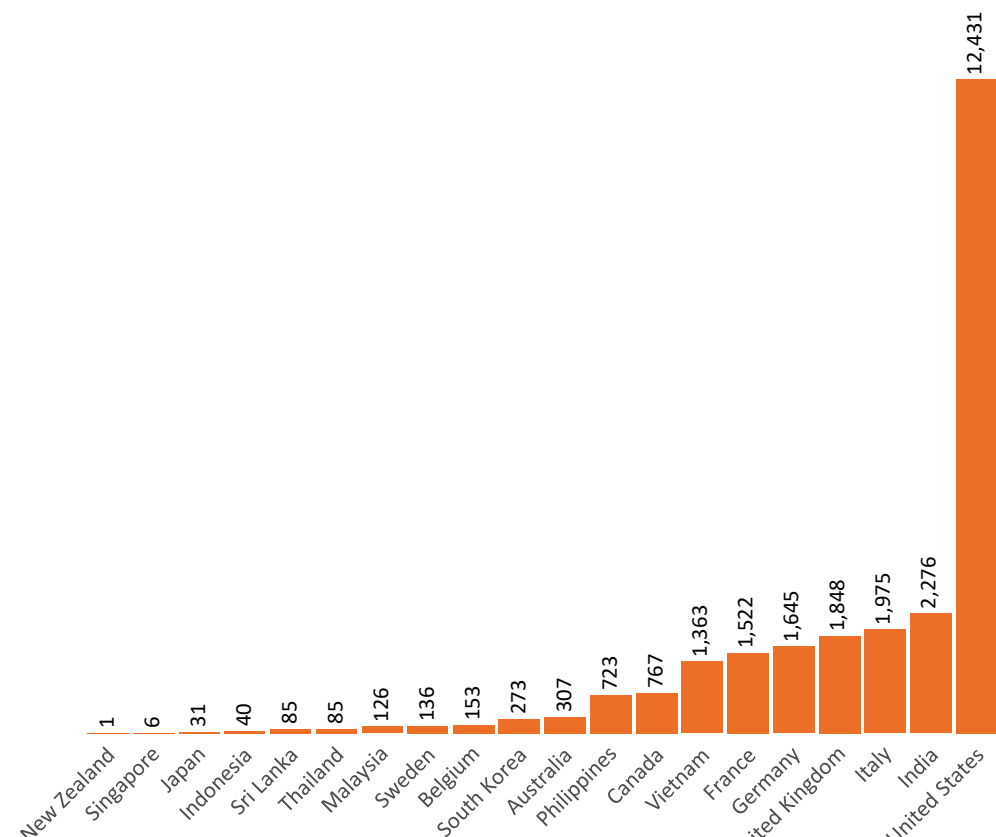
International data – COVID-19

New daily cases per million in 2021, Australia and G7 countries
Smoothed - 7 day average



Source: OWID
Data downloaded: 17 Jan 2022 08:00
Latest data: 15 Jan 2022

COVID-19 deaths in past 7 days - Australia and select countries

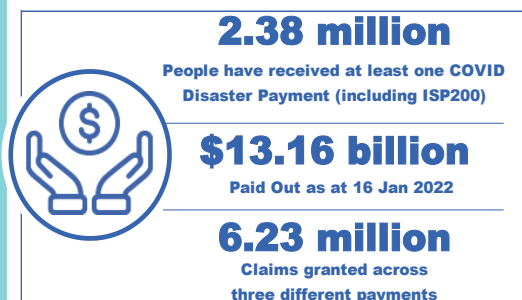


Source: OWID
Data downloaded: 17 Jan 2022 08:00
Latest data: 15 Jan 2022

Pandemic Response Payments

Australia's COVID-19
Vaccine Roadmap

Data as at midnight:
16 Jan 2022
Updated weekly



COVID Disaster Payment:	5.89 million claims received - 2.19 million individuals paid a total of \$12.59 billion.
\$200 Income Support Payment:	353,000 claims received - 183,000 individuals paid a total of \$268.91 million.
Pandemic Leave Disaster Payment:	431,000 claims received - 217,000 individuals paid a total of \$295.8 million.



COVID Disaster Payment

assisting during a lockdown
event in a Commonwealth
hotspot.

Income Support Payment \$200

for income support
recipients who lost at
least 8 hours of work.

Pandemic Leave Disaster Payment

for those who have to
self-isolate, quarantine
or care.

For more information visit:
servicesaustralia.gov.au

COVID-19 DISASTER PAYMENTS

Victoria

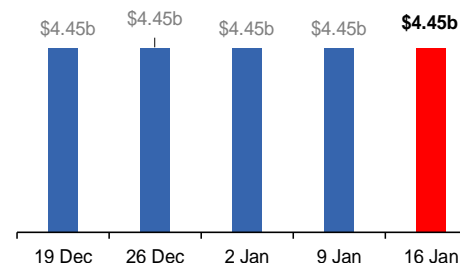
Lockdown (#6) from 6 Aug to 28 Oct
Claiming period ended 9 Dec

**745,000 people have received at least
one COVID Disaster Payment.**

\$4.45b paid out as at 16 Jan 2022.

**\$17,000 paid in initial and reoccurring
payments in the week ending
16 Jan 2022.**

Cumulative payments made by State since
activation on 8 Jun 2021.



Northern Territory

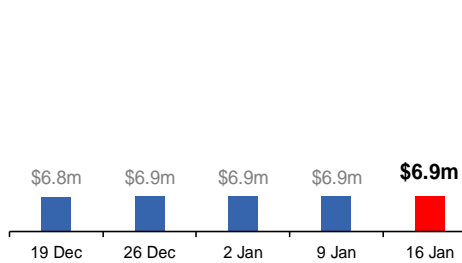
Lockdown (#3) from 16 Nov to 22 Nov
Claiming period ends 27 Dec

**7,500 people have received at least one
COVID Disaster Payment.**

\$6.9m paid out as at 16 Jan 2022.

**\$3,000 paid in initial payments in the
week ending 16 Jan 2022.**

Cumulative payments made by Territory since
activation on 25 Aug 2021.



New South Wales

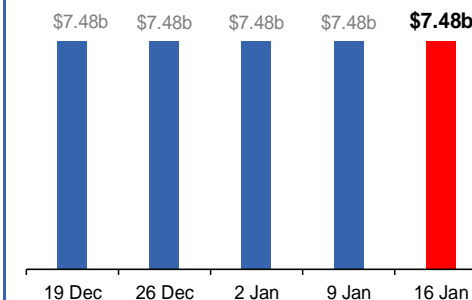
Lockdown from 24 Jun to 10 Oct
Claiming period ended 27 Nov

**1.08m people have received at least
one COVID Disaster Payment.**

\$7.48b paid out as at 16 Jan 2022.

**\$5,000 paid in initial and reoccurring
payments in the week ending
16 Jan 2022.**

Cumulative payments made by State since
activation on 1 Jul 2021.



Australian Capital Territory

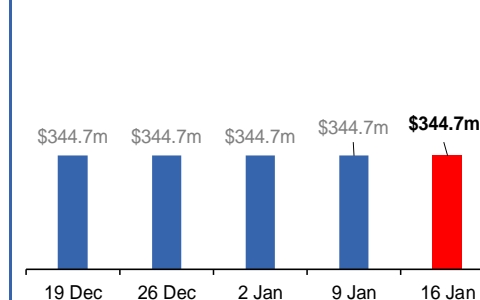
Lockdown from 12 Aug to 14 Oct
Claiming period ended 25 Nov

**65,000 people have received at least
one COVID Disaster Payment.**

\$344.7m paid out as at 16 Jan 2022.

**\$0 paid in initial and reoccurring
payments in the week ending
16 Jan 2022.**

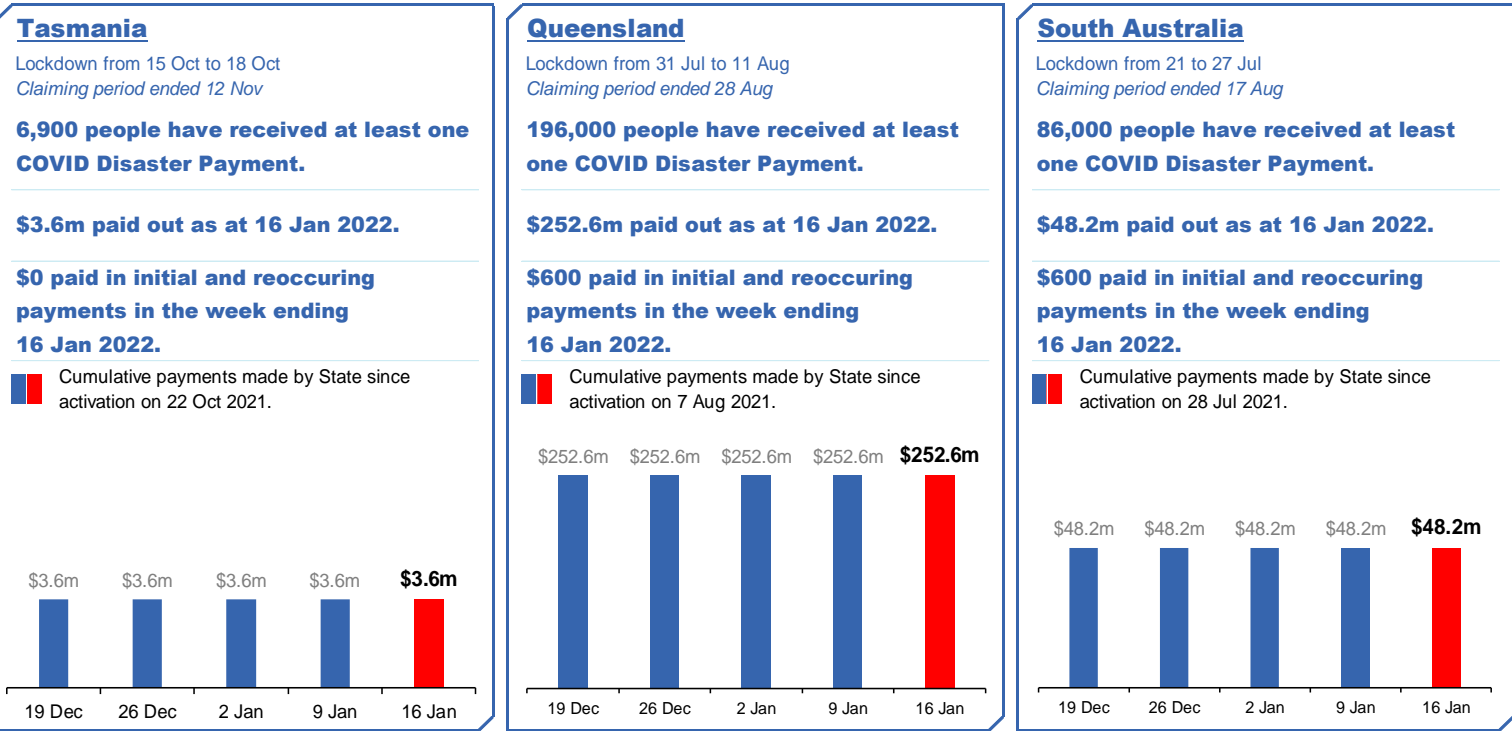
Cumulative payments made by Territory since
activation on 20 Aug 2021.



Pandemic Response Payments (continued)

Data as at midnight:
16 Jan 2022
Updated weekly

COVID-19 DISASTER PAYMENTS



Administration and Utilisation

Doses as at 17 January 2022

	Ordered	Available	Administered	Available minus Administered	Estimated Dose Utilisation %
	Up to 16/01/22	Delivered up to 09/01/22 including redistributions	Up to 16/01/22		(see note)
NSW	5,889,120	5,516,690	4,637,834	878,856	94%
VIC	6,097,654	5,818,454	5,191,669	626,785	99%
QLD	4,337,908	3,915,398	3,449,233	466,165	98%
WA	2,122,468	1,968,708	1,990,100	0	Fully utilised
SA	1,775,680	1,656,970	1,469,987	186,983	99%
TAS	559,280	512,030	524,640	0	Fully utilised
NT	336,634	321,176	265,190	55,986	93%
ACT	516,956	509,956	568,427	0	Fully utilised
Jurisdiction delivered total	21,635,700	20,219,382	18,097,080	2,122,302	Fully utilised
Commonwealth Aged Care & Disability	1,238,286	1,195,698	1,185,016	10,682	N/A
Commonwealth Primary Care & Other	40,288,280	36,701,292	26,787,196	9,914,096	83%
Total	63,162,266	58,116,372	46,069,292	12,047,080	89%

About this data

- Ordered – Total doses delivered to sites. Based on logistics provider data. This figure includes doses allocated for administration in the coming week.
- Available – total doses that could have been administered to date, less doses re-distributed from States & Territories to Primary Care or Aged Care & Disability (i.e. does not include those deliveries recently received, and intended for use in the coming week).
- Administered – Doses administered as at 16 January 2022.
- The dose utilisation is calculated based on the total doses administered and a small % wastage in line with international standards in relation to total available doses.
- For Aged Care & Disability, the doses available for administration is for the full period (up to 16 January 2022).
- Aged Care & Disability utilisation is not provided as the in-reach rollout is demand-based, with vaccines ordered based on resident numbers.