



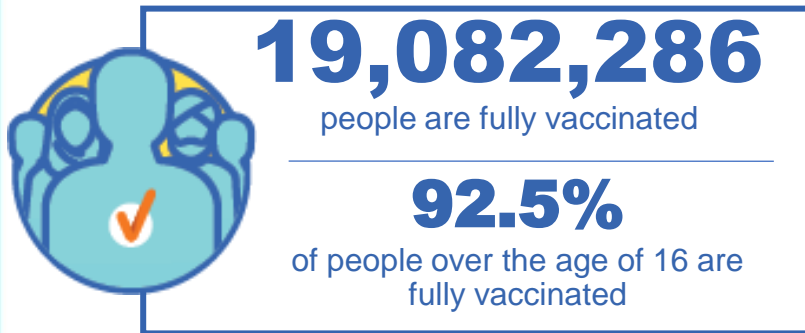
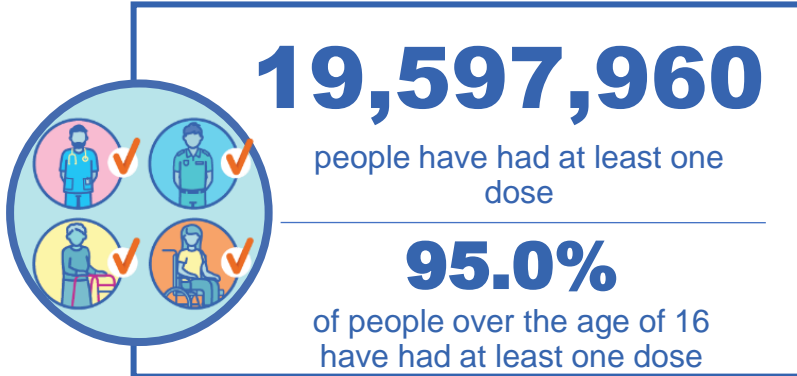
Australian Government
Operation COVID Shield

COVID-19 Vaccine Roll-out

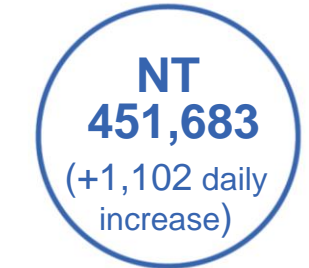
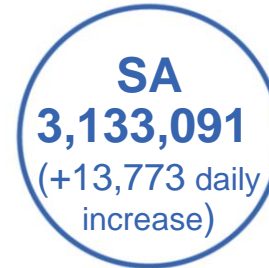
16 January 2022

Data as at:
15 Jan 2022

Total vaccine doses



45,954,013 total vaccine doses administered nationally as at 15 January
+191,252 recorded in the last 24 hours



*Administration state breakdown indicates state in which a vaccine was administered

**Overall dose count includes instances of more than two doses per person in a small number of cases.

Booster Vaccinations

Data as at:
15 Jan 2022



4,998,093 total people over the age of 18 years old
who have received more than two doses nationally

+133,855 people who have received more than two doses
nationally in the last 24 hours

NSW
1,667,819
(44,221 daily
increase)

VIC
1,281,561
(36,154 daily
increase)

QLD
954,998
(21,005 daily
increase)

WA
447,693
(15,860 daily
increase)

TAS
111,313
(2,287 daily
increase)

SA
362,173
(10,068 daily
increase)

ACT
102,922
(2,669 daily
increase)

NT
42,449
(783 daily
increase)

27,165

doses administered to persons
residing in other territories or with
missing residential information

Source: Australian Immunisation Register

Data as at:
15 Jan 2022

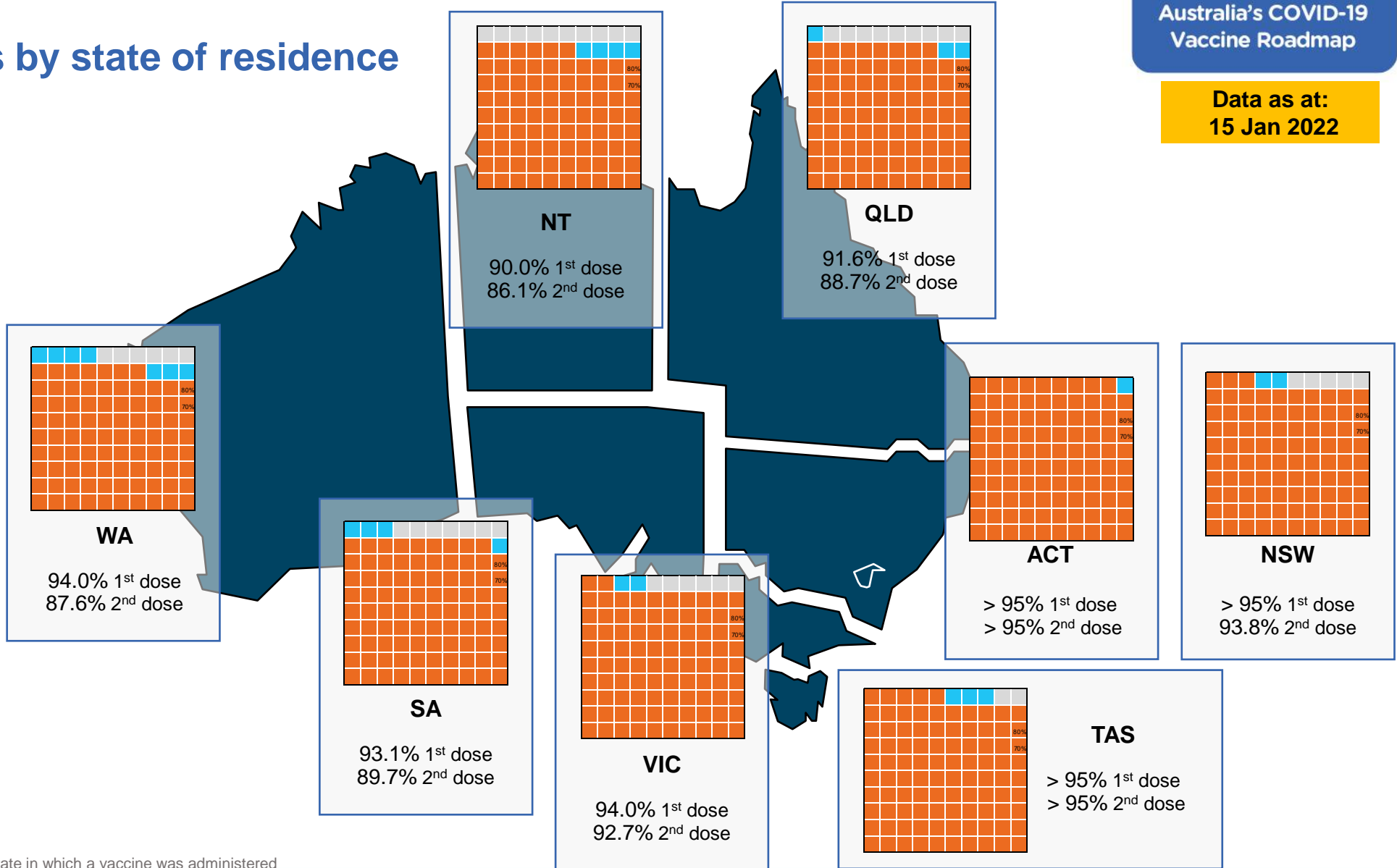
Vaccinations by state of residence

First doses

Age	Today	4 weeks ago	8 weeks ago
16+	95.0%	94.0%	91.9%
50+	>95%	>95%	>95%
70+	>95%	>95%	>95%

Fully vaccinated

Age	Today	4 weeks ago	8 weeks ago
16+	92.5%	90.7%	85.7%
50+	>95%	>95%	93.1%
70+	>95%	>95%	>95%



*Residential state may differ from the state in which a vaccine was administered

Commonwealth and Jurisdiction vaccine doses administered

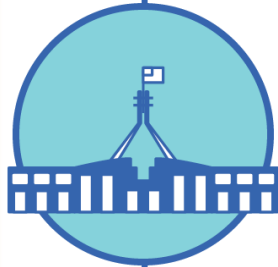
Data as at:
15 Jan 2022



45,954,013 total vaccine doses administered nationally as at 15 January
+ **191,252** recorded in the last 24 hours



18,041,948 doses administered by state and territory facilities
+ **75,816** recorded in the last 24 hours



27,912,065 doses administered by commonwealth facilities
+ **115,436** recorded in the last 24 hours
26,727,590 total vaccine doses administered in primary care settings
1,184,475 total vaccine doses administered in aged care and disability settings

NSW	Jurisdictions	Commonwealth
Cumulative	4,626,255	10,042,633
Daily increase	19,483	38,700

VIC	Jurisdictions	Commonwealth
Cumulative	5,179,705	6,922,535
Daily increase	18,509	30,155

QLD	Jurisdictions	Commonwealth
Cumulative	3,438,657	5,485,585
Daily increase	14,737	19,430

WA	Jurisdictions	Commonwealth
Cumulative	1,983,392	2,561,777
Daily increase	9,808	16,118

TAS	Jurisdictions	Commonwealth
Cumulative	521,084	492,259
Daily increase	2,615	1,989

SA	Jurisdictions	Commonwealth
Cumulative	1,462,083	1,671,008
Daily increase	7,703	6,070

ACT	Jurisdictions	Commonwealth
Cumulative	566,398	548,959
Daily increase	1,958	2,875

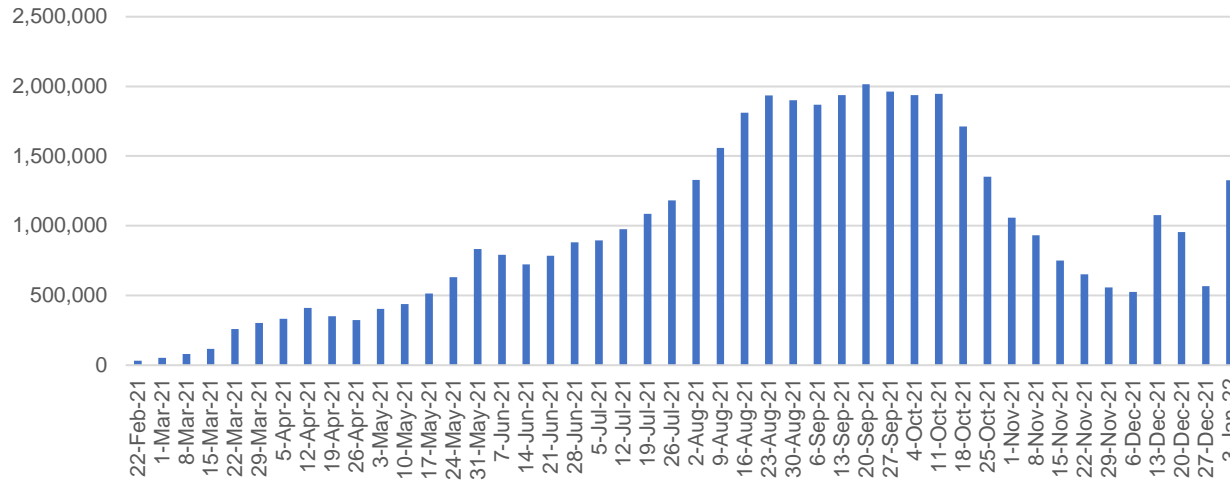
NT	Jurisdictions	Commonwealth
Cumulative	264,374	187,309
Daily increase	1,003	99

Vaccine milestone charts

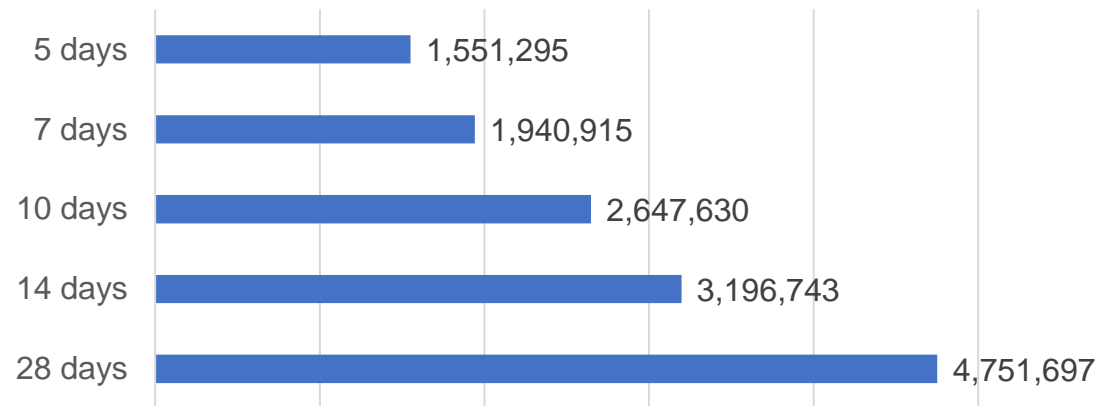
Data as at:
15 Jan 2022

Australia's COVID-19
Vaccine Roadmap

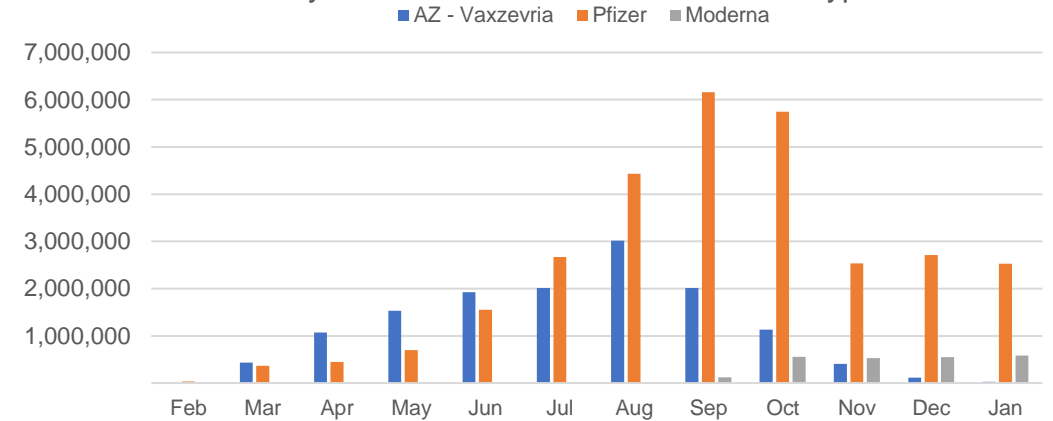
Doses Administered by Week



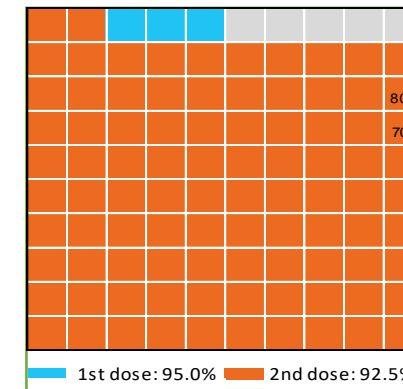
Doses Reported



Doses by administration month and vaccine type



Eligible population percentage coverage



*Each square represents 1% of the national population. Squares are filled as milestones are achieved.

*Sourced from the Australian Immunisation Register.

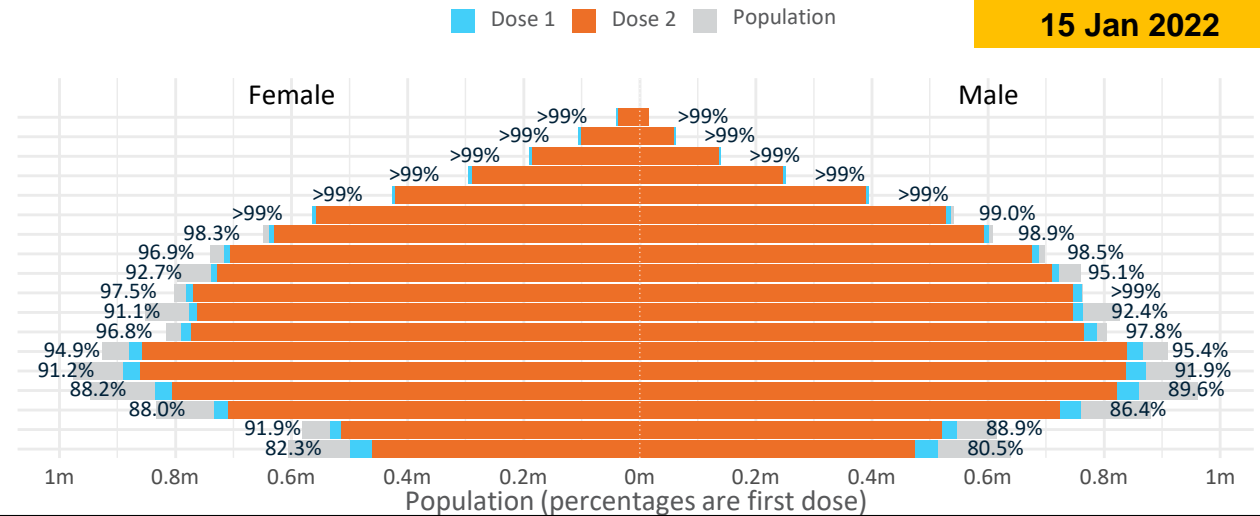
Doses by age and sex

First and second doses by age and sex

	16+	50+	12-15	5-11
Dose 1	95.04% (19,597,960 doses / 20,619,959 people)	>99% (8,674,630 doses / 8,749,703 people)	81.40% (1,012,626 doses / 1,243,990 people)	12.96% (295,106 doses / 2,276,638 people)
Dose 2	92.54% (19,082,286 doses / 20,619,959 people)	97.42% (8,524,131 doses / 8,749,703 people)	75.05% (933,566 doses / 1,243,990 people)	

**Data as at:
15 Jan 2022**

Age	Dose 1	Dose 2
95+	55,664 (>99%)	51,924 (98.1%)
90-94	166,969 (>99%)	159,961 (>99%)
85-89	329,775 (>99%)	320,156 (>99%)
80-84	546,239 (>99%)	535,666 (>99%)
75-79	822,504 (>99%)	810,495 (>99%)
70-74	1,100,482 (>99%)	1,085,483 (98.2%)
65-69	1,241,582 (98.7%)	1,223,329 (97.2%)
60-64	1,405,074 (97.8%)	1,382,949 (96.3%)
55-59	1,461,788 (94.0%)	1,437,839 (92.4%)
50-54	1,544,553 (98.7%)	1,516,329 (96.9%)
45-49	1,539,913 (91.8%)	1,507,672 (89.9%)
40-44	1,578,966 (97.5%)	1,539,534 (95.0%)
35-39	1,750,854 (95.4%)	1,698,880 (92.6%)
30-34	1,769,122 (92.0%)	1,704,718 (88.6%)
25-29	1,704,901 (89.4%)	1,634,817 (85.7%)
20-24	1,498,781 (87.5%)	1,437,746 (84.0%)
16-19	1,080,793 (90.4%)	1,034,788 (86.5%)
12-15	1,012,626 (81.4%)	933,566 (75.0%)

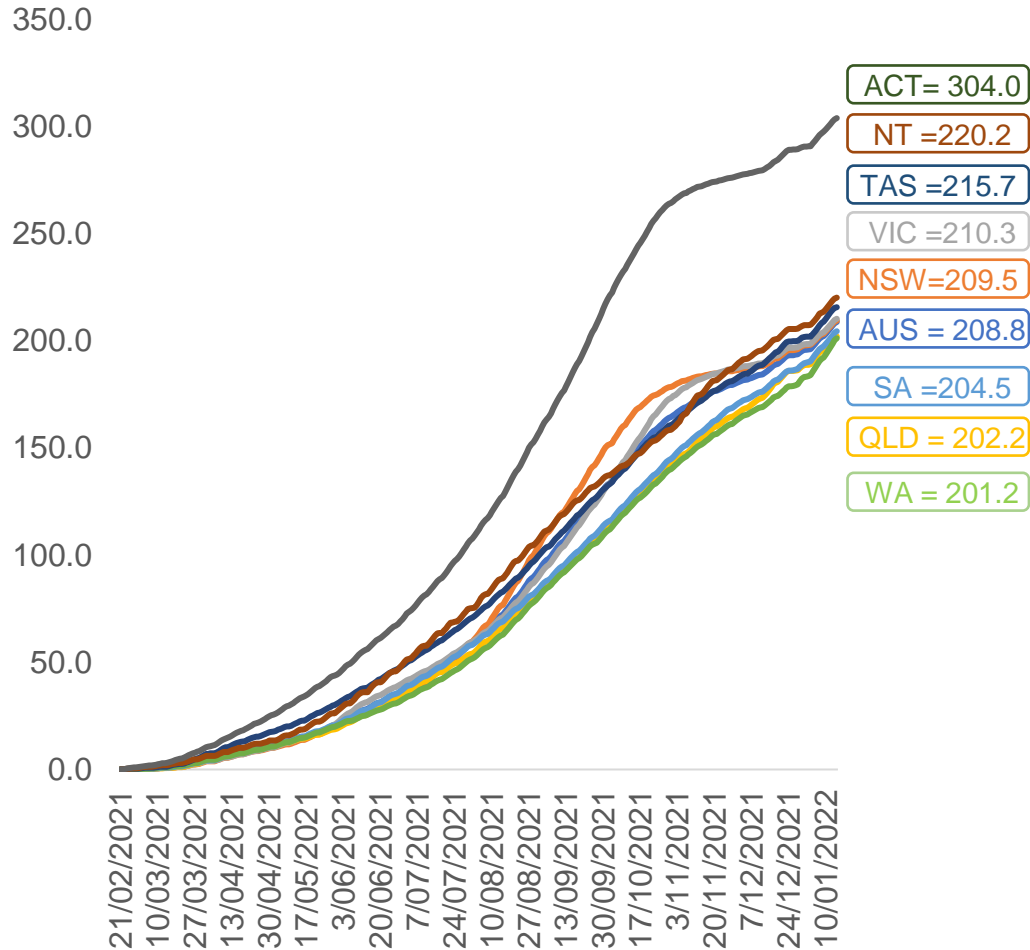


	AUS	ACT	NSW	NT	QLD	SA	TAS	VIC	WA
16 and over - dose 1	19,597,960	347,799	6,251,249	171,594	3,766,801	1,340,577	434,462	5,083,404	1,989,124
16 and over - dose 2	19,082,286	343,191	6,158,822	164,073	3,648,377	1,291,832	418,998	5,011,739	1,852,459
16 and over - population	20,619,959*	344,037	6,565,651	190,571	4,112,707	1,440,400	440,172	5,407,574	2,114,978
16 and over % with dose 1	95.04%	>99%	95.21%	90.04%	91.59%	93.07%	98.70%	94.01%	94.05%
16 and over % with dose 2	92.54%	>99%	93.80%	86.10%	88.71%	89.69%	95.19%	92.68%	87.59%
5 to 11 - dose 1	295,106	9,311	93,984	3,167	61,370	17,718	6,562	80,005	21,710
5 to 11 - population	2,276,638	39,789	716,460	24,750	478,731	148,816	45,033	578,499	244,154
5 to 11 % with dose 1	12.96%	23.40%	13.12%	12.80%	12.82%	11.91%	14.57%	13.83%	8.89%
12 to 15 - dose 1	1,012,626	19,770	320,597	10,337	197,753	64,853	21,529	272,029	97,673
12 to 15 - dose 2	933,566	19,154	305,761	8,990	177,784	58,018	19,496	259,802	77,743
12 to 15 - population	1,243,990	19,693	390,330	13,060	270,146	82,747	26,308	308,611	132,869
12 to 15 % with dose 1	81.40%	>99%	82.13%	79.15%	73.20%	78.38%	81.83%	88.15%	73.51%
12 to 15 % with dose 2	75.05%	97.26%	78.33%	68.84%	65.81%	70.11%	74.11%	84.18%	58.51%

*National population will not equal sum of listed jurisdictions due to a small number of people counted in national population residing in some 'other' territories. Sum of state doses will not add to national total as some records are unable to be geocoded to a State or Territory. Doses sourced from Australian Immunisation Register, population from ABS ERP June 2020

Vaccinations by location

Cumulative total doses administered vs eligible state populations*

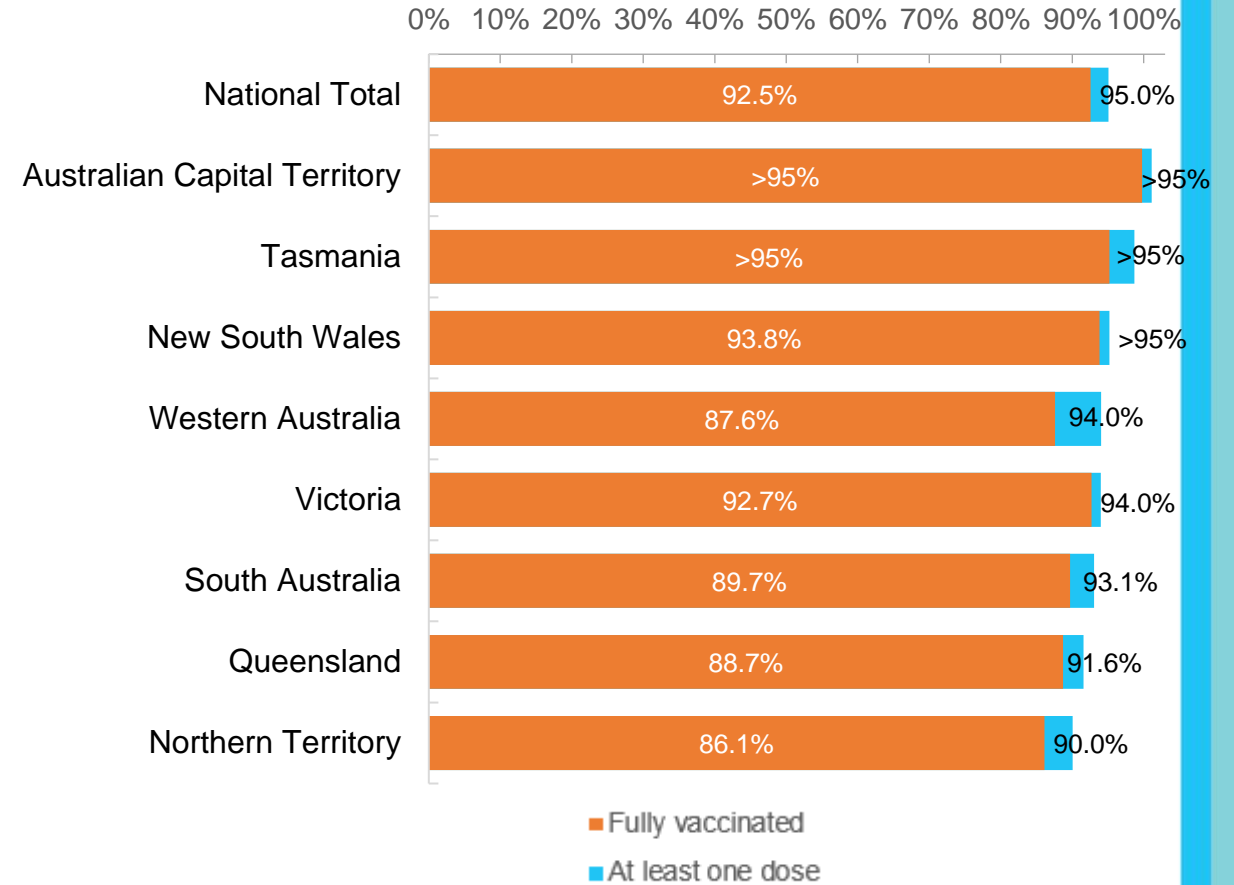


*Not an indication of percentage vaccinated, numbers will exceed 100 due to multiple doses required per person of the population. All doses are included for those aged 12 and above, and are based on vaccination provider location.

Data as at:
15 Jan 2022

Australia's COVID-19
Vaccine Roadmap

First and Second Doses by state of residence



Aboriginal and Torres Strait Islander peoples

Number of people vaccinated

Data as at:
11 Jan 2022
Updated weekly

Australia's COVID-19
Vaccine Roadmap



419,832

people over the age of 16
have had at least one dose

80.0%

of people over the age of 16
have had at least one dose



384,519

people over the age of 16
are fully vaccinated

73.2%

of people over the age of 16 are
fully vaccinated



**43,476
(60.9%)**

people aged 12-15 years
have had at least one dose

173 Aboriginal community controlled health services (ACCHS)

0#	50	27	41	12	3	21	19
ACT	NSW	NT	QLD	SA	TAS	VIC	WA

Medicare Address State ^{##}	Individuals Dose 1	Individuals Dose 1 %	Individuals Dose 2	Individuals Dose 2 %
Australian Capital Territory	4,932	90.9%	4,785	88.2%
New South Wales	136,926	86.3%	133,074	83.9%
Northern Territory	40,245	85.4%	35,848	76.1%
Queensland	110,207	77.1%	99,119	69.3%
South Australia	18,945	74.8%	16,765	66.2%
Tasmania	14,433	85.8%	13,563	80.6%
Victoria	35,493	88.7%	34,412	86.0%
Western Australia	44,223	69.5%	35,291	55.5%
Unknown/Other Territories	14,428	57.5%	11,662	46.5%
Totals	419,832	80.0%	384,519	73.2%

Source: Australian Immunisation Register

*Identifying as Aboriginal and Torres Strait Islander is optional and the estimated population may be under reported.

**Includes all Aboriginal and Torres Strait Islander peoples who have received a vaccination, not limited to those administered in an ACCHS setting

#ACCHS in the ACT are currently operating as a Commonwealth Vaccine Clinics so not included to avoid double counting

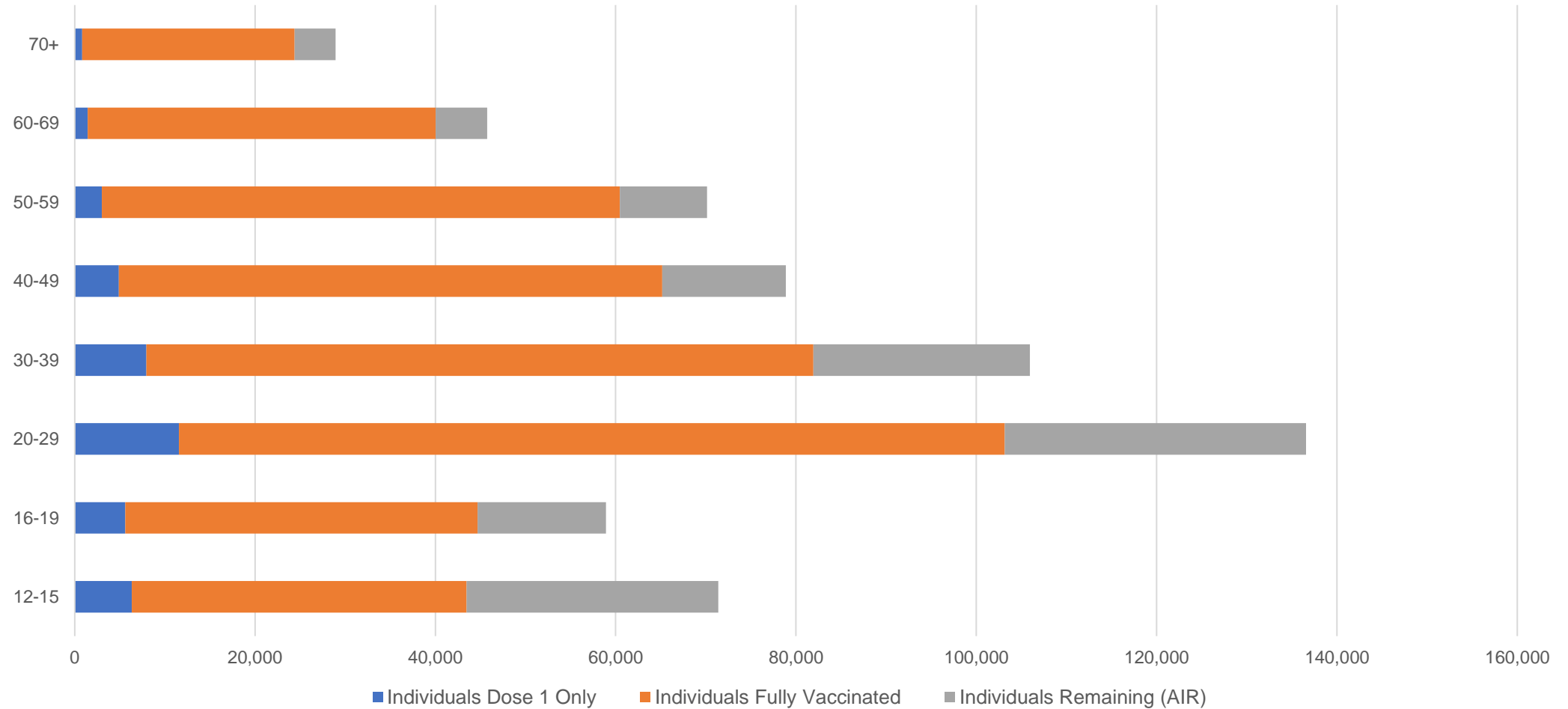
##The above table includes all identified Aboriginal and Torres Strait Islander people who are aged 16 and above by their state of residence.

Aboriginal and Torres Strait Islander peoples

Number of people vaccinated by age

Data as at:
11 Jan 2022
Updated weekly

Australia's COVID-19
Vaccine Roadmap



Source: Australian Immunisation Register

Data as at:
15 Jan 2022

Commonwealth primary care



Primary care vaccine administration sites

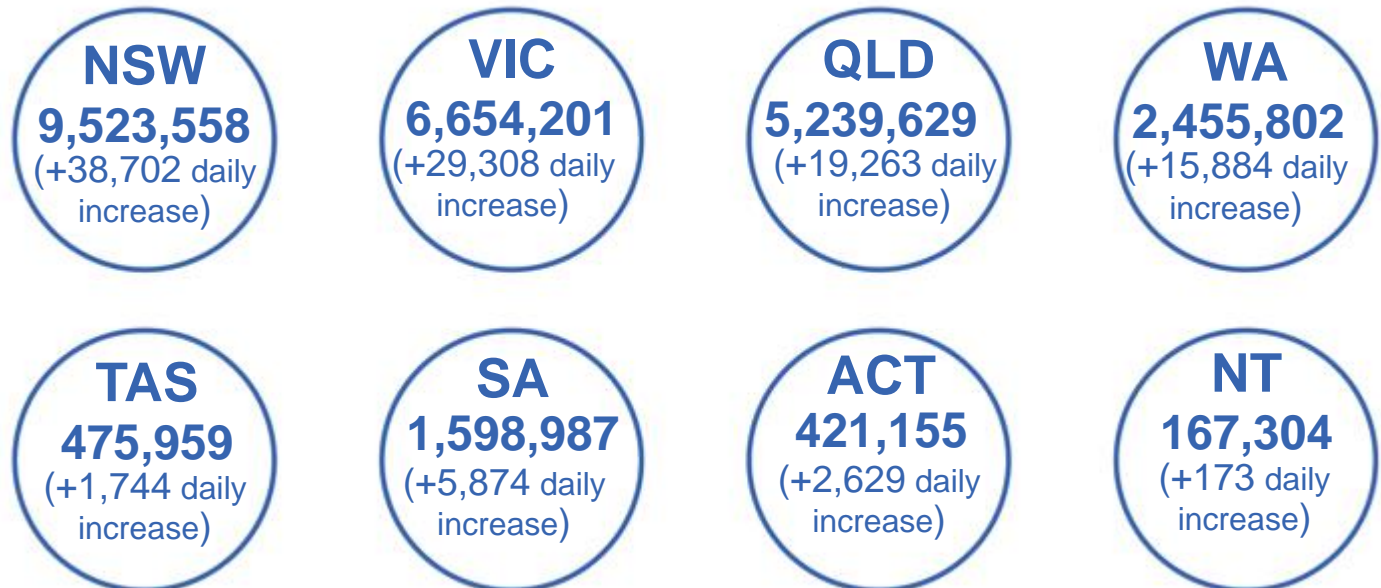
5,691	137	173	3,474
GPs	CVCs	ACCHS	Pharmacies



26,727,590 total vaccine doses administered
primary care settings as at 15 January
+ 114,328 recorded in the last 24 hours

Primary care vaccinations by provider type

	Doses administered	Daily increase	7 day increase
General Practice* includes other Commonwealth	22,686,292	79,907	920,969
Pharmacy	4,041,298	34,421	449,729



190,995

doses administered to persons residing in other territories or with missing residential information

*General practice includes Commonwealth Vaccination Clinics, Aboriginal Community Health Centres, Royal Flying Doctor Service and other Commonwealth vaccination facilities

Source: Australian Immunisation Register

Data as at:
15 Jan 2022

Commonwealth aged care and disability doses administered



1,184,475 (+ 1,108 last 24 hours)

Total vaccine doses administered in aged care and disability facilities as at 15 January

Number of doses administered as part of the Commonwealth aged and disability care rollout

NSW
540,777
(+85 daily increase)

VIC
220,878
(+505 daily increase)

QLD
185,337
(+117 daily increase)

WA
86,570
(+135 daily increase)

TAS
21,175
(+23 daily increase)

SA
78,737
(+184 daily increase)

ACT
15,529
(+27 daily increase)

NT
6,650
(+0 daily increase)

28,822

doses administered to persons residing in other territories or with missing residential information

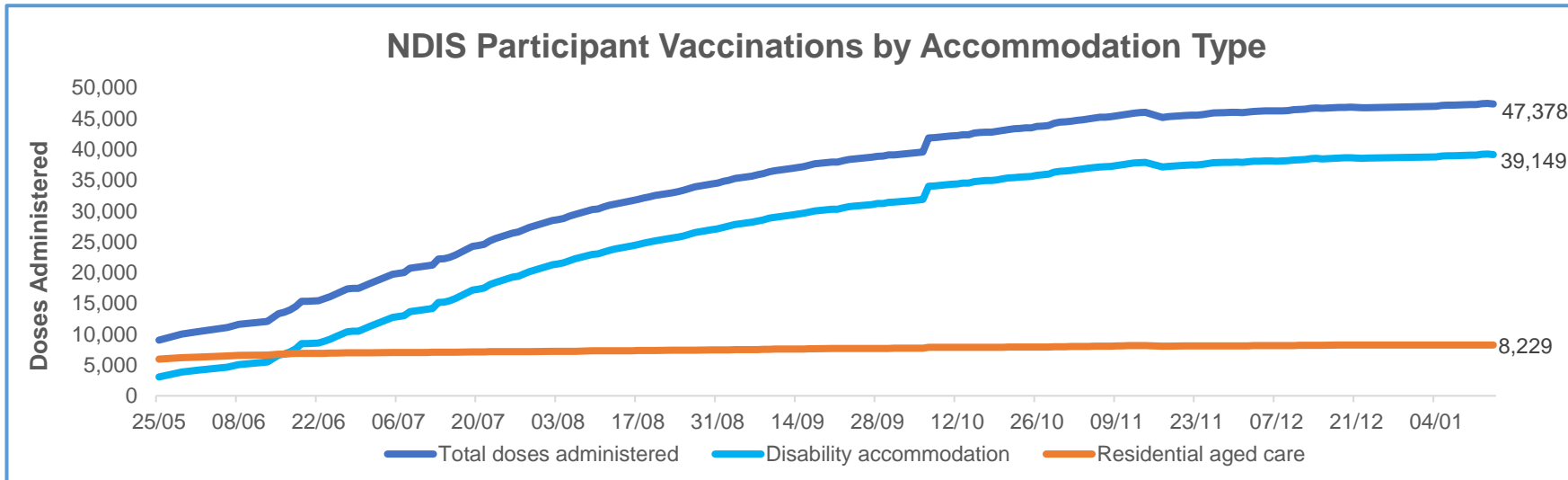
*Sourced from the Australian Immunisation Register. Includes all persons vaccinated at participating residential aged care, disability and related industry settings.
**State level breakdown indicates the residential location and may not align to the state in which the vaccination occurred.

Source: Australian Immunisation Register

Data as at:
14 Jan 2022*

Vaccination rate of people with disability and the disability workforce

Phase 1a – People with disability living in shared accommodation



	Total people with at least one dose	People fully vaccinated	Total number of individuals in cohort	Total doses administered	% People with at least one dose	% People fully vaccinated
NDIS participants living in shared accommodation **	24,015	23,363	27,603	47,378	87.0%	84.6%
NDIS screened workers ***	237,431	232,445	267,670	469,876	88.7%	86.8%



* Updates are available Monday to Friday on participants, and bi-weekly for workers, numbers may be up to four days old.

** Shared accommodation means two or more people with disability living in shared residential accommodation and NDIS participants living in Residential Aged Care accommodation as per the eligibility criteria of Phase 1a. The number of residents changes over time and refinement of methodology can lead to corrections in totals.

*** Total number of workers within the NDIS Commission Worker Screening database who have ever been successfully screened and linked to an NDIS registered provider or participant.

Source: Linkage between National Disability Insurance Agency data, NDIS Quality and Safeguards Commission data and the Australian Immunisation Register.

Residential aged care vaccination rollout

Residential aged care facilities status

100%

Commonwealth facilities visited (2,590 planned sites)

163,059

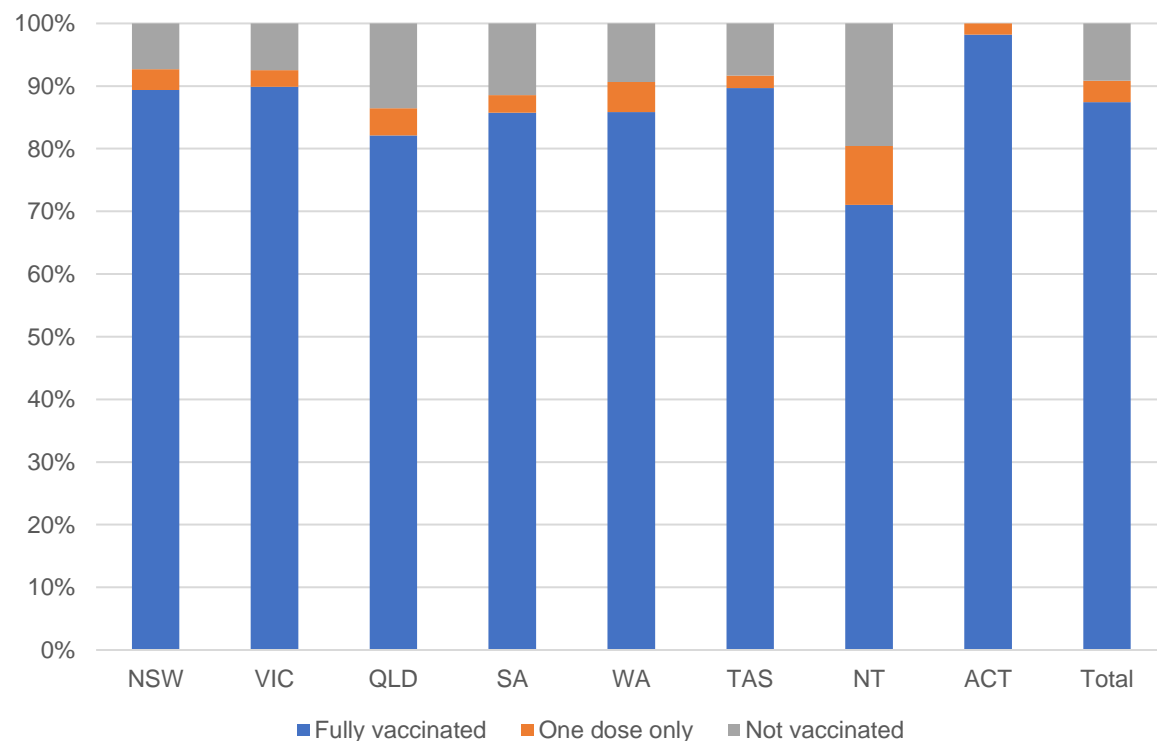
People fully vaccinated

169,504

People with at least one dose

Data as at: 13 Jan 2022

Aged care resident vaccinations



Aged care worker vaccinations

Jurisdictions	Total workers with at least one dose	Workers fully vaccinated	% Workers with at least one dose	% Workers fully vaccinated
NSW	78,869	78,836	99.0%	98.9%
VIC	71,326	71,326	99.6%	99.6%
QLD	48,712	48,693	99.7%	99.7%
SA	27,610	27,546	99.8%	99.6%
WA	23,875	23,799	99.7%	99.4%
TAS	7,585	7,545	100.0%	99.4%
NT	834	833	100.0%	99.9%
ACT	2,889	2,889	95.9%	95.9%
Total	261,700	261,467	99.4%	99.3%

Source: My Aged Care Portal staff vaccination progress

**Resident vaccination information is reported manually by service providers

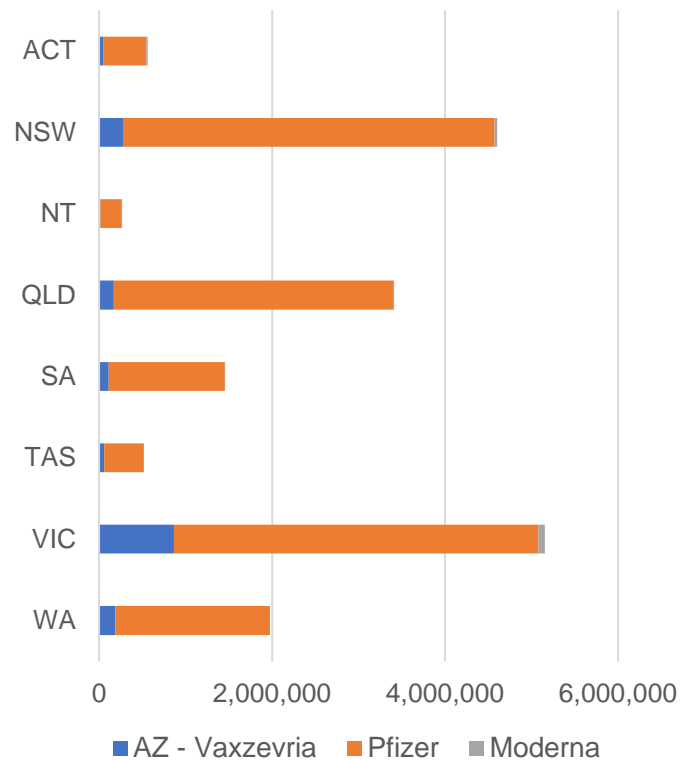
*Status updates are provided by facilities at least once per week. Reporting is updated Monday to Friday to encompass different facility updates being made on different days.

Data is sourced directly from Aged Care Service Providers and is not drawn or closely aligned with data from AIR due to inconsistencies and potential lags in uploading of records.

Data as at:
15 Jan 2022

Jurisdiction administered

Total vaccine doses administered in State and Territory clinics as at 15 January



18,041,948 total vaccine doses administered in State and Territory clinics as at 15 January
 + **75,816** recorded in the last 24 hours
 + **559,988** recorded in the last 7 days

NSW
4,626,255
 (+19,483 daily increase)

VIC
5,179,705
 (+18,509 daily increase)

QLD
3,438,657
 (+14,737 daily increase)

WA
1,983,392
 (+9,808 daily increase)

TAS
521,084
 (+2,615 daily increase)

SA
1,462,083
 (+7,703 daily increase)

ACT
566,398
 (+1,958 daily increase)

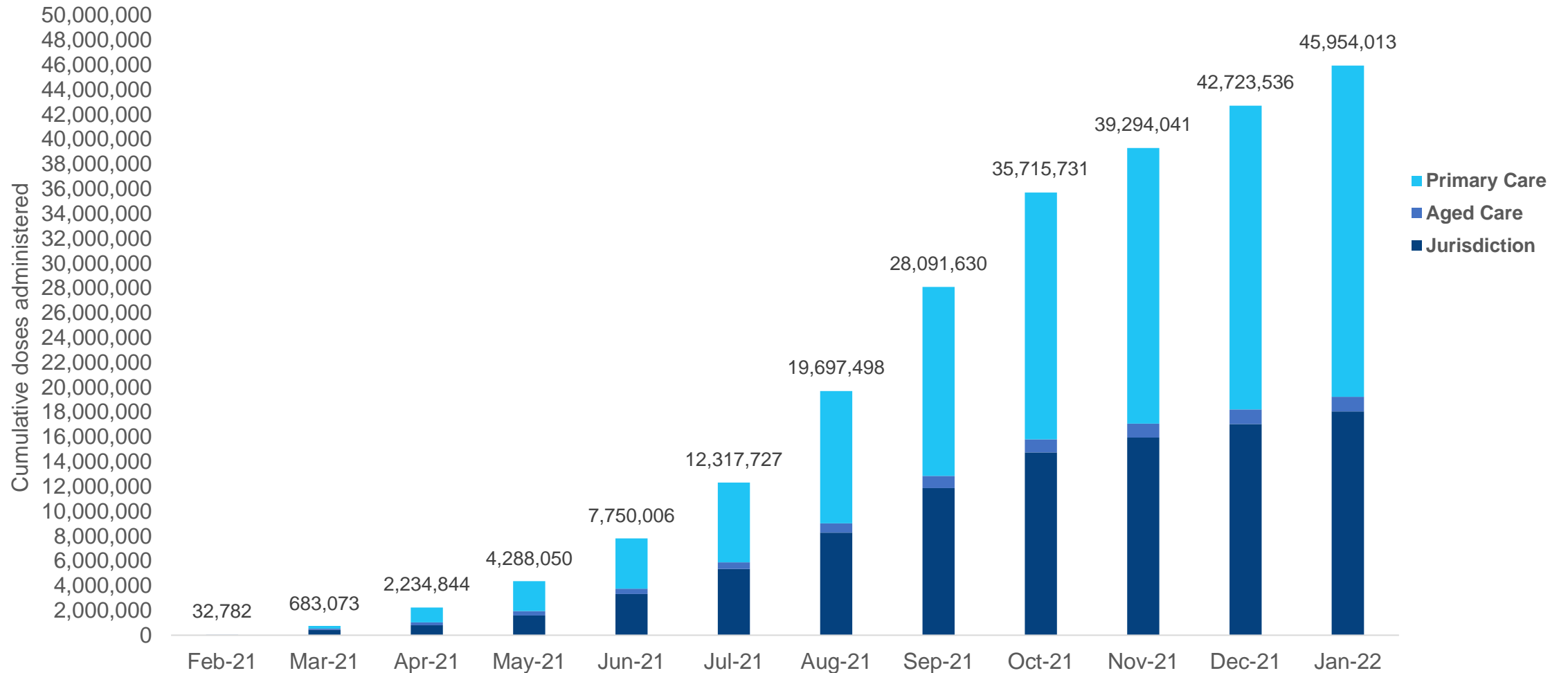
NT
264,374
 (+1,003 daily increase)

*Sourced from the Australian Immunisation Register. Numbers are calculated as difference in daily cumulative reported numbers to allow for historical corrections.

Source: Australian Immunisation Register

Data as at:
15 Jan 2022

Cumulative doses administered by channel



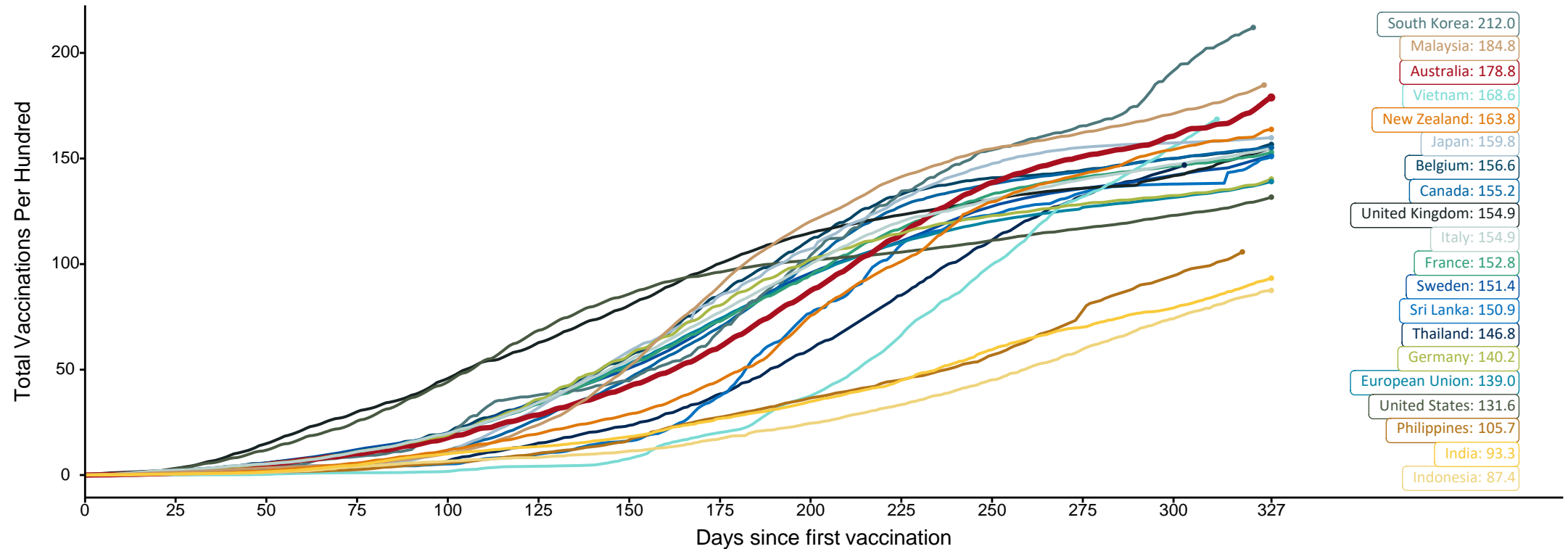
Source: Australian Immunisation Register

Doses at equivalent stages of rollout (Day 327)

Data as at:
15 Jan 2022

The x-axis is truncated at the length of Australia's vaccination program. Countries with intermittent reporting have had their doses per 100 imputed to Australia's current stage of rollout. Israel excluded as it is beyond scale of the graph

Cumulative doses administered (15 Jan): **45,954,013**

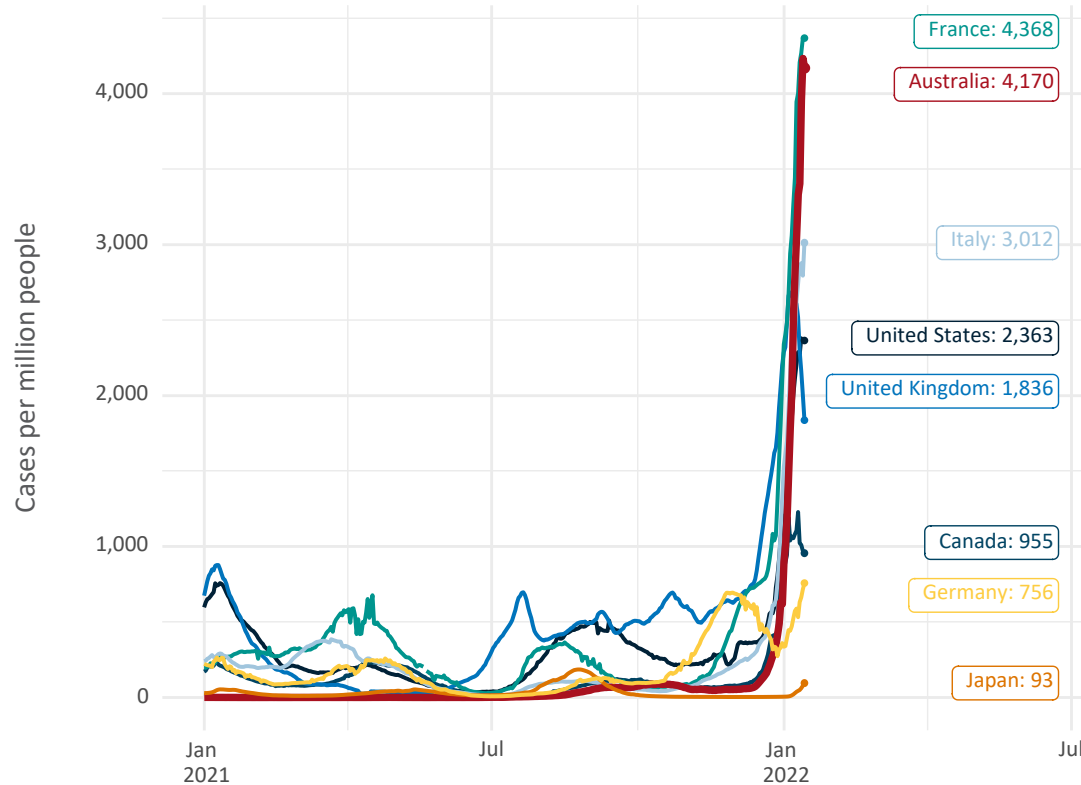


Note: From 15 September 2021, data for Australia includes all doses administered to people 12 and over. Prior to 15 September, data was for 16 and over
 Due to data revisions, Singapore has been removed from the chart
 Source: Department of Health (Australia), Our World in Data (international)
 Latest data: 15 January

Data as at:
15 Jan 2022

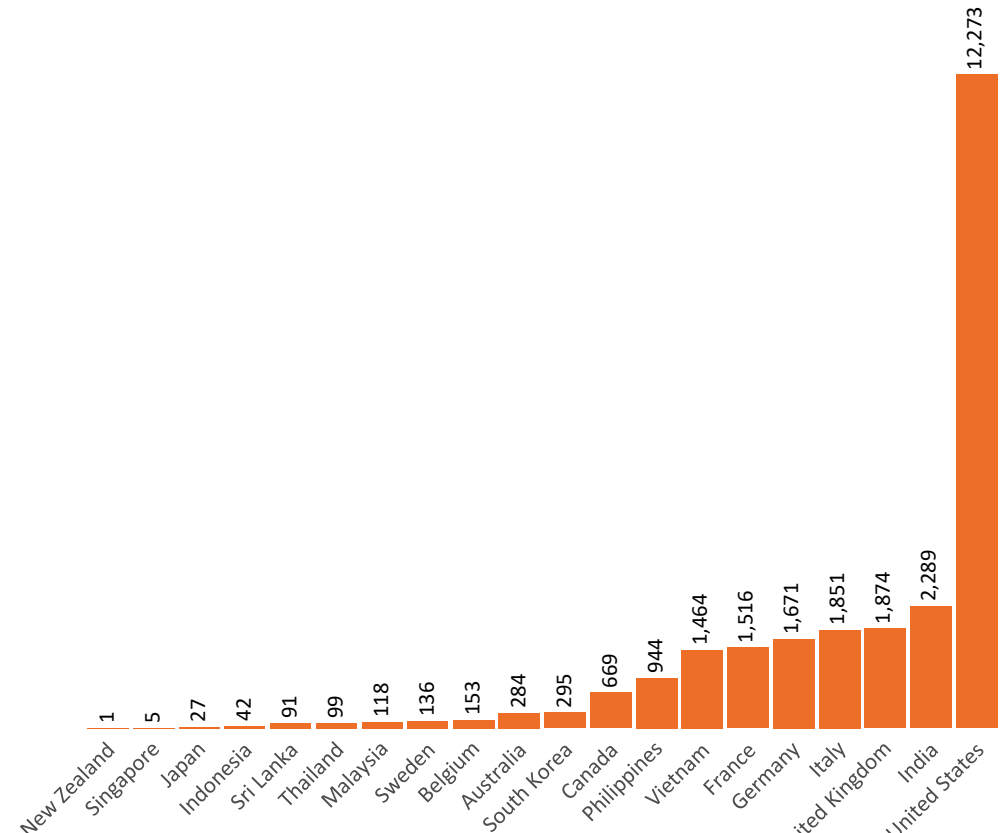
International data – COVID-19

New daily cases per million in 2021, Australia and G7 countries
Smoothed - 7 day average



Source: OWID
Data downloaded: 16 Jan 2022 08:37
Latest data: 14 Jan 2022

COVID-19 deaths in past 7 days - Australia and select countries



Source: OWID
Data downloaded: 16 Jan 2022 08:37
Latest data: 14 Jan 2022

Data as at midnight:
9 Jan 2022
Updated weekly

Pandemic Response Payments



2.38 million
People have received at least one COVID Disaster Payment (including ISP200)

\$13.11 billion
Paid Out as at 9 Jan 2022


6.17 million
Claims granted across three different payments



96%
of Claims Received Digitally



COVID Disaster Payment:	5.89 million claims received - 2.19 million individuals paid a total of \$12.59 billion.
\$200 Income Support Payment:	353,000 claims received - 183,000 individuals paid a total of \$268.91 million.
Pandemic Leave Disaster Payment:	261,000 claims received - 170,000 individuals paid a total of \$254.84 million.



THREE PAYMENTS AVAILABLE

COVID Disaster Payment
assisting during a lockdown event in a Commonwealth hotspot.

Income Support Payment \$200
for income support recipients who lost at least 8 hours of work.

Pandemic Leave Disaster Payment
for those who have to self-isolate, quarantine or care.

For more information visit:
servicesaustralia.gov.au

COVID-19 DISASTER PAYMENTS

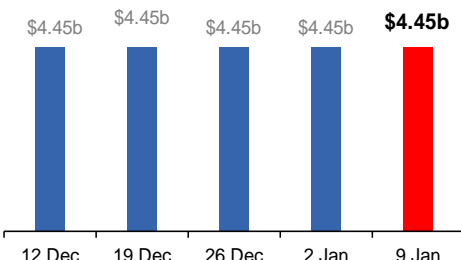
Victoria
Lockdown (#6) from 6 Aug to 28 Oct
Claiming period ended 9 Dec

745,000 people have received at least one COVID Disaster Payment.

\$4.45b paid out as at 9 Jan 2022.

\$5,000 paid in initial and reoccurring payments in the week ending 9 Jan 2022.

Cumulative payments made by State since activation on 8 Jun 2021.



Date	Cumulative Payments (\$b)
12 Dec	\$4.45b
19 Dec	\$4.45b
26 Dec	\$4.45b
2 Jan	\$4.45b
9 Jan	\$4.45b

Northern Territory
Lockdown (#3) from 16 Nov to 22 Nov
Claiming period ends 27 Dec

7,500 people have received at least one COVID Disaster Payment.

\$6.9m paid out as at 9 Jan 2022.

\$1,000 paid in initial payments in the week ending 9 Jan 2022.

Cumulative payments made by Territory since activation on 25 Aug 2021.



Date	Cumulative Payments (\$m)
12 Dec	\$6.5m
19 Dec	\$6.7m
26 Dec	\$6.9m
2 Jan	\$6.9m
9 Jan	\$6.9m

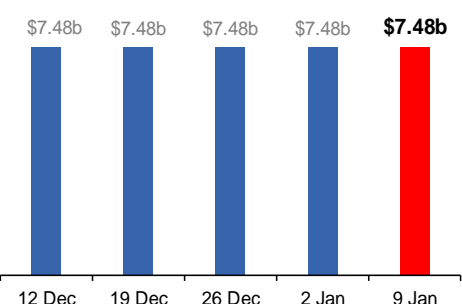
New South Wales
Lockdown from 24 Jun to 10 Oct
Claiming period ended 27 Nov

1.08m people have received at least one COVID Disaster Payment.

\$7.48b paid out as at 9 Jan 2022.

\$5,000 paid in initial and reoccurring payments in the week ending 9 Jan 2022.

Cumulative payments made by State since activation on 1 Jul 2021.



Date	Cumulative Payments (\$b)
12 Dec	\$7.48b
19 Dec	\$7.48b
26 Dec	\$7.48b
2 Jan	\$7.48b
9 Jan	\$7.48b

Australian Capital Territory
Lockdown from 12 Aug to 14 Oct
Claiming period ended 25 Nov

65,000 people have received at least one COVID Disaster Payment.

\$344.7m paid out as at 9 Jan 2022.

\$0 paid in initial and reoccurring payments in the week ending 9 Jan 2022.

Cumulative payments made by Territory since activation on 20 Aug 2021.



Date	Cumulative Payments (\$m)
12 Dec	\$344.7m
19 Dec	\$344.7m
26 Dec	\$344.7m
2 Jan	\$344.7m
9 Jan	\$344.7m

Data as at midnight:
9 Jan 2022
Updated weekly

Pandemic Response Payments (continued)

COVID-19 DISASTER PAYMENTS


Tasmania

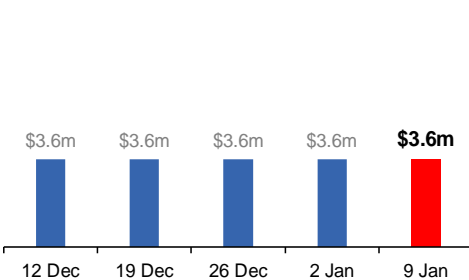
Lockdown from 15 Oct to 18 Oct
Claiming period ended 12 Nov

6,900 people have received at least one COVID Disaster Payment.

\$3.6m paid out as at 9 Jan 2022.

\$0 paid in initial and reoccurring payments in the week ending 9 Jan 2022.

 Cumulative payments made by State since activation on 22 Oct 2021.




Queensland

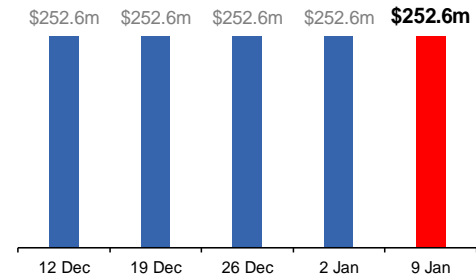
Lockdown from 31 Jul to 11 Aug
Claiming period ended 28 Aug

196,000 people have received at least one COVID Disaster Payment.

\$252.6m paid out as at 9 Jan 2022.

\$600 paid in initial and reoccurring payments in the week ending 9 Jan 2022.

 Cumulative payments made by State since activation on 7 Aug 2021.




South Australia

Lockdown from 21 to 27 Jul
Claiming period ended 17 Aug

86,000 people have received at least one COVID Disaster Payment.

\$48.2m paid out as at 9 Jan 2022.

\$600 paid in initial and reoccurring payments in the week ending 9 Jan 2022.

 Cumulative payments made by State since activation on 28 Jul 2021.

