



Australian Government
Operation COVID Shield

COVID-19 Vaccine Rollout

12 January 2022

Data as at:
11 Jan 2022

Total vaccine doses



44,730,133 total vaccine
doses administered nationally as at 11 January
+327,415 recorded in the last 24 hours



19,555,986

people have had at least one
dose

94.8%

of people over the age of 16
have had at least one dose



19,020,349

people are fully vaccinated

92.2%

of people over the age of 16 are
fully vaccinated



4,109,839

people over the age of 18
who have received more
than two doses

NSW
14,300,038
(+99,189 daily
increase)

VIC
11,799,698
(+81,602 daily
increase)

QLD
8,678,957
(+72,952 daily
increase)

WA
4,392,094
(+40,148 daily
increase)

TAS
984,875
(+7,310 daily
increase)

SA
3,047,169
(+22,143 daily
increase)

ACT
1,087,190
(+8,095 daily
increase)

NT
440,112
(+3,016 daily
increase)

*Administration state breakdown indicates state in which a vaccine was administered

**Overall dose count includes instances of more than two doses per person in a small number of cases.

Source: Australian Immunisation Register

Booster Vaccinations

Australia's COVID-19
Vaccine Roadmap

Data as at:
11 Jan 2022



4,109,839 total people over the age of 18 years old
who have received more than two doses nationally

+242,629 people who have received more than two doses
nationally in the last 24 hours

NSW
1,377,173
(78,236 daily
increase)

VIC
1,047,117
(64,891 daily
increase)

QLD
795,101
(47,048 daily
increase)

WA
351,938
(24,443 daily
increase)

TAS
93,258
(4,601 daily
increase)

SA
299,773
(16,444 daily
increase)

ACT
87,700
(4,173 daily
increase)

NT
35,404
(1,620 daily
increase)

22,375

doses administered to persons
residing in other territories or with
missing residential information

Source: Australian Immunisation Register

Data as at:
11 Jan 2022

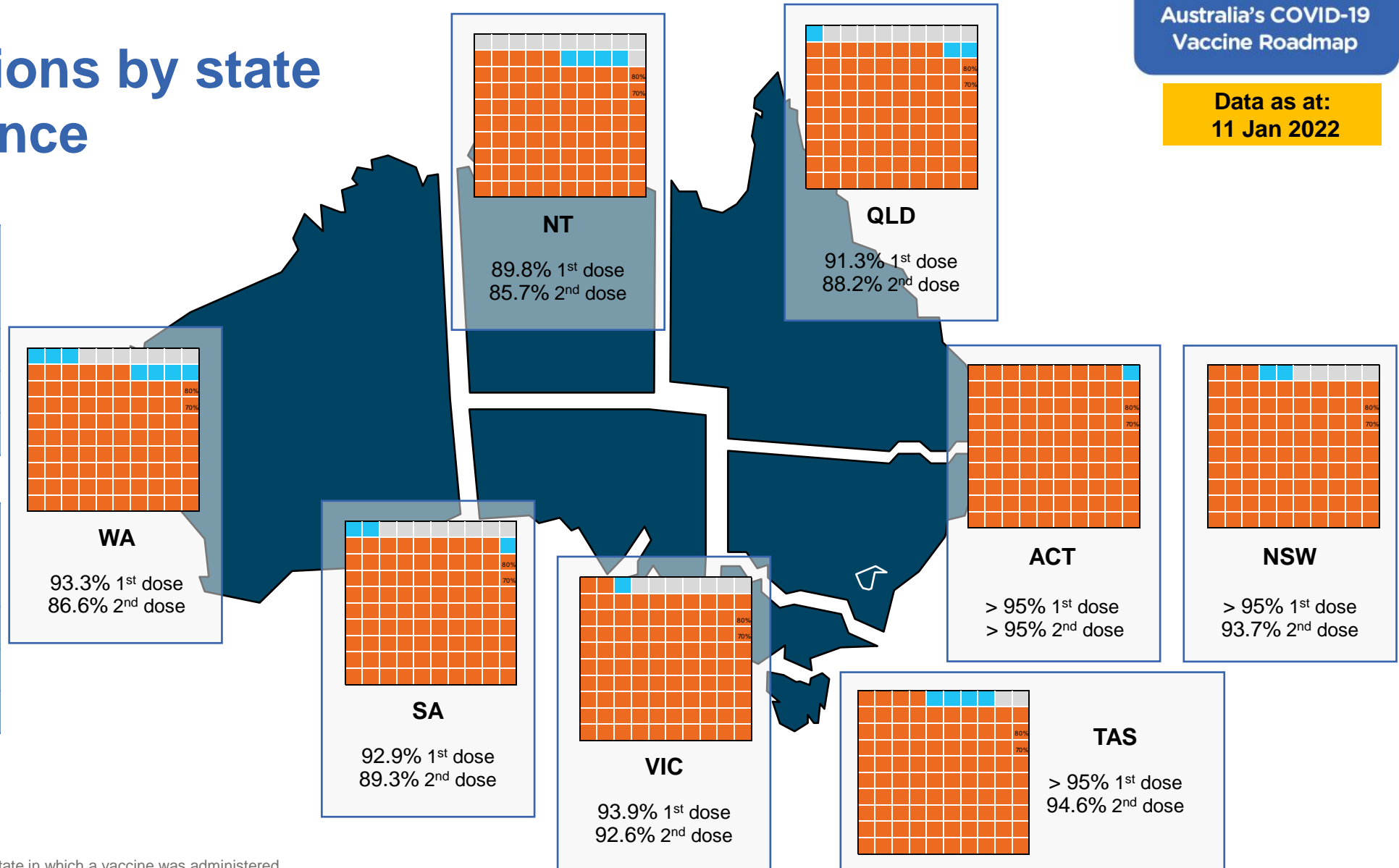
Vaccinations by state of residence

First doses

Age	Today	4 weeks ago	8 weeks ago
16+	94.8%	93.7%	91.3%
50+	>95%	>95%	>95%
70+	>95%	>95%	>95%

Fully vaccinated

Age	Today	4 weeks ago	8 weeks ago
16+	92.2%	90.0%	84.5%
50+	>95%	>95%	92.1%
70+	>95%	>95%	>95%



*Residential state may differ from the state in which a vaccine was administered

Commonwealth and Jurisdiction vaccine doses administered

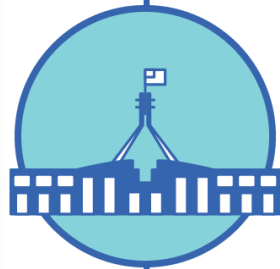
Data as at:
11 Jan 2022



44,730,133 total vaccine
doses administered nationally as at 11 January
+ 327,415 recorded in the last 24 hours



17,694,224
doses administered by state
and territory facilities
+ 88,175
recorded in the last 24 hours



27,035,909
doses administered by
commonwealth facilities
+ 239,240
recorded in the last 24 hours

25,859,252 total vaccine doses
administered in primary care settings
1,176,657 total vaccine doses
administered in aged care and disability
settings

NSW	Jurisdictions	Commonwealth
Cumulative	4,549,590	9,750,448
Daily increase	17,753	81,436

VIC	Jurisdictions	Commonwealth
Cumulative	5,088,970	6,710,728
Daily increase	24,963	56,639

QLD	Jurisdictions	Commonwealth
Cumulative	3,372,375	5,306,582
Daily increase	23,009	49,943

WA	Jurisdictions	Commonwealth
Cumulative	1,935,319	2,456,775
Daily increase	12,446	27,702

TAS	Jurisdictions	Commonwealth
Cumulative	508,984	475,891
Daily increase	2,963	4,347

SA	Jurisdictions	Commonwealth
Cumulative	1,426,010	1,621,159
Daily increase	8,846	13,297

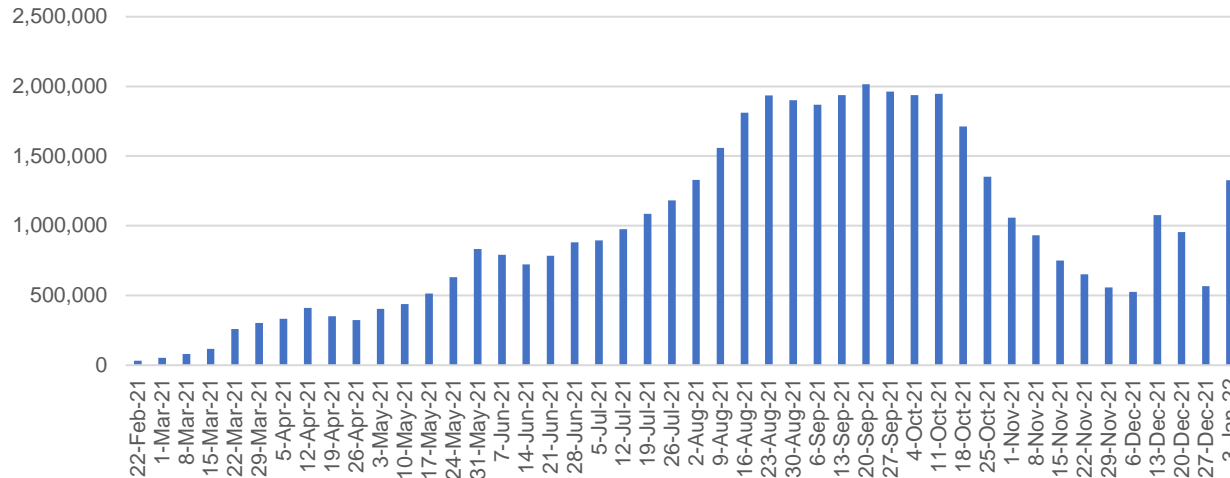
ACT	Jurisdictions	Commonwealth
Cumulative	555,134	532,056
Daily increase	^	^

NT	Jurisdictions	Commonwealth
Cumulative	257,842	182,270
Daily increase	1,594	1,422

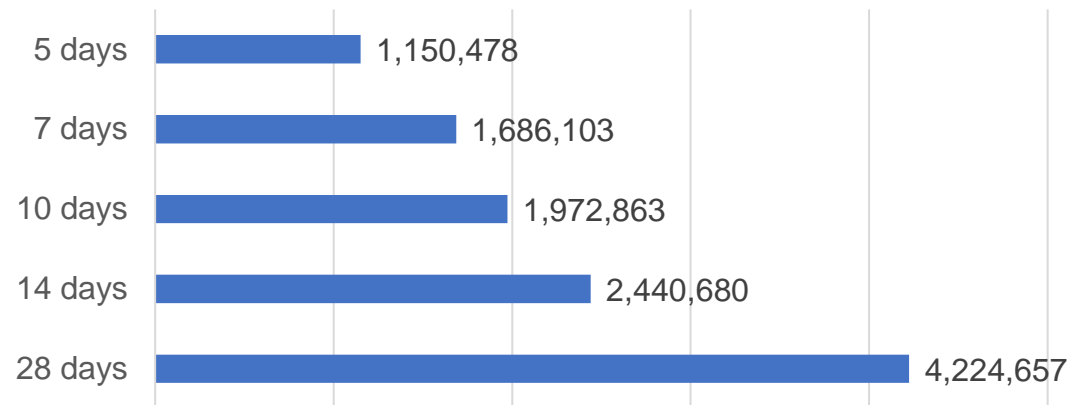
^ ACT Jurisdictions Daily increase – Data not available today due to data quality issues

Vaccine milestone charts

Doses Administered by Week



Doses Reported

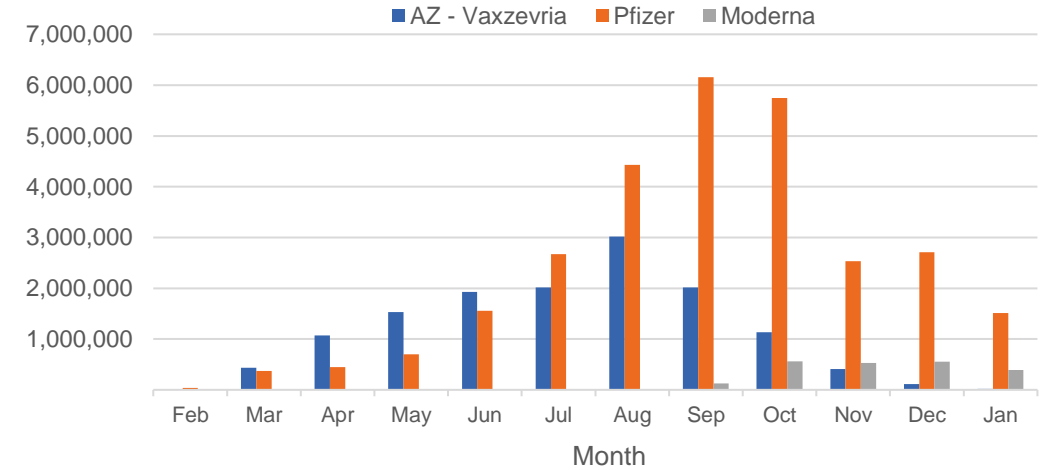


*Sourced from the Australian Immunisation Register.

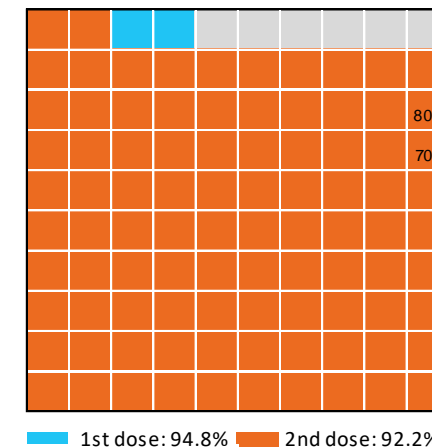
Data as at:
11 Jan 2022

Australia's COVID-19
Vaccine Roadmap

Doses by administration month and vaccine type



Eligible population percentage coverage



*Each square represents 1% of the national population.
Squares are filled as milestones are achieved.

Doses by age and sex

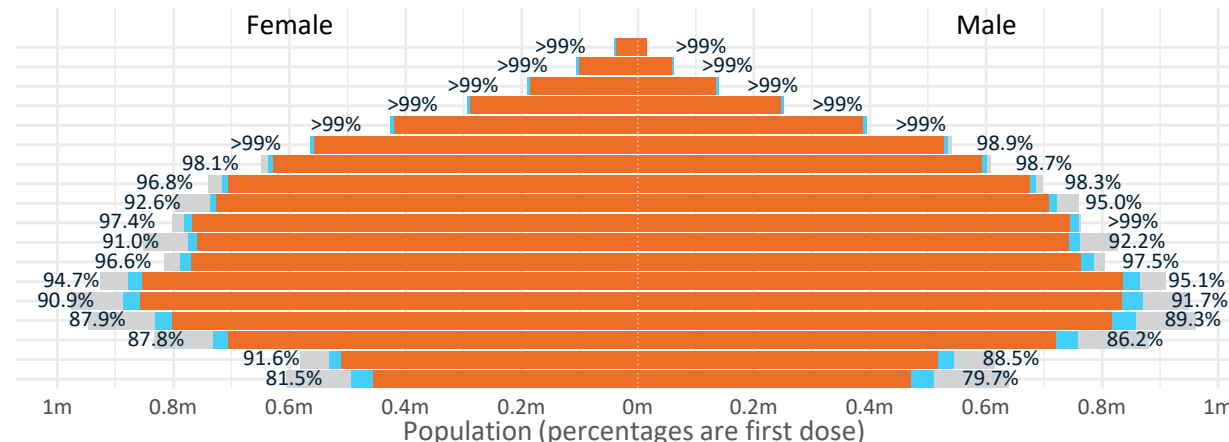
First and second doses by age and sex

Data as at:
11 Jan 2022

Age	Dose 1	Dose 2
95+	55,369 (>99%)	51,622 (97.6%)
90-94	166,439 (>99%)	159,342 (>99%)
85-89	328,967 (>99%)	319,222 (>99%)
80-84	545,272 (>99%)	534,401 (>99%)
75-79	820,655 (>99%)	808,342 (>99%)
70-74	1,099,414 (>99%)	1,084,083 (98.1%)
65-69	1,239,756 (98.5%)	1,221,199 (97.1%)
60-64	1,403,102 (97.7%)	1,380,409 (96.1%)
55-59	1,459,989 (93.9%)	1,435,304 (92.3%)
50-54	1,541,937 (98.6%)	1,512,440 (96.7%)
45-49	1,537,659 (91.7%)	1,503,968 (89.7%)
40-44	1,575,291 (97.2%)	1,534,244 (94.7%)
35-39	1,746,088 (95.2%)	1,692,252 (92.2%)
30-34	1,764,000 (91.7%)	1,697,462 (88.2%)
25-29	1,699,730 (89.2%)	1,627,060 (85.3%)
20-24	1,495,132 (87.3%)	1,430,652 (83.6%)
16-19	1,077,186 (90.1%)	1,028,347 (86.0%)
12-15	1,002,437 (80.6%)	926,092 (74.4%)

	16+	50+	12-15	5-11
Dose 1	94.84% (19,555,986 doses / 20,619,959 people)	98.99% (8,660,900 doses / 8,749,703 people)	80.58% (1,002,437 doses / 1,243,990 people)	3.78% (86,017 doses / 2,276,638 people)
Dose 2	92.24% (19,020,349 doses / 20,619,959 people)	97.22% (8,506,364 doses / 8,749,703 people)	74.45% (926,092 doses / 1,243,990 people)	

Dose 1 Dose 2 Population

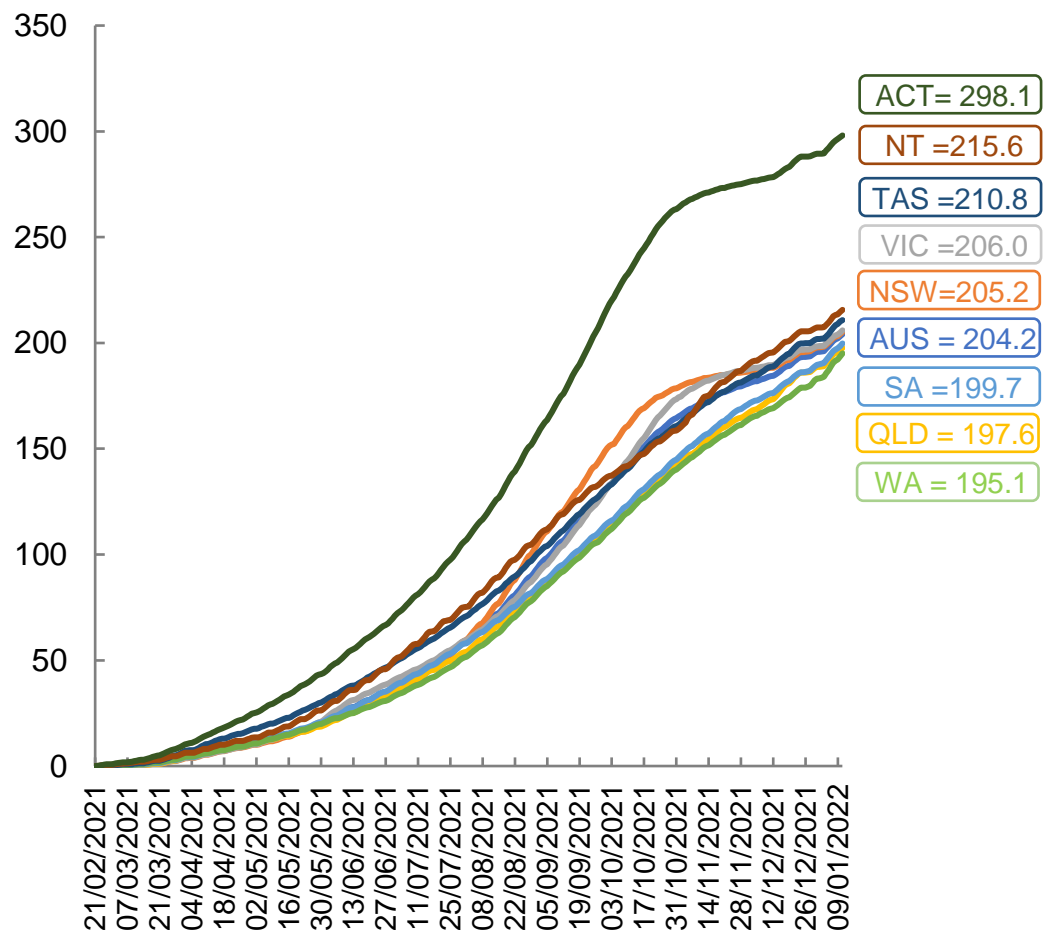


	AUS	ACT	NSW	NT	QLD	SA	TAS	VIC	WA
16 and over - dose 1	19,555,986	347,646	6,246,533	171,123	3,756,022	1,337,444	433,226	5,080,202	1,973,041
16 and over - dose 2	19,020,349	342,978	6,154,249	163,304	3,626,411	1,286,575	416,472	5,007,879	1,832,153
16 and over - population	20,619,959*	344,037	6,565,651	190,571	4,112,707	1,440,400	440,172	5,407,574	2,114,978
16 and over % with dose 1	94.84%	>99%	95.14%	89.79%	91.33%	92.85%	98.42%	93.95%	93.29%
16 and over % with dose 2	92.24%	>99%	93.73%	85.69%	88.18%	89.32%	94.62%	92.61%	86.63%
5 to 11 - dose 1	86,017	2,582	29,006	951	16,414	4,828	1,416	23,806	6,687
5 to 11 - population	2,276,638	39,789	716,460	24,750	478,731	148,816	45,033	578,499	244,154
5 to 11 % with dose 1	3.78%	6.49%	4.05%	3.84%	3.43%	3.24%	3.14%	4.12%	2.74%
12 to 15 - dose 1	1,002,437	19,747	319,066	10,188	194,459	63,978	21,189	271,131	94,781
12 to 15 - dose 2	926,092	19,135	305,168	8,867	175,197	57,215	19,200	259,036	75,600
12 to 15 - population	1,243,990	19,693	390,330	13,060	270,146	82,747	26,308	308,611	132,869
12 to 15 % with dose 1	80.58%	>99%	81.74%	78.01%	71.98%	77.32%	80.54%	87.86%	71.33%
12 to 15 % with dose 2	74.45%	97.17%	78.18%	67.89%	64.85%	69.14%	72.98%	83.94%	56.90%

*National population will not equal sum of listed jurisdictions due to a small number of people counted in national population residing in some 'other' territories. Sum of state doses will not add to national total as some records are unable to be geocoded to a State or Territory.
Doses sourced from Australian Immunisation Register, population from ABS ERP June 2020

Vaccinations by location

Cumulative total doses administered vs eligible state populations*

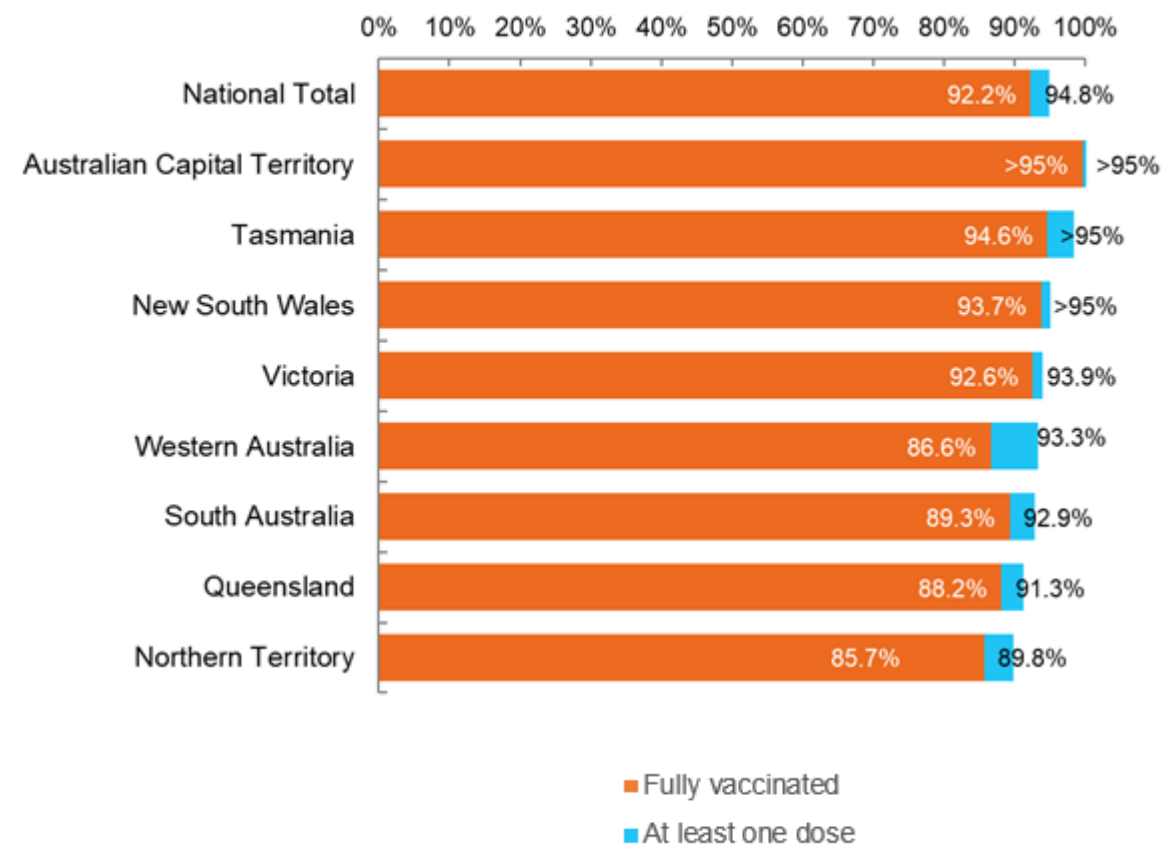


*Not an indication of percentage vaccinated, numbers will exceed 100 due to multiple doses required per person of the population. All doses are included for those aged 12 and above, and are based on vaccination provider location.

Data as at:
11 Jan 2022

Australia's COVID-19
Vaccine Roadmap

First and Second Doses by state of residence



Aboriginal and Torres Strait Islander peoples

Number of people vaccinated

Data as at:
11 Jan 2022
Updated weekly

Australia's COVID-19
Vaccine Roadmap



419,832

people over the age of 16
have had at least one dose

80.0%

of people over the age of 16
have had at least one dose



384,519

people over the age of 16
are fully vaccinated

73.2%

of people over the age of 16 are
fully vaccinated



**43,476
(60.9%)**

people aged 12-15 years
have had at least one dose

173 Aboriginal community controlled health services (ACCHS)

0#	50	27	41	12	3	21	19
ACT	NSW	NT	QLD	SA	TAS	VIC	WA

Medicare Address State ^{##}	Individuals Dose 1	Individuals Dose 1 %	Individuals Dose 2	Individuals Dose 2 %
Australian Capital Territory	4,932	90.9%	4,785	88.2%
New South Wales	136,926	86.3%	133,074	83.9%
Northern Territory	40,245	85.4%	35,848	76.1%
Queensland	110,207	77.1%	99,119	69.3%
South Australia	18,945	74.8%	16,765	66.2%
Tasmania	14,433	85.8%	13,563	80.6%
Victoria	35,493	88.7%	34,412	86.0%
Western Australia	44,223	69.5%	35,291	55.5%
Unknown/Other Territories	14,428	57.5%	11,662	46.5%
Totals	419,832	80.0%	384,519	73.2%

Source: Australian Immunisation Register

*Identifying as Aboriginal and Torres Strait Islander is optional and the estimated population may be under reported.

**Includes all Aboriginal and Torres Strait Islander peoples who have received a vaccination, not limited to those administered in an ACCHS setting

#ACCHS in the ACT are currently operating as a Commonwealth Vaccine Clinics so not included to avoid double counting

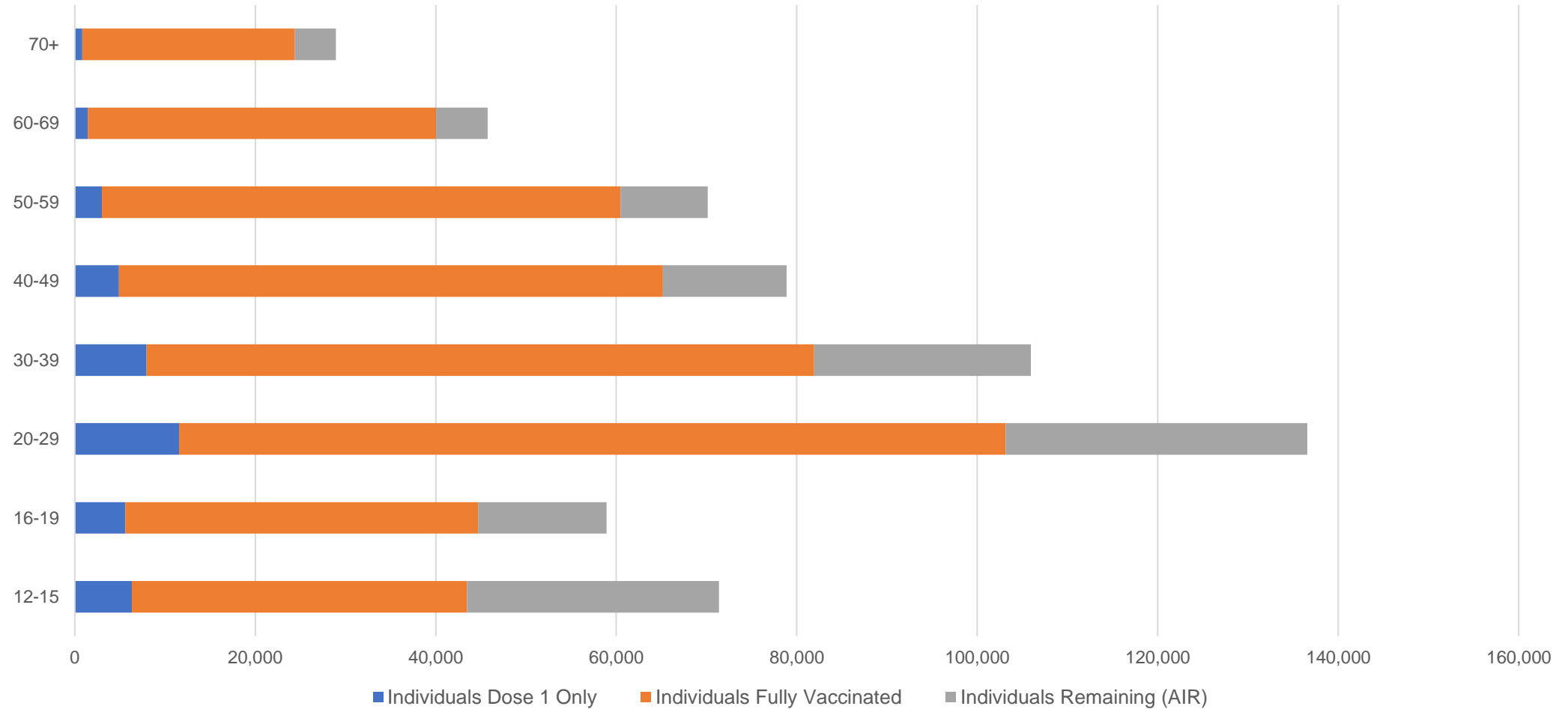
##The above table includes all identified Aboriginal and Torres Strait Islander people who are aged 16 and above by their state of residence.

Aboriginal and Torres Strait Islander peoples

Number of people vaccinated by age

Data as at:
11 Jan 2022
Updated weekly

Australia's COVID-19
Vaccine Roadmap



Source: Australian Immunisation Register

Commonwealth primary care

Data as at:
11 Jan 2022

Australia's COVID-19
Vaccine Roadmap



Primary care vaccine administration sites

5,691	137	173	3,474
GPs	CVCs	ACCHS	Pharmacies



25,859,252 total vaccine doses administered
primary care settings as at 11 January
+ 238,546 recorded in the last 24 hours

Primary care vaccinations by provider type

	Doses administered	Daily increase	7 day increase
General Practice* includes other Commonwealth	22,096,304	157,965	699,574
Pharmacy	3,762,948	80,581	442,378

NSW
9,234,225
(+80,792 daily increase)

VIC
6,445,615
(+56,120 daily increase)

QLD
5,063,975
(+49,436 daily increase)

WA
2,353,065
(+27,637 daily increase)

TAS
460,057
(+4,252 daily increase)

SA
1,550,171
(+13,231 daily increase)

ACT
405,167
(^ daily increase)

NT
162,549
(+1,303 daily increase)

184,428

doses administered to persons
residing in other territories or with
missing residential information

*General practice includes Commonwealth Vaccination Clinics, Aboriginal Community Health Centres, Royal Flying Doctor Service and other Commonwealth vaccination facilities

^ACT daily increase – Data not available due to data quality issues.

Source: Australian Immunisation Register

Data as at:
11 Jan 2022

Commonwealth aged care and disability doses administered



1,176,657 (+ 694 last 24 hours)

Total vaccine doses administered in aged care and disability facilities as at 11 January

Number of doses administered as part of the Commonwealth aged and disability care rollout

NSW
538,579
(+291 daily increase)

VIC
219,348
(+271 daily increase)

QLD
183,858
(+17 daily increase)

WA
85,098
(+40 daily increase)

TAS
21,098
(+2 daily increase)

SA
78,194
(+34 daily increase)

ACT
15,365
(+4 daily increase)

NT
6,645
(+2 daily increase)

28,472

doses administered to persons
residing in other territories or with
missing residential information

*Sourced from the Australian Immunisation Register. Includes all persons vaccinated at participating residential aged care, disability and related industry settings.

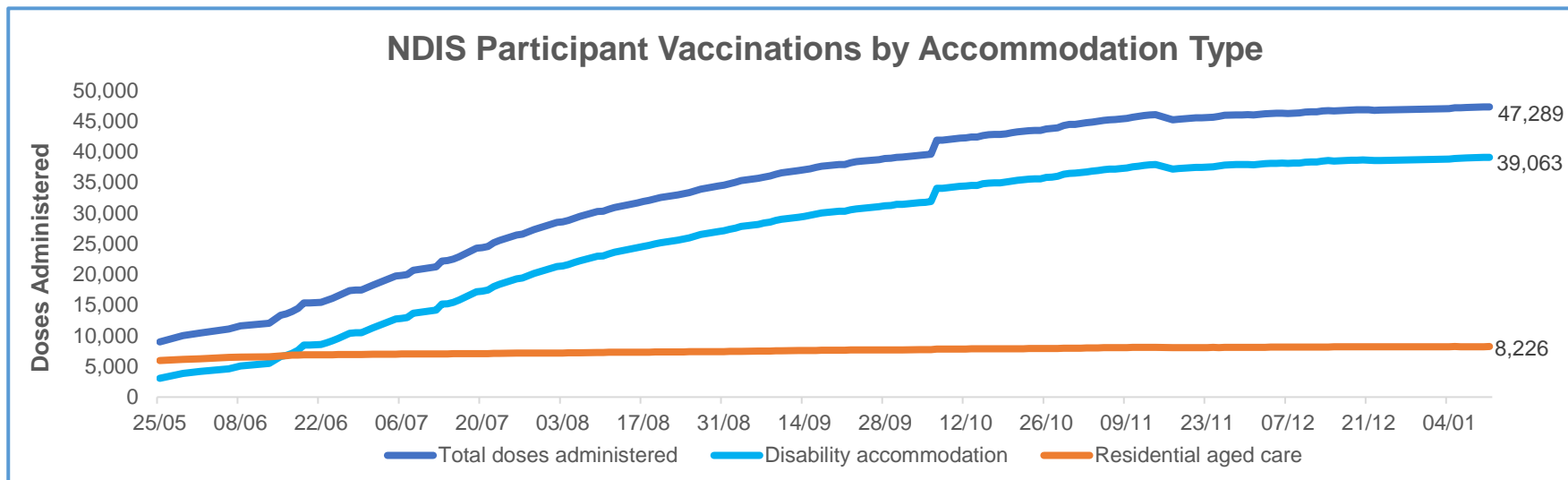
**State level breakdown indicates the residential location and may not align to the state in which the vaccination occurred.

Source: Australian Immunisation Register

Data as at:
11 Jan 2022*

Vaccination rate of people with disability and the disability workforce

Phase 1a – People with disability living in shared accommodation



	Total people with at least one dose	People fully vaccinated	Total number of individuals in cohort	Total doses administered	% People with at least one dose	% People fully vaccinated
NDIS participants living in shared accommodation **	23,975	23,314	27,603	47,289	86.9%	84.5%
NDIS screened workers ***	237,431	232,445	267,670	469,876	88.7%	86.8%

* Updates are available Monday to Friday on participants, and bi-weekly for workers, numbers may be up to four days old.

** Shared accommodation means two or more people with disability living in shared residential accommodation and NDIS participants living in Residential Aged Care accommodation as per the eligibility criteria of Phase 1a. The number of residents changes over time and refinement of methodology can lead to corrections in totals.

*** Total number of workers within the NDIS Commission Worker Screening database who have ever been successfully screened and linked to an NDIS registered provider or participant.

Source: Linkage between National Disability Insurance Agency data, NDIS Quality and Safeguards Commission data and the Australian Immunisation Register.



Residential aged care vaccination rollout

Data as at:
11 Jan 2022

Residential aged care facilities status

100%

Commonwealth facilities visited (2,590 planned sites)

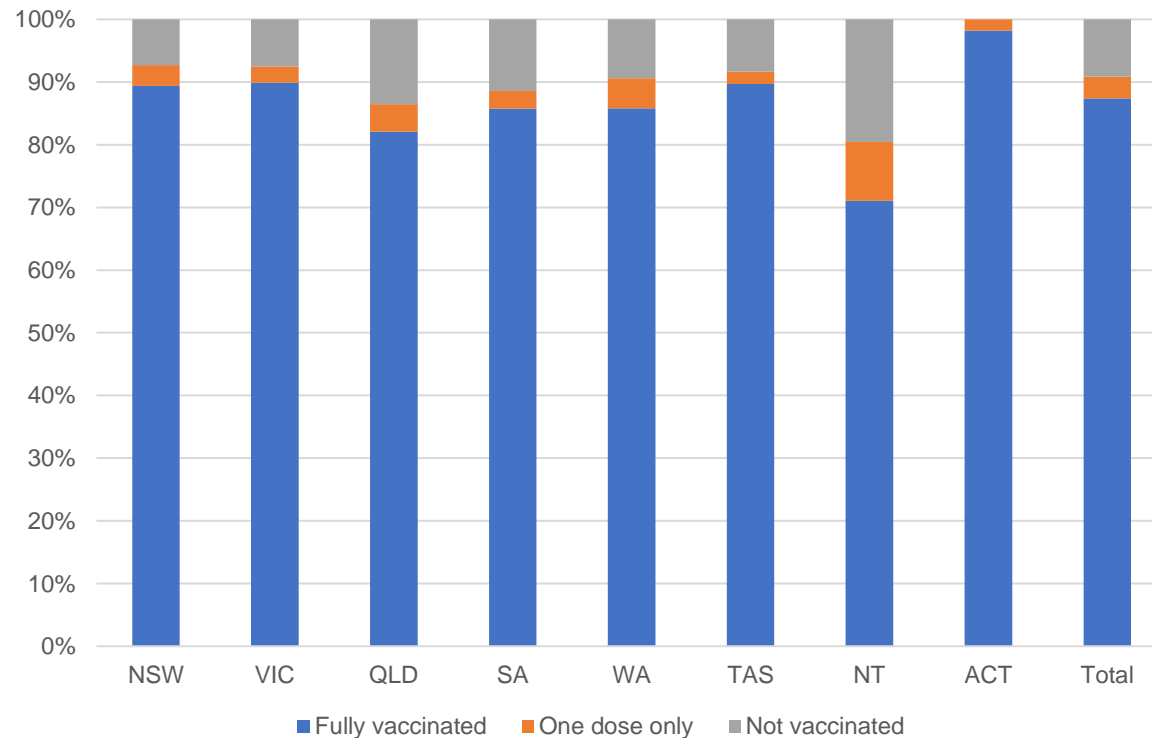
163,048

People fully vaccinated

169,483

People with at least one dose

Aged care resident vaccinations



Aged care worker vaccinations

Jurisdictions	Total workers with at least one dose	Workers fully vaccinated	% Workers with at least one dose	% Workers fully vaccinated
NSW	78,920	78,887	99.0%	99.0%
VIC	71,440	71,440	99.6%	99.6%
QLD	48,691	48,671	99.5%	99.5%
SA	27,603	27,539	99.8%	99.6%
WA	23,859	23,783	99.7%	99.4%
TAS	7,585	7,545	100.0%	99.4%
NT	834	833	100.0%	99.9%
ACT	2,889	2,889	95.9%	95.9%
Total	261,821	261,587	99.4%	99.3%

Source: My Aged Care Portal staff vaccination progress

**Resident vaccination information is reported manually by service providers

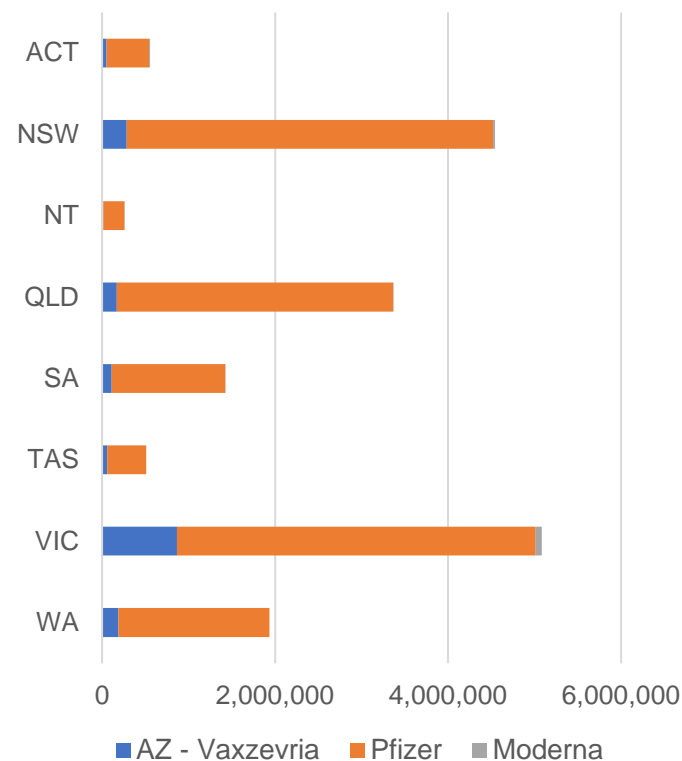
*Status updates are provided by facilities at least once per week. Reporting is updated Monday to Friday to encompass different facility updates being made on different days.

Data is sourced directly from Aged Care Service Providers and is not drawn or closely aligned with data from AIR due to inconsistencies and potential lags in uploading of records.

Data as at:
11 Jan 2022

Jurisdiction administered

Total vaccine doses administered in State and Territory clinics



17,694,224 total vaccine doses administered
in State and Territory clinics as at 11 January
+ 88,175 recorded in the last 24 hours
+ 540,964 recorded in the last 7 days

NSW
4,549,590
(+17,753 daily
increase)

VIC
5,088,970
(+24,963 daily
increase)

QLD
3,372,375
(+23,009 daily
increase)

WA
1,935,319
(+12,446 daily
increase)

TAS
508,984
(+2,963 daily
increase)

SA
1,426,010
(+8,846 daily
increase)

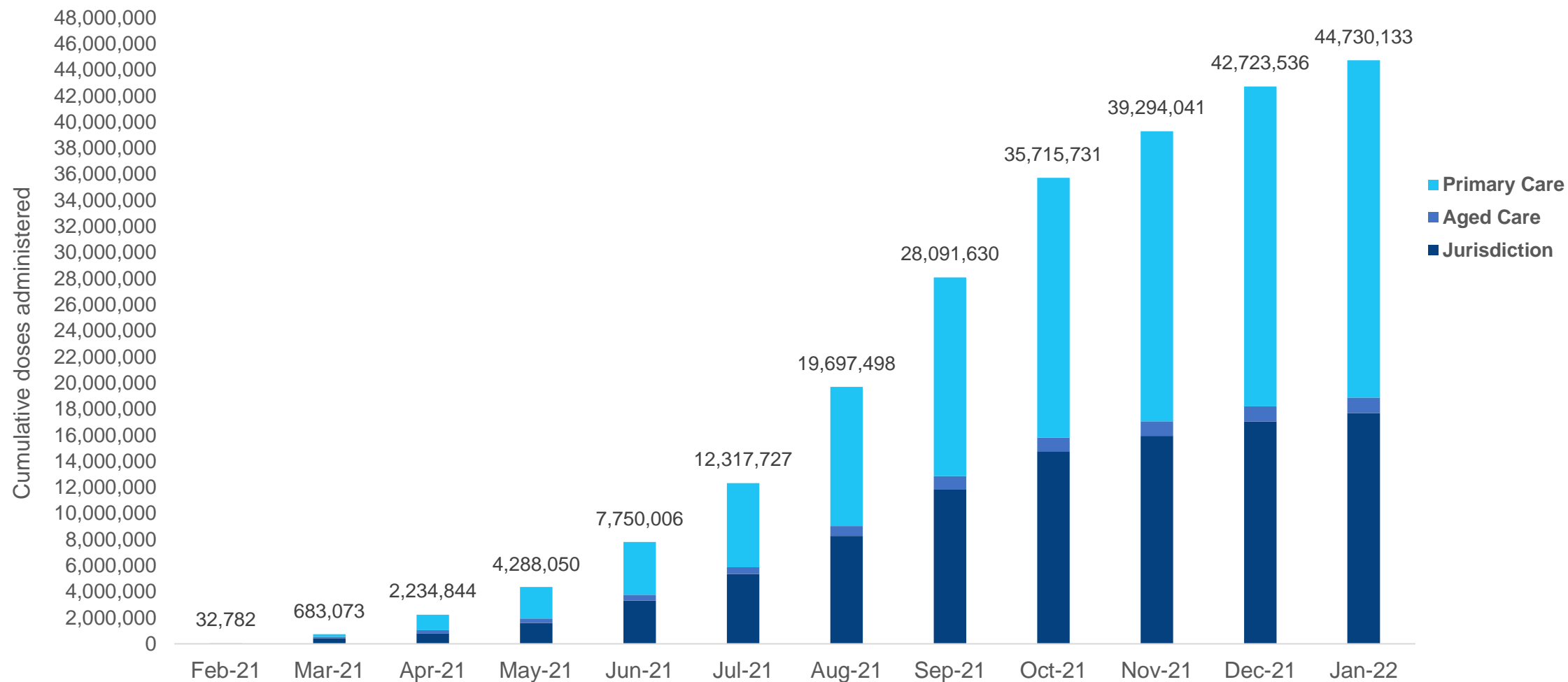
ACT
555,134
(^ daily
increase)

NT
257,842
(+1,594 daily
increase)

*Sourced from the Australian Immunisation Register. Numbers are calculated as difference in daily cumulative reported numbers to allow for historical corrections.
^ACT daily increase – Data not available due to data quality issues.

Cumulative doses administered by channel

Data as at:
11 Jan 2022



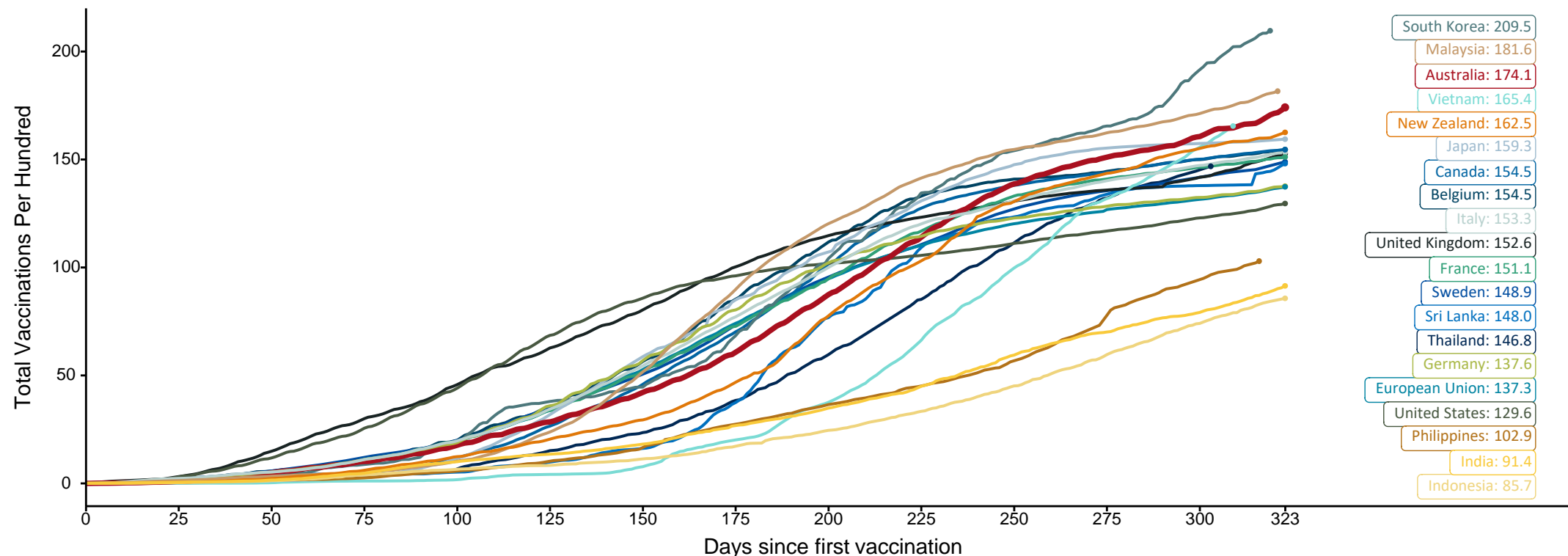
Source: Australian Immunisation Register

Doses at equivalent stages of rollout (Day 323)

Data as at:
11 Jan 2022

The x-axis is truncated at the length of Australia's vaccination program. Countries with intermittent reporting have had their doses per 100 imputed to Australia's current stage of rollout. Israel excluded as it is beyond scale of the graph

Cumulative doses administered (11 Jan): **44,730,133**

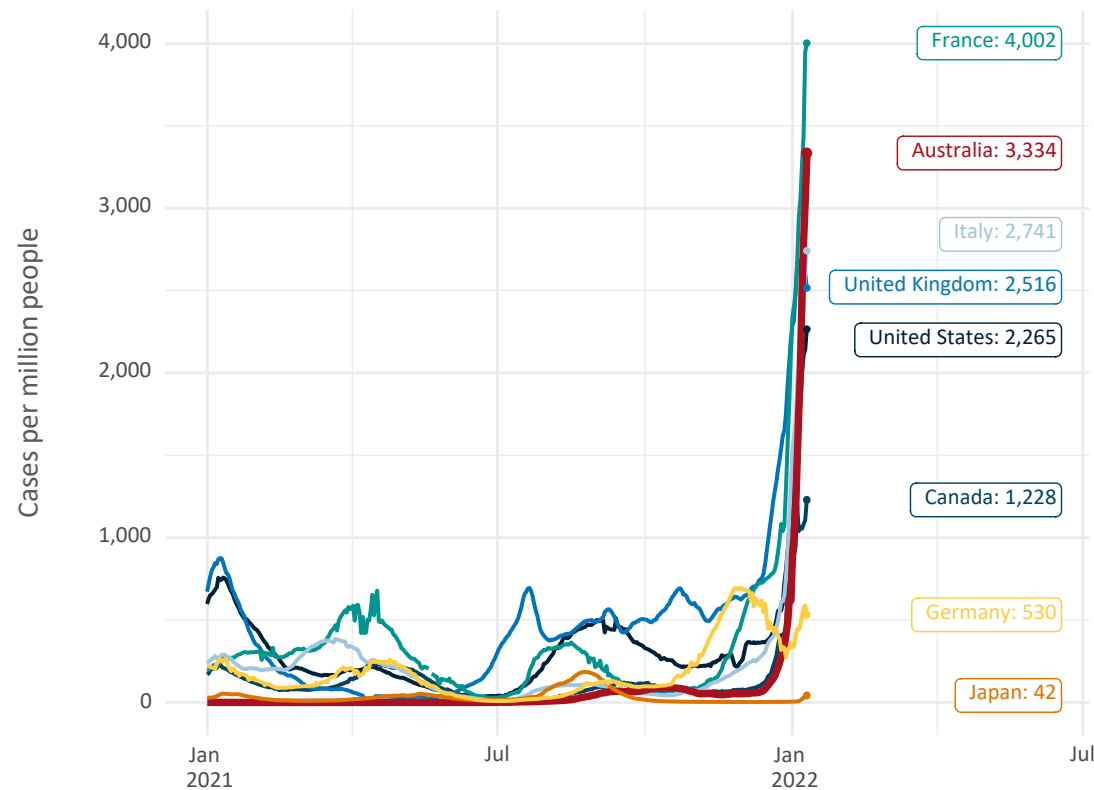


Note: From 15 September 2021, data for Australia includes all doses administered to people 12 and over. Prior to 15 September, data was for 16 and over
Due to data revisions, Singapore has been removed from the chart
Source: Department of Health (Australia), Our World in Data (international)
Latest data: 11 January

Data as at:
11 Jan 2022

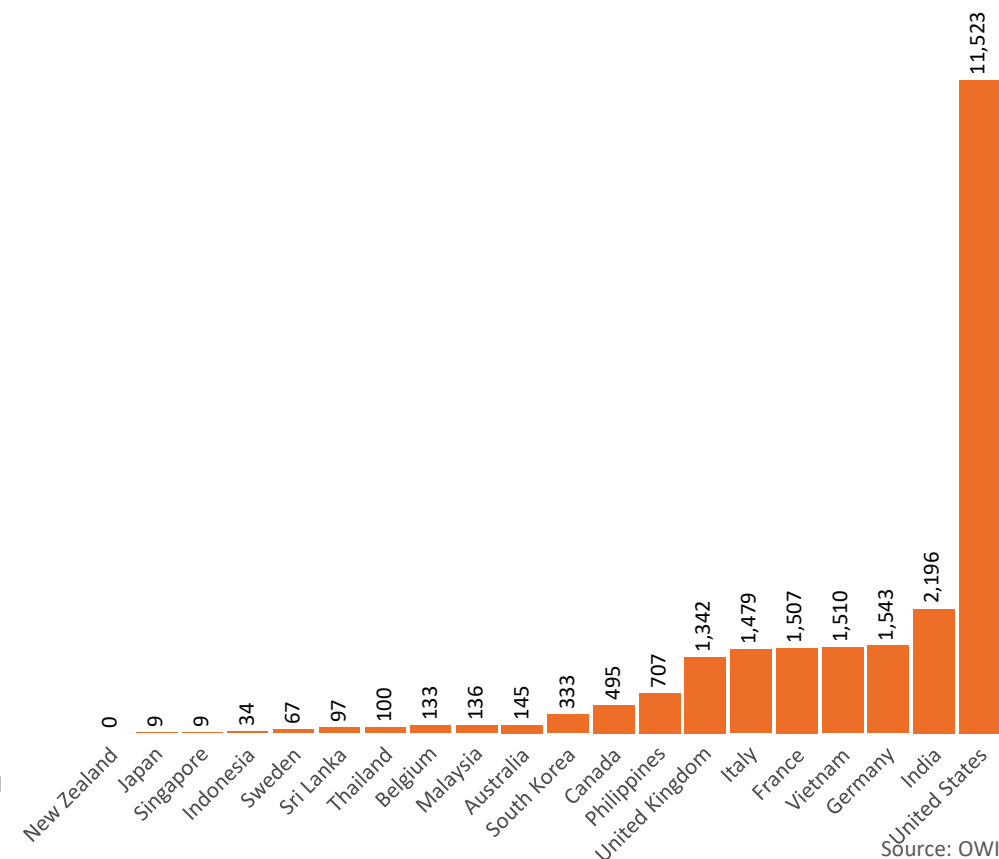
International data – COVID-19

New daily cases per million in 2021, Australia and G7 countries
Smoothed - 7 day average



Source: OWID
Data downloaded: 12 Jan 2022 08:06
Latest data: 10 Jan 2022

COVID-19 deaths in past 7 days - Australia and select countries



Source: OWID
Data downloaded: 12 Jan 2022 08:06
Latest data: 10 Jan 2022

Pandemic Response Payments

Australia's COVID-19
Vaccine Roadmap

Data as at midnight:
9 Jan 2022
Updated weekly



COVID Disaster Payment:	5.89 million claims received - 2.19 million individuals paid a total of \$12.59 billion.
\$200 Income Support Payment:	353,000 claims received - 183,000 individuals paid a total of \$268.91 million.
Pandemic Leave Disaster Payment:	261,000 claims received - 170,000 individuals paid a total of \$254.84 million.



COVID Disaster Payment

assisting during a lockdown
event in a Commonwealth
hotspot.

Income Support Payment \$200

for income support
recipients who lost at
least 8 hours of work.

Pandemic Leave Disaster Payment

for those who have to
self-isolate, quarantine
or care.

For more information visit:
servicesaustralia.gov.au

COVID-19 DISASTER PAYMENTS

Victoria

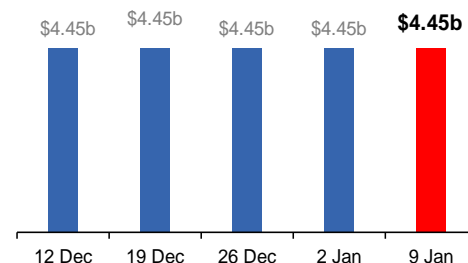
Lockdown (#6) from 6 Aug to 28 Oct
Claiming period ended 9 Dec

**745,000 people have received at least
one COVID Disaster Payment.**

\$4.45b paid out as at 9 Jan 2022.

**\$5,000 paid in initial and reoccurring
payments in the week ending
9 Jan 2022.**

Cumulative payments made by State since
activation on 8 Jun 2021.



Northern Territory

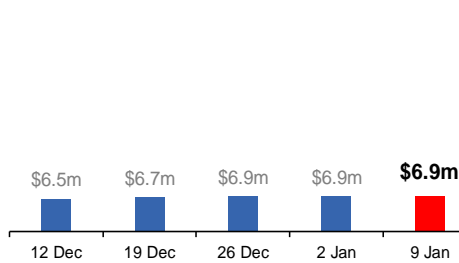
Lockdown (#3) from 16 Nov to 22 Nov
Claiming period ends 27 Dec

**7,500 people have received at least one
COVID Disaster Payment.**

\$6.9m paid out as at 9 Jan 2022.

**\$1,000 paid in initial payments in the
week ending 9 Jan 2022.**

Cumulative payments made by Territory since
activation on 25 Aug 2021.



New South Wales

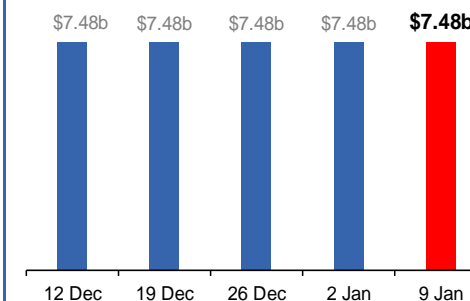
Lockdown from 24 Jun to 10 Oct
Claiming period ended 27 Nov

**1.08m people have received at least
one COVID Disaster Payment.**

\$7.48b paid out as at 9 Jan 2022.

**\$5,000 paid in initial and reoccurring
payments in the week ending
9 Jan 2022.**

Cumulative payments made by State since
activation on 1 Jul 2021.



Australian Capital Territory

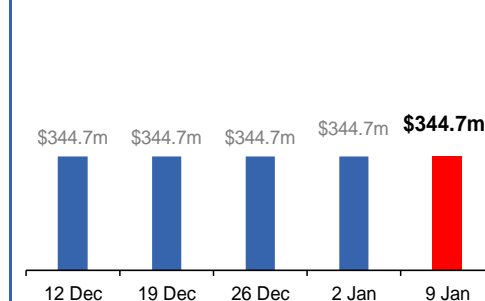
Lockdown from 12 Aug to 14 Oct
Claiming period ended 25 Nov

**65,000 people have received at least
one COVID Disaster Payment.**

\$344.7m paid out as at 9 Jan 2022.

**\$0 paid in initial and reoccurring
payments in the week ending
9 Jan 2022.**

Cumulative payments made by Territory since
activation on 20 Aug 2021.



Data as at midnight:
9 Jan 2022
Updated weekly

Pandemic Response Payments (continued)

COVID-19 DISASTER PAYMENTS


Tasmania

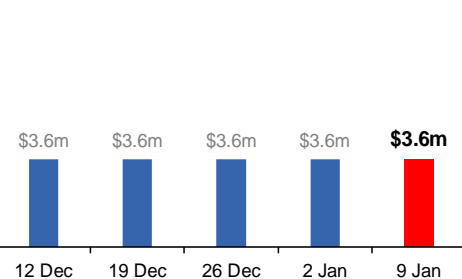
Lockdown from 15 Oct to 18 Oct
Claiming period ended 12 Nov

6,900 people have received at least one COVID Disaster Payment.

\$3.6m paid out as at 9 Jan 2022.

\$0 paid in initial and reoccurring payments in the week ending 9 Jan 2022.

 Cumulative payments made by State since activation on 22 Oct 2021.




Queensland

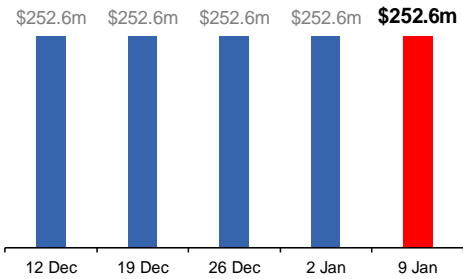
Lockdown from 31 Jul to 11 Aug
Claiming period ended 28 Aug

196,000 people have received at least one COVID Disaster Payment.

\$252.6m paid out as at 9 Jan 2022.

\$600 paid in initial and reoccurring payments in the week ending 9 Jan 2022.

 Cumulative payments made by State since activation on 7 Aug 2021.




South Australia

Lockdown from 21 to 27 Jul
Claiming period ended 17 Aug

86,000 people have received at least one COVID Disaster Payment.

\$48.2m paid out as at 9 Jan 2022.

\$600 paid in initial and reoccurring payments in the week ending 9 Jan 2022.

 Cumulative payments made by State since activation on 28 Jul 2021.

