



CURRENT STATUS OF CONFIRMED CASES



128



ACT	NSW	NT	QLD	SA	TAS	VIC	WA
0	69	0	1	4	0	54	0

1,591



ACT	NSW	NT	QLD	SA	TAS	VIC	WA
6	834	152	127	44	0	428	0

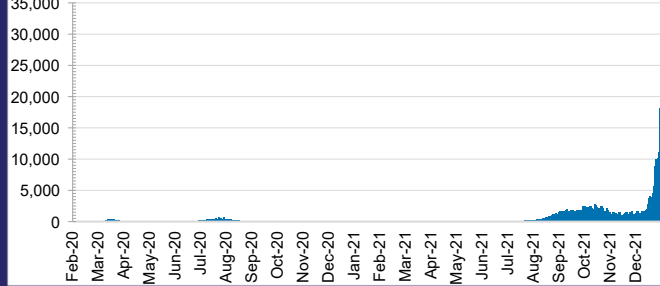
54,958,964



0.7% POSITIVE

ACT	NSW	NT	QLD
742,831	25,169,694	594,996	5,468,660
POSITIVE	POSITIVE	POSITIVE	POSITIVE
0.5%	0.7%	0.1%	0.3%
SA	TAS	VIC	WA
3,087,925	451,734	17,357,466	2,085,658
POSITIVE	POSITIVE	POSITIVE	POSITIVE
0.4%	0.2%	1.0%	0.1%

DAILY NUMBER OF REPORTED CASES

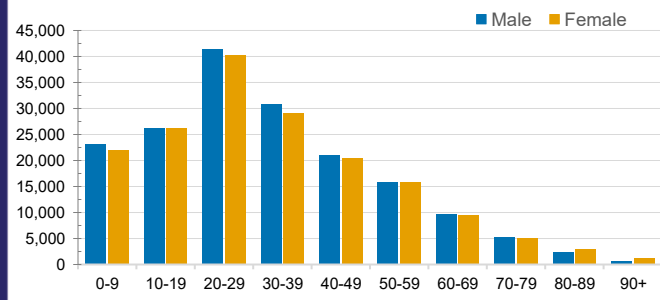


CASES IN AGED CARE SERVICES

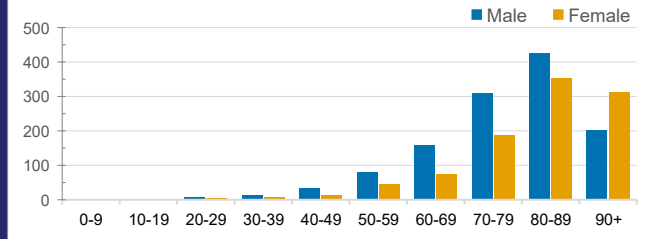
Confirmed Cases	Australia	ACT	NSW	NT	QLD	SA	TAS	VIC	WA
Residential Care Recipients	4078 [1983] (915)	19 [8] (7)	786 [123] (111)	0	40 (1)	0	1 (1)	3162 [1806] (792)	0
In Home Care Recipients	187 [76] (13)	0	44 [15] (3)	0	11 [8]	1 [1]	5 [3] (2)	125 [49] (7)	1 (1)

Cases in care recipients [recovered] (deaths)

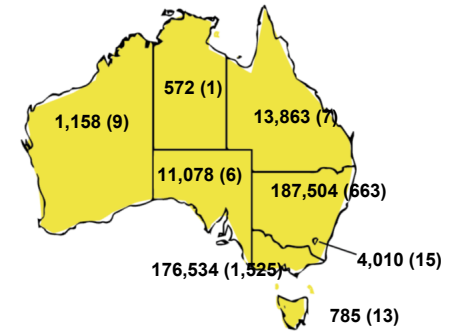
CASES BY AGE GROUP AND SEX



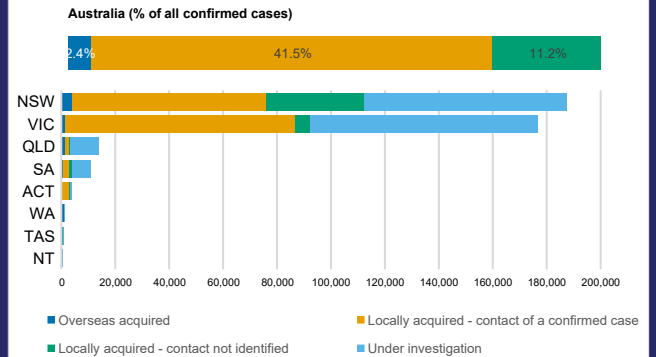
DEATHS BY AGE GROUP AND SEX



CASES (DEATHS) BY STATE AND TERRITORIES



CASES BY SOURCE OF INFECTION



PUBLIC HEALTH RESPONSE MEASURE

