



**CURRENT STATUS OF CONFIRMED CASES**



**171**



ACT	NSW	NT	QLD	SA	TAS	VIC	WA
2	95	0	9	9	0	56	0

**2,158**



ACT	NSW	NT	QLD	SA	TAS	VIC	WA
11	1,205	177	180	94	0	491	0

**55,634,728**

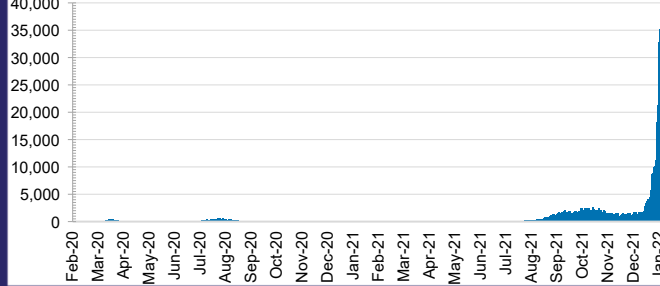


**0.9% POSITIVE**

**TOTAL TESTS  
CONDUCTED**

ACT	NSW	NT	QLD
754,008	25,475,756	603,079	5,589,172
POSITIVE	POSITIVE	POSITIVE	POSITIVE
0.7%	1.0%	0.1%	0.4%
SA	TAS	VIC	WA
3,152,292	461,851	17,512,912	2,085,658
POSITIVE	POSITIVE	POSITIVE	POSITIVE
0.6%	0.5%	1.1%	0.1%

**DAILY NUMBER OF REPORTED CASES**

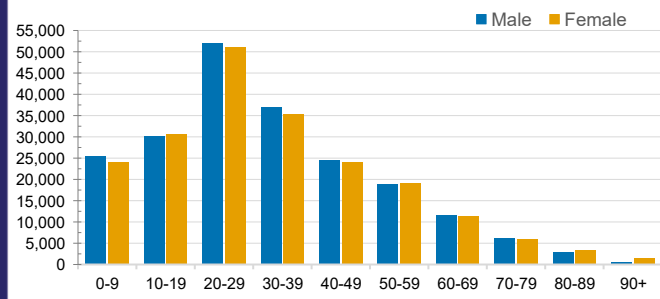


**CASES IN AGED CARE SERVICES**

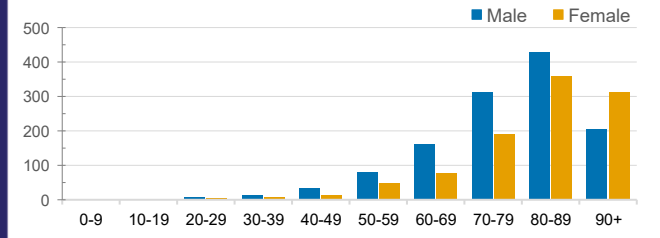
Confirmed Cases	Australia	ACT	NSW	NT	QLD	SA	TAS	VIC	WA
Residential Care Recipients	4078 [1983] (915)	19 [8] (7)	786 [123] (111)	0	40 (1)	0	1 (1)	3162 [1806] (792)	0
In Home Care Recipients	187 [76] (13)	0	44 [15] (3)	0	11 [8]	1 [1]	5 [3] (2)	125 [49] (7)	1 (1)

Cases in care recipients [recovered] (deaths)

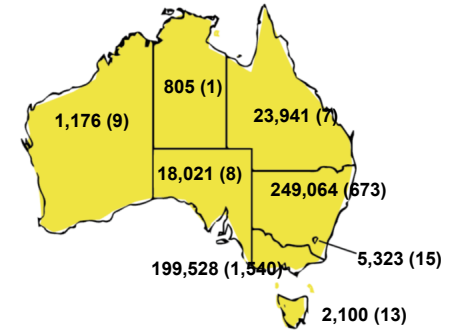
**CASES BY AGE GROUP AND SEX**



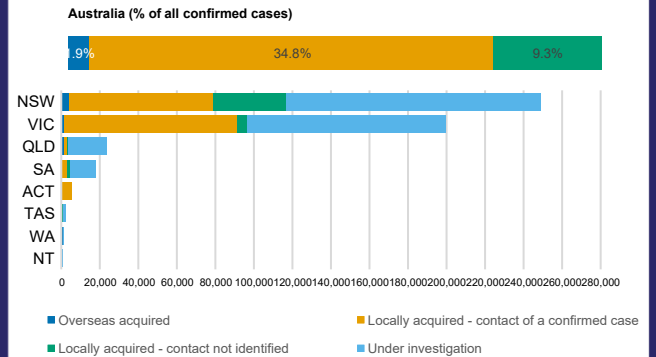
**DEATHS BY AGE GROUP AND SEX**



**CASES (DEATHS) BY STATE AND TERRITORIES**



**CASES BY SOURCE OF INFECTION**



**PUBLIC HEALTH RESPONSE MEASURE**

