



CURRENT STATUS OF CONFIRMED CASES



391



ACT	NSW	NT	QLD	SA	TAS	VIC	WA
5	189	3	54	24	1	114	1



5,021

ACT	NSW	NT	QLD	SA	TAS	VIC	WA
66	2,737	105	818	285	19	988	3

60,702,677

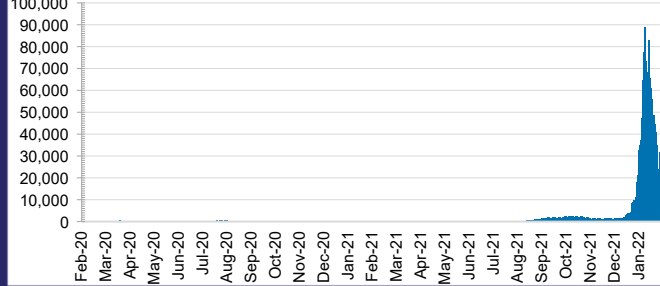


3.1% POSITIVE

ACT	NSW	NT	QLD
845,394	27,603,057	656,246	6,435,105
POSITIVE	POSITIVE	POSITIVE	POSITIVE
3.1%	3.1%	2.0%	4.4%

SA	TAS	VIC	WA
3,573,070	520,500	18,830,892	2,238,413
POSITIVE	POSITIVE	POSITIVE	POSITIVE
2.8%	2.6%	3.0%	0.1%

DAILY NUMBER OF REPORTED CASES

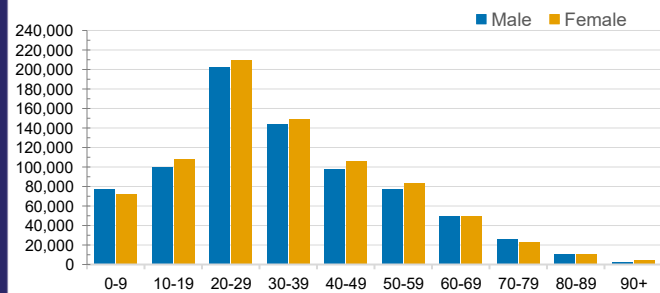


CASES IN AGED CARE SERVICES

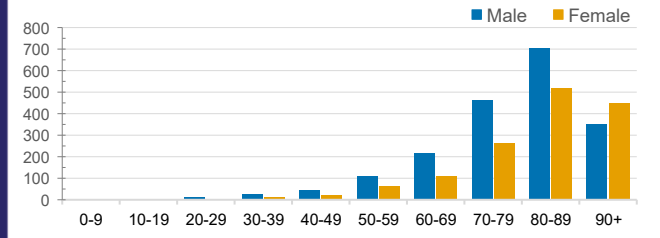
Confirmed Cases	Australia	ACT	NSW	NT	QLD	SA	TAS	VIC	WA
Residential Care Recipients	13998 (1356)	82 (8)	5396 (328)	19	2038 (90)	1028 (70)	130 (2)	5305 (858)	0
In Home Care Recipients	205 (13)	0	45 (3)	0	15	1	5 (2)	138 (7)	1 (1)

Cases in care recipients (deaths)

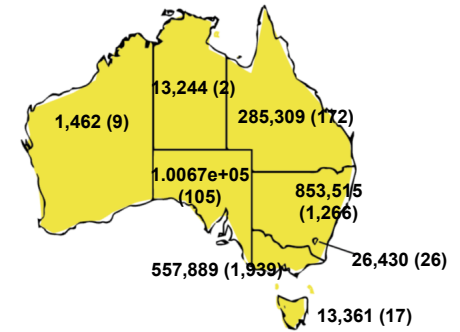
CASES BY AGE GROUP AND SEX



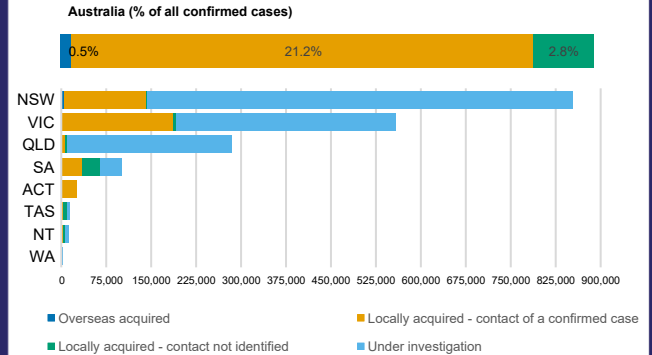
DEATHS BY AGE GROUP AND SEX



CASES (DEATHS) BY STATE AND TERRITORIES



CASES BY SOURCE OF INFECTION



PUBLIC HEALTH RESPONSE MEASURE

