



**CURRENT STATUS OF CONFIRMED CASES**



**372**



ACT	NSW	NT	QLD	SA	TAS	VIC	WA
5	175	3	47	26	2	113	1



**5,227**

ACT	NSW	NT	QLD	SA	TAS	VIC	WA
67	2,794	71	889	288	28	1,089	1

**60,451,094**



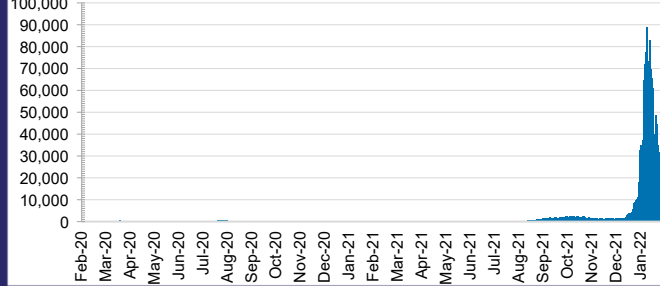
**2.9% POSITIVE**

ACT	NSW	NT	QLD
839,234	27,499,879	653,302	6,389,792
POSITIVE	POSITIVE	POSITIVE	POSITIVE
3.0%	2.8%	1.0%	4.3%

SA	TAS	VIC	WA
3,553,667	517,812	18,775,207	2,222,201
POSITIVE	POSITIVE	POSITIVE	POSITIVE
2.7%	2.5%	2.9%	0.1%

**DAILY NUMBER OF REPORTED CASES**

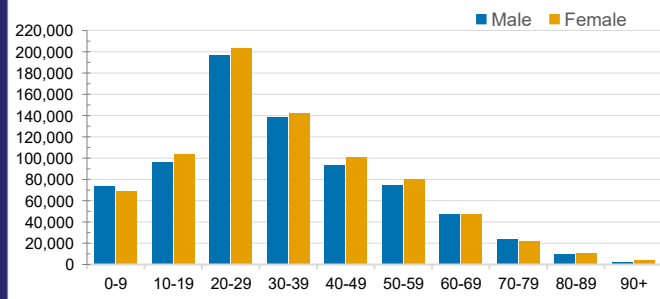


**CASES IN AGED CARE SERVICES**

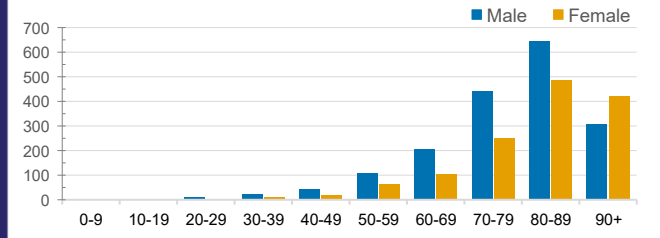
Confirmed Cases	Australia	ACT	NSW	NT	QLD	SA	TAS	VIC	WA
Residential Care Recipients	13180 (1176)	79 (8)	5112 (245)	19	1713 (50)	966 (43)	107 (2)	5184 (832)	0
In Home Care Recipients	205 (13)	0	45 (3)	0	15	1	5 (2)	138 (7)	1 (1)

Cases in care recipients (deaths)

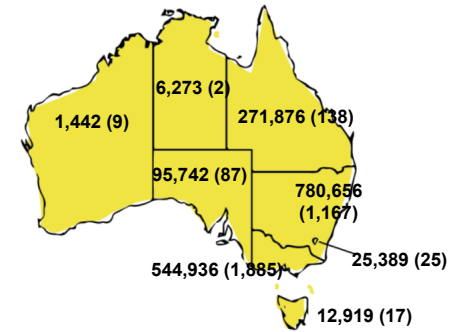
**CASES BY AGE GROUP AND SEX**



**DEATHS BY AGE GROUP AND SEX**

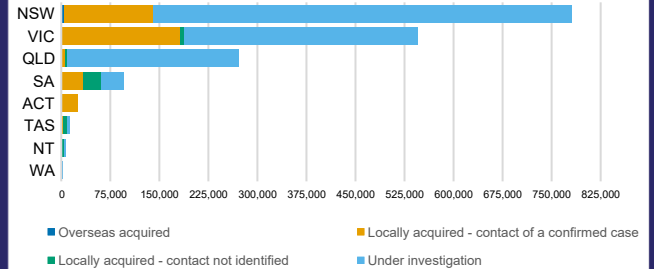


**CASES (DEATHS) BY STATE AND TERRITORIES**



**CASES BY SOURCE OF INFECTION**

Australia (% of all confirmed cases)



**PUBLIC HEALTH RESPONSE MEASURE**

Proportion of total cases under investigation

