



**CURRENT STATUS OF CONFIRMED CASES**



**395**



ACT	NSW	NT	QLD	SA	TAS	VIC	WA
3	183	3	51	32	3	119	1



**5,390**

ACT	NSW	NT	QLD	SA	TAS	VIC	WA
67	2,943	72	928	287	35	1,057	1

**60,297,892**

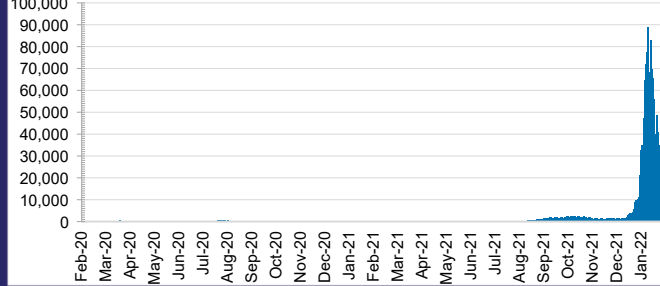


**TOTAL TESTS CONDUCTED**

**2.8% POSITIVE**

ACT	NSW	NT	QLD
836,449	27,432,133	652,428	6,357,884
POSITIVE	POSITIVE	POSITIVE	POSITIVE
3.0%	2.8%	0.9%	4.1%
SA	TAS	VIC	WA
3,540,180	516,245	18,740,372	2,222,201
POSITIVE	POSITIVE	POSITIVE	POSITIVE
2.6%	2.5%	2.9%	0.1%

**DAILY NUMBER OF REPORTED CASES**

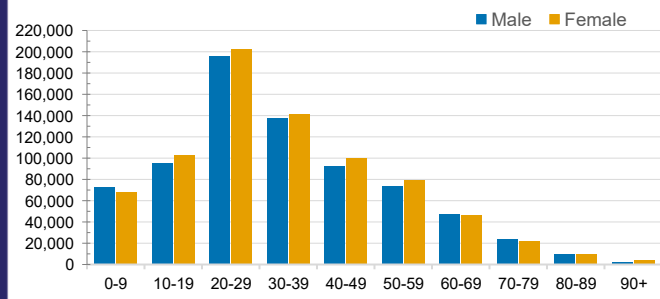


**CASES IN AGED CARE SERVICES**

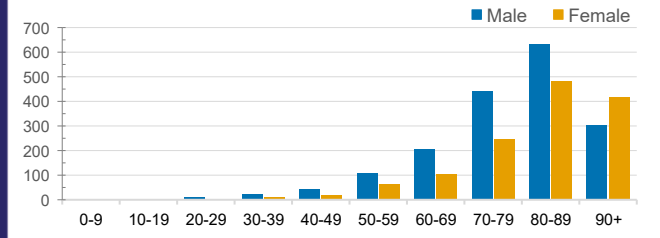
Confirmed Cases	Australia	ACT	NSW	NT	QLD	SA	TAS	VIC	WA
Residential Care Recipients	13180 (1176)	79 (8)	5112 (245)	19	1713 (50)	966 (43)	107 (2)	5184 (832)	0
In Home Care Recipients	205 (13)	0	45 (3)	0	15	1	5 (2)	138 (7)	1 (1)

Cases in care recipients (deaths)

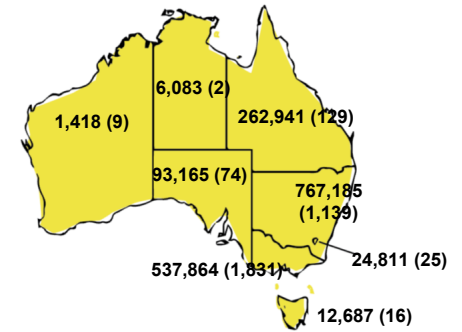
**CASES BY AGE GROUP AND SEX**



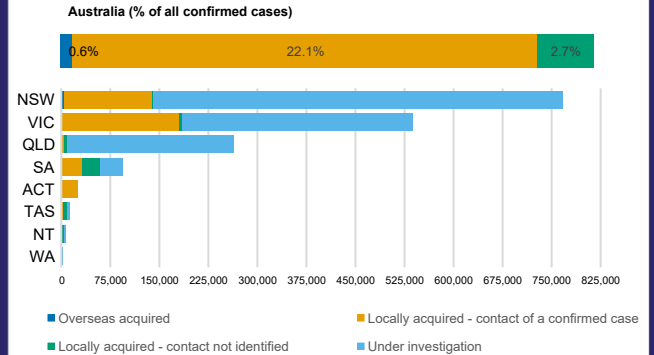
**DEATHS BY AGE GROUP AND SEX**



**CASES (DEATHS) BY STATE AND TERRITORIES**



**CASES BY SOURCE OF INFECTION**



**PUBLIC HEALTH RESPONSE MEASURE**

