



CURRENT STATUS OF CONFIRMED CASES



404



ACT	NSW	NT	QLD	SA	TAS	VIC	WA
3	196	4	50	29	3	119	0

5,173



ACT	NSW	NT	QLD	SA	TAS	VIC	WA
68	2,816	78	878	294	41	998	0

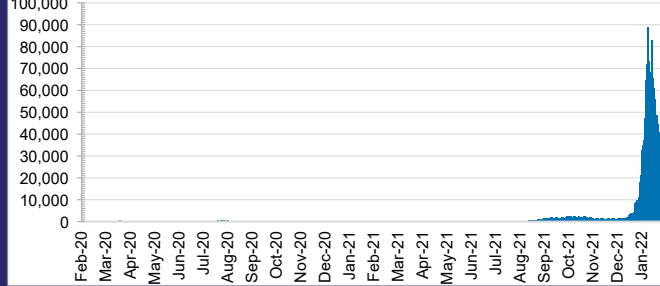
60,163,582



2.8% POSITIVE

ACT	NSW	NT	QLD
833,611	27,374,617	651,509	6,337,344
POSITIVE	POSITIVE	POSITIVE	POSITIVE
2.9%	2.8%	0.9%	4.1%
SA	TAS	VIC	WA
3,530,447	514,627	18,709,646	2,211,781
POSITIVE	POSITIVE	POSITIVE	POSITIVE
2.6%	2.4%	2.8%	0.1%

DAILY NUMBER OF REPORTED CASES

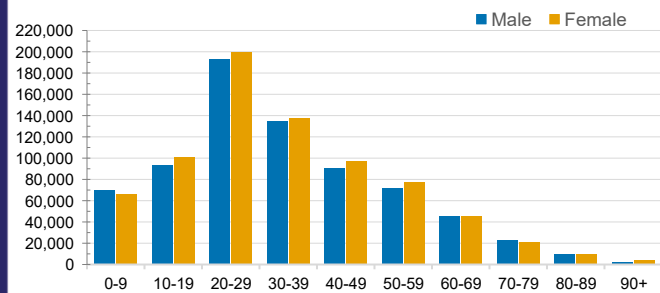


CASES IN AGED CARE SERVICES

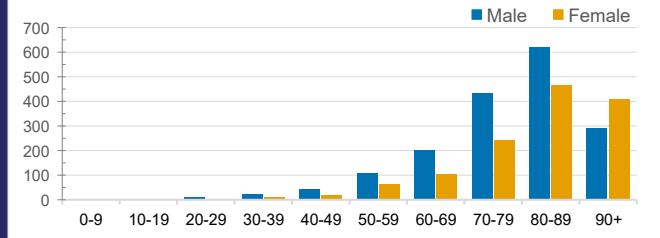
Confirmed Cases	Australia	ACT	NSW	NT	QLD	SA	TAS	VIC	WA
Residential Care Recipients	12775 (1172)	85 (8)	4810 (242)	19	1673 (50)	920 (43)	105 (2)	5163 (827)	0
In Home Care Recipients	205 (13)	0	45 (3)	0	15	1	5 (2)	138 (7)	1 (1)

Cases in care recipients (deaths)

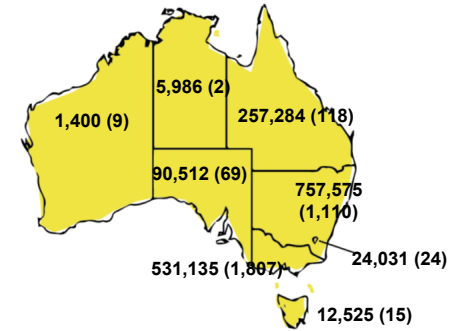
CASES BY AGE GROUP AND SEX



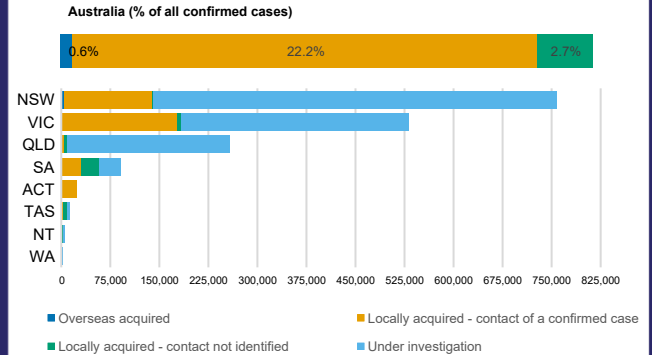
DEATHS BY AGE GROUP AND SEX



CASES (DEATHS) BY STATE AND TERRITORIES



CASES BY SOURCE OF INFECTION



PUBLIC HEALTH RESPONSE MEASURE

