



CURRENT STATUS OF CONFIRMED CASES



148



ACT	NSW	NT	QLD	SA	TAS	VIC	WA
1	83	0	5	7	0	52	0

1,978



ACT	NSW	NT	QLD	SA	TAS	VIC	WA
9	1,069	174	170	82	2	472	0

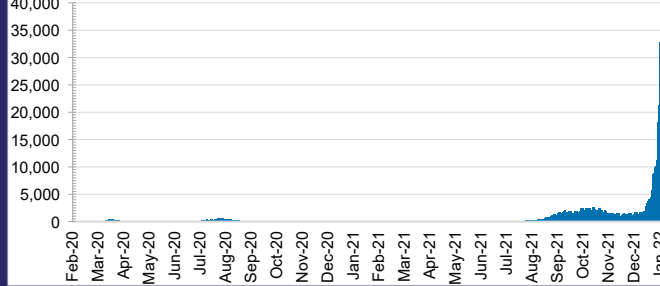
55,435,314



0.8% POSITIVE

ACT	NSW	NT	QLD
750,071	25,378,991	600,929	5,558,371
POSITIVE	POSITIVE	POSITIVE	POSITIVE
0.7%	0.9%	0.1%	0.4%
SA	TAS	VIC	WA
3,132,855	459,695	17,468,744	2,085,658
POSITIVE	POSITIVE	POSITIVE	POSITIVE
0.5%	0.4%	1.1%	0.1%

DAILY NUMBER OF REPORTED CASES

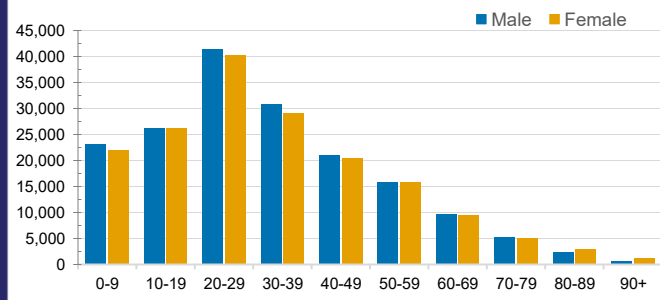


CASES IN AGED CARE SERVICES

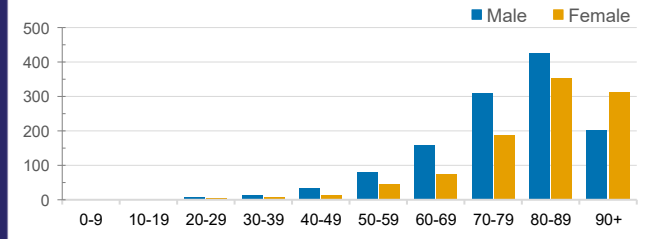
Confirmed Cases	Australia	ACT	NSW	NT	QLD	SA	TAS	VIC	WA
Residential Care Recipients	4078 [1983] (915)	19 [8] (7)	786 [123] (111)	0	40 (1)	0	1 (1)	3162 [1806] (792)	0
In Home Care Recipients	187 [76] (13)	0	44 [15] (3)	0	11 [8]	1 [1]	5 [3] (2)	125 [49] (7)	1 (1)

Cases in care recipients [recovered] (deaths)

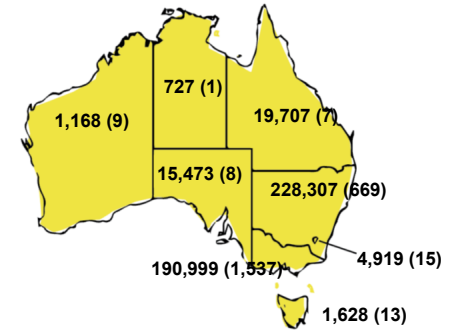
CASES BY AGE GROUP AND SEX



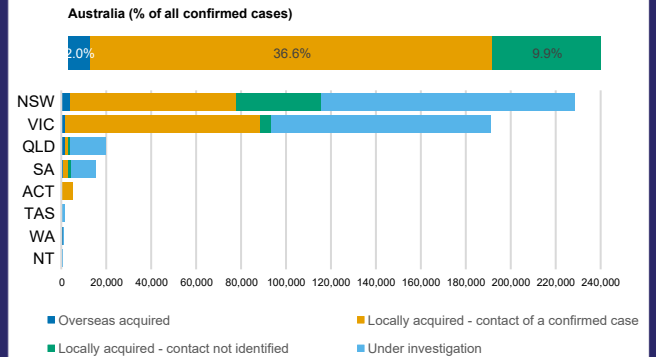
DEATHS BY AGE GROUP AND SEX



CASES (DEATHS) BY STATE AND TERRITORIES



CASES BY SOURCE OF INFECTION



PUBLIC HEALTH RESPONSE MEASURE

