



CURRENT STATUS OF CONFIRMED CASES



424



ACT	NSW	NT	QLD	SA	TAS	VIC	WA
5	217	0	52	23	2	125	0

5,307



ACT	NSW	NT	QLD	SA	TAS	VIC	WA
60	2,863	53	835	294	29	1,173	0

59,362,737

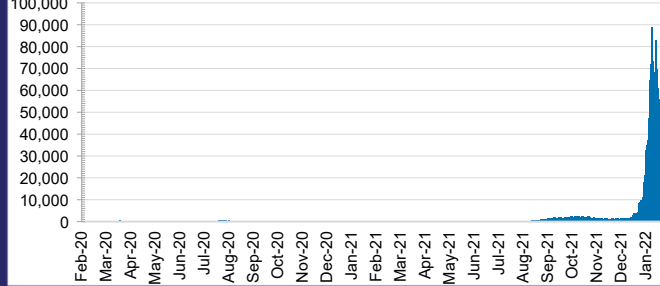


TOTAL TESTS CONDUCTED

2.5% POSITIVE

ACT	NSW	NT	QLD
825,284	27,038,743	643,787	6,175,557
POSITIVE	POSITIVE	POSITIVE	POSITIVE
2.8%	2.6%	0.8%	3.4%
SA	TAS	VIC	WA
3,466,125	507,050	18,522,171	2,184,020
POSITIVE	POSITIVE	POSITIVE	POSITIVE
2.2%	2.3%	2.6%	0.1%

DAILY NUMBER OF REPORTED CASES

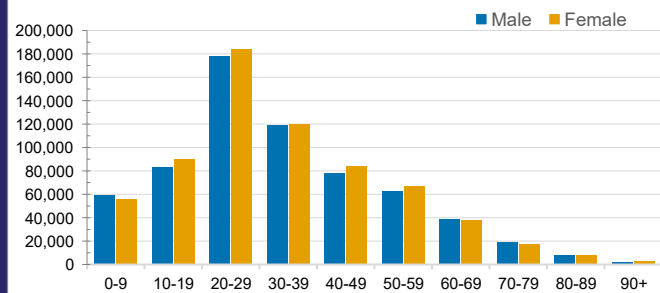


CASES IN AGED CARE SERVICES

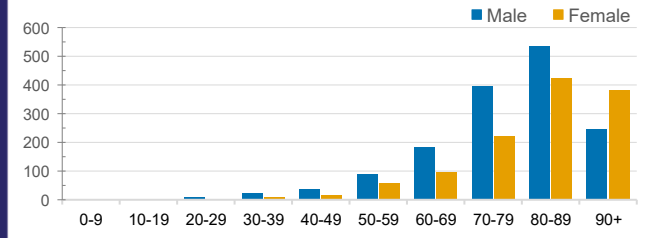
Confirmed Cases	Australia	ACT	NSW	NT	QLD	SA	TAS	VIC	WA
Residential Care Recipients	9260 [2795] (1072)	32 [8] (7)	3472 [419] (199)	12	643 [117] (28)	728 [220] (24)	52 [8] (1)	4321 [2023] (813)	0
In Home Care Recipients	205 [92] (13)	0	45 [22] (3)	0	15 [8]	1 [1]	5 [3] (2)	138 [58] (7)	1 (1)

Cases in care recipients [recovered] (deaths)

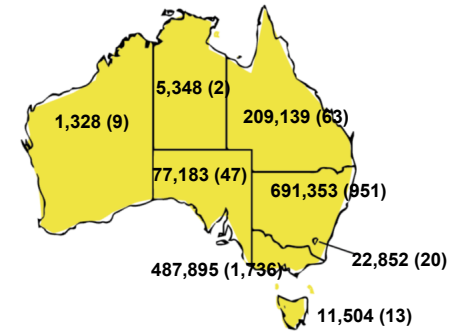
CASES BY AGE GROUP AND SEX



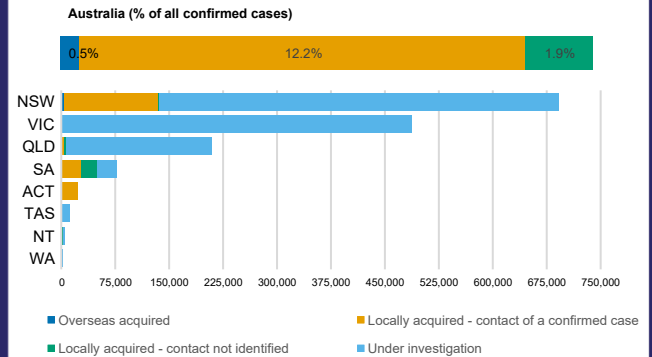
DEATHS BY AGE GROUP AND SEX



CASES (DEATHS) BY STATE AND TERRITORIES



CASES BY SOURCE OF INFECTION



PUBLIC HEALTH RESPONSE MEASURE

