



**CURRENT STATUS OF CONFIRMED CASES**



**419**

CURRENT CASES  
INTENSIVE CARE UNITS (ICU)



ACT	NSW	NT	QLD	SA	TAS	VIC	WA
6	209	1	50	24	2	127	0

**5,025**

CURRENT CASES  
ADMITTED TO HOSPITALS



ACT	NSW	NT	QLD	SA	TAS	VIC	WA
63	2,641	39	819	285	25	1,152	1

**59,157,168**

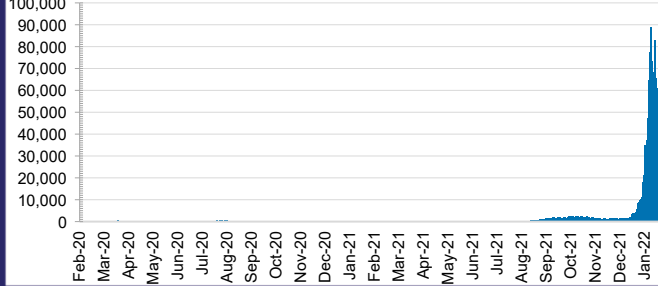
TOTAL TESTS  
CONDUCTED



**2.5%** POSITIVE

ACT	NSW	NT	QLD
822,328	26,953,767	641,594	6,134,256
POSITIVE	POSITIVE	POSITIVE	POSITIVE
2.7%	2.5%	0.8%	3.2%
SA	TAS	VIC	WA
3,450,716	504,677	18,472,333	2,177,497
POSITIVE	POSITIVE	POSITIVE	POSITIVE
2.1%	2.2%	2.6%	0.1%

**DAILY NUMBER OF REPORTED CASES**

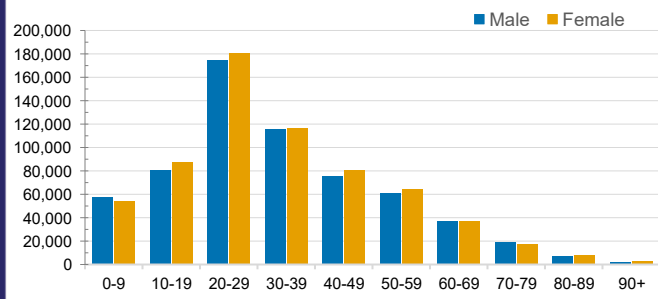


**CASES IN AGED CARE SERVICES**

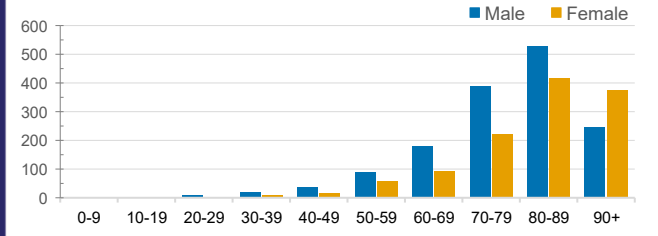
Confirmed Cases	Australia	ACT	NSW	NT	QLD	SA	TAS	VIC	WA
Residential Care Recipients	8931 [2697] (1060)	32 [8] (7)	3347 [397] (195)	8	582 [96] (22)	722 [215] (24)	52 [8] (1)	4188 [1973] (811)	0
In Home Care Recipients	205 [92] (13)	0	45 [22] (3)	0	15 [8]	1 [1]	5 [3] (2)	138 [58] (7)	1 (1)

Cases in care recipients [recovered] (deaths)

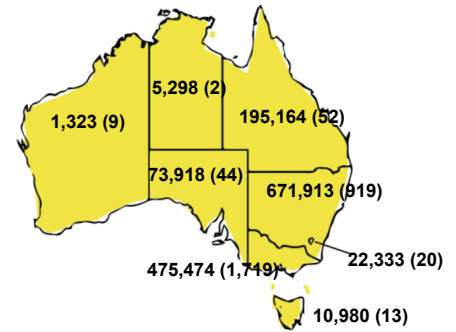
**CASES BY AGE GROUP AND SEX**



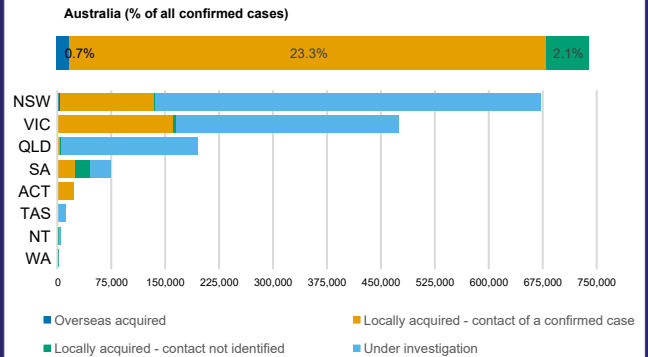
**DEATHS BY AGE GROUP AND SEX**



**CASES (DEATHS) BY STATE AND TERRITORIES**



**CASES BY SOURCE OF INFECTION**



**PUBLIC HEALTH RESPONSE MEASURE**

