



**CURRENT STATUS OF CONFIRMED CASES**



**383**



ACT	NSW	NT	QLD	SA	TAS	VIC	WA
3	192	0	46	26	1	115	0

**4,512**



ACT	NSW	NT	QLD	SA	TAS	VIC	WA
30	2,485	36	649	236	22	1,054	0

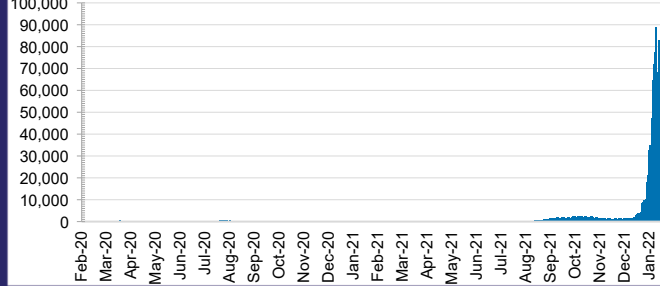
**58,533,307**



**2.3% POSITIVE**

ACT	NSW	NT	QLD
809,116	26,677,704	635,433	6,028,413
POSITIVE	POSITIVE	POSITIVE	POSITIVE
2.4%	2.3%	0.8%	2.7%
SA	TAS	VIC	WA
3,405,244	498,430	18,323,879	2,155,088
POSITIVE	POSITIVE	POSITIVE	POSITIVE
1.9%	2.0%	2.4%	0.1%

**DAILY NUMBER OF REPORTED CASES**

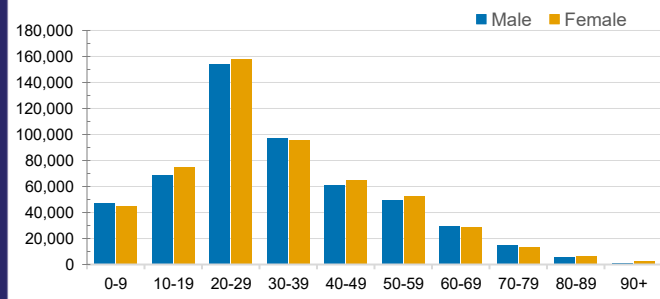


**CASES IN AGED CARE SERVICES**

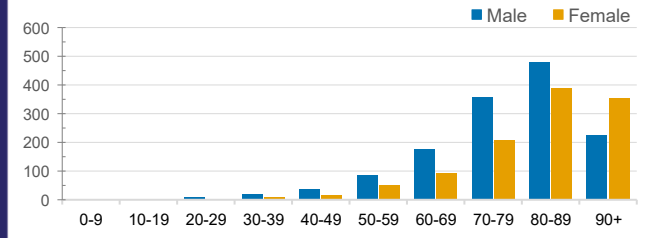
Confirmed Cases	Australia	ACT	NSW	NT	QLD	SA	TAS	VIC	WA
Residential Care Recipients	7321 [2309] (997)	19 [8] (7)	2325 [245] (154)	8	442 [34] (11)	508 [127] (19)	45 [7] (1)	3974 [1888] (805)	0
In Home Care Recipients	205 [92] (13)	0	45 [22] (3)	0	15 [8]	1 [1]	5 [3] (2)	138 [58] (7)	1 (1)

Cases in care recipients [recovered] (deaths)

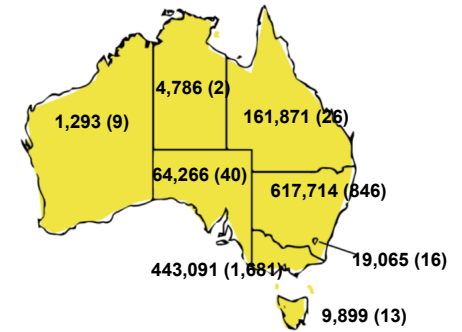
**CASES BY AGE GROUP AND SEX**



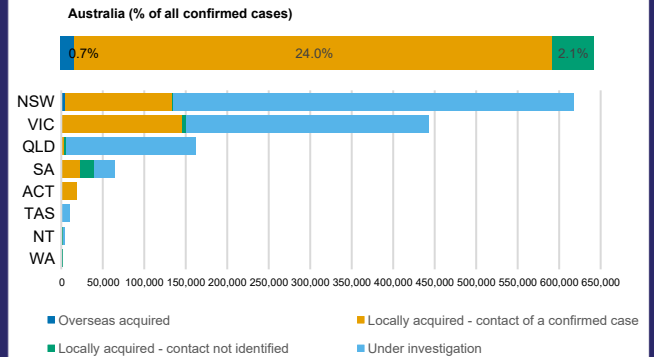
**DEATHS BY AGE GROUP AND SEX**



**CASES (DEATHS) BY STATE AND TERRITORIES**



**CASES BY SOURCE OF INFECTION**



**PUBLIC HEALTH RESPONSE MEASURE**

