



CURRENT STATUS OF CONFIRMED CASES



362



ACT	NSW	NT	QLD	SA	TAS	VIC	WA
3	185	1	41	20	0	112	0

4,446



ACT	NSW	NT	QLD	SA	TAS	VIC	WA
27	2,547	37	589	246	24	976	0

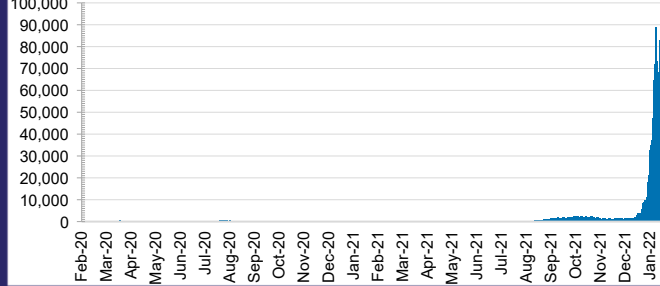
58,321,885



2.2% POSITIVE

ACT	NSW	NT	QLD
805,614	26,595,123	633,457	5,985,728
POSITIVE	POSITIVE	POSITIVE	POSITIVE
2.3%	2.2%	0.7%	2.5%
SA	TAS	VIC	WA
3,386,689	496,259	18,263,927	2,155,088
POSITIVE	POSITIVE	POSITIVE	POSITIVE
1.8%	1.9%	2.3%	0.1%

DAILY NUMBER OF REPORTED CASES

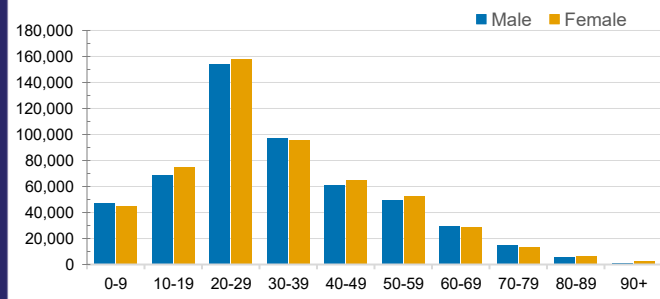


CASES IN AGED CARE SERVICES

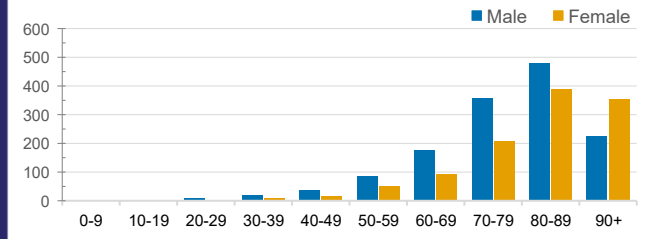
Confirmed Cases	Australia	ACT	NSW	NT	QLD	SA	TAS	VIC	WA
Residential Care Recipients	7321 [2309] (997)	19 [8] (7)	2325 [245] (154)	8	442 [34] (11)	508 [127] (19)	45 [7] (1)	3974 [1888] (805)	0
In Home Care Recipients	205 [92] (13)	0	45 [22] (3)	0	15 [8]	1 [1]	5 [3] (2)	138 [58] (7)	1 (1)

Cases in care recipients [recovered] (deaths)

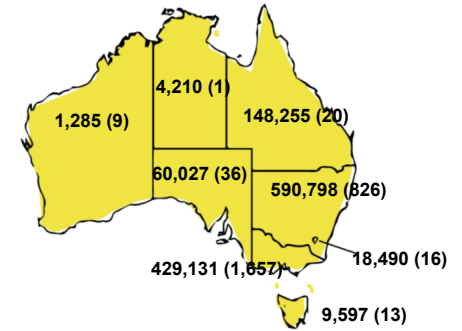
CASES BY AGE GROUP AND SEX



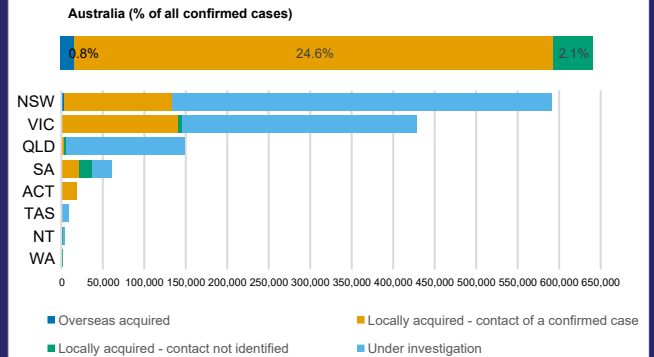
DEATHS BY AGE GROUP AND SEX



CASES (DEATHS) BY STATE AND TERRITORIES



CASES BY SOURCE OF INFECTION



PUBLIC HEALTH RESPONSE MEASURE

