



CURRENT STATUS OF CONFIRMED CASES



324



ACT	NSW	NT	QLD	SA	TAS	VIC	WA
4	159	1	21	21	0	118	0

5,666



ACT	NSW	NT	QLD	SA	TAS	VIC	WA
25	2,029	2,170	419	188	17	818	0

57,343,549

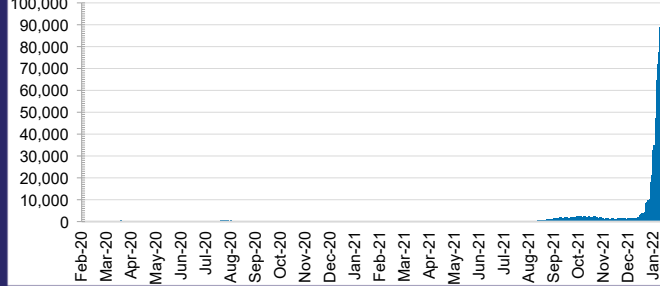


1.7% POSITIVE

ACT	NSW	NT	QLD
784,934	26,192,166	622,625	5,800,484
POSITIVE	POSITIVE	POSITIVE	POSITIVE
1.7%	1.8%	0.4%	1.5%

SA	TAS	VIC	WA
3,304,004	486,644	18,017,776	2,134,916
POSITIVE	POSITIVE	POSITIVE	POSITIVE
1.3%	1.6%	1.9%	0.1%

DAILY NUMBER OF REPORTED CASES

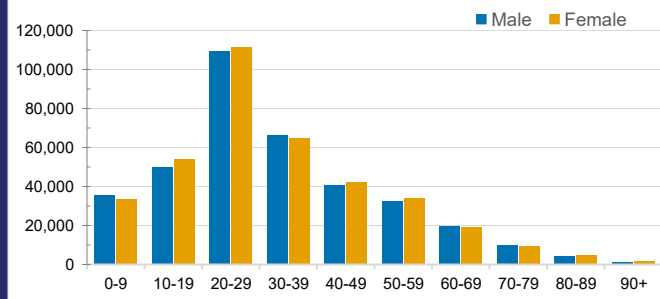


CASES IN AGED CARE SERVICES

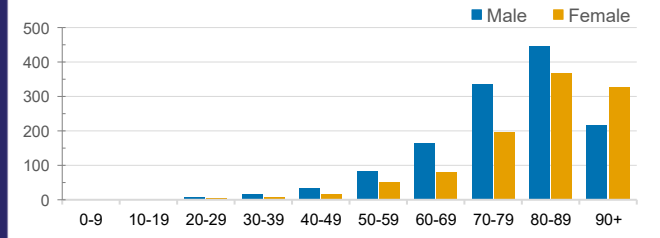
Confirmed Cases	Australia	ACT	NSW	NT	QLD	SA	TAS	VIC	WA
Residential Care Recipients	5628 [2070] (933)	19 [8] (7)	1412 [157] (117)	0	217 [2] (3)	0	34 (1)	3583 [1841] (798)	0
In Home Care Recipients	189 [78] (13)	0	44 [15] (3)	0	11 [8]	1 [1]	5 [3] (2)	127 [51] (7)	1 (1)

Cases in care recipients [recovered] (deaths)

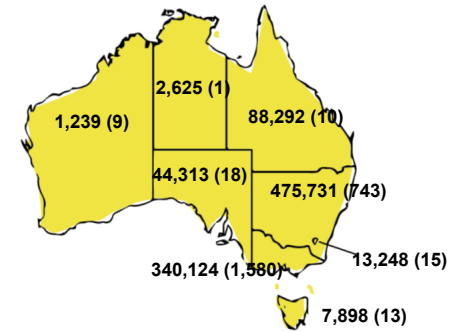
CASES BY AGE GROUP AND SEX



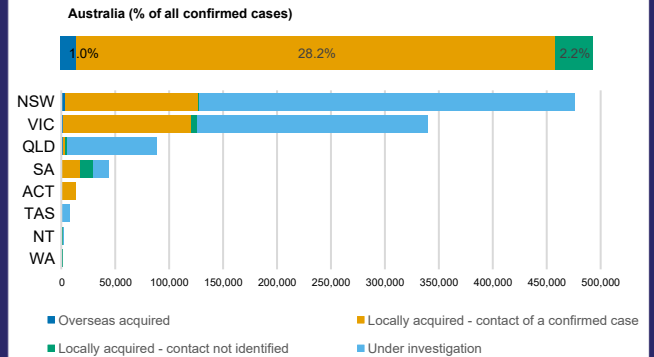
DEATHS BY AGE GROUP AND SEX



CASES (DEATHS) BY STATE AND TERRITORIES



CASES BY SOURCE OF INFECTION



PUBLIC HEALTH RESPONSE MEASURE

