



CURRENT STATUS OF CONFIRMED CASES



135



ACT	NSW	NT	QLD	SA	TAS	VIC	WA
0	79	0	1	4	0	51	0

1,743



ACT	NSW	NT	QLD	SA	TAS	VIC	WA
6	903	162	150	71	0	451	0

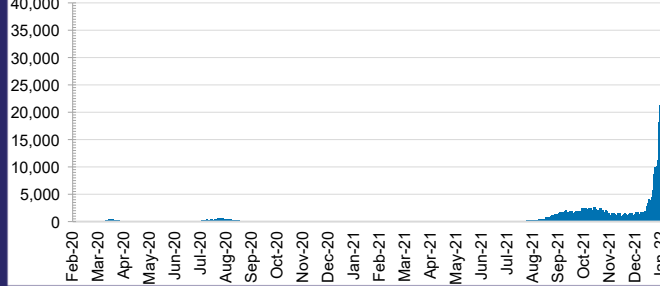
55,233,918



0.8% POSITIVE

ACT	NSW	NT	QLD
747,111	25,288,972	598,453	5,524,389
POSITIVE	POSITIVE	POSITIVE	POSITIVE
0.6%	0.8%	0.1%	0.3%
SA	TAS	VIC	WA
3,111,715	457,128	17,420,492	2,085,658
POSITIVE	POSITIVE	POSITIVE	POSITIVE
0.4%	0.3%	1.1%	0.1%

DAILY NUMBER OF REPORTED CASES

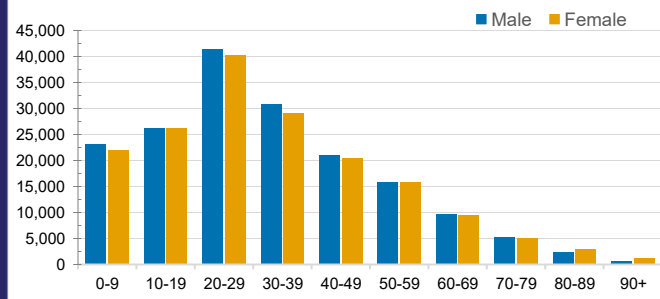


CASES IN AGED CARE SERVICES

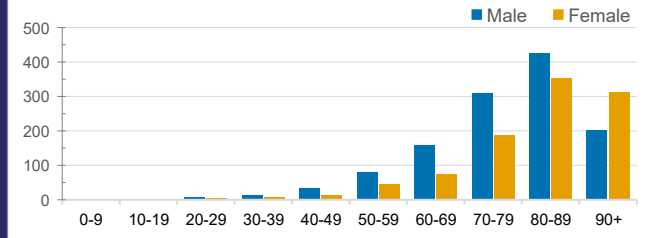
Confirmed Cases	Australia	ACT	NSW	NT	QLD	SA	TAS	VIC	WA
Residential Care Recipients	4078 [1983 (915)]	19 [8 (7)]	786 [123] (111)	0	40 (1)	0	1 (1)	3162 [1806] (792)	0
In Home Care Recipients	187 [76] (13)	0	44 [15] (3)	0	11 [8]	1 [1]	5 [3] (2)	125 [49] (7)	1 (1)

Cases in care recipients [recovered] (deaths)

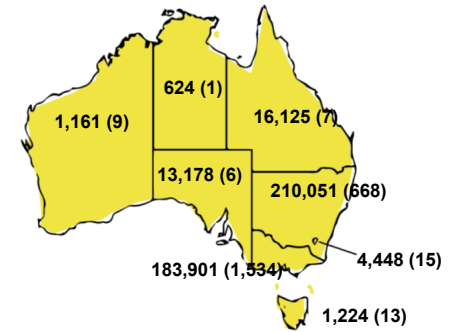
CASES BY AGE GROUP AND SEX



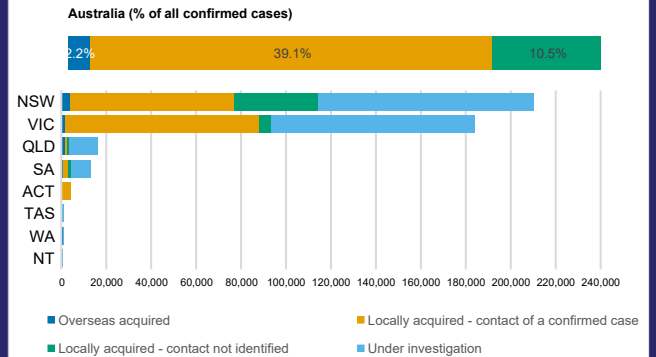
DEATHS BY AGE GROUP AND SEX



CASES (DEATHS) BY STATE AND TERRITORIES



CASES BY SOURCE OF INFECTION



PUBLIC HEALTH RESPONSE MEASURE

