



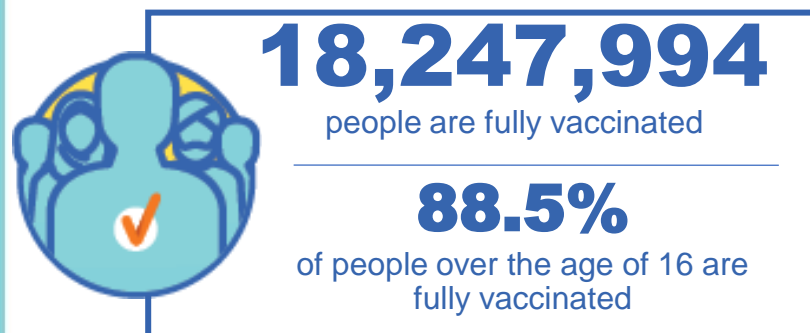
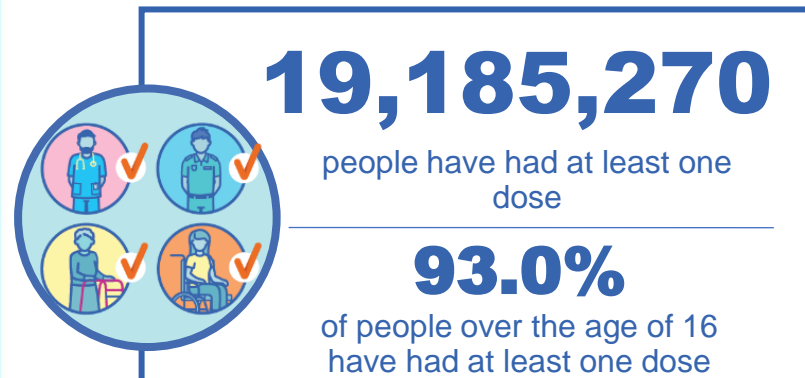
**Australian Government**  
**Operation COVID Shield**

# COVID-19 Vaccine Roll-out

08 December 2021

Data as at:  
07 Dec 2021

## Total vaccine doses



**39,839,258** total vaccine doses administered nationally as at 07 December

**+88,417** recorded in the last 24 hours



\*Administration state breakdown indicates state in which a vaccine was administered

\*\*Overall dose count includes instances of more than two doses per person in a small number of cases.

Source: Australian Immunisation Register

Data as at:  
07 Dec 2021

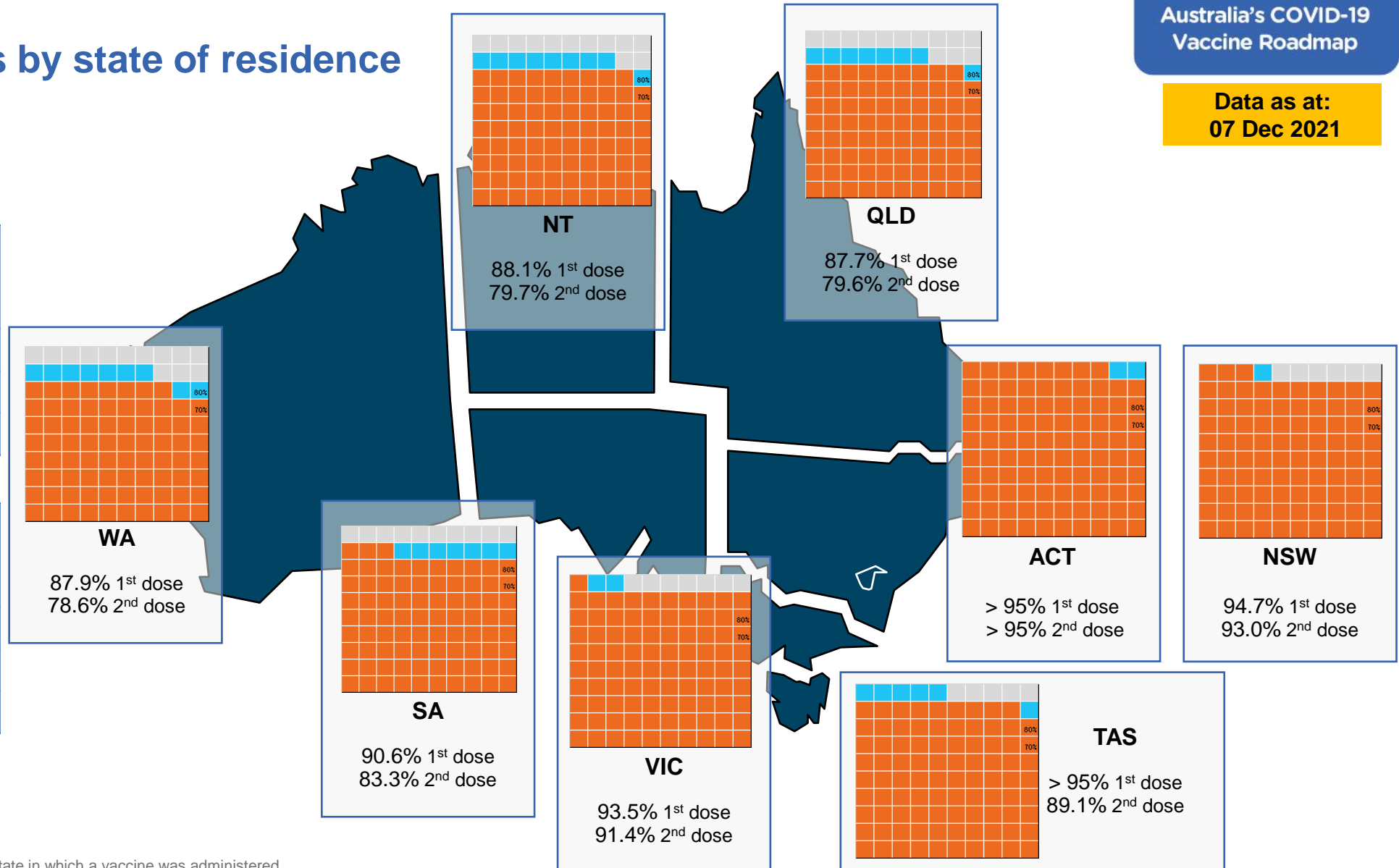
## Vaccinations by state of residence

### First doses

Age	Today	4 weeks ago	8 weeks ago
16+	93.0%	89.9%	84.0%
50+	>95%	>95%	93.0%
70+	>95%	>95%	>95%

### Fully vaccinated

Age	Today	4 weeks ago	8 weeks ago
16+	88.5%	82.0%	65.4%
50+	94.8%	89.8%	78.8%
70+	>95%	94.1%	85.1%



\*Residential state may differ from the state in which a vaccine was administered

## Commonwealth and Jurisdiction vaccine doses administered

Data as at:  
07 Dec 2021



**39,839,258** total vaccine  
doses administered nationally as at 07 December  
**+ 88,417** recorded in the last 24 hours



**16,127,813**  
doses administered by state  
and territory facilities  
**+ 28,668**  
recorded in the last 24 hours



**23,711,445**  
doses administered by  
commonwealth facilities  
**+ 59,749**  
recorded in the last 24 hours  
**22,571,641** total vaccine doses  
administered in primary care settings  
**1,139,804** total vaccine doses  
administered in aged care and disability  
settings

NSW	Jurisdictions	Commonwealth
Cumulative	4,230,186	8,798,841
Daily increase	2,759	11,135

VIC	Jurisdictions	Commonwealth
Cumulative	4,785,518	5,990,845
Daily increase	3,513	8,587

QLD	Jurisdictions	Commonwealth
Cumulative	2,985,371	4,434,257
Daily increase	10,970	22,085

WA	Jurisdictions	Commonwealth
Cumulative	1,695,680	2,045,232
Daily increase	4,228	9,055

TAS	Jurisdictions	Commonwealth
Cumulative	466,071	398,465
Daily increase	1,127	2,223

SA	Jurisdictions	Commonwealth
Cumulative	1,241,046	1,404,079
Daily increase	3,356	5,785

ACT	Jurisdictions	Commonwealth
Cumulative	492,907	478,990
Daily increase	1,705	446

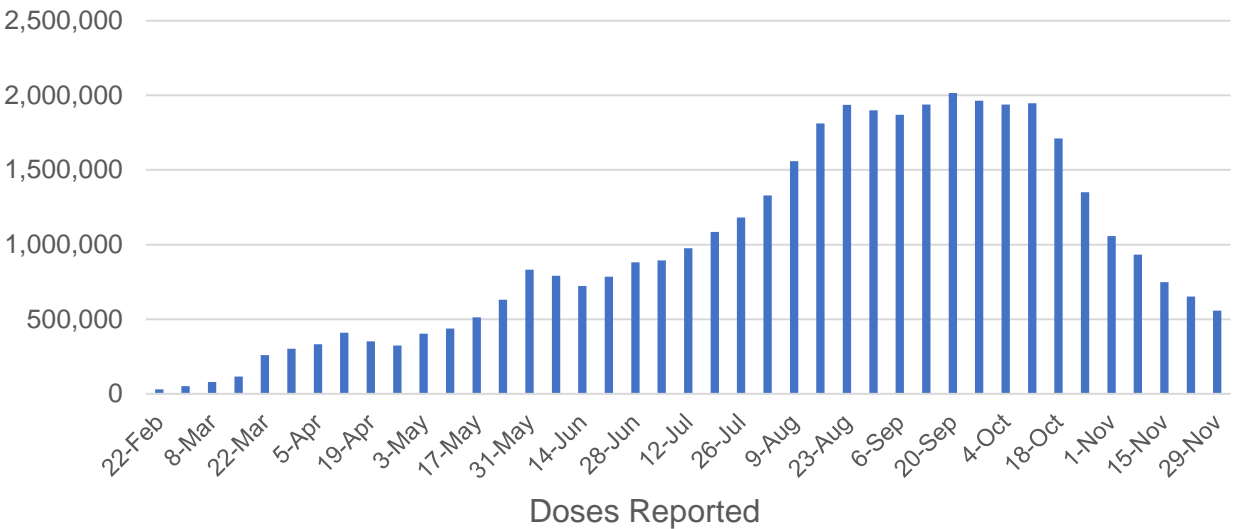
NT	Jurisdictions	Commonwealth
Cumulative	231,034	160,736
Daily increase	1,010	433

# Vaccine milestone charts

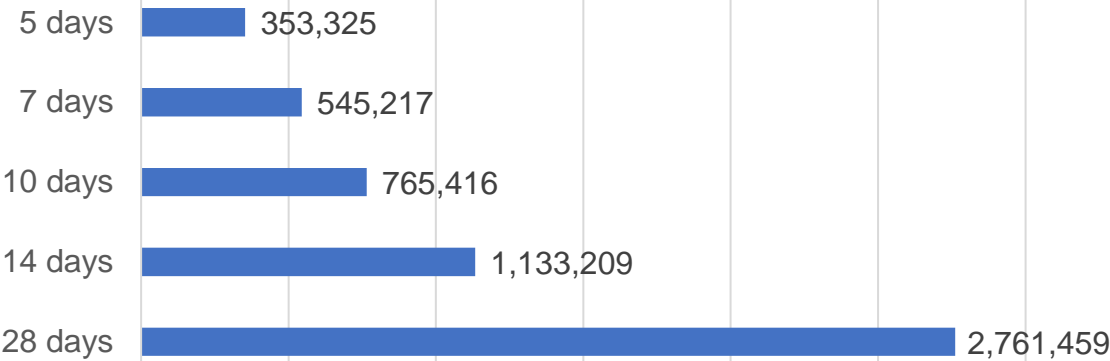
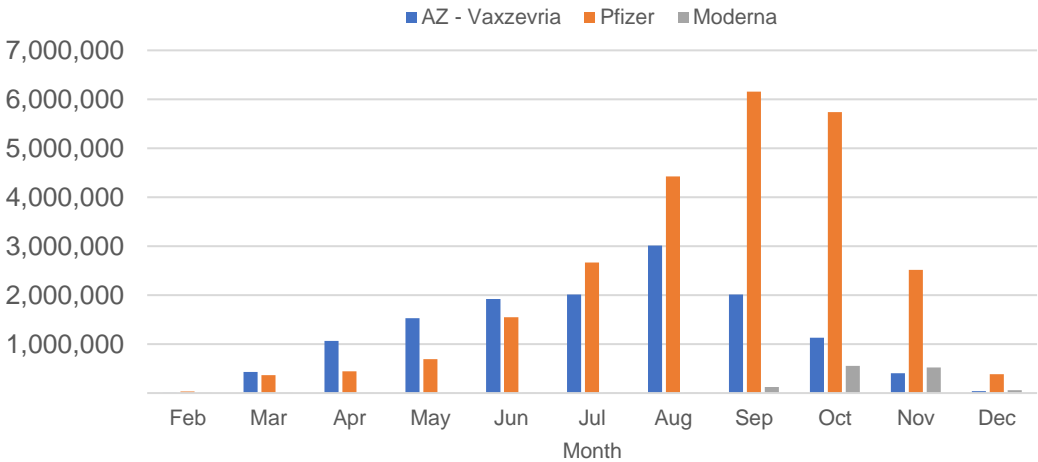
Data as at:  
07 Dec 2021

Australia's COVID-19  
Vaccine Roadmap

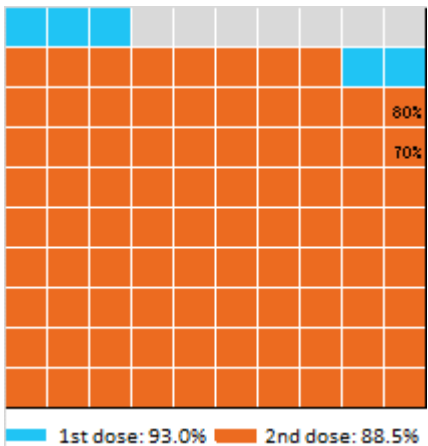
Doses Administered by Week



Doses by administration month and vaccine type



Eligible population percentage coverage



\*Sourced from the Australian Immunisation Register.

\*Each square represents 1% of the national population.  
Squares are filled as milestones are achieved.

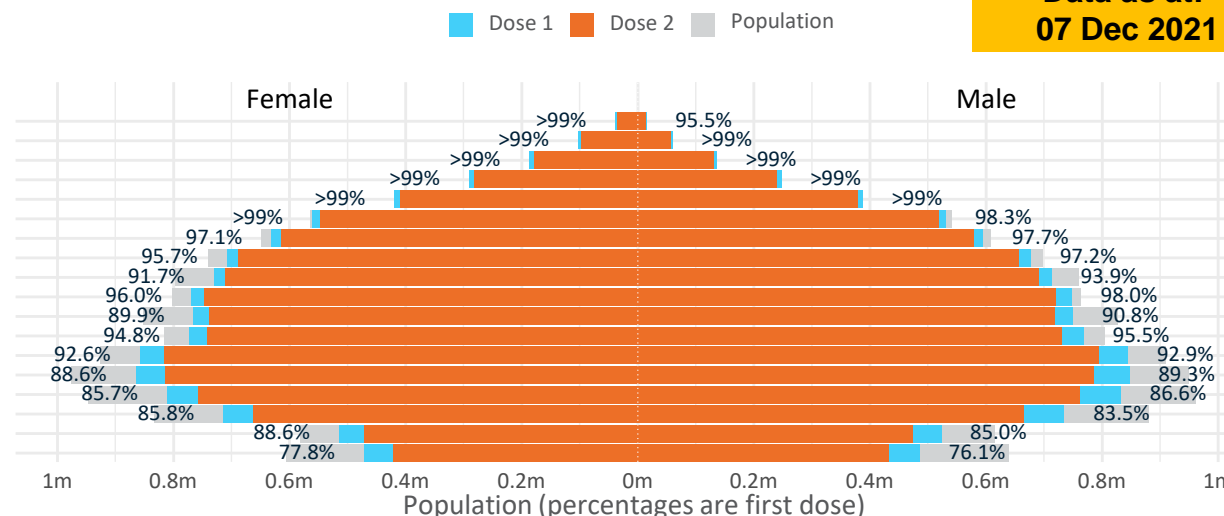
# Doses by age and sex

First and second doses by age and sex

Australia's COVID-19  
Vaccine Roadmap

Data as at:  
07 Dec 2021

Age	Dose 1	Dose 2
95+	53,051 (>99%)	48,764 (92.2%)
90-94	162,583 (>99%)	153,578 (96.9%)
85-89	322,528 (>99%)	309,019 (97.7%)
80-84	538,139 (>99%)	521,532 (98.7%)
75-79	807,052 (>99%)	787,111 (>99%)
70-74	1,092,743 (98.9%)	1,066,702 (96.5%)
65-69	1,226,985 (97.5%)	1,194,336 (94.9%)
60-64	1,386,797 (96.5%)	1,344,725 (93.6%)
55-59	1,444,804 (92.9%)	1,403,174 (90.2%)
50-54	1,518,531 (97.1%)	1,467,269 (93.8%)
45-49	1,516,419 (90.4%)	1,457,088 (86.9%)
40-44	1,543,573 (95.3%)	1,472,674 (90.9%)
35-39	1,707,022 (93.0%)	1,613,208 (87.9%)
30-34	1,719,095 (89.4%)	1,605,113 (83.4%)
25-29	1,653,145 (86.7%)	1,525,645 (80.0%)
20-24	1,454,852 (85.0%)	1,332,388 (77.8%)
16-19	1,037,951 (86.8%)	945,668 (79.1%)
12-15	957,441 (77.0%)	853,367 (68.6%)



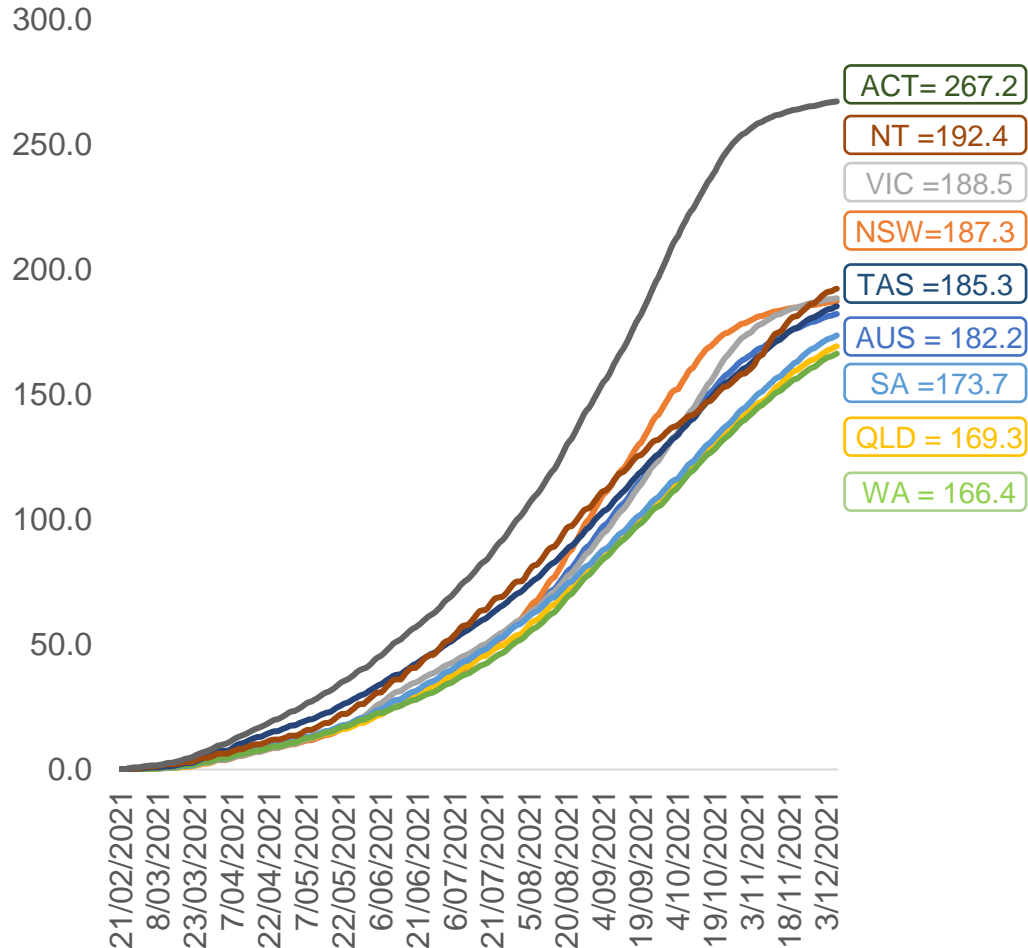
	AUS	ACT	NSW	NT	QLD	SA	TAS	VIC	WA
16 and over - dose 1	19,185,270	346,111	6,217,594	167,856	3,607,260	1,305,100	418,527	5,055,498	1,859,719
16 and over - dose 2	18,247,994	340,009	6,102,932	151,933	3,273,157	1,200,024	392,014	4,945,090	1,663,390
16 and over - population	20,619,959*	344,037	6,565,651	190,571	4,112,707	1,440,400	440,172	5,407,574	2,114,978
16 and over % with dose 1	93.04%	>99%	94.70%	88.08%	87.71%	90.61%	95.08%	93.49%	87.93%
16 and over % with dose 2	88.50%	98.83%	92.95%	79.73%	79.59%	83.31%	89.06%	91.45%	78.65%
50 and over - dose 1	8,553,213	133,935	2,771,484	56,216	1,662,759	646,580	213,045	2,173,077	838,704
50 and over - dose 2	8,296,210	132,085	2,732,398	53,134	1,584,565	614,346	204,365	2,133,968	790,428
50 and over - population	8,749,703	127,802	2,807,793	62,280	1,758,855	674,384	220,036	2,211,211	885,370
50 and over % with dose 1	97.75%	>99%	98.71%	90.26%	94.54%	95.88%	96.82%	98.28%	94.73%
50 and over % with dose 2	94.82%	>99%	97.31%	85.31%	90.09%	91.10%	92.88%	96.51%	89.28%
70 and over - dose 1	2,976,096	43,696	979,710	11,526	572,406	241,687	78,236	749,714	277,211
70 and over - dose 2	2,886,706	42,918	962,277	10,923	549,631	230,186	74,872	732,927	263,597
70 and over - population	2,934,706	39,946	962,606	12,343	577,767	240,514	77,155	743,519	280,281
70 and over % with dose 1	>99%	>99%	>99%	93.38%	>99%	>99%	>99%	>99%	98.90%
70 and over % with dose 2	98.36%	>99%	>99%	88.50%	95.13%	95.71%	97.04%	98.58%	94.05%
12 to 15 - dose 1	957,441	19,747	317,619	9,624	177,384	58,244	19,656	269,655	78,046
12 to 15 - dose 2	853,367	18,990	302,072	7,627	146,672	46,261	16,585	248,295	61,061
12 to 15 - population	1,243,990	19,693	390,330	13,060	270,146	82,747	26,308	308,611	132,869
12 to 15 % with dose 1	76.97%	>99%	81.37%	73.69%	65.66%	70.39%	74.71%	87.38%	58.74%
12 to 15 % with dose 2	68.60%	96.43%	77.39%	58.40%	54.29%	55.91%	63.04%	80.46%	45.96%

\*National population will not equal sum of listed jurisdictions due to a small number of people counted in national population residing in some 'other' territories. Sum of state doses will not add to national total as some records are unable to be geocoded to a State or Territory.

Doses sourced from Australian Immunisation Register, population from ABS ERP June 2020

# Vaccinations by location

Cumulative total doses administered vs eligible state populations\*

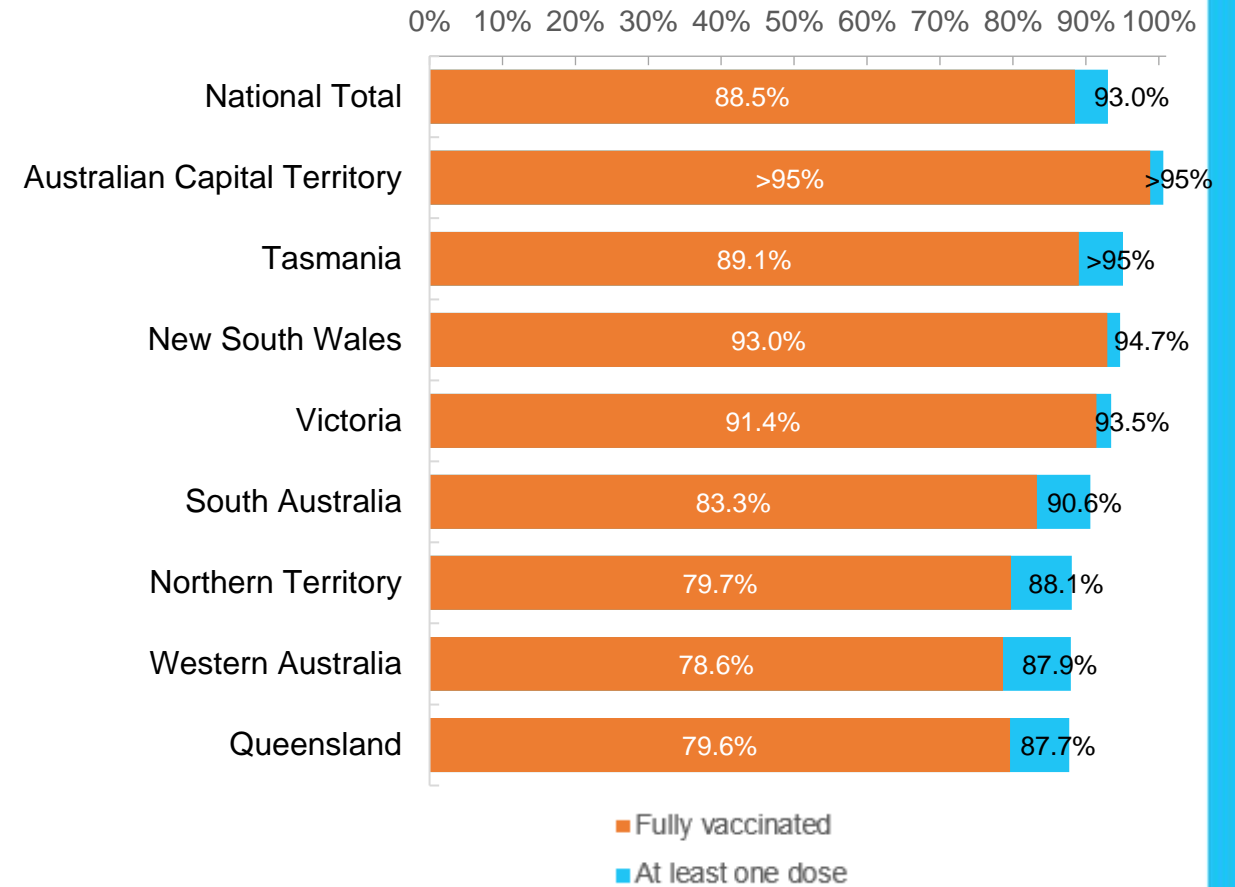


\*Not an indication of percentage vaccinated, numbers will exceed 100 due to multiple doses required per person of the population. All doses are included, including those for the 12-15 cohort, and are based on vaccination provider location.

Data as at:  
07 Dec 2021

Australia's COVID-19  
Vaccine Roadmap

First and Second Doses by state of residence



# Aboriginal and Torres Strait Islander peoples

## Number of people vaccinated

Data as at:  
07 Dec 2021  
Updated weekly

Australia's COVID-19  
Vaccine Roadmap



**399,610**

people over the age of 16  
have had at least one dose

**75.7%**

of people over the age of 16  
have had at least one dose



**344,716**

people over the age of 16  
are fully vaccinated

**65.3%**

of people over the age of 16 are  
fully vaccinated



**40,103  
(56.0%)**

people aged 12-15 years  
have had at least one dose

## 172 Aboriginal community controlled health services (ACCHS)

0#	50	26	40	12	3	21	18
<b>ACT</b>	<b>NSW</b>	<b>NT</b>	<b>QLD</b>	<b>SA</b>	<b>TAS</b>	<b>VIC</b>	<b>WA</b>

Medicare Address State <sup>##</sup>	Individuals Dose 1	Individuals Dose 1 %	Individuals Dose 2	Individuals Dose 2 %
Australian Capital Territory	4,928	90.4%	4,726	86.7%
New South Wales	137,349	85.8%	132,020	82.5%
Northern Territory	37,429	81.5%	30,051	65.5%
Queensland	99,232	69.4%	79,141	55.3%
South Australia	17,931	70.4%	14,501	57.0%
Tasmania	13,936	81.3%	12,639	73.7%
Victoria	35,617	88.0%	33,888	83.7%
Western Australia	38,957	61.2%	27,383	43.1%
Unknown/Other Territories	14,231	53.6%	10,367	39.0%
<b>Totals</b>	<b>399,610</b>	<b>75.7%</b>	<b>344,716</b>	<b>65.3%</b>

Source: Australian Immunisation Register

\*Identifying as Aboriginal and Torres Strait Islander is optional and the estimated population may be under reported.

\*\*Includes all Aboriginal and Torres Strait Islander peoples who have received a vaccination, not limited to those administered in an ACCHS setting

#ACCHS in the ACT are currently operating as a Commonwealth Vaccine Clinics so not included to avoid double counting

##The above table includes all identified Aboriginal and Torres Strait Islander people who are aged 16 and above by their state of residence.

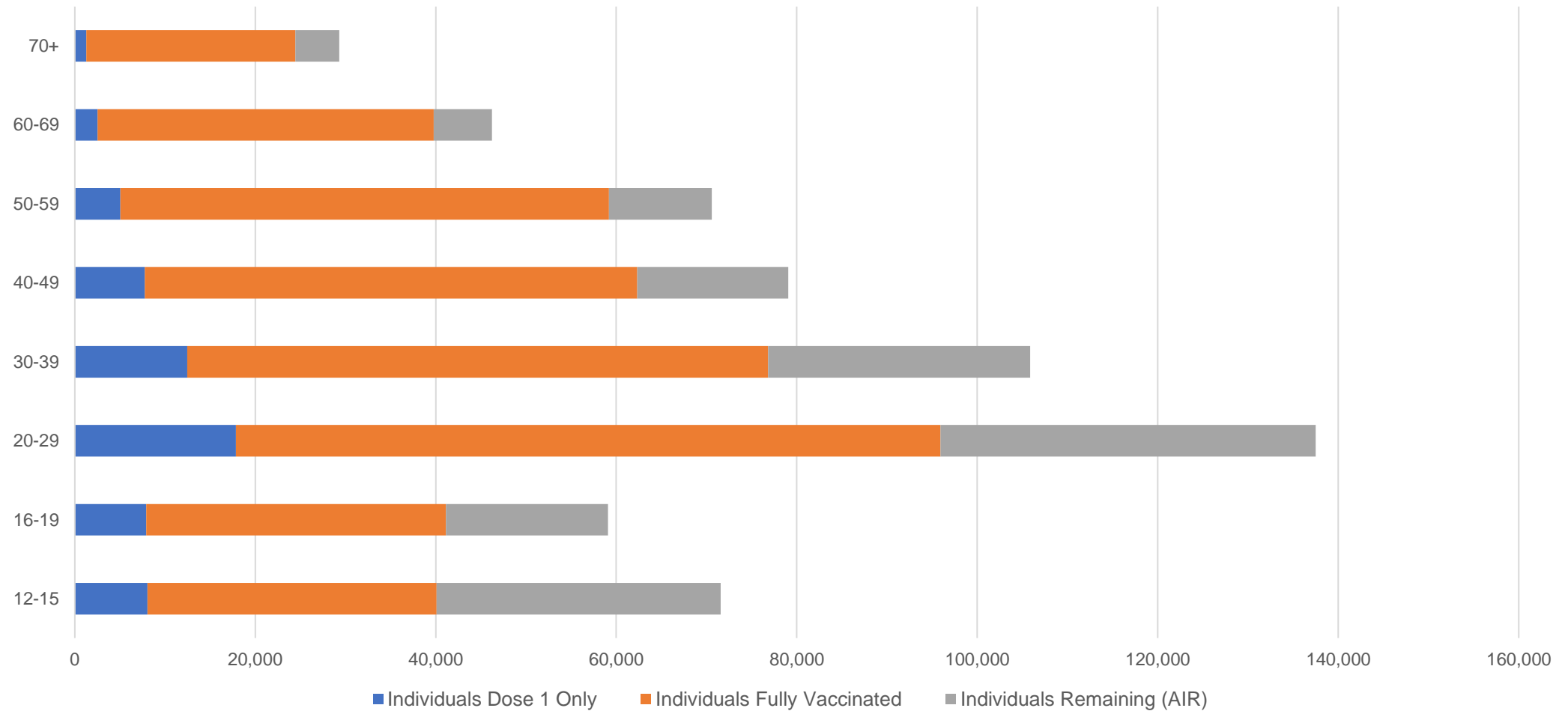


# Aboriginal and Torres Strait Islander peoples

## Number of people vaccinated by age

Data as at:  
07 Dec 2021  
Updated weekly

Australia's COVID-19  
Vaccine Roadmap



Source: Australian Immunisation Register

Data as at:  
07 Dec 2021

# Commonwealth primary care



## Primary care vaccine administration sites

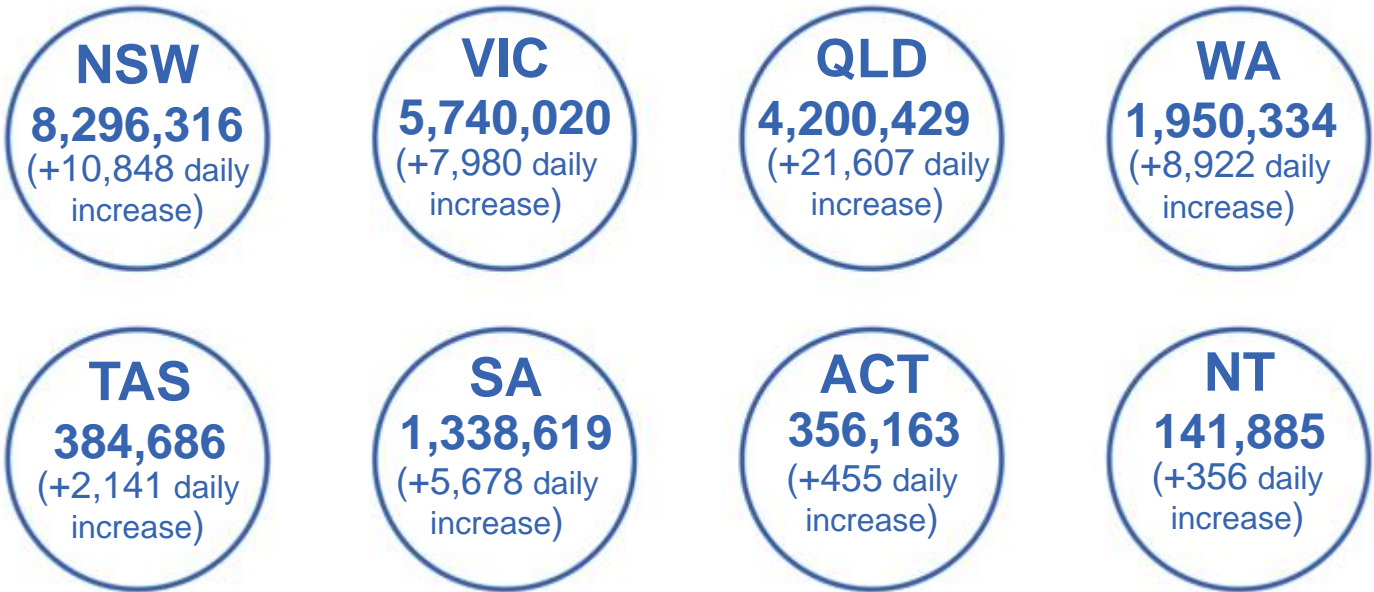
<b>5,654</b>	<b>137</b>	<b>173</b>	<b>3,458</b>
GPs	CVCs	ACCHS	Pharmacies



**22,571,641** total vaccine doses administered  
primary care settings as at 07 December  
**+ 57,512** recorded in the last 24 hours

## Primary care vaccinations by provider type

	Doses administered	Daily increase	7 day increase
General Practice* includes other Commonwealth	20,113,277	39,595	234,962
Pharmacy	2,458,364	17,917	101,545



**163,189** doses administered to persons residing in other territories or with missing residential information

\*General practice includes Commonwealth Vaccination Clinics, Aboriginal Community Health Centres, Royal Flying Doctor Service and other Commonwealth vaccination facilities

Source: Australian Immunisation Register

Data as at:  
07 Dec 2021

# Commonwealth aged care and disability doses administered



**1,139,804** (+ 2,237 last 24 hours)

Total vaccine doses administered in aged care and disability facilities as at 07 December

Number of doses administered as part of the Commonwealth aged and disability care rollout

**NSW**  
**528,188**  
(+464 daily increase)

**VIC**  
**211,612**  
(+752 daily increase)

**QLD**  
**175,483**  
(+616 daily increase)

**WA**  
**81,460**  
(+47 daily increase)

**TAS**  
**20,125**  
(+127 daily increase)

**SA**  
**73,955**  
(+208 daily increase)

**ACT**  
**14,836**  
(+2 daily increase)

**NT**  
**6,515**  
(+14 daily increase)

**27,630**

doses administered to persons  
residing in other territories or with  
missing residential information

\*Sourced from the Australian Immunisation Register. Includes all persons vaccinated at participating residential aged care, disability and related industry settings.

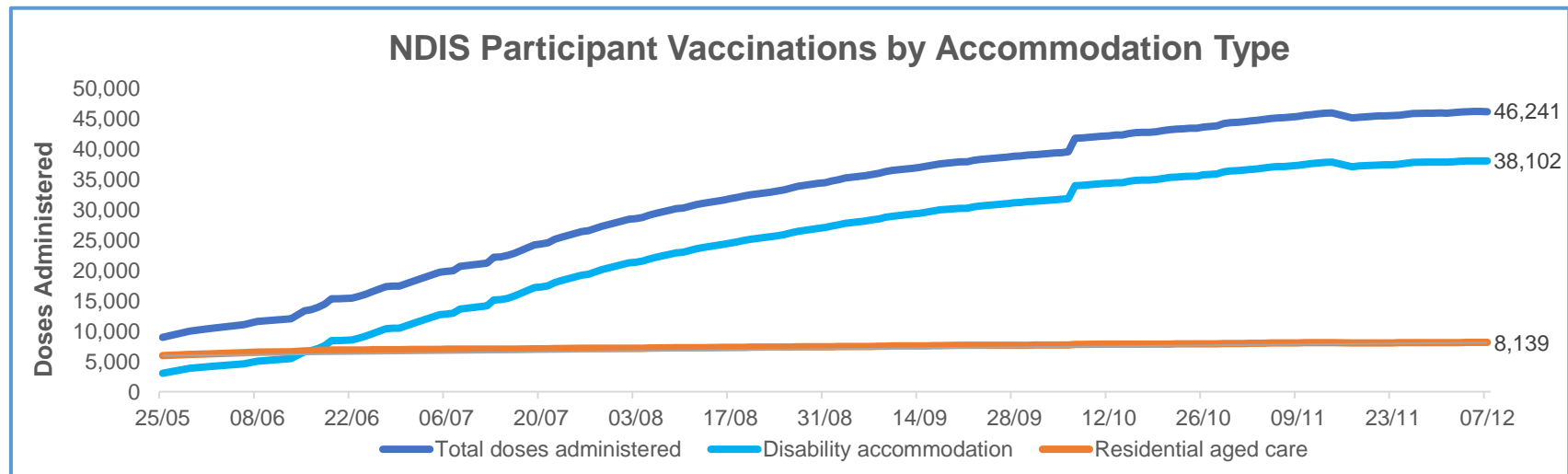
\*\*State level breakdown indicates the residential location and may not align to the state in which the vaccination occurred.

Source: Australian Immunisation Register

Data as at:  
07 Dec 2021\*

# Vaccination rate of people with disability and the disability workforce

## Phase 1a – People with disability living in shared accommodation



	Total people with at least one dose	People fully vaccinated	Total number of individuals in cohort	Total doses administered	% People with at least one dose	% People fully vaccinated
NDIS participants living in shared accommodation **	23,586	22,655	27,603	46,241	85.4%	82.1%
NDIS screened workers ***	226,475	216,294	257,538	442,769	87.9%	84.0%



\* Updates are available Monday to Friday on participants, and bi-weekly for workers, numbers may be up to four days old.

\*\* Shared accommodation means two or more people with disability living in shared residential accommodation and NDIS participants living in Residential Aged Care accommodation as per the eligibility criteria of Phase 1a. The number of residents changes over time and refinement of methodology can lead to corrections in totals.

\*\*\* Total number of workers within the NDIS Commission Worker Screening database who have ever been successfully screened and linked to an NDIS registered provider or participant.

Source: Linkage between National Disability Insurance Agency data, NDIS Quality and Safeguards Commission data and the Australian Immunisation Register.

## Residential aged care vaccination rollout

### Residential aged care facilities status

**100%** Commonwealth facilities visited (2,566 planned sites)

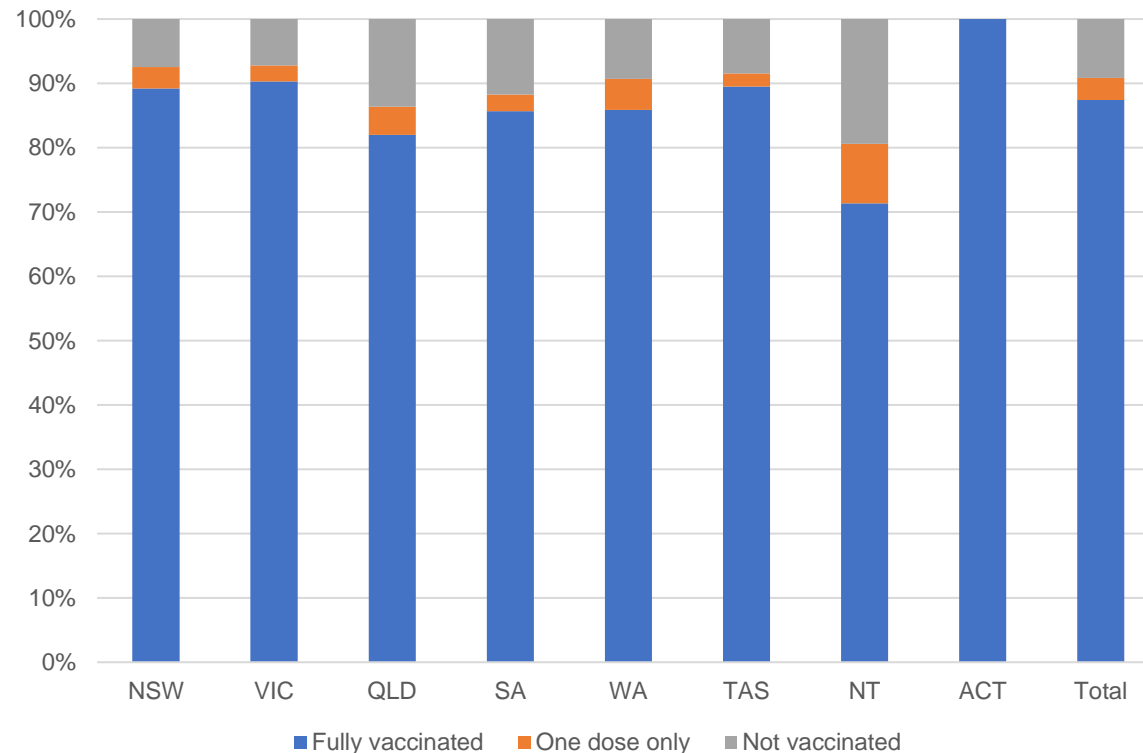
**162,293** People fully vaccinated

**168,646** People with at least one dose

Australia's COVID-19 Vaccine Roadmap

Data as at:  
07 Dec 2021

### Aged care resident vaccinations



### Aged care worker vaccinations

Jurisdictions	Total workers with at least one dose	Workers fully vaccinated	% Workers with at least one dose	% Workers fully vaccinated
NSW	79,077	79,011	99.5%	99.4%
VIC	71,295	71,293	99.8%	99.8%
QLD	49,057	48,913	99.9%	99.6%
SA	27,556	27,325	99.6%	98.7%
WA	23,563	23,409	99.6%	99.0%
TAS	7,667	7,551	100.0%	98.5%
NT	867	864	100.0%	99.7%
ACT	3,004	3,004	99.0%	99.0%
<b>Total</b>	<b>262,086</b>	<b>261,370</b>	<b>99.7%</b>	<b>99.4%</b>

Source: My Aged Care Portal staff vaccination progress

\*\*Resident vaccination information is reported manually by service providers

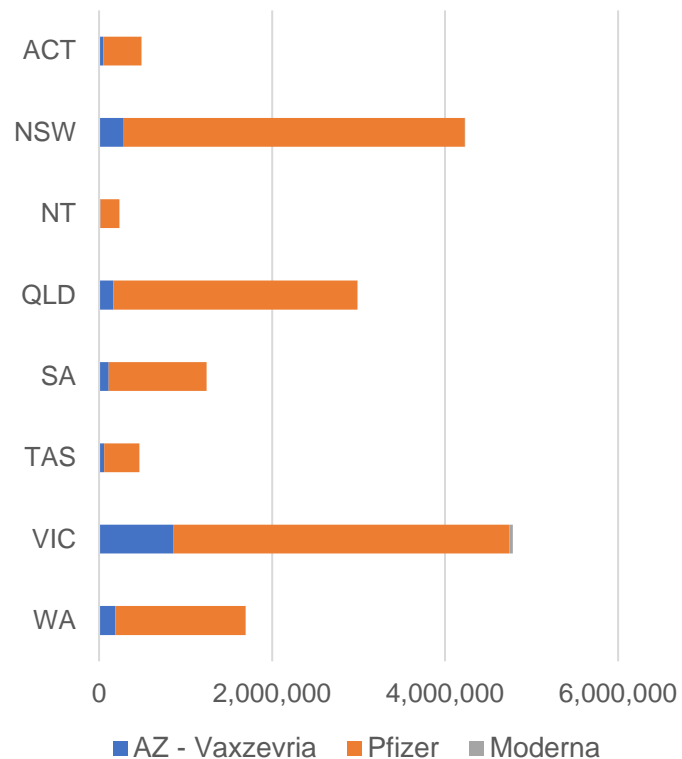
\*Status updates are provided by facilities at least once per week. Reporting is updated Monday to Friday to encompass different facility updates being made on different days.

Data is sourced directly from Aged Care Service Providers and is not drawn or closely aligned with data from AIR due to inconsistencies and potential lags in uploading of records.

Data as at:  
07 Dec 2021

# Jurisdiction administered

Total vaccine doses administered in State and Territory clinics as at 07 December



**16,127,813** total vaccine doses administered  
in State and Territory clinics as at 07 December  
+ **28,668** recorded in the last 24 hours  
+ **186,554** recorded in the last 7 days

**NSW**  
**4,230,186**  
(+2,759 daily  
increase)

**VIC**  
**4,785,518**  
(+3,513 daily  
increase)

**QLD**  
**2,985,371**  
(+10,970 daily  
increase)

**WA**  
**1,695,680**  
(+4,228 daily  
increase)

**TAS**  
**466,071**  
(+1,127 daily  
increase)

**SA**  
**1,241,046**  
(+3,356 daily  
increase)

**ACT**  
**492,907**  
(+1,705 daily  
increase)

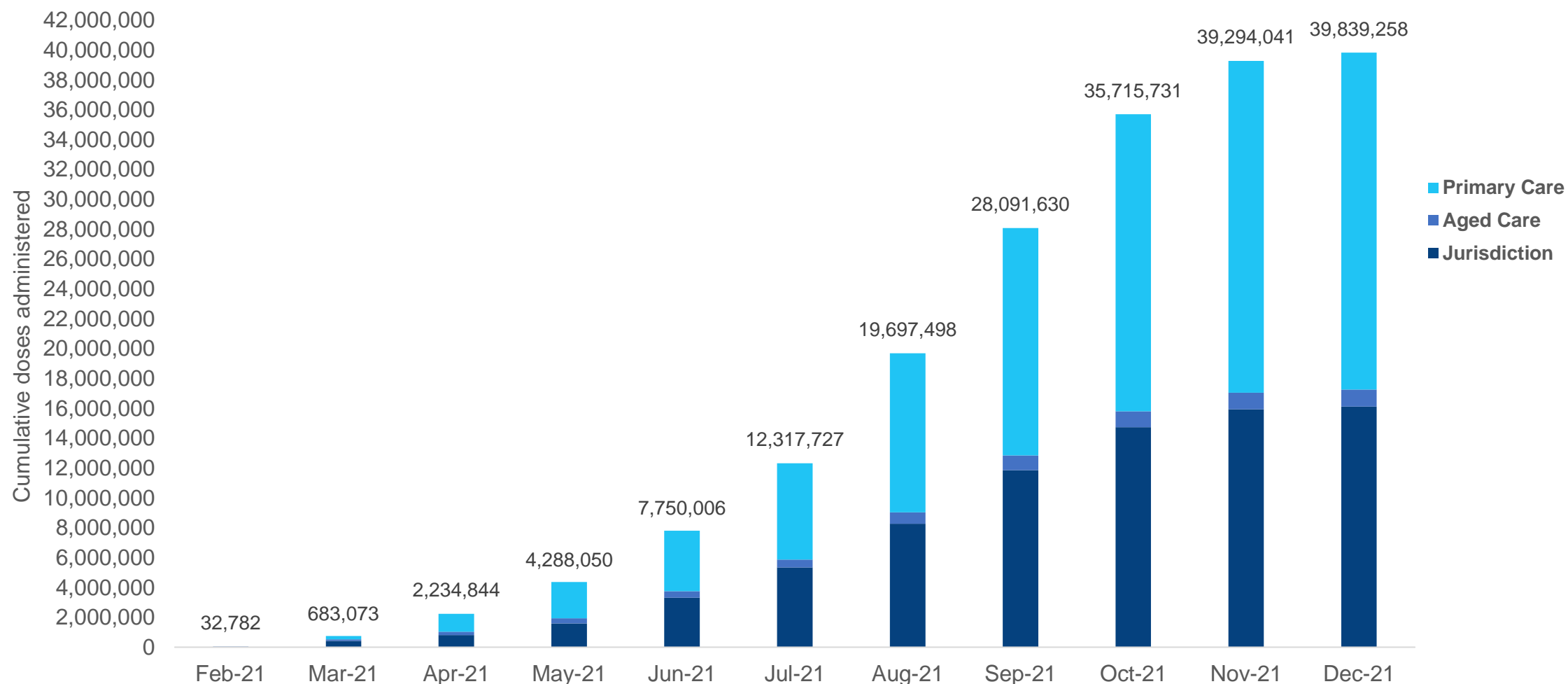
**NT**  
**231,034**  
(+1,010 daily  
increase)

\*Sourced from the Australian Immunisation Register and self-reported data. Numbers are calculated as difference in daily cumulative reported numbers to allow for historical corrections in all self-reported data sources.

# Cumulative doses administered by channel

Data as at:  
07 Dec 2021

Australia's COVID-19  
Vaccine Roadmap



Source: Australian Immunisation Register

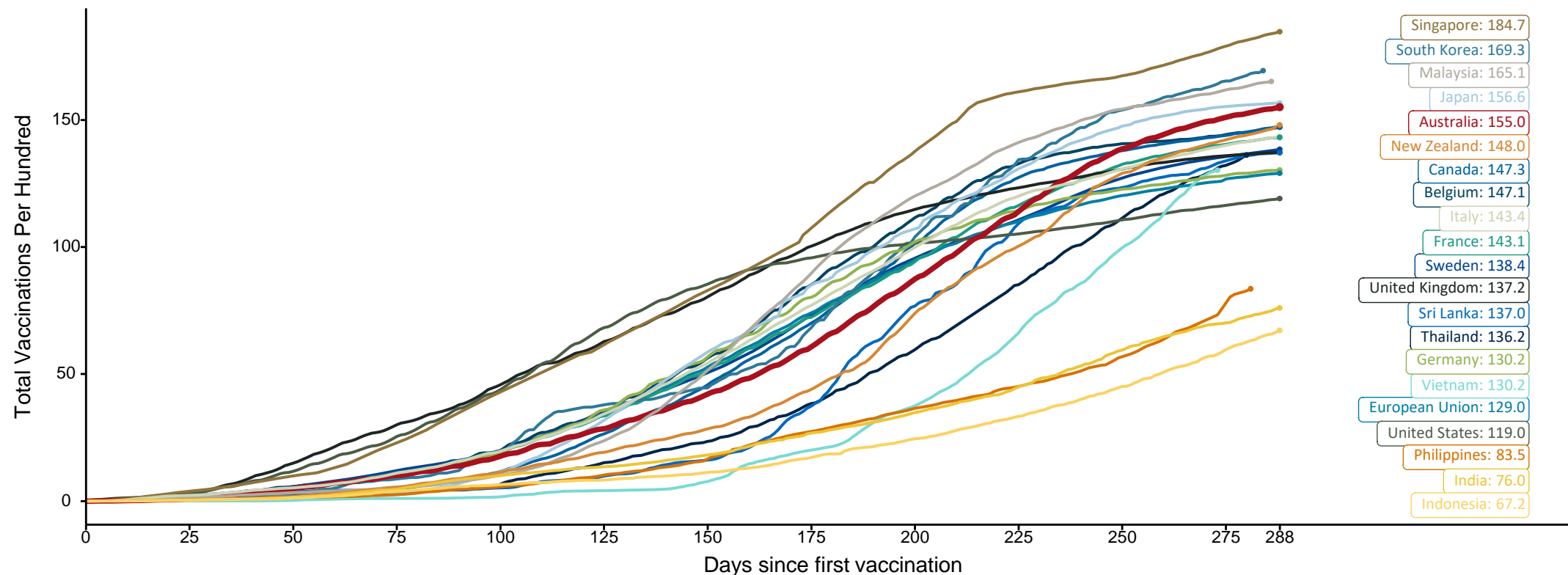


# Doses at equivalent stages of rollout (Day 288)

Data as at:  
07 Dec 2021

The x-axis is truncated at the length of Australia's vaccination program. Countries with intermittent reporting have had their doses per 100 imputed to Australia's current stage of rollout. Israel excluded as it is beyond scale of the graph

Cumulative doses administered (07 Dec): **39,839,258**



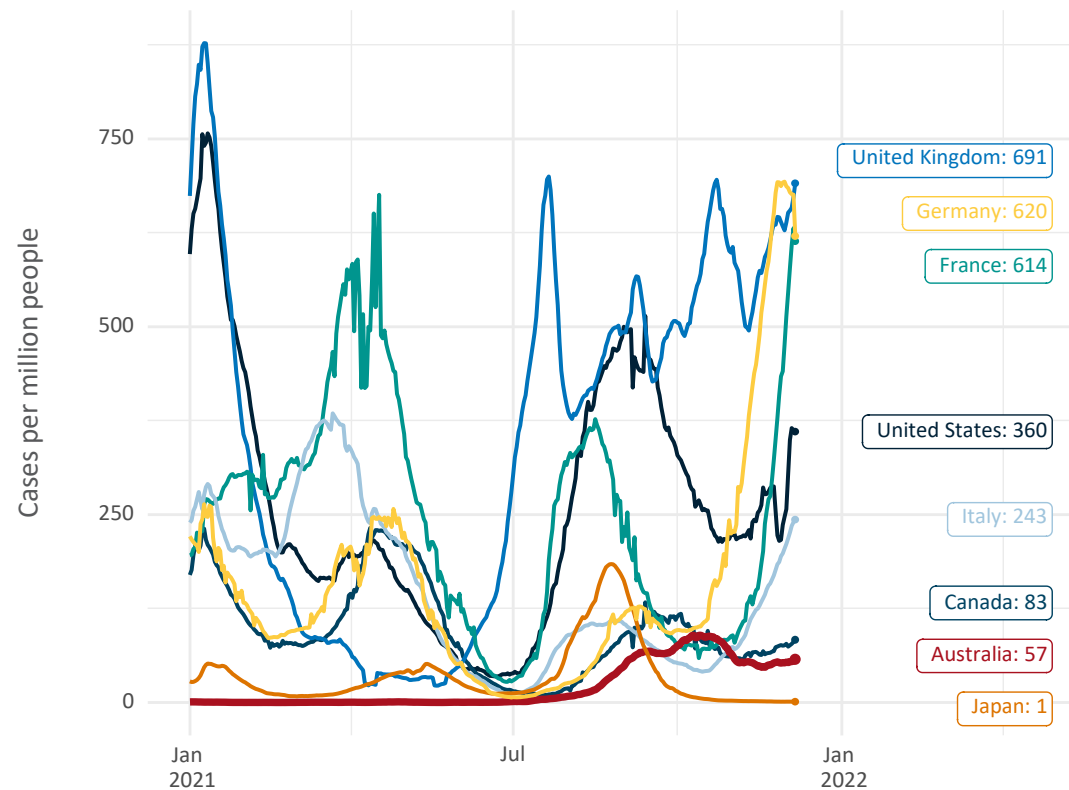
Note: From 15 September 2021, data for Australia includes all doses administered to people 12 and over. Prior to 15 September, data was for 16 and over  
Source: Department of Health (Australia), Our World in Data (international)  
Latest data: 07 December



# International data – COVID-19

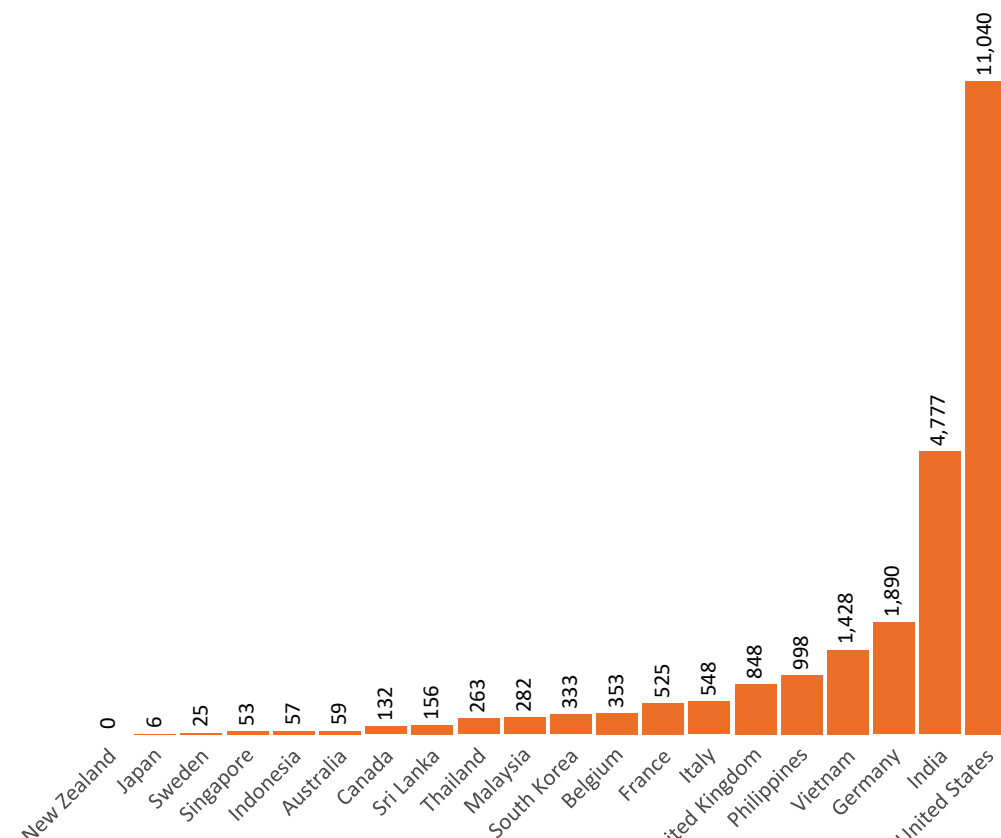
Data as at:  
07 Dec 2021

New daily cases per million in 2021, Australia and G7 countries  
Smoothed - 7 day average



Source: OWID  
Data downloaded: 08 Dec 2021 07:42  
Latest data: 06 Dec 2021

COVID-19 deaths in past 7 days - Australia and select countries



Source: OWID  
Data downloaded: 08 Dec 2021 07:42  
Latest data: 06 Dec 2021

# Pandemic Response Payments

Australia's COVID-19  
Vaccine Roadmap

Data as at midnight:  
7 Dec 2021



<b>COVID Disaster Payment:</b>	5.89 million claims received - 2.19 million individuals paid a total of \$12.59 billion.
<b>\$200 Income Support Payment:</b>	352,000 claims received - 183,000 individuals paid a total of \$268.87 million.
<b>Pandemic Leave Disaster Payment:</b>	147,000 claims received - 125,000 individuals paid a total of \$206.47 million.



## COVID Disaster Payment

assisting during a lockdown  
event in a Commonwealth  
hotspot.

## Income Support Payment \$200

for income support  
recipients who lost at  
least 8 hours of work.

## Pandemic Leave Disaster Payment

for those who have to  
self-isolate, quarantine  
or care.

For more information visit:  
[servicesaustralia.gov.au](https://servicesaustralia.gov.au)

## COVID-19 DISASTER PAYMENTS

### Victoria

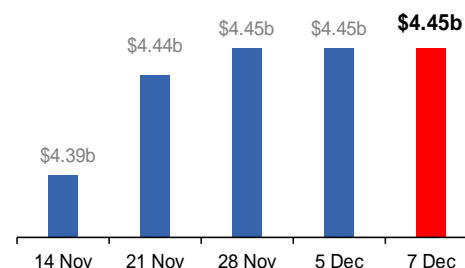
Lockdown (#6) since 6 Aug to 28 Oct  
Claiming period ends 9 Dec

**745,000 people have received at least  
one COVID Disaster Payment.**

**\$4.45b paid out as at 7 Dec 2021.**

**\$2.6m paid in initial and reoccurring  
payments in the week ending  
5 Dec 2021.**

Cumulative payments made by State since  
activation on 8 Jun 2021.



### Northern Territory

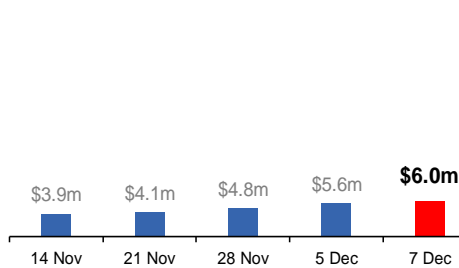
Lockdown (#3) from 16 Nov to 22 Nov  
Claiming period ends 27 Dec

**7,000 people have received at least one  
COVID Disaster Payment.**

**\$6.0m paid out as at 7 Dec 2021.**

**\$805,000 paid in initial payments in the  
week ending 5 Dec 2021.**

Cumulative payments made by State since  
activation on 25 Aug 2021.



### New South Wales

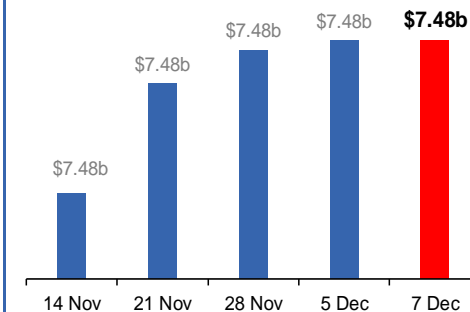
Lockdown from 24 Jun to 10 Oct  
Claiming period ended 27 Nov

**1.08m people have received at least  
one COVID Disaster Payment.**

**\$7.48b paid out as at 7 Dec 2021.**

**\$163,000 paid in initial and reoccurring  
payments in the week ending  
5 Dec 2021.**

Cumulative payments made by State since  
activation on 1 Jul 2021.



### Australian Capital Territory

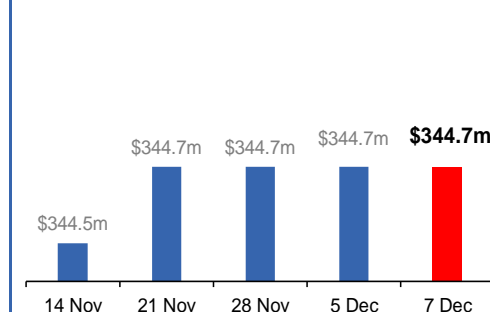
Lockdown since 12 Aug to 14 Oct  
Claiming period ended 25 Nov

**65,000 people have received at least  
one COVID Disaster Payment.**

**\$344.7m paid out as at 7 Dec 2021.**

**\$8,000 paid in initial and reoccurring  
payments in the week ending  
5 Dec 2021.**

Cumulative payments made by State since  
activation on 20 Aug 2021.



# Pandemic Response Payments (continued)

Data as at midnight:  
7 Dec 2021

## COVID-19 DISASTER PAYMENTS


### Tasmania

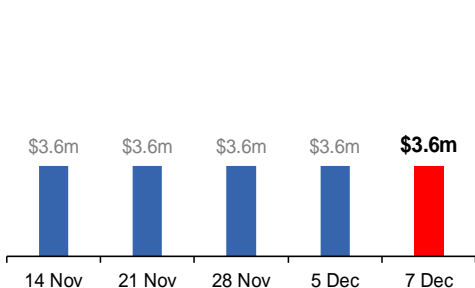
Lockdown from 15 Oct to 18 Oct  
Claiming period ended 12 Nov

**6,900 people have received at least one COVID Disaster Payment.**

**\$3.6m paid out as at 7 Dec 2021.**

**\$2,000 paid in initial payments in the week ending 5 Dec 2021.**

 Cumulative payments made by State since activation on 22 Oct 2021.




### Queensland

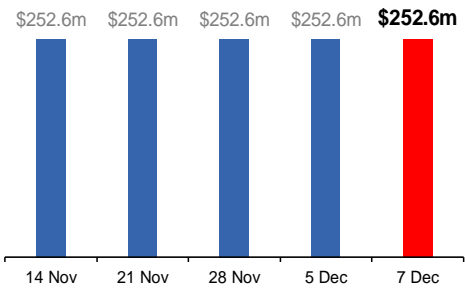
Lockdown from 31 Jul to 11 Aug  
Claiming period ended 28 Aug

**196,000 people have received at least one COVID Disaster Payment.**

**\$252.6m paid out as at 7 Dec 2021.**

**\$9,000 paid in initial and reoccurring payments in the week ending 5 Dec 2021.**

 Cumulative payments made by State since activation on 7 Aug 2021.




### South Australia

Lockdown from 21 to 27 Jul  
Claiming period ended 17 Aug

**86,000 people have received at least one COVID Disaster Payment.**

**\$48.2m paid out as at 7 Dec 2021.**

**\$1,200 paid in initial and reoccurring payments in the week ending 5 Dec 2021.**

 Cumulative payments made by State since activation on 28 Jul 2021.

