



Australian Government
Operation COVID Shield

COVID-19 Vaccine Roll-out

07 December 2021

Data as at:
06 Dec 2021

Total vaccine doses



39,750,841 total vaccine
doses administered nationally as at 06 December
+86,870 recorded in the last 24 hours



19,168,755

people have had at least one
dose

93.0%

of people over the age of 16
have had at least one dose



18,205,756

people are fully vaccinated

88.3%

of people over the age of 16 are
fully vaccinated



559,046

people over the age of 16
who have received more
than two doses

NSW
13,015,133
(+14,458 daily
increase)

VIC
10,764,263
(+13,204 daily
increase)

QLD
7,386,573
(+29,795 daily
increase)

WA
3,727,629
(+14,598 daily
increase)

TAS
861,186
(+2,172 daily
increase)

SA
2,635,984
(+8,717 daily
increase)

ACT
969,746
(+2,548 daily
increase)

NT
390,327
(+1,378 daily
increase)

*Administration state breakdown indicates state in which a vaccine was administered

**Overall dose count includes instances of more than two doses per person in a small number of cases.

Source: Australian Immunisation Register

Data as at:
06 Dec 2021

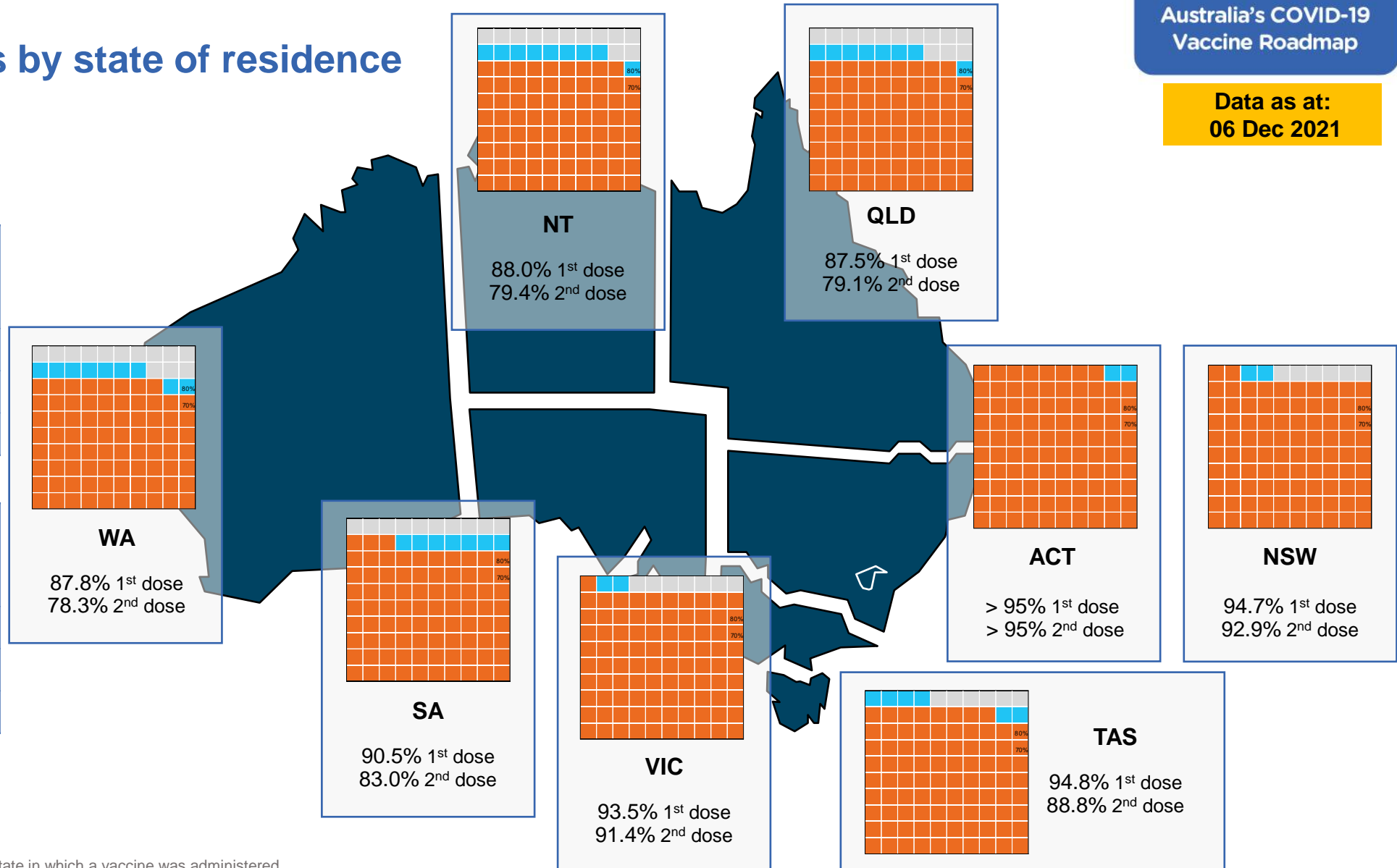
Vaccinations by state of residence

First doses

Age	Today	4 weeks ago	8 weeks ago
16+	93.0%	89.8%	83.6%
50+	>95%	>95%	92.8%
70+	>95%	>95%	>95%

Fully vaccinated

Age	Today	4 weeks ago	8 weeks ago
16+	88.3%	81.5%	64.5%
50+	94.7%	89.5%	78.2%
70+	>95%	93.8%	84.6%



*Residential state may differ from the state in which a vaccine was administered

Commonwealth and Jurisdiction vaccine doses administered

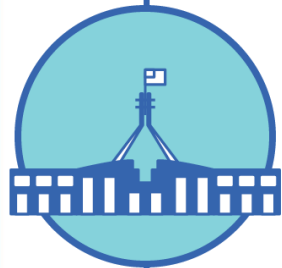
Data as at:
06 Dec 2021



39,750,841 total vaccine
doses administered nationally as at 06 December
+ 86,870 recorded in the last 24 hours



16,099,145
doses administered by state
and territory facilities
+ 26,272
recorded in the last 24 hours



23,651,696
doses administered by
commonwealth facilities
+ 60,598
recorded in the last 24 hours
22,514,129 total vaccine doses
administered in primary care settings
1,137,567 total vaccine doses
administered in aged care and disability
settings

NSW	Jurisdictions	Commonwealth
Cumulative	4,227,427	8,787,706
Daily increase	2,919	11,539

VIC	Jurisdictions	Commonwealth
Cumulative	4,782,005	5,982,258
Daily increase	3,720	9,484

QLD	Jurisdictions	Commonwealth
Cumulative	2,974,401	4,412,172
Daily increase	8,885	20,910

WA	Jurisdictions	Commonwealth
Cumulative	1,691,452	2,036,177
Daily increase	4,909	9,689

TAS	Jurisdictions	Commonwealth
Cumulative	464,944	396,242
Daily increase	357	1,815

SA	Jurisdictions	Commonwealth
Cumulative	1,237,690	1,398,294
Daily increase	3,033	5,684

ACT	Jurisdictions	Commonwealth
Cumulative	491,202	478,544
Daily increase	1,825	723

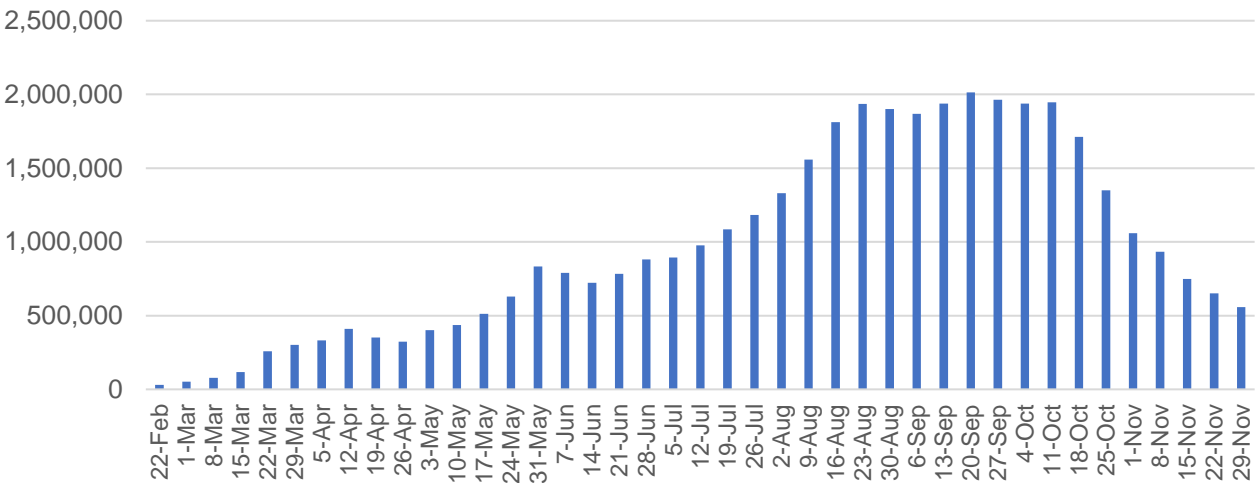
NT	Jurisdictions	Commonwealth
Cumulative	230,024	160,303
Daily increase	624	754

Vaccine milestone charts

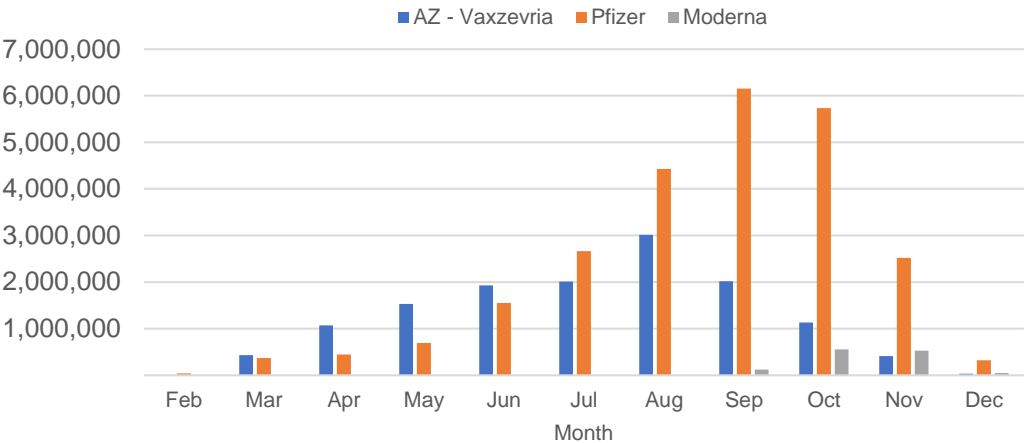
Data as at:
06 Dec 2021

Australia's COVID-19
Vaccine Roadmap

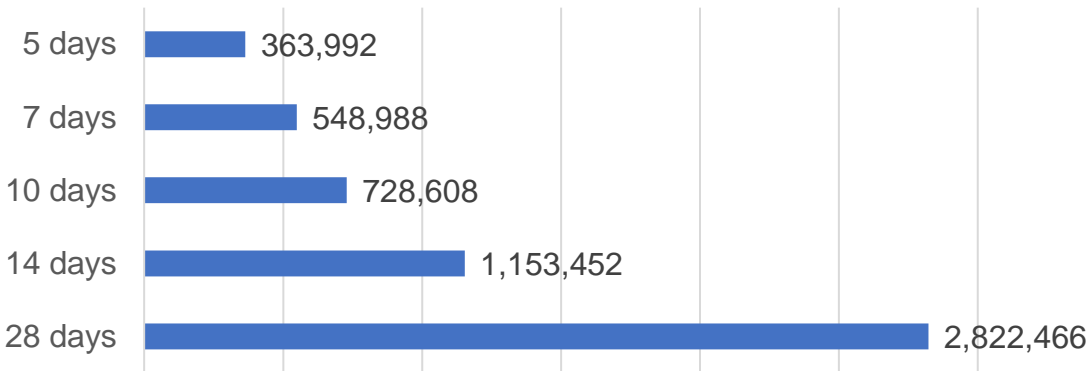
Doses Administered by Week



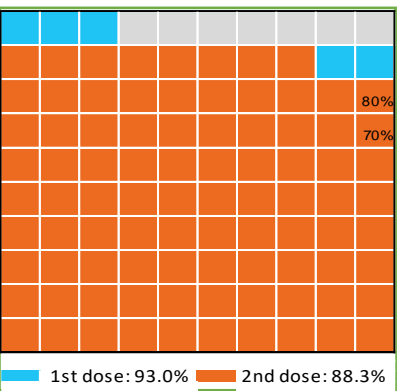
Doses by administration month and vaccine type



Doses Reported



Eligible population percentage coverage



*Sourced from the Australian Immunisation Register.

*Each square represents 1% of the national population. Squares are filled as milestones are achieved.

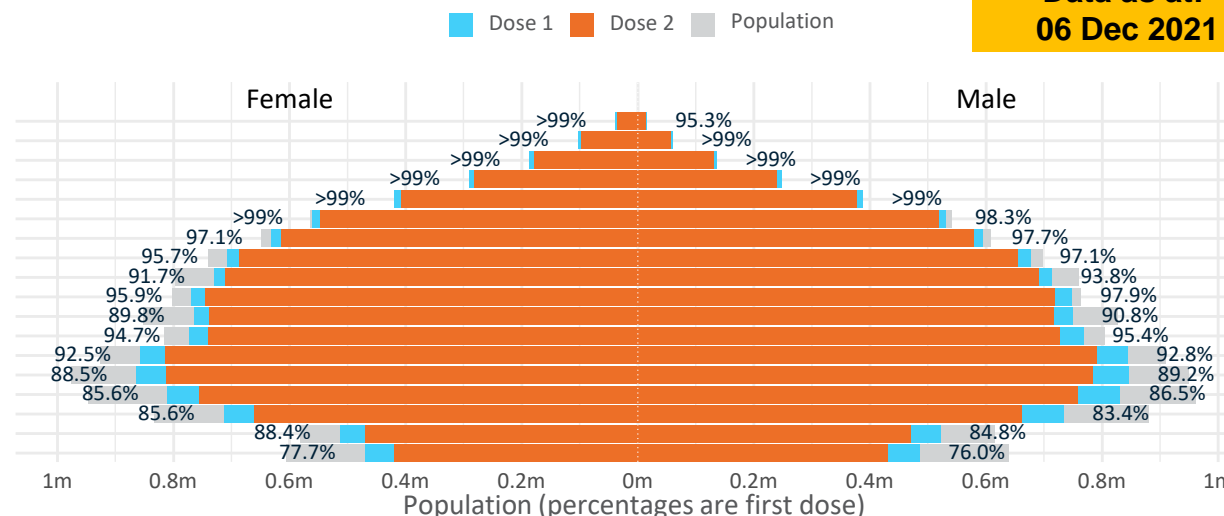
Doses by age and sex

First and second doses by age and sex

Australia's COVID-19
Vaccine Roadmap

Data as at:
06 Dec 2021

Age	Dose 1	Dose 2
95+	52,983 (>99%)	48,653 (92.0%)
90-94	162,473 (>99%)	153,271 (96.7%)
85-89	322,338 (>99%)	308,479 (97.6%)
80-84	537,826 (>99%)	520,795 (98.6%)
75-79	806,630 (>99%)	786,001 (>99%)
70-74	1,092,443 (98.9%)	1,065,343 (96.4%)
65-69	1,226,480 (97.5%)	1,192,456 (94.8%)
60-64	1,386,121 (96.5%)	1,342,153 (93.4%)
55-59	1,444,112 (92.8%)	1,401,284 (90.1%)
50-54	1,517,487 (97.0%)	1,464,917 (93.6%)
45-49	1,515,522 (90.4%)	1,454,616 (86.8%)
40-44	1,542,116 (95.2%)	1,469,579 (90.7%)
35-39	1,705,291 (92.9%)	1,609,112 (87.7%)
30-34	1,717,518 (89.3%)	1,600,567 (83.2%)
25-29	1,651,077 (86.6%)	1,520,377 (79.7%)
20-24	1,452,716 (84.8%)	1,327,039 (77.5%)
16-19	1,035,622 (86.6%)	941,114 (78.7%)
12-15	955,956 (76.8%)	849,706 (68.3%)



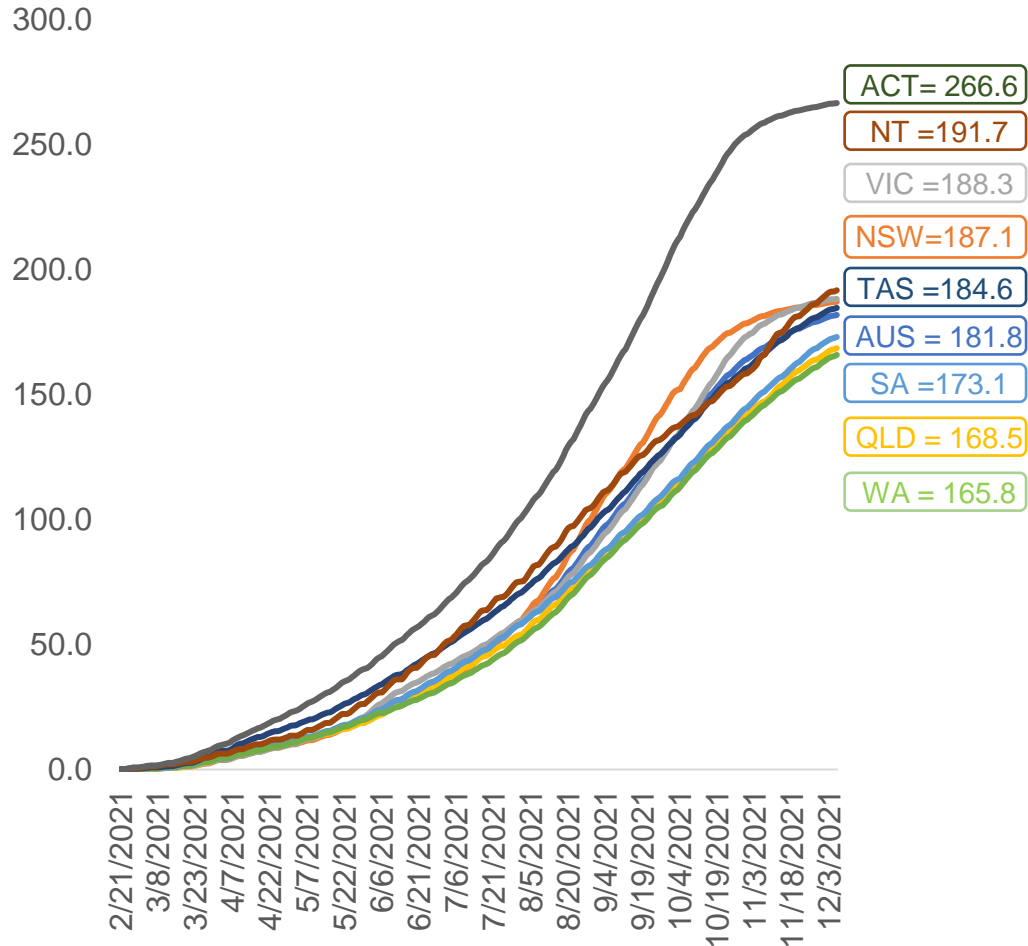
	AUS	ACT	NSW	NT	QLD	SA	TAS	VIC	WA
16 and over - dose 1	19,168,755	346,059	6,216,233	167,689	3,599,673	1,302,919	417,462	5,054,152	1,856,034
16 and over - dose 2	18,205,756	339,798	6,098,934	151,260	3,253,646	1,194,987	390,727	4,940,454	1,656,165
16 and over - population	20,619,959*	344,037	6,565,651	190,571	4,112,707	1,440,400	440,172	5,407,574	2,114,978
16 and over % with dose 1	92.96%	>99%	94.68%	87.99%	87.53%	90.46%	94.84%	93.46%	87.76%
16 and over % with dose 2	88.29%	98.77%	92.89%	79.37%	79.11%	82.96%	88.77%	91.36%	78.31%
50 and over - dose 1	8,548,893	133,907	2,770,925	56,179	1,661,005	645,908	212,791	2,172,482	837,923
50 and over - dose 2	8,283,352	132,001	2,730,882	52,994	1,579,651	612,574	203,840	2,132,119	788,111
50 and over - population	8,749,703	127,802	2,807,793	62,280	1,758,855	674,384	220,036	2,211,211	885,370
50 and over % with dose 1	97.70%	>99%	98.69%	90.20%	94.44%	95.78%	96.71%	98.25%	94.64%
50 and over % with dose 2	94.67%	>99%	97.26%	85.09%	89.81%	90.83%	92.64%	96.42%	89.01%
70 and over - dose 1	2,974,693	43,680	979,421	11,521	571,952	241,479	78,158	749,443	277,027
70 and over - dose 2	2,882,542	42,885	961,614	10,905	548,359	229,567	74,671	732,163	262,931
70 and over - population	2,934,706	39,946	962,606	12,343	577,767	240,514	77,155	743,519	280,281
70 and over % with dose 1	>99%	>99%	>99%	93.34%	98.99%	>99%	>99%	>99%	98.84%
70 and over % with dose 2	98.22%	>99%	>99%	88.35%	94.91%	95.45%	96.78%	98.47%	93.81%
12 to 15 - dose 1	955,956	19,731	317,554	9,604	176,772	58,086	19,585	269,397	77,725
12 to 15 - dose 2	849,706	18,968	301,772	7,565	145,102	45,872	16,474	247,817	60,339
12 to 15 - population	1,243,990	19,693	390,330	13,060	270,146	82,747	26,308	308,611	132,869
12 to 15 % with dose 1	76.85%	>99%	81.36%	73.54%	65.44%	70.20%	74.45%	87.29%	58.50%
12 to 15 % with dose 2	68.30%	96.32%	77.31%	57.92%	53.71%	55.44%	62.62%	80.30%	45.41%

*National population will not equal sum of listed jurisdictions due to a small number of people counted in national population residing in some 'other' territories. Sum of state doses will not add to national total as some records are unable to be geocoded to a State or Territory.

Doses sourced from Australian Immunisation Register, population from ABS ERP June 2020

Vaccinations by location

Cumulative total doses administered vs eligible state populations*

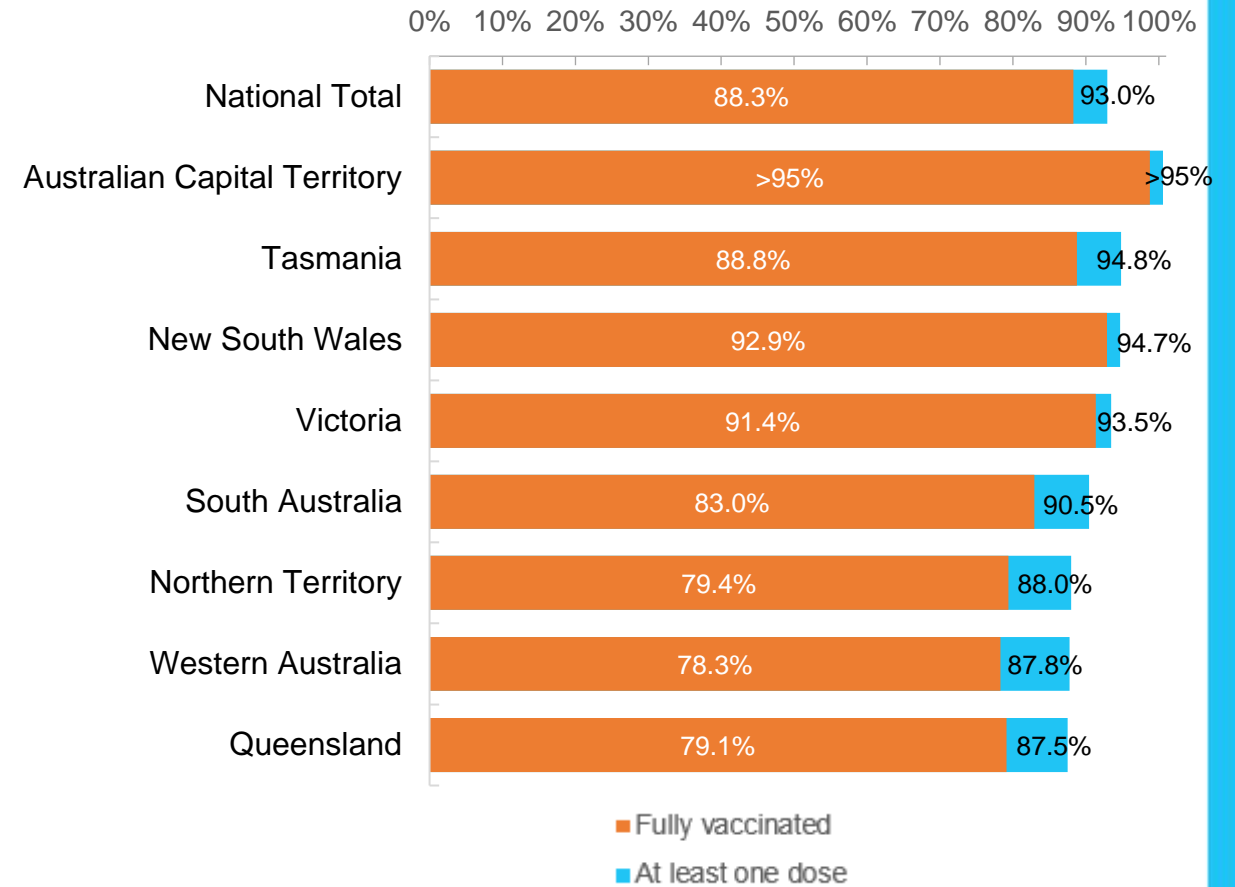


*Not an indication of percentage vaccinated, numbers will exceed 100 due to multiple doses required per person of the population. All doses are included, including those for the 12-15 cohort, and are based on vaccination provider location.

Data as at:
06 Dec 2021

Australia's COVID-19
Vaccine Roadmap

First and Second Doses by state of residence



Aboriginal and Torres Strait Islander peoples

Number of people vaccinated

Data as at:
30 Nov 2021
Updated weekly

Australia's COVID-19
Vaccine Roadmap



391,929

people over the age of 16
have had at least one dose

73.9%

of people over the age of 16
have had at least one dose



331,966

people over the age of 16
are fully vaccinated

62.4%

of people over the age of 16 are
fully vaccinated



**39,188
(54.7%)**

people aged 12-15 years
have had at least one dose

173 Aboriginal community controlled health services (ACCHS)

0#	50	27	41	12	3	21	19
ACT	NSW	NT	QLD	SA	TAS	VIC	WA

Medicare Address State ^{##}	Individuals Dose 1	Individuals Dose 1 %	Individuals Dose 2	Individuals Dose 2 %
Australian Capital Territory	4,913	90.0%	4,691	85.8%
New South Wales	136,813	85.3%	130,695	81.4%
Northern Territory	36,749	79.8%	28,194	60.9%
Queensland	96,092	66.7%	73,689	51.1%
South Australia	17,403	67.8%	13,804	53.5%
Tasmania	13,704	79.4%	12,364	71.4%
Victoria	35,451	87.5%	33,389	82.3%
Western Australia	36,959	57.5%	25,432	39.4%
Unknown/Other Territories	13,845	51.3%	9,708	35.8%
Totals	391,929	73.9%	331,966	62.4%

Source: Australian Immunisation Register

*Identifying as Aboriginal and Torres Strait Islander is optional and the estimated population may be under reported.

**Includes all Aboriginal and Torres Strait Islander peoples who have received a vaccination, not limited to those administered in an ACCHS setting

#ACCHS in the ACT are currently operating as a Commonwealth Vaccine Clinics so not included to avoid double counting

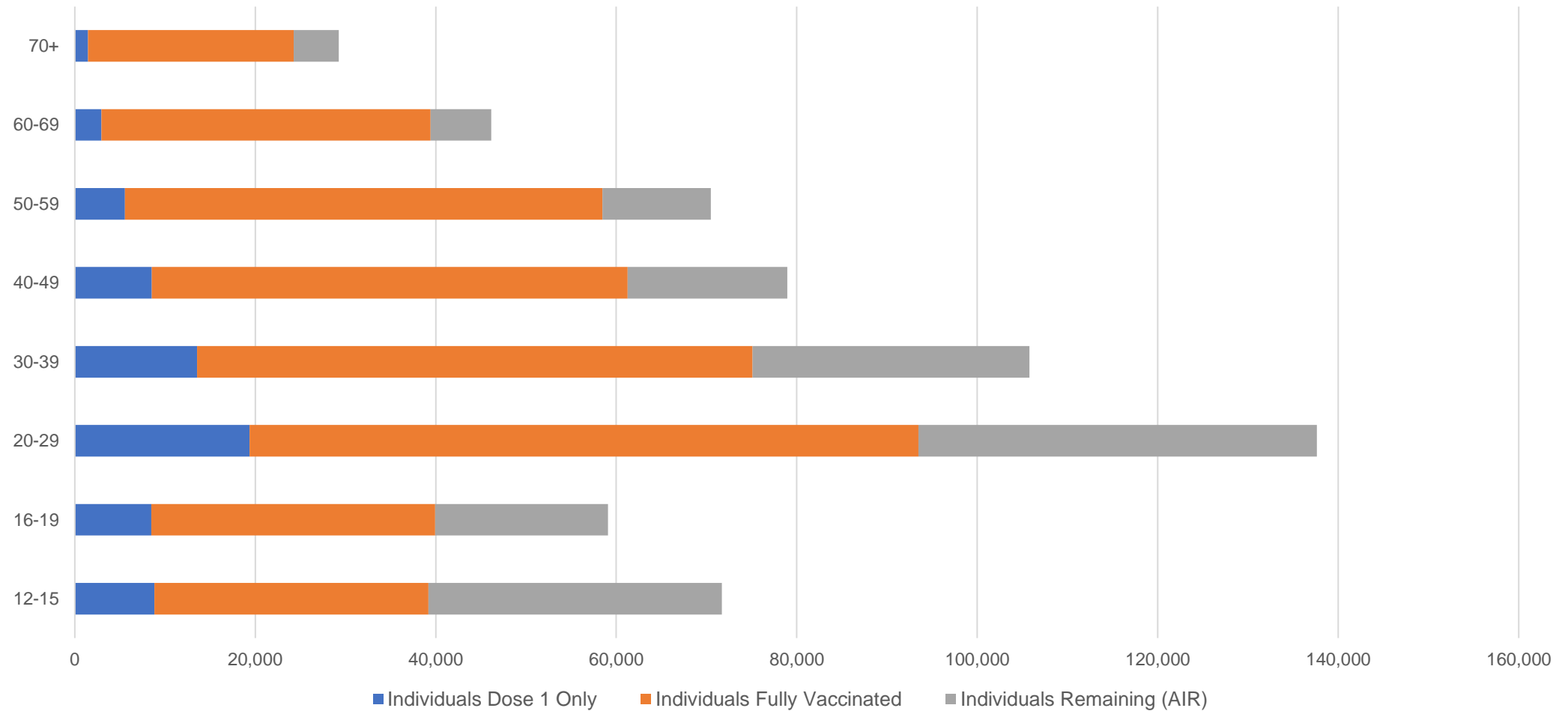
##The above table includes all identified Aboriginal and Torres Strait Islander people who are aged 16 and above by their state of residence.

Aboriginal and Torres Strait Islander peoples

Number of people vaccinated by age

Data as at:
30 Nov 2021
Updated weekly

Australia's COVID-19
Vaccine Roadmap



Source: Australian Immunisation Register

Data as at:
06 Dec 2021

Commonwealth primary care



Primary care vaccine administration sites

5,654	137	173	3,458
GPs	CVCs	ACCHS	Pharmacies



22,514,129 total vaccine doses administered
primary care settings as at 06 December
+ 58,882 recorded in the last 24 hours

Primary care vaccinations by provider type

	Doses administered	Daily increase	7 day increase
General Practice* includes other Commonwealth	20,073,682	40,908	239,015
Pharmacy	2,440,447	17,974	103,508

NSW
8,285,468
(+10,715 daily increase)

VIC
5,732,040
(+8,927 daily increase)

QLD
4,178,822
(+20,135 daily increase)

WA
1,941,412
(+9,455 daily increase)

TAS
382,545
(+1,832 daily increase)

SA
1,332,941
(+5,234 daily increase)

ACT
355,708
(+732 daily increase)

NT
141,529
(+662 daily increase)

163,664 doses administered to persons
residing in other territories or with
missing residential information

*General practice includes Commonwealth Vaccination Clinics, Aboriginal Community Health Centres, Royal Flying Doctor Service and other Commonwealth vaccination facilities

Source: Australian Immunisation Register

Data as at:
06 Dec 2021

Commonwealth aged care and disability doses administered



1,137,567 (+ 1,716 last 24 hours)

Total vaccine doses administered in aged care and disability facilities as at 06 December

Number of doses administered as part of the Commonwealth aged and disability care rollout

NSW
527,724
(+451 daily increase)

VIC
210,860
(+62 daily increase)

QLD
174,867
(+619 daily increase)

WA
81,413
(+26 daily increase)

TAS
19,998
(+7 daily increase)

SA
73,747
(+472 daily increase)

ACT
14,834
(-4# daily increase)

NT
6,501
(+16 daily increase)

27,623

doses administered to persons
residing in other territories or with
missing residential information

*Sourced from the Australian Immunisation Register. Includes all persons vaccinated at participating residential aged care, disability and related industry settings.

**State level breakdown indicates the residential location and may not align to the state in which the vaccination occurred.

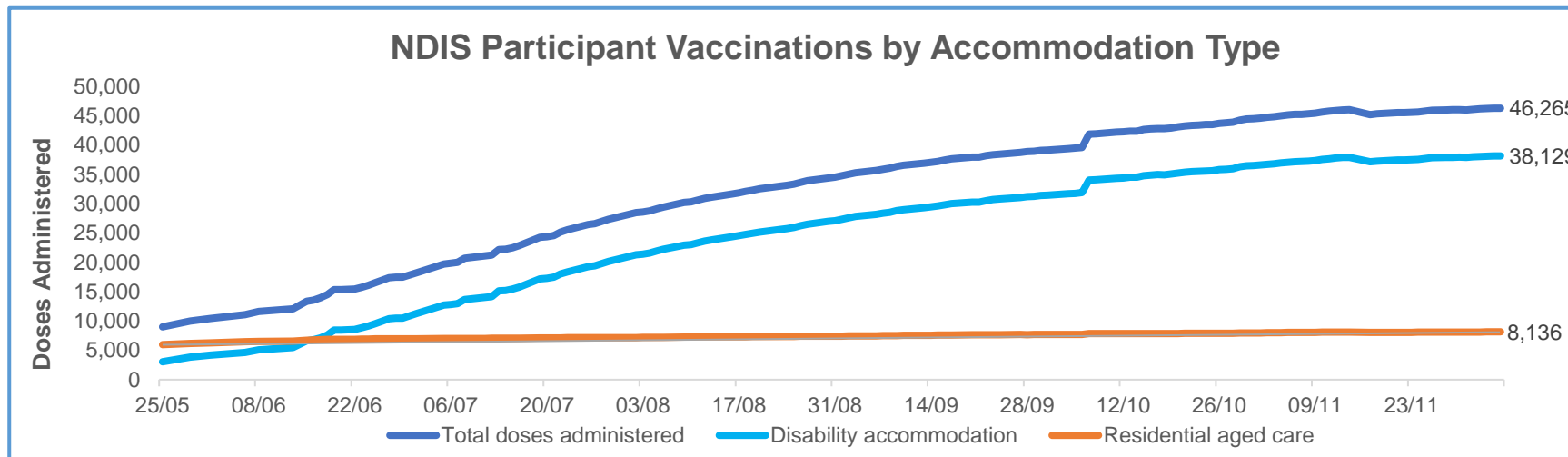
#Numbers are calculated as difference in daily cumulative reported numbers to allow for historical corrections in all data sources. This can occasionally result in negative numbers, such as for ACT, where historical details about doses have been updated.

Source: Australian Immunisation Register

Data as at:
06 Dec 2021*

Vaccination rate of people with disability and the disability workforce

Phase 1a – People with disability living in shared accommodation



	Total people with at least one dose	People fully vaccinated	Total number of individuals in cohort	Total doses administered	% People with at least one dose	% People fully vaccinated
NDIS participants living in shared accommodation **	23,602	22,663	27,603	46,265	85.5%	82.1%
NDIS screened workers ***	226,475	216,294	257,538	442,769	87.9%	84.0%



* Updates are available Monday to Friday on participants, and bi-weekly for workers, numbers may be up to four days old.

** Shared accommodation means two or more people with disability living in shared residential accommodation and NDIS participants living in Residential Aged Care accommodation as per the eligibility criteria of Phase 1a. The number of residents changes over time and refinement of methodology can lead to corrections in totals.

*** Total number of workers within the NDIS Commission Worker Screening database who have ever been successfully screened and linked to an NDIS registered provider or participant.

Source: Linkage between National Disability Insurance Agency data, NDIS Quality and Safeguards Commission data and the Australian Immunisation Register.

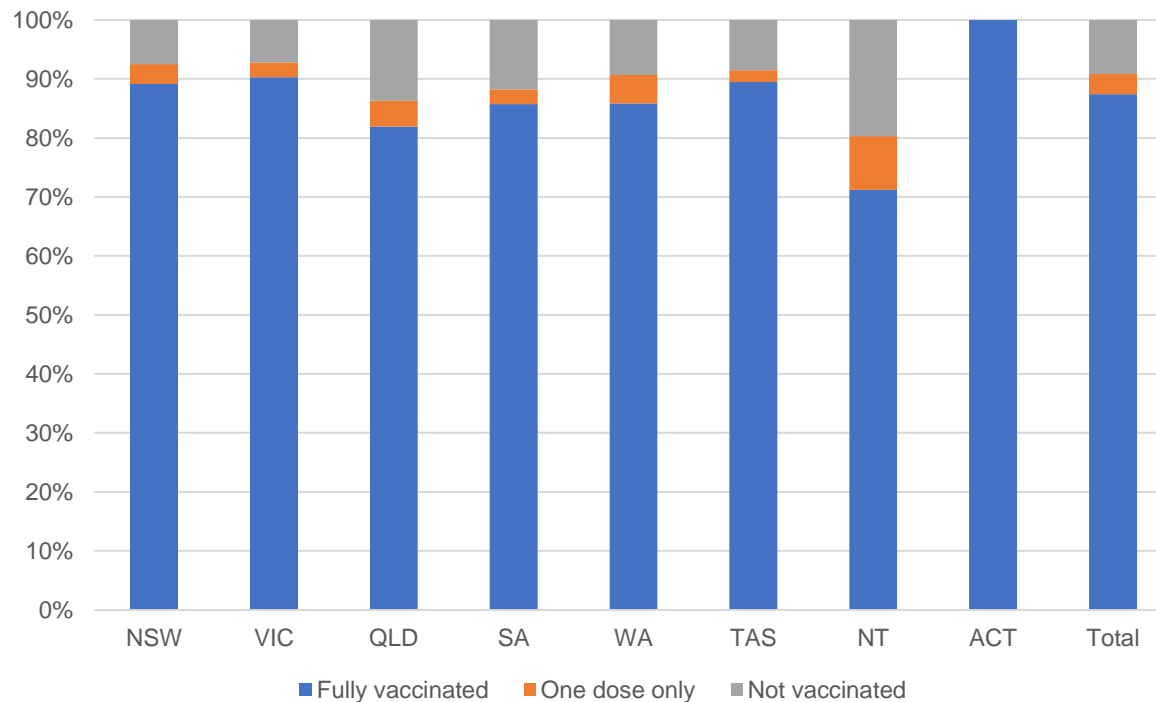
Residential aged care vaccination rollout



Australia's COVID-19 Vaccine Roadmap

Data as at:
06 Dec 2021

Aged care resident vaccinations



Aged care worker vaccinations

Jurisdictions	Total workers with at least one dose	Workers fully vaccinated	% Workers with at least one dose	% Workers fully vaccinated
NSW	79,020	78,946	99.8%	99.7%
VIC	71,156	71,129	99.9%	99.9%
QLD	48,851	48,625	100.0%	99.5%
SA	27,636	27,240	99.9%	98.5%
WA	23,696	23,542	100.0%	99.3%
TAS	7,684	7,556	100.0%	98.3%
NT	855	850	100.0%	99.4%
ACT	2,997	2,997	100.0%	100.0%
Total	261,895	260,885	99.9%	99.5%

Source: My Aged Care Portal staff vaccination progress

**Resident vaccination information is reported manually by service providers

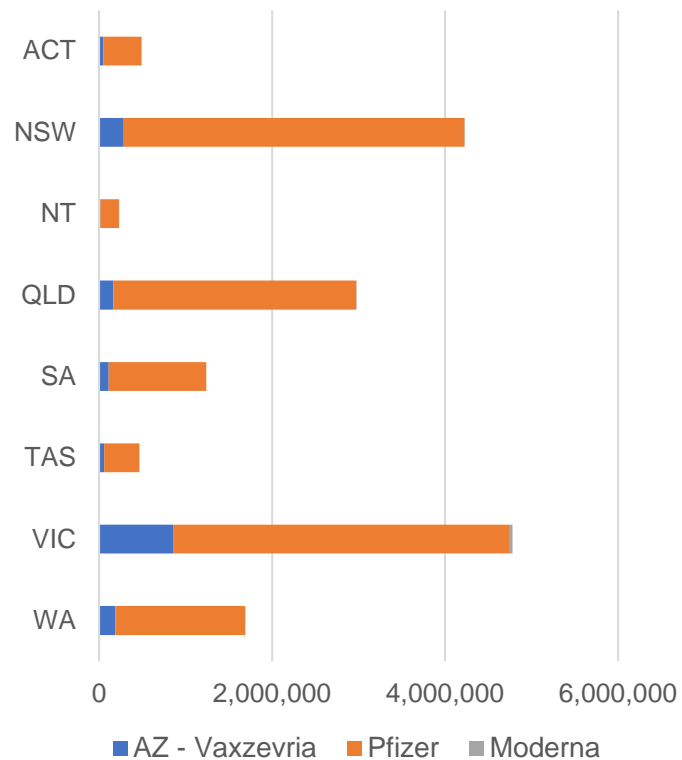
*Status updates are provided by facilities at least once per week. Reporting is updated Monday to Friday to encompass different facility updates being made on different days.

Data is sourced directly from Aged Care Service Providers and is not drawn or closely aligned with data from AIR due to inconsistencies and potential lags in uploading of records.

Data as at:
06 Dec 2021

Jurisdiction administered

Total vaccine doses administered in State and Territory clinics as at 06 December



16,099,145 total vaccine doses administered
in State and Territory clinics as at 06 December
+ **26,272** recorded in the last 24 hours
+ **184,065** recorded in the last 7 days

NSW
4,227,427
(+2,919 daily
increase)

VIC
4,782,005
(+3,720 daily
increase)

QLD
2,974,401
(+8,885 daily
increase)

WA
1,691,452
(+4,909 daily
increase)

TAS
464,944
(+357 daily
increase)

SA
1,237,690
(+3,033 daily
increase)

ACT
491,202
(+1,825 daily
increase)

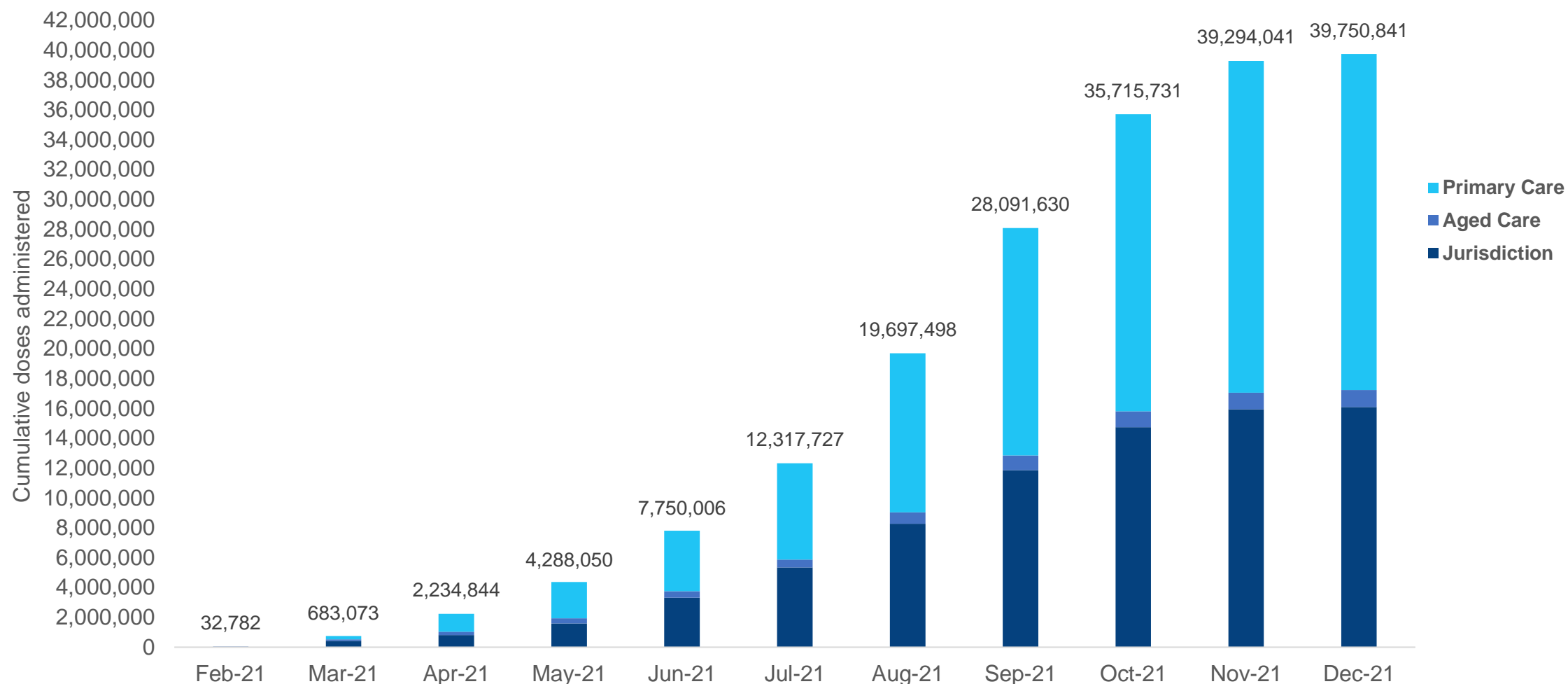
NT
230,024
(+624 daily
increase)

*Sourced from the Australian Immunisation Register and self-reported data. Numbers are calculated as difference in daily cumulative reported numbers to allow for historical corrections in all self-reported data sources.

Cumulative doses administered by channel

Data as at:
06 Dec 2021

Australia's COVID-19
Vaccine Roadmap



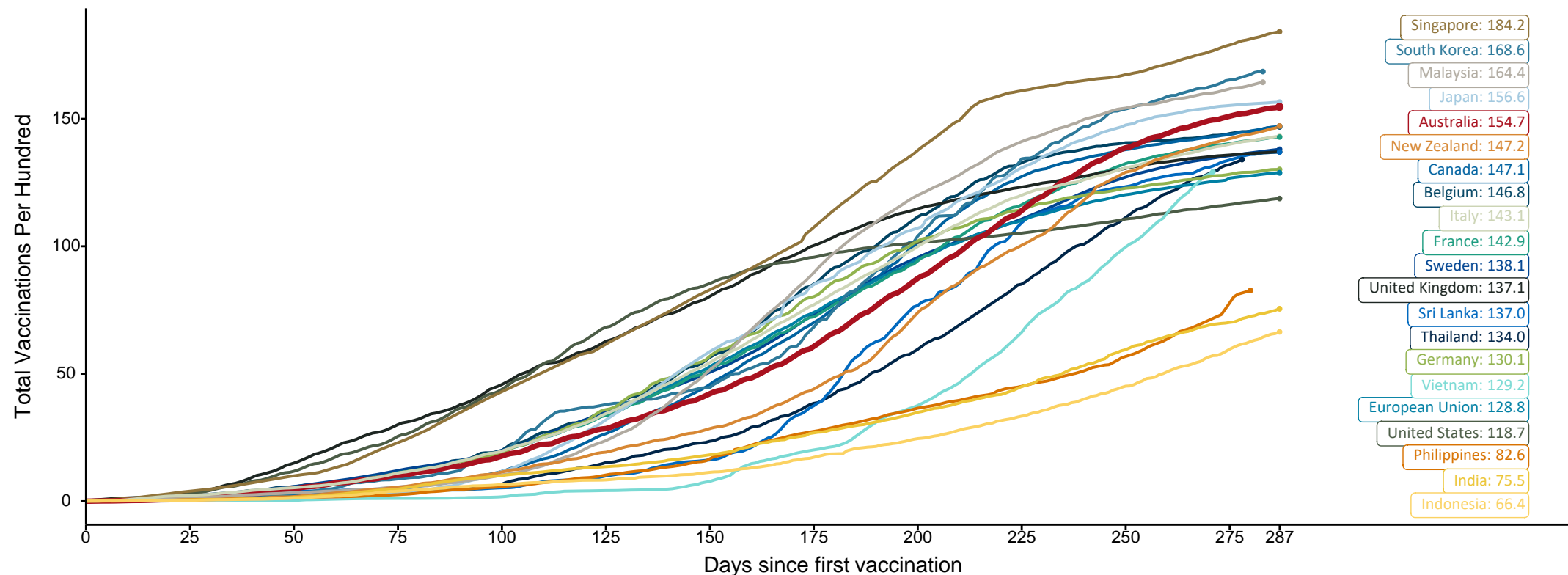
Source: Australian Immunisation Register

Doses at equivalent stages of rollout (Day 287)

Data as at:
06 Dec 2021

The x-axis is truncated at the length of Australia's vaccination program. Countries with intermittent reporting have had their doses per 100 imputed to Australia's current stage of rollout. Israel excluded as it is beyond scale of the graph

Cumulative doses administered (06 Dec): **39,750,841**

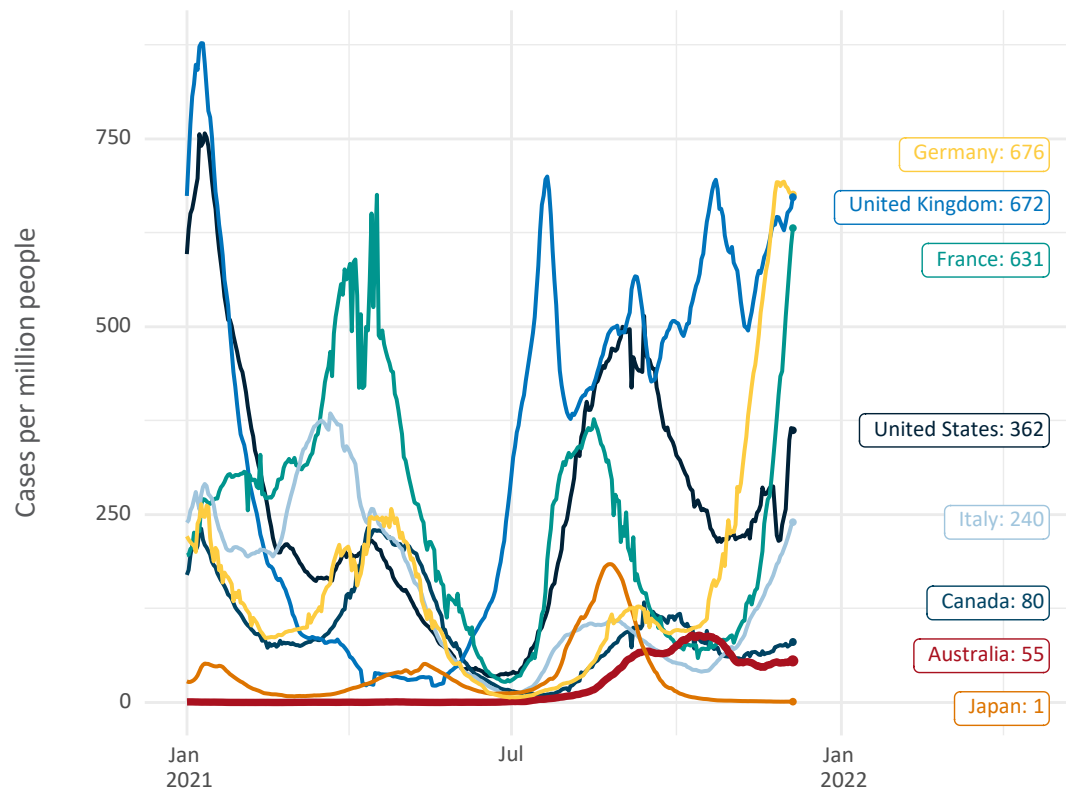


Note: From 15 September 2021, data for Australia includes all doses administered to people 12 and over. Prior to 15 September, data was for 16 and over
Source: Department of Health (Australia), Our World in Data (international)
Latest data: 06 December

International data – COVID-19

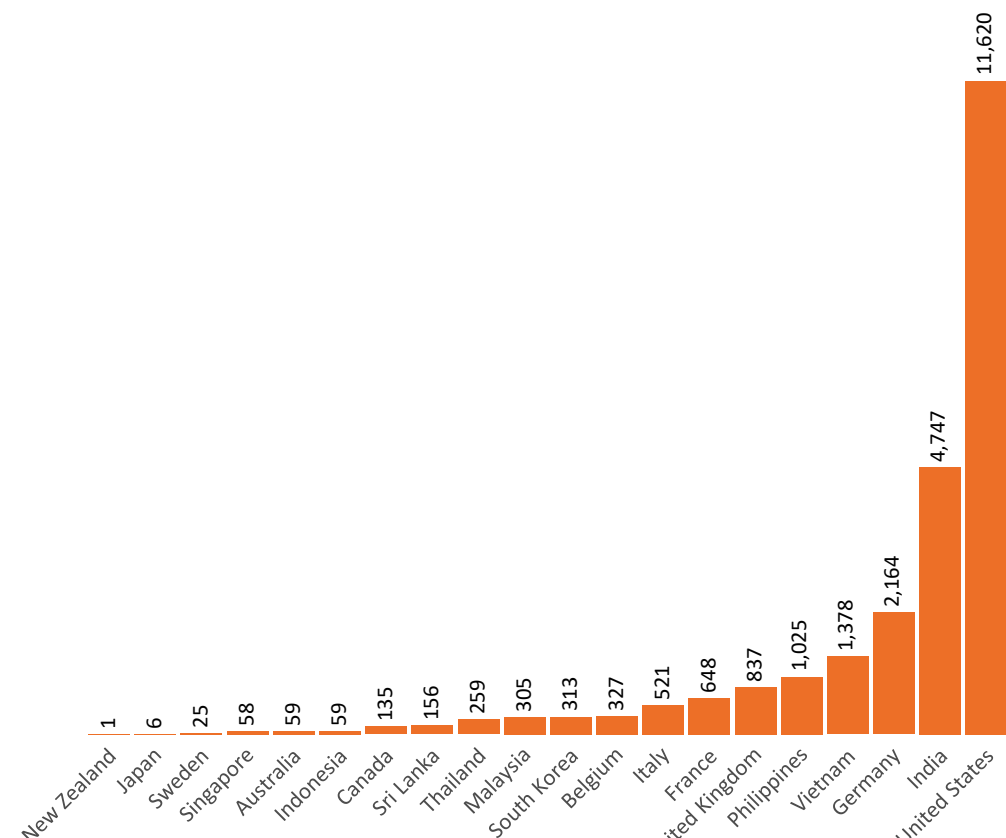
Data as at:
06 Dec 2021

New daily cases per million in 2021, Australia and G7 countries
Smoothed - 7 day average



Source: OWID
Data downloaded: 07 Dec 2021 08:02
Latest data: 05 Dec 2021

COVID-19 deaths in past 7 days - Australia and select countries



Source: OWID
Data downloaded: 07 Dec 2021 08:03
Latest data: 05 Dec 2021

Pandemic Response Payments

Australia's COVID-19
Vaccine Roadmap

Data as at midnight:
6 Dec 2021



COVID Disaster Payment:	5.89 million claims received - 2.19 million individuals paid a total of \$12.59 billion.
\$200 Income Support Payment:	352,000 claims received - 183,000 individuals paid a total of \$268.86 million.
Pandemic Leave Disaster Payment:	146,000 claims received - 124,000 individuals paid a total of \$204.70 million.



COVID Disaster Payment

assisting during a lockdown
event in a Commonwealth
hotspot.

Income Support Payment \$200

for income support
recipients who lost at
least 8 hours of work.

Pandemic Leave Disaster Payment

for those who have to
self-isolate, quarantine
or care.

For more information visit:
servicesaustralia.gov.au

COVID-19 DISASTER PAYMENTS

Victoria

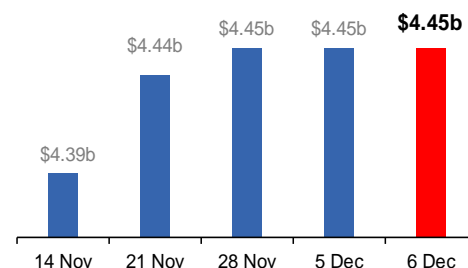
Lockdown (#6) since 6 Aug to 28 Oct
Claiming period ends 9 Dec

**745,000 people have received at least
one COVID Disaster Payment.**

\$4.45b paid out as at 6 Dec 2021.

**\$2.6m paid in initial and reoccurring
payments in the week ending
5 Dec 2021.**

Cumulative payments made by State since
activation on 8 Jun 2021.



Northern Territory

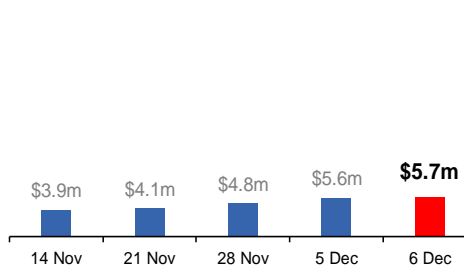
Lockdown (#3) from 16 Nov to 22 Nov
Claiming period ends 27 Dec

**7,000 people have received at least one
COVID Disaster Payment.**

\$5.7m paid out as at 6 Dec 2021.

**\$805,000 paid in initial payments in the
week ending 5 Dec 2021.**

Cumulative payments made by State since
activation on 25 Aug 2021.



New South Wales

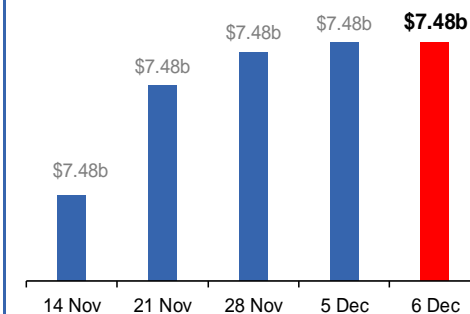
Lockdown from 24 Jun to 10 Oct
Claiming period ended 27 Nov

**1.08m people have received at least
one COVID Disaster Payment.**

\$7.48b paid out as at 6 Dec 2021.

**\$163,000 paid in initial and reoccurring
payments in the week ending
5 Dec 2021.**

Cumulative payments made by State since
activation on 1 Jul 2021.



Australian Capital Territory

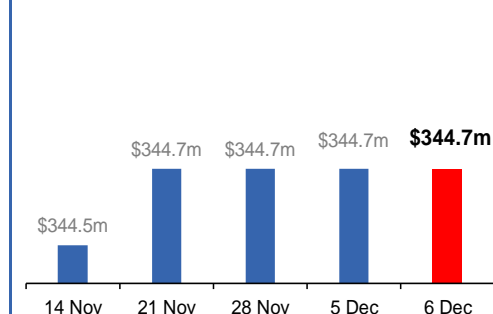
Lockdown since 12 Aug to 14 Oct
Claiming period ended 25 Nov

**65,000 people have received at least
one COVID Disaster Payment.**

\$344.7m paid out as at 6 Dec 2021.

**\$8,000 paid in initial and reoccurring
payments in the week ending
5 Dec 2021.**

Cumulative payments made by State since
activation on 20 Aug 2021.



Pandemic Response Payments (continued)

Data as at midnight:
6 Dec 2021

COVID-19 DISASTER PAYMENTS


Tasmania

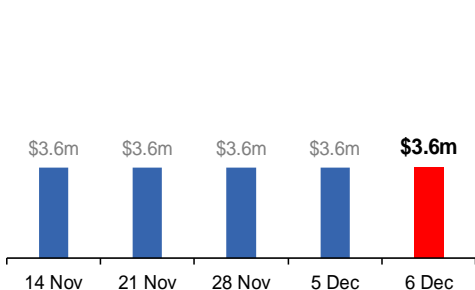
Lockdown from 15 Oct to 18 Oct
Claiming period ended 12 Nov

6,900 people have received at least one COVID Disaster Payment.

\$3.6m paid out as at 6 Dec 2021.

\$2,000 paid in initial payments in the week ending 5 Dec 2021.

 Cumulative payments made by State since activation on 22 Oct 2021.




Queensland

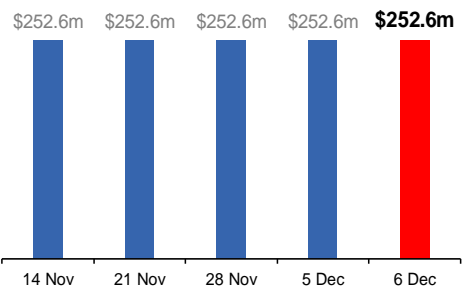
Lockdown from 31 Jul to 11 Aug
Claiming period ended 28 Aug

196,000 people have received at least one COVID Disaster Payment.

\$252.6m paid out as at 6 Dec 2021.

\$9,000 paid in initial and reoccurring payments in the week ending 5 Dec 2021.

 Cumulative payments made by State since activation on 7 Aug 2021.




South Australia

Lockdown from 21 to 27 Jul
Claiming period ended 17 Aug

86,000 people have received at least one COVID Disaster Payment.

\$48.2m paid out as at 6 Dec 2021.

\$1,200 paid in initial and reoccurring payments in the week ending 5 Dec 2021.

 Cumulative payments made by State since activation on 28 Jul 2021.

