



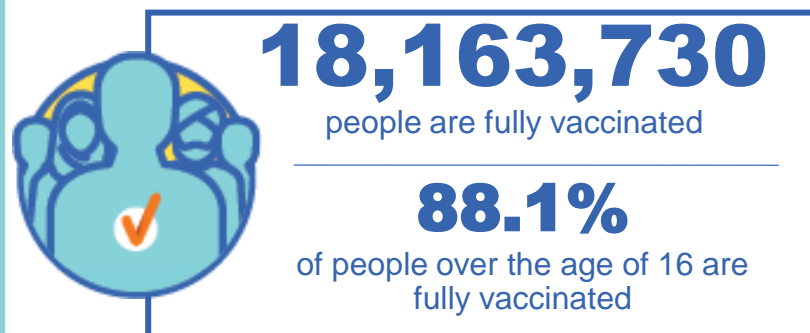
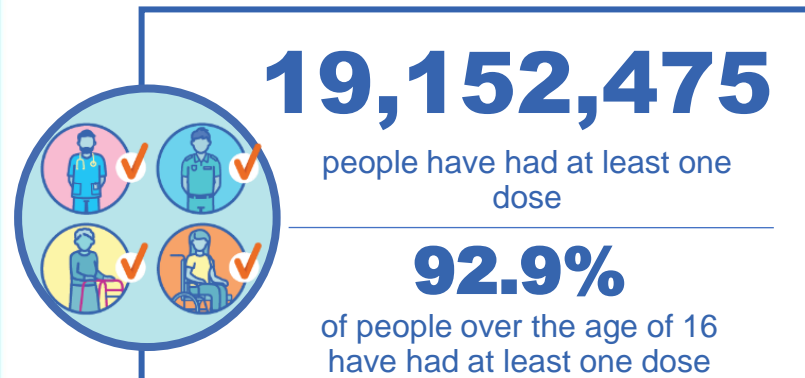
**Australian Government**  
**Operation COVID Shield**

# COVID-19 Vaccine Rollout

06 December 2021

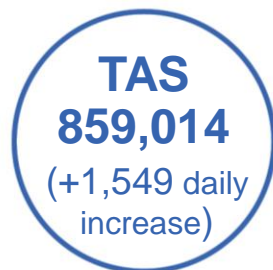
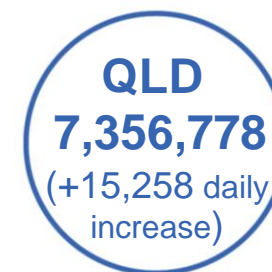
Data as at:  
05 Dec 2021

## Total vaccine doses



**39,663,971** total vaccine doses administered nationally as at 05 December

**+30,611** recorded in the last 24 hours



\*Administration state breakdown indicates state in which a vaccine was administered

\*\*Overall dose count includes instances of more than two doses per person in a small number of cases.

Source: Australian Immunisation Register

Data as at:  
05 Dec 2021

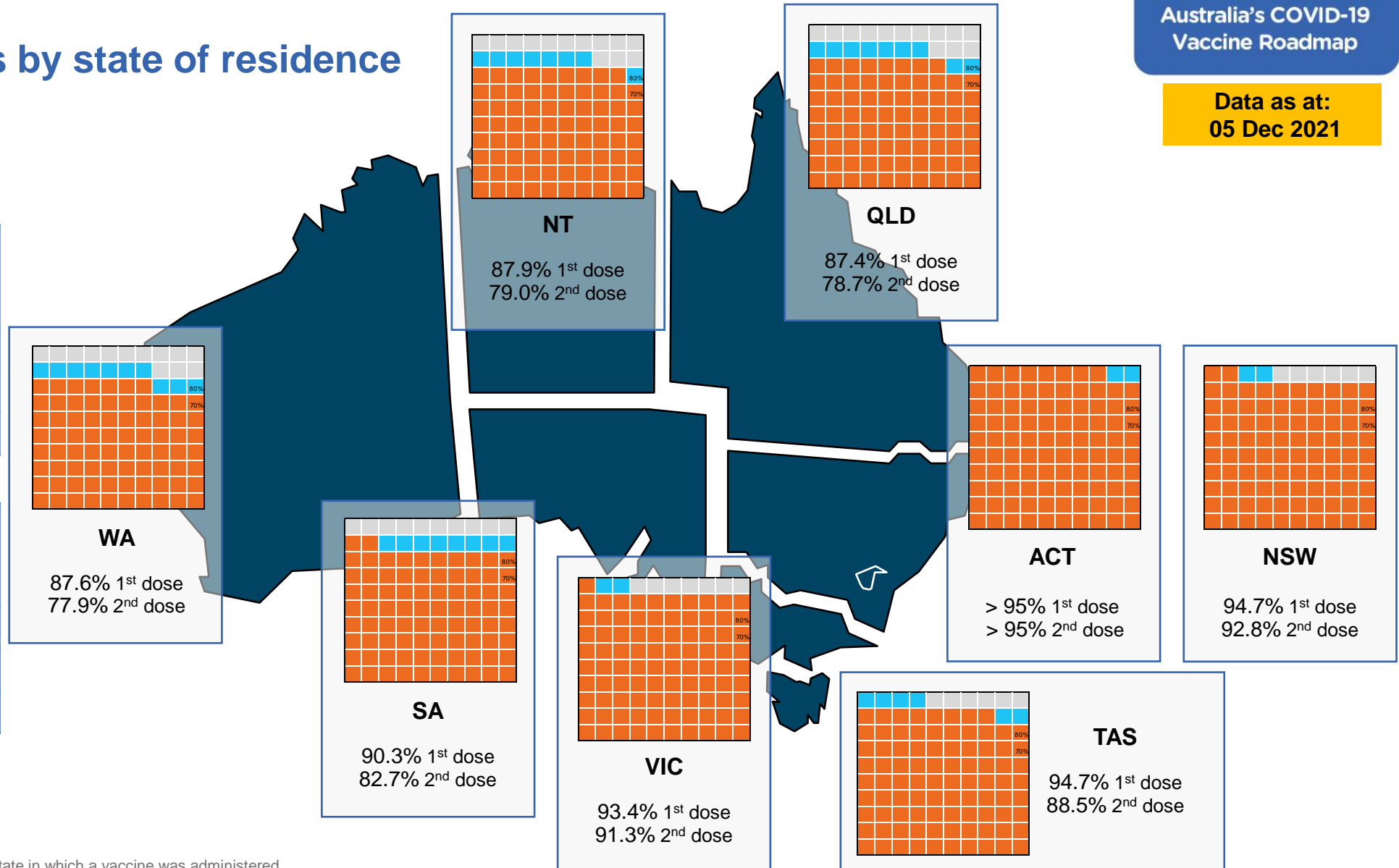
## Vaccinations by state of residence

### First doses

Age	Today	4 weeks ago	8 weeks ago
16+	92.9%	89.6%	83.2%
50+	>95%	>95%	92.6%
70+	>95%	>95%	>95%

### Fully vaccinated

Age	Today	4 weeks ago	8 weeks ago
16+	88.1%	81.1%	63.6%
50+	94.5%	89.1%	77.6%
70+	>95%	93.4%	84.1%



\*Residential state may differ from the state in which a vaccine was administered

## Commonwealth and Jurisdiction vaccine doses administered

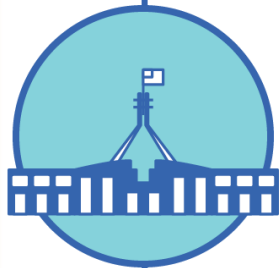
Data as at:  
05 Dec 2021



**39,663,971** total vaccine  
doses administered nationally as at 05 December  
**+ 30,611** recorded in the last 24 hours



**16,072,873**  
doses administered by state  
and territory facilities  
**+ 20,349**  
recorded in the last 24 hours



**23,591,098**  
doses administered by  
commonwealth facilities  
**+ 10,262**  
recorded in the last 24 hours  
**22,455,247** total vaccine doses  
administered in primary care settings  
**1,135,851** total vaccine doses  
administered in aged care and disability  
settings

NSW	Jurisdictions	Commonwealth
Cumulative	4,224,508	8,776,167
Daily increase	530	1,287

VIC	Jurisdictions	Commonwealth
Cumulative	4,778,285	5,972,774
Daily increase	1,642	1,464

QLD	Jurisdictions	Commonwealth
Cumulative	2,965,516	4,391,262
Daily increase	11,321	3,937

WA	Jurisdictions	Commonwealth
Cumulative	1,686,543	2,026,488
Daily increase	2,649	2,244

TAS	Jurisdictions	Commonwealth
Cumulative	464,587	394,427
Daily increase	1,130	419

SA	Jurisdictions	Commonwealth
Cumulative	1,234,657	1,392,610
Daily increase	2,531	740

ACT	Jurisdictions	Commonwealth
Cumulative	489,377	477,821
Daily increase	403	168

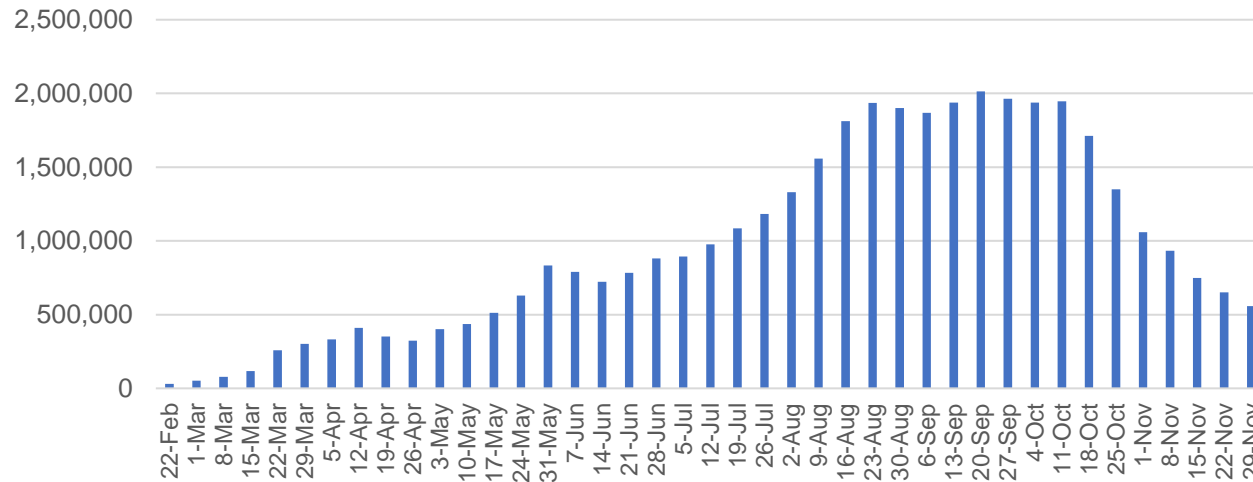
NT	Jurisdictions	Commonwealth
Cumulative	229,400	159,549
Daily increase	143	3

# Vaccine milestone charts

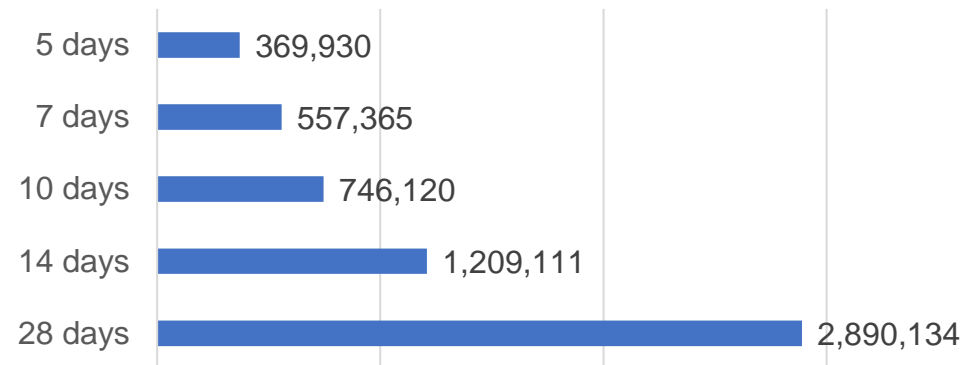
Data as at:  
05 Dec 2021

Australia's COVID-19  
Vaccine Roadmap

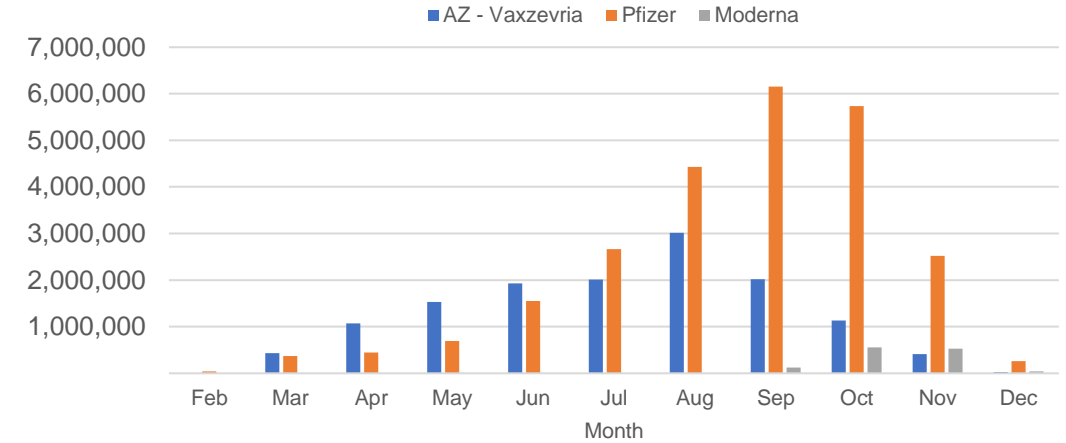
Doses Administered by Week



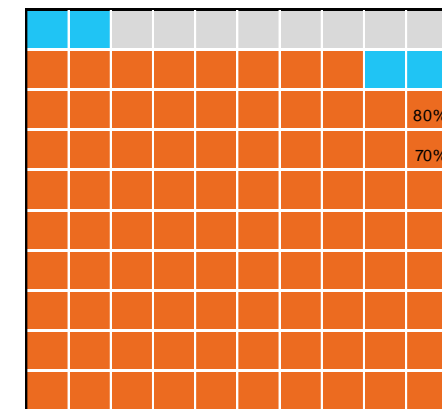
Doses Reported



Doses by administration month and vaccine type



Eligible population percentage coverage



\*Each square represents 1% of the national population.  
Squares are filled as milestones are achieved.

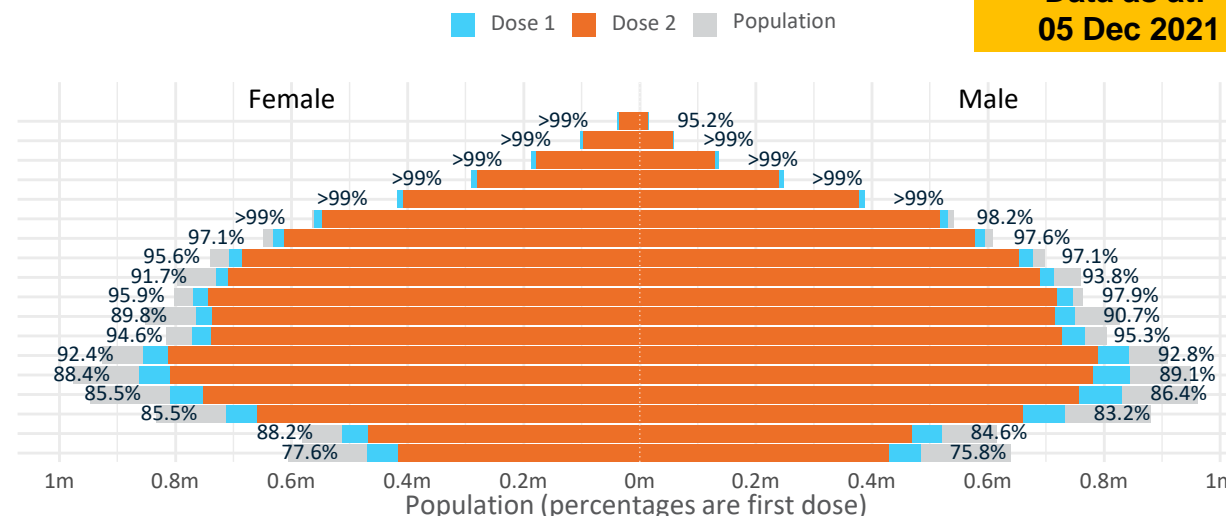
# Doses by age and sex

First and second doses by age and sex

Australia's COVID-19  
Vaccine Roadmap

Data as at:  
05 Dec 2021

Age	Dose 1	Dose 2
95+	52,923 (>99%)	48,547 (91.8%)
90-94	162,336 (>99%)	152,980 (96.6%)
85-89	322,156 (>99%)	308,010 (97.4%)
80-84	537,545 (>99%)	520,124 (98.4%)
75-79	806,194 (>99%)	784,885 (>99%)
70-74	1,092,229 (98.8%)	1,064,161 (96.3%)
65-69	1,225,982 (97.4%)	1,190,354 (94.6%)
60-64	1,385,530 (96.4%)	1,339,736 (93.3%)
55-59	1,443,425 (92.8%)	1,399,387 (90.0%)
50-54	1,516,460 (96.9%)	1,462,380 (93.5%)
45-49	1,514,516 (90.3%)	1,451,907 (86.6%)
40-44	1,540,877 (95.1%)	1,466,612 (90.5%)
35-39	1,703,720 (92.8%)	1,605,320 (87.5%)
30-34	1,715,444 (89.2%)	1,595,661 (82.9%)
25-29	1,648,998 (86.5%)	1,515,224 (79.5%)
20-24	1,450,485 (84.7%)	1,321,819 (77.2%)
16-19	1,033,655 (86.4%)	936,623 (78.3%)
12-15	954,282 (76.7%)	845,025 (67.9%)



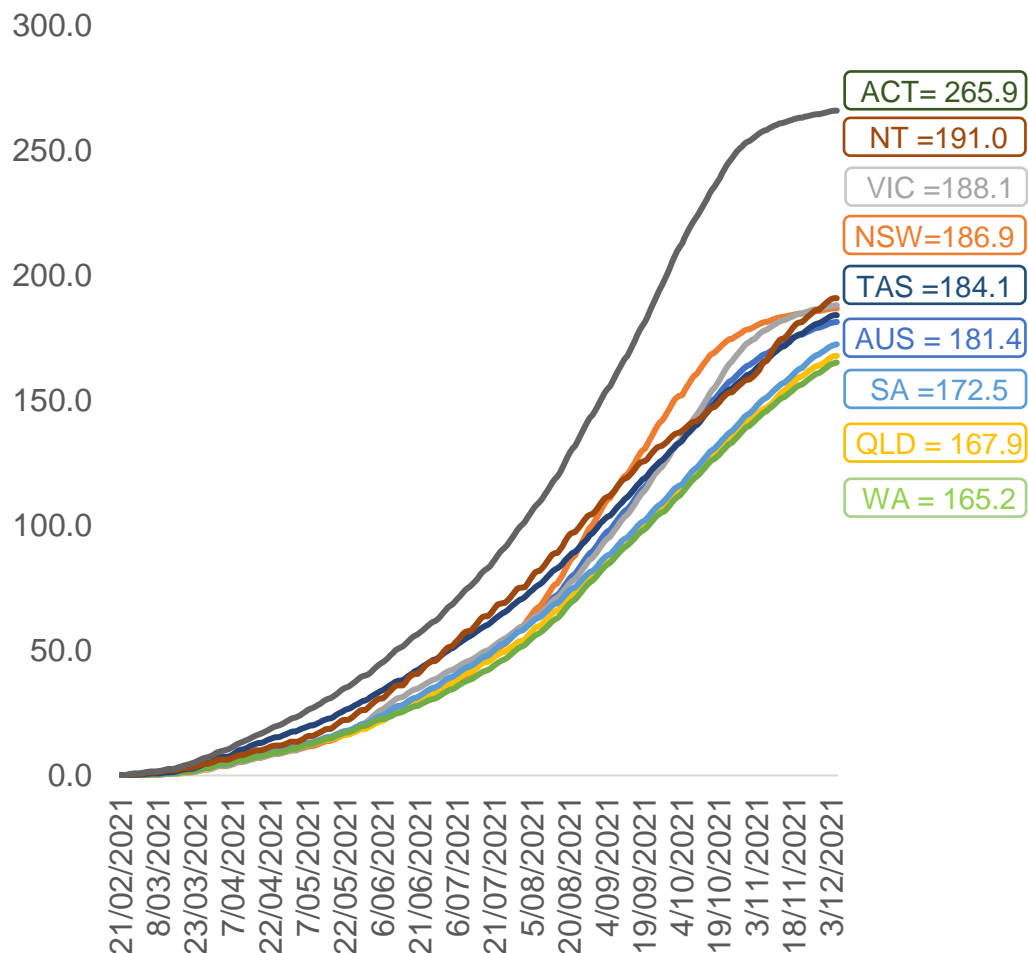
	AUS	ACT	NSW	NT	QLD	SA	TAS	VIC	WA
16 and over - dose 1	19,152,475	345,972	6,214,889	167,492	3,593,425	1,300,845	416,679	5,052,870	1,852,178
16 and over - dose 2	18,163,730	339,577	6,095,035	150,556	3,235,525	1,190,595	389,704	4,935,294	1,648,487
16 and over - population	20,619,959*	344,037	6,565,651	190,571	4,112,707	1,440,400	440,172	5,407,574	2,114,978
16 and over % with dose 1	92.88%	>99%	94.66%	87.89%	87.37%	90.31%	94.66%	93.44%	87.57%
16 and over % with dose 2	88.09%	98.70%	92.83%	79.00%	78.67%	82.66%	88.53%	91.27%	77.94%
50 and over - dose 1	8,544,780	133,883	2,770,351	56,143	1,659,676	645,352	212,664	2,171,960	837,154
50 and over - dose 2	8,270,564	131,929	2,729,350	52,853	1,575,224	611,035	203,375	2,130,130	785,731
50 and over - population	8,749,703	127,802	2,807,793	62,280	1,758,855	674,384	220,036	2,211,211	885,370
50 and over % with dose 1	97.66%	>99%	98.67%	90.15%	94.36%	95.70%	96.65%	98.22%	94.55%
50 and over % with dose 2	94.52%	>99%	97.21%	84.86%	89.56%	90.61%	92.43%	96.33%	88.75%
70 and over - dose 1	2,973,383	43,674	979,157	11,513	571,611	241,275	78,115	749,219	276,878
70 and over - dose 2	2,878,707	42,855	960,996	10,888	547,292	229,081	74,493	731,441	262,289
70 and over - population	2,934,706	39,946	962,606	12,343	577,767	240,514	77,155	743,519	280,281
70 and over % with dose 1	>99%	>99%	>99%	93.28%	98.93%	>99%	>99%	>99%	98.79%
70 and over % with dose 2	98.09%	>99%	>99%	88.21%	94.73%	95.25%	96.55%	98.38%	93.58%
12 to 15 - dose 1	954,282	19,717	317,490	9,572	176,140	57,860	19,522	269,102	77,386
12 to 15 - dose 2	845,025	18,942	301,333	7,503	143,136	45,461	16,362	247,181	59,348
12 to 15 - population	1,243,990	19,693	390,330	13,060	270,146	82,747	26,308	308,611	132,869
12 to 15 % with dose 1	76.71%	>99%	81.34%	73.29%	65.20%	69.92%	74.21%	87.20%	58.24%
12 to 15 % with dose 2	67.93%	96.19%	77.20%	57.45%	52.98%	54.94%	62.19%	80.09%	44.67%

\*National population will not equal sum of listed jurisdictions due to a small number of people counted in national population residing in some 'other' territories. Sum of state doses will not add to national total as some records are unable to be geocoded to a State or Territory.

Doses sourced from Australian Immunisation Register, population from ABS ERP June 2020

# Vaccinations by location

Cumulative total doses administered vs eligible state populations\*

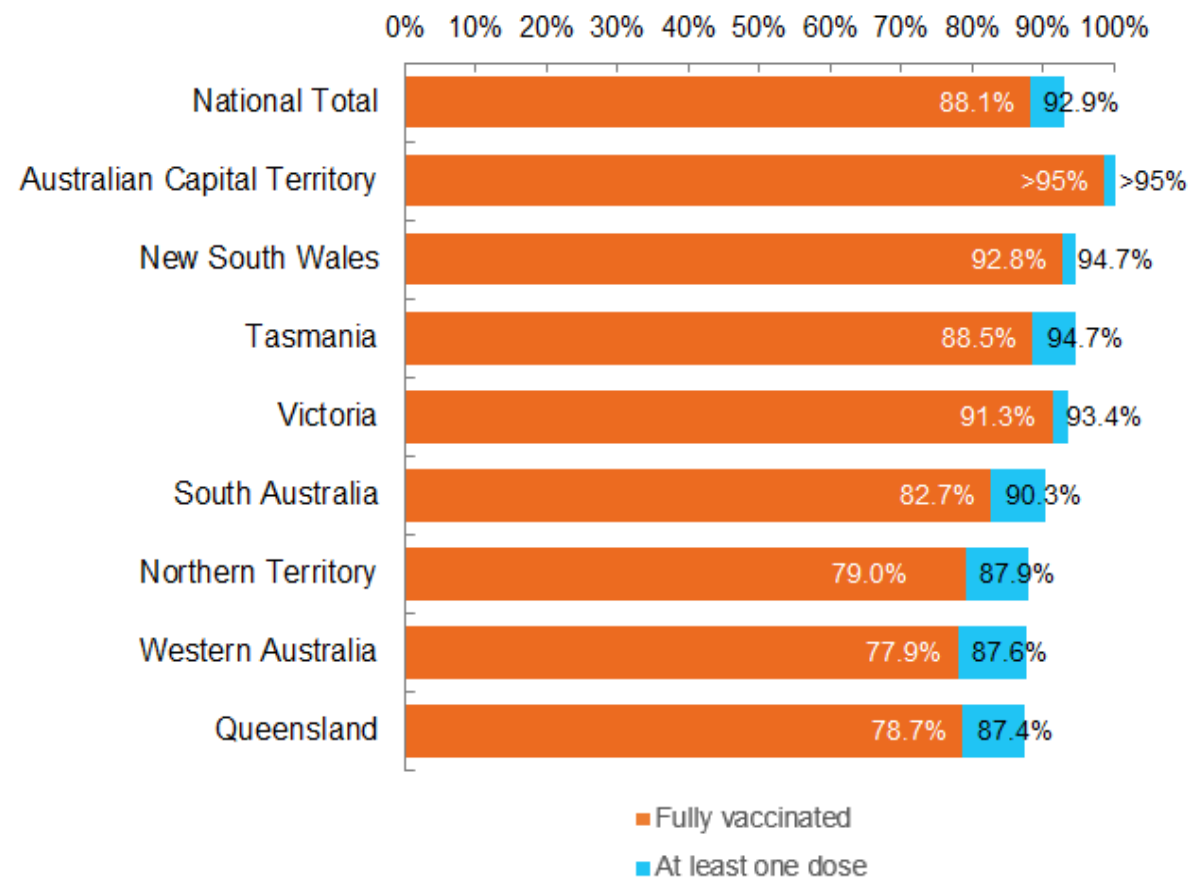


\*Not an indication of percentage vaccinated, numbers will exceed 100 due to multiple doses required per person of the population. All doses are included, including those for the 12-15 cohort, and are based on vaccination provider location.

Data as at:  
05 Dec 2021

Australia's COVID-19  
Vaccine Roadmap

First and Second Doses by state of residence



# Aboriginal and Torres Strait Islander peoples

## Number of people vaccinated

Data as at:  
30 Nov 2021  
Updated weekly

Australia's COVID-19  
Vaccine Roadmap



**391,929**

people over the age of 16  
have had at least one dose

**73.9%**

of people over the age of 16  
have had at least one dose



**331,966**

people over the age of 16  
are fully vaccinated

**62.4%**

of people over the age of 16 are  
fully vaccinated



**39,188  
(54.7%)**

people aged 12-15 years  
have had at least one dose

## 173 Aboriginal community controlled health services (ACCHS)

0#	50	27	41	12	3	21	19
<b>ACT</b>	<b>NSW</b>	<b>NT</b>	<b>QLD</b>	<b>SA</b>	<b>TAS</b>	<b>VIC</b>	<b>WA</b>

Medicare Address State <sup>##</sup>	Individuals Dose 1	Individuals Dose 1 %	Individuals Dose 2	Individuals Dose 2 %
Australian Capital Territory	4,913	90.0%	4,691	85.8%
New South Wales	136,813	85.3%	130,695	81.4%
Northern Territory	36,749	79.8%	28,194	60.9%
Queensland	96,092	66.7%	73,689	51.1%
South Australia	17,403	67.8%	13,804	53.5%
Tasmania	13,704	79.4%	12,364	71.4%
Victoria	35,451	87.5%	33,389	82.3%
Western Australia	36,959	57.5%	25,432	39.4%
Unknown/Other Territories	13,845	51.3%	9,708	35.8%
<b>Totals</b>	<b>391,929</b>	<b>73.9%</b>	<b>331,966</b>	<b>62.4%</b>

Source: Australian Immunisation Register

\*Identifying as Aboriginal and Torres Strait Islander is optional and the estimated population may be under reported.

\*\*Includes all Aboriginal and Torres Strait Islander peoples who have received a vaccination, not limited to those administered in an ACCHS setting

#ACCHS in the ACT are currently operating as a Commonwealth Vaccine Clinics so not included to avoid double counting

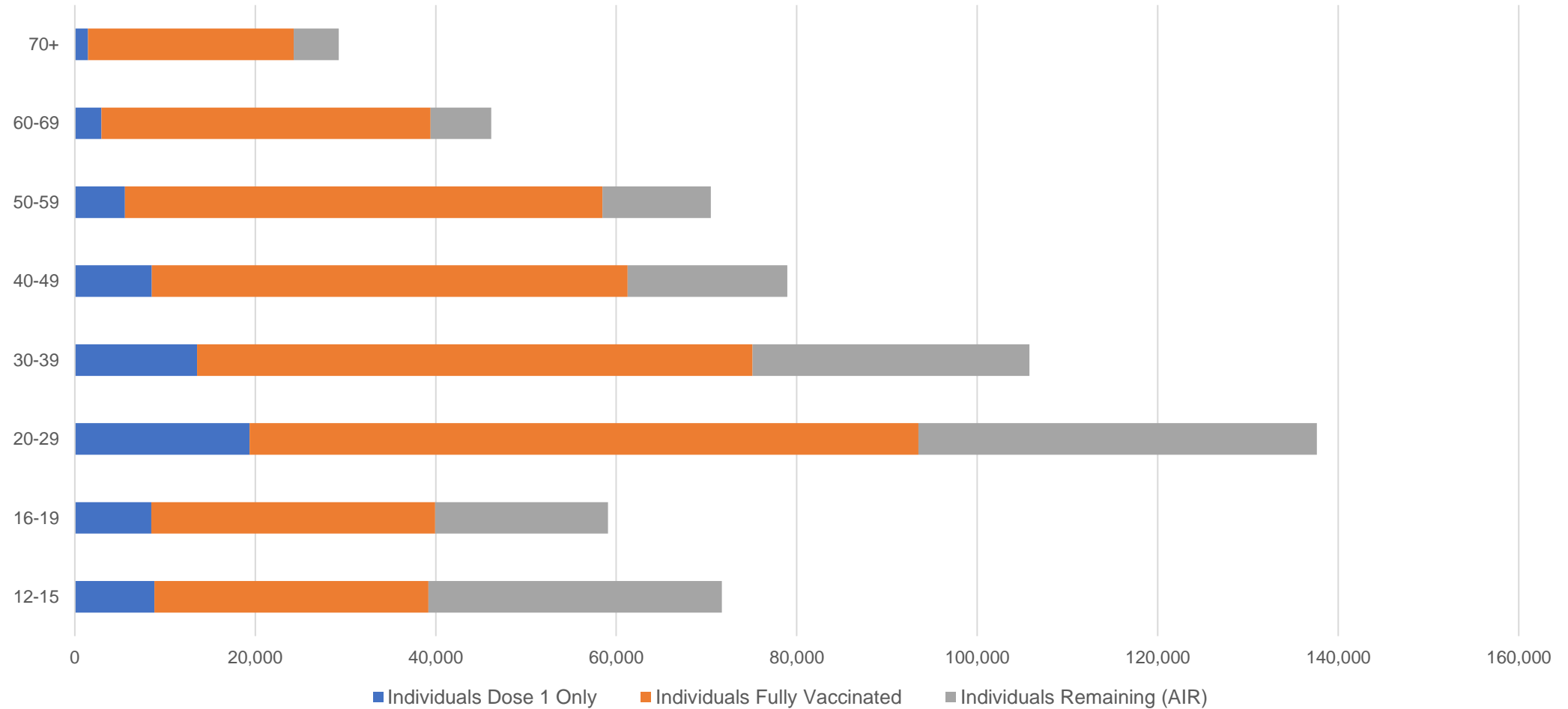
##The above table includes all identified Aboriginal and Torres Strait Islander people who are aged 16 and above by their state of residence.

# Aboriginal and Torres Strait Islander peoples

## Number of people vaccinated by age

Data as at:  
30 Nov 2021  
Updated weekly

Australia's COVID-19  
Vaccine Roadmap



Source: Australian Immunisation Register

Data as at:  
05 Dec 2021

## Commonwealth primary care



### Primary care vaccine administration sites

<b>5,654</b>	<b>137</b>	<b>173</b>	<b>3,457</b>
GPs	CVCs	ACCHS	Pharmacies



**22,455,247** total vaccine doses administered  
primary care settings as at 05 December  
**+ 9,544** recorded in the last 24 hours

### Primary care vaccinations by provider type

	Doses administered	Daily increase	7 day increase
<b>General Practice*</b> includes other Commonwealth	20,032,774	6,623	244,727
<b>Pharmacy</b>	2,422,473	2,921	106,507

**NSW**  
**8,274,753**  
(+1,331 daily increase)

**VIC**  
**5,723,113**  
(+1,396 daily increase)

**QLD**  
**4,158,687**  
(+3,782 daily increase)

**WA**  
**1,931,957**  
(+2,047 daily increase)

**TAS**  
**380,713**  
(+334 daily increase)

**SA**  
**1,327,707**  
(+716 daily increase)

**ACT**  
**354,976**  
(+86 daily increase)

**NT**  
**140,867**  
(-6<sup>#</sup> daily increase)

**162,474** doses administered to persons  
residing in other territories or with  
missing residential information

\*General practice includes Commonwealth Vaccination Clinics, Aboriginal Community Health Centres, Royal Flying Doctor Service and other Commonwealth vaccination facilities  
# Numbers are calculated as difference in daily cumulative reported numbers to allow for historical corrections in all data sources. This can occasionally result in negative numbers, such as for NT, where historical details about doses have been updated.

Source: Australian Immunisation Register

Data as at:  
05 Dec 2021

# Commonwealth aged care and disability doses administered



**1,135,851** (+ 718 last 24 hours)

Total vaccine doses administered in aged care and disability facilities as at 05 December

Number of doses administered as part of the Commonwealth aged and disability care rollout

**NSW**  
**527,273**  
(+137 daily increase)

**VIC**  
**210,798**  
(+67 daily increase)

**QLD**  
**174,248**  
(+116 daily increase)

**WA**  
**81,387**  
(+177 daily increase)

**TAS**  
**19,991**  
(+58 daily increase)

**SA**  
**73,275**  
(+90 daily increase)

**ACT**  
**14,838**  
(+70 daily increase)

**NT**  
**6,485**  
(+8 daily increase)

**27,556**

doses administered to persons  
residing in other territories or with  
missing residential information

\*Sourced from the Australian Immunisation Register. Includes all persons vaccinated at participating residential aged care, disability and related industry settings.

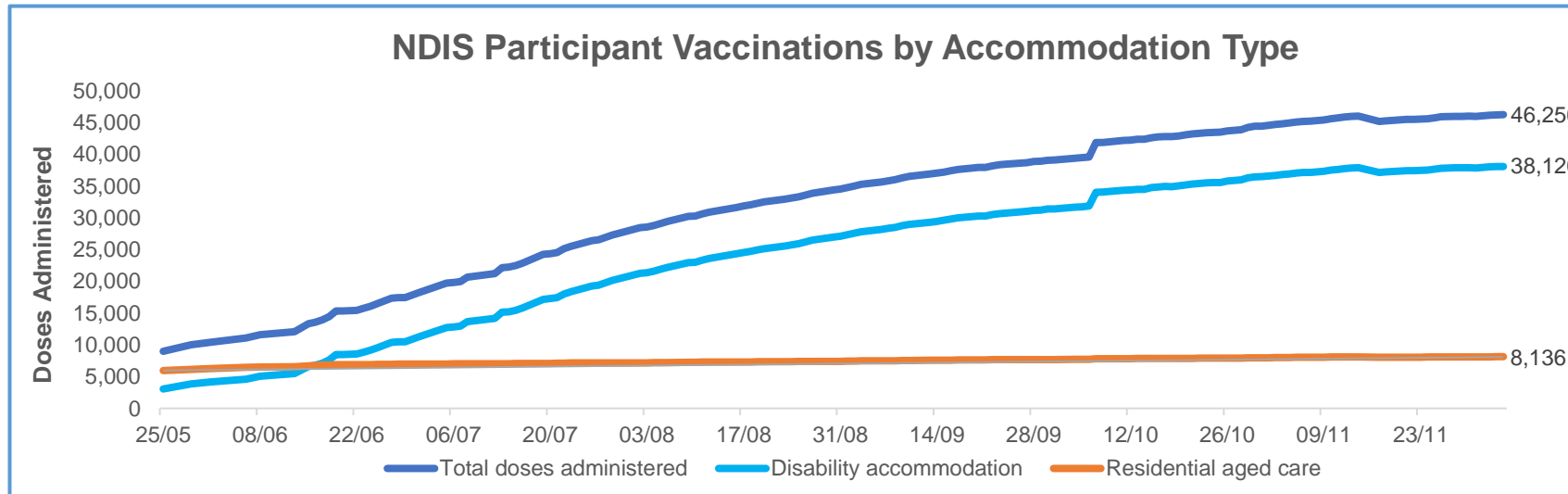
\*\*State level breakdown indicates the residential location and may not align to the state in which the vaccination occurred.

Source: Australian Immunisation Register

Data as at:  
05 Dec 2021\*

# Vaccination rate of people with disability and the disability workforce

## Phase 1a – People with disability living in shared accommodation



	Total people with at least one dose	People fully vaccinated	Total number of individuals in cohort	Total doses administered	% People with at least one dose	% People fully vaccinated
NDIS participants living in shared accommodation **	23,600	22,656	27,603	46,256	85.5%	82.1%
NDIS screened workers ***	220,892	209,953	251,862	430,845	87.7%	83.4%



\* Updates are available Monday to Friday on participants, and bi-weekly for workers, numbers may be up to four days old.

\*\* Shared accommodation means two or more people with disability living in shared residential accommodation and NDIS participants living in Residential Aged Care accommodation as per the eligibility criteria of Phase 1a. The number of residents changes over time and refinement of methodology can lead to corrections in totals.

\*\*\* Total number of workers within the NDIS Commission Worker Screening database who have ever been successfully screened and linked to an NDIS registered provider or participant.

Source: Linkage between National Disability Insurance Agency data, NDIS Quality and Safeguards Commission data and the Australian Immunisation Register.

## Residential aged care vaccination rollout

### Residential aged care facilities status

**100%** Commonwealth facilities visited (2,565 planned sites)

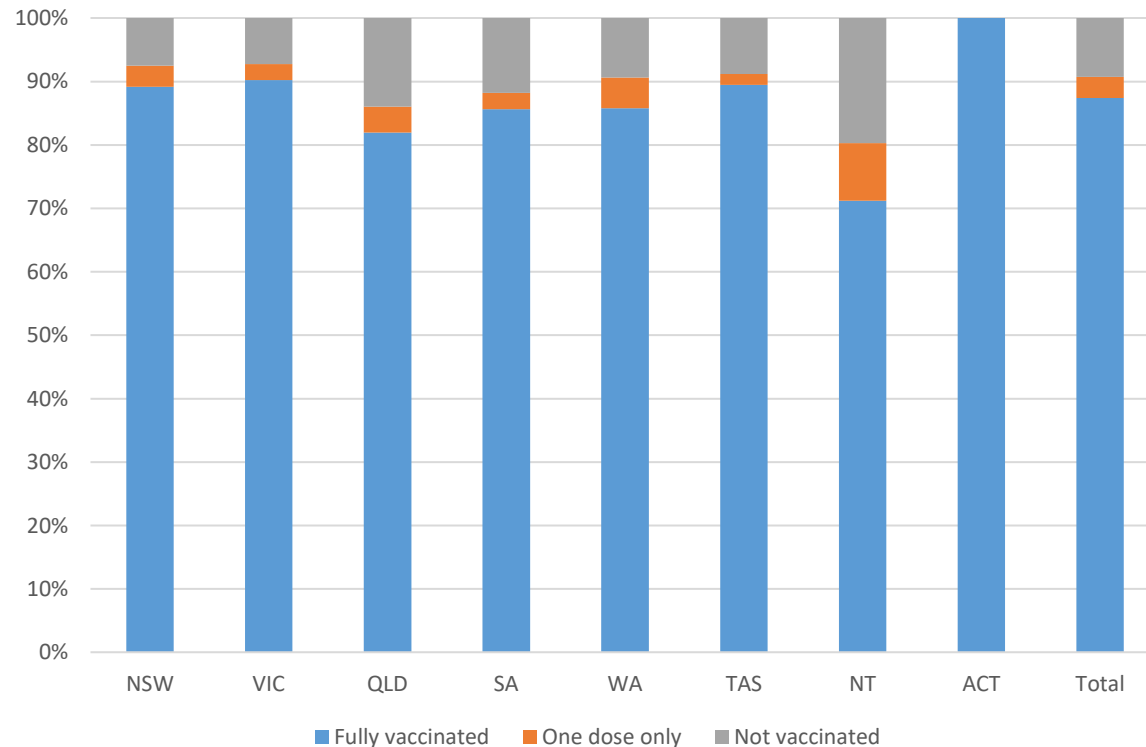
**162,232** People fully vaccinated

**168,516** People with at least one dose

Australia's COVID-19 Vaccine Roadmap

Data as at:  
05 Dec 2021

### Aged care resident vaccinations



### Aged care worker vaccinations

Jurisdictions	Total workers with at least one dose	Workers fully vaccinated	% Workers with at least one dose	% Workers fully vaccinated
NSW	78,878	78,803	99.6%	99.5%
VIC	71,282	71,205	100.0%	99.9%
QLD	48,839	48,613	100.0%	99.5%
SA	27,632	27,195	99.9%	98.3%
WA	23,702	23,537	100.0%	99.3%
TAS	7,678	7,510	100.0%	97.8%
NT	855	850	100.0%	99.4%
ACT	2,997	2,997	100.0%	100.0%
<b>Total</b>	<b>261,863</b>	<b>260,710</b>	<b>99.9%</b>	<b>99.4%</b>

Source: My Aged Care Portal staff vaccination progress

\*\*Resident vaccination information is reported manually by service providers

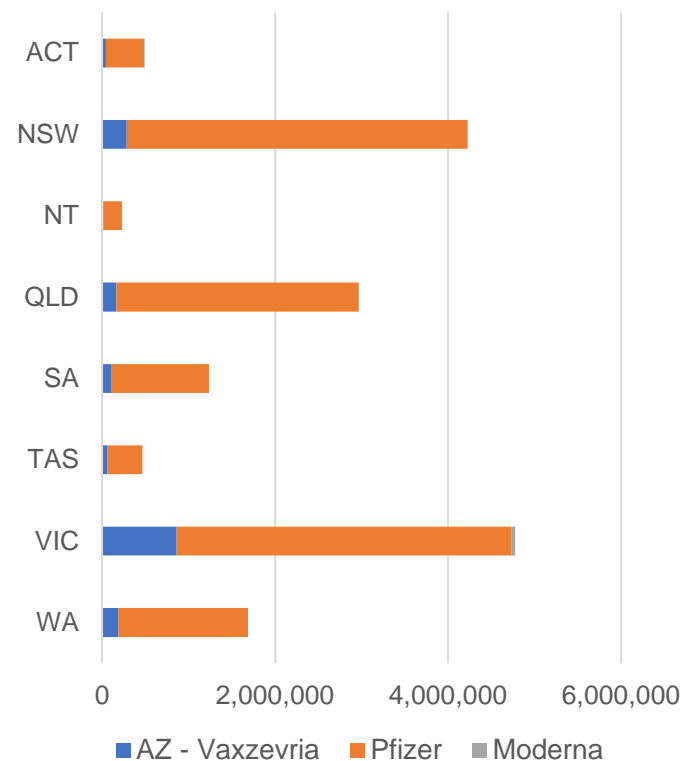
\*Status updates are provided by facilities at least once per week. Reporting is updated Monday to Friday to encompass different facility updates being made on different days.

Data is sourced directly from Aged Care Service Providers and is not drawn or closely aligned with data from AIR due to inconsistencies and potential lags in uploading of records.

Data as at:  
05 Dec 2021

# Jurisdiction administered

Total vaccine doses administered in State and Territory clinics as at 05 December



**16,072,873** total vaccine doses administered  
in State and Territory clinics as at 05 December  
+ **20,349** recorded in the last 24 hours  
+ **184,236** recorded in the last 7 days

**NSW**  
**4,224,508**  
(+530 daily increase)

**VIC**  
**4,778,285**  
(+1,642 daily increase)

**QLD**  
**2,965,516**  
(+11,321 daily increase)

**WA**  
**1,686,543**  
(+2,649 daily increase)

**TAS**  
**464,587**  
(+1,130 daily increase)

**SA**  
**1,234,657**  
(+2,531 daily increase)

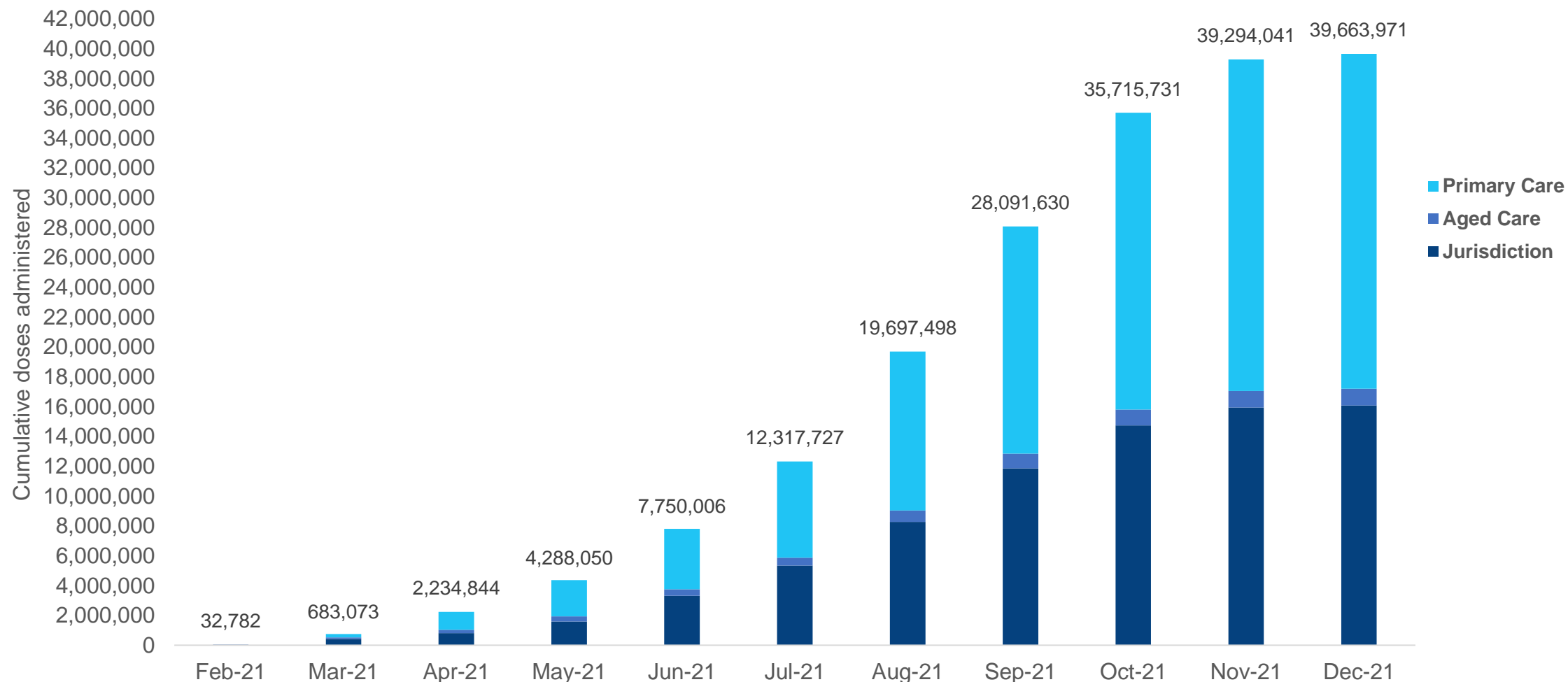
**ACT**  
**489,377**  
(+403 daily increase)

**NT**  
**229,400**  
(+143 daily increase)

\*Sourced from the Australian Immunisation Register and self-reported data. Numbers are calculated as difference in daily cumulative reported numbers to allow for historical corrections in all self-reported data sources.

# Cumulative doses administered by channel

Data as at:  
05 Dec 2021



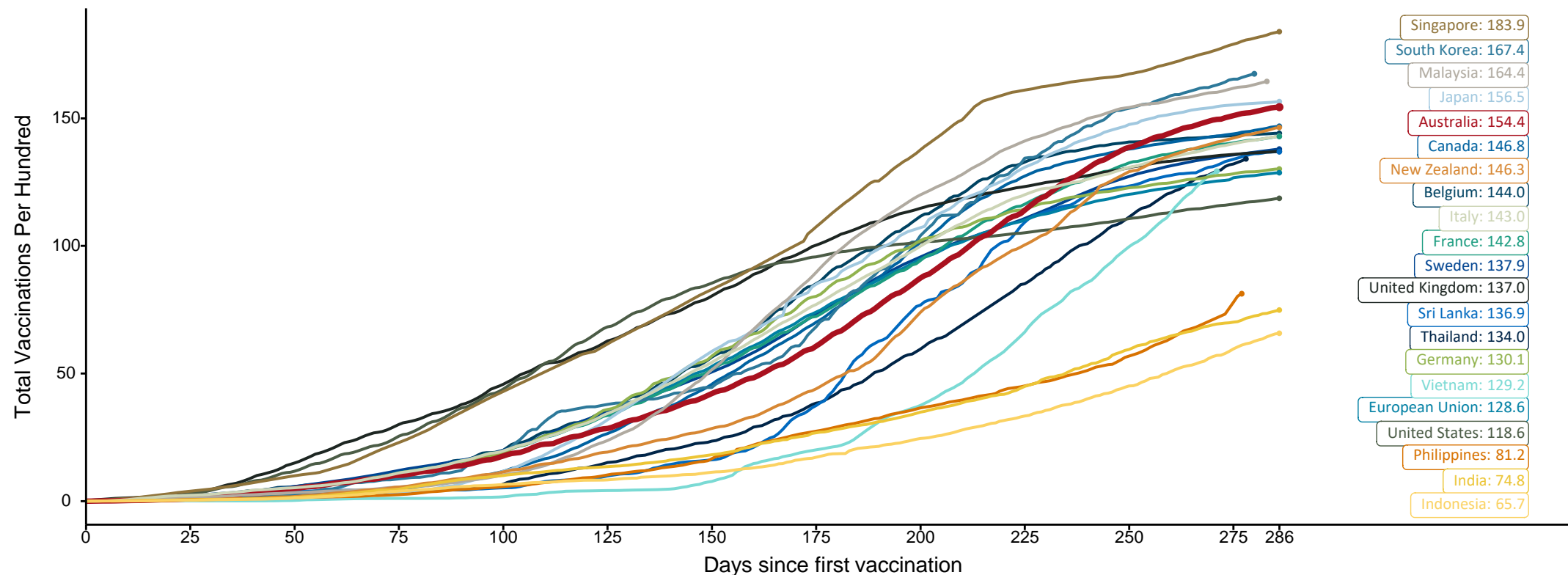
Source: Australian Immunisation Register

# Doses at equivalent stages of rollout (Day 286)

Data as at:  
05 Dec 2021

The x-axis is truncated at the length of Australia's vaccination program. Countries with intermittent reporting have had their doses per 100 imputed to Australia's current stage of rollout. Israel excluded as it is beyond scale of the graph

Cumulative doses administered (05 Dec): **39,663,971**

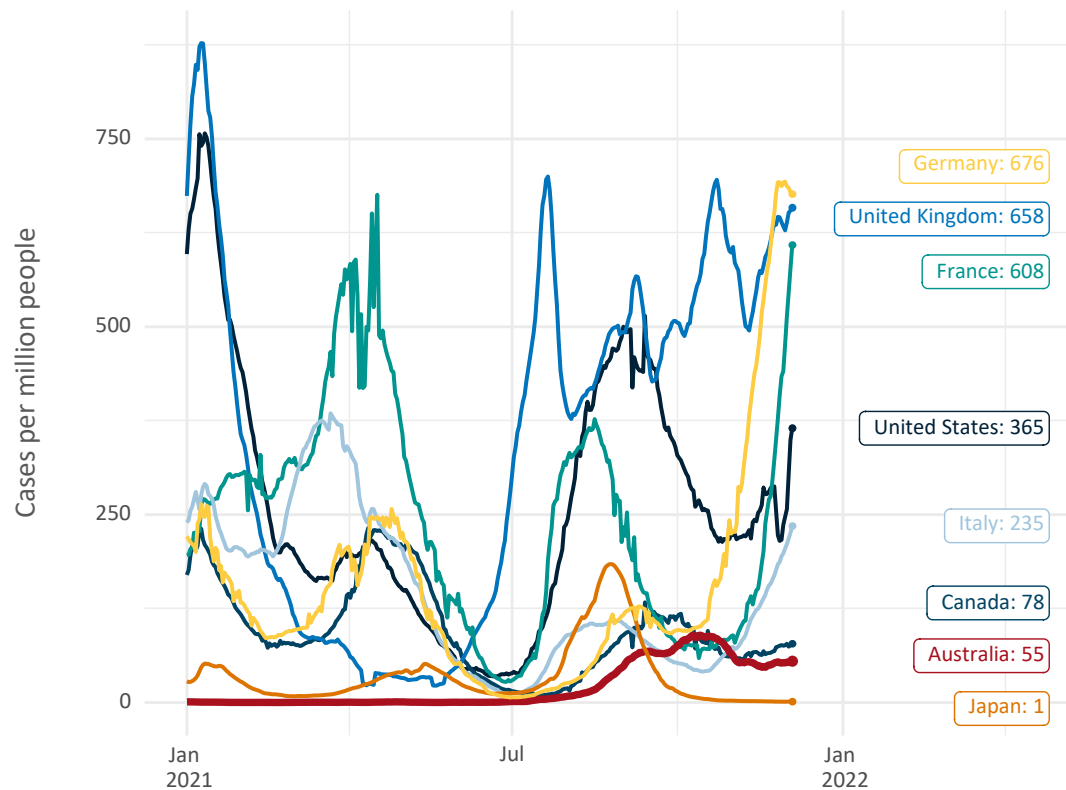


Note: From 15 September 2021, data for Australia includes all doses administered to people 12 and over. Prior to 15 September, data was for 16 and over  
Source: Department of Health (Australia), Our World in Data (international)  
Latest data: 05 December

# International data – COVID-19

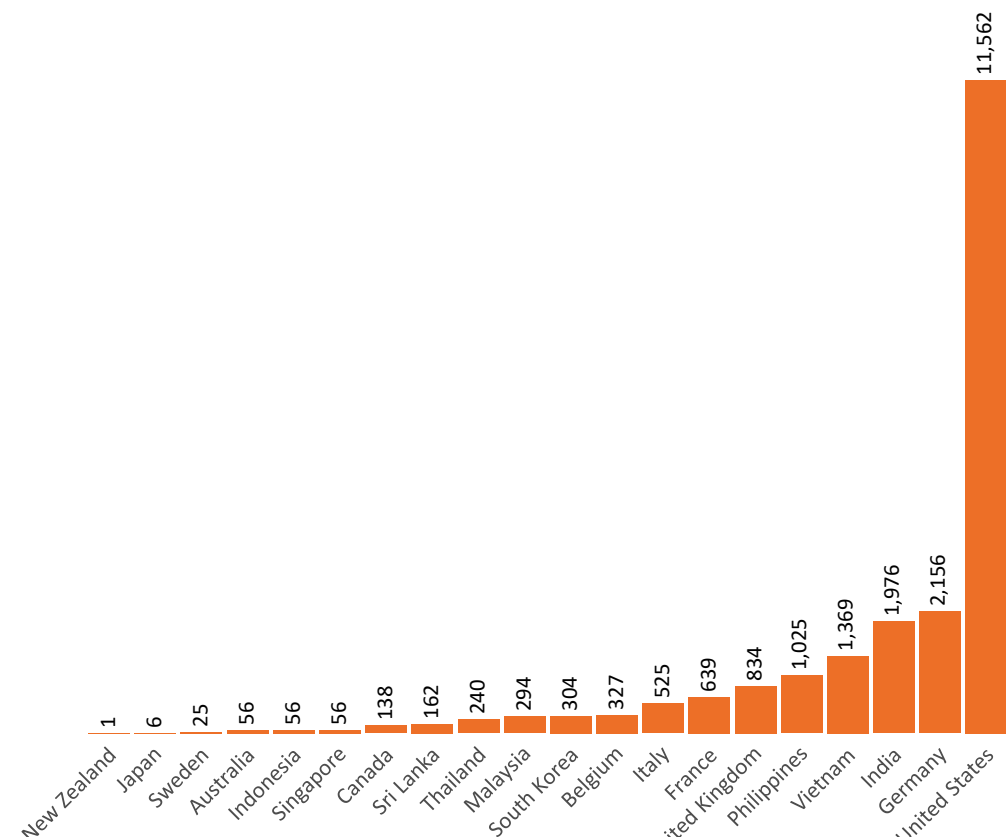
Data as at:  
05 Dec 2021

New daily cases per million in 2021, Australia and G7 countries  
Smoothed - 7 day average



Source: OWID  
Data downloaded: 06 Dec 2021 07:58  
Latest data: 04 Dec 2021

COVID-19 deaths in past 7 days - Australia and select countries



Source: OWID  
Data downloaded: 06 Dec 2021 07:58  
Latest data: 04 Dec 2021

# Pandemic Response Payments

Australia's COVID-19  
Vaccine Roadmap

Data as at midnight:  
5 Dec 2021



<b>COVID Disaster Payment:</b>	5.89 million claims received - 2.19 million individuals paid a total of \$12.59 billion.
<b>\$200 Income Support Payment:</b>	352,000 claims received - 183,000 individuals paid a total of \$268.85 million.
<b>Pandemic Leave Disaster Payment:</b>	144,000 claims received - 123,000 individuals paid a total of \$202.51 million.



## COVID Disaster Payment

assisting during a lockdown  
event in a Commonwealth  
hotspot.

## Income Support Payment \$200

for income support  
recipients who lost at  
least 8 hours of work.

## Pandemic Leave Disaster Payment

for those who have to  
self-isolate, quarantine  
or care.

For more information visit:  
[servicesaustralia.gov.au](https://servicesaustralia.gov.au)

## COVID-19 DISASTER PAYMENTS

### Victoria

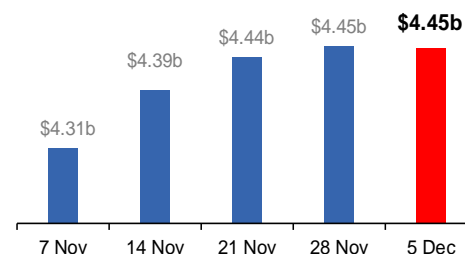
Lockdown (#6) since 6 Aug to 28 Oct  
Claiming period ends 9 Dec

**745,000 people have received at least  
one COVID Disaster Payment.**

**\$4.45b paid out as at 5 Dec 2021.**

**\$2m paid in initial and reoccurring  
payments in the week ending  
5 Dec 2021.**

Cumulative payments made by State since  
activation on 8 Jun 2021.



### Northern Territory

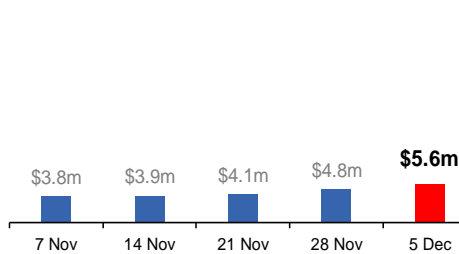
Lockdown (#3) from 16 Nov to 22 Nov  
Claiming period ends 27 Dec

**7,000 people have received at least one  
COVID Disaster Payment.**

**\$5.6m paid out as at 5 Dec 2021.**

**\$805,000 paid in initial payments in the  
week ending 5 Dec 2021.**

Cumulative payments made by State since  
activation on 25 Aug 2021.



### New South Wales

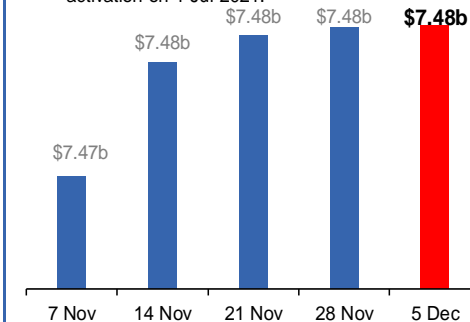
Lockdown from 24 Jun to 10 Oct  
Claiming period ended 27 Nov

**1.08m people have received at least  
one COVID Disaster Payment.**

**\$7.48b paid out as at 5 Dec 2021.**

**\$163,000 paid in initial and reoccurring  
payments in the week ending  
5 Dec 2021.**

Cumulative payments made by State since  
activation on 1 Jul 2021.



### Australian Capital Territory

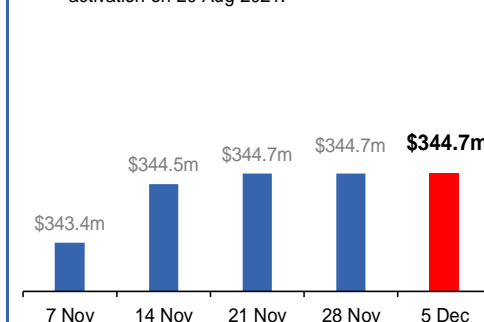
Lockdown since 12 Aug to 14 Oct  
Claiming period ended 25 Nov

**65,000 people have received at least  
one COVID Disaster Payment.**

**\$344.7m paid out as at 5 Dec 2021.**

**\$8,000 paid in initial and reoccurring  
payments in the week ending  
5 Dec 2021.**

Cumulative payments made by State since  
activation on 20 Aug 2021.



Data as at midnight:  
5 Dec 2021

# Pandemic Response Payments (continued)

## COVID-19 DISASTER PAYMENTS


### Tasmania

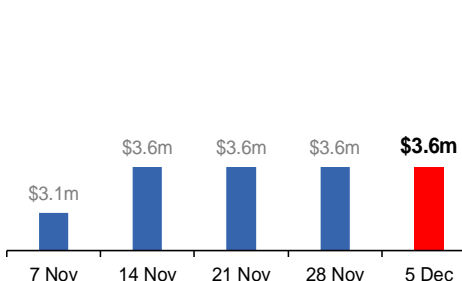
Lockdown from 15 Oct to 18 Oct  
Claiming period ended 12 Nov

**6,900 people have received at least one COVID Disaster Payment.**

**\$3.6m paid out as at 5 Dec 2021.**

**\$2,000 paid in initial payments in the week ending 5 Dec 2021.**

 Cumulative payments made by State since activation on 22 Oct 2021.




### Queensland

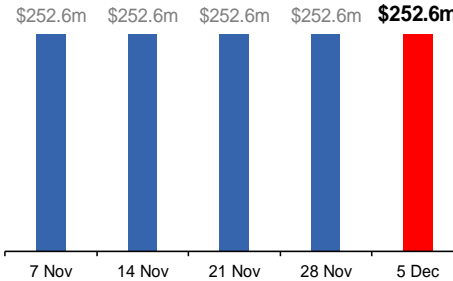
Lockdown from 31 Jul to 11 Aug  
Claiming period ended 28 Aug

**196,000 people have received at least one COVID Disaster Payment.**

**\$252.6m paid out as at 5 Dec 2021.**

**\$9,000 paid in initial and reoccurring payments in the week ending 5 Dec 2021.**

 Cumulative payments made by State since activation on 7 Aug 2021.




### South Australia

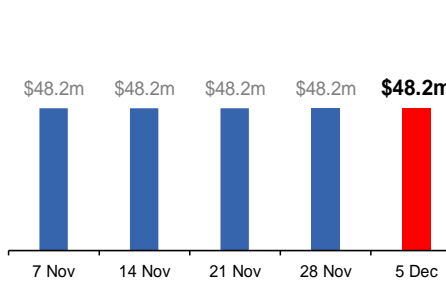
Lockdown from 21 to 27 Jul  
Claiming period ended 17 Aug

**86,000 people have received at least one COVID Disaster Payment.**

**\$48.2m paid out as at 5 Dec 2021.**

**\$1,200 paid in initial and reoccurring payments in the week ending 5 Dec 2021.**

 Cumulative payments made by State since activation on 28 Jul 2021.



# Administration and Utilisation

## Doses as at Week 41

	Ordered	Available	Administered	Available minus Administered	Estimated Dose Utilisation %
	Up to Week 41	Delivered up to Week 40 including redistributions	Up to Week 41		(see note)
NSW	4,943,760	4,761,410	4,224,508	536,902	99%
VIC	5,767,154	5,767,154	4,778,285	988,869	93%
QLD	3,557,200	3,458,210	2,965,516	492,694	96%
WA	1,844,848	1,840,438	1,686,543	153,895	Fully utilised
SA	1,617,890	1,588,790	1,234,657	354,133	88%
TAS	499,180	493,330	464,587	28,743	Fully utilised
NT	324,324	295,516	229,400	66,116	88%
ACT	502,856	502,856	489,377	13,479	Fully utilised
Jurisdiction delivered total	19,057,212	18,707,704	16,072,873	2,634,831	96%
Commonwealth Aged Care & Disability	1,150,366	1,141,252	1,135,851	5,401	N/A
Commonwealth Primary Care & Other	30,232,316	29,708,418	22,455,247	7,253,171	86%
Total	50,439,894	49,557,374	39,663,971	9,893,403	90%

### About this data

- Ordered – Total doses delivered to sites. Based on logistics provider data. This figure includes doses allocated for administration in the coming week.
- Available – total doses that could have been administered to date, less doses re-distributed from States & Territories to Primary Care or Aged Care & Disability (i.e. does not include those deliveries recently received, and intended for use in the coming week).
- Administered – Doses administered as at 05 December 2021.
- The dose utilisation is calculated based on the total doses administered and a small % wastage in line with international standards in relation to total available doses.
- For Aged Care & Disability, the doses available for administration is for the full period (Weeks 1-41).
- Aged Care & Disability utilisation is not provided as the in-reach rollout is demand-based, with vaccines ordered based on resident numbers.