



Australian Government
Operation COVID Shield

COVID-19 Vaccine Roll-out

05 December 2021

Data as at:
04 Dec 2021

Total vaccine doses



39,633,360 total vaccine
doses administered nationally as at 04 December
+49,012 recorded in the last 24 hours



19,145,592

people have had at least one
dose

92.8%

of people over the age of 16
have had at least one dose



18,147,462

people are fully vaccinated

88.0%

of people over the age of 16 are
fully vaccinated



531,846

people over the age of 16
who have received more
than two doses

NSW
12,998,858
(+5,451 daily
increase)

VIC
10,747,953
(+7,151 daily
increase)

QLD
7,341,520
(+18,871 daily
increase)

WA
3,708,138
(+9,322 daily
increase)

TAS
857,465
(+789 daily
increase)

SA
2,623,996
(+5,981 daily
increase)

ACT
966,627
(+872 daily
increase)

NT
388,803
(+575 daily
increase)

*Administration state breakdown indicates state in which a vaccine was administered

**Overall dose count includes instances of more than two doses per person in a small number of cases.

Source: Australian Immunisation Register

Data as at:
04 Dec 2021

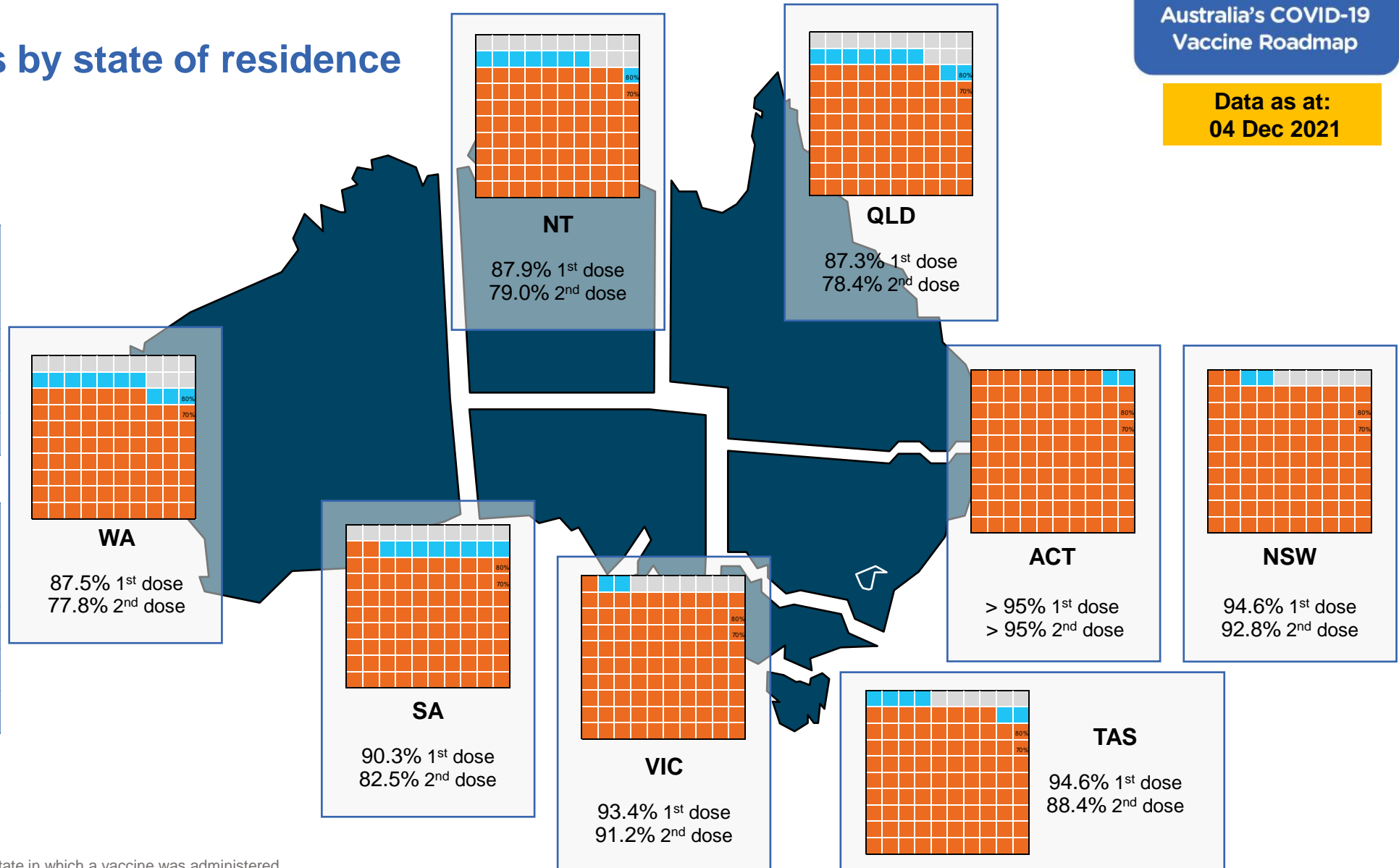
Vaccinations by state of residence

First doses

Age	Today	4 weeks ago	8 weeks ago
16+	92.8%	89.6%	83.0%
50+	>95%	>95%	92.5%
70+	>95%	>95%	>95%

Fully vaccinated

Age	Today	4 weeks ago	8 weeks ago
16+	88.0%	80.9%	63.0%
50+	94.5%	89.0%	77.4%
70+	>95%	93.4%	84.0%



*Residential state may differ from the state in which a vaccine was administered

Commonwealth and Jurisdiction vaccine doses administered

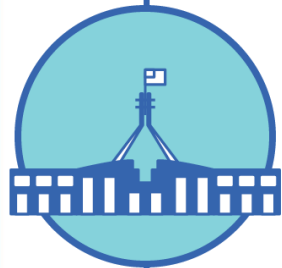
Data as at:
04 Dec 2021



39,633,360 total vaccine
doses administered nationally as at 04 December
+ 49,012 recorded in the last 24 hours



16,052,524
doses administered by state
and territory facilities
+ 23,337
recorded in the last 24 hours



23,580,836
doses administered by
commonwealth facilities
+ 25,675
recorded in the last 24 hours
22,445,703 total vaccine doses
administered in primary care settings
1,135,133 total vaccine doses
administered in aged care and disability
settings

NSW	Jurisdictions	Commonwealth
Cumulative	4,223,978	8,774,880
Daily increase	1,555	3,896

VIC	Jurisdictions	Commonwealth
Cumulative	4,776,643	5,971,310
Daily increase	2,853	4,298

QLD	Jurisdictions	Commonwealth
Cumulative	2,954,195	4,387,325
Daily increase	10,979	7,892

WA	Jurisdictions	Commonwealth
Cumulative	1,683,894	2,024,244
Daily increase	3,574	5,748

TAS	Jurisdictions	Commonwealth
Cumulative	463,457	394,008
Daily increase	1	788

SA	Jurisdictions	Commonwealth
Cumulative	1,232,126	1,391,870
Daily increase	3,349	2,632

ACT	Jurisdictions	Commonwealth
Cumulative	488,974	477,653
Daily increase	589	283

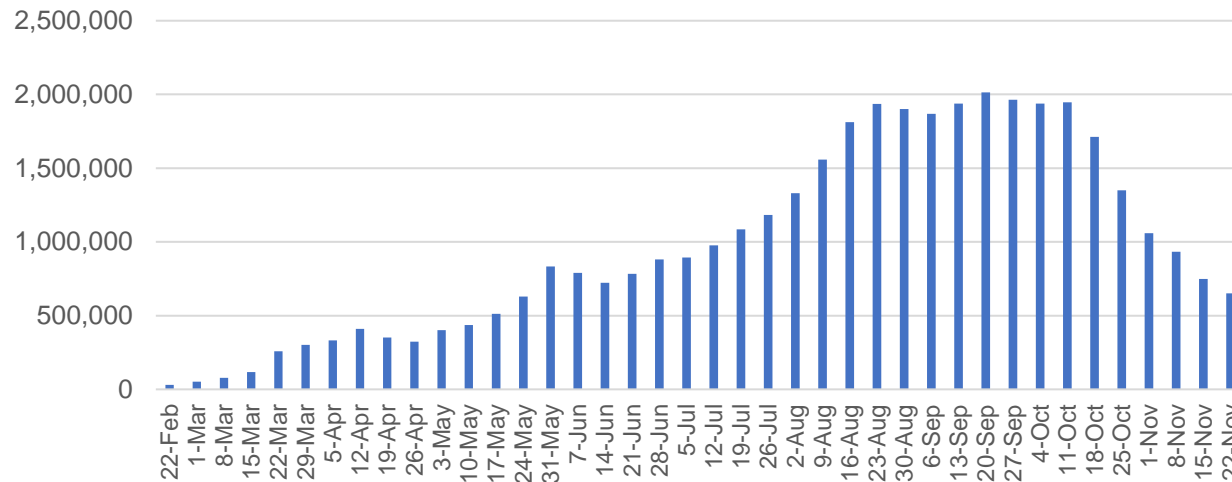
NT	Jurisdictions	Commonwealth
Cumulative	229,257	159,546
Daily increase	437	138

Vaccine milestone charts

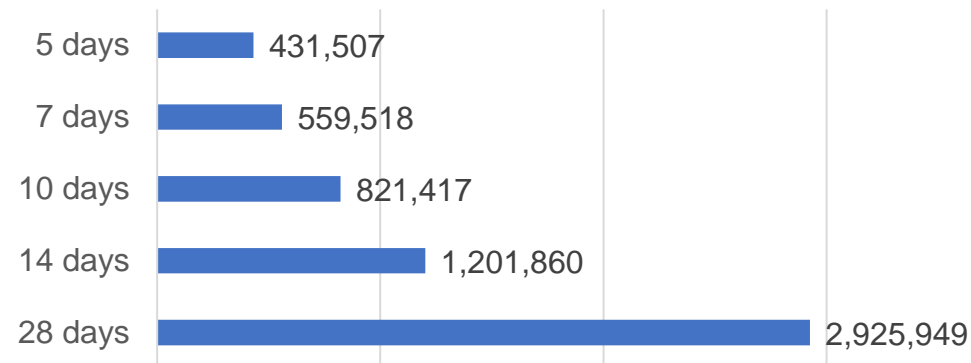
Data as at:
04 Dec 2021

Australia's COVID-19
Vaccine Roadmap

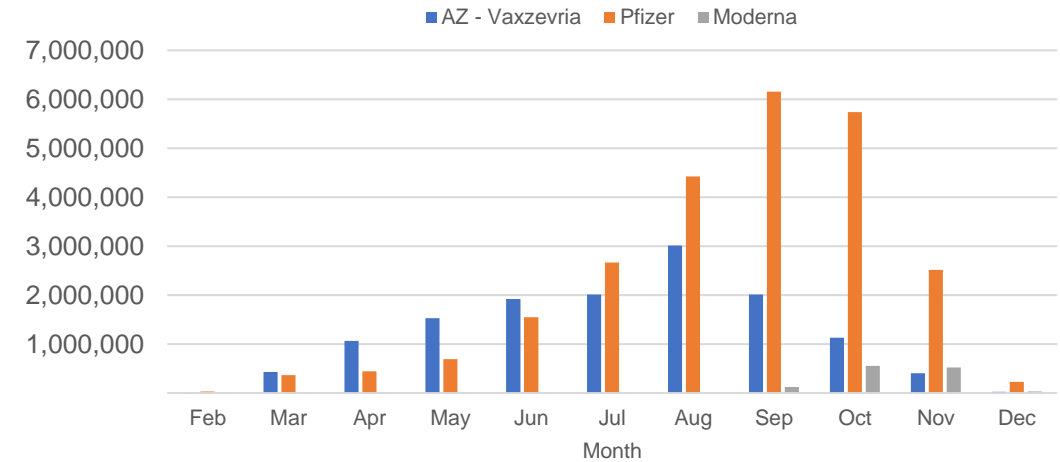
Doses Administered by Week



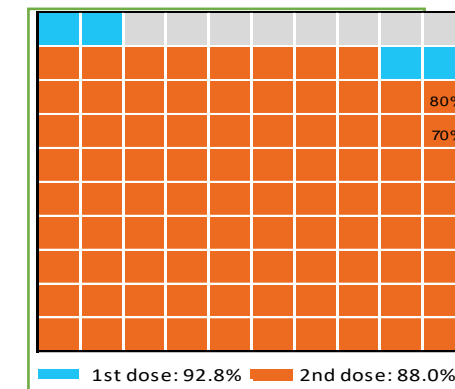
Doses Reported



Doses by administration month and vaccine type



Eligible population percentage coverage



*Sourced from the Australian Immunisation Register.

*Each square represents 1% of the national population. Squares are filled as milestones are achieved.

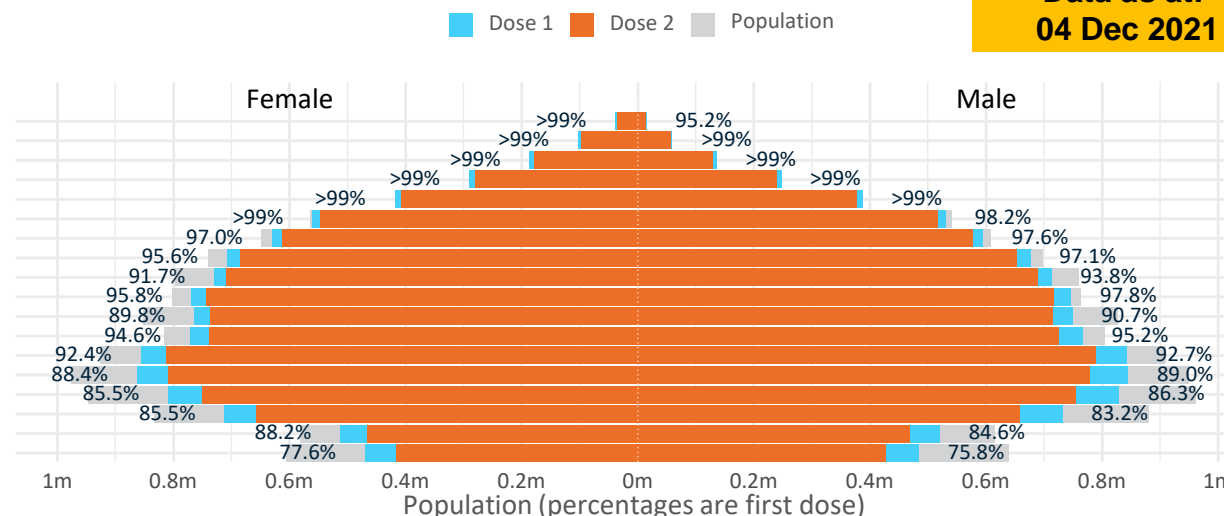
Doses by age and sex

First and second doses by age and sex

Australia's COVID-19
Vaccine Roadmap

Data as at:
04 Dec 2021

Age	Dose 1	Dose 2
95+	52,874 (>99%)	48,496 (91.7%)
90-94	162,267 (>99%)	152,896 (96.5%)
85-89	322,021 (>99%)	307,834 (97.4%)
80-84	537,388 (>99%)	519,919 (98.4%)
75-79	805,902 (>99%)	784,545 (>99%)
70-74	1,092,205 (98.8%)	1,064,030 (96.3%)
65-69	1,225,811 (97.4%)	1,190,015 (94.6%)
60-64	1,385,281 (96.4%)	1,339,161 (93.2%)
55-59	1,443,283 (92.8%)	1,398,889 (89.9%)
50-54	1,516,020 (96.9%)	1,461,505 (93.4%)
45-49	1,514,194 (90.3%)	1,450,935 (86.5%)
40-44	1,540,456 (95.1%)	1,465,522 (90.5%)
35-39	1,703,018 (92.8%)	1,603,722 (87.4%)
30-34	1,714,483 (89.1%)	1,593,426 (82.8%)
25-29	1,648,051 (86.4%)	1,512,791 (79.3%)
20-24	1,449,586 (84.7%)	1,319,358 (77.1%)
16-19	1,032,752 (86.4%)	934,418 (78.1%)
12-15	953,900 (76.7%)	842,996 (67.8%)



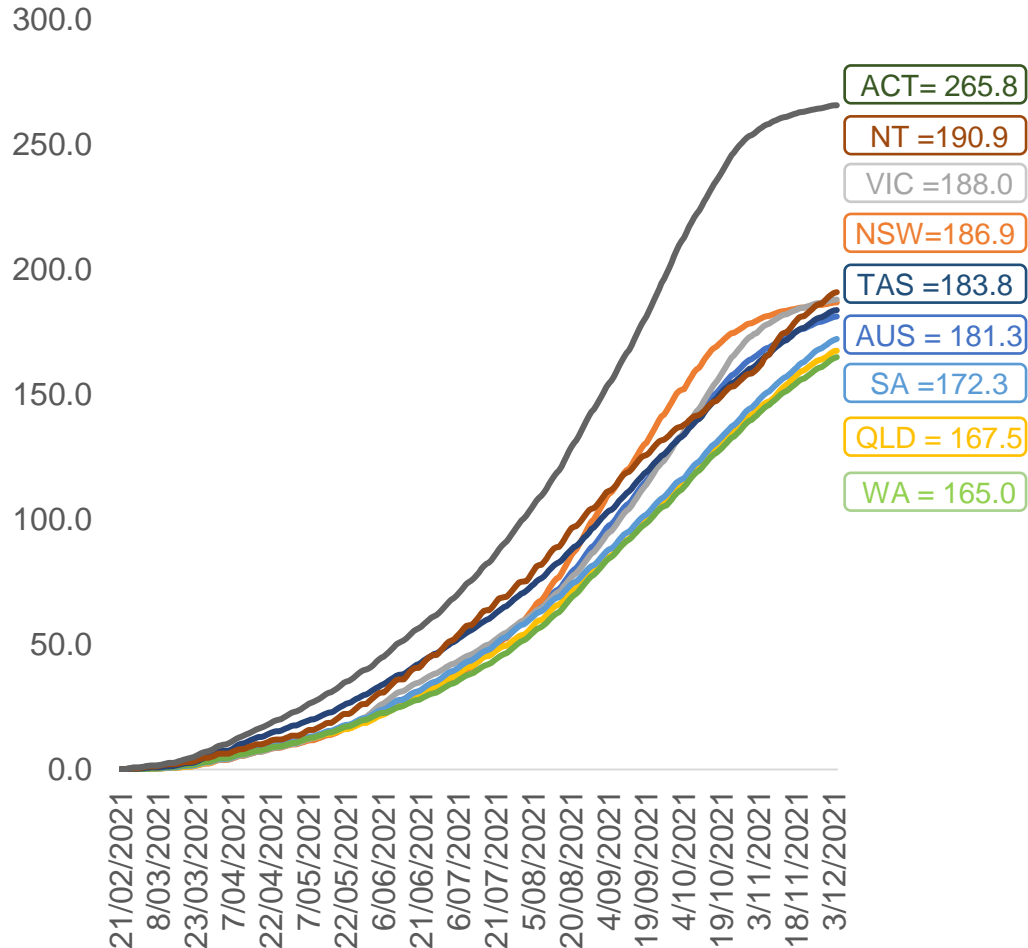
	AUS	ACT	NSW	NT	QLD	SA	TAS	VIC	WA
16 and over - dose 1	19,145,592	345,920	6,214,311	167,494	3,590,299	1,299,995	416,224	5,052,394	1,850,700
16 and over - dose 2	18,147,462	339,490	6,094,118	150,467	3,226,217	1,188,902	389,327	4,933,961	1,646,054
16 and over - population	20,619,959*	344,037	6,565,651	190,571	4,112,707	1,440,400	440,172	5,407,574	2,114,978
16 and over % with dose 1	92.85%	>99%	94.65%	87.89%	87.30%	90.25%	94.56%	93.43%	87.50%
16 and over % with dose 2	88.01%	98.68%	92.82%	78.96%	78.45%	82.54%	88.45%	91.24%	77.83%
50 and over - dose 1	8,543,052	133,854	2,770,031	56,140	1,659,081	645,157	212,589	2,171,685	836,871
50 and over - dose 2	8,267,290	131,896	2,728,967	52,840	1,573,758	610,702	203,293	2,129,647	785,220
50 and over - population	8,749,703	127,802	2,807,793	62,280	1,758,855	674,384	220,036	2,211,211	885,370
50 and over % with dose 1	97.64%	>99%	98.66%	90.14%	94.33%	95.67%	96.62%	98.21%	94.52%
50 and over % with dose 2	94.49%	>99%	97.19%	84.84%	89.48%	90.56%	92.39%	96.31%	88.69%
70 and over - dose 1	2,972,657	43,663	978,975	11,509	571,433	241,211	78,079	749,052	276,790
70 and over - dose 2	2,877,720	42,843	960,795	10,885	547,027	228,984	74,454	731,209	262,150
70 and over - population	2,934,706	39,946	962,606	12,343	577,767	240,514	77,155	743,519	280,281
70 and over % with dose 1	>99%	>99%	>99%	93.24%	98.90%	>99%	>99%	>99%	98.75%
70 and over % with dose 2	98.06%	>99%	>99%	88.19%	94.68%	95.21%	96.50%	98.34%	93.53%
12 to 15 - dose 1	953,900	19,712	317,690	9,577	175,862	57,763	19,469	269,101	77,241
12 to 15 - dose 2	842,996	18,930	301,425	7,491	141,934	45,129	16,289	247,063	58,990
12 to 15 - population	1,243,990	19,693	390,330	13,060	270,146	82,747	26,308	308,611	132,869
12 to 15 % with dose 1	76.68%	>99%	81.39%	73.33%	65.10%	69.81%	74.00%	87.20%	58.13%
12 to 15 % with dose 2	67.77%	96.13%	77.22%	57.36%	52.54%	54.54%	61.92%	80.06%	44.40%

*National population will not equal sum of listed jurisdictions due to a small number of people counted in national population residing in some 'other' territories. Sum of state doses will not add to national total as some records are unable to be geocoded to a State or Territory.

Doses sourced from Australian Immunisation Register, population from ABS ERP June 2020

Vaccinations by location

Cumulative total doses administered vs eligible state populations*

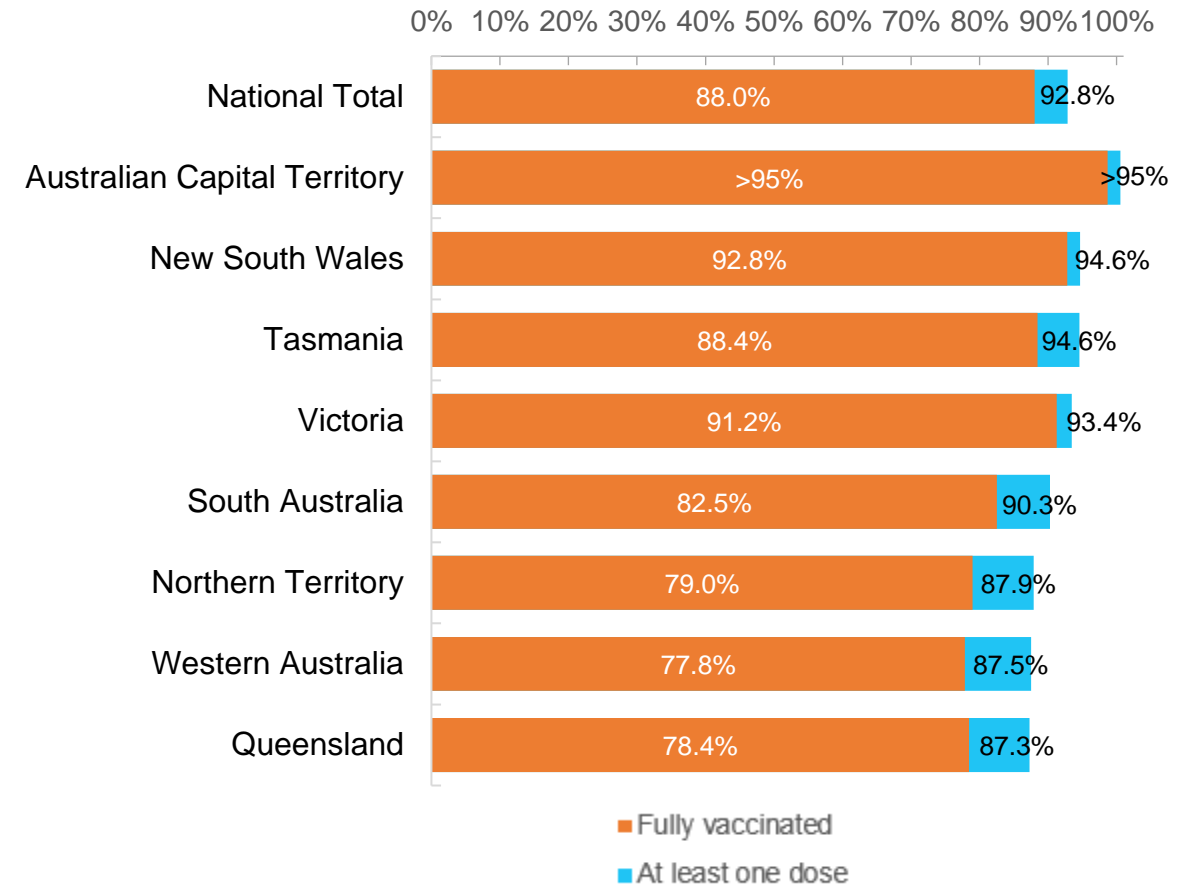


*Not an indication of percentage vaccinated, numbers will exceed 100 due to multiple doses required per person of the population. All doses are included, including those for the 12-15 cohort, and are based on vaccination provider location.

Data as at:
04 Dec 2021

Australia's COVID-19
Vaccine Roadmap

First and Second Doses by state of residence



Aboriginal and Torres Strait Islander peoples

Number of people vaccinated

Data as at:
30 Nov 2021
Updated weekly

Australia's COVID-19
Vaccine Roadmap



391,929

people over the age of 16
have had at least one dose

73.9%

of people over the age of 16
have had at least one dose



331,966

people over the age of 16
are fully vaccinated

62.4%

of people over the age of 16 are
fully vaccinated



**39,188
(54.7%)**

people aged 12-15 years
have had at least one dose

173 Aboriginal community controlled health services (ACCHS)

0#	50	27	41	12	3	21	19
ACT	NSW	NT	QLD	SA	TAS	VIC	WA

Medicare Address State ^{##}	Individuals Dose 1	Individuals Dose 1 %	Individuals Dose 2	Individuals Dose 2 %
Australian Capital Territory	4,913	90.0%	4,691	85.8%
New South Wales	136,813	85.3%	130,695	81.4%
Northern Territory	36,749	79.8%	28,194	60.9%
Queensland	96,092	66.7%	73,689	51.1%
South Australia	17,403	67.8%	13,804	53.5%
Tasmania	13,704	79.4%	12,364	71.4%
Victoria	35,451	87.5%	33,389	82.3%
Western Australia	36,959	57.5%	25,432	39.4%
Unknown/Other Territories	13,845	51.3%	9,708	35.8%
Totals	391,929	73.9%	331,966	62.4%

Source: Australian Immunisation Register

*Identifying as Aboriginal and Torres Strait Islander is optional and the estimated population may be under reported.

**Includes all Aboriginal and Torres Strait Islander peoples who have received a vaccination, not limited to those administered in an ACCHS setting

#ACCHS in the ACT are currently operating as a Commonwealth Vaccine Clinics so not included to avoid double counting

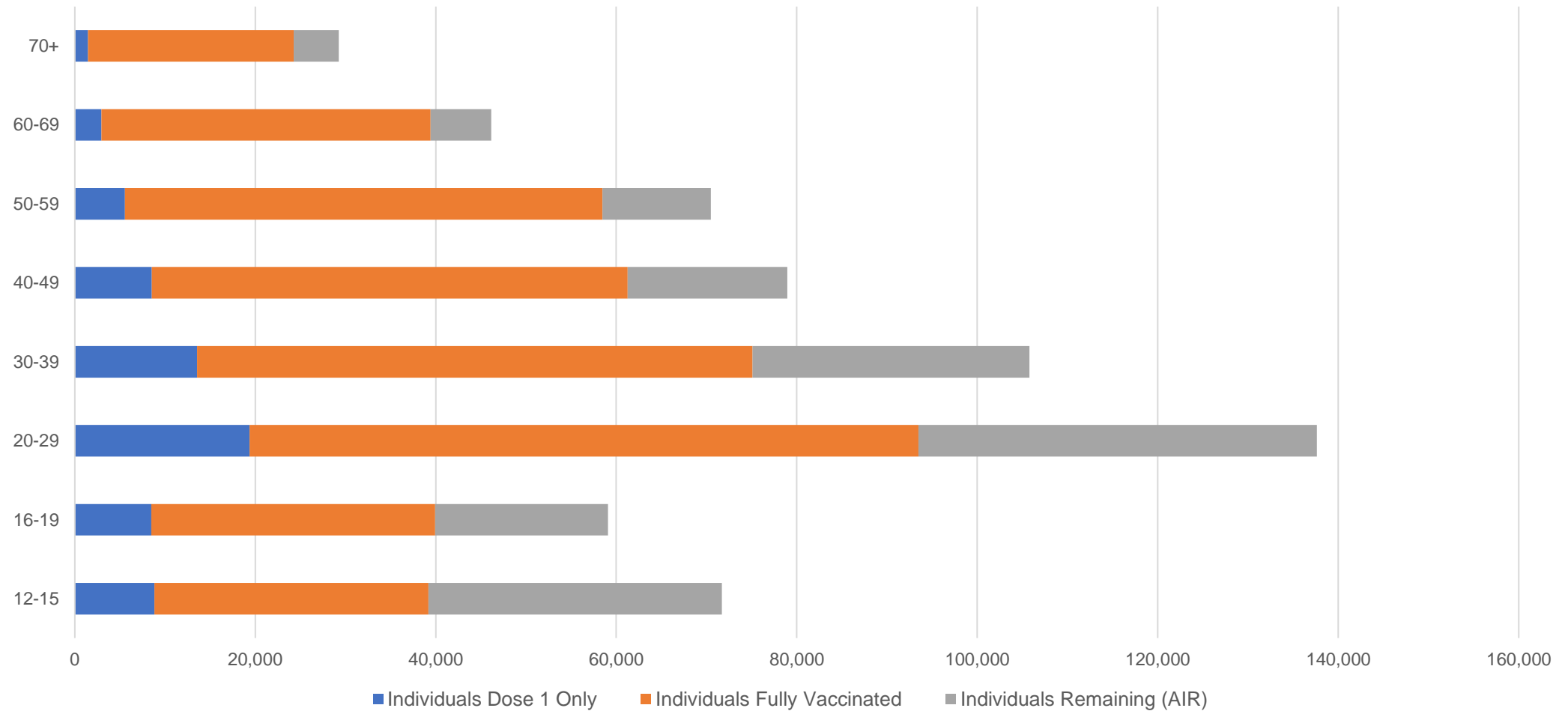
##The above table includes all identified Aboriginal and Torres Strait Islander people who are aged 16 and above by their state of residence.

Aboriginal and Torres Strait Islander peoples

Number of people vaccinated by age

Data as at:
30 Nov 2021
Updated weekly

Australia's COVID-19
Vaccine Roadmap



Source: Australian Immunisation Register

Data as at:
04 Dec 2021

Commonwealth primary care



Primary care vaccine administration sites

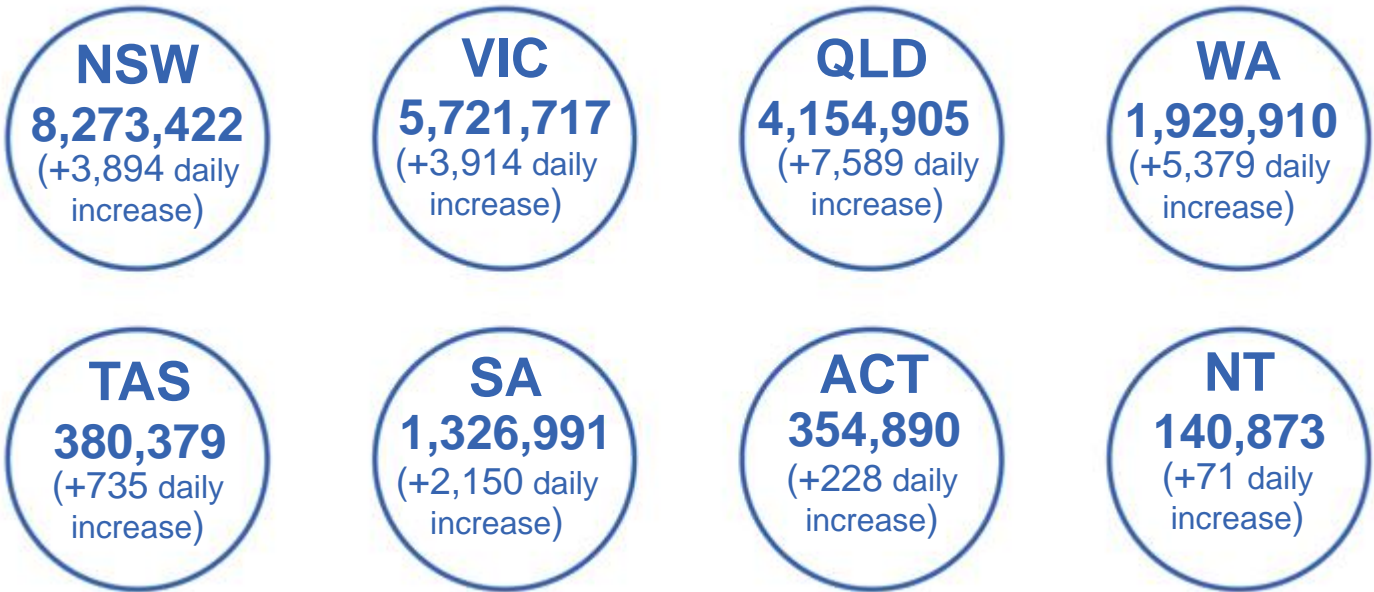
5,654	137	173	3,457
GPs	CVCs	ACCHS	Pharmacies



22,445,703 total vaccine doses administered
primary care settings as at 04 December
+ 23,898 recorded in the last 24 hours

Primary care vaccinations by provider type

	Doses administered	Daily increase	7 day increase
General Practice* includes other Commonwealth	20,026,151	16,386	246,260
Pharmacy	2,419,552	7,512	106,884



162,616 doses administered to persons residing in other territories or with missing residential information

*General practice includes Commonwealth Vaccination Clinics, Aboriginal Community Health Centres, Royal Flying Doctor Service and other Commonwealth vaccination facilities

Source: Australian Immunisation Register

Data as at:
04 Dec 2021

Commonwealth aged care and disability doses administered



1,135,133 (+ 1,777 last 24 hours)

Total vaccine doses administered in aged care and disability facilities as at 04 December

Number of doses administered as part of the Commonwealth aged and disability care rollout

NSW
527,136
(+170 daily increase)

VIC
210,731
(+516 daily increase)

QLD
174,132
(+200 daily increase)

WA
81,210
(+242 daily increase)

TAS
19,933
(+52 daily increase)

SA
73,185
(+482 daily increase)

ACT
14,768
(+5 daily increase)

NT
6,477
(+90 daily increase)

27,561

doses administered to persons
residing in other territories or with
missing residential information

*Sourced from the Australian Immunisation Register. Includes all persons vaccinated at participating residential aged care, disability and related industry settings.

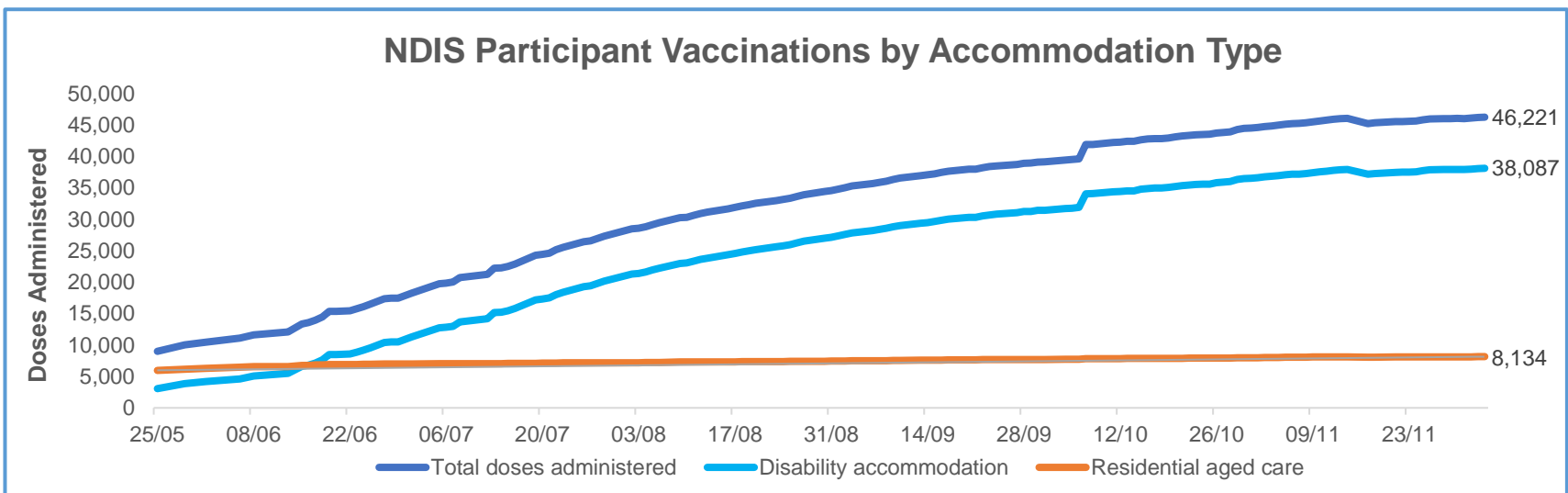
**State level breakdown indicates the residential location and may not align to the state in which the vaccination occurred.

Source: Australian Immunisation Register

Data as at:
04 Dec 2021*

Vaccination rate of people with disability and the disability workforce

Phase 1a – People with disability living in shared accommodation



	Total people with at least one dose	People fully vaccinated	Total number of individuals in cohort	Total doses administered	% People with at least one dose	% People fully vaccinated
NDIS participants living in shared accommodation **	23,588	22,633	27,603	46,221	85.5%	82.0%
NDIS screened workers ***	220,892	209,953	251,862	430,845	87.7%	83.4%



* Updates are available Monday to Friday on participants, and bi-weekly for workers, numbers may be up to four days old.

** Shared accommodation means two or more people with disability living in shared residential accommodation and NDIS participants living in Residential Aged Care accommodation as per the eligibility criteria of Phase 1a. The number of residents changes over time and refinement of methodology can lead to corrections in totals.

*** Total number of workers within the NDIS Commission Worker Screening database who have ever been successfully screened and linked to an NDIS registered provider or participant.

Source: Linkage between National Disability Insurance Agency data, NDIS Quality and Safeguards Commission data and the Australian Immunisation Register.

Residential aged care vaccination rollout

Residential aged care facilities status

100% Commonwealth facilities visited (2,565 planned sites)

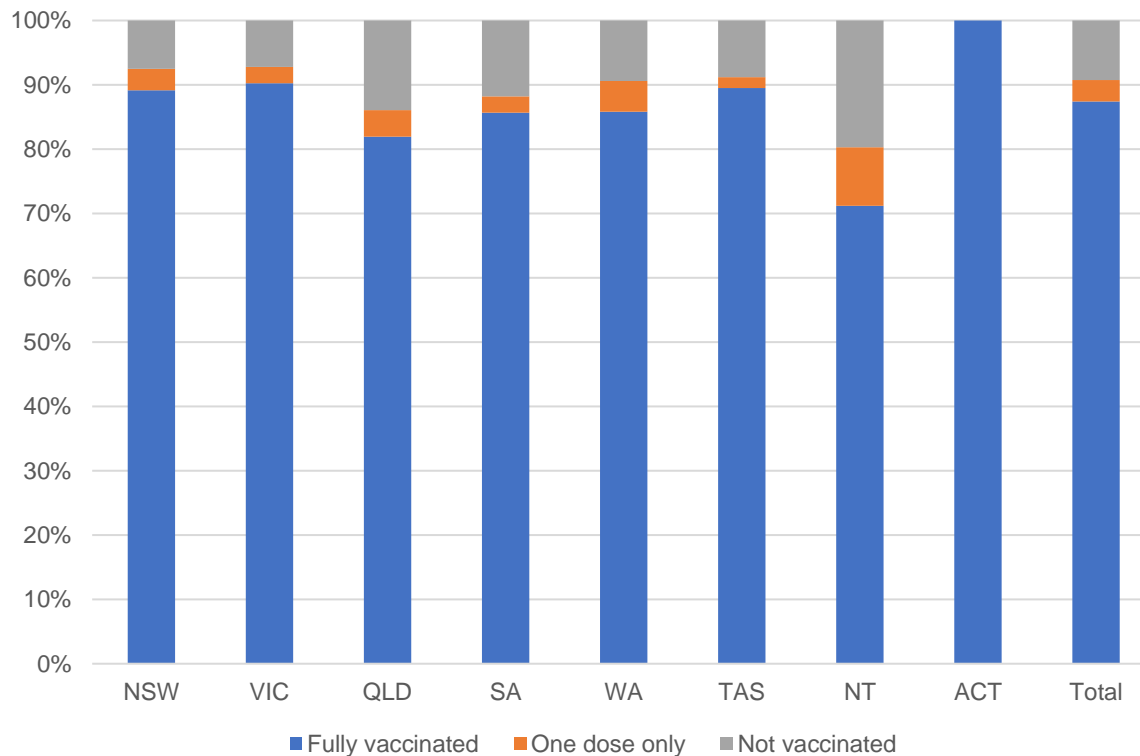
162,211 People fully vaccinated

168,409 People with at least one dose

Australia's COVID-19 Vaccine Roadmap

Data as at:
02 Dec 2021

Aged care resident vaccinations



Aged care worker vaccinations

Jurisdictions	Total workers with at least one dose	Workers fully vaccinated	% Workers with at least one dose	% Workers fully vaccinated
NSW	79,208	79,133	99.7%	99.6%
VIC	71,212	71,126	99.8%	99.7%
QLD	49,126	48,894	100.0%	99.5%
SA	27,624	27,179	99.9%	98.3%
WA	23,702	23,537	100.0%	99.3%
TAS	7,674	7,491	99.8%	97.4%
NT	855	850	100.0%	99.4%
ACT	2,997	2,996	100.0%	100.0%
Total	262,398	261,206	99.9%	99.4%

Source: My Aged Care Portal staff vaccination progress

**Resident vaccination information is reported manually by service providers

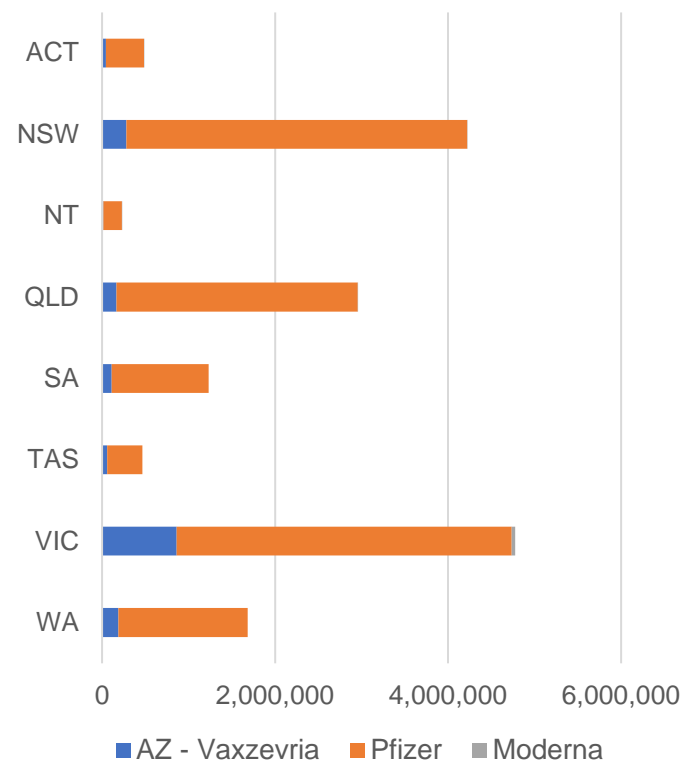
*Status updates are provided by facilities at least once per week. Reporting is updated Monday to Friday to encompass different facility updates being made on different days.

Data is sourced directly from Aged Care Service Providers and is not drawn or closely aligned with data from AIR due to inconsistencies and potential lags in uploading of records.

Data as at:
04 Dec 2021

Jurisdiction administered

Total vaccine doses administered in State and Territory clinics as at 04 December



16,052,524 total vaccine doses administered
in State and Territory clinics as at 04 December
+ **23,337** recorded in the last 24 hours
+ **184,587** recorded in the last 7 days

NSW
4,223,978
(+1,555 daily
increase)

VIC
4,776,643
(+2,853 daily
increase)

QLD
2,954,195
(+10,979 daily
increase)

WA
1,683,894
(+3,574 daily
increase)

TAS
463,457
(+1 daily
increase)

SA
1,232,126
(+3,349 daily
increase)

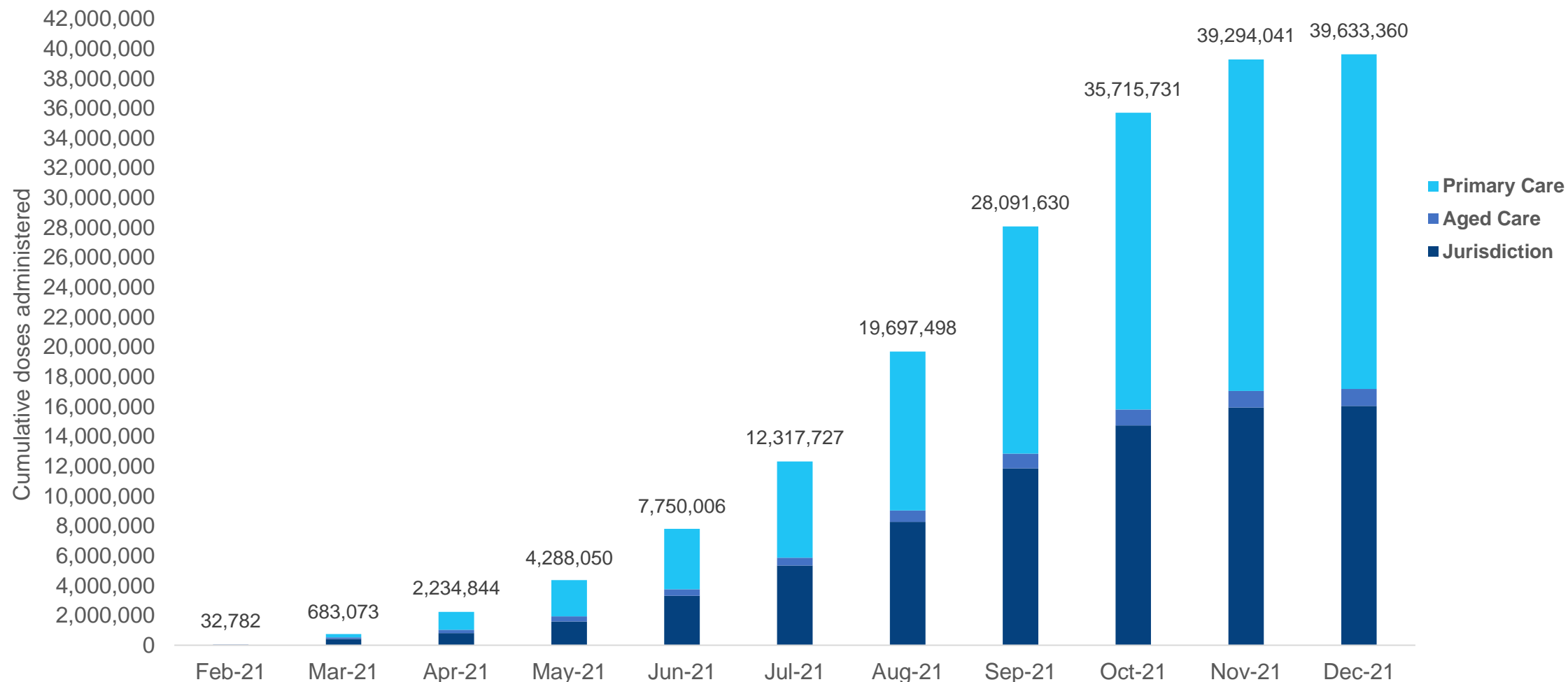
ACT
488,974
(+589 daily
increase)

NT
229,257
(+437 daily
increase)

*Sourced from the Australian Immunisation Register and self-reported data. Numbers are calculated as difference in daily cumulative reported numbers to allow for historical corrections in all self-reported data sources.

Cumulative doses administered by channel

Data as at:
04 Dec 2021



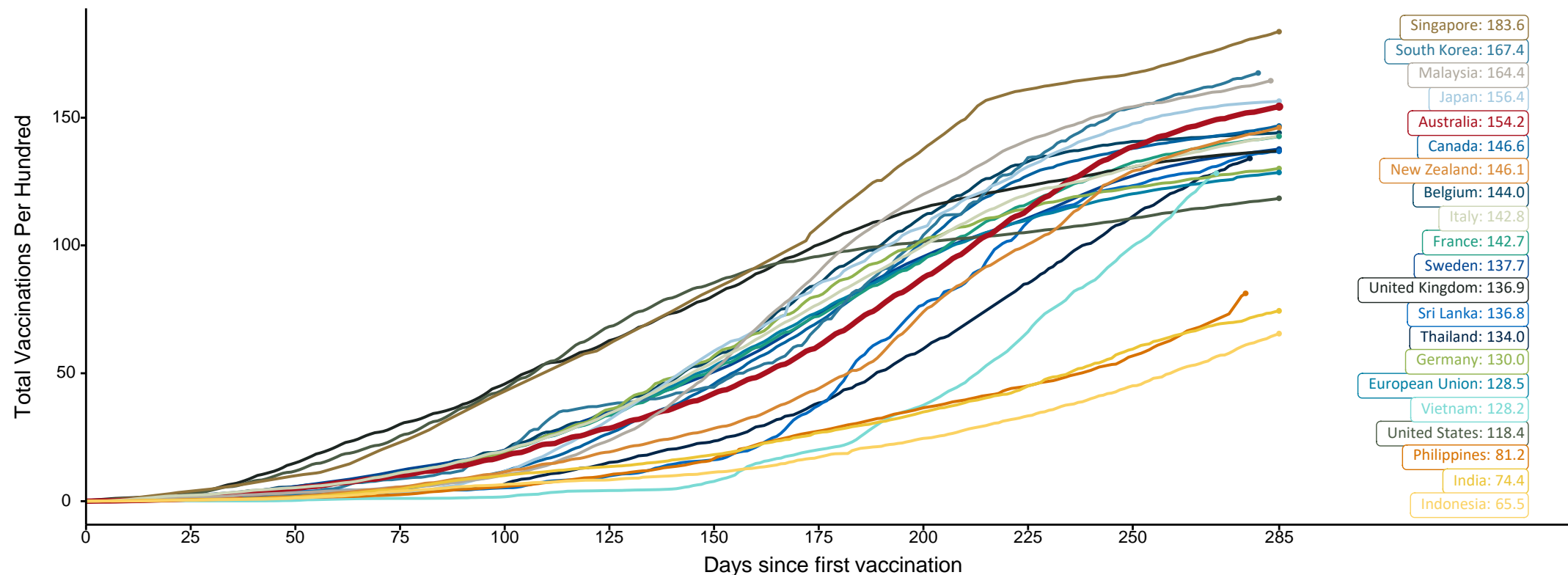
Source: Australian Immunisation Register

Doses at equivalent stages of rollout (Day 285)

Data as at:
04 Dec 2021

The x-axis is truncated at the length of Australia's vaccination program. Countries with intermittent reporting have had their doses per 100 imputed to Australia's current stage of rollout. Israel excluded as it is beyond scale of the graph

Cumulative doses administered (04 Dec): **39,633,360**

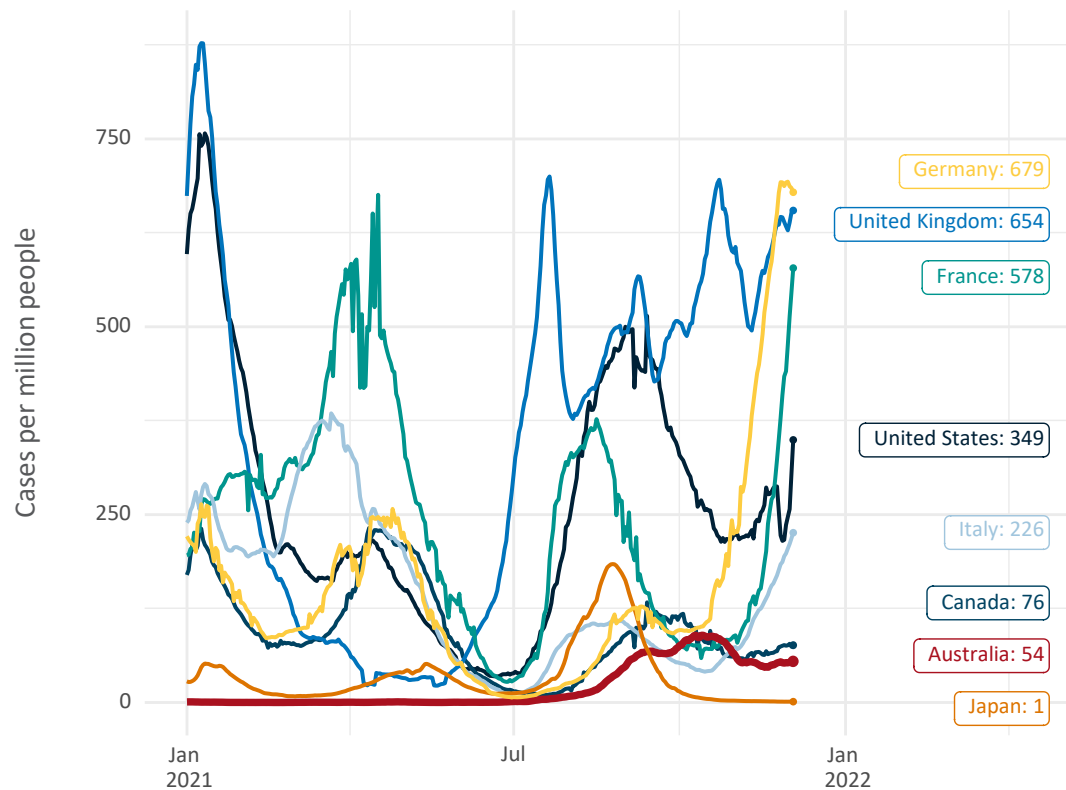


Note: From 15 September 2021, data for Australia includes all doses administered to people 12 and over. Prior to 15 September, data was for 16 and over
Source: Department of Health (Australia), Our World in Data (international)
Latest data: 04 December

International data – COVID-19

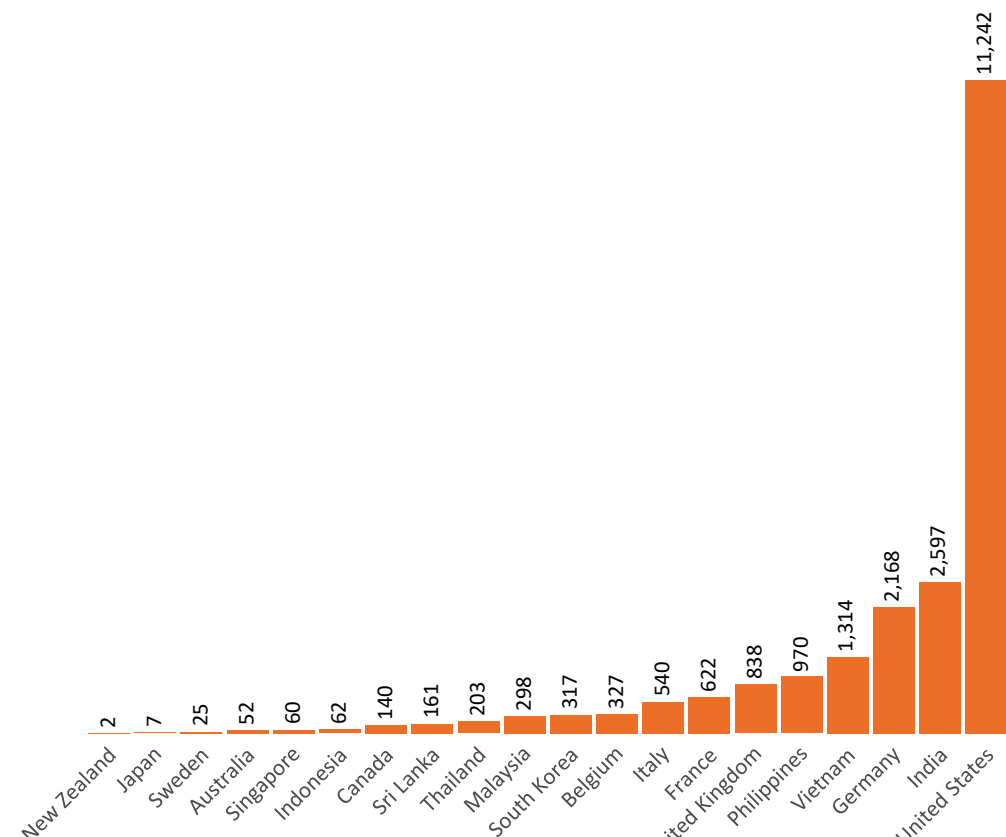
Data as at:
04 Dec 2021

New daily cases per million in 2021, Australia and G7 countries
Smoothed - 7 day average



Source: OWID
Data downloaded: 05 Dec 2021 08:32
Latest data: 03 Dec 2021

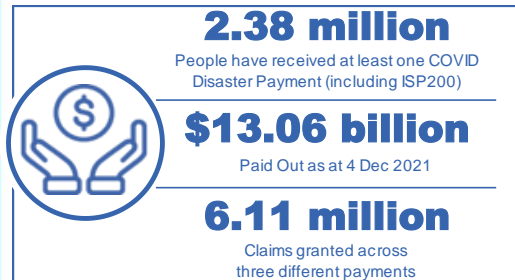
COVID-19 deaths in past 7 days - Australia and select countries



Source: OWID
Data downloaded: 05 Dec 2021 08:32
Latest data: 03 Dec 2021

Data as at midnight:
4 Dec 2021

Pandemic Response Payments



COVID Disaster Payment:	5.89 million claims received - 2.19 million individuals paid a total of \$12.59 billion.
\$200 Income Support Payment:	352,000 claims received - 183,000 individuals paid a total of \$268.85 million.
Pandemic Leave Disaster Payment:	144,000 claims received - 123,000 individuals paid a total of \$202.48 million.



COVID Disaster Payment

assisting during a lockdown event in a Commonwealth hotspot.

Income Support Payment \$200

for income support recipients who lost at least 8 hours of work.

Pandemic Leave Disaster Payment

for those who have to self-isolate, quarantine or care.

For more information visit:
servicesaustralia.gov.au

COVID-19 DISASTER PAYMENTS

Victoria

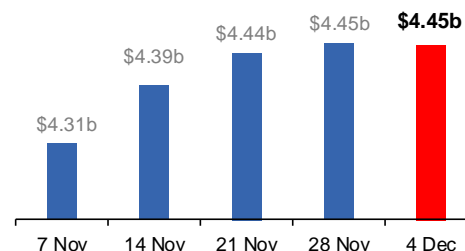
Lockdown (#6) since 6 Aug to 28 Oct
Claiming period ends 9 Dec

745,000 people have received at least one COVID Disaster Payment.

\$4.45b paid out as at 4 Dec 2021.

\$15m paid in initial and reoccurring payments in the week ending 28 Nov 2021.

Cumulative payments made by State since activation on 8 Jun 2021.



Northern Territory

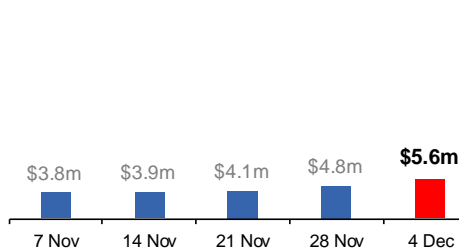
Lockdown (#3) from 16 Nov to 22 Nov
Claiming period ends 27 Dec

6,900 people have received at least one COVID Disaster Payment.

\$5.6m paid out as at 4 Dec 2021.

\$678,000 paid in initial payments in the week ending 28 Nov 2021.

Cumulative payments made by State since activation on 25 Aug 2021.



New South Wales

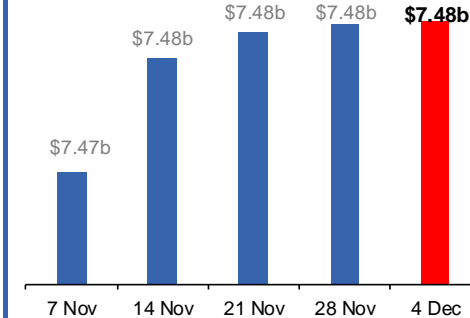
Lockdown from 24 Jun to 10 Oct
Claiming period ended 27 Nov

1.08m people have received at least one COVID Disaster Payment.

\$7.48b paid out as at 4 Dec 2021.

\$754,000 paid in initial and reoccurring payments in the week ending 28 Nov 2021.

Cumulative payments made by State since activation on 1 Jul 2021.



Australian Capital Territory

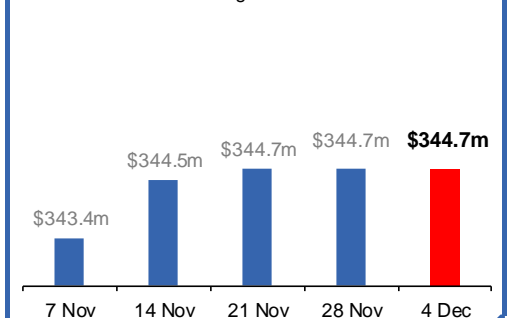
Lockdown since 12 Aug to 14 Oct
Claiming period ended 25 Nov

65,000 people have received at least one COVID Disaster Payment.

\$344.7m paid out as at 4 Dec 2021.

\$30,000 paid in initial and reoccurring payments in the week ending 28 Nov 2021.

Cumulative payments made by State since activation on 20 Aug 2021.



Pandemic Response Payments (continued)

Data as at midnight:
4 Dec 2021

COVID-19 DISASTER PAYMENTS

Tasmania

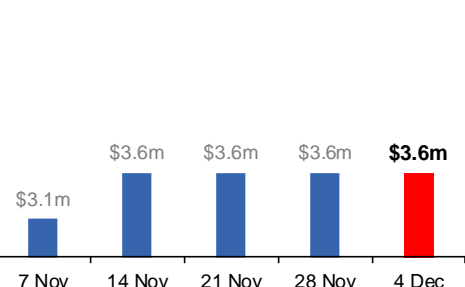
Lockdown from 15 Oct to 18 Oct
Claiming period ended 12 Nov

6,900 people have received at least one COVID Disaster Payment.

\$3.6m paid out as at 4 Dec 2021.

\$2,000 paid in initial payments in the week ending 28 Nov 2021.

Cumulative payments made by State since activation on 22 Oct 2021.



Queensland

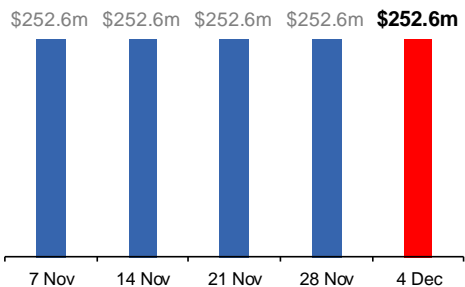
Lockdown from 31 Jul to 11 Aug
Claiming period ended 28 Aug

196,000 people have received at least one COVID Disaster Payment.

\$252.6m paid out as at 4 Dec 2021.

\$14,000 paid in initial and reoccurring payments in the week ending 28 Nov 2021.

Cumulative payments made by State since activation on 7 Aug 2021.



South Australia

Lockdown from 21 to 27 Jul
Claiming period ended 17 Aug

86,000 people have received at least one COVID Disaster Payment.

\$48.2m paid out as at 4 Dec 2021.

\$600 paid in initial and reoccurring payments in the week ending 28 Nov 2021.

Cumulative payments made by State since activation on 28 Jul 2021.

