



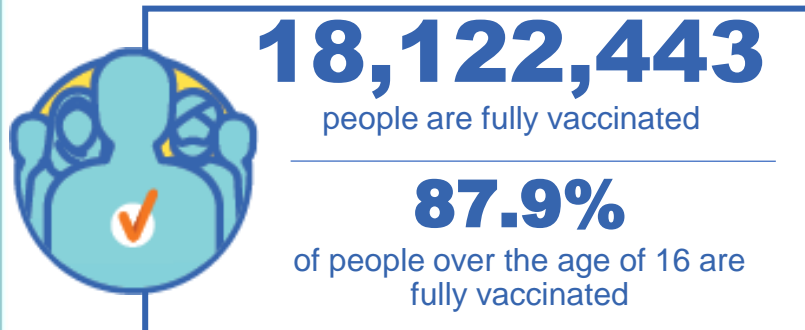
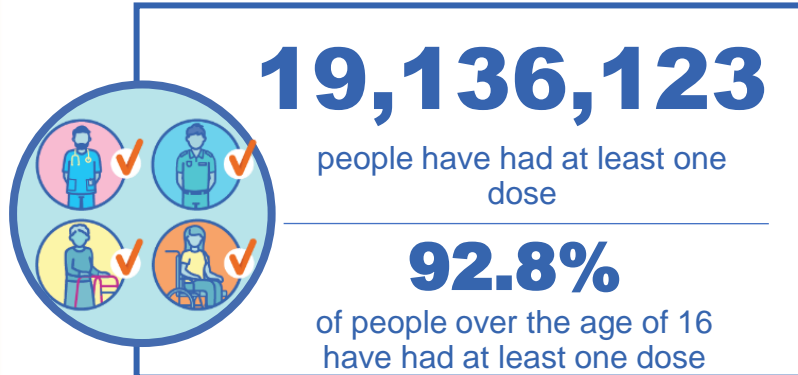
**Australian Government**  
**Operation COVID Shield**

# COVID-19 Vaccine Roll-out

04 December 2021

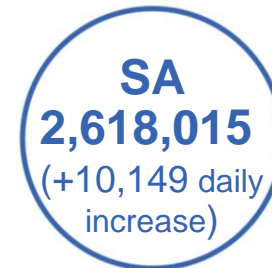
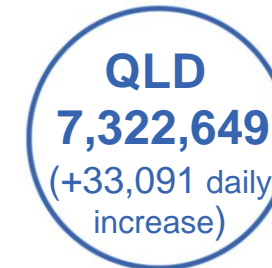
Data as at:  
03 Dec 2021

## Total vaccine doses



**39,584,348** total vaccine  
doses administered nationally as at 03 December

**+98,415** recorded in the last 24 hours



\*Administration state breakdown indicates state in which a vaccine was administered

\*\*Overall dose count includes instances of more than two doses per person in a small number of cases.

Source: Australian Immunisation Register

Data as at:  
03 Dec 2021

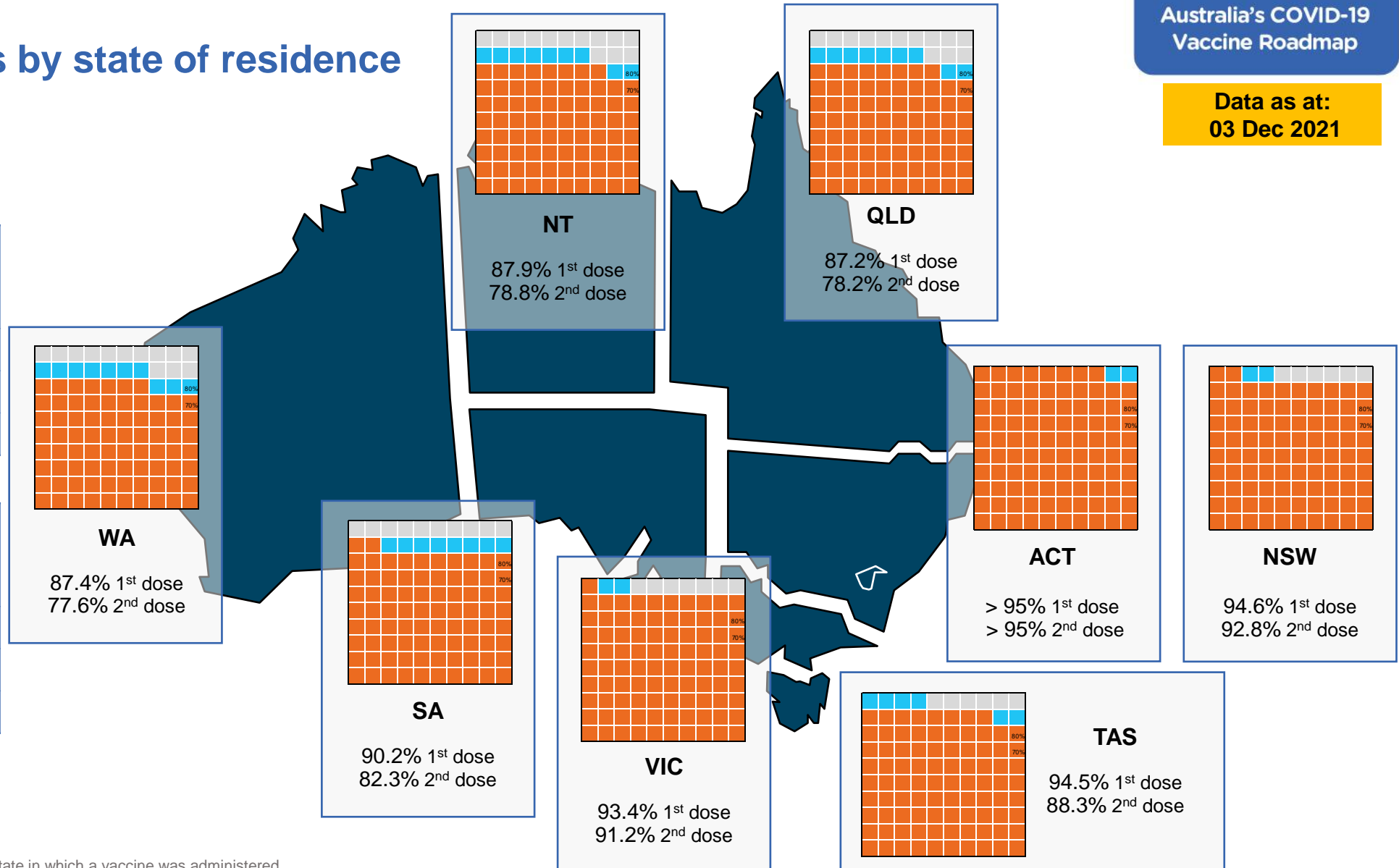
## Vaccinations by state of residence

### First doses

Age	Today	4 weeks ago	8 weeks ago
16+	92.8%	89.4%	82.7%
50+	>95%	>95%	92.3%
70+	>95%	>95%	>95%

### Fully vaccinated

Age	Today	4 weeks ago	8 weeks ago
16+	87.9%	80.6%	62.3%
50+	94.4%	88.9%	77.0%
70+	>95%	93.2%	83.8%



\*Residential state may differ from the state in which a vaccine was administered

## Commonwealth and Jurisdiction vaccine doses administered

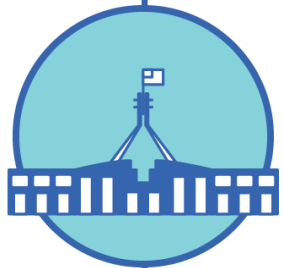
Data as at:  
03 Dec 2021



**39,584,348** total vaccine  
doses administered nationally as at 03 December  
**+ 98,415** recorded in the last 24 hours



**16,029,187**  
doses administered by state  
and territory facilities  
**+ 29,682**  
recorded in the last 24 hours



**23,555,161**  
doses administered by  
commonwealth facilities  
**+ 68,733**  
recorded in the last 24 hours

**22,421,805** total vaccine doses  
administered in primary care settings  
**1,133,356** total vaccine doses  
administered in aged care and disability  
settings

NSW	Jurisdictions	Commonwealth
Cumulative	4,222,423	8,770,984
Daily increase	2,691	13,517

VIC	Jurisdictions	Commonwealth
Cumulative	4,773,790	5,967,012
Daily increase	4,203	11,315

QLD	Jurisdictions	Commonwealth
Cumulative	2,943,216	4,379,433
Daily increase	11,536	21,555

WA	Jurisdictions	Commonwealth
Cumulative	1,680,320	2,018,496
Daily increase	4,479	12,008

TAS	Jurisdictions	Commonwealth
Cumulative	463,456	393,220
Daily increase	1,151	2,092

SA	Jurisdictions	Commonwealth
Cumulative	1,228,777	1,389,238
Daily increase	3,562	6,587

ACT	Jurisdictions	Commonwealth
Cumulative	488,385	477,370
Daily increase	1,278	682

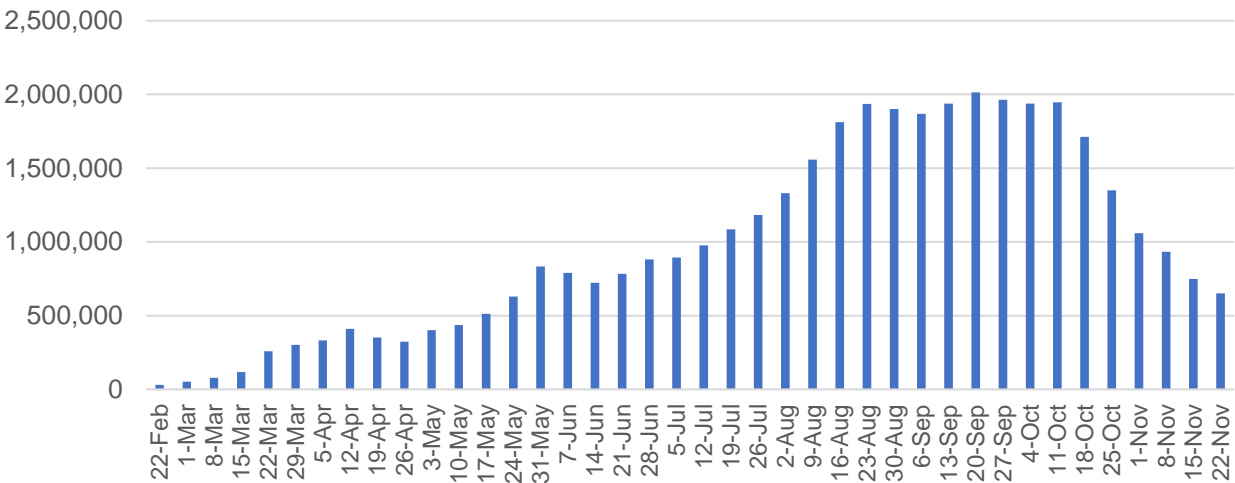
NT	Jurisdictions	Commonwealth
Cumulative	228,820	159,408
Daily increase	782	977

# Vaccine milestone charts

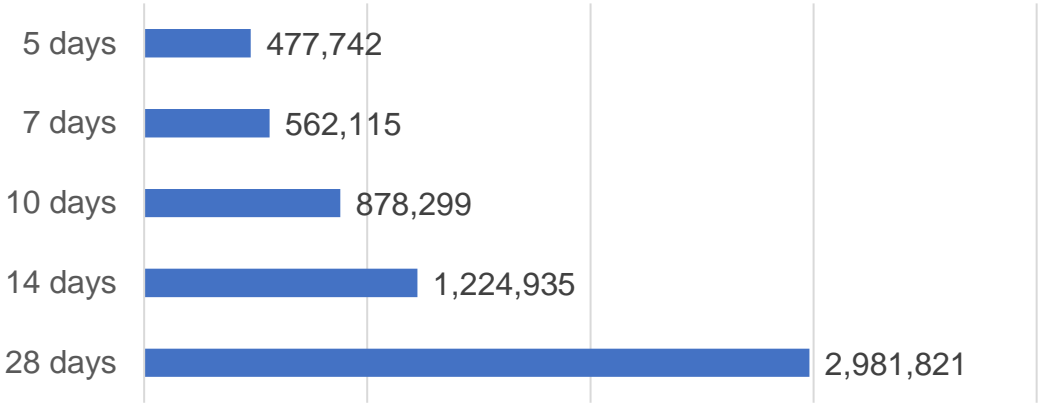
Data as at:  
03 Dec 2021

Australia's COVID-19  
Vaccine Roadmap

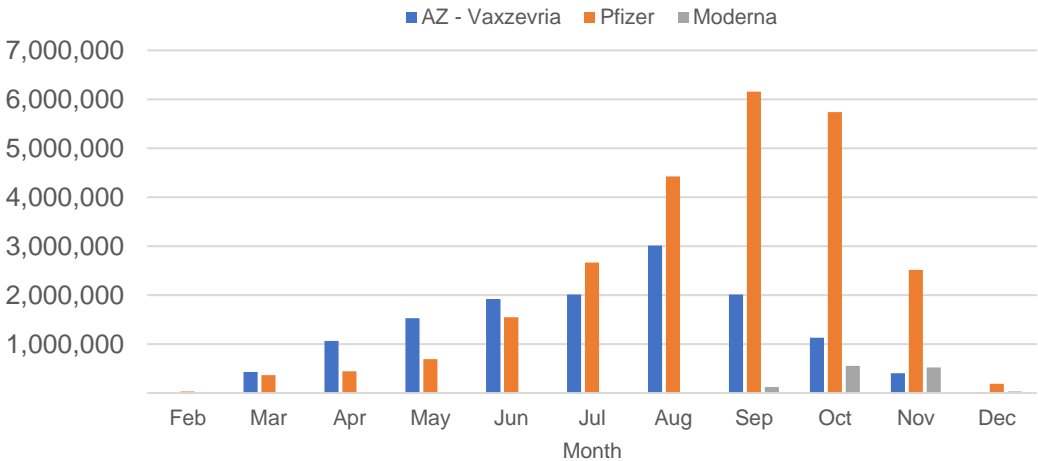
Doses Administered by Week



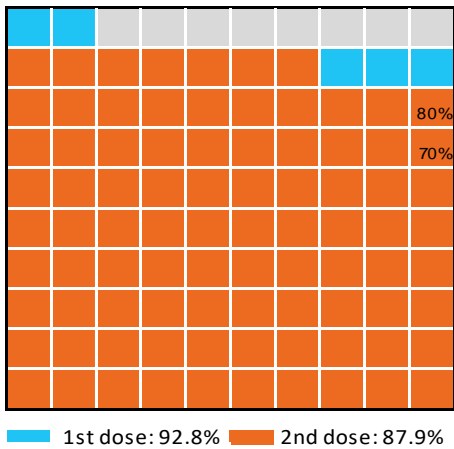
Doses Reported



Doses by administration month and vaccine type



Eligible population percentage coverage



\*Each square represents 1% of the national population.  
Squares are filled as milestones are achieved.

\*Sourced from the Australian Immunisation Register.

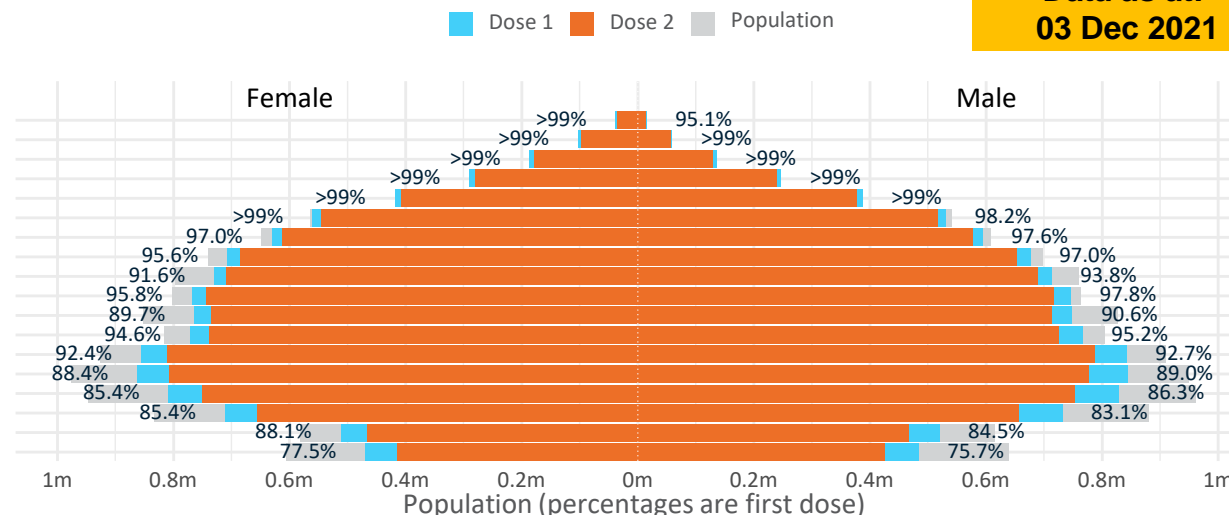
Data as at:  
03 Dec 2021

# Doses by age and sex

First and second doses by age and sex

	16+	50+	70+	12-15
Dose 1	<b>92.80%</b> (19,136,123 doses / 20,619,959 people)	<b>97.61%</b> (8,540,775 doses / 8,749,703 people)	<b>&gt;99%</b> (2,971,755 doses / 2,934,706 people)	<b>76.60%</b> (952,842 doses / 1,243,990 people)
Dose 2	<b>87.89%</b> (18,122,443 doses / 20,619,959 people)	<b>94.42%</b> (8,261,144 doses / 8,749,703 people)	<b>98.00%</b> (2,875,945 doses / 2,934,706 people)	<b>67.50%</b> (839,687 doses / 1,243,990 people)

Age	Dose 1	Dose 2
95+	52,830 (>99%)	48,429 (91.5%)
90-94	162,168 (>99%)	152,765 (96.4%)
85-89	321,877 (>99%)	307,634 (97.3%)
80-84	537,219 (>99%)	519,565 (98.3%)
75-79	805,568 (>99%)	783,993 (>99%)
70-74	1,092,093 (98.8%)	1,063,559 (96.3%)
65-69	1,225,536 (97.4%)	1,189,154 (94.5%)
60-64	1,384,906 (96.4%)	1,337,933 (93.1%)
55-59	1,442,967 (92.8%)	1,397,922 (89.9%)
50-54	1,515,611 (96.9%)	1,460,190 (93.3%)
45-49	1,513,622 (90.3%)	1,449,353 (86.4%)
40-44	1,539,601 (95.0%)	1,463,562 (90.3%)
35-39	1,701,875 (92.7%)	1,600,958 (87.2%)
30-34	1,713,370 (89.1%)	1,590,391 (82.7%)
25-29	1,646,961 (86.4%)	1,509,566 (79.2%)
20-24	1,448,338 (84.6%)	1,315,957 (76.9%)
16-19	1,031,581 (86.3%)	931,512 (77.9%)
12-15	952,842 (76.6%)	839,687 (67.5%)



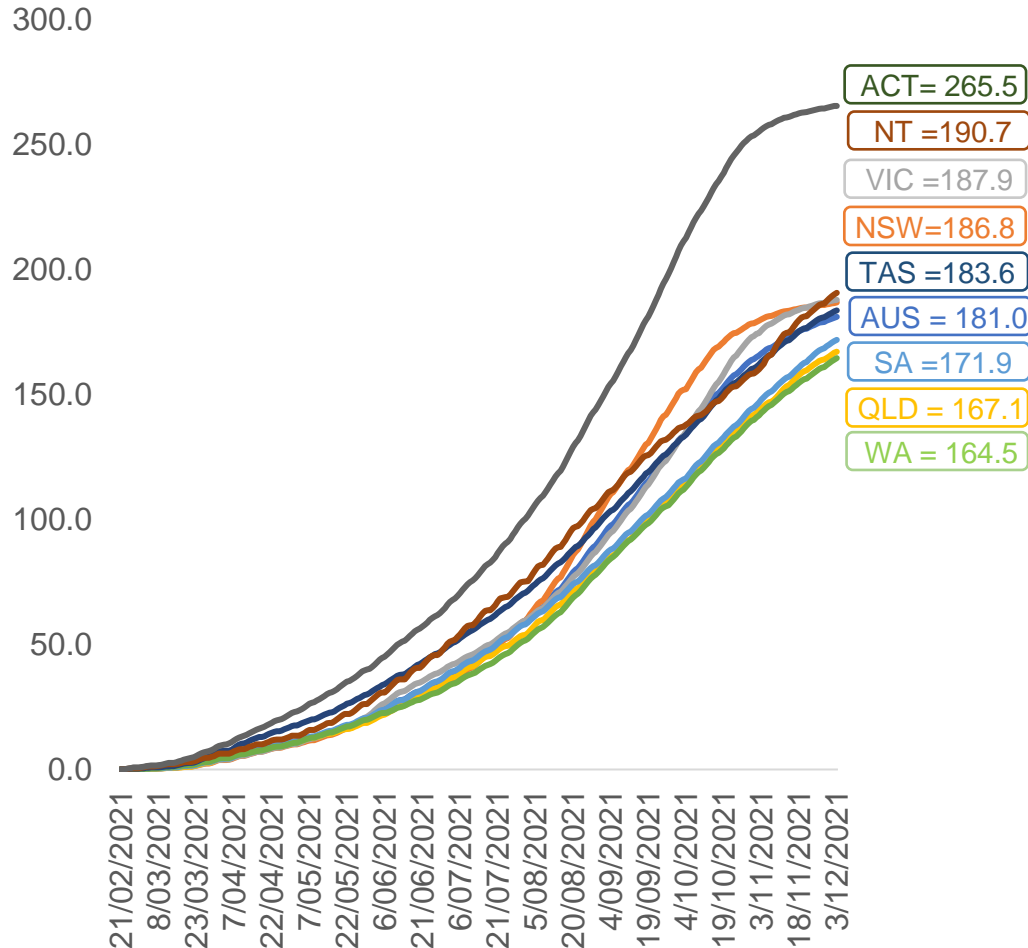
	AUS	ACT	NSW	NT	QLD	SA	TAS	VIC	WA
16 and over - dose 1	19,136,123	345,875	6,213,520	167,431	3,586,464	1,298,635	415,985	5,051,521	1,848,290
16 and over - dose 2	18,122,443	339,353	6,092,153	150,183	3,214,843	1,185,993	388,873	4,931,118	1,641,185
16 and over - population	20,619,959*	344,037	6,565,651	190,571	4,112,707	1,440,400	440,172	5,407,574	2,114,978
16 and over % with dose 1	92.80%	>99%	94.64%	87.86%	87.20%	90.16%	94.51%	93.42%	87.39%
16 and over % with dose 2	87.89%	98.64%	92.79%	78.81%	78.17%	82.34%	88.35%	91.19%	77.60%
50 and over - dose 1	8,540,775	133,833	2,769,665	56,123	1,658,342	644,855	212,528	2,171,301	836,420
50 and over - dose 2	8,261,144	131,848	2,728,322	52,780	1,571,596	609,965	203,052	2,128,681	783,936
50 and over - population	8,749,703	127,802	2,807,793	62,280	1,758,855	674,384	220,036	2,211,211	885,370
50 and over % with dose 1	97.61%	>99%	98.64%	90.11%	94.29%	95.62%	96.59%	98.20%	94.47%
50 and over % with dose 2	94.42%	>99%	97.17%	84.75%	89.35%	90.45%	92.28%	96.27%	88.54%
70 and over - dose 1	2,971,755	43,651	978,783	11,504	571,210	241,100	78,049	748,840	276,668
70 and over - dose 2	2,875,945	42,825	960,516	10,876	546,555	228,806	74,343	730,811	261,846
70 and over - population	2,934,706	39,946	962,606	12,343	577,767	240,514	77,155	743,519	280,281
70 and over % with dose 1	>99%	>99%	>99%	93.20%	98.87%	>99%	>99%	>99%	98.71%
70 and over % with dose 2	98.00%	>99%	>99%	88.11%	94.60%	95.13%	96.36%	98.29%	93.42%
12 to 15 - dose 1	952,842	19,722	317,768	9,567	175,552	57,546	19,478	268,873	76,844
12 to 15 - dose 2	839,687	18,920	301,323	7,436	140,906	44,510	16,265	246,471	58,144
12 to 15 - population	1,243,990	19,693	390,330	13,060	270,146	82,747	26,308	308,611	132,869
12 to 15 % with dose 1	76.60%	>99%	81.41%	73.25%	64.98%	69.54%	74.04%	87.12%	57.83%
12 to 15 % with dose 2	67.50%	96.07%	77.20%	56.94%	52.16%	53.79%	61.83%	79.86%	43.76%

\*National population will not equal sum of listed jurisdictions due to a small number of people counted in national population residing in some 'other' territories. Sum of state doses will not add to national total as some records are unable to be geocoded to a State or Territory.

Doses sourced from Australian Immunisation Register, population from ABS ERP June 2020

# Vaccinations by location

Cumulative total doses administered vs eligible state populations\*

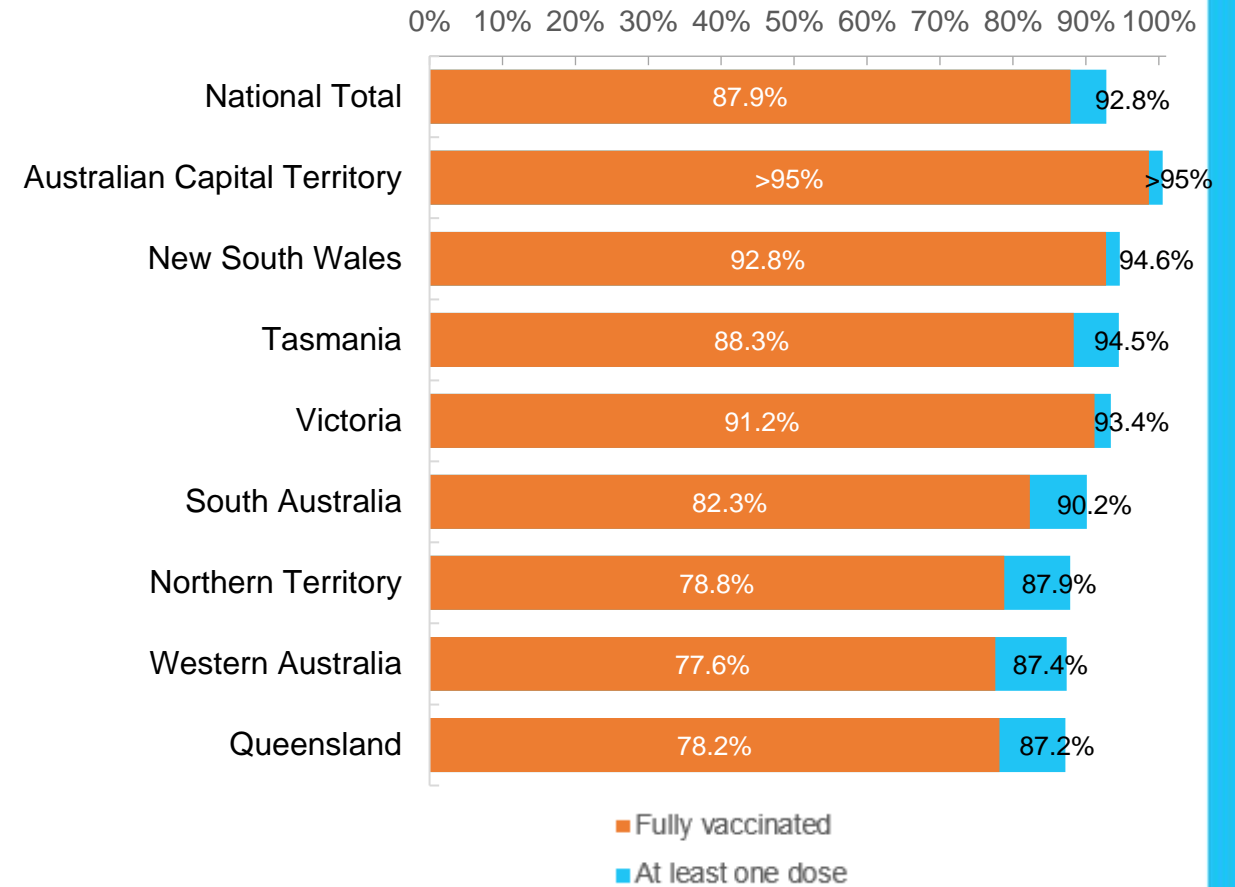


\*Not an indication of percentage vaccinated, numbers will exceed 100 due to multiple doses required per person of the population. All doses are included, including those for the 12-15 cohort, and are based on vaccination provider location.

Data as at:  
03 Dec 2021

Australia's COVID-19  
Vaccine Roadmap

First and Second Doses by state of residence



# Aboriginal and Torres Strait Islander peoples

## Number of people vaccinated

Data as at:  
30 Nov 2021  
Updated weekly

Australia's COVID-19  
Vaccine Roadmap



**391,929**

people over the age of 16  
have had at least one dose

**73.9%**

of people over the age of 16  
have had at least one dose



**331,966**

people over the age of 16  
are fully vaccinated

**62.4%**

of people over the age of 16 are  
fully vaccinated



**39,188  
(54.7%)**

people aged 12-15 years  
have had at least one dose

## 173 Aboriginal community controlled health services (ACCHS)

0#	50	27	41	12	3	21	19
<b>ACT</b>	<b>NSW</b>	<b>NT</b>	<b>QLD</b>	<b>SA</b>	<b>TAS</b>	<b>VIC</b>	<b>WA</b>

Medicare Address State <sup>##</sup>	Individuals Dose 1	Individuals Dose 1 %	Individuals Dose 2	Individuals Dose 2 %
Australian Capital Territory	4,913	90.0%	4,691	85.8%
New South Wales	136,813	85.3%	130,695	81.4%
Northern Territory	36,749	79.8%	28,194	60.9%
Queensland	96,092	66.7%	73,689	51.1%
South Australia	17,403	67.8%	13,804	53.5%
Tasmania	13,704	79.4%	12,364	71.4%
Victoria	35,451	87.5%	33,389	82.3%
Western Australia	36,959	57.5%	25,432	39.4%
Unknown/Other Territories	13,845	51.3%	9,708	35.8%
<b>Totals</b>	<b>391,929</b>	<b>73.9%</b>	<b>331,966</b>	<b>62.4%</b>

Source: Australian Immunisation Register

\*Identifying as Aboriginal and Torres Strait Islander is optional and the estimated population may be under reported.

\*\*Includes all Aboriginal and Torres Strait Islander peoples who have received a vaccination, not limited to those administered in an ACCHS setting

#ACCHS in the ACT are currently operating as a Commonwealth Vaccine Clinics so not included to avoid double counting

##The above table includes all identified Aboriginal and Torres Strait Islander people who are aged 16 and above by their state of residence.

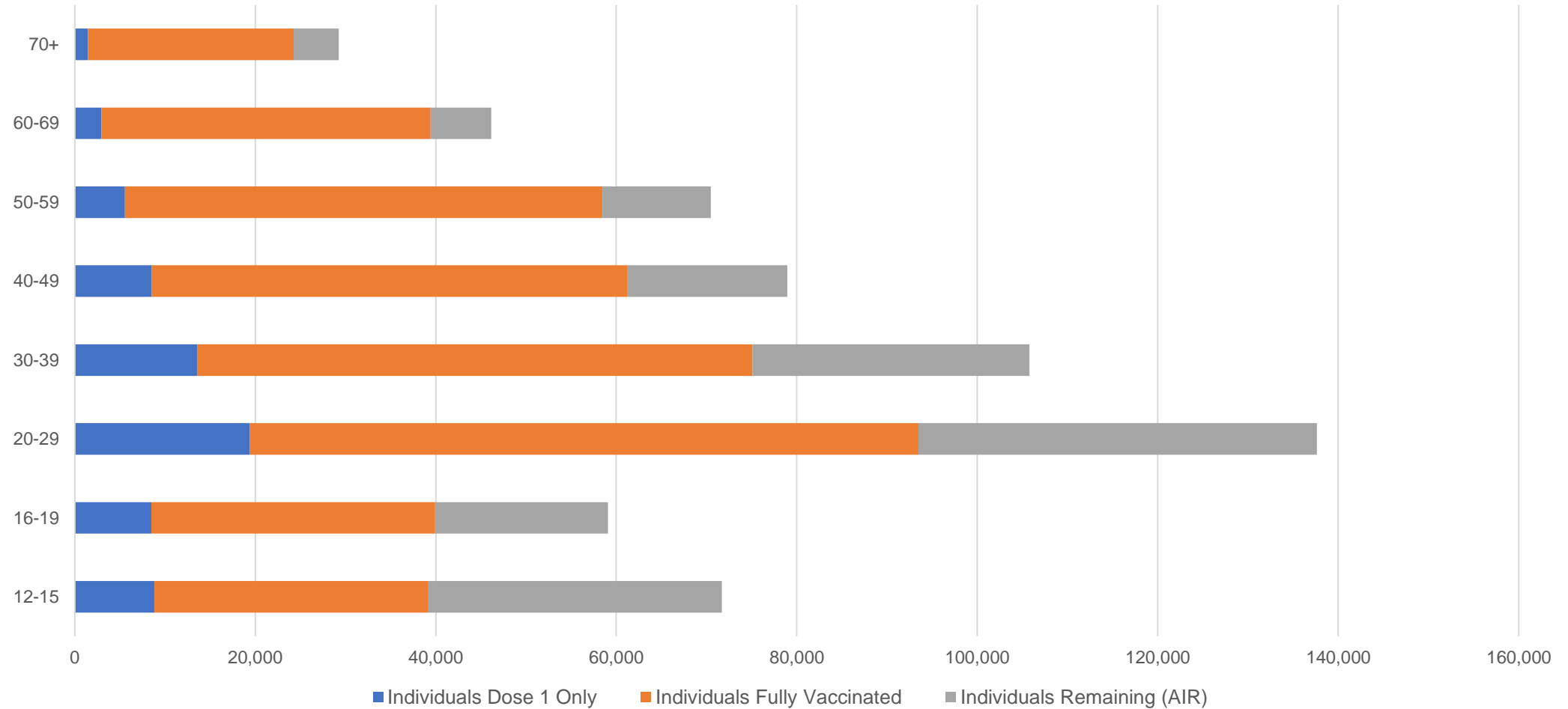


# Aboriginal and Torres Strait Islander peoples

## Number of people vaccinated by age

Data as at:  
30 Nov 2021  
Updated weekly

Australia's COVID-19  
Vaccine Roadmap



Source: Australian Immunisation Register

Data as at:  
03 Dec 2021

# Commonwealth primary care



## Primary care vaccine administration sites

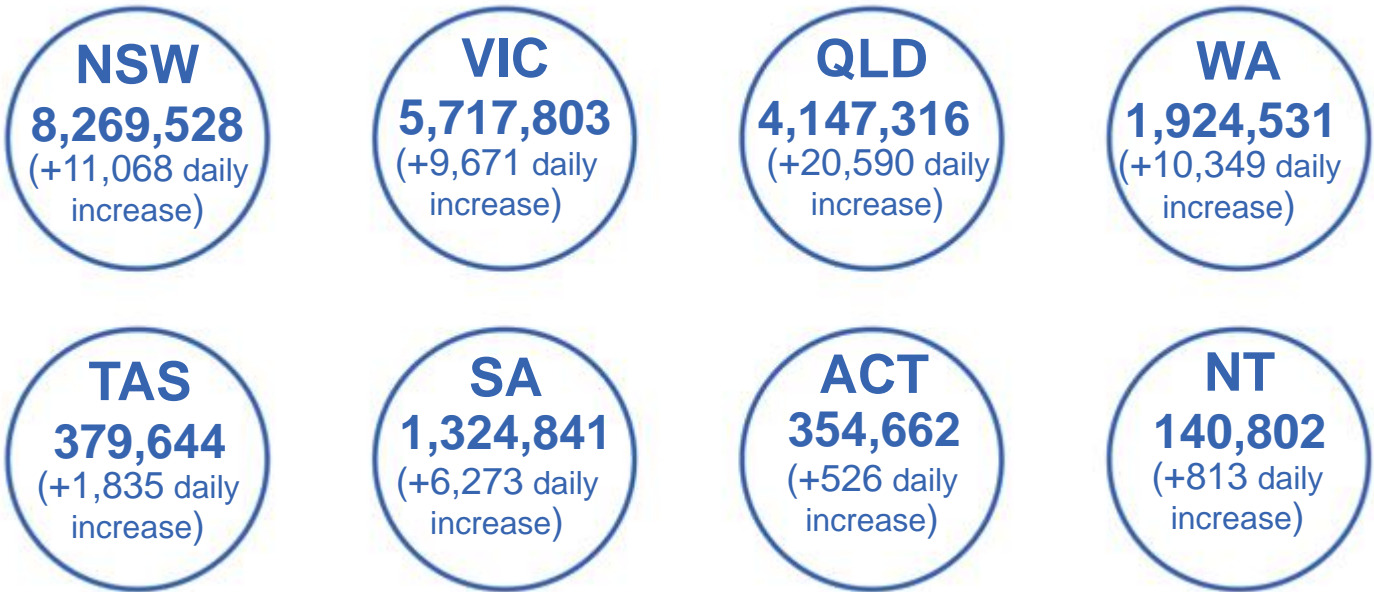
<b>5,654</b>	<b>137</b>	<b>173</b>	<b>3,457</b>
GPs	CVCs	ACCHS	Pharmacies



**22,421,805** total vaccine doses administered  
primary care settings as at 03 December  
**+ 62,200** recorded in the last 24 hours

## Primary care vaccinations by provider type

	Doses administered	Daily increase	7 day increase
General Practice* includes other Commonwealth	20,009,765	43,303	247,330
Pharmacy	2,412,040	18,897	108,250



**162,678** doses administered to persons  
residing in other territories or with  
missing residential information

\*General practice includes Commonwealth Vaccination Clinics, Aboriginal Community Health Centres, Royal Flying Doctor Service and other Commonwealth vaccination facilities

Source: Australian Immunisation Register

Data as at:  
03 Dec 2021

# Commonwealth aged care and disability doses administered



**1,133,356** (+ 6,533 last 24 hours)

Total vaccine doses administered in aged care and disability facilities as at 03 December

Number of doses administered as part of the Commonwealth aged and disability care rollout

**NSW**  
**526,966**  
(+2,646 daily increase)

**VIC**  
**210,215**  
(+727 daily increase)

**QLD**  
**173,932**  
(+777 daily increase)

**WA**  
**80,968**  
(+1,319 daily increase)

**TAS**  
**19,881**  
(+225 daily increase)

**SA**  
**72,703**  
(+365 daily increase)

**ACT**  
**14,763**  
(+148 daily increase)

**NT**  
**6,387**  
(+63 daily increase)

**27,541**

doses administered to persons  
residing in other territories or with  
missing residential information

\*Sourced from the Australian Immunisation Register. Includes all persons vaccinated at participating residential aged care, disability and related industry settings.

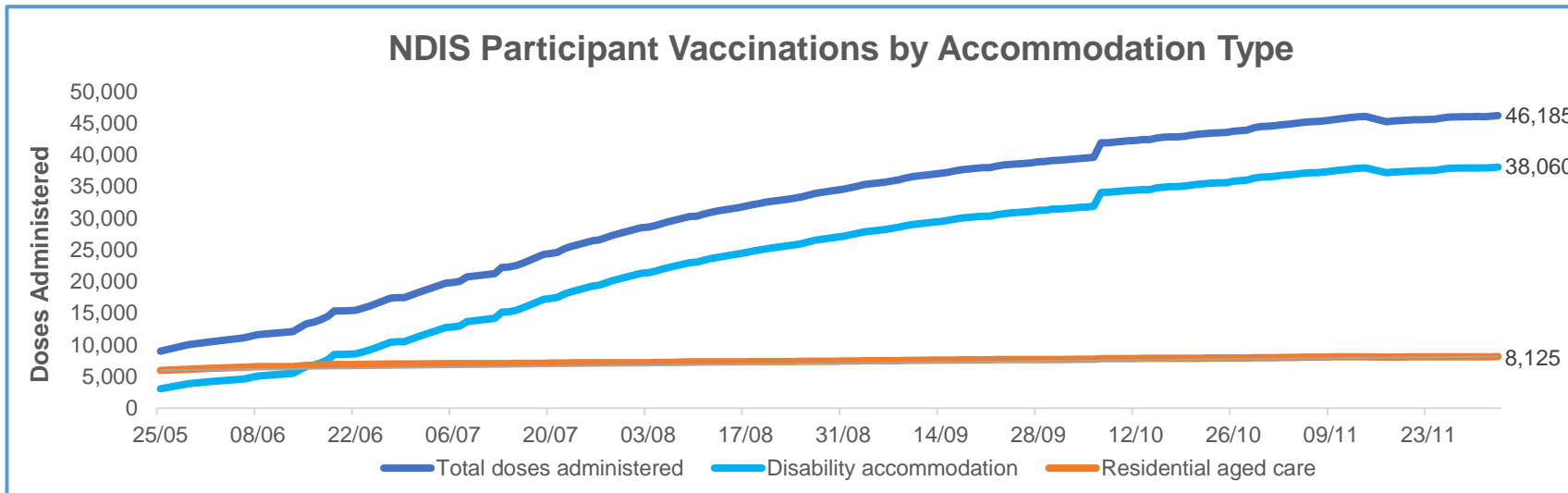
\*\*State level breakdown indicates the residential location and may not align to the state in which the vaccination occurred.

Source: Australian Immunisation Register

Data as at:  
03 Dec 2021\*

# Vaccination rate of people with disability and the disability workforce

## Phase 1a – People with disability living in shared accommodation



	Total people with at least one dose	People fully vaccinated	Total number of individuals in cohort	Total doses administered	% People with at least one dose	% People fully vaccinated
NDIS participants living in shared accommodation **	23,579	22,606	27,603	46,185	85.4%	81.9%
NDIS screened workers ***	220,892	209,953	251,862	430,845	87.7%	83.4%



\* Updates are available Monday to Friday on participants, and bi-weekly for workers, numbers may be up to four days old.

\*\* Shared accommodation means two or more people with disability living in shared residential accommodation and NDIS participants living in Residential Aged Care accommodation as per the eligibility criteria of Phase 1a. The number of residents changes over time and refinement of methodology can lead to corrections in totals.

\*\*\* Total number of workers within the NDIS Commission Worker Screening database who have ever been successfully screened and linked to an NDIS registered provider or participant.

Source: Linkage between National Disability Insurance Agency data, NDIS Quality and Safeguards Commission data and the Australian Immunisation Register.

## Residential aged care vaccination rollout

### Residential aged care facilities status

**100%** Commonwealth facilities visited (2,565 planned sites)

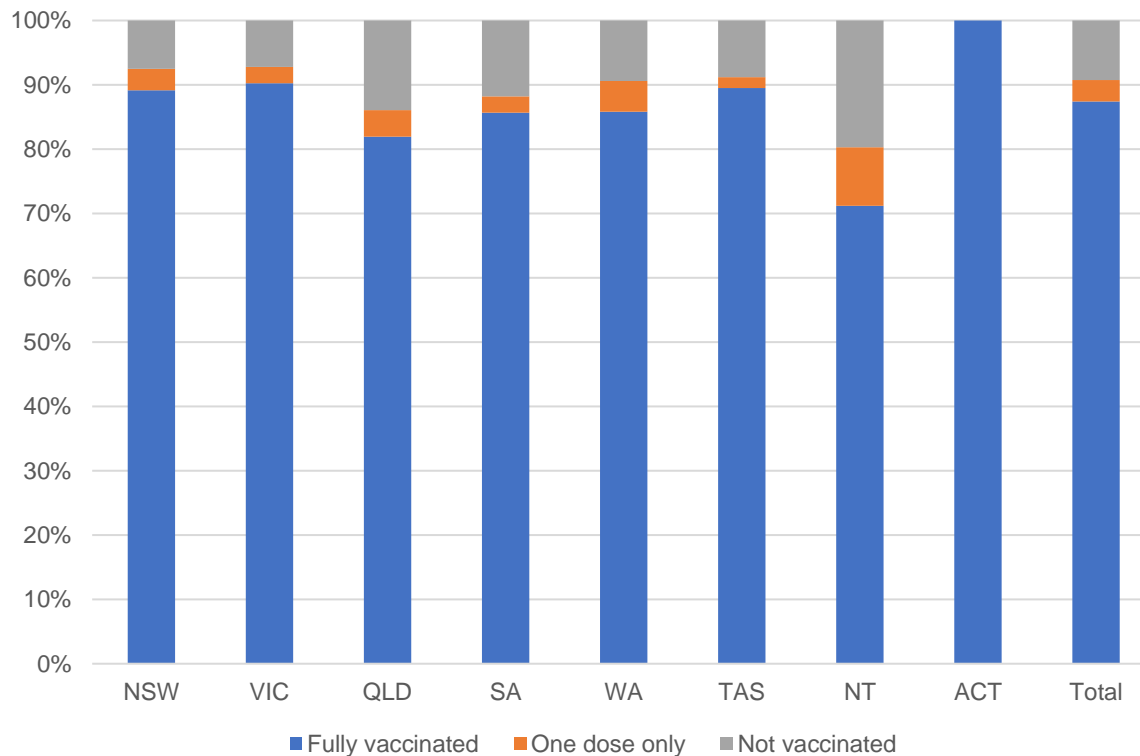
**162,211** People fully vaccinated

**168,409** People with at least one dose

Australia's COVID-19 Vaccine Roadmap

Data as at:  
02 Dec 2021

### Aged care resident vaccinations



### Aged care worker vaccinations

Jurisdictions	Total workers with at least one dose	Workers fully vaccinated	% Workers with at least one dose	% Workers fully vaccinated
NSW	79,208	79,133	99.7%	99.6%
VIC	71,212	71,126	99.8%	99.7%
QLD	49,126	48,894	100.0%	99.5%
SA	27,624	27,179	99.9%	98.3%
WA	23,702	23,537	100.0%	99.3%
TAS	7,674	7,491	99.8%	97.4%
NT	855	850	100.0%	99.4%
ACT	2,997	2,996	100.0%	100.0%
Total	262,398	261,206	99.9%	99.4%

Source: My Aged Care Portal staff vaccination progress

\*\*Resident vaccination information is reported manually by service providers

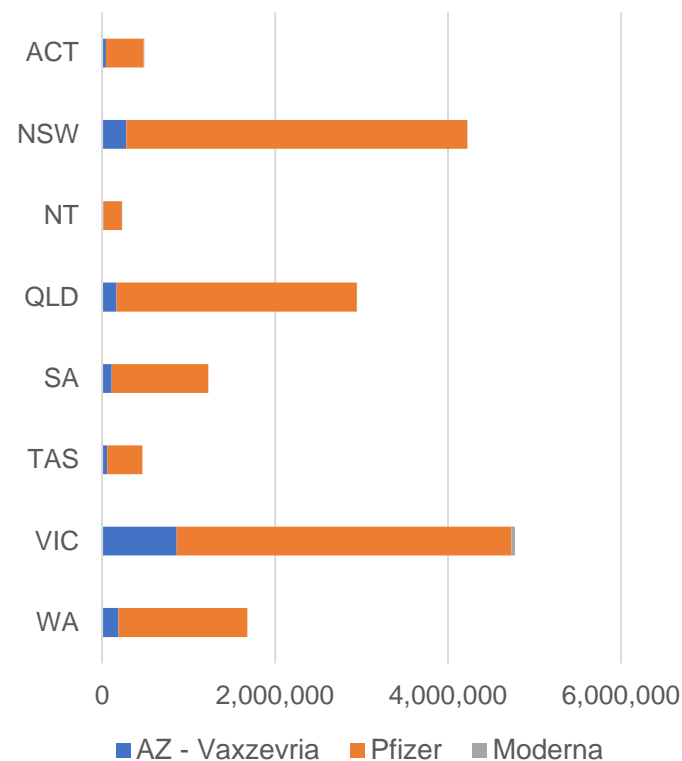
\*Status updates are provided by facilities at least once per week. Reporting is updated Monday to Friday to encompass different facility updates being made on different days.

Data is sourced directly from Aged Care Service Providers and is not drawn or closely aligned with data from AIR due to inconsistencies and potential lags in uploading of records.

Data as at:  
03 Dec 2021

# Jurisdiction administered

Total vaccine doses administered in State and Territory clinics as at 03 December



**16,029,187** total vaccine doses administered  
in State and Territory clinics as at 03 December  
+ **29,682** recorded in the last 24 hours  
+ **184,845** recorded in the last 7 days

**NSW**  
**4,222,423**  
(+2,691 daily increase)

**VIC**  
**4,773,790**  
(+4,203 daily increase)

**QLD**  
**2,943,216**  
(+11,536 daily increase)

**WA**  
**1,680,320**  
(+4,479 daily increase)

**TAS**  
**463,456**  
(+1,151 daily increase)

**SA**  
**1,228,777**  
(+3,562 daily increase)

**ACT**  
**488,385**  
(+1,278 daily increase)

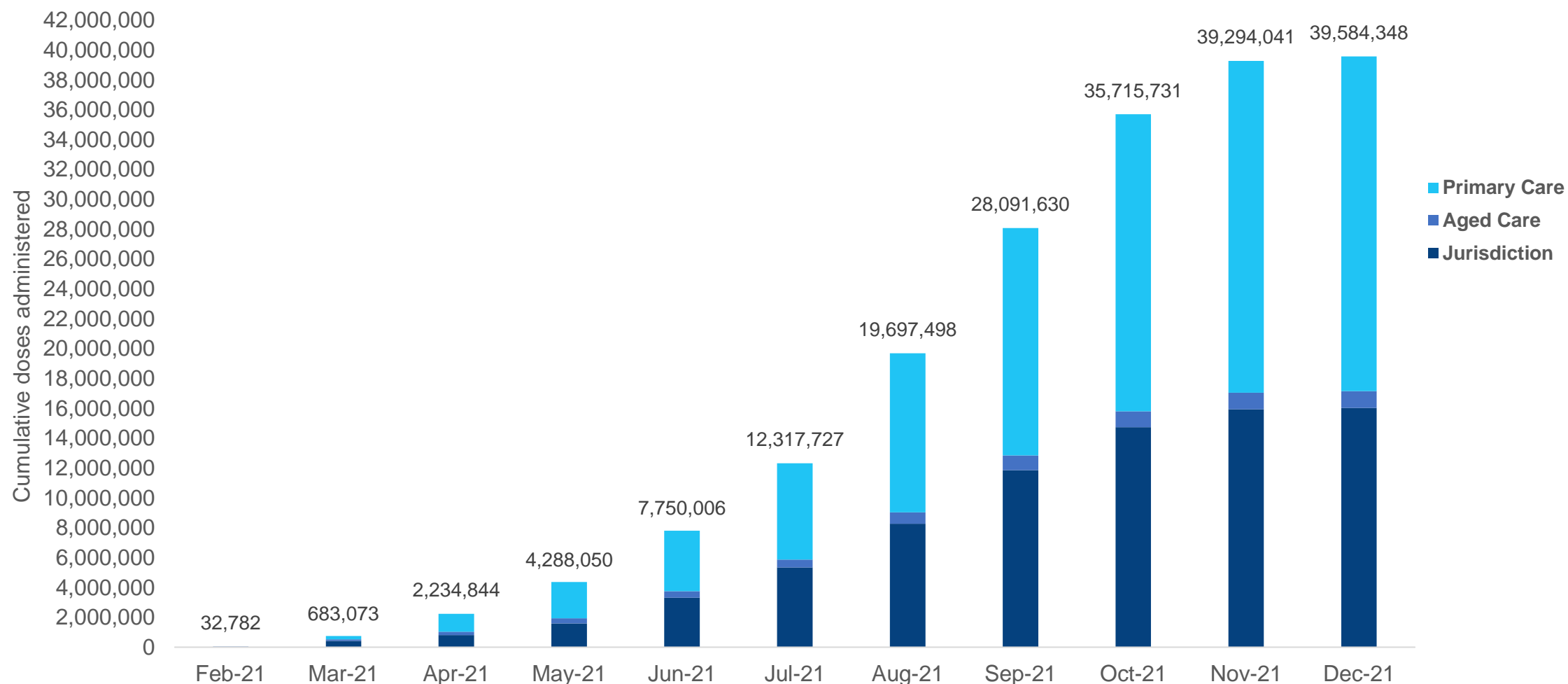
**NT**  
**228,820**  
(+782 daily increase)

\*Sourced from the Australian Immunisation Register and self-reported data. Numbers are calculated as difference in daily cumulative reported numbers to allow for historical corrections in all self-reported data sources.

# Cumulative doses administered by channel

Data as at:  
03 Dec 2021

Australia's COVID-19  
Vaccine Roadmap



Source: Australian Immunisation Register

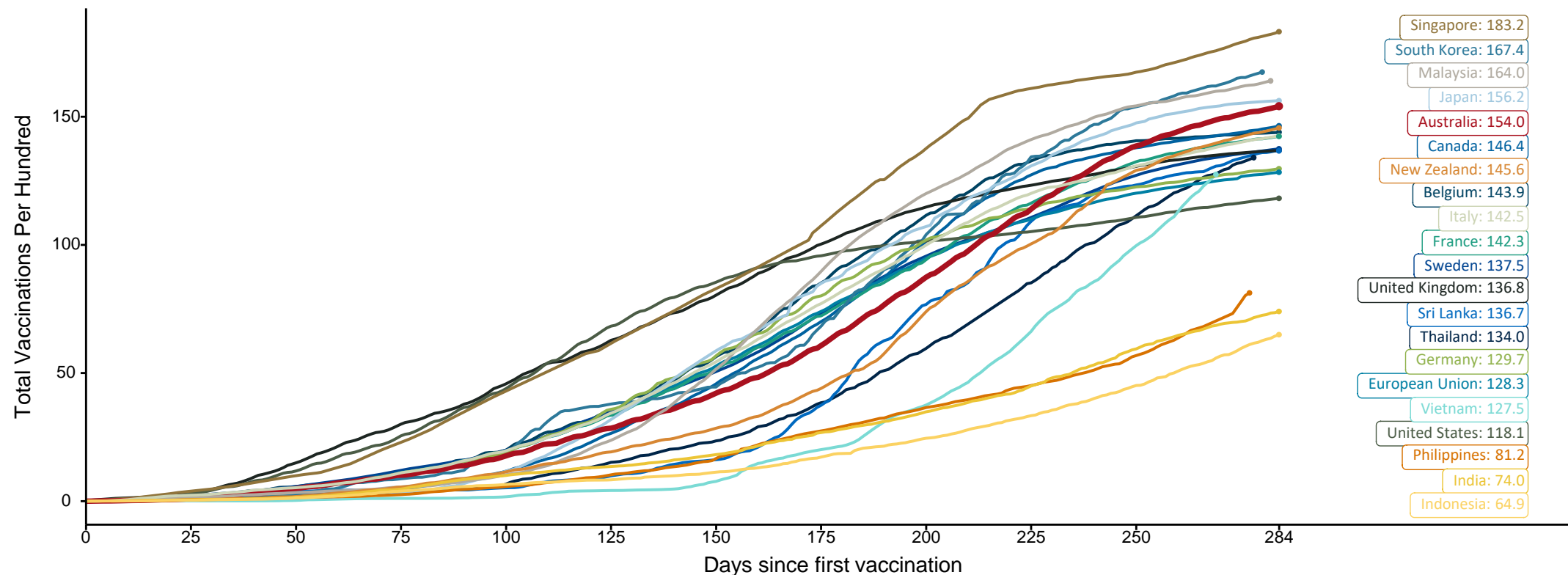


# Doses at equivalent stages of rollout (Day 284)

Data as at:  
03 Dec 2021

The x-axis is truncated at the length of Australia's vaccination program. Countries with intermittent reporting have had their doses per 100 imputed to Australia's current stage of rollout. Israel excluded as it is beyond scale of the graph

Cumulative doses administered (03 Dec): **39,584,348**



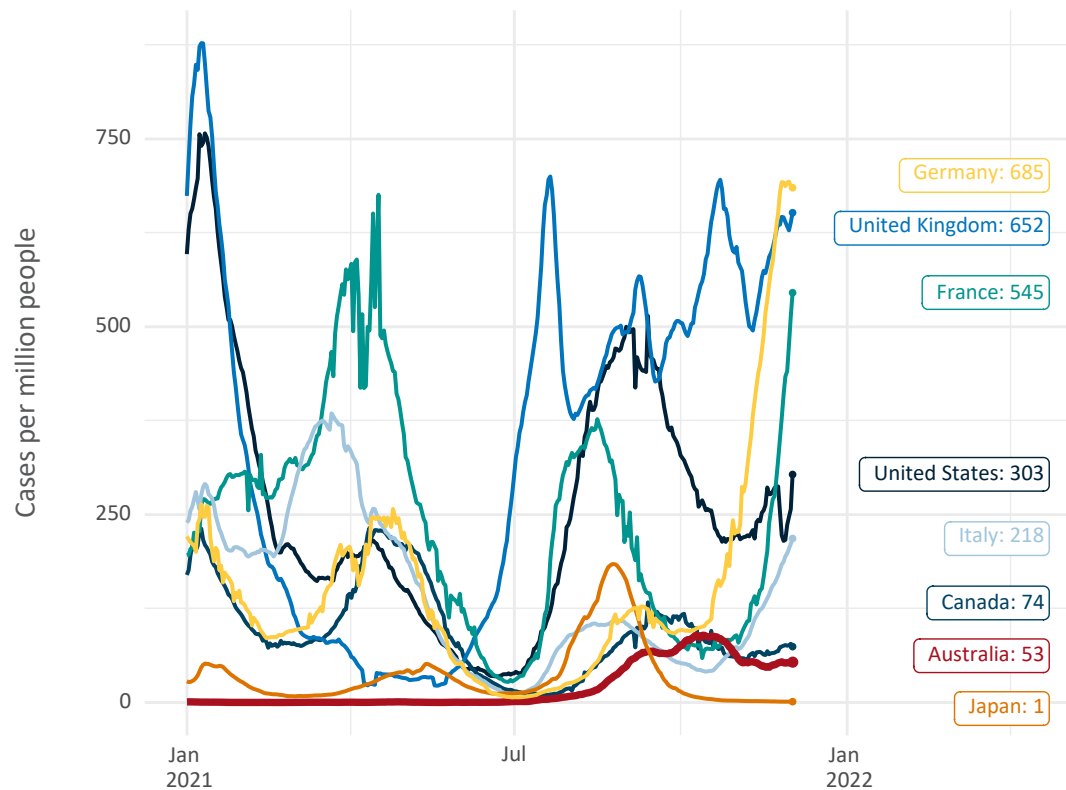
Note: From 15 September 2021, data for Australia includes all doses administered to people 12 and over. Prior to 15 September, data was for 16 and over  
Source: Department of Health (Australia), Our World in Data (international)  
Latest data: 03 December



# International data – COVID-19

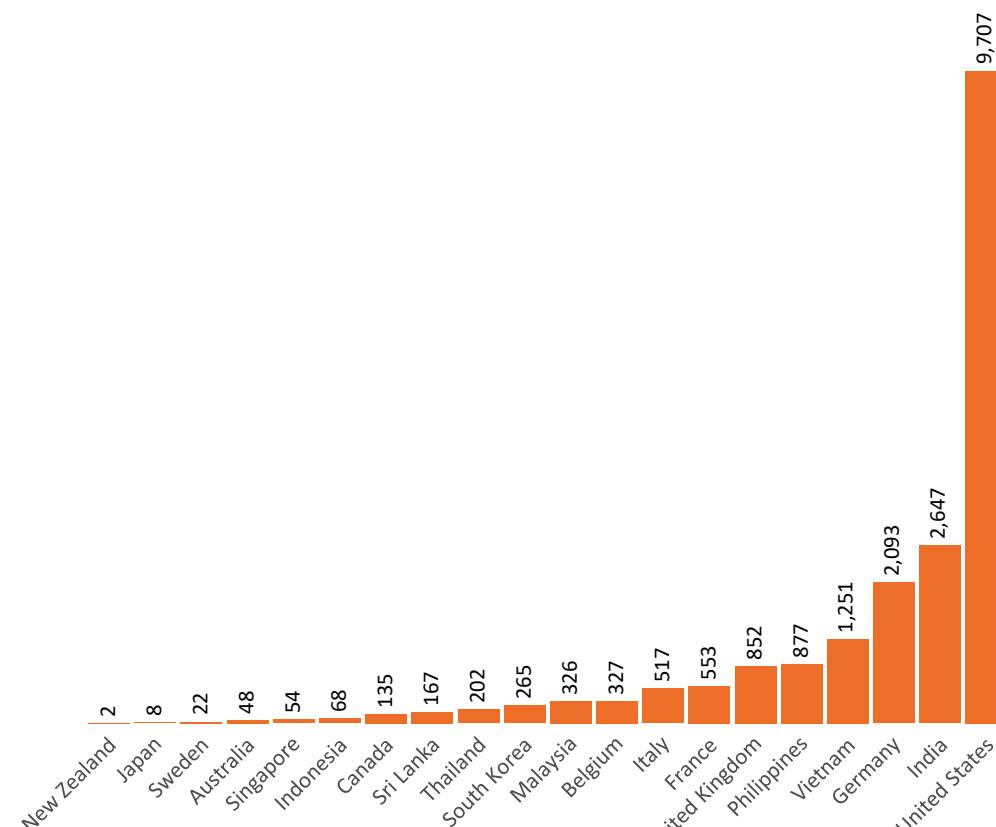
Data as at:  
03 Dec 2021

New daily cases per million in 2021, Australia and G7 countries  
Smoothed - 7 day average



Source: OWID  
Data downloaded: 04 Dec 2021 09:31  
Latest data: 02 Dec 2021

COVID-19 deaths in past 7 days - Australia and select countries

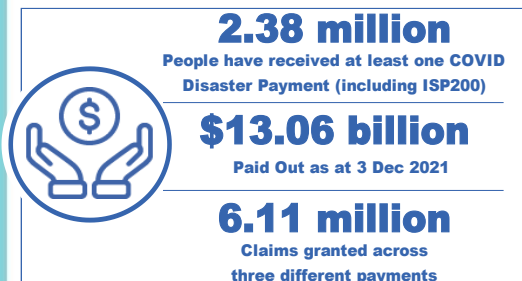


Source: OWID  
Data downloaded: 04 Dec 2021 09:31  
Latest data: 02 Dec 2021

# Pandemic Response Payments

Australia's COVID-19  
Vaccine Roadmap

Data as at midnight:  
3 Dec 2021



<b>COVID Disaster Payment:</b>	5.89 million claims received - 2.19 million individuals paid a total of \$12.59 billion.
<b>\$200 Income Support Payment:</b>	352,000 claims received - 183,000 individuals paid a total of \$268.85 million.
<b>Pandemic Leave Disaster Payment:</b>	144,000 claims received - 123,000 individuals paid a total of \$202.47 million.



## COVID Disaster Payment

assisting during a lockdown  
event in a Commonwealth  
hotspot.

## Income Support Payment \$200

for income support  
recipients who lost at  
least 8 hours of work.

## Pandemic Leave Disaster Payment

for those who have to  
self-isolate, quarantine  
or care.

For more information visit:  
[servicesaustralia.gov.au](https://servicesaustralia.gov.au)

## COVID-19 DISASTER PAYMENTS

### Victoria

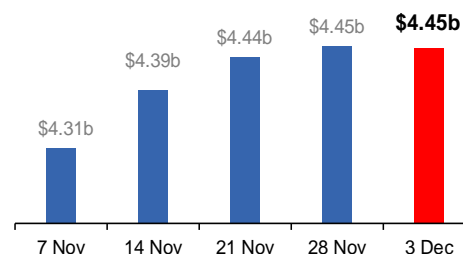
Lockdown (#6) since 6 Aug to 28 Oct  
Claiming period ends 9 Dec

**745,000 people have received at least  
one COVID Disaster Payment.**

**\$4.45b paid out as at 3 Dec 2021.**

**\$15m paid in initial and reoccurring  
payments in the week ending  
28 Nov 2021.**

Cumulative payments made by State since  
activation on 8 Jun 2021.



### Northern Territory

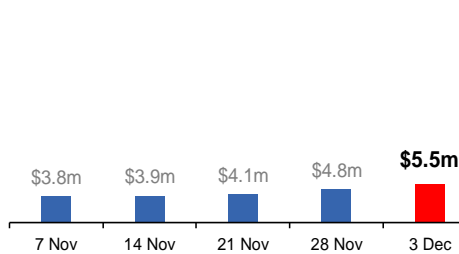
Lockdown (#3) from 16 Nov to 22 Nov  
Claiming period ends 27 Dec

**6,900 people have received at least one  
COVID Disaster Payment.**

**\$5.5m paid out as at 3 Dec 2021.**

**\$678,000 paid in initial payments in the  
week ending 28 Nov 2021.**

Cumulative payments made by State since  
activation on 25 Aug 2021.



### New South Wales

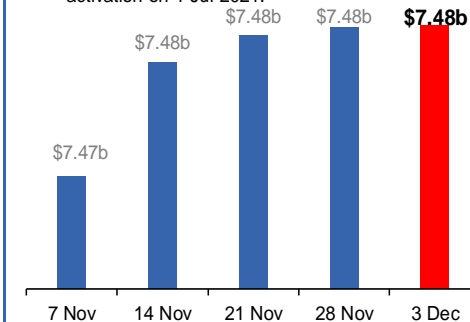
Lockdown from 24 Jun to 10 Oct  
Claiming period ended 27 Nov

**1.08m people have received at least  
one COVID Disaster Payment.**

**\$7.48b paid out as at 3 Dec 2021.**

**\$754,000 paid in initial and reoccurring  
payments in the week ending  
28 Nov 2021.**

Cumulative payments made by State since  
activation on 1 Jul 2021.



### Australian Capital Territory

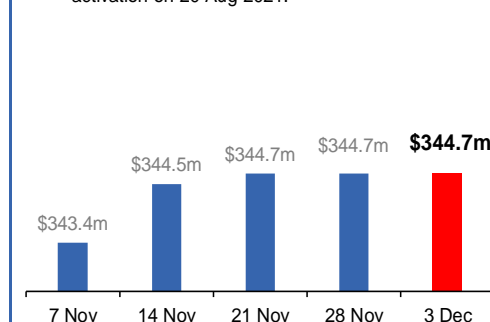
Lockdown since 12 Aug to 14 Oct  
Claiming period ended 25 Nov

**65,000 people have received at least  
one COVID Disaster Payment.**

**\$344.7m paid out as at 3 Dec 2021.**

**\$30,000 paid in initial and reoccurring  
payments in the week ending  
28 Nov 2021.**

Cumulative payments made by State since  
activation on 20 Aug 2021.



# Pandemic Response Payments (continued)

Data as at midnight:  
3 Dec 2021

## COVID-19 DISASTER PAYMENTS

