



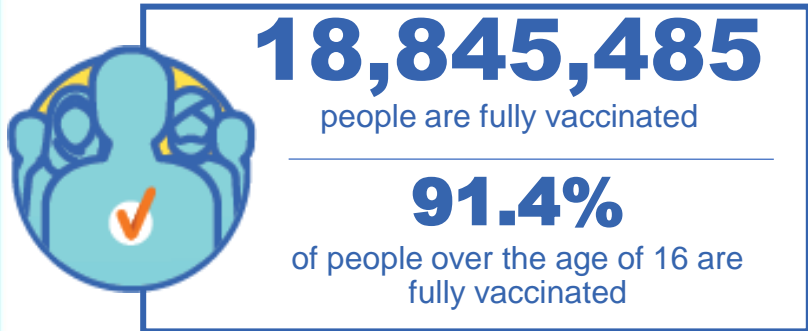
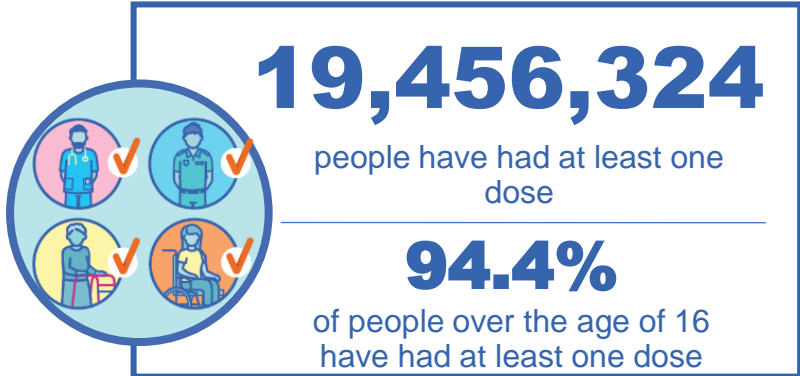
Australian Government
Operation COVID Shield

COVID-19 Vaccine Roll-out

31 December 2021

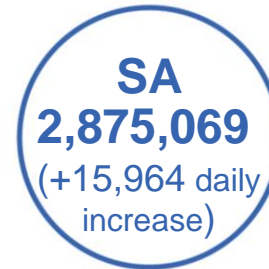
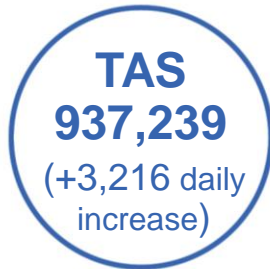
Data as at:
30 Dec 2021

Total vaccine doses



42,598,706 total vaccine doses administered nationally as at 30 December

+160,279 recorded in the last 24 hours



*Administration state breakdown indicates state in which a vaccine was administered
**Overall dose count includes instances of more than two doses per person in a small number of cases.

Source: Australian Immunisation Register

Data as at:
30 Dec 2021

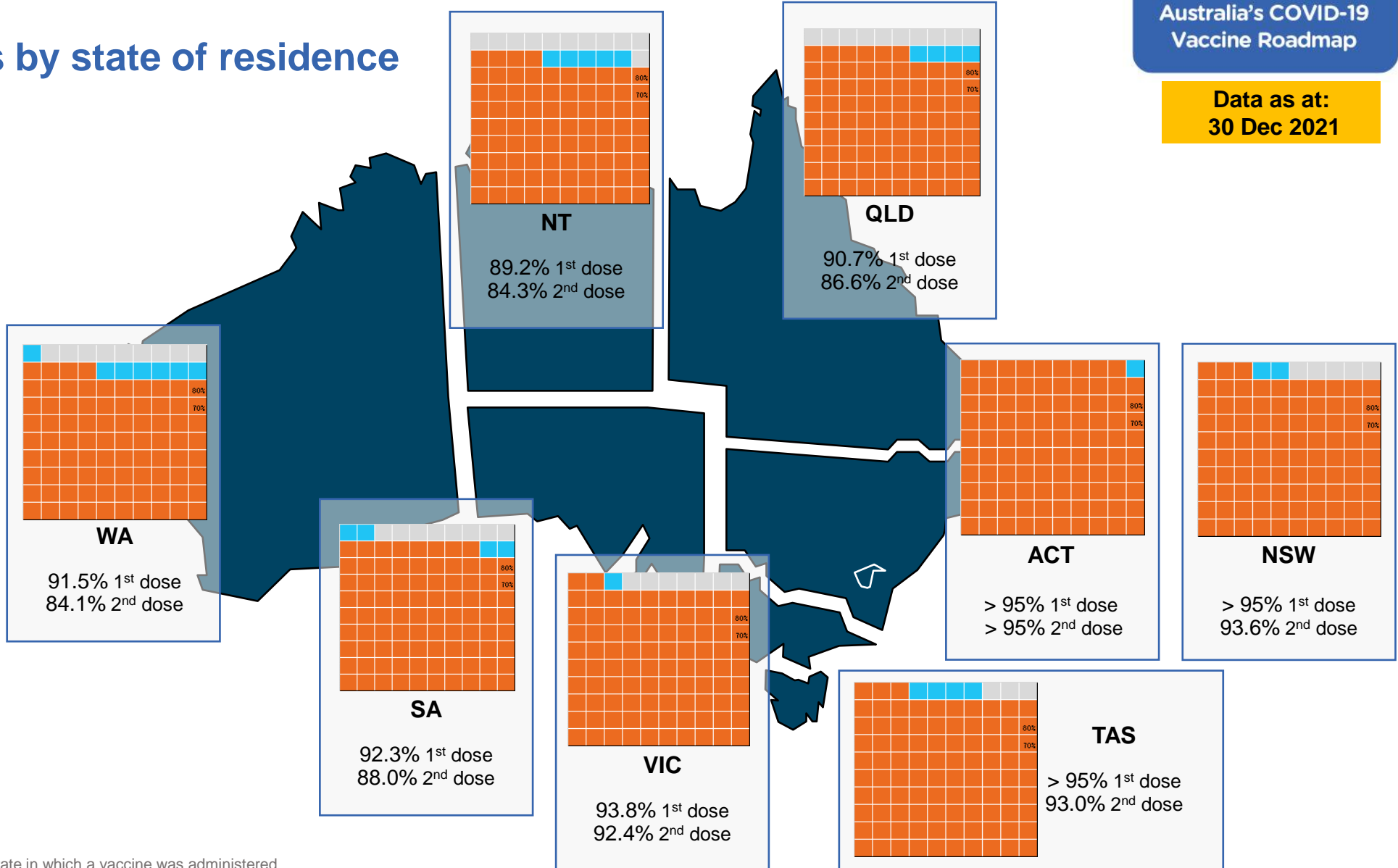
Vaccinations by state of residence

First doses

Age	Today	4 weeks ago	8 weeks ago
16+	94.4%	93.0%	89.5%
50+	>95%	>95%	>95%
70+	>95%	>95%	>95%

Fully vaccinated

Age	Today	4 weeks ago	8 weeks ago
16+	91.4%	88.0%	80.3%
50+	>95%	94.7%	88.8%
70+	>95%	>95%	93.6%



*Residential state may differ from the state in which a vaccine was administered

Commonwealth and Jurisdiction vaccine doses administered

Data as at:
30 Dec 2021



42,598,706 total vaccine doses administered nationally as at 30 December

+ **160,279** recorded in the last 24 hours

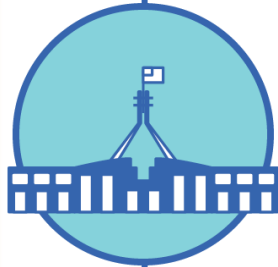


16,992,379

doses administered by state and territory facilities

+ **39,131**

recorded in the last 24 hours



25,606,327

doses administered by commonwealth facilities

+ **121,148**

recorded in the last 24 hours

24,433,126 total vaccine doses administered in primary care settings

1,173,201 total vaccine doses administered in aged care and disability settings

NSW	Jurisdictions	Commonwealth
Cumulative	4,386,217	9,313,642
Daily increase	4,251	33,887

VIC	Jurisdictions	Commonwealth
Cumulative	4,936,981	6,375,048
Daily increase	3,808	26,493

QLD	Jurisdictions	Commonwealth
Cumulative	3,238,908	4,984,267
Daily increase	11,813	28,338

WA	Jurisdictions	Commonwealth
Cumulative	1,818,182	2,273,244
Daily increase	10,999	17,798

TAS	Jurisdictions	Commonwealth
Cumulative	492,281	444,958
Daily increase	641	2,575

SA	Jurisdictions	Commonwealth
Cumulative	1,341,368	1,533,701
Daily increase	6,044	9,920

ACT	Jurisdictions	Commonwealth
Cumulative	532,425	506,910
Daily increase	998	1,411

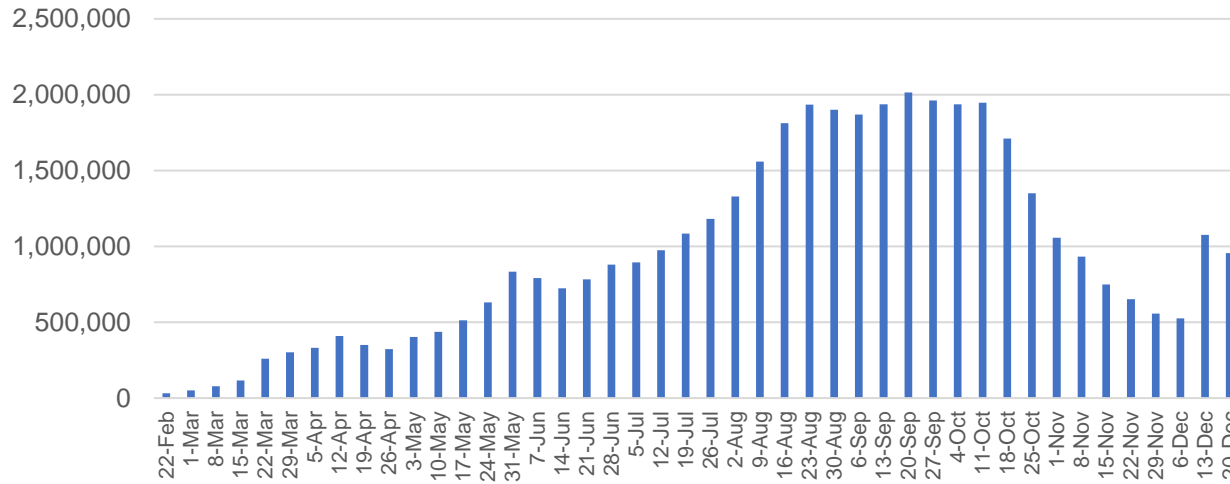
NT	Jurisdictions	Commonwealth
Cumulative	246,017	174,557
Daily increase	577	726

Vaccine milestone charts

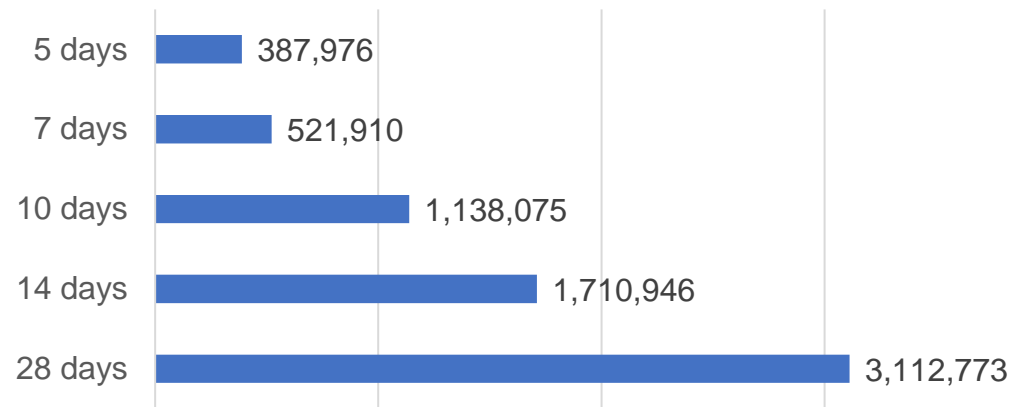
Data as at:
30 Dec 2021

Australia's COVID-19
Vaccine Roadmap

Doses Administered by Week

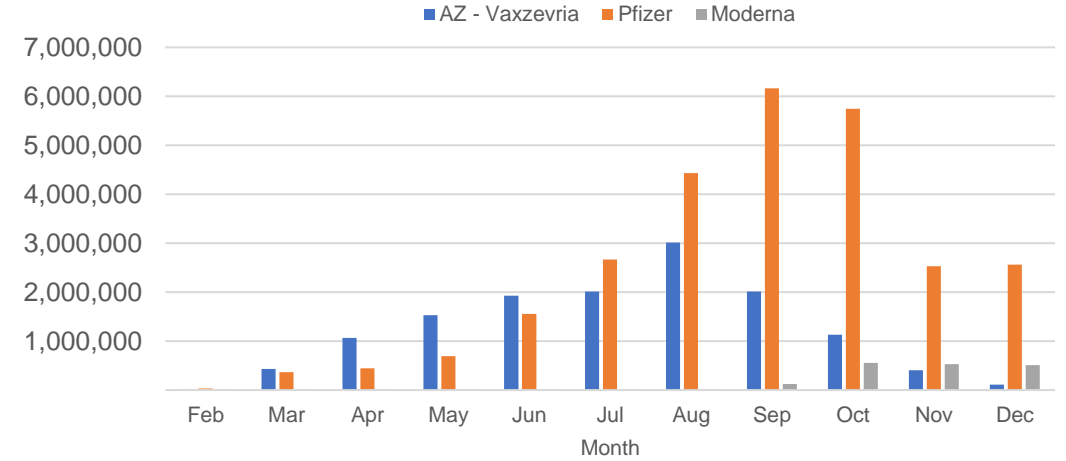


Doses Reported

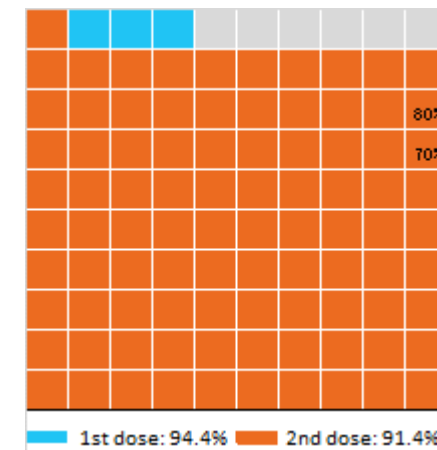


*Sourced from the Australian Immunisation Register.

Doses by administration month and vaccine type



Eligible population percentage coverage



*Each square represents 1% of the national population. Squares are filled as milestones are achieved.

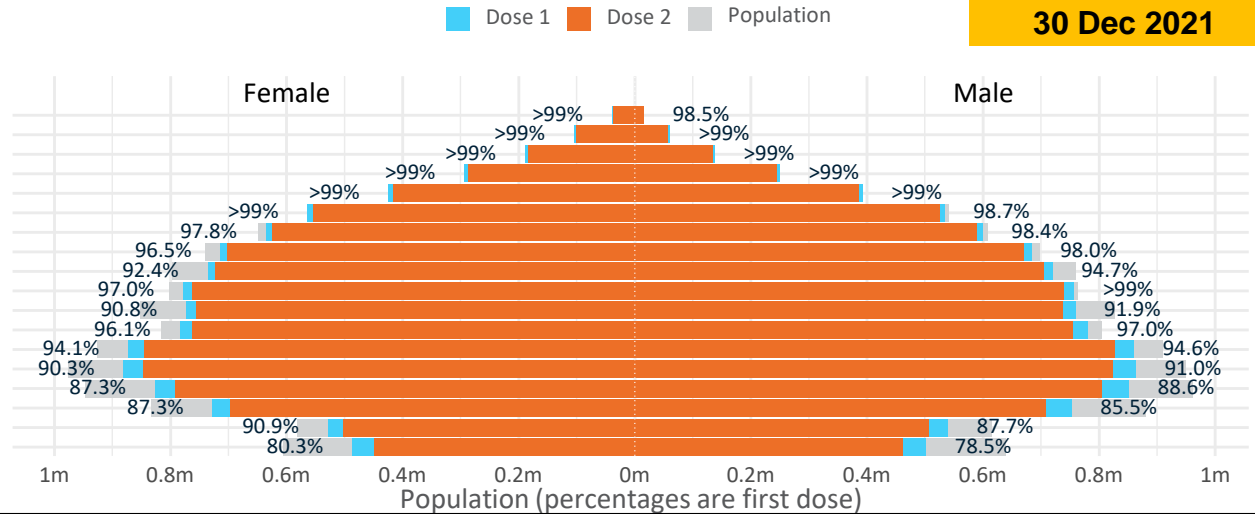
Doses by age and sex

First and second doses by age and sex

Data as at: 30 Dec 2021

	16+	50+	70+	12-15
Dose 1	94.36% (19,456,324 doses / 20,619,959 people)	98.61% (8,628,121 doses / 8,749,703 people)	>99% (3,002,961 doses / 2,934,706 people)	79.42% (988,022 doses / 1,243,990 people)
Dose 2	91.39% (18,845,485 doses / 20,619,959 people)	96.65% (8,456,724 doses / 8,749,703 people)	>99% (2,938,998 doses / 2,934,706 people)	73.18% (910,352 doses / 1,243,990 people)

Age	Dose 1	Dose 2
95+	54,569 (>99%)	50,779 (96.0%)
90-94	165,120 (>99%)	157,742 (>99%)
85-89	326,867 (>99%)	316,490 (>99%)
80-84	542,913 (>99%)	531,067 (>99%)
75-79	816,302 (>99%)	802,587 (>99%)
70-74	1,097,190 (>99%)	1,080,333 (97.8%)
65-69	1,235,667 (98.2%)	1,215,302 (96.6%)
60-64	1,397,930 (97.3%)	1,372,598 (95.5%)
55-59	1,456,040 (93.6%)	1,428,214 (91.8%)
50-54	1,535,523 (98.1%)	1,501,612 (96.0%)
45-49	1,532,606 (91.4%)	1,493,511 (89.1%)
40-44	1,566,565 (96.7%)	1,519,644 (93.8%)
35-39	1,736,109 (94.6%)	1,674,406 (91.2%)
30-34	1,751,327 (91.0%)	1,676,356 (87.1%)
25-29	1,687,693 (88.5%)	1,605,016 (84.2%)
20-24	1,485,459 (86.8%)	1,409,728 (82.3%)
16-19	1,068,444 (89.4%)	1,010,100 (84.5%)
12-15	988,022 (79.4%)	910,352 (73.2%)



	AUS	ACT	NSW	NT	QLD	SA	TAS	VIC	WA
16 and over - dose 1	19,456,324	347,186	6,237,395	170,021	3,728,918	1,329,015	430,208	5,074,440	1,935,285
16 and over - dose 2	18,845,485	342,325	6,144,349	160,645	3,561,559	1,268,272	409,580	4,997,681	1,778,973
16 and over - population	20,619,959*	344,037	6,565,651	190,571	4,112,707	1,440,400	440,172	5,407,574	2,114,978
16 and over % with dose 1	94.36%	>99%	95.00%	89.22%	90.67%	92.27%	97.74%	93.84%	91.50%
16 and over % with dose 2	91.39%	>99%	93.58%	84.30%	86.60%	88.05%	93.05%	92.42%	84.11%
50 and over - dose 1	8,628,121	134,470	2,782,097	56,712	1,691,044	653,770	215,736	2,182,700	855,437
50 and over - dose 2	8,456,724	132,915	2,749,828	54,954	1,648,323	634,924	209,983	2,155,405	819,687
50 and over - population	8,749,703	127,802	2,807,793	62,280	1,758,855	674,384	220,036	2,211,211	885,370
50 and over % with dose 1	98.61%	>99%	>99%	91.06%	96.14%	96.94%	98.05%	98.71%	96.62%
50 and over % with dose 2	96.65%	>99%	97.94%	88.24%	93.72%	94.15%	95.43%	97.48%	92.58%
70 and over - dose 1	3,002,961	43,936	985,555	11,684	580,317	244,616	79,190	754,693	281,381
70 and over - dose 2	2,938,998	43,278	970,770	11,315	566,139	237,297	76,929	742,561	271,408
70 and over - population	2,934,706	39,946	962,606	12,343	577,767	240,514	77,155	743,519	280,281
70 and over % with dose 1	>99%	>99%	>99%	94.66%	>99%	>99%	>99%	>99%	>99%
70 and over % with dose 2	>99%	>99%	>99%	91.67%	97.99%	98.66%	>99%	>99%	96.83%
12 to 15 - dose 1	988,022	19,737	318,172	9,988	189,572	61,953	20,758	271,483	88,955
12 to 15 - dose 2	910,352	19,083	305,224	8,630	168,852	54,813	18,589	257,967	71,052
12 to 15 - population	1,243,990	19,693	390,330	13,060	270,146	82,747	26,308	308,611	132,869
12 to 15 % with dose 1	79.42%	>99%	81.51%	76.48%	70.17%	74.87%	78.90%	87.97%	66.95%
12 to 15 % with dose 2	73.18%	96.90%	78.20%	66.08%	62.50%	66.24%	70.66%	83.59%	53.48%

*National population will not equal sum of listed jurisdictions due to a small number of people counted in national population residing in some 'other' territories. Sum of state doses will not add to national total as some records are unable to be geocoded to a State or Territory.
Doses sourced from Australian Immunisation Register, population from ABS ERP June 2020

Aboriginal and Torres Strait Islander peoples

Number of people vaccinated

Data as at:
28 Dec 2021
Updated weekly



415,514

people over the age of 16
have had at least one dose

78.8%

of people over the age of 16
have had at least one dose



374,181

people over the age of 16
are fully vaccinated

71.0%

of people over the age of 16 are
fully vaccinated



**42,469
(59.4%)**

people aged 12-15 years
have had at least one dose

173 Aboriginal community controlled health services (ACCHS)

0#	50	27	41	12	3	21	19
ACT	NSW	NT	QLD	SA	TAS	VIC	WA

Medicare Address State ^{##}	Individuals Dose 1	Individuals Dose 1 %	Individuals Dose 2	Individuals Dose 2 %
Australian Capital Territory	4,953	90.7%	4,800	87.9%
New South Wales	137,647	86.2%	133,561	83.7%
Northern Territory	39,591	84.2%	34,497	73.4%
Queensland	108,070	75.4%	93,797	65.4%
South Australia	18,694	73.6%	16,211	63.8%
Tasmania	14,416	84.9%	13,336	78.5%
Victoria	35,757	88.6%	34,561	85.6%
Western Australia	42,332	66.4%	32,420	50.8%
Unknown/Other Territories	14,054	56.0%	10,998	43.8%
Totals	415,514	78.8%	374,181	71.0%

Source: Australian Immunisation Register

*Identifying as Aboriginal and Torres Strait Islander is optional and the estimated population may be under reported.

**Includes all Aboriginal and Torres Strait Islander peoples who have received a vaccination, not limited to those administered in an ACCHS setting

#ACCHS in the ACT are currently operating as a Commonwealth Vaccine Clinics so not included to avoid double counting

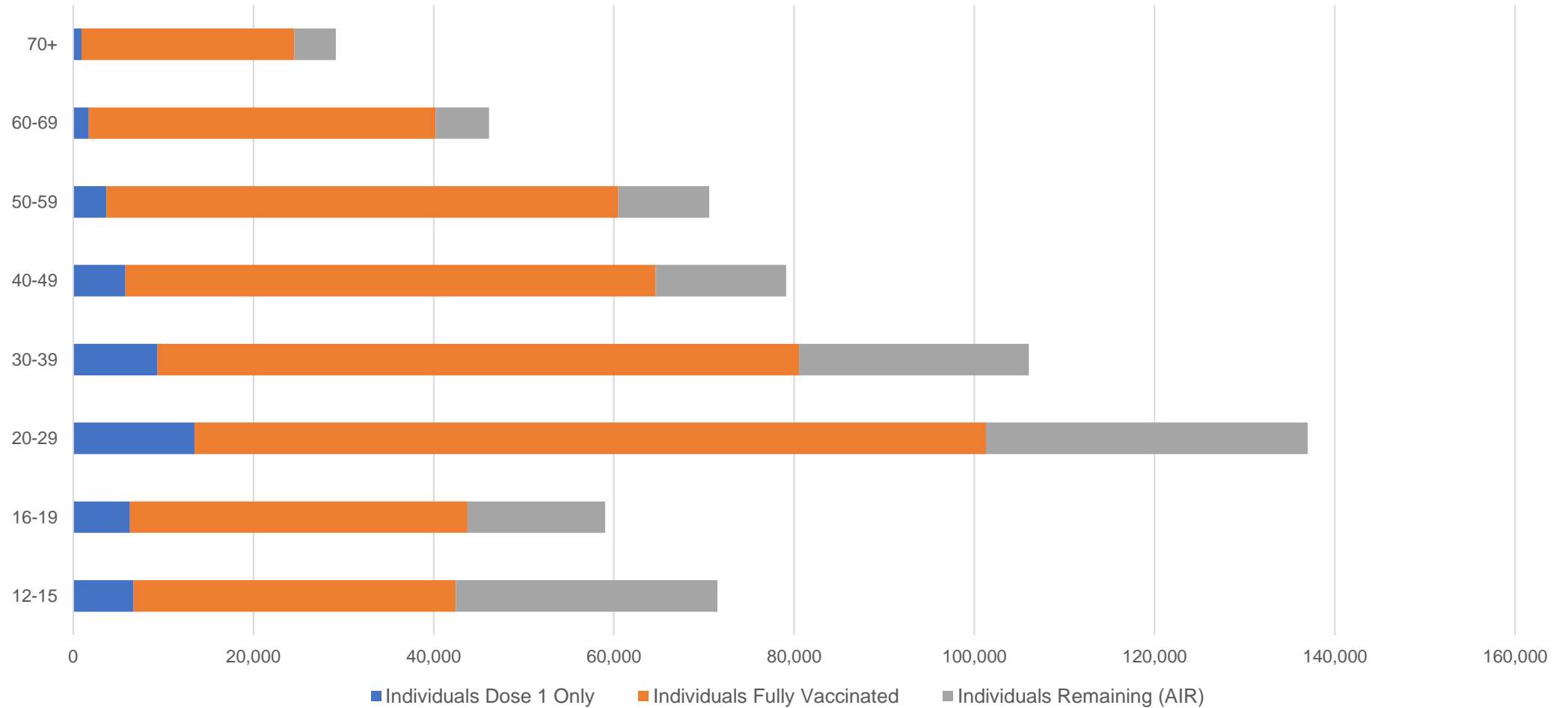
##The above table includes all identified Aboriginal and Torres Strait Islander people who are aged 16 and above by their state of residence.

Aboriginal and Torres Strait Islander peoples

Number of people vaccinated by age

Data as at:
28 Dec 2021
Updated weekly

Australia's COVID-19
Vaccine Roadmap



Source: Australian Immunisation Register

Data as at:
30 Dec 2021

Commonwealth primary care



Primary care vaccine administration sites

5,674	137	173	3,472
GPs	CVCs	ACCHS	Pharmacies



24,433,126 total vaccine doses administered
primary care settings as at 30 December
+ 121,010 recorded in the last 24 hours

Primary care vaccinations by provider type

	Doses administered	Daily increase	7 day increase
General Practice* includes other Commonwealth	21,251,250	61,976	189,171
Pharmacy	3,181,876	59,034	184,733



169,175 doses administered to persons residing in other territories or with missing residential information

*General practice includes Commonwealth Vaccination Clinics, Aboriginal Community Health Centres, Royal Flying Doctor Service and other Commonwealth vaccination facilities

Source: Australian Immunisation Register

Data as at:
30 Dec 2021

Commonwealth aged care and disability doses administered



1,173,201 (+ 138 last 24 hours)

Total vaccine doses administered in aged care and disability facilities as at 30 December

Number of doses administered as part of the Commonwealth aged and disability care rollout

NSW
537,675
(+19 daily increase)

VIC
218,266
(+82 daily increase)

QLD
183,266
(+73 daily increase)

WA
84,604
(+8 daily increase)

TAS
21,096
(+1 daily increase)

SA
78,145
(+3 daily increase)

ACT
15,350
(+5 daily increase)

NT
6,645
(-6# daily increase)

28,154 doses administered to persons residing in other territories or with missing residential information

Source: Australian Immunisation Register

*Sourced from the Australian Immunisation Register. Includes all persons vaccinated at participating residential aged care, disability and related industry settings.

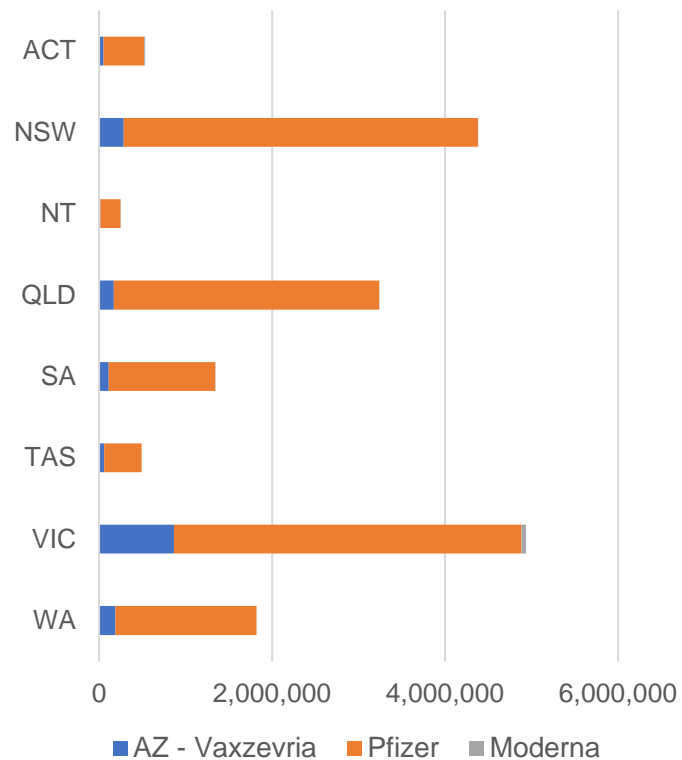
**State level breakdown indicates the residential location and may not align to the state in which the vaccination occurred.

Numbers are calculated as difference in daily cumulative reported numbers to allow for historical corrections in all data sources. This can occasionally result in negative numbers, such as for QLD, TAS and NT, where historical details about doses have been updated.

Data as at:
30 Dec 2021

Jurisdiction administered

Total vaccine doses administered in State and Territory clinics as at 30 December



16,992,379 total vaccine doses administered in State and Territory clinics as at 30 December
 + **39,131** recorded in the last 24 hours
 + **147,139** recorded in the last 7 days

NSW
4,386,217
 (+4,251 daily increase)

VIC
4,936,981
 (+3,808 daily increase)

QLD
3,238,908
 (+11,813 daily increase)

WA
1,818,182
 (+10,999 daily increase)

TAS
492,281
 (+641 daily increase)

SA
1,341,368
 (+6,044 daily increase)

ACT
532,425
 (+998 daily increase)

NT
246,017
 (+577 daily increase)

*Sourced from the Australian Immunisation Register and self-reported data. Numbers are calculated as difference in daily cumulative reported numbers to allow for historical corrections in all self-reported data sources.

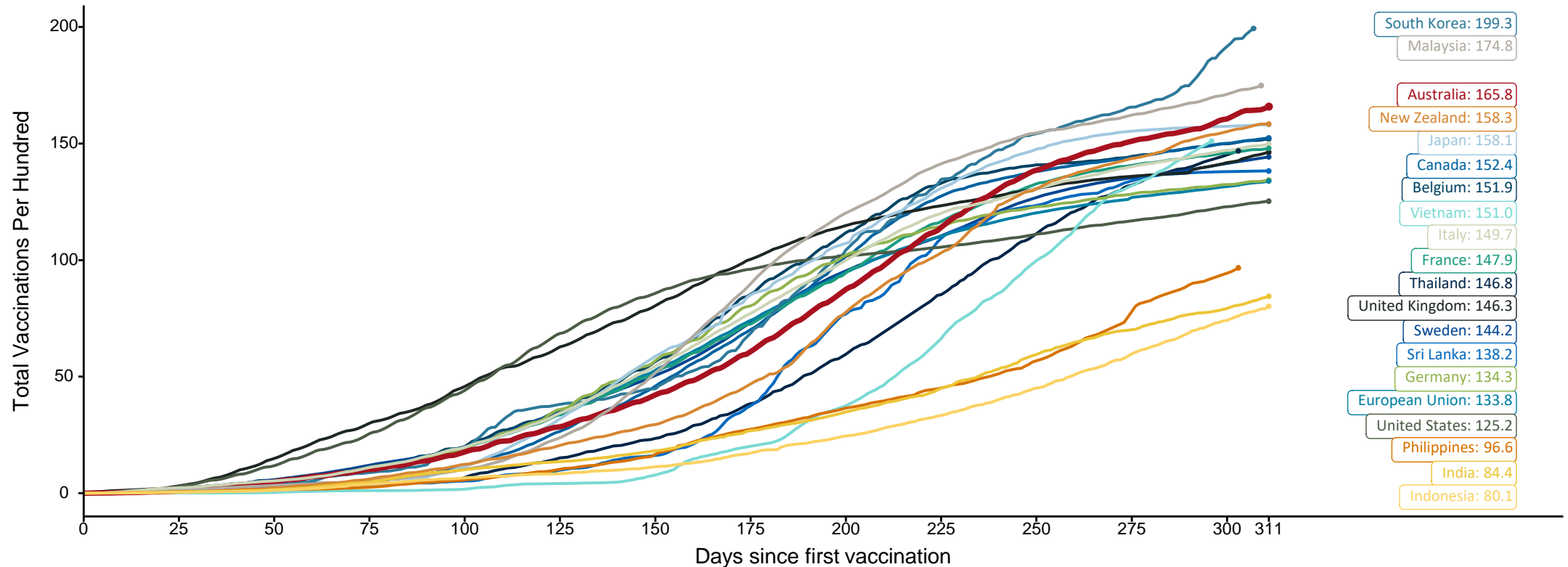
Source: Australian Immunisation Register

Doses at equivalent stages of rollout (Day 311)

Data as at:
30 Dec 2021

The x-axis is truncated at the length of Australia's vaccination program. Countries with intermittent reporting have had their doses per 100 imputed to Australia's current stage of rollout. Israel excluded as it is beyond scale of the graph

Cumulative doses administered (30 Dec): **42,598,706**

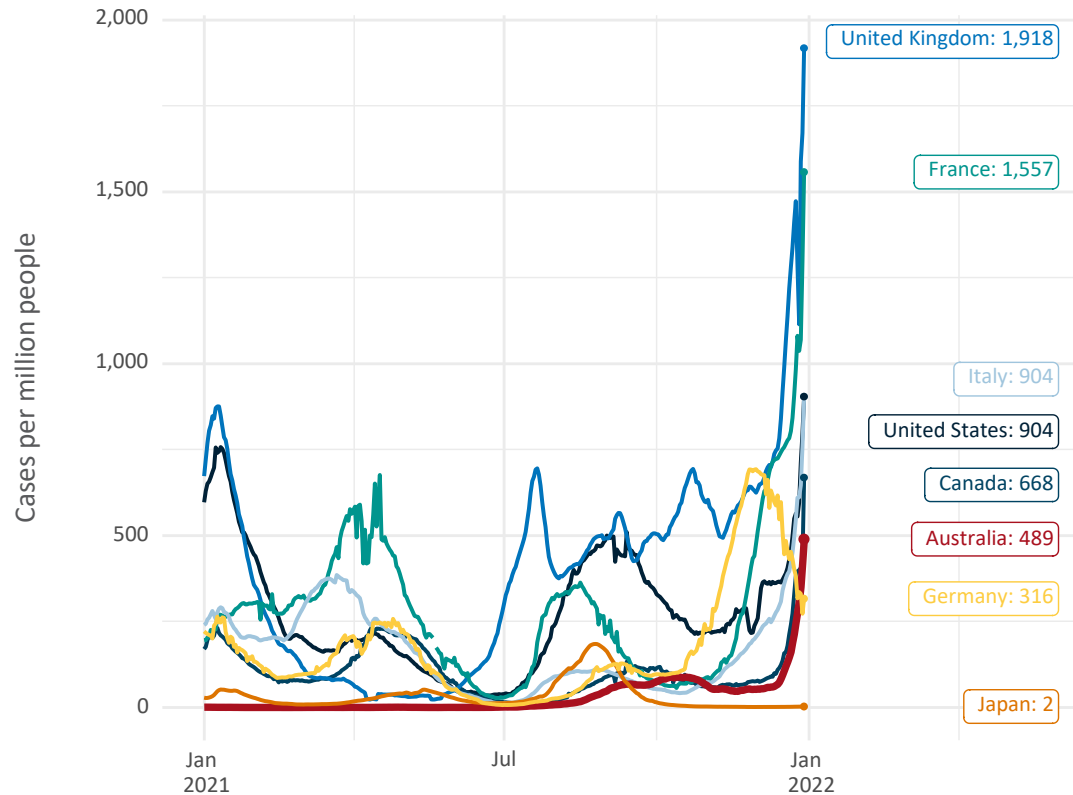


Note: From 15 September 2021, data for Australia includes all doses administered to people 12 and over. Prior to 15 September, data was for 16 and over
 Due to data revisions, Singapore has been removed from the chart
 Source: Department of Health (Australia), Our World in Data (international)
 Latest data: 30 December

Data as at:
30 Dec 2021

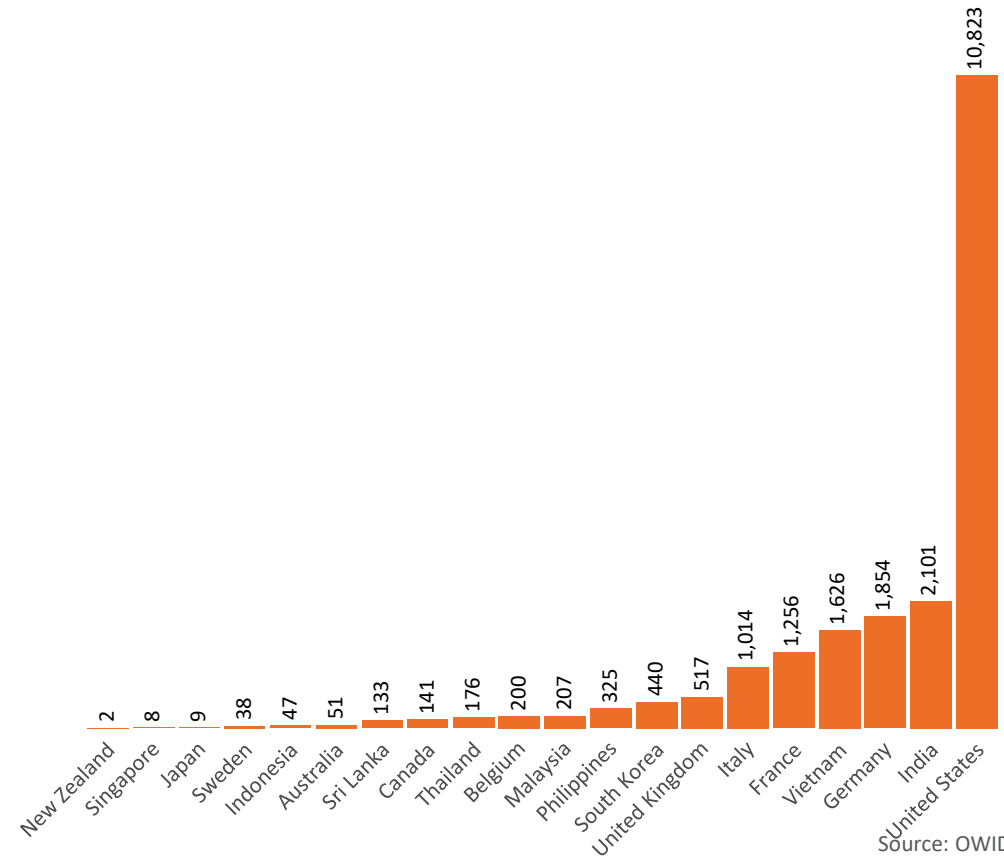
International data – COVID-19

New daily cases per million in 2021, Australia and G7 countries
Smoothed - 7 day average



Source: OWID
Data downloaded: 31 Dec 2021 08:12
Latest data: 29 Dec 2021

COVID-19 deaths in past 7 days - Australia and select countries



Source: OWID
Data downloaded: 31 Dec 2021 08:12
Latest data: 29 Dec 2021